



# Air Quality Monitoring in Albany

## Purpose

The purpose of this Fact Sheet is to provide information on air quality monitoring that is undertaken by the Department of Environment Regulation (DER) in Albany.

## Introduction

Air quality monitoring is undertaken by DER at a number of regional and metropolitan locations within Western Australia in accordance with the National Environment Protection (Ambient Air Quality) Measure (NEPM).

DER is responsible for the operation and maintenance of 13 air quality monitoring sites in Western Australia, including Albany.

Albany’s air quality monitoring site was founded in 2006 primarily to monitor smoke from bushfires, prescribed fire hazard reduction burns and wood-fired home heaters.

**Key Points - Air Quality in Albany**

- Air quality in Albany is considered good on most days, although some poor air quality events, such as bushfires, occur in any given year.
- Poor air quality events have been primarily attributed to fire hazard reduction burns or bushfires.
- Monitoring will continue in accordance with NEPM as the national standard.
- Monitoring is scheduled to be expanded in 2021–22 through an additional PM<sub>2.5</sub> monitor.

## Our Monitoring

One air quality pollutant, particle matter less than 10 microns in diameter (PM<sub>10</sub>), is monitored in Albany.

Particulate matter contains small particles that can be harmful to humans and can be attributed to industrial activities and natural sources such

as bushfires, prescribed fire hazard reduction burns, dust storms and pollen.

## Air Quality Particle Criteria

The NEPM provides a number of criteria for particle matter as shown through Table 1.

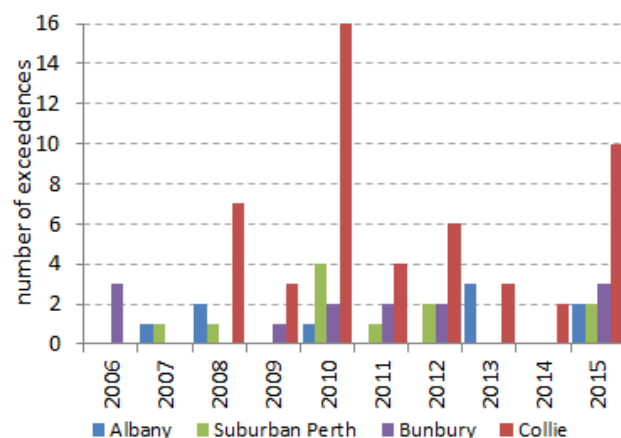
**Table 1. Air Quality Particle Criteria**

Pollutant	Averaging Period	Maximum concentration (micrograms per cubic metre)
Particulate Matter as PM <sub>10</sub>	1 day	50 µg/m <sup>3</sup>
	1 year	25 µg/m <sup>3</sup>
Particulate Matter as PM <sub>2.5</sub>	1 day	25 µg/m <sup>3</sup>
	1 year	8 µg/m <sup>3</sup>

All exceedences and events are reported and identified. If the exceedence is caused by a fire or dust event, and causes the one day average particle standards to exceed normal historical fluctuations and background levels, it is referred to as an exceptional event.

## Particle Levels in Albany

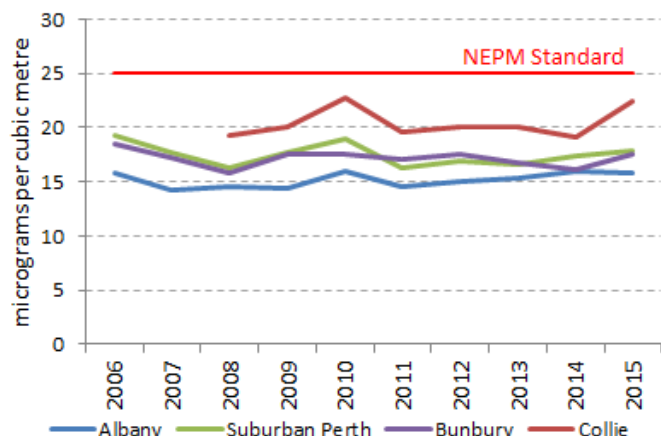
Albany has occasionally exceeded the daily (24 hour) standard of 50 µg/m<sup>3</sup> for PM<sub>10</sub> since 2006 as shown through Figure 1.



**Figure 1. Number of times the NEPM 24 hour PM<sub>10</sub> standard was exceeded at a range of sites**

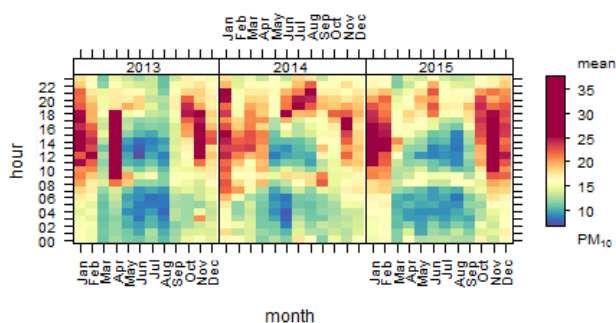
Albany experienced two exceedences of the daily NEPM PM<sub>10</sub> standard in 2015. These were caused by prescribed fire hazard reduction burns in spring.

Since commencement of particle monitoring in 2006, Albany has not exceeded the NEPM annual standard for PM<sub>10</sub> size particles of 25 µg/m<sup>3</sup> (Figure 2). In 2015, the annual average PM<sub>10</sub> concentration in Albany was 15.8 µg/m<sup>3</sup>.



**Figure 2. Annual average PM<sub>10</sub> concentrations at a range of sites**

As Figure 3 shows, over the past three years, elevated averaged particle levels at Albany have occurred predominantly in the afternoons and generally during the drier Summer months.



**Figure 3. Average PM<sub>10</sub> concentrations at Albany for each hour over the last three years**

## Future Monitoring in Albany

While DER has monitored PM<sub>10</sub> in Albany since 2006, a new PM<sub>2.5</sub> particle monitor is scheduled to be installed in the town in 2021–22.

### Particles Explained

Airborne particles are commonly classified by size in terms of their equivalent aerodynamic diameter (EAD). An EAD is the diameter of a spherical particle of density 1 gram per cubic centimeter (the same density as water) which exhibits the same aerodynamic behavior as the particle in question. Particles are sampled and described on the basis of their EAD but usually simply called the particle size.

PM<sub>10</sub> particles are any substances that have an EAD less than or equal to 10 micrometres in diameter. PM<sub>2.5</sub> are any substances that have an EAD less than or equal to 2.5 micrometres in diameter. Particles in this size range make up a large portion of dust that can be drawn into the lungs. Larger particles tend to be trapped in the nose, mouth or throat<sup>1</sup>.

The important thing to note is that PM<sub>10</sub> and PM<sub>2.5</sub> is not one particular substance, but simply a classification of particle or dust size.

<sup>1</sup> [National Pollutant Inventory, Particulate matter \(PM<sub>10</sub> and PM<sub>2.5</sub>\)](#)

## More Information

For advice on the Regulations, or related matters, please contact Licensing and Approvals on 6467 5000.

This document is available in alternative formats and other languages on request.

## Related Documents

Additional publications about Air Quality are available online from [www.der.wa.gov.au/airquality](http://www.der.wa.gov.au/airquality), or can be requested by phoning 6467 5000.

## Legislation

This document is provided for guidance only. It should not be relied upon to address every aspect of the relevant legislation. Please refer to the State Law Publisher (SLP) for copies of the relevant legislation, available electronically from the SLP website at [www.slp.wa.gov.au](http://www.slp.wa.gov.au).

## Document Versions

- July 2016

## Disclaimer

The information contained in this document is provided by DER in good faith as a public service. However, DER does not guarantee the accuracy of the information contained in this document and it is the responsibility of recipients to make their own enquiries as to its accuracy, currency and relevance.

The State of Western Australia, DER and their servants and agents expressly disclaim liability, in negligence or otherwise, for any act or omission occurring in reliance on the information contained in this document or for any consequence of such act or omission.

## Limitation

The Western Australian Government is committed to providing quality information to the community and makes every attempt to ensure accuracy, currency and reliability of the data contained in this document.

However, changes in circumstances after the time of publication may impact on the quality of information. Confirmation of the information may be sought from the relevant originating bodies or the department providing the information. The State of Western Australia and DER reserve the right to amend the content of this document at any time without notice.

## Legal Advice

The information provided to you by DER in relation to this matter does not constitute legal advice. Due to the range of legal issues potentially involved in this matter, DER recommends that you obtain independent legal advice.