



Works Approval

Works approval number	W3186/2026/1
Works approval holder	Commissioner of Main Roads
Registered business address	Don Aitken Centre Waterloo Crescent EAST PERTH WA 6004
DWER file number	APP-0031087
Internal number	INS-0003186
Duration	27/03/2026 to 27/03/2030
Date of issue	27/03/2026
Premises details	Material Borrow Pit Legal description - Part of Lot 33 on Deposited Plan 240249 Certificate of Title Volume LR3143 Folio 733 As defined by the coordinates in Schedule 2

Prescribed premises category description (Schedule 1, <i>Environmental Protection Regulations 1987</i>)	Assessed production / design capacity
Category 12: Screening etc. of material	270,000 tonnes per annual period
Category 13: Crushing of building material	270,000 tonnes per annual period
Category 61A: Solid waste facility	270,000 tonnes per annual period

This works approval is granted to the works approval holder, subject to the attached conditions, on 27 March 2026, by:

MANAGER, WASTE INDUSTRIES

an officer delegated under section 20 of the *Environmental Protection Act 1986* (WA)

Works approval history

Date	Reference number	Summary of changes
27/03/2026	W3186/2026/1	Works approval granted.

Interpretation

In this works approval:

- (a) the words 'including', 'includes' and 'include' in conditions mean "including but not limited to", and similar, as appropriate;
- (b) where any word or phrase is given a defined meaning, any other part of speech or other grammatical form of that word or phrase has a corresponding meaning;
- (c) where tables are used in a condition, each row in a table constitutes a separate condition;
- (d) any reference to an Australian or other standard, guideline, or code of practice in this works approval:
 - (i) if dated, refers to that particular version; and
 - (ii) if not dated, refers to the latest version and therefore may be subject to change over time;
- (e) unless specified otherwise, any reference to a section of an Act refers to that section of the EP Act; and
- (f) unless specified otherwise, all definitions are in accordance with the EP Act.

NOTE: This works approval requires specific conditions to be met but does not provide any implied authorisation for other emissions, discharges, or activities not specified in this works approval.

Works approval conditions

The works approval holder must ensure that the following conditions are complied with:

Construction phase

Infrastructure and equipment

1. The works approval holder must:
 - (a) construct and/or install the infrastructure and/or equipment;
 - (b) in accordance with the corresponding design and construction / installation requirements; and
 - (c) at the corresponding infrastructure location; as set out in Table 1.

Table 1: Design and construction / installation requirements.

	Infrastructure	Design and construction / installation requirements	Infrastructure location
1.	Mobile Crushing and Screen Plant comprising the following plant: <ol style="list-style-type: none"> (i) Two Cone Crushers (Lokotrack LT300HP), (ii) Mobile VSI Crusher (LT7150), (iii) Mobile Jaw Crusher (Lokotrack LT120), and (iv) Mobile Screen (Nordtrack S3.9). 	<ol style="list-style-type: none"> (a) Dust suppression sprays in place at hopper and jaw crusher screen, and associated conveyors, (b) Earthen bund constructed to retain fine suspended particles from the crushing and screening area, and (c) Stormwater diverted away from crushing and screen area bund. 	As depicted in Figure 2
2.	Re-cycled Rail Ballast Stockpile	<ol style="list-style-type: none"> (a) Stockpile hardstand constructed to achieve a maximum coefficient of permeability of 1×10^{-9} m/s, (b) Hardstand constructed to divert all leachate runoff from stockpiles to the Stormwater Retention Sump to collect, and (c) Earthen bund constructed to divert stormwater away from the stockpile hardstand area. 	As depicted in Figure 2

	Infrastructure	Design and construction / installation requirements	Infrastructure location
3.	Stormwater Retention Sump	<p>(a) Sump to be approximately sized to capture a 1 in 100 annual recurrence interval (ARI) rainfall event (1% AEP) from the premises,</p> <p>(b) Capture suspended particles from the Re-cycled Rail Ballast Stockpile and Mobile crushing and screen plant area, and</p> <p>(c) Uncontaminated stormwater to be diverted away from the sump.</p>	As depicted in Figure 2

Compliance reporting

2. The works approval holder must within 30 calendar days of an item of infrastructure or equipment required by condition 1 being constructed and/or installed:
 - (a) undertake an audit of their compliance with the requirements of condition 1; and
 - (b) prepare and submit to the CEO an Environmental Compliance Report on that compliance.
3. The Environmental Compliance Report required by condition 2, must include as a minimum the following:
 - (a) certification by a suitably qualified civil engineer that the items of infrastructure or component(s) thereof, as specified in condition 1, have been constructed in accordance with the relevant requirements specified in condition 1;
 - (b) as constructed plans and a detailed site plan for each item of infrastructure or component of infrastructure specified in condition 1; and
 - (c) be signed by a person authorised to represent the works approval holder and contains the printed name and position of that person.

Time limited operations phase

Commencement and duration

4. The works approval holder may only commence time limited operations for an item of infrastructure identified in condition 1 where the Environmental Compliance Report as required by condition 3 has been submitted by the works approval holder for that item of infrastructure.
5. The works approval holder may conduct time limited operations for an item of infrastructure specified in condition 1 (as applicable):
 - (a) for a period not exceeding 180 calendar days from the day the works approval holder meets the requirements of condition 4 for that item of infrastructure; or
 - (b) until such time as a licence for that item of infrastructure is granted in accordance with Part V of the *Environmental Protection Act 1986*, if one is granted before the end of the period specified in condition 5(a).

Time limited operations requirements and emission limits

6. During time limited operations, the works approval holder must ensure that the premises infrastructure and equipment listed in Table 2 and located at the corresponding infrastructure location is maintained and operated in accordance with the corresponding operational requirement set out in Table 2.

Table 2: Infrastructure and equipment requirements during time-limited operations.

Infrastructure	Operational requirements	Infrastructure location
Mobile Crusher and Screen Plant	a) No more than 5,400 tonnes per day is processed, b) Stockpiles must be wet prior to crushing and screening, c) Maintain and operate dust suppression spray systems, d) Water cart must be present when crushing and screening is occurring, and e) Spills are immediately cleaned up.	As depicted in Figure 2
Mobile Crushing and Screen Plant earthen bund	Bund must be maintained and repaired to: (a) retain fine suspended particles from the crushing and screening area and divert particles to the Stormwater Retention Sump, and (b) ensure uncontaminated stormwater is directed away from the crushing and screening hardstand area.	As depicted in Figure 2
Stormwater Retention Sump	(a) Sump maintained to capture a 1 in 100 annual recurrence interval (ARI) rainfall event (1% AEP) from the premises, (b) Maintained to retain captured suspended fine material, and (c) Accumulated sediment in the retention sump must be regularly removed and disposed of at a suitable licensed facility to maintain capacity.	As depicted in Figure 2

Waste acceptance

7. The works approval holder must only accept waste materials onto the premises for recycling, processing and storage that meet the specifications in Table 3.

Table 3: Material acceptance specifications.

Material type	Rate at which material is received	Acceptance specifications
Recovered railway ballast	270,000 tonnes per annual period	Limited to rail ballast from Rio Tinto's Pilbara Rail Network

8. Where presented waste does not meet the waste acceptance criteria set out in condition 7, the works approval holder must:
- (a) reject the waste; and
 - (b) record the details of the:
 - (i) waste (type and description);

- (ii) source of the waste load;
 - (iii) name of the waste carrier;
 - (iv) registration number of the delivery vehicle; and
 - (v) date that the waste load was rejected; and
- (c) maintain accurate and auditable records of all waste loads rejected from the premises.
9. The works approval holder must ensure that where unloaded waste does not meet the waste acceptance criteria set out in condition 7, it is removed from the premises by the delivery vehicle or, where that is not possible, collected and stored in a clearly signposted quarantined storage area or container and removed to an appropriately authorised facility within 72 hours of unloading.
10. Where the works approval holder identifies that a presented or unloaded waste load contains asbestos and/or ACM, the works approval holder must treat that entire load as though it did not meet the waste acceptance criteria set out in condition 7.

Waste processing

11. The works approval holder must ensure that waste is only subjected to the processes set out in Table 4 and in accordance with any process limits described in that table.

Table 4: Waste processing.

Waste type	Process(es)	Process limits and/or specifications ¹
Recovered railway ballast	Handling, crushing, screening and storage	(a) No more than 5,4000 tonnes per day shall be processed, (b) Stockpiles must be wet prior to crushing and screening, (c) Dust suppression systems must be in working order, and (d) Water cart must be present when crushing and screening is occurring.

12. The works approval holder must ensure that the asbestos content of any recycled output originating from recovered railway ballast does not exceed the contamination limit of 0.001% w/w for asbestos (in any form).

Waste monitoring

13. The works approval holder must undertake the monitoring in Table 5 according to the specifications in that Table 5 during the time limited operations stage.

Table 5: Monitoring of inputs and outputs from recovered railway ballast recycling operations.

Material type	Units	Averaging period	Frequency
Recovered railway ballast (accepted onto site for storage and/or processing)	Tonnes	N/A	Each load arriving at the premises
Recycled ballast outputs (deemed suitable for reuse)	Tonnes	N/A	Each load leaving or rejected from the premises
Ballast rejects (materials disposed offsite to a suitably licensed facility)	Tonnes	N/A	Each load leaving the premises
Waste fines (suspended particles within the Stormwater Retention Sump disposed offsite to a suitably licensed facility)	Tonnes	N/A	Each load leaving the premises

Compliance reporting

14. The works approval holder must submit to the CEO a report on the time limited operations within 30 calendar days of the completion date of time limited operations or 30 calendar days before the expiration date of the works approval, whichever is the sooner.
15. The works approval holder must ensure the report required by condition 14 includes the following:
- a summary of the time limited operations, including date(s) for commencement of time limited operations, timeframes and amount of waste processed;
 - a summary of the environmental performance of each item of infrastructure or equipment as installed, which at minimum includes an assessment of the Crushing and Screening performance against operational requirements in condition 6; and
 - material inputs and outputs in condition 13.
 - monitoring results from recycled ballast output sampling and testing in condition 12.

Records and reporting (general)

16. The works approval holder must record the following information in relation to complaints received by the works approval holder (whether received directly from a complainant or forwarded to them by the Department or another party) about any alleged emissions from the premises:
- the name and contact details of the complainant, (if provided);
 - the time and date of the complaint;

- (c) the complete details of the complaint and any other concerns or other issues raised; and
 - (d) the complete details and dates of any action taken by the works approval holder to investigate or respond to any complaint.
- 17.** The works approval holder must maintain accurate and auditable books including the following records, information, reports, and data required by this works approval:
- (a) the works conducted in accordance with condition 1;
 - (b) any maintenance of infrastructure that is performed in the course of complying with condition 1 and 6;
 - (c) monitoring data required in the course of complying with condition 13; and
 - (d) complaints received under condition 16.
- 18.** The books specified under condition 17 must:
- (a) be legible;
 - (b) if amended, be amended in such a way that the original version(s) and any subsequent amendments remain legible and are capable of retrieval;
 - (c) be retained by the works approval holder for the duration of the works approval; and
 - (d) be available to be produced to an inspector or the CEO as required.

Definitions

In this works approval, the terms in Table 6 have the meanings defined therein.

Table 6: Definitions.

Term	Definition
books	has the same meaning given to that term under the EP Act.
CEO	means Chief Executive Officer. CEO for the purposes of notification means: Director General Department administering the <i>Environmental Protection Act 1986</i> Locked Bag 10 Joondalup DC WA 6919 info@dwer.wa.gov.au
Department	means the department established under section 35 of the <i>Public Sector Management Act 1994</i> and designated as responsible for the administration of Part V Division 3 of the EP Act.
discharge	has the same meaning given to that term under the EP Act.
emission	has the same meaning given to that term under the EP Act.
environmental commissioning	means the sequence of activities to be undertaken to test equipment integrity and operation, or to determine the environmental performance, of equipment and infrastructure to establish or test a steady state operation and confirm design specifications.
Environmental Commissioning Report	means a report on any commissioning activities that have taken place and a demonstration that they have concluded, with focus on emissions and discharges, waste containment, and other environmental factors.
Environmental Compliance Report	means a report to satisfy the CEO that the conditioned infrastructure and/or equipment has been constructed and/or installed in accordance with the works approval.
EP Act	<i>Environmental Protection Act 1986 (WA)</i> .
EP Regulations	<i>Environmental Protection Regulations 1987 (WA)</i> .
premises	the premises to which this licence applies, as specified at the front of this licence and as shown on the premises map (Figure 1) in Schedule 1 to this works approval.
prescribed premises	has the same meaning given to that term under the EP Act.

Term	Definition
rail ballast	means crushed stone and gravel that forms the foundation of a railway track.
time limited operations	refers to the operation of the infrastructure and equipment identified under this works approval that is authorised for that purpose, subject to the relevant conditions.
waste	has the same meaning given to that term under the EP Act.
works approval	refers to this document, which evidences the grant of the works approval by the CEO under section 54 of the EP Act, subject to the conditions.
works approval holder	refers to the occupier of the premises being the person to whom this works approval has been granted, as specified at the front of this works approval.

END OF CONDITIONS

Schedule 1: Maps

Premises map

The boundary of the prescribed premises is depicted in the map below.

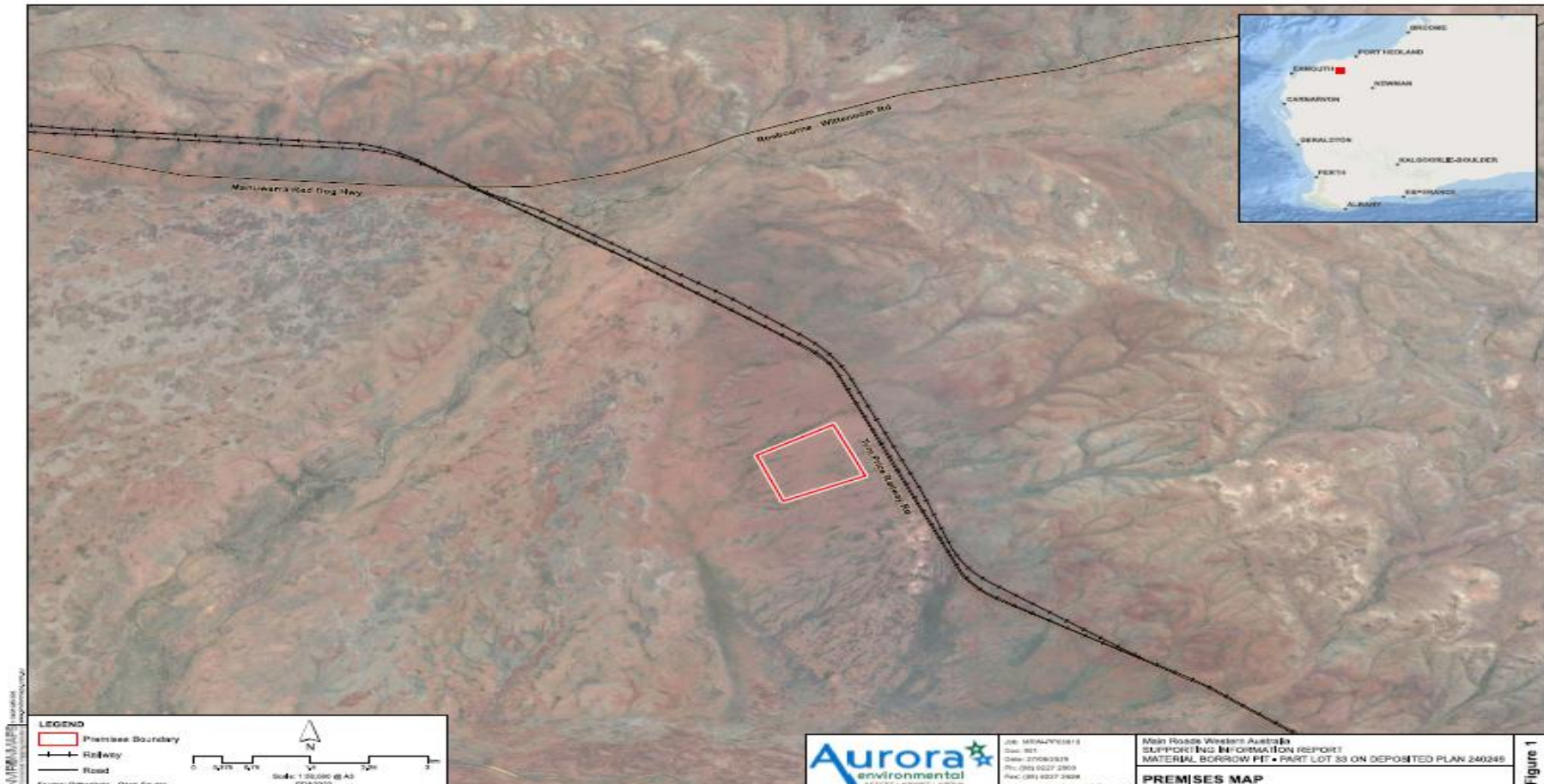


Figure 1: Map of the boundary of the prescribed premises.

Premises layout map



Figure 2: Premises layout.

Schedule 2: Premises boundary

The corners of the premises boundary are the coordinates listed in Table 5.

Table 5: Premises boundary coordinates (GDA2020)

	Latitude	Longitude
1.	-21.70491197000	117.47993236900
2.	-21.70214839730	117.48778578300
3.	-21.70446720950	117.49021660600
4.	-21.71078000000	117.49312200000
5.	-21.71504252530	117.48407719700
6.	-21.70491197000	117.47993236900