



<b>Licence number</b>	L5946/1988/13
<b>Licence holder</b>	Kalgoorlie Consolidated Gold Mines Pty Ltd
<b>ACN</b>	009 377 619
<b>Registered business address</b>	Level 1, 388 Hay Street SUBIACO WA 6008
<b>DWER file number</b>	INS-0001224
<b>Duration</b>	26/09/2014 to 25/09/2029
<b>Date of issue</b>	26/09/2014
<b>Date of amendment</b>	25/03/2026
<b>Premises details</b>	Gidji Processing Plant KALGOORLIE WA 6430  Legal description - General purpose leases G24/24, G24/25, G24/26, G24/27, G24/28, G24/29, G24/30, G24/31, G24/32, and G24/33  As defined by the Premises map in Schedule 1.

<b>Prescribed premises category description (Schedule 1, <i>Environmental Protection Regulations 1987</i>)</b>	<b>Assessed production / design capacity</b>
Category 5: Processing or beneficiation of metallic or non-metallic ore	438,000 tonnes per annual period

This amended licence is granted to the licence holder, subject to the attached conditions, on 25 March 2026, by:

MANAGER, RESOURCE INDUSTRIES  
STATEWIDE DELIVERY (ENVIRONMENTAL REGULATION)  
an officer delegated under section 20 of the *Environmental Protection Act 1986* (WA)

## Licence history

Date	Reference number	Summary of changes
01/10/2007	L5946/1988/10	Licence re-issue.
29/09/2009	L5946/1988/11	Licence re-issue.
04/04/2011	W4862/2011/1	Works approval for Gidji TSF extension.
01/12/2011	L5946/1988/12	Licence re-issue and amendment to some condition wording.
19/04/2012	L5946/1988/12	Licence amendment due to commissioning of TSF II East Cell.
12/06/2014	L5946/1988/12	Licence amendment due to commissioning of TSF II West Cell.
26/06/2014	W5659/2014/1	Works approval for Emissions Reduction Program (install Ultra Fine Grinding [UFG] mill).
26/09/2014	L5946/1988/13	Licence re-issue, conversion to REFIRE format and TSF seepage and groundwater monitoring amendments.
04/12/2014	L5946/1988/13	Licence amendment to increase plant throughput capacity from 225,000 tonnes to 351,000 tonnes per annum and to allow for the use of Gidji I TSF.
21/04/2016	L5946/1988/13	Licence amendment to remove metal smelting or refining and the Gidji I TSF for deposition of tailings. The vehicle washdown bay is also removed.  The licence has been amended to extend the duration of the licence in accordance with DER's <i>Guidance Statement on Licence Duration</i> .
05/10/2016	L5946/1988/13	Amendment Notice 1: Amended to increase the approved throughput capacity, and remove the requirements for vegetation monitoring and the improvement condition requiring the submission of a dust management plan.
05/08/2022	L5946/1988/13	Amendment to allow the construction and operation of an embankment lift to the Gidji II TSF cells (East and West) and the amalgamation of Amendment Notices into a single licence document.
25/03/2026	L5946/1988/13	Amendment to allow construction and operation of embankment raise to 368 mRL for Gidji II TSF (East and West Cell).

## Interpretation

In this licence:

- (a) the words 'including', 'includes' and 'include' in conditions mean "including but not limited to", and similar, as appropriate;
- (b) where any word or phrase is given a defined meaning, any other part of speech or other grammatical form of that word or phrase has a corresponding meaning;
- (c) where tables are used in a condition, each row in a table constitutes a separate condition;
- (d) any reference to an Australian or other standard, guideline, or code of practice in this licence:
  - (i) if dated, refers to that particular version; and
  - (ii) if not dated, refers to the latest version and therefore may be subject to change over time;
- (e) unless specified otherwise, any reference to a section of an Act refers to that section of the EP Act; and
- (f) unless specified otherwise, all definitions are in accordance with the EP Act.

**NOTE:** This licence requires specific conditions to be met but does not provide any implied authorisation for other emissions, discharges, or activities not specified in this licence.

## Licence conditions

The licence holder must ensure that the following conditions are complied with:

### Infrastructure and equipment

- The licence holder must ensure that the site infrastructure and equipment listed in Table 1 and located at the corresponding infrastructure location is maintained and operated in accordance with the corresponding operational requirement set out in Table 1

**Table 1: Infrastructure and equipment requirements**

Site infrastructure and equipment	Operational requirement	Infrastructure location
Gidji II TSF (East and West Cell)	<ul style="list-style-type: none"> <li>Embankment crest elevation must not exceed 368 mRL.</li> <li>Tailings deposition to elevations above 364 mRL is only permitted where the Environmental Compliance Report has been submitted for the relevant item of infrastructure in accordance with condition 22.</li> <li>Minimum operational freeboard of 300 mm must be maintained.</li> <li>Underdrainage system must be maintained and operational during tailings deposition and pumped to the return water dam.</li> <li>HDPE liner and bird netting must be maintained.</li> <li>Decant water pump must be continuously operated to minimise decant pond size as much as practicable.</li> <li>Decant pond area must be maintained such that it is no greater than 20% of the tailings beach area.</li> <li>Decant pond boundary must be maintained at least 75 m away from the perimeter embankments.</li> <li>Downstream toe drain must be maintained.</li> </ul>	Labelled as 'Gidji II West Cell' and 'Gidji II East Cell', as shown in Schedule 1, Figure 2.
Return water dam	<ul style="list-style-type: none"> <li>Minimum total freeboard of 300 mm must be maintained.</li> <li>HDPE liner and bird netting must be maintained while operational.</li> </ul>	Labelled as 'Gidji TSF Return Water Dam', as shown in Schedule 1, Figure 2.
Production water dam		Labelled as 'Production Water Dam', as shown in Schedule 1, Figure 2.
Groundwater recovery bores	<ul style="list-style-type: none"> <li>Groundwater recovery bores must be operated for groundwater recovery to manage standing water level and cyanide concentrations in groundwater in the event a limit and/or target</li> </ul>	As shown in Schedule 1, Figure 5.

Site infrastructure and equipment	Operational requirement	Infrastructure location
	specified in condition 13 is exceeded, except during repair and maintenance or where the bore is dry.	

2. The licence holder must ensure that all pipelines containing environmentally hazardous materials, including tailings slurry, process water, decant water, and saline water, as shown in Figure 3 of Schedule 1, are either:
  - (a) equipped with telemetry systems and pressure sensors along pipelines to allow the detection of leaks and failures; or
  - (b) equipped with automatic cut-outs in the event of a pipeline failure; or
  - (c) provided with secondary containment sufficient to contain any spill for a period equal to or greater than the time between routine inspections, as specified in condition 3.
  
3. The licence holder must:
  - (a) undertake inspections as detailed in Table 2;
  - (b) where any inspection identifies that an appropriate level of environmental protection is not being maintained, take corrective action to mitigate adverse environmental consequences as soon as practicable; and
  - (c) maintain a record of all inspections undertaken.

**Table 2: Inspection of infrastructure requirements**

Scope of inspection	Infrastructure location	Type of inspection	Frequency of inspection <sup>1</sup>
Tailings pipelines	Labelled as 'Tailings Line', as shown in Schedule 1, Figure 3.	Visual integrity	Every six hours during operations.
Return water lines	Labelled as 'TSF Return Water', as shown in Schedule 1, Figure 3.		
Gidji II TSF (East and West Cell)	Labelled as 'Gidji II West Cell' and 'Gidji II East Cell', as shown in Schedule 1, Figure 2.	Visual to confirm tailings deposition and HDPE liner integrity.	
		Visual to confirm location and size of the pond, in accordance with condition 1.	
		Visual to confirm required freeboard capacity is available, in accordance with condition 1.	
		Visual to identify any signs of seepage, cracking, or erosion.	
Return water dam	Labelled as 'Gidji TSF Return Water Dam', as shown in Schedule 1, Figure 2.	Visual to confirm required freeboard capacity is available, in accordance with condition 1.	Every 24 hours during operations.
Production water dam	Labelled as 'Production Water Dam', as shown		

Scope of inspection	Infrastructure location	Type of inspection	Frequency of inspection <sup>1</sup>
	in Schedule 1, Figure 2.		

Note 1: If circumstances at the scheduled time of inspection are identified as immediately hazardous to personnel, the inspection should be undertaken as soon as practicable and the reason(s) recorded.

4. The licence holder must install and maintain groundwater recovery bores to control the impact of seepage on groundwater levels, such that the ambient groundwater level limit measured in compliance monitoring bores are met.

### Emissions and discharges

5. The licence holder must ensure that the emissions specified in Table 3 are discharged only from the corresponding discharge point and only at the corresponding discharge point location.

**Table 3: Authorised discharge points**

Emission	Emission description	Discharge point	Discharge point location
Tailings slurry	Tailings produced from processing of ultrafine grinding concentrate at the premises.	Gidji II TSF (East and West Cell)	Labelled as 'Gidji II West Cell' and 'Gidji II East Cell', as shown in Schedule 1, Figure 2.

### Monitoring

6. The licence holder must ensure that:
  - (a) all water samples are collected and preserved in accordance with AS/NZS 5667.1;
  - (b) all groundwater monitoring is conducted in accordance with AS/NZS 5667.11; and
  - (c) all sample analysis is undertaken by laboratories with current NATA accreditation for the relevant parameters, unless otherwise specified in condition 12 and 13.
7. The licence holder must ensure that:
  - (a) monitoring is undertaken in each quarterly period such that there are at least 45 days in between the days on which samples are taken in successive quarters;
  - (b) monitoring is undertaken in each six monthly period such that there are at least five months in between the days on which samples are taken in successive quarters; and
  - (c) monitoring is undertaken in each annual period such that there are at least nine months in between the days on which samples are taken in successive quarters.
8. The licence holder must ensure that all monitoring equipment, used on the premises to comply with the conditions of this licence, is calibrated in accordance with the manufacturer's specifications and maintain a record of the calibrations.
9. The licence holder must, where the requirements for calibration cannot be practicable

met, or a discrepancy exists in the interpretation of the requirements, bring these issues to the attention of the CEO, accompanied with a report comprising details of any modifications to the methods.

10. The licence holder must monitor parameters specified in Table 4 in accordance with the requirements specified in Table 4 and record the results of all such monitoring.

**Table 4: Process monitoring**

Parameter	Unit	Frequency
Amount of ore concentrate processed	tonnes	Monthly total
Amount of tailings deposited to each TSF cell	tonnes	
Volume of water recovered from each TSF cell	m <sup>3</sup>	
Volume of water recovered from underdrainage system of each TSF cell	m <sup>3</sup>	
Volume of groundwater recovered via groundwater recovery bores (cumulative)	m <sup>3</sup>	

11. The licence holder must undertake monitoring of the water balance at Gidji II TSF (East and West Cell) for each monthly period, and record, as a minimum, the following information:
- (a) volume of tailings slurry deposited;
  - (b) estimated volume of water deposited (as part of tailings slurry);
  - (c) site rainfall;
  - (d) volume of decant water recovered;
  - (e) volume of seepage recovered from underdrainage system; and
  - (f) evaporation rate,
- to calculate the estimated volume of seepage losses into the environment.

12. The licence holder must monitor emissions in accordance with the requirements specified in Table 5 and record the results of all such monitoring.

**Table 5: Emissions and discharge monitoring**

Monitoring point	Monitoring location	Parameter	Unit	Frequency
1. Gidji I TSF trench 2. Return water dam	Labelled as 'Gidji Trench', 'Gidji TSF Return Water Dam', as shown in Schedule 1, Figure 2.	pH <sup>1</sup>	pH unit	Annually
		Electrical conductivity <sup>1</sup>	µS/cm	
		Total dissolved solids	mg/L	
		Total cyanide		
		Free cyanide		
Weak acid dissociable cyanide				

13. The licence holder must monitor ambient groundwater in accordance with the requirements specified in Table 6 and record the results of all such monitoring.

**Table 6: Monitoring of ambient groundwater concentrations**

Monitoring point	Monitoring location	Parameter	Unit	Frequency	Limit	Target			
Compliance monitoring bores: 1. MB R07 2. MB R08 3. MB R13 4. MB R14 5. MB R15 6. MB R19 7. MB R20 8. MB R21 9. MB R22 10. MB R23 11. MB R24 12. MB R25 13. MB R26 14. MB R27 15. MB R28 16. MB R34	As shown in Schedule 1, Figure 4.	Standing water level <sup>1</sup>	mbgl	Quarterly	4.0	None specified.			
		pH <sup>1</sup>	pH unit	Six monthly	None specified.				
		Electrical conductivity <sup>1</sup>	µS/cm						
		Total dissolved solids	mg/L	Annually					
		Total cyanide							
		Free cyanide							
		Weak acid dissociable cyanide			0.5				
		Operational area monitoring bores: 17. MB R01 18. MB R02 19. MB R03 20. MB R06d 21. MB R06s 22. MB R09 23. MB R10 24. MB R12 25. MB R16 26. MB R29 27. MB R30 28. MB R32 29. MB R33	As shown in Schedule 1, Figure 4.	Standing water level <sup>1</sup>	mbgl		Quarterly	None specified.	None specified.
				pH <sup>1</sup>	pH unit		Six monthly		
				Electrical conductivity <sup>1</sup>	µS/cm				
				Total dissolved solids	mg/L		Annually		
				Total cyanide					
				Free cyanide					
				Weak acid dissociable cyanide					

Note 1: In-field non-NATA accredited sampling permitted.

## Records and reporting

**14.** The licence holder must record the following information in relation to complaints received by the licence holder (whether received directly from a complainant or forwarded to them by the Department or another party) about any alleged emissions from the premises:

- (a) the name and contact details of the complainant, (if provided);

## Department of Water and Environmental Regulation

- (b) the time and date of the complaint;
  - (c) the complete details of the complaint and any other concerns or other issues raised, and
  - (d) the complete details and dates of any action taken by the licence holder to investigate or respond to any complaint.
- 15.** The licence holder must maintain accurate and auditable books including the following records, information, reports, and data required by the licence:
- (a) the calculation of fees payable in respect of this licence;
  - (b) the works calculated in accordance with condition 4 and 21 of this licence;
  - (c) any maintenance of infrastructure that is performed in the course of complying with condition 1, 2, 3, 4, and 6 of this licence;
  - (d) monitoring programmes undertaken in accordance with condition 10, 11, 12, and 13 of this licence; and
  - (e) complaints received under condition 14 of this licence.
- 16.** The books specified under condition 6 must:
- (a) be legible;
  - (b) if amended, be amended in such a way that the original version(s) and any subsequent amendments remain legible and are capable of retrieval;
  - (c) be retained by the licence holder for the duration of the licence; and
  - (d) be available to be produced to an inspector or the CEO, as requested.
- 17.** The licence holder must:
- (a) undertake an audit of their compliance with the conditions of this licence during the preceding annual period; and
  - (b) prepare and submit to the CEO an Annual Audit Compliance Report in the approved form by 31 March each year.
- 18.** The licence holder must:
- (a) prepare an Environmental Report that provides information in accordance with Table 7 for the preceding two annual periods; and
  - (b) submit that Environmental Report to the CEO by 31 March each year.

**Table 7: Environmental reporting requirements**

Condition	Requirement	Format or form
----	Summary of any failure or malfunction of any pollution control equipment that has resulted in any reportable environmental incidents that have occurred during the annual period and any action taken.	None specified.
Condition 17	Compliance	Annual Audit Compliant Report (AACR)
Condition 14	Complaints summary	None specified.
Condition 10	Process monitoring	None specified.

Condition	Requirement	Format or form
Condition 11	Water balance monitoring	Assessment of monitoring results, including trend analysis and exceedance of any limits specified.  Tabulated summary of the monitoring results, including a Microsoft Excel spreadsheet digital document/file.
Condition 12	Emission monitoring	
Condition 13	Ambient groundwater monitoring	

19. The licence holder must submit the information in Table 8 to the CEO according to the specifications in that table.

**Table 8: Non-annual reporting requirements**

Condition	Requirement	Reporting period	Reporting date (after end of the reporting period)	Format
Condition 8	Calibration	Not applicable.	Within 14 days of the CEO's request.	None specified.
Condition 10 to 13	Copies of original monitoring reports submitted by the licence holder by third parties.			As received by the licence holder from third parties.

20. The licence must ensure that the parameters listed in Table 9 are notified to the CEO in accordance with the notification requirements of the table.

**Table 9: Notification requirements**

Condition	Parameter	Notification requirement <sup>1</sup>	Format or form <sup>2</sup>
----	Any spills of environmentally hazardous materials greater than 250 L occurring in locations that may adversely impact on the environment.	As soon as practicable but no later than 5pm of the next usual working day.	None specified.
----	Any liquid spills greater than 5,000 L containing saline, alkaline or cyanide constituents that escape from overland pipeline bunding		
Condition 13	Breach of any limit specified in the licence	Part A: As soon as practicable but no later than 5pm of the next usual working day. Part B: As soon as practicable.	N1
Condition 8	Calibration report	As soon as practicable.	None specified.

## Construction phase

21. The licence holder must:
- construct the infrastructure and/or equipment;
  - in accordance with the corresponding design and construction requirements; and
  - at the corresponding infrastructure location, as set out in Table 10.

**Table 10: Design and construction requirements**

Item	Infrastructure	Design and construction requirements	Infrastructure location
1	Gidji II TSF East Cell embankment raise to 366 mRL	<ul style="list-style-type: none"> <li>Crest height of embankment raise must not exceed 366 mRL.</li> <li>Embankment raises must be constructed in accordance with design specifications (i.e., construction material, geometry, bunding, crossfall) specified in Schedule 2, Figure 6 and Figure 7.</li> <li>Embankment raise must be constructed using non-acid forming material.</li> </ul>	Labelled as 'Gidji II East Cell', as shown in Schedule 1, Figure 2.
2	Gidji II TSF West Cell embankment raise to 366 mRL	<ul style="list-style-type: none"> <li>HDPE liner on the upstream embankment must be extended to 366 mRL, in accordance with the layout detailed in Schedule 2, Figure 7 and Figure 8.</li> <li>HDPE liner installed must have a minimum thickness of 1.5 mm.</li> <li>Downstream embankment raise must be constructed with a slope no steeper than 1V:3H.</li> <li>Decant pond area must be fully netted to prevent fauna access.</li> <li>Tailings delivery and return water pipelines and decant pump must be reinstated following embankment raise.</li> <li>Water cart must be used for dust suppression during construction activities, where required to manage fugitive dust.</li> </ul>	Labelled as 'Gidji II West Cell', as shown in Schedule 1, Figure 2.
3	Gidji II TSF East Cell embankment raise to 368 mRL	<ul style="list-style-type: none"> <li>Crest height of embankment raise must not exceed 368 mRL.</li> <li>Embankment raises must be constructed in accordance with design specifications (i.e., construction material, geometry, bunding, crossfall) specified in Schedule 2, Figure 6 and Figure 7.</li> <li>Embankment raise must be constructed using non-acid forming material.</li> <li>HDPE liner on the upstream embankment must be extended to 368 mRL, in accordance with the layout detailed in Schedule 2, Figure 7 and Figure 8.</li> </ul>	Labelled as 'Gidji II East Cell', as shown in Schedule 1, Figure 2.
4	Gidji II TSF West Cell embankment		Labelled as 'Gidji II West

Item	Infrastructure	Design and construction requirements	Infrastructure location
	raise to 368 mRL	<ul style="list-style-type: none"> <li>• HDPE liner installed must have a minimum thickness of 1.5 mm.</li> <li>• Downstream embankment raise must be constructed with a slope no steeper than 1V:3H.</li> <li>• Decant pond area must be fully netted to prevent fauna access.</li> <li>• Tailings delivery and return water pipelines and decant pump must be reinstated following embankment raise.</li> <li>• Water cart must be used for dust suppression during construction activities, where required to manage fugitive dust.</li> </ul>	Cell', as shown in Schedule 1, Figure 2.

- 22.** The licence holder must within 90 calendar days of an item of infrastructure or equipment required by condition 21 being constructed:
- (a) undertake an audit of their compliance with the requirements of condition 21; and
  - (b) prepare and submit to the CEO an Environmental Compliance Report on that compliance.
- 23.** The Environmental Compliance Report required by condition 22 must include, as a minimum, the following:
- (a) certification by a suitably qualified engineer that the item of infrastructure or components thereof, as specified in condition 21, have been constructed in accordance with the relevant requirements specified in condition 21;
  - (b) as-constructed plans and a detailed site plan for each item of infrastructure or components thereof specified in condition 21; and
  - (c) be signed by a person authorised to represent the licence holder and contains the printed name and position of that person.

## Definitions

In this licence, the terms in Table 11 have the meanings defined.

**Table 11: Definitions**

Term	Definition
ACN	Australian Company Number
Annual Audit Compliance Report (AACR)	means a report submitted in a format approved by the CEO (relevant guidelines and templates are available on the Department's website).
annual period	a 12-month period commencing from 1 January until 31 December of the same year.
AS/NZS 5667.1	means the Australian Standard AS/NZS 5667.1 <i>Water Quality – Sampling – Guidance on the Design of sampling programs, sampling techniques and preservation and handling of samples.</i>
AS/NZS 5667.11	means the Australian Standard AS/NZS 5667.11 <i>Water Quality – Sampling – Guidance on sampling of groundwaters.</i>
books	has the same meaning given to that term under the EP Act.
CEO	means Chief Executive Officer of the department. “submit to / notify the CEO” (or similar), means either: Director General Department administering the <i>Environmental Protection Act 1986</i> Locked Bag 10 Joondalup DC WA 6919 or: <a href="mailto:info@dwer.wa.gov.au">info@dwer.wa.gov.au</a>
department; DWER	means the department established under section 35 of the <i>Public Sector Management Act 1994</i> (WA) and designated as responsible for the administration of the EP Act, which includes Part V Division 3.
discharge	has the same meaning given to that term under the EP Act.
emission	has the same meaning given to that term under the EP Act.
environmentally hazardous material	means material (either solid or liquid raw materials, materials in the process of manufacture, manufactured products, products used in the manufacturing process, by-products and waste) which, if discharged into the environment from or within the premises, may cause pollution or environmental harm.  These include dangerous goods, where they are stored in quantities below placard quantities. Storage of dangerous goods above placard quantities is regulated by the Department of Local Government, Industry Regulation and Safety.

<b>Term</b>	<b>Definition</b>
EP Act	<i>Environmental Protection Act 1986 (WA)</i>
EP Regulations	<i>Environmental Protection Regulations 1987 (WA)</i>
HDPE	means high-density polyethylene.
licence	refers to this document, which evidences the grant of a licence by the CEO under section 57 of the EP Act, subject to the specified conditions contained within.
licence holder	refers to the occupier of the premises, being the person specified on the front of the licence as the person to whom this licence has been granted.
mbgl	means metres below ground level.
NATA	refers to the National Association of Testing Authorities, Australia.
NATA-accredited	means in relation to the analysis of a sample that the laboratory is NATA-accredited for the specified analysis at the time of the analysis.
operational freeboard	means the distance between the maximum tailings elevations and the top of retaining banks or structures at their lowest point.
premises	refers to the premises to which this licence applies, as specified at the front of this licence and as shown on the premises map (Figure 1) in Schedule 1 to this licence.
prescribed premises	has the same meaning given to that term under the EP Act.
suitably qualified engineer	means a person who: <ol style="list-style-type: none"> <li>1. holds a Bachelor of Engineering recognised by the Australian Institute of Engineers; and</li> <li>2. has a minimum of five years of experience working in the design and/or implementation of the relevant infrastructure; or</li> <li>3. who is otherwise approved by the CEO to act in this capacity.</li> </ol>
TSF	means tailings storage facility.
usual working day	means 0800 – 1700 hours, Monday to Friday, excluding public holidays in Western Australia.
waste	has the same meaning given to that term under the EP Act.

---

**END OF CONDITIONS**

## Schedule 1: Maps

### Premises map

The boundary of the prescribed premises is shown in the map below (Figure 1).



Figure 1: Map of the boundary of the prescribed premises

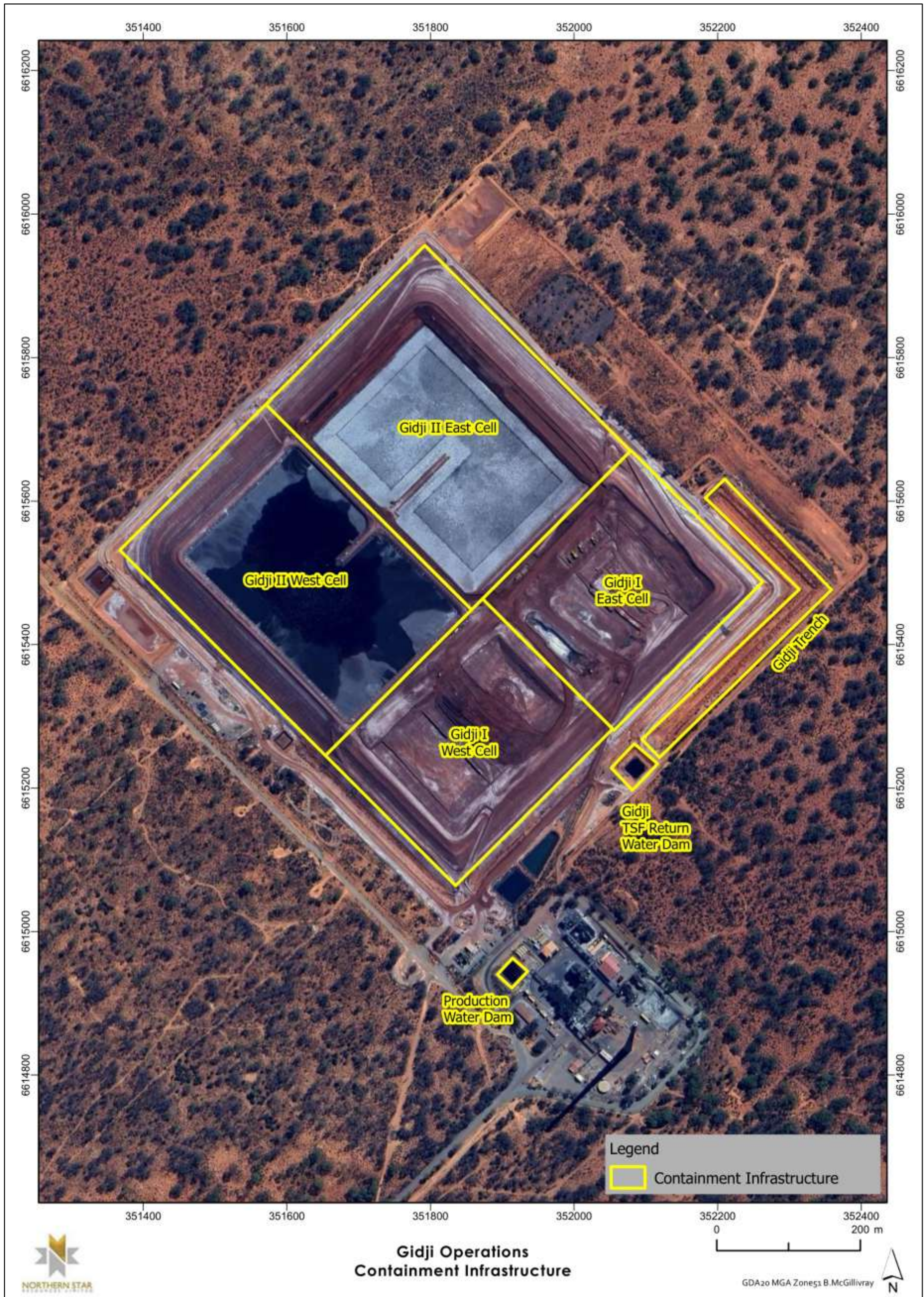


Figure 2: Site layout including containment infrastructure



Figure 3: Tailings delivery and return water pipelines

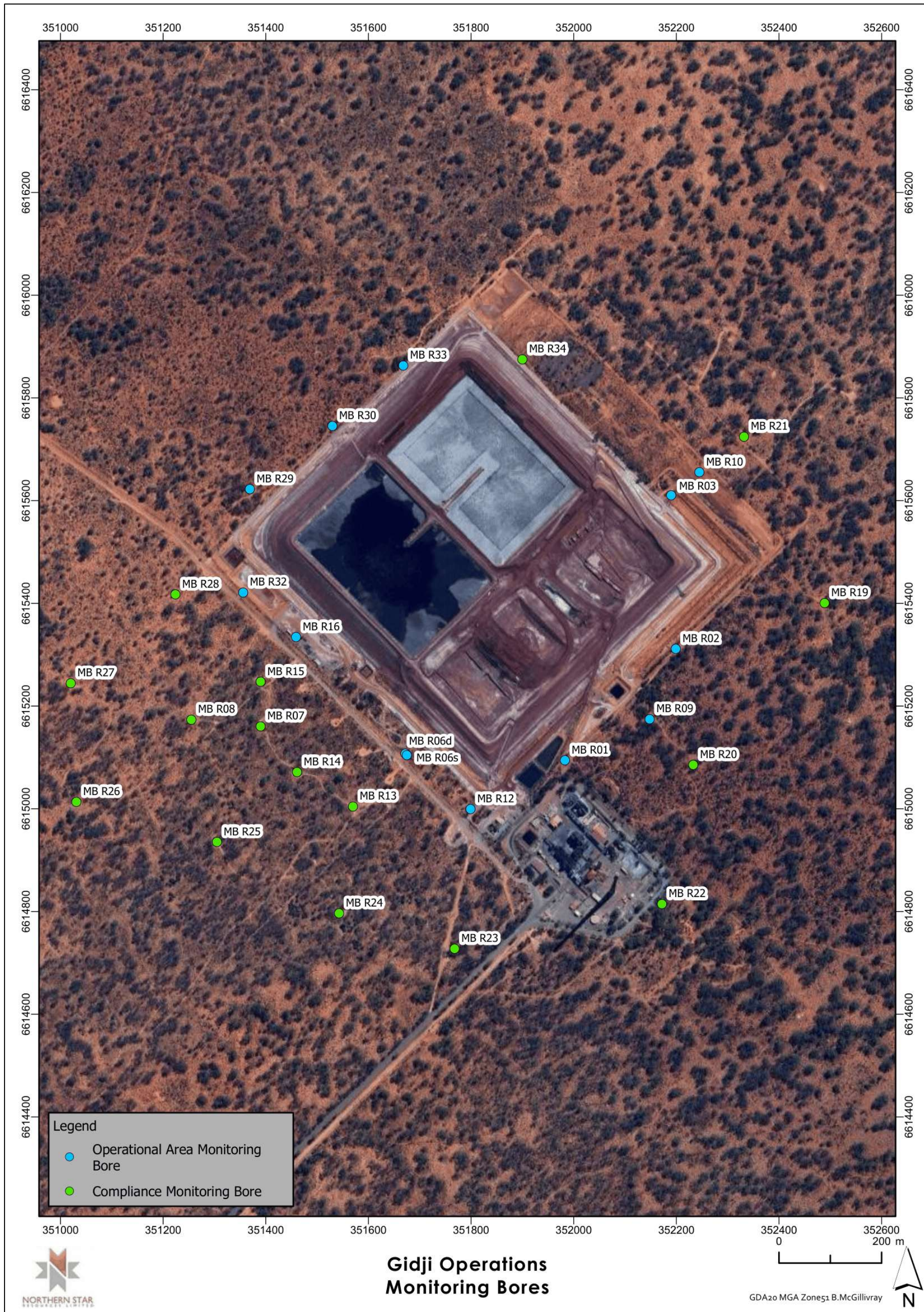


Figure 4: Ambient groundwater monitoring bore locations

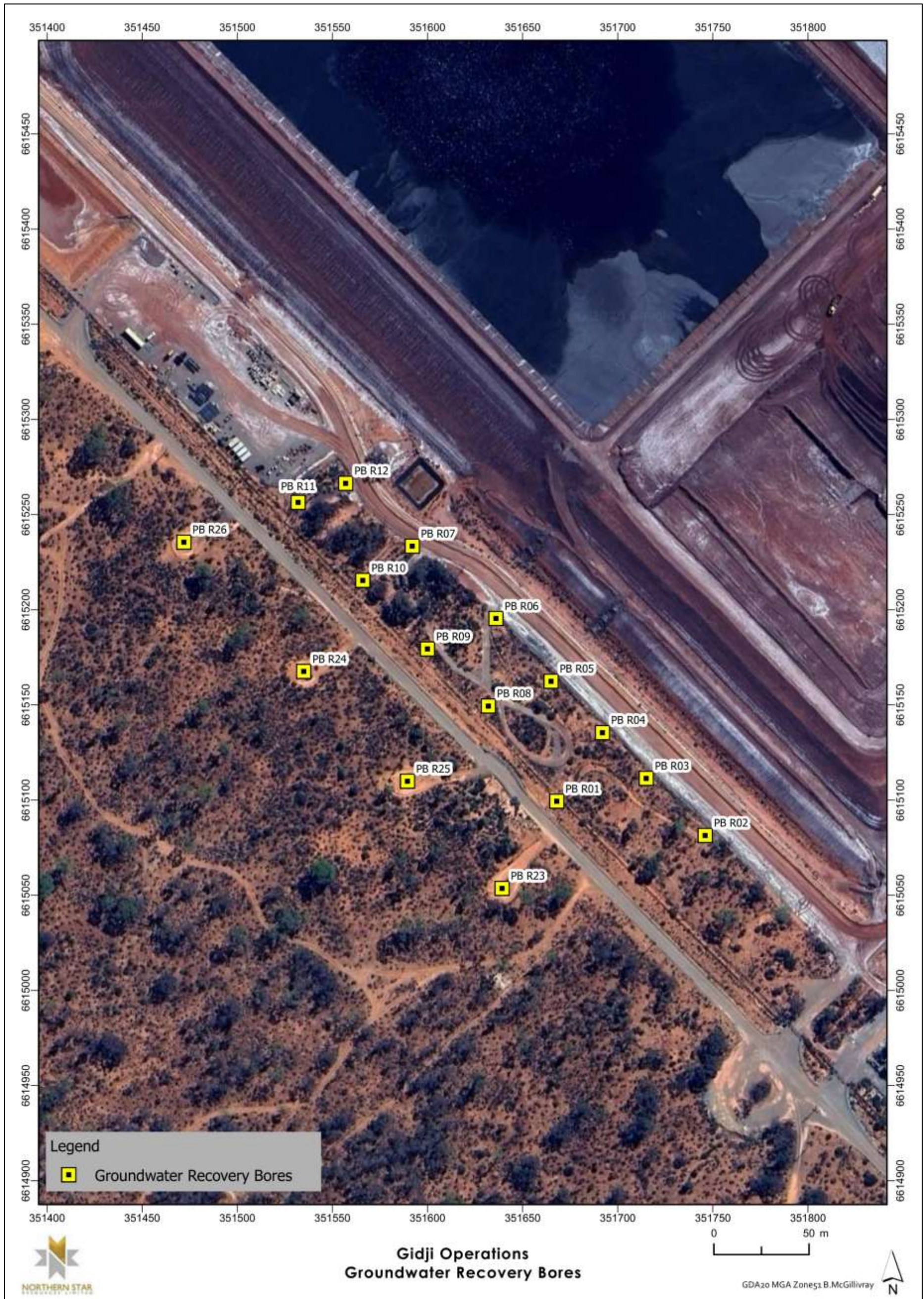


Figure 5: Groundwater recovery bore locations

## Schedule 2: Design drawings

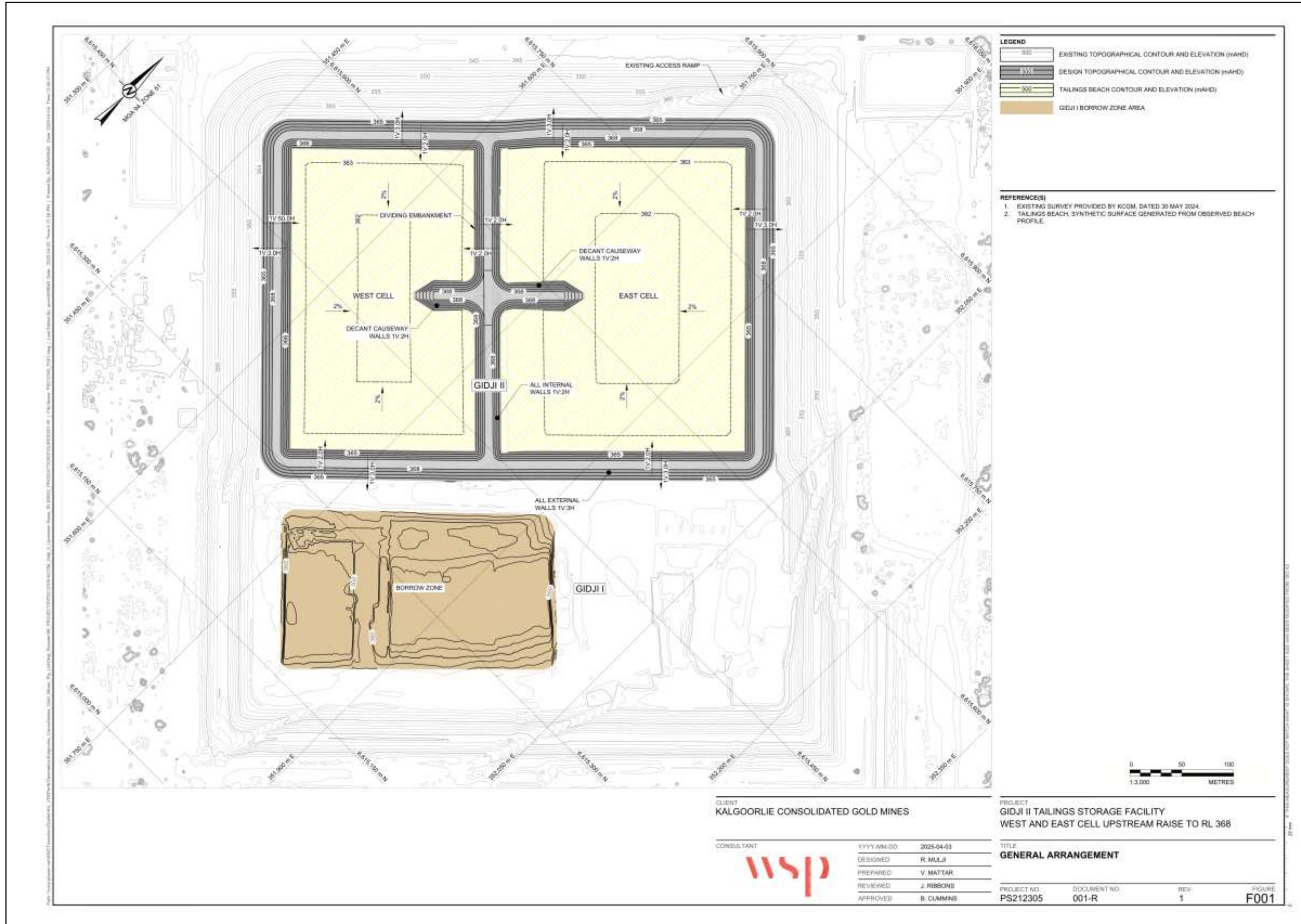


Figure 6: Gidji II TSF embankment raise – general arrangement

L5946/1998/13 (25 March 2026)

IR-T06 Licence template (v10.0) (May 2024)

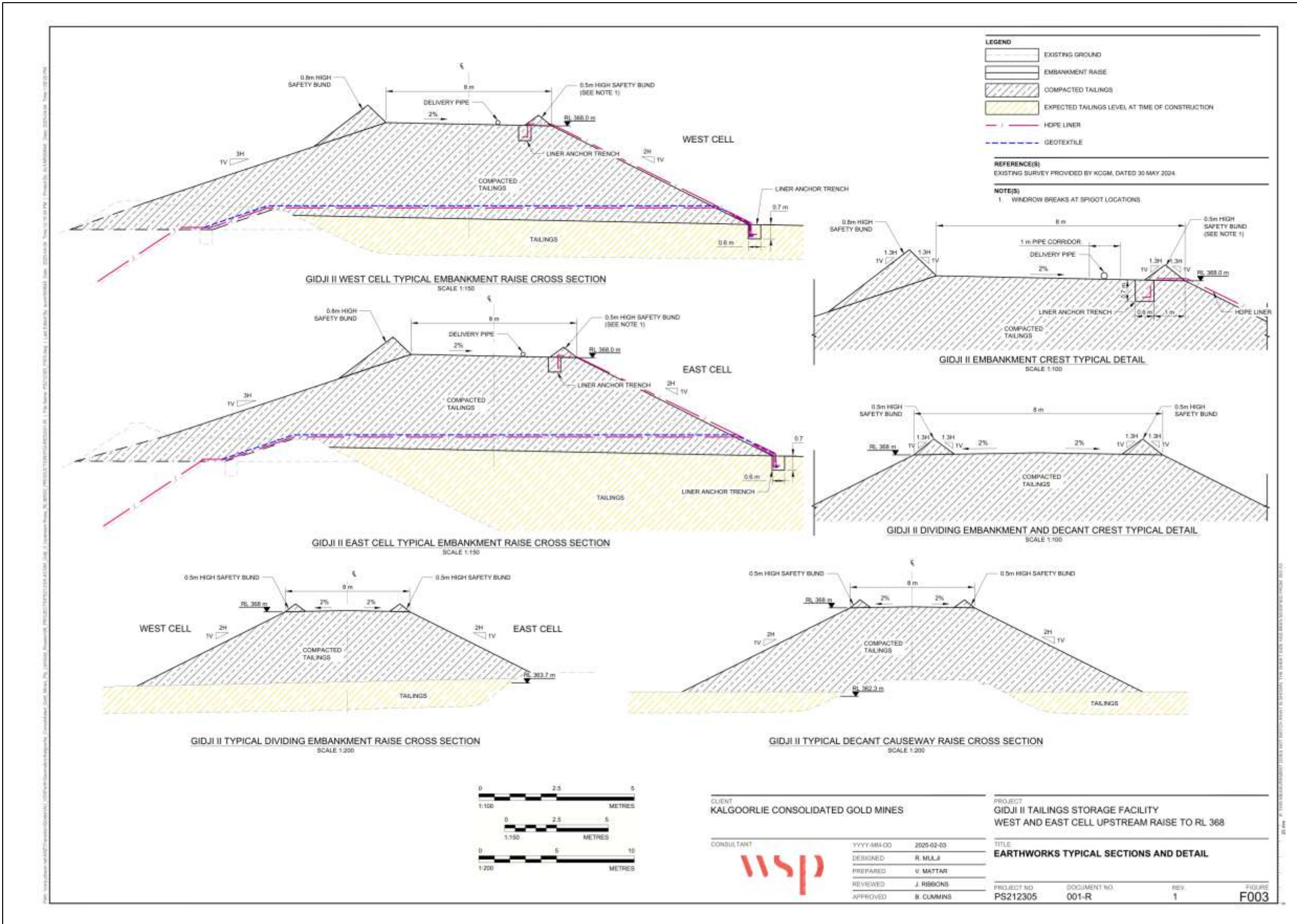


Figure 7: Gidji II embankment raise – embankment sections

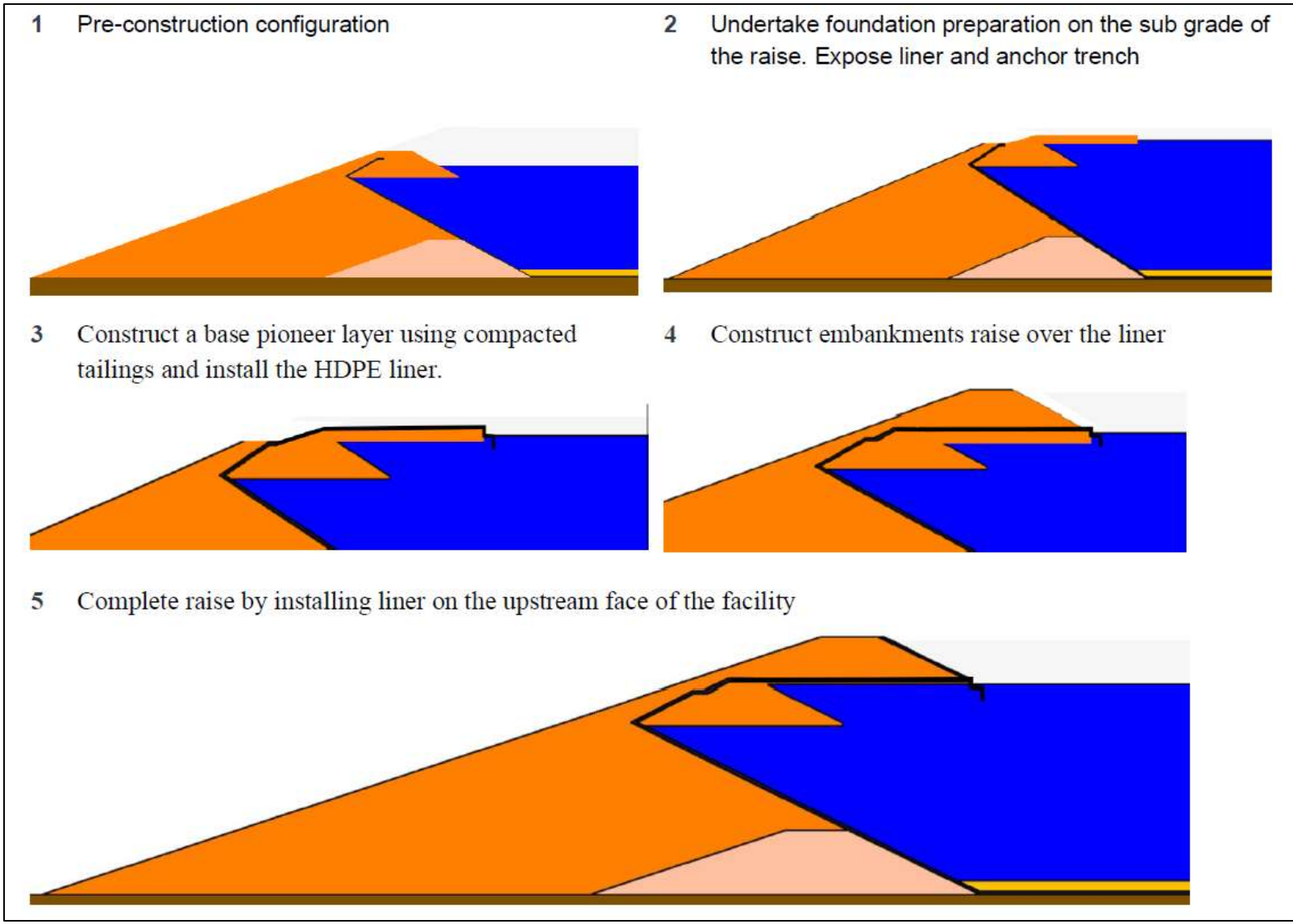


Figure 8: HDPE liner installation methodology

## Schedule 3: Reporting & notification forms

Licence: L5946/1988/13

Licence Holder: Kalgoorlie Consolidated Gold Mines Pty Ltd

Form: N1

Date of breach:

### Notification of detection of the breach of a limit

These pages outline the information that the operator must provide. Units of measurement used in information supplied under Part A and B requirements shall be appropriate to the circumstances of the emission. Where appropriate, a comparison should be made of actual emissions and authorised emission limits.

#### Part A

Licence Number	
Name of operator	
Location of Premises	
Time and date of the detection	

Notification requirements for the breach of a limit	
Emission point reference/ source	
Parameter(s)	
Limit	
Measured value	
Date and time of monitoring	
Measures taken, or intended to be taken, to stop the emission	

#### Part B

Any more accurate information on the matters for notification under Part A.	
Measures taken, or intended to be taken, to prevent a recurrence of the incident.	
Measures taken, or intended to be taken, to rectify, limit or prevent any pollution of the environment which has been or may be caused by the emission.	
The dates of any previous N1 notifications for the Premises in the preceding 24 months.	

Name	
Post	
Signature on behalf of Kalgoorlie Consolidated Gold Mines Pty Ltd	
Date	