



# Licence

## *Environmental Protection Act 1986, Part V*

---

**Licence Holder:**     **Laminex Group Pty Limited**

**Licence:**                 **L7244/1997/13**

---

**Registered office:**     Level 4, 68 Waterloo Road  
MACQUARIE PARK NSW 2113

**ACN:**                      004 093 092

**Premises address:**     Dardanup Particleboard Plant  
184 Moore Rd  
DARDANUP WEST WA 6236  
Being Lot 2 on Diagram 46933 as depicted in Schedule 1

**Issue date:**              Thursday, 9 January 2014

**Amendment date:**     Thursday, 4 December 2025

**Expiry date:**             Saturday, 11 January 2031

**Prescribed premises category**

Schedule 1 of the Environmental Protection Regulations 1987

Category number	Category description	Category production or design capacity	Approved Premises production or design capacity
28	Wood board manufacturing: premises on which particleboard or chipboard is fabricated or manufactured.	500 tonnes or more per year	182,250 tonnes per year

**Conditions**

This Licence is subject to the conditions set out in the attached pages.

.....  
Officer delegated under section 20  
of the *Environmental Protection Act 1986*



## Contents

Introduction	2
Licence conditions	4
1 General	4
2 Emissions	7
3 Monitoring	8
4 Information	9
Schedule 1: Maps	12

## Introduction

This Introduction is not part of the Licence conditions.

### DWER's industry licensing role

The Department of Water and Environmental Regulation (DWER) is a government department for the state of Western Australia in the portfolio of the Minister for Environment. DWER's purpose is to advise on and implement strategies for a healthy environment for the benefit of all current and future Western Australians.

DWER has responsibilities under Part V of the *Environmental Protection Act 1986* (the Act) for the licensing of prescribed premises. Through this process DWER works with the business owners, community, consultants, industry and other representatives to prevent, control and abate pollution and environmental harm to conserve and protect the environment. DWER also monitors and audits compliance with works approvals and licence conditions, takes enforcement action as appropriate and develops and implements licensing and industry regulation policy.

### Licence requirements

This Licence is issued under Part V of the Act. Conditions contained within the Licence relate to the prevention, reduction or control of emissions and discharges to the environment and to the monitoring and reporting of them.

Where other statutory instruments impose obligations on the Premises/Licence Holder the intention is not to replicate them in the licence conditions. You should therefore ensure that you are aware of all your statutory obligations under the Act and any other statutory instrument. Legislation can be accessed through the State Law Publisher website using the following link:

<http://www.slp.wa.gov.au/legislation/statutes.nsf/default.html>

For your Premises relevant statutory instruments include but are not limited to obligations under the:

- Environmental Protection (Unauthorised Discharges) Regulations 2004 – these Regulations make it an offence to discharge certain materials such as contaminated stormwater into the environment other than in the circumstances set out in the Regulations.
- Environmental Protection (Controlled Waste) Regulations 2004 - these Regulations place obligations on you if you produce, accept, transport or dispose of controlled waste.
- Environmental Protection (Noise) Regulations 1997 – these Regulations require noise emissions from the Premises to comply with the assigned noise levels set out in the Regulations.

You must comply with your licence. Non-compliance with your licence is an offence and strict penalties exist for those who do not comply.

Licence holders are also reminded of the requirements of section 53 of the Act which places restrictions on making certain changes to prescribed premises unless the changes are in accordance with a works approval, licence, closure notice or environmental protection notice.

### Licence fees

If you have a licence that is issued for more than one year, you are required to pay an annual licence fee prior to the anniversary date of issue of your licence. Non-payment of annual licence fees will result in your licence ceasing to have effect meaning that it will no longer be valid and you will need to apply for a new licence for your Premises.



### Ministerial conditions

If your Premises has been assessed under Part IV of the Act you may have had conditions imposed by the Minister for Environment. You are required to comply with any conditions imposed by the Minister.

### Premises description and Licence summary

The Dardanup Particleboard Plant is located 9 km southeast of Bunbury. The surrounding region includes semi-rural, industrial, residential, bushland and other land-uses. The site is located on Moore Road in the Shire of Dardanup. The site is zoned General Industrial under the Town Planning Scheme.

The Preston River is approximately 670m west of the premises boundary. The nearest town, Dardanup is 3km south-east of the premises, and the nearest resident is approximately 1.5km from the premises boundary. All neighbouring premises are zoned rural, general farming and softwood sawmill processing.

Raw materials in the form of woodchip and sawdust are dried in a rotary kiln (SPE dryer) before being combined with a resin and pressed to form boards, which are trimmed and sanded before shipment or further processed to add a melamine coat. Process heating is provided by a number of gas-fired heaters, with the dryer fired by a combination of natural gas and sander dust.

The main emissions to air are particulates and formaldehyde, primarily from the dryer and main press. All point sources have pollution abatement equipment installed. The burning of sander dust in the kiln as a fuel significantly contributes to the plant's particulate emissions and a visible plume, which has been the source of complaints from the local community. The Licensee has prepared an environmental improvement plan to implement a staged improvement of the plant's emissions.

This Licence is the result of a department-initiated amendment to extend the duration, to allow sufficient time for a detailed review to be undertaken.

The licences and works approvals issued for the Premises since January 2014 are shown below:

Instrument log		
Instrument	Issued	Description
L7244/1997/13	10/01/2014	Licence reviewed and reissued in new licence template
W5586/2014/1	29/05/2014	Works approval for the WESP
L7244/1997/13	25/02/2016	Licence amendment to include the WESP
L7244/1997/13	04/12/2025	CEO-initiated amendment to extend the duration by 5 years

### Severance

It is the intent of these Licence conditions that they shall operate so that, if a condition or a part of a condition is beyond the power of this Licence to impose, or is otherwise *ultra vires* or invalid, that condition or part of a condition shall be severed and the remainder of these conditions shall nevertheless be valid to the extent that they are within the power of this Licence to impose and are not otherwise *ultra vires* or invalid.

### END OF INTRODUCTION



# Licence conditions

## 1 General

### 1.1 Interpretation

1.1.1 In the Licence, definitions from the *Environmental Protection Act 1986* apply unless the contrary intention appears.

1.1.2 For the purposes of this Licence, unless the contrary intention appears:

**'Act'** means the *Environmental Protection Act 1986*;

**'Annual Audit Compliance Report'** means a report submitted in a form approved by the CEO (relevant guidelines and templates may be available on the department's website);

**'annual period'** means the inclusive period from 1 October until 30 September in the following year;

**'AS 3580.1.1'** means the Australian Standard AS 3580.1.1 *Methods for sampling and analysis of ambient air – Guide to siting air monitoring equipment*;

**'AS 3580.9.3'** means the Australian Standard AS 3580.9.3 *Methods for sampling and analysis of ambient air - Determination of suspended particulate matter – Total suspended particulate matter (TSP) – High volume sampler gravimetric method*;

**'AS 3580.9.6'** means the Australian Standard AS 3580.9.6 *Methods for sampling and analysis of ambient air - Determination of suspended particulate matter - PM<sub>10</sub> high volume sampler with size - selective inlet – Gravimetric method*;

**'AS 4323.1'** means the Australian Standard AS4323.1 *Stationary Source Emissions Method 1: Selection of sampling positions*;

**'AS/NZS 5667.1'** means the Australian Standard AS/NZS 5667.1 *Water Quality – Sampling – Guidance of the design of sampling programs, sampling techniques and the preservation and handling of samples*;

**'AS/NZS 5667.4'** means the Australian Standard AS/NZS 5667.4 *Water Quality – Sampling – Guidance on sampling from lakes, natural and man-made*;

**'averaging period'** means the time over which a limit is measured or a monitoring result is obtained;

**'CEMS'** means continuous emissions monitoring system;

**'CEO'** means Chief Executive Officer;

**'CEO'** for the purpose of correspondence means:

Director General  
Department administering the *Environmental Protection Act 1986*  
Locked Bat 10  
JOONDALUP DC WA 6919  
[info@dwer.wa.gov.au](mailto:info@dwer.wa.gov.au)

**'freeboard'** means the distance between the maximum water surface elevations and the top of retaining banks or structures at their lowest point;

**'LAS<sub>90,30min</sub>'** and **'LAS<sub>10,30min</sub>'** means the A-weighted level exceeded for more than 90% and 10%, respectively of the time over 30 minutes with the meter set to 'Slow' time weighting;



**' $L_{Aeq}(20\text{Hz}-500\text{Hz}),30\text{min}$ '** means the A-weighted equivalent noise level between 20 Hz and 500 Hz (one-third octave bands inclusive) averaged over 30 minutes;

**'Licence'** means this Licence numbered L7244/1997/13 and issued under the Act;

**'Licence Holder'** means the person or organisation named as Licence Holder on page 1 of the Licence;

**'NATA'** means the National Association of Testing Authorities, Australia;

**'NATA accredited'** means in relation to the analysis of a sample that the laboratory is NATA accredited for the specified analysis at the time of the analysis;

**'Non-directional system'** means single microphone sound measuring equipment compliant with Schedule 4 of the *Environmental Protection (Noise) Regulations 1997* and capable of recording overall and one-third octave band statistical noise levels based on the A-weighted sound pressure level with 'Slow' time weighting ( $L_{AS}$ );

**'normal operating conditions'** means any operation of a particular process (including abatement equipment) excluding start-up, shut-down and upset conditions, in relation to stack sampling or monitoring;

**'NOx'** means oxides of nitrogen, calculated as the sum of nitric oxide and nitrogen dioxide and expressed as nitrogen dioxide;

**'PM'** means total particulate matter including both solid fragments of material and miniscule droplets of liquid;

**'PM<sub>10</sub>'** means particles with an aerodynamic diameter of less or equal to 10  $\mu\text{m}$ ;

**'Premises'** means the area defined in the Premises Map in Schedule 1 and listed as the Premises address on page 1 of the Licence;

**'quarterly'** means the 4 inclusive periods from 1 October to 31 December in the previous year, 1 January to 31 March, 1 April to 30 June and 1 July to 30 September in the current year;

**'Schedule 1'** means Schedule 1 of this Licence unless otherwise stated;

**'shut-down'** means the period when plant or equipment is brought from normal operating conditions to inactivity;

**'spot sample'** means a discrete sample representative at the time and place at which the sample is taken;

**'stack test'** means a discrete set of samples taken over a representative period at normal operating conditions;

**'start-up'** means the period when plant or equipment is brought from inactivity to normal operating conditions;

**'STP'** means standard temperature and pressure (0°Celsius and 101.325 kilopascals respectively);

**'USEPA'** means United States (of America) Environmental Protection Agency;

**'USEPA Method 0011'** means the USEPA Method 0011 *Sampling for Selected Aldehyde and Ketone Emissions from Stationary Sources*;

**'USEPA Method 2'** means the USEPA Method 2 *Determination of Stack Gas Velocity and Volumetric Flow Rate (Type S Pitot Tube)*;



**'USEPA Method 5'** means the USEPA Method 5 *Determination of Particulate Matter Emissions from Stationary Sources (Using reference temperature 120°C)*;

**'USEPA Method 6'** means the USEPA Method 6 *Determination of Sulfur Dioxide Emissions from Stationary Sources*;

**'USEPA Method 7D'** means the USEPA Method 7D *Determination of Nitrogen Oxide Emissions from Stationary Sources (Alkaline-Permanganate/Ion Chromatographic Method)*;

**'USEPA Method 7E'** means the USEPA Method 7E *Determination of Nitrogen Oxides Emissions from Stationary Sources (Instrument Analyser Procedure)*;

**'USEPA Method 10'** means the USEPA Method 10 *Determination of Carbon Monoxide Emissions from Stationary Sources (Instrument Analyser Procedure)*;

**'USEPA Method 10B'** means the USEPA Method 10B *Determination of Carbon Monoxide Emissions from Stationary Sources*;

**'USEPA Method 17'** means the USEPA Method 17 *Determination of Particulate Matter Emissions from Stationary Sources (Sample at stack temperature)*;

**'USEPA Method 18'** means the USEPA Method 18 *Measurement of Gaseous Organic Compound Emissions by Gas Chromatography*.

- 1.1.3 Any reference to an Australian or other standard in the Licence means the relevant parts of the standard in force from time to time during the term of this Licence.
- 1.1.4 Any reference to a guideline or code of practice in the Licence means the version of that guideline or code of practice in force from time to time and must include any amendments or replacements to that guideline or code of practice made during the term of this Licence.
- 1.1.5 Nothing in the Licence must be taken to authorise any emission that is not mentioned in the Licence, where the emission amounts to:
- (a) pollution;
  - (b) unreasonable emission;
  - (c) discharge of waste in circumstances likely to cause pollution; or
  - (d) being contrary to any written law.

## **1.2 General conditions**

- 1.2.1 The Licence Holder must operate and maintain all pollution control and monitoring equipment to the manufacturer's specification or any relevant and effective internal management system.
- 1.2.2 The Licence Holder must immediately recover or remove and dispose of spills of environmentally hazardous materials outside an engineered containment system.
- 1.2.3 The Licence Holder must:
- (a) implement all practical measures to prevent stormwater run-off becoming contaminated by the activities on the Premises; and
  - (b) treat contaminated or potentially contaminated stormwater as necessary prior to being discharged from the Premises.<sup>1</sup>

*Note 1: The Environmental Protection (Unauthorised Discharges) Regulations 2004 make it an offence to discharge certain materials into the environment.*

## **1.3 Premises operation**

- 1.3.1 The Licence Holder must ensure that waste material is only stored and/or treated within vessels or compounds provided within the infrastructure detailed in Table 1.3.1.



**Table 1.3.1: Containment infrastructure**

Vessel or compound	Material	Infrastructure requirements
Process water pond	Treated process water from the paper treaters and contaminated or potentially contaminated stormwater from process areas	Lined to achieve a permeability of at least $10^{-9}$ m/s or equivalent

- 1.3.2 The Licence Holder must manage the process water pond such that:
- (a) overtopping of the pond does not occur;
  - (b) a minimum top of embankment freeboard of 300 mm is maintained; and
  - (c) the integrity of the containment infrastructure is maintained.

## 2 Emissions

### 2.1 General

- 2.1.1 The Licence Holder must record and investigate the exceedance of any descriptive or numerical limit specified in any part of section 2 of this Licence.

### 2.2 Point source emissions to air

- 2.2.1 The Licence Holder must ensure that where waste is emitted to air from the emission points in Table 2.2.1 and identified on the map of emission points in Schedule 1 it is done so in accordance with the conditions of this Licence.

**Table 2.2.1: Emission points to air**

Emission point reference	Emission Point	Emission point height (m)	Source, including any abatement
A1	WESP Stack	38.5	SPE dryer via WESP
A2	Main press stacks 1 to 5	22	Main press via cyclone
A3	Paper treatment oven stack 1 and bath stacks 1 and 2	14	Paper treatment
A4	Paper treatment heater stack 1	12	
A5	Melamine heater stacks 3 to 5	12	Melamine press via cyclone
A6	Cooling wheel vents west and east	14	Cooling wheel
A7	SPE dryer stack	29	SPE dryer via cyclone during start-up and shut-down when fired on natural gas only

- 2.2.2 The Licence Holder must not cause or allow point source emissions to air greater than the limits listed in Table 2.2.2.

**Table 2.2.2: Point source emission limits to air**

Emission point reference	Parameter	Limit (including units) <sup>1</sup>	Averaging period
A1	PM	50 mg/m <sup>3</sup>	Stack test (60 minute average)

Note 1: All units are referenced to STP, wet.





## 3 Monitoring

### 3.1 General monitoring

- 3.1.1 The Licence Holder must ensure that all laboratory samples are submitted to and tested by a laboratory with current NATA accreditation for the parameters being measured unless indicated otherwise in the relevant table.
- 3.1.2 The Licence Holder must ensure that:
- (a) monthly monitoring is undertaken at least 15 days apart;
  - (b) quarterly monitoring is undertaken at least 45 days apart; and
  - (c) annual monitoring is undertaken at least 9 months apart.
- 3.1.3 The Licence Holder must record production or throughput data and any other process parameters relevant to any monitoring undertaken.
- 3.1.4 The Licence Holder must ensure that all monitoring equipment used on the Premises to comply with the conditions of this Licence is calibrated in accordance with the manufacturer's specifications and the requirements of the Licence.
- 3.1.5 The Licence Holder must, where the requirements for calibration cannot be practicably met, or a discrepancy exists in the interpretation of the requirements, bring these issues to the attention of the CEO accompanied with a report comprising details of any modifications to the methods.

### 3.2 Monitoring of point source emissions to air

- 3.2.1 The Licence Holder must undertake the monitoring in Table 3.2.1 according to the specifications in that table.

**Table 3.2.1: Monitoring of point source emissions to air**

Emission point reference	Parameter	Units <sup>1</sup>	Frequency <sup>2</sup>	Method
A1	PM	mg/m <sup>3</sup> g/s	Quarterly	USEPA Method 5 or 17
A1 – A3	Formaldehyde			USEPA Method 0011
	Acetone			USEPA Method 18
A4 – A5	Sulfur dioxide			USEPA Method 6 or 8
	NOx			USEPA Method 7E or 7D
	Carbon monoxide			USEPA Method 10 or 10B

Note 1: Units for emission point A1 are referenced to STP, wet. Units for emission points A2 to A5 are referenced to STP, dry.

Note 2: Monitoring must be undertaken to reflect normal operating conditions

- 3.2.2 The Licence Holder must ensure that sampling required under Condition 3.2.1 of the Licence is undertaken at sampling locations in accordance with AS 4323.1.
- 3.2.3 The Licence Holder must ensure that all non-continuous sampling and analysis undertaken pursuant to condition 3.2.1 is undertaken by a holder of NATA accreditation for the relevant methods of sampling and analysis.

### 3.3 Ambient environmental quality monitoring

- 3.3.1 The Licence Holder must undertake the monitoring in Tables 3.3.1, 3.3.2 and 3.3.3 according to the specifications in those tables.
- 3.3.2 The Licence Holder must ensure that the siting of ambient air monitoring equipment is in accordance with AS 3580.1.1.





**Table 3.3.1: Monitoring of ambient air quality**

Monitoring point reference and location on map of monitoring locations	Parameter	Units <sup>1</sup>	Averaging period	Frequency	Method
AQ1 – AQ4	Formaldehyde	µg/m <sup>3</sup>	24 hours	Quarterly	Passive air sampler
	Benzene				
	Toluene				
AQ1 – AQ3	PM <sub>10</sub>				AS 3580.9.6

**Table 3.3.2: Monitoring of ambient surface water quality**

Monitoring point reference and location on map of monitoring locations	Parameter	Units	Averaging period	Frequency	Method
WQ1 – WQ2	pH <sup>1</sup>	N/A	Spot sample	Monthly when flowing	AS/NZS 5667.1 and AS/NZS 5667.4
	Total dissolved solids	mg/L			
	Ammoniacal nitrogen as nitrogen				
	Total suspended solids				
	COD				
	Formaldehyde				

Note 1: In-field non-NATA accredited sampling permitted

**Table 3.3.3: Monitoring of ambient noise**

Monitoring point reference and location on map of monitoring locations	Parameter	Units <sup>1</sup>	Averaging period	Frequency	Method
SL1 – SL8	L <sub>AS90,30min</sub>	dB	30 minutes	Annually	Non-directional system
	L <sub>AS10,30min</sub>				
	L <sub>Aeq(20Hz-500Hz),30min</sub>				
	Audio recording	N/A			N/A
	List of dominant noise sources and locations	N/A			

## 4 Information

### 4.1 Records

#### 4.1.1 All information and records required by the Licence must:

- be legible;
- if amended, be amended in such a way that the original and subsequent amendments remain legible or are capable of retrieval;
- except for records listed in 4.1.1(d) be retained for at least 6 years from the date the records were made or until the expiry of the Licence or any subsequent licence; and
- for those following records, be retained until the expiry of the Licence and any subsequent licence:
  - off-site environmental effects; or
  - matters which affect the condition of the land or waters.



- 4.1.2 The Licence Holder must ensure that:
- (a) any person left in charge of the Premises is aware of the conditions of the Licence and has access at all times to the Licence or copies thereof; and
  - (b) any person who performs tasks on the Premises is informed of all of the conditions of the Licence that relate to the tasks which that person is performing.
- 4.1.3 The Licence Holder must:
- (a) undertake an audit of their compliance with the conditions of this Licence during the preceding annual period; and
  - (b) prepare and submit to the CEO, by no later than 30 November in each year, an Annual Audit Compliance Report in the approved form.
- 4.1.4 The Licence Holder must implement a complaints management system that as a minimum records the number and details of complaints received concerning the environmental impact of the activities undertaken at the Premises and any action taken in response to the complaint.

## 4.2 Reporting

- 4.2.1 The Licence Holder must submit to the CEO an Annual Environmental Report by 30 November in each year.

Table 4.2.1: Annual Environmental Report	
Condition or table (if relevant)	Parameter
-	Summary of any failure or malfunction of any pollution control equipment and any environmental incidents that have occurred during the annual period and any action taken
3.2.1	Monitoring of point source emissions to air
3.3.1	Monitoring of ambient air quality
3.3.2	Monitoring of ambient surface water quality
3.3.3	Monitoring of ambient noise
4.1.3	Compliance
4.1.4	Complaints summary

- 4.2.2 The Licence Holder must ensure that the Annual Environmental Report also contains:
- (a) any relevant process, production or operational data recorded under Condition 3.1.3; and
  - (b) an assessment of the information contained within the report against previous monitoring results and Licence limits.
- 4.2.3 The Licence Holder must submit the information in Table 4.2.2 to the CEO according to the specifications in that table.

Table 4.2.2: Non-annual reporting requirements				
Condition or table (if relevant)	Parameter	Reporting period	Reporting date (after end of the reporting period)	Format or form
-	Copies of original monitoring reports submitted to the Licence Holder by third parties	Not Applicable	Within 14 days of the CEOs request	As received by the Licence Holder from third parties

## 4.3 Notification

- 4.3.1 The Licence Holder must ensure that the parameters listed in Table 4.3.1 are notified to the CEO in accordance with the notification requirements of the table.



<b>Table 4.3.1: Notification requirements</b>			
<b>Condition or table (if relevant)</b>	<b>Parameter</b>	<b>Notification requirement<sup>1</sup></b>	<b>Format or form<sup>2</sup></b>
3.1.5	Calibration report	As soon as practicable.	None specified



## Schedule 1: Maps

### Premises map

The Premises is shown in the map below. The red line depicts the Premises boundary.

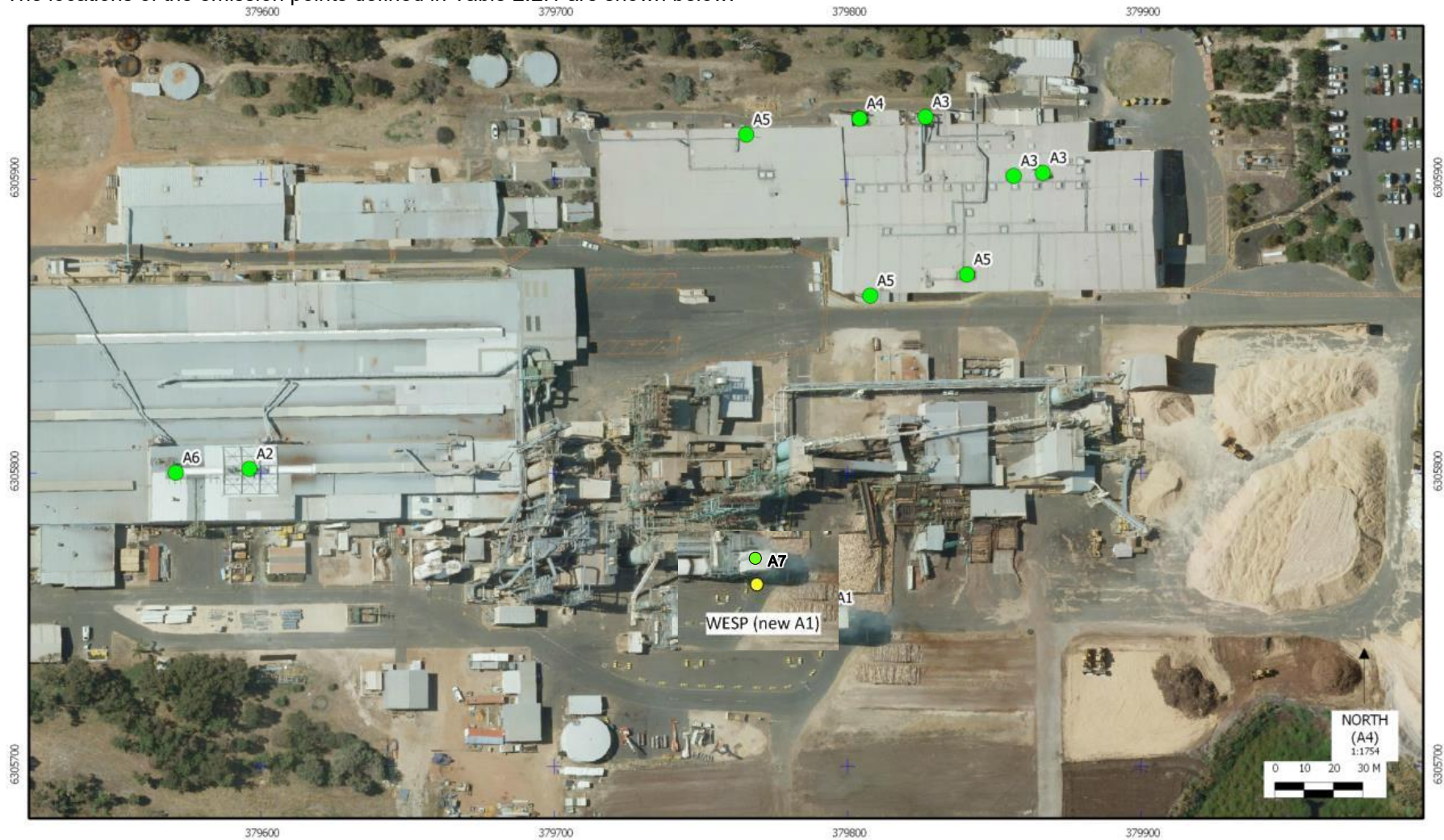






## Map of emission points

The locations of the emission points defined in Table 2.2.1 are shown below.







### Map of monitoring locations

The locations of the monitoring points defined in Tables 3.3.1, 3.3.2, and 3.3.3 are shown below.

