



<b>Licence number</b>	L9432/2024/1
<b>Licence holder</b>	Strike South West Pty Ltd
<b>ACN</b>	118 251 497
<b>Registered business address</b>	Level 2, 66 Kings Park Road WEST PERTH WA 6005
<b>DWER file number</b>	DER2023/000742
<b>Duration</b>	07/10/2025 to 06/10/2045
<b>Date of issue</b>	07/10/2025
<b>Premises details</b>	Walyering Processing Facility Brand Highway CATABY WA 6507 Legal description Part of Lot 3907 on Deposited Plan 209656 Part of Petroleum Production Licence L23 As defined by the premises map and coordinates in the issued licence

Prescribed premises category description (Schedule 1, <i>Environmental Protection Regulations 1987</i> )	Assessed design capacity
Category 10: Oil or gas production from wells: premises, whether on land or offshore, on which crude oil, natural gas or condensate is extracted from below the surface of the land or the seabed, as the case requires, and is treated or separated to produce stabilized crude oil, purified natural gas or liquefied hydrocarbon gases.	250,000 tonnes per year of natural gas (export) 40 terajoules per day (export)

This licence is granted to the licence holder, subject to the attached conditions, on 7 October 2025,  
by:

an officer delegated under section 20 of the *Environmental Protection Act 1986* (WA)

## Licence history

Date	Reference number	Summary of changes
07/10/2025	L9432/2024/1	Licence granted.

## Interpretation

In this licence:

- (a) the words 'including', 'includes' and 'include' in conditions mean "including but not limited to", and similar, as appropriate;
- (b) where any word or phrase is given a defined meaning, any other part of speech or other grammatical form of that word or phrase has a corresponding meaning;
- (c) where tables are used in a condition, each row in a table constitutes a separate condition;
- (d) any reference to an Australian or other standard, guideline, or code of practice in this licence:
  - (i) if dated, refers to that particular version; and
  - (ii) if not dated, refers to the latest version and therefore may be subject to change over time;
- (e) unless specified otherwise, any reference to a section of an Act refers to that section of the EP Act; and
- (f) unless specified otherwise, all definitions are in accordance with the EP Act.

**NOTE:** This licence requires specific conditions to be met but does not provide any implied authorisation for other emissions, discharges, or activities not specified in this licence.

# Licence conditions

The licence holder must ensure that the following conditions are complied with:

## Infrastructure and equipment

1. The licence holder must ensure that the site infrastructure and equipment listed in Table 1 and located at the corresponding infrastructure location is maintained and operated in accordance with the corresponding operational requirement set out in Table 1.

**Table 1: Infrastructure and equipment requirements**

	Site infrastructure	Operational requirement	Infrastructure location
1	Gas processing infrastructure	<ul style="list-style-type: none"> <li>• All containment bunds must be maintained: <ul style="list-style-type: none"> <li>– in a fit for purpose condition for containing liquids and free of cracks or damage; and</li> <li>– with capacity to contain not less than 110% of the volume of the largest storage vessel or 25% of the total storage volume if multiple storage vessels occur within the bund; and</li> <li>– with drain valves locked unless they are in use.</li> </ul> </li> <li>• The gas processing infrastructure must be operated with continuous monitoring via a PLC programmed to respond to signals from the production facility and the Perth Operations Centre.</li> <li>• Facility blowdown must not be initiated when the wind direction, measured in accordance with condition 5, is between 160-200°, or 250-335°.</li> </ul>	'2', '3', '4', '5', '6' and '7' as depicted in the 'Infrastructure map' in Schedule 1 Figure 2
2	Cold vent stack and Condensate flash vessel	<ul style="list-style-type: none"> <li>• The condensate flash vessel must be operated with a measurement system that is maintained to continuously measure the mass flow rate of gas vented from the vessel outlet to the cold vent stack.</li> <li>• The mass flow rate of gas vented from the cold vent during blow-down events must be manually calculated based on total facility capacity and time taken to blowdown.</li> </ul>	'9' as depicted in the 'Infrastructure map' in Schedule 1 Figure 2
3	Methanol and corrosion inhibitor storage and Shed/Chemical store	<ul style="list-style-type: none"> <li>• All hydrocarbons and chemicals must be stored within a containment bund or chemical storage cabinet.</li> <li>• All containment bunds must be maintained: <ul style="list-style-type: none"> <li>– in a fit for purpose condition for containing liquids and free of cracks or damage;</li> <li>– with capacity to contain not less than 110% of the volume of the largest storage vessel or 25% of the total storage volume if multiple storage vessels occur within the bund; and</li> <li>– with drain valves, where present, locked unless they are in use.</li> </ul> </li> </ul>	'10' and '11' as depicted in the 'Infrastructure map' in Schedule 1 Figure 2

	Site infrastructure	Operational requirement	Infrastructure location
4	Produced water storage tanks	<ul style="list-style-type: none"> <li>Produced water must be stored in the Produced water storage tanks.</li> <li>The containment bund must be maintained: <ul style="list-style-type: none"> <li>in a fit for purpose condition for containing liquids and free of cracks or damage;</li> <li>with capacity to contain not less than 110% of the volume of one condensate storage tank; and with drain valves locked unless they are in use.</li> </ul> </li> <li>Produced water storage tanks must be operated with high and high-high level sensors.</li> <li>Dry break couplings must be used when transferring produced water from storage to tankers for offsite disposal.</li> </ul>	NA
5	Condensate storage	<ul style="list-style-type: none"> <li>The containment bund must be maintained: <ul style="list-style-type: none"> <li>in a fit for purpose condition for containing liquids and free of cracks or damage;</li> <li>with capacity to contain not less than 110% of the volume of one condensate storage tank; and with drain valves locked unless they are in use.</li> </ul> </li> <li>Condensate storage tanks must be operated with high and high-high level sensors.</li> <li>The condensate storage tank high-high level sensors must activate a shut off valve when triggered.</li> <li>The condensate transfer system must be operated with an automatic cut-off valve.</li> </ul>	'13' and '14' as depicted in the 'Infrastructure map' in Schedule 1 Figure 2
6	Weather monitoring station	<ul style="list-style-type: none"> <li>The weather monitoring station must be operated with a telecommunication system that allows monitoring data generated to be viewed and responded to by the Perth Operations Centre.</li> <li>The weather monitoring station must be maintained and calibrated in accordance with the manufacturer's specifications.</li> </ul>	Within the premises boundary indicated in the 'Premises map' in Schedule 1, Figure 1, in a flat open area substantially free of obstructions where the anemometer is distant from any obstruction by at least ten times the height of the obstruction.

## Emissions and discharges

### Air emissions

- The licence holder must ensure that the emissions specified in Table 2, are discharged only from the corresponding discharge point and only at the corresponding discharge point location.

**Table 2: Authorised discharge points**

Emission	Emission Point	Minimum stack height (m AGL)	Emission point location
Process gas (includes VOCs – BTEX)	Cold vent – A1	5	'9' as depicted in the 'Infrastructure map' in Schedule 1 Figure 2

**Air emissions – Specified actions**

3. The licence holder shall take the relevant specified management action in the case of an event in Table 3.

**Table 3: Management actions**

Emission Point	Event Reference	Event	Management action
Cold vent – A1	EA1	Start up, shut down, upset or emergency conditions	The licence holder shall take all practical measure to minimise emissions

**Monitoring**

4. The licence holder must monitor emissions during operation in accordance with the requirements specified in Table 4 and record the results of all such monitoring.

**Table 4: Monitoring of discharges to air**

Emission point	Monitoring location	Parameter	Frequency <sup>1</sup>	Averaging period	Unit	Method
Cold vent '9' in the 'Infrastructure map' in Schedule 1 Figure 2	Condensate flash vessel outlet '5' in the 'Infrastructure map' in Schedule 1 Figure 2	Mass flow rate	Continuous	hourly	kg/hr or g/s	None specified

NOTE 1: If the mass flow rate exceeds the scale of the measurement system during commissioning or blow-down events the mass flow rate must be manually calculated for the event.

**Meteorological monitoring**

5. The licence holder must monitor the ambient meteorological conditions at the premises during operation in accordance with the requirements specified in Table 5 and record the results of all such monitoring.

**Table 5: Monitoring of meteorological conditions**

Monitoring location	Parameter	Units	Minimum monitoring height (m AGL)	Frequency	Averaging period	Sampling Method
Weather monitoring station located on the premises	Wind speed	m/s	10 m	Continuous	1 hour	None specified
	Wind direction	Degrees				

## Records and reporting

6. During any non-standard venting event, the licensee shall record the following information:
  - (a) Information as to why the venting was required;
  - (b) the date, time and duration of venting;
  - (c) type of gas/product vented;
  - (d) estimated volume of gas/product vented; and
  - (e) wind direction and speed during venting
7. The licence holder must record the following information in relation to complaints received by the licence holder (whether received directly from a complainant or forwarded to them by the Department or another party) about any alleged emissions from the premises:
  - (a) the name and contact details of the complainant, (if provided);
  - (b) the time and date of the complaint;
  - (c) the complete details of the complaint and any other concerns or other issues raised; and
  - (d) the complete details and dates of any action taken by the licence holder to investigate or respond to any complaint.
8. The licence holder must maintain accurate and auditable books including the following records, information, reports, and data required by this licence:
  - (a) the calculation of fees payable in respect of this licence;
  - (b) any maintenance of infrastructure that is performed in the course of complying with condition 1 of this licence;
  - (c) monitoring programmes undertaken in accordance with conditions 4 and 5 of this licence;
  - (d) management actions undertaken in accordance with condition 3 of this licence; and
  - (e) complaints received under condition 7 of this licence.
9. The books specified under condition 8 must:
  - (a) be legible;
  - (b) if amended, be amended in such a way that the original version(s) and any subsequent amendments remain legible and are capable of retrieval;
  - (c) be retained by the licence holder for the duration of the licence; and

- (d) be available to be produced to an inspector or the CEO as required.

## Reporting

10. The licence holder must:
- undertake an audit of their compliance with the conditions of this licence during the preceding annual period, and
  - prepare and submit to the CEO by no later than 60 days after the end of that annual period an Annual Audit Compliance Report in the approved form.
11. The licence holder must:
- prepare an Environmental Report that provides information in accordance with Table 6 for the preceding two annual periods, and
  - submit that Environmental Report to the CEO by 31 July 2027 and biennially thereafter.

**Table 6: Environmental reporting requirements**

Condition	Requirement
3 - Monitoring of discharges to air	<p>Tabulated monitoring data results and time-series graphs in Microsoft Excel format for each monitoring location showing all parameters over a minimum three-year period (where sufficient data allows).</p> <p>An interpretation of the monitoring data including comparison to historical trends and emission limits (where applicable).</p> <p>A tabulated summary of:</p> <ul style="list-style-type: none"><li>• emission limit exceedances;</li><li>• investigations and actions undertaken in response to the exceedances;</li><li>• events which were exempt to the emission limit; and</li><li>• management actions undertaken.</li></ul> <p>Copies of original monitoring, laboratory and analysis reports submitted by third parties.</p>
5 - Complaints	Summary of complaints received, and any action taken to investigate or respond to any complaint

12. The licence holder must ensure that the parameters listed in Table 7 are notified to the Department in accordance with the notification requirements of the table.

**Table 7: Notification requirements**

Condition	Parameter	Notification requirement
3	Any non-standard flaring event	As soon as practicable but no later than 5pm of the next usual working day.



## Definitions

In this licence, the terms in Table 8 have the meanings defined.

**Table 8: Definitions**

Term	Definition
m AGL	means metres above ground level
Blowdown	Venting of the whole or part of the gas plant gas inventory for environmental commissioning, emergency or maintenance purposes.
biennially	means every two years.
ACN	Australian Company Number
Annual Audit Compliance Report (AACR)	means a report submitted in a format approved by the CEO (relevant guidelines and templates may be available on the Department's website).
annual period	a 12 month period commencing from 1 July until 30 June of the immediately following year.
books	has the same meaning given to that term under the EP Act.
BTEX	means the volatile organic compounds benzene, toluene, ethylbenzene and xylene
CEO	means Chief Executive Officer of the Department. "submit to / notify the CEO" (or similar), means either: Director General Department administering the <i>Environmental Protection Act 1986</i> Locked Bag 10 Joondalup DC WA 6919 or: <a href="mailto:info@dwer.wa.gov.au">info@dwer.wa.gov.au</a>
Department	means the department established under section 35 of the <i>Public Sector Management Act 1994</i> (WA) and designated as responsible for the administration of the EP Act, which includes Part V Division 3.
discharge	has the same meaning given to that term under the EP Act.
emission	has the same meaning given to that term under the EP Act.
EP Act	<i>Environmental Protection Act 1986</i> (WA)
licence	refers to this document, which evidences the grant of a licence by the CEO under section 57 of the EP Act, subject to the specified conditions contained within.
licence holder	refers to the occupier of the premises, being the person specified on

Term	Definition
	the front of the licence as the person to whom this licence has been granted.
premises	refers to the premises to which this licence applies, as specified at the front of this licence and as shown on the premises map Figure 1 in Schedule 1 to this licence.
Produced Water	means water that is separated from the process gas during the processing of natural gas
Perth Operations Centre	means the location in Perth, Western Australia where the gas processing infrastructure is remotely operated and monitored from.
prescribed premises	has the same meaning given to that term under the EP Act.
VOCs	means volatile organic compounds

---

**END OF CONDITIONS**

# Schedule 1: Maps

## Premises map

The boundary of the prescribed premises is shown in the map below (Figure 1).

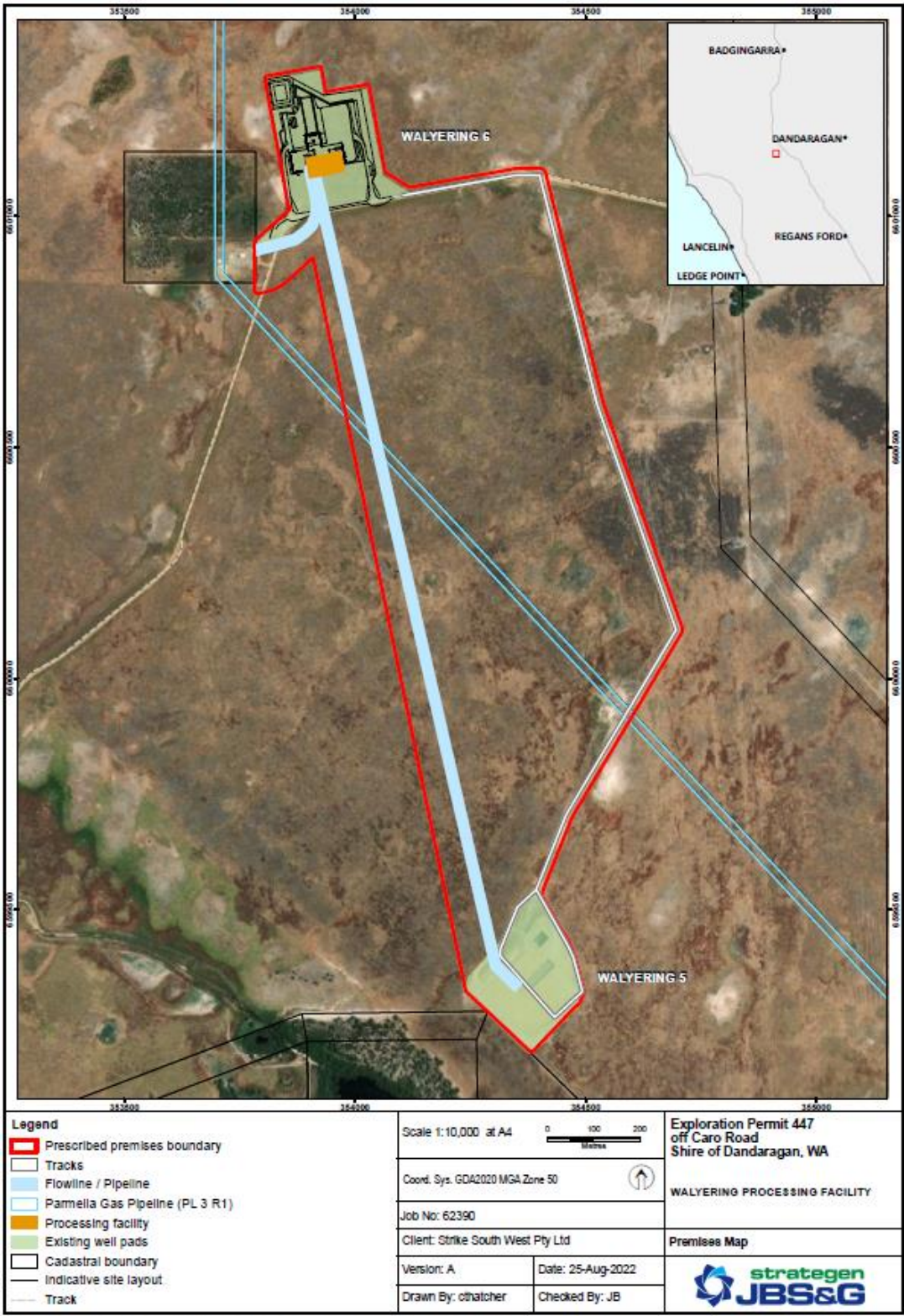


Figure 1: Map of the boundary of the prescribed premises

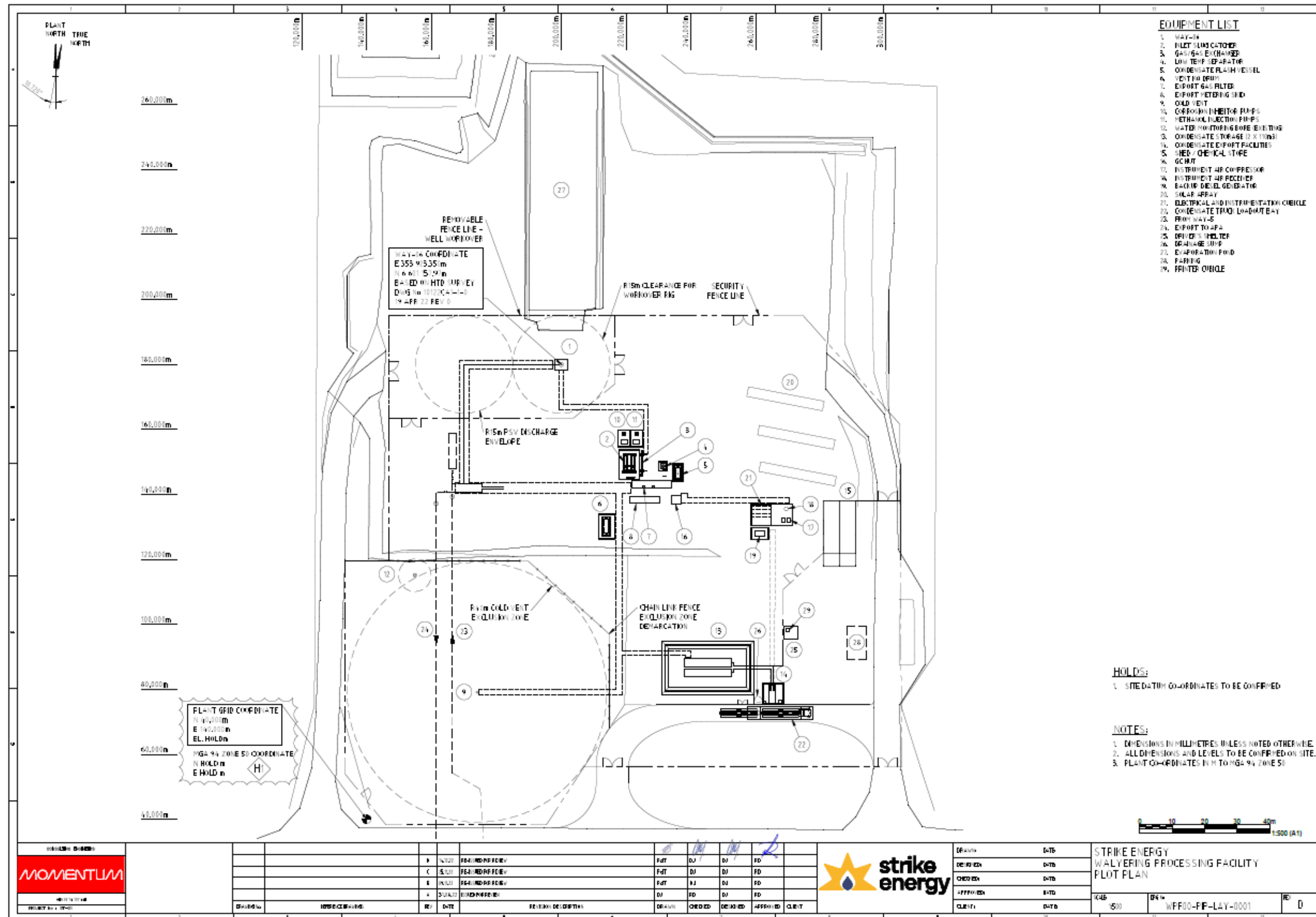


Figure 2: Infrastructure layout and emission point location plan

## Schedule 2: Premises boundary

The corners of the premises boundary are the coordinates listed in Table 9 .

**Table 9: Premises boundary coordinates (GDA2020, MGA Zone 50)**

Point	Easting	Northing	Point	Easting	Northing
1.	353804.5	6601300	14.	354385	6599552
2.	353921.7	6601323	15.	354473.1	6599420
3.	353936	6601267	16.	354491	6599324
4.	354026	6601284	17.	354498.6	6599314
5.	354064.1	6601094	18.	354381.9	6599190
6.	354117.7	6601061	19.	354240	6599321
7.	354404.3	6601100	20.	353908.3	6600909
8.	354490	6600713	21.	353828.3	6600842
9.	354525.9	6600630	22.	353784.3	6600832
10.	354599	6600563	23.	353781.4	6600944
11.	354640.6	6600173	24.	353857.9	6601013
12.	354605.4	6599925	25.	353856.9	6601019
13.	354419.8	6599645	26.	353853.9	6601023