



Works Approval

Works approval number W3001/2025/1
Works approval holder Pilbara Iron Pty Ltd
ACN 107 216 535
Registered business address Central Park - Level 18
152-158 St Georges Terrace
PERTH WA 6000
DWER internal number INS-0003001
Duration 06/10/2025 to 05/10/2028
Date of issue 06/10/2025
Premises details Arches North Strategic Laydown
Legal description -
Lot 63 on Deposited Plan 54397
Certificate of Title Volume LR3119 Folio 871
Lease I123390; and Miscellaneous licence L47/225
ROEBOURNE WA 6718

As defined by the coordinates in Schedule 2.

Prescribed premises category description (Schedule 1, <i>Environmental Protection Regulations 1987</i>)	Assessed design/production capacity
Category 61A - Solid waste facility: premises (other than premises within category 67A) on which solid waste produced on other premises is stored, reprocessed, treated, or discharged onto land.	829,900 tonnes
Category 12 - Screening etc. of material: premises (other than premises within category 5 or 8) on which material extracted from the ground is screened, washed, crushed, ground, milled, sized or separated. Category 13 - Crushing of building material: premises on which waste building or demolition material (for example, bricks, stones or concrete) is crushed or cleaned.	820,000 tonnes per annum

This works approval is granted to the works approval holder, subject to the attached conditions, on 06 October 2025, by:

an officer delegated under section 20 of the *Environmental Protection Act 1986* (WA)

Works approval history

Date	Reference number	Summary of changes
06/10/2025	W3001/2025/1	New works approval issued

Interpretation

In this works approval:

- (a) the words ‘including’, ‘includes’ and ‘include’ in conditions mean “including but not limited to”, and similar, as appropriate;
- (b) where any word or phrase is given a defined meaning, any other part of speech or other grammatical form of that word or phrase has a corresponding meaning;
- (c) where tables are used in a condition, each row in a table constitutes a separate condition;
- (d) any reference to an Australian or other standard, guideline, or code of practice in this works approval:
 - (i) if dated, refers to that particular version; and
 - (ii) if not dated, refers to the latest version and therefore may be subject to change over time;
- (e) unless specified otherwise, any reference to a section of an Act refers to that section of the EP Act; and
- (f) unless specified otherwise, all definitions are in accordance with the EP Act.

NOTE: This works approval requires specific conditions to be met but does not provide any implied authorisation for other emissions, discharges, or activities not specified in this works approval.

Works approval conditions

The works approval holder must ensure that the following conditions are complied with:

Construction phase

Infrastructure and equipment

1. The works approval holder must:
 - (a) construct and/or install the infrastructure and/or equipment;
 - (b) in accordance with the corresponding design and construction / installation requirements; and
 - (c) at the corresponding infrastructure location, as set out in Table 1.

Table 1: Design and construction / installation requirements

	Infrastructure	Design and construction / installation requirements	Infrastructure location
1.	Material stockpile areas	Separate stockpile areas for the following materials: <ol style="list-style-type: none"> a) Railway ballast; b) Segregated railway ballast awaiting sampling and analysis (including asbestos); and c) Crushed rock product (processed material). 	As shown in Figure 2
2.	Mobile crushing and screening plant	Mobile plant consisting of the following components: <ol style="list-style-type: none"> a) Cone crusher b) Heavy duty first screen c) Final screen. Incorporate angle-adjustable stockpiling conveyors to minimise drop heights. Fitted with water sprays and dust covers for dust suppression.	Within premises boundary
3.	Stormwater infrastructure (Earthen bund)	Designed and constructed around perimeter of the premises to divert stormwater around the work area.	Perimeter of premises
4.	Earthen sumps	Designed and constructed to contain stormwater and process/wash water generated at the premises.	As shown in Figure 2

Compliance reporting

2. The works approval holder must within 30 calendar days of the items of infrastructure or equipment required by condition 1 being constructed and/or installed:
 - (a) undertake an audit of their compliance with the requirements of condition 1; and,
 - (b) prepare and submit to the CEO an Environmental Compliance Report on that compliance.

3. The Environmental Compliance Report required by condition 2, must include as a minimum the following:
- (a) certification that items 1 and 2, as specified in condition 1, have been constructed/installed in accordance with the relevant requirements specified in condition 1;
 - (b) certification by a civil engineer that items 3 and 4, as specified in condition 1, have been constructed in accordance with the relevant requirements specified in condition 1;
 - (c) as constructed site plan/s for items 1, 3 and 4 specified in condition 1; and
 - (d) be signed by a person authorised to represent the works approval holder and contains the printed name and position of that person.

Time limited operations phase

Commencement and duration

4. The works approval holder may only commence time limited operations for the items of infrastructure identified in condition 1 where the Environmental Compliance Report as required by condition 2 has been submitted by the works approval holder.
5. The works approval holder may conduct time limited operations for the items of infrastructure specified in condition 6:
- (a) for a period not exceeding 180 calendar days from the day the works approval holder meets the requirements of condition 4; or
 - (b) until such time as a licence for the specified infrastructure is granted in accordance with Part V of the *Environmental Protection Act 1986*, if one is granted before the end of the period specified in condition 5(a).

Infrastructure and equipment operational requirements

6. During time limited operations, the works approval holder must ensure that the premises infrastructure and equipment listed in and located at the corresponding infrastructure location is maintained and operated in accordance with the corresponding operational requirement set out in Table 2.

Table 2: Infrastructure and equipment requirements during time limited operations

	Infrastructure/equipment	Operational requirements	Infrastructure location
1.	Material stockpile areas	<p>Maintain separate stockpile areas for the following materials:</p> <ul style="list-style-type: none"> a) Railway ballast; b) Segregated railway ballast awaiting sampling and analysis (including asbestos); c) Crushed rock product (processed material). <p>Regular inspection of material stockpiles and undertake dust suppression measures as needed.</p>	As shown in Figure 2.

	Infrastructure/equipment	Operational requirements	Infrastructure location
2.	Mobile crushing and screening plant	Use of angle-adjustable stockpiling conveyors to minimise drop heights. Maintain and operate water sprays and dust covers for dust suppression.	Within premises boundary
3.	Earthen bund	Maintained to divert stormwater around the work area.	Perimeter of premises
4.	Earthen sumps	Maintained to contain stormwater and process/wash water generated at the premises.	As shown in Figure 2.
5.	Mobile plant refuelling trucks and associated equipment	Fitted with dry brake coupler, pressure valve regulators and over fill protection mechanism. Drip pads and spill kit used during refuelling. Fuel spills to be cleaned up and contaminated soil disposed offsite at a licensed facility (where practical).	Within premises boundary

Material specifications

7. The works approval holder must only accept onto the premises materials for recycling, processing and storage that meet the specifications set out in Table 3.

Table 3: Material acceptance specifications

Material type	Rate at which material is received	Acceptance specifications
Railway ballast and rail civil material	Capacity of 820,000 tonnes at any one time	Recovered railway ballast material and rail civil material from the Integrated Rail Network (IRN). Concrete sleepers from the IRN. Must not contain any visible asbestos or ACM.
Concrete sleepers	Capacity of 9,900 tonnes at any one time	

8. The works approval holder must ensure that the asbestos content of any railway ballast material and rail civil material does not exceed the contamination limit of 0.001% w/w for asbestos (in any form).

Material inputs and outputs monitoring

9. The works approval holder must undertake the monitoring in Table 4 according to the specifications in Table 4 during time limited operations.

Table 4: Monitoring of inputs and outputs

Material type	Units	Frequency
Railway ballast and rail civil material inputs (accepted onto site for storage and/or processing)	tonnes	Ongoing
Concrete sleepers accepted onto site	tonnes	Ongoing
Crushed/screened material product (deemed suitable for reuse)	tonnes	Ongoing
Material rejects (materials disposed offsite to a suitably licensed facility).	tonnes	Ongoing

Report on time limited operations

10. The works approval holder must submit to the CEO a report on the time limited operations within 30 calendar days of the completion date of time limited operations or 30 calendar days before the expiration date of the works approval, whichever is the sooner.
11. The works approval holder must ensure the report required by condition 10 includes the following:
- a summary of the time limited operations, including timeframes;
 - material input and output tonnages;
 - a review of performance and compliance against the conditions of the works approval;
 - a summary of the environmental performance of all infrastructure as constructed or installed (as applicable);
 - where the manufacturer's design specifications or the conditions of this works approval have not been met, what measures will the works approval holder take to meet them, and what timeframes will be required to implement those measures; and
 - asbestos sampling and testing report in accordance with condition 12.

Records and reporting (general)

12. The works approval holder must maintain accurate and auditable records of all asbestos testing undertaken in accordance with condition 8, including:
- details of the sample size;
 - a statement of limit of detection of the analysis;
 - results in relation to asbestos detected (exceedance of contamination limit of 0.001% w/w for asbestos), or not detected;

- (d) a description of any asbestos detected and an estimate of the concentration of asbestos detected; and
 - (e) for material deemed to exceed the contamination limit of 0.001% w/w for asbestos, a description of the tonnage and disposal facility.
- 13.** The works approval holder must record the following information in relation to complaints received by the works approval holder (whether received directly from a complainant or forwarded to them by the Department or another party) about any alleged emissions from the premises:
- (a) the name and contact details of the complainant, (if provided);
 - (b) the time and date of the complaint;
 - (c) the complete details of the complaint and any other concerns or other issues raised; and
 - (d) the complete details and dates of any action taken by the works approval holder to investigate or respond to any complaint.
- 14.** The works approval holder must maintain accurate and auditable books including the following records, information, reports, and data required by this works approval:
- (a) the works conducted in accordance with condition 1;
 - (b) any maintenance of infrastructure that is performed in the course of complying with condition 6;
 - (c) monitoring programmes undertaken in accordance with condition 9; and
 - (d) complaints received under condition 13.
- 15.** The books specified under condition 14 must:
- (a) be legible;
 - (b) if amended, be amended in such a way that the original version(s) and any subsequent amendments remain legible and are capable of retrieval;
 - (c) be retained by the works approval holder for the duration of the works approval; and,
 - (d) be available to be produced to an inspector or the CEO as required.

Definitions

In this works approval, the terms in Table 5 have the meanings defined.

Table 5: Definitions

Term	Definition
ACM	Asbestos containing material.
books	has the same meaning given to that term under the EP Act.
CEO	means Chief Executive Officer. CEO for the purposes of notification means: Director General Department administering the <i>Environmental Protection Act 1986</i> Locked Bag 10 Joondalup DC WA 6919 info@dwer.wa.gov.au
Department	means the department established under section 35 of the <i>Public Sector Management Act 1994</i> and designated as responsible for the administration of Part V Division 3 of the EP Act.
discharge	has the same meaning given to that term under the EP Act.
emission	has the same meaning given to that term under the EP Act.
Environmental Compliance Report	means a report to satisfy the CEO that the conditioned infrastructure and/or equipment has been constructed and/or installed in accordance with the works approval.
EP Act	<i>Environmental Protection Act 1986</i> (WA).
EP Regulations	<i>Environmental Protection Regulations 1987</i> (WA).
Integrated rail network	Rio Tinto's integrated railway network (IRN) comprises approximately 1,980 kilometres (km) of heavy freight railway network for the transportation of iron ore from Rio Tinto's 17 mining operations in the Pilbara to numerous port facilities for export.
premises	the premises to which this works approval applies, as specified at the front of this works approval and as shown on the premises map Figure 1 in Schedule 1 to this works approval.
prescribed premises	has the same meaning given to that term under the EP Act.
time limited operations	refers to the operation of the infrastructure and equipment identified under this works approval that is authorised for that purpose, subject to the relevant conditions.
waste	has the same meaning given to that term under the EP Act.
works approval	refers to this document, which evidences the grant of the works approval by the CEO under section 54 of the EP Act, subject to the conditions.

Term	Definition
works approval holder	refers to the occupier of the premises being the person to whom this works approval has been granted, as specified at the front of this works approval.

END OF CONDITIONS

Schedule 1: Maps

Premises map

The boundary of the prescribed premises is shown in the map below (Figure 1).

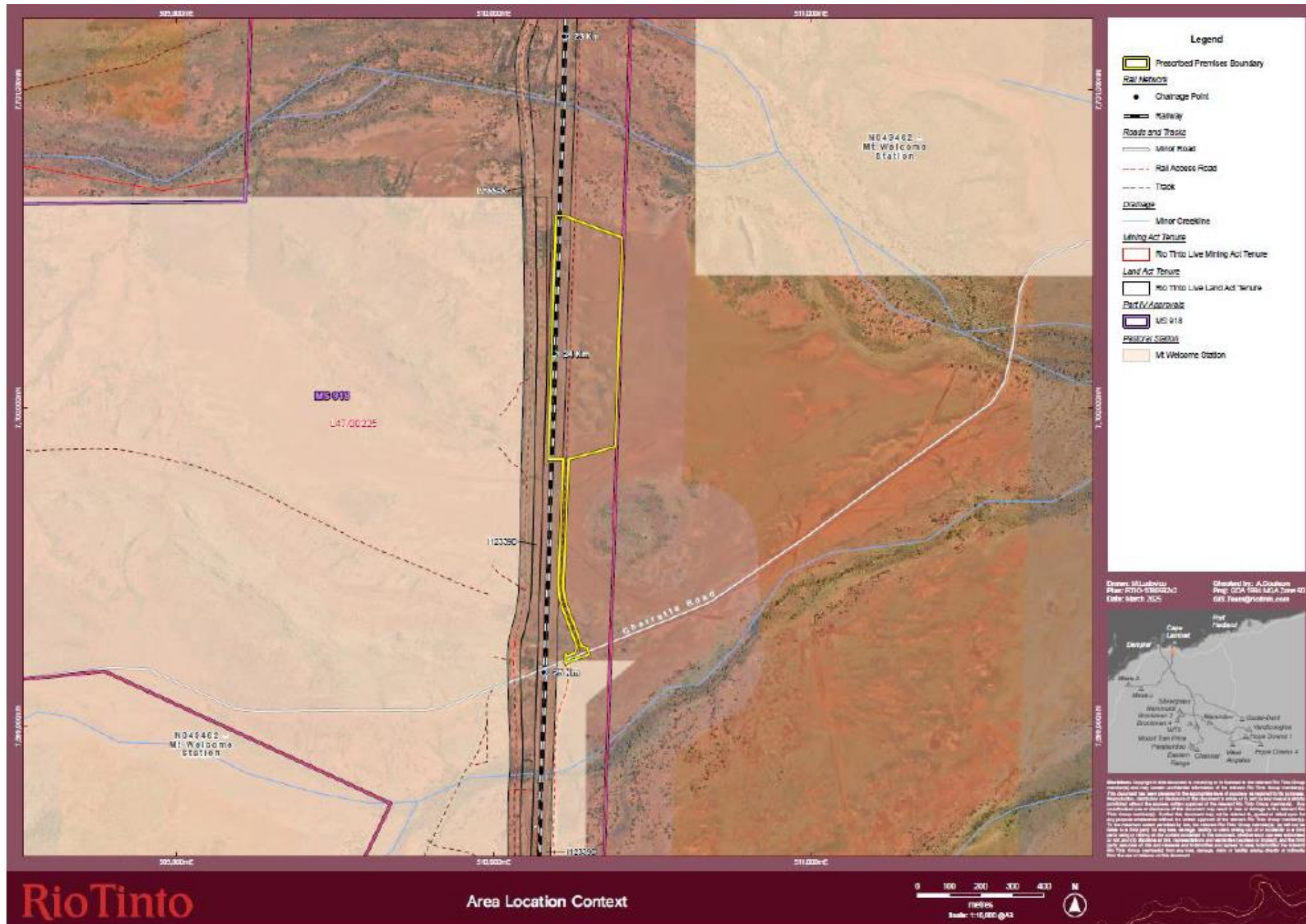


Figure 1: Map of the boundary of the prescribed premises

Premises layout map

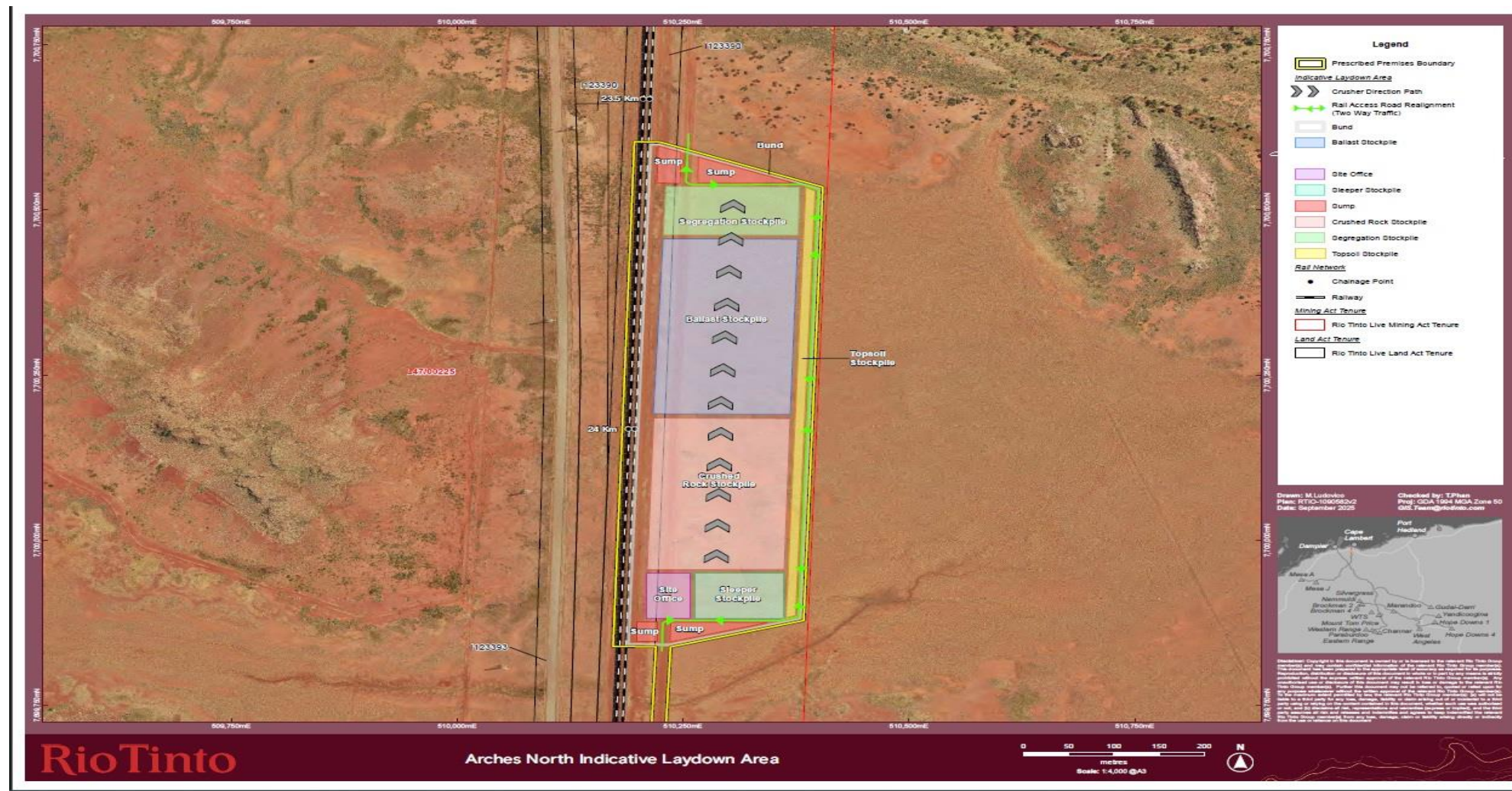


Figure 2: Premises layout map

Schedule 2: Premises boundary

The corners of the premises boundary are the coordinates listed in Table 6.

Table 6: Premises boundary coordinates (GDA 1994 MGA Zone 50)

	Easting	Northing
1.	510225.175	7700602.554
2.	510404.861	7700534.763
3.	510383.606	7699878.374
4.	510236.248	7699838.492
5.	510234.709	7699802.261
6.	510224.518	7699562.246
7.	510219.765	7699456.281
8.	510220.138	7699429.845
9.	510222.812	7699407.874
10.	510227.240	7699388.840
11.	510234.146	7699369.589
12.	510260.189	7699301.841
13.	510277.942	7699252.106
14.	510287.614	7699248.769
15.	510293.692	7699246.662
16.	510301.833	7699226.765
17.	510231.114	7699199.911
18.	510225.942	7699197.146
19.	510226.919	7699227.322
20.	510232.128	7699219.957
21.	510254.589	7699228.752
22.	510262.824	7699248.333
23.	510242.130	7699303.990
24.	510219.094	7699365.004

	Easting	Northing
25.	510212.147	7699385.784
26.	510207.725	7699403.329
27.	510206.098	7699418.396
28.	510205.234	7699429.657
29.	510204.178	7699455.620
30.	510206.119	7699514.884
31.	510210.919	7699609.079
32.	510220.055	7699838.636
33.	510172.607	7699839.057
34.	510196.212	7700603.143