



Licence number	L9112/2018/1
Licence holder	Silver Lake (Integra) Pty Limited
ACN	093 278 436
Registered business address	South Shore Plaza Suite 4 Level 3 83-85 South Perth Esplanade SOUTH PERTH WA 6151
DWER file number	INS-0002020
Duration	20/03/2018 to 19/03/2030
Date of issue	20/03/2018
Date of amendment	4/07/2025
Premises details	Aldiss Gold Project Mining Tenement M28/43, M28/208, M28/171, M28/289 Mining Lease L28/55 EMU FLAT WA 6431

Prescribed premises category description (Schedule 1, <i>Environmental Protection Regulations 1987</i>)	Assessed production / design capacity
Category 6: Mine dewatering	450,000 tonnes per annual period
Category 12: Screening etc. of material	438,000 tonnes per annual period
Category 64: Class II putrescible landfill	2,500 tonnes per annual period

This amended licence is granted to the licence holder, subject to the attached conditions, on 4 July 2025, by:

**SENIOR MANAGER, RESOURCE INDUSTRIES
INDUSTRY REGULATION (STATE-WIDE DELIVERY)**

Officer delegated under section 20 of the *Environmental Protection Act 1986*

Licence history

Date	Reference number	Summary of changes
20/03/2018	L9112/2018/1	Licence granted.
07/01/2021	L9112/2018/1	Licence amendment to authorise additional dewatering activities which include dewatering from the Tank and Atreides mining pits with discharge to lined turkey's nest and discharge of dewatering effluent (when required) to the existing Karonie and Harrys Hill mining pits.
11/07/2023	L9112/2018/1	Licence amendment to authorise the discharge of surplus mine dewater from Tank underground operation into Atreides open pit.
4/07/2025	L9112/2018/1	Licence amendment to extend the licence expiry date by 5 years.

Interpretation

In this licence:

- (a) the words 'including', 'includes' and 'include' in conditions mean "including but not limited to", and similar, as appropriate;
- (b) where any word or phrase is given a defined meaning, any other part of speech or other grammatical form of that word or phrase has a corresponding meaning;
- (c) where tables are used in a condition, each row in a table constitutes a separate condition;
- (d) any reference to an Australian or other standard, guideline, or code of practice in this licence:
 - (i) if dated, refers to that particular version; and
 - (ii) if not dated, refers to the latest version and therefore may be subject to change over time;
- (e) unless specified otherwise, any reference to a section of an Act refers to that section of the EP Act; and
- (f) unless specified otherwise, all definitions are in accordance with the EP Act.

NOTE: This licence requires specific conditions to be met but does not provide any implied authorisation for other emissions, discharges, or activities not specified in this licence.

Licence conditions

Emissions

- The Licence Holder must not cause any Emissions from the Primary Activities on the Premises except for specified Emissions and general Emissions described in Column 1 of Table 1 subject to the exclusions, limitations or requirements specified in Column 2 of Table 1.

Table 1: Authorised Emissions table

Column 1	Column 2
Emission type	Exclusions/Limitations/Requirements
Specified Emissions	
Class II waste (putrescible and inert)	To be disposed to the fenced landfill located within the Karonie East Waste Rock Dump as shown in Figure 2 in Schedule 1.
Used tyres and rubber	
Mine Dewater (discharged to salt lake)	Mine dewater from French Kiss Pit must only be discharged to the French Kiss salt playa discharge location, as depicted in Figure 2, Schedule 1; Must be discharged in a manner that avoids inundating the shoreline, with the pipeline extending at least 50m from the shoreline; and Subject to Conditions 3 to 11.
Mine Dewater (discharged to mine pits)	Mine dewater from Tank pit and Atreides pit must only be discharged to the Harrys Hill or Karonie open mine pits, as depicted in Figure 2, Schedule 1; Mine dewater from Tank underground operations must only be discharge to Atreides pit, as depicted in Figure 2, Schedule 1; Must be discharged in a manner that avoids erosion; and Subject to Conditions 2 to 5.
General Emissions (excluding Specified Emissions)	
Emissions which: <ul style="list-style-type: none"> arise from the Primary Activities set out in Schedule 2 	Emissions excluded from General Emissions are: <ul style="list-style-type: none"> Unreasonable Emissions; or Emissions that result in, or are likely to result in, Pollution, Material Environmental Harm or Serious Environmental Harm; or Discharges of Waste in circumstances likely to cause Pollution; or Emissions that result, or are likely to result in, the Discharge or abandonment of Waste in water to which the public has access; or Emissions or Discharges which do not comply with an Approved Policy; or Emissions or Discharges which do not comply with a prescribed standard; or Emissions or Discharges which do not comply with the conditions in an Implementation Agreement or Decision; or

Column 1	Column 2
Emission type	Exclusions/Limitations/Requirements
	<ul style="list-style-type: none"> Emissions or Discharges the subject of offences under regulations prescribed under the EP Act, including materials discharged under the Environmental <i>Protection (Unauthorised Discharges) Regulations 2004</i>.

Infrastructure and equipment

2. The Licence Holder must ensure that the infrastructure and equipment specified in Column 1 of Table 2 is maintained in good working order and operated in accordance with the requirements specified in Column 2 of Table 2.

Table 2: Infrastructure and equipment controls table

Column 1	Column 2
Site infrastructure and equipment	Operational requirements
Mobile jaw crusher with screen deck and sorter (design rating of 50 tonnes per hour)	<ul style="list-style-type: none"> Dust suppression system to be operational when crushing plant is in operation; and To be operated as per manufacturer's requirements
Putrescible landfill located at Karonie East Waste Rock Dump	<ul style="list-style-type: none"> Landfill trenches to be approximately 20 m x 5 m x 5 m; Maintenance of either a windrow at least 1 metre high or fence surrounding landfill; Coverage of waste in landfill trenches at least weekly; Weekly inspection to ensure correct waste is being disposed of, sufficient coverage of trenches and no windblown waste; and Recording of volumes of waste disposed
Dewatering Pipelines	<ul style="list-style-type: none"> Located within v-drains, containment bunding or buried Visual inspection of the integrity of the pipelines at least 12 hourly; Daily visual checks of the integrity of the anchors along the pipelines; and Weekly maintenance of bunds to maintain capacity
Turkeys nests	<ul style="list-style-type: none"> Maintain a freeboard of at least 300 mm; Daily visual checks of the integrity of the turkey nests and associated pipelines and standpipes; and Maintained to ensure the infrastructure is free of leaks and defects.
Mine dewater discharge pits	<ul style="list-style-type: none"> Maintain a freeboard of at least 4m below crest level.

Monitoring

3. The Licence Holder must monitor emissions in accordance with the requirements specified within Table 3 and record the results of such monitoring.

Table 3: Dewatering monitoring

Column 1	Column 2	Column 3	Column 4	Column 5
Discharge point	Monitoring location	Parameter	Unit	Frequency
French Kiss salt playa	In line dewatering pipe flowmeter	Discharge volume	kL/day	Continuous
Harrys Hill pit	End of dewatering pipe flowmeter	Discharge volume	kL/day	Continuous
Karonie pit	End of dewatering pipe flowmeter	Discharge volume	kL/day	Continuous
Atreides pit	End of dewatering pipe flowmeter	Discharge volume	kL/day	Continuous
Dewatering effluent used for dust suppression	Turkeys nest standpipes	Discharge volume	kL/day	Daily

4. The Licence Holder must monitor dewater quality, for the parameters specified in Column 1 of Table 4, at the corresponding locations specified in Column 2 of Table 4, at the corresponding frequency specified in Column 3 of Table 4, using the corresponding method specified in Column 4 of Table 4.

Table 4: Dewater Quality Monitoring Table

Column 1		Column 2	Column 3	Column 4
Parameters		Location	Frequency	Method
Water quality (physio-chemical)	EC pH ¹ Total Dissolved Solids (TDS) Total Suspended Solids (TSS)	Groundwater dewatering draw points	Annually	AS/NZS 5667.1 AS/NZS 5667.10
Water quality (Anions and Cations)	Bicarbonate (HCO ₃) Carbonate (CO ₃) Calcium (Ca) Chloride (Cl) Magnesium (Mg) Potassium (K) Sodium (Na) Sulphate (SO ₄)			

Column 1		Column 2	Column 3	Column 4
Parameters		Location	Frequency	Method
Water quality (Total Metals and Trace Elements)	Aluminium (Al) Antimony (Sb) Arsenic (As) Barium (Ba) Beryllium (Be) Boron (B) Cadmium (Cd) Chromium (Cr) Cobalt (Co) Copper (Cu) Iron (Fe) Lead (Pb) Manganese (Mn) Mercury (Hg) Molybdenum (Mo) Nickel (Ni) Selenium (Se) Silicon (Si) Thallium (Tl) Uranium (U) Vanadium (V) Zinc (Zn)			

Note 1: in field non-NATA accredited analysis permitted.

5. The Licence Holder must monitor sediment and water quality, for the parameters specified in Column 1 of Table 5, at the corresponding locations specified in Column 2 of Table 5, at the corresponding frequency specified in Column 3 of Table 5, using the corresponding method specified in Column 4 of Table 5.

Table 5: Salt Lake No.2 Sediment and Water Quality Monitoring Table

Column 1		Column 2	Column 3	Column 4
Parameters		Location	Frequency	Method
Water quality (physio-chemical)	EC pH ¹ TDS TSS	Salt Playa No. 2 discharge point; and Control Sites SC1 and SC2, as depicted in Figure 1	Annually	AS/NZS 5667.1; AS/NZS 5667.10
Water Quality (Anions and Cations)	Bicarbonate (HCO ₃) Carbonate (CO ₃) Calcium (Ca) Chloride (Cl) Magnesium (Mg) Potassium (K) Sodium (Na) Sulphate (SO ₄)			

Column 1		Column 2	Column 3	Column 4
Parameters		Location	Frequency	Method
Water Quality (Total Metals and Trace Elements)	Aluminium (Al) Antimony (Sb) Arsenic (As) Barium (Ba) Beryllium (Be) Boron (B) Cadmium (Cd) Chromium (Cr) Cobalt (Co) Copper (Cu) Iron (Fe) Lead (Pb) Manganese (Mn) Mercury (Hg) Molybdenum (Mo) Nickel (Ni) Selenium (Se) Silicon (Si) Thallium (Tl) Uranium (U) Vanadium (V) Zinc (Zn)	Salt Playa No. 2 discharge point; and Control Sites SC1 and SC2, as depicted in Figure 1	Annually	AS/NZS 5667.1; AS/NZS 5667.10
Sediment Quality	Moisture content Nitrite plus Nitrate (NO ₂ + NO ₃) Total Nitrogen Total Phosphorous Total Organic Carbon	Salt Playa No. 2 discharge point; and Control Sites SC1 and SC2, as depicted in Figure 1	Annually	AS/NZS 5667.12

Note 1: in field non-NATA accredited analysis permitted.

6. The Licence Holder must ensure that monitoring conducted in accordance with Condition 4 and Condition 5 is carried out at a sufficient level of detection to allow comparison with the marine and waters and sediment default values in the current ANZECC/ARMCANZ Guidelines.
7. The Licence Holder must ensure that all water and sediment sample analysis, conducted in accordance with Condition 4 and Condition 5 is undertaken by laboratories with current NATA accreditation for the relevant parameters, unless otherwise specified in Condition 4 and Condition 5.
8. The Licence Holder must monitor aquatic biota and algae, for the parameters specified in Column 1 of Table 6, at the corresponding locations specified in Column 2 of Table 6, at the corresponding frequency specified in Column 3 of Table 6, using the corresponding method specified in Column 4 of Table 6.

Table 6: Salt Lake No.2 Aquatic Biota and Algae Monitoring Table

Column 1		Column 2	Column 3	Column 4
Parameters		Location	Frequency	Method
Aquatic Biota	Surface Aquatic Invertebrates (diversity and abundance) ¹	Salt Playa No.2 discharge site; and Control Sites SC1 and SC2, as depicted in Figure 1	Annually	Carried out by a suitably qualified environmental scientist/ botanist ²
Algae	Benthic Microalgae Invertebrates (including resting stages) ¹		Annually	

Note 1: The specific monitored ecological components must reflect the environmental conditions of the lake at the time of sampling (i.e. whether wet or dry)

Note 2: The suitably qualified environmental scientist/botanist must be experienced in the biological sampling from salt lakes

9. The Licence Holder must monitor riparian vegetation, for the parameters specified in Column 1 of Table 7, at the corresponding locations specified in Column 2 of Table 7, at the corresponding frequency specified in Column 3 of Table 7, using the corresponding method specified in Column 4 of Table 7.

Table 7: Riparian Vegetation Monitoring Table

Column 1		Column 2	Column 3	Column 4
Parameters		Location	Frequency	Method
Riparian Vegetation	Level 1 vegetation survey/targeted repeat comparison surveys ¹	Salt Playa No.2 Shoreline ¹ ; and	Annually ²	Reviewed by a suitably qualified environmental scientist/ botanist ³
	Photo point monitoring/ Riparian vegetation health assessment (rapid assessment method) ¹	Control Sites VMC and SVMC, as depicted in Figure 1	6 monthly ²	

Note 1: Riparian vegetation is to be monitored at the shoreline nearest to the discharge point where riparian vegetation is found

Note 2: Initial survey to be undertaken prior to discharge

Note 3: The suitably qualified environmental scientist/botanist must have experience in the identification of flora of the Coolgardie bioregion

Reportable Events

10. The Licence Holder must ensure that any discharges of hypersaline water from pipeline leakage or breach are notified to DWER within one business day.

Premises Operation

11. The Licence Holder must only dispose waste on to the Premises if:
- it is of a type listed in Table 8;
 - it meets any specification listed in Table 8; and
 - in the case of contaminated solid waste, is supported by documentation that demonstrates compliance with the acceptance criteria for Class II landfills.

Table 8: Waste acceptance

Column 1	Column 2	Column 3
Waste ¹	Quantity Limit	Specification ²
Clean fill	As specified in Schedule 2	None specified
Contaminated solid waste		Must meet the acceptance criteria for Class II landfills
Inert waste Type 1		Waste containing visible asbestos or ACM shall not be accepted.
Inert waste Type 2		Tyres, plastic, scrap metal and vehicles only
Putrescible waste		None specified

Note 1: Waste types defined in the *Landfill Waste Classification and Waste Definitions 1996 (as amended December 2019)*

Note 2: Additional requirements for the acceptance of controlled waste (including asbestos and tyres) are set out in the *Environmental Protection (Controlled Waste) Regulations 2004*.

12. The Licence Holder must take all reasonable and practical measures to ensure that no windblown waste escapes from the Premises and that windblown waste is collected on at least a weekly basis and returned to the tipping area.
13. The Licence Holder must implement control measures to prevent infestations of pests and vermin at the Premises.

Record-keeping

14. The Licence Holder must maintain accurate and auditable Books including the following records, information, reports and data required by this Licence:
 - (a) the calculation of fees payable in respect of this Licence;
 - (b) the maintenance of infrastructure required to ensure that it is kept in good working order in accordance with Condition 2 of this Licence; and
 - (c) complaints received under Condition 15 of this Licence.
 In addition, the Books must:
 - (d) be legible;
 - (e) if amended, be amended in such a way that the original and subsequent amendments remain legible and are capable of retrieval;
 - (f) be retained for at least 3 years from the date the Books were made; and
 - (g) be available to be produced to an Inspector or the CEO.
15. The Licence Holder must record the number and details of any complaints received by the Licence Holder relating to its obligations under this Licence and its compliance with Part V of the EP Act at the Premises, and any action taken by the Licence Holder in response to the complaint. Details of complaints must include:
 - (a) an accurate record of the concerns or issues raised, for example a copy of any written complaint or a written note of any verbal complaints made;
 - (b) the name and contact details of the complainant, if provided by the complainant;
 - (c) the date of the complaint; and
 - (d) the details and dates of the actions taken by the Licence Holder in response to the complaints.

Department of Water and Environmental Regulation

- 16.** The Licence Holder must:
- (a) Undertake an audit of their compliance with the conditions of this licence during the preceding annual period; and
 - (b) Prepare and submit to the CEO by no later than 31 March in each year, an Annual Audit Compliance Report in the approved form.
- 17.** The Licence Holder must submit to the CEO, no later than 31 March in each year, an Annual Environment Report for that annual period for the conditions listed in Table 9, and which provide information in accordance with the corresponding requirement set out in Table 9.

Table 9: Annual Environment Report

Column 1	Column 2
Condition	Requirement
3	Dewatered groundwater discharge volumes ¹
4	Dewatered groundwater water quality ¹
5	Receiving environment water quality ¹
8	Biota and algae monitoring ¹
9	Assessment of riparian vegetation health compared to baseline vegetation survey (pre dewatering discharge) ¹

Note 1: For reports completed in subsequent years, current monitoring results shall be compared to previous monitoring and baseline data.

- 18.** The Licence Holder must comply with a Department Request, within 14 days from the date of the Department Request or such other period as agreed to by the Inspector or the CEO.

Definitions

In this licence, the terms in Table 10 have the meanings defined.

Table 10: Definitions

Term	Definition
ACN	Australian Company Number
Annual Audit Compliance Report (AACR)	means a report submitted in a format approved by the CEO (relevant guidelines and templates may be available on the Department's website).
annual period	means a 12 month period commencing from 1 January until 31 December in each year.
Approved form	the AACR Form template approved by the CEO for use and available via DWER's external website
ANZECC/ARMCANZ Guidelines	Means the current version of the <i>Australian & New Zealand Guidelines for Fresh & Marine Water Quality</i> , Australian and New Zealand Environment and Conservation Council (ANZECC) & Agriculture and Resource Management Council of Australia and New Zealand (ARMCANZ)
AS/NZS 5667.1	means the Australian Standard AS/NZS 5667.1 <i>Water Quality – Sampling Guidance of the Design of sampling programs, sampling techniques and the preservation and handling of samples</i>
AS/NZS 5667.10	means the Australian Standard AS/NZS 5667.1 <i>Water Quality – Sampling Guidance on sampling of waste waters</i>
AS/NZS 5667.12	means the Australian Standard AS/NZS 5667.1 <i>Water Quality – Sampling Guidance on sampling of bottom sediments</i>
books	has the same meaning given to that term under the EP Act.
CEO	means Chief Executive Officer of the Department. “submit to / notify the CEO” (or similar), means either: Director General Department administering the <i>Environmental Protection Act 1986</i> Locked Bag 10 Joondalup DC WA 6919 or: info@dwer.wa.gov.au
Class II Landfill	As defined in the Landfill Definitions
Condition	means a condition to which this Licence is subject under s.62 of the EP Act.
Department	means the department established under section 35 of the <i>Public Sector Management Act 1994</i> (WA) and designated as responsible for the administration of the EP Act, which includes Part V Division 3.

Department of Water and Environmental Regulation

Term	Definition
Department Request	means a request for Books or other sources of information to be produced, made by an Inspector or the CEO to the Licence Holder in writing and sent to the Licence Holder's address for notifications, as described at the front of this Licence, in relation to: <ul style="list-style-type: none"> (a) compliance with the EP Act or this Licence; (b) the Books or other sources of information maintained in accordance with this Licence; or (c) the Books or other sources of information relating to Emissions from the Premises.
discharge	has the same meaning given to that term under the EP Act.
DWER	Department of Water and Environmental Regulation.
emission	has the same meaning given to that term under the EP Act.
Environmental Harm	has the same meaning given to that term under the EP Act.
EP Act	<i>Environmental Protection Act 1986 (WA)</i>
EP Regulations	<i>Environmental Protection Regulations 1987 (WA)</i>
Freeboard	means the distance between the maximum water surface elevations and the top of retaining banks or structures at their lowest point
Implementation Agreement or Decision	has the same meaning given to that term under the EP Act.
Inspector	means an inspector appointed by the CEO in accordance with s.88 of the EP Act.
Landfill Definitions	Means the document " <i>Landfill Waste Classification and Waste Definitions 1996, as amended from time to time</i> "
licence	refers to this document, which evidences the grant of a licence by the CEO under section 57 of the EP Act, subject to the specified conditions contained within.
licence holder	refers to the occupier of the premises, being the person specified on the front of the licence as the person to whom this licence has been granted.
Material Environmental Harm	has the same meaning given to that term under the EP Act
Pollution	has the same meaning given to that term under the EP Act.
premises	refers to the premises to which this Licence applies, as specified at the front of this Licence and as shown on the map in Schedule 1 to this Licence.
prescribed premises	has the same meaning given to that term under the EP Act.

Department of Water and Environmental Regulation

Term	Definition
Primary Activities	refers to the Prescribed Premises activities listed on the front of this Licence as described in Schedule 2, at the locations shown in Schedule 1.
Serious Environmental Harm	has the same meaning given to that term under the EP Act.
Suitably qualified environmental scientist/botanist	means a person who: (a) holds a relevant tertiary academic qualification; and (b) has a minimum of at least three years experience in the biological sampling from salt lakes and/or in the identification of flora within the Coolgardie bioregion.
TDS	Total Dissolved Solids
TSS	Total Suspended Solids
Unreasonable Emission	has the same meaning given to that term under the EP Act.
waste	has the same meaning given to that term under the EP Act.

END OF CONDITION

Schedule 1: Maps

Premises map

The Premises map with salt playa dewatering discharge points and control monitoring sites are shown below. Premises boundary is shown in green.

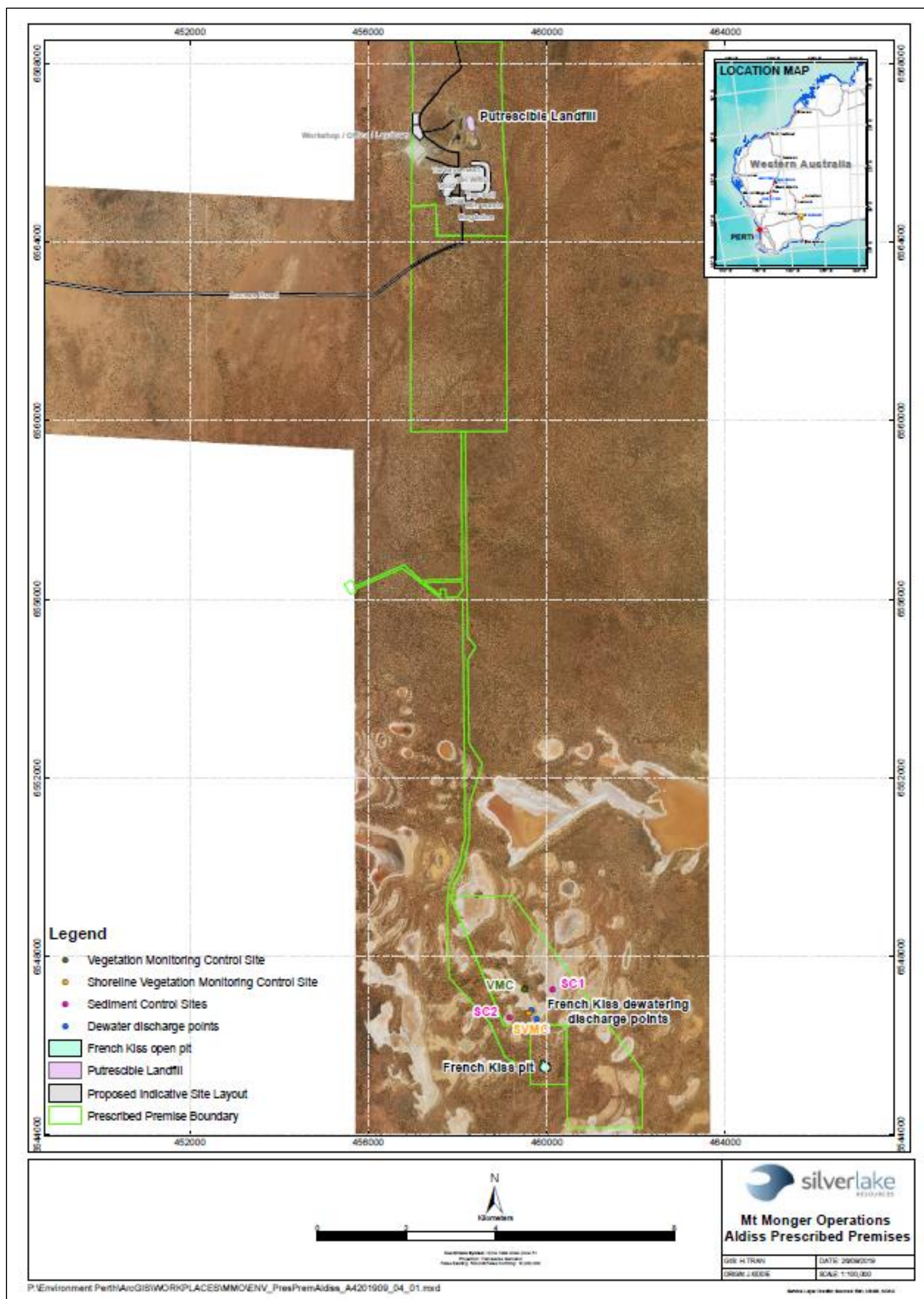


Figure 1: Prescribe premises boundary (as depicted by green line)

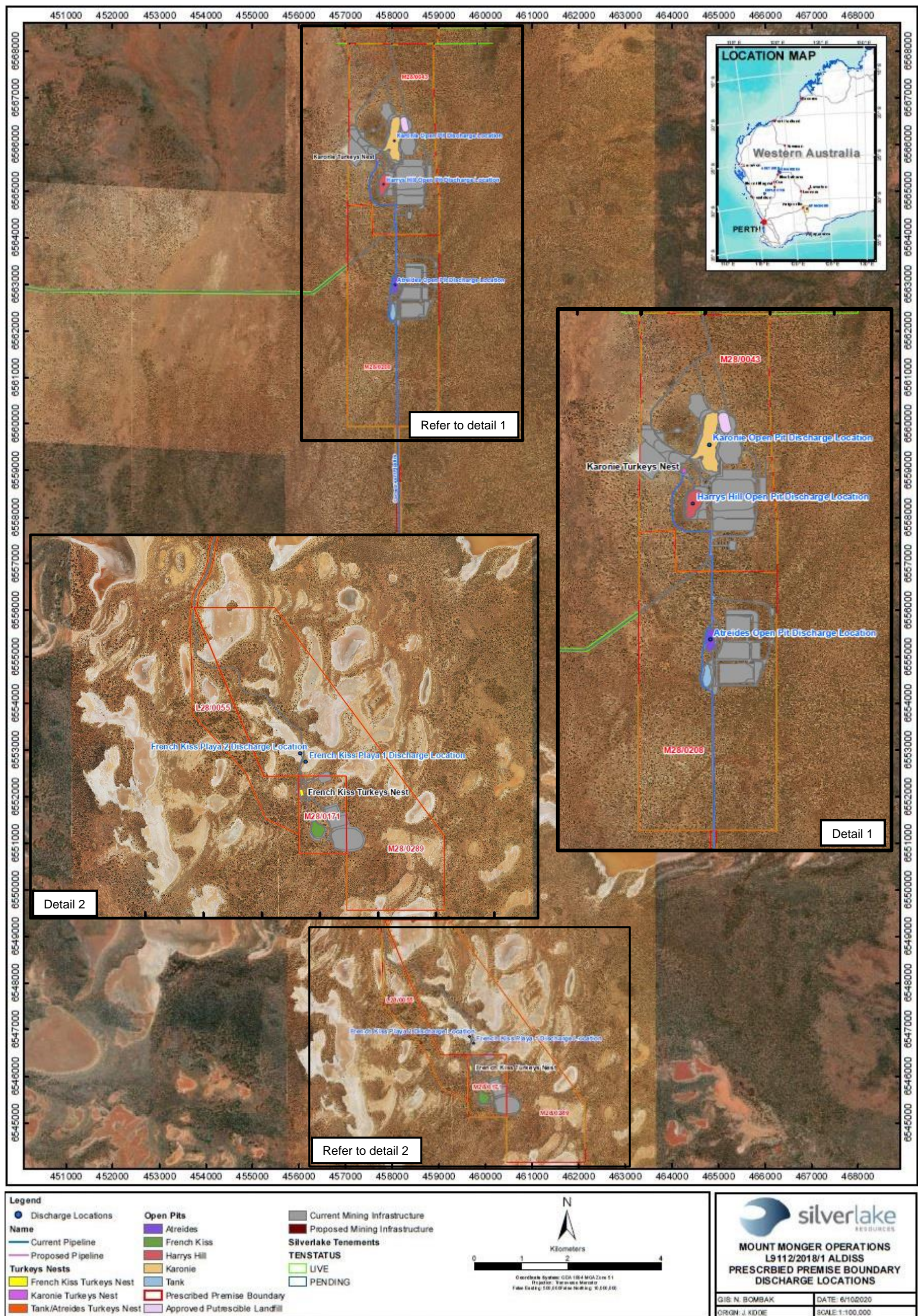


Figure 2: Location of salt playa and mine pit dewatering discharge points