



Works approval number	W2890/2025/1
Works approval holder	Viva Energy Australia Pty Ltd
ACN	004 610 459
Registered business address	Level 16, 720 Bourke Street DOCKLANDS VIC 3008
Instrument number	INS-0002890 and APP-0026220
Duration	04/07/2025 to 03/07/2028
Date of issue	04/07/2025
Premises details	Viva Energy, Karratha Coolawanyah Road KARRATHA INDUSTRIAL ESTATE WA 6714 Legal description Lot 1 on Deposited Plan 71469 As defined by the premises map attached to the issued works approval

Prescribed premises category description (Schedule 1, <i>Environmental Protection Regulations 1987</i>)	Assessed design capacity
Category 73: Bulk storage of chemicals etc.	2,000 m ³

This works approval is granted to the works approval holder, subject to the attached conditions, on 4 July 2025, by:

Amine Fisher

MANAGER, PROCESS INDUSTRIES

an officer delegated under section 20 of the *Environmental Protection Act 1986* (WA)

Works approval history

Date	Reference number	Summary of changes
04/07/2025	W2890/2025/1	Works approval granted.

Interpretation

In this works approval:

- (a) the words ‘including’, ‘includes’ and ‘include’ in conditions mean “including but not limited to”, and similar, as appropriate;
- (b) where any word or phrase is given a defined meaning, any other part of speech or other grammatical form of that word or phrase has a corresponding meaning;
- (c) where tables are used in a condition, each row in a table constitutes a separate condition;
- (d) any reference to an Australian or other standard, guideline, or code of practice in this works approval:
 - (i) if dated, refers to that particular version; and
 - (ii) if not dated, refers to the latest version and therefore may be subject to change over time;
- (e) unless specified otherwise, any reference to a section of an Act refers to that section of the EP Act; and
- (f) unless specified otherwise, all definitions are in accordance with the EP Act.

NOTE: This works approval requires specific conditions to be met but does not provide any implied authorisation for other emissions, discharges, or activities not specified in this works approval.

Works approval conditions

The works approval holder must ensure that the following conditions are complied with:

Construction phase

Infrastructure and equipment

1. The works approval holder must:
 - (a) construct or install the infrastructure and equipment;
 - (b) in accordance with the corresponding design and construction / installation requirements; and
 - (c) at the corresponding infrastructure location;
 as set out in Table 1.

Table 1: Design and construction / installation requirements

	Infrastructure	Design and construction / installation requirements	Infrastructure location
1.	Loading gantry	a) The loading gantry must be installed within a bunded concrete containment area in accordance with requirements in AS 1940. b) The concrete containment bund must be graded to drain towards a collection sump. c) The gantry must be fitted with “dry break” couplings. d) An overhead canopy must be installed to cover the gantry bay.	Loading Gantry in Figure 2 Schedule 1
2.	10 x 200 kL lube oil storage tanks 4 x 100 kL lube oil storage tanks	a) All tanks must be installed within a concrete containment bund that is designed and constructed to meet the requirement in AS 1940. b) The concrete containment bund must be fitted with an isolation valve c) The concrete containment bund must be graded to drain towards a collection sump. d) All tanks must be fully enclosed and fitted with an overfill alarm and a leak detection system.	TK1 to 14 in Figure 2 Schedule 1
3.	Oily water treatment system	a) Must install a two chambered Atlan Spillceptor with submersible pumps b) Must be connected via drainage pipelines to receive stormwater from the lube oil tank bund, loading gantry bund, waste skip bin storage area bund and flexi-tank storage area bund as set out in Figure 3 Schedule 1.	Oily water treatment in Figure 2 Schedule 1 and Oily water pipelines in Figure 3 Schedule 1
4.	Waste skip bin storage area	a) Must comprise a bunded concrete containment area graded to drain towards a collection sump.	Waste skip area in Figure 2 Schedule 1

	Infrastructure	Design and construction / installation requirements	Infrastructure location
5.	Flexi-tank storage area	a) Must comprise a bunded concrete containment area graded to drain towards a collection sump.	Flexi-tanks in Figure 2 Schedule 1

Compliance reporting

2. The works approval holder must within 30 calendar days of the items of infrastructure or equipment required by condition 1 being constructed or installed:
 - (a) undertake an audit of their compliance with the requirements of condition ; and
 - (b) prepare and submit to the CEO an Environmental Compliance Report on that compliance.
3. The Environmental Compliance Report required by condition 2, must include as a minimum the following:
 - (a) certification by a qualified professional engineer that the items of infrastructure or component(s) thereof, as specified in condition 1, have been constructed in accordance with the relevant requirements specified in condition 1;
 - (b) as constructed plans and a detailed site plan for each item of infrastructure or component of infrastructure specified in condition 1; and
 - (c) be signed by a person authorised to represent the works approval holder and contains the printed name and position of that person.

Records and reporting (general)

4. The works approval holder must record the following information in relation to complaints received by the works approval holder (whether received directly from a complainant or forwarded to them by the Department or another party) about any alleged emissions from the premises:
 - (a) the name and contact details of the complainant, (if provided);
 - (b) the time and date of the complaint;
 - (c) the complete details of the complaint and any other concerns or other issues raised; and
 - (d) the complete details and dates of any action taken by the works approval holder to investigate or respond to any complaint.
5. The works approval holder must maintain accurate and auditable books including the following records, information, reports, and data required by this works approval:
 - (a) the works conducted in accordance with condition 1;
 - (b) any maintenance of infrastructure that is performed in the course of complying with condition 1; and
 - (c) complaints received under condition 4.
6. The books specified under condition 5 must:
 - (a) be legible;

- (b) if amended, be amended in such a way that the original version(s) and any subsequent amendments remain legible and are capable of retrieval;
- (c) be retained by the works approval holder for the duration of the works approval; and
- (d) be available to be produced to an inspector or the CEO as required.

Definitions

In this works approval, the terms in Table 2 have the meanings defined.

Table 2: Definitions

Term	Definition
AS 1940	means Australian Standard AS 1940: <i>The storage and handling of flammable and combustible liquids</i>
books	has the same meaning given to that term under the EP Act.
CEO	means Chief Executive Officer. CEO for the purposes of notification means: Director General Department administering the <i>Environmental Protection Act 1986</i> Locked Bag 10 Joondalup DC WA 6919 info@dwer.wa.gov.au
Department	means the department established under section 35 of the <i>Public Sector Management Act 1994</i> and designated as responsible for the administration of Part V Division 3 of the EP Act.
Environmental Compliance Report	means a report to satisfy the CEO that the conditioned infrastructure and/or equipment has been constructed and/or installed in accordance with the works approval.
EP Act	<i>Environmental Protection Act 1986</i> (WA).
premises	the premises to which this licence applies, as specified at the front of this licence and as shown on the premises map (Figure 1) in Schedule 1 to this works approval.
qualified professional engineer	means a person who holds a tertiary academic qualification in engineering and a minimum of three years experience working in the area of civil/construction engineering
works approval	refers to this document, which evidences the grant of the works approval by the CEO under section 54 of the EP Act, subject to the conditions.
works approval holder	refers to the occupier of the premises being the person to whom this works approval has been granted, as specified at the front of this works approval.

END OF CONDITIONS

Schedule 1: Maps

Premises map

The boundary of the prescribed premises is shown in the map below (Figure 1



Figure 1).



Figure 1: Map of the boundary of the prescribed premises

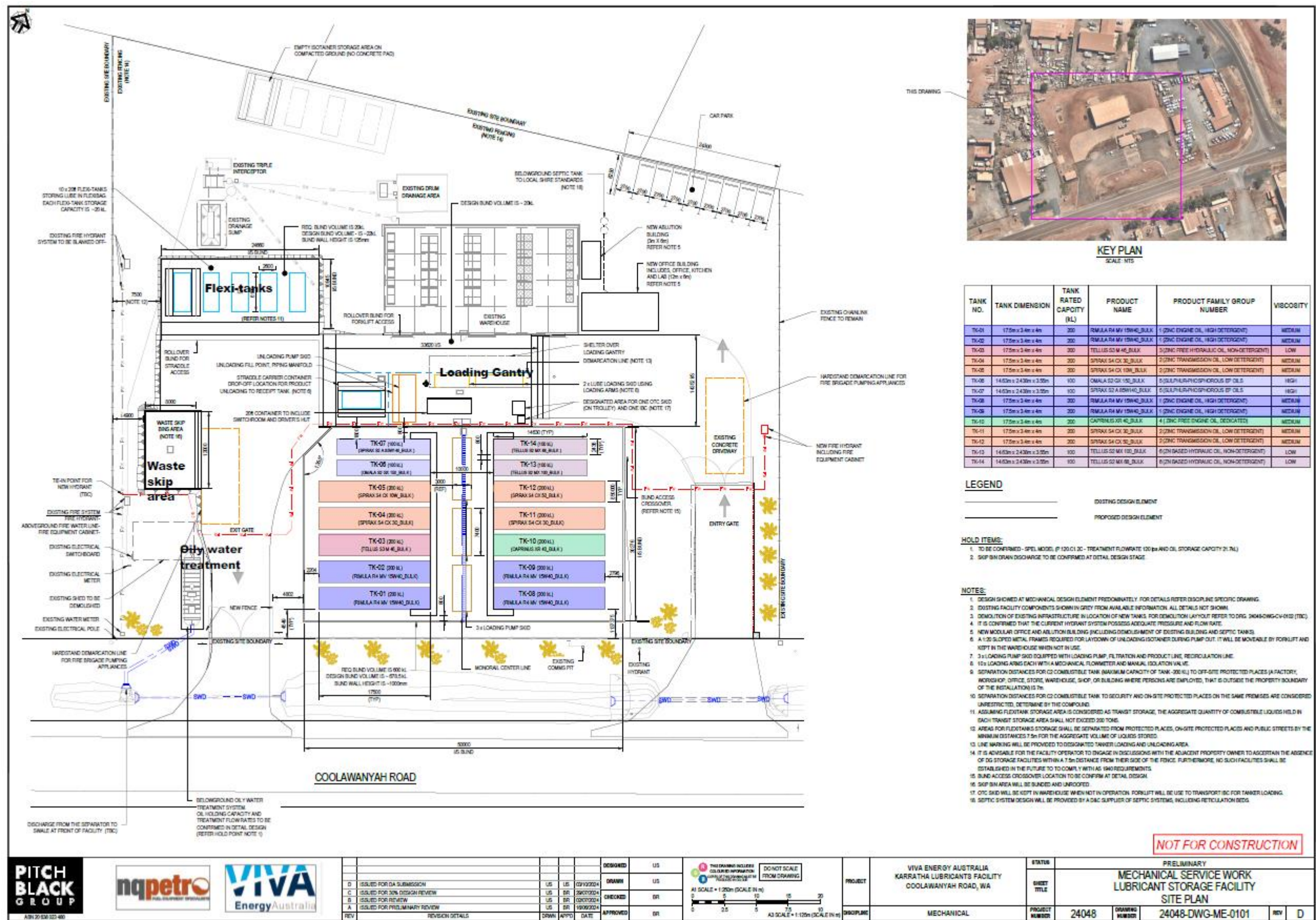


Figure 2: Proposed premises layout

W2890/2025/1 (Date of works approval issue 4 July 2025)

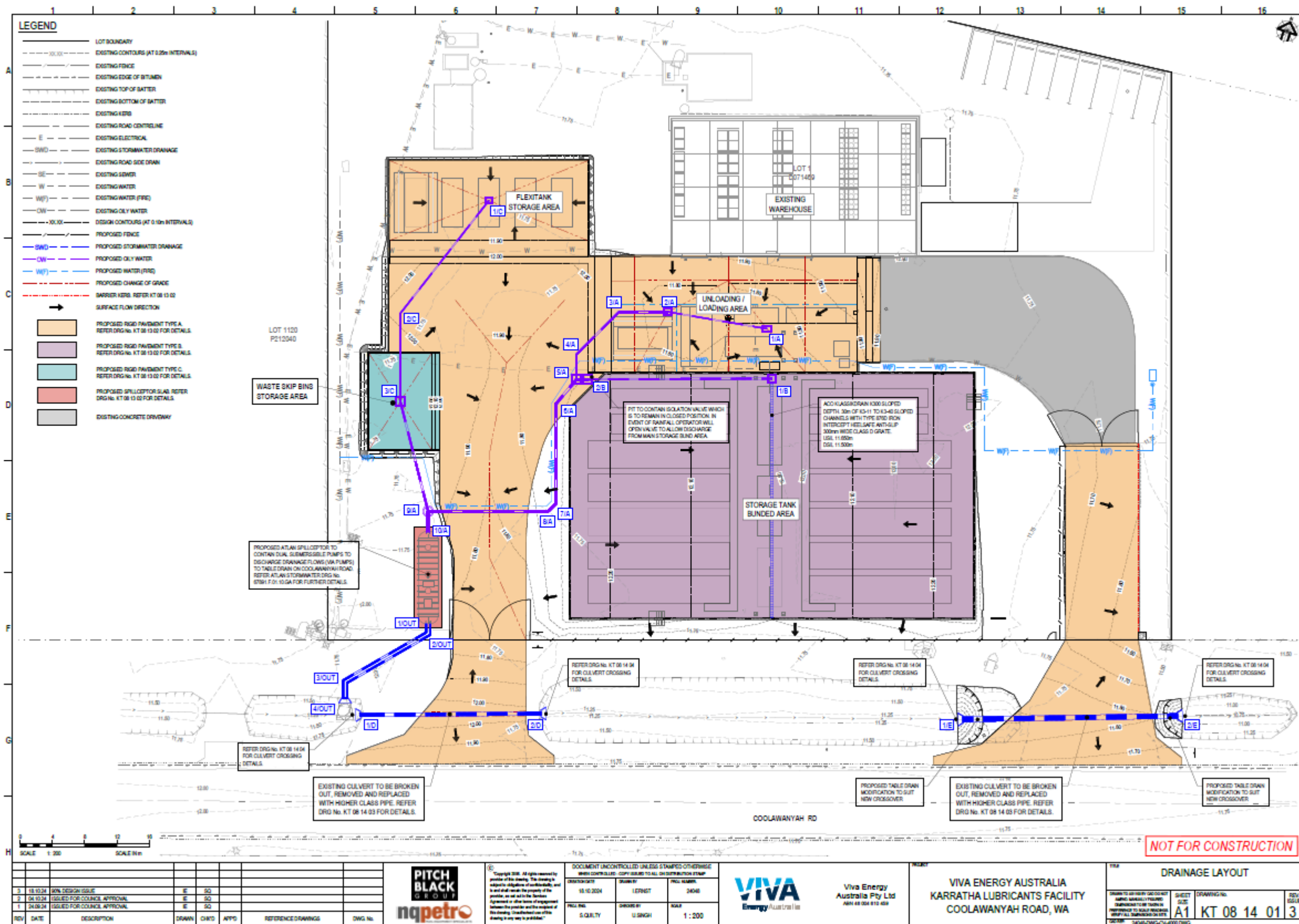


Figure 3: Proposed drainage layout

W2890/2025/1 (Date of works approval issue 4 July 2025)