



Works approval number	W6817/2023/1
DWER File Number	DER2023/000424 and INS-0002671
Works approval holder	Cockburn Cement Limited
ACN	008 673 470
Registered business address	Level 1, 157 Grenfell Street Adelaide SA 5000
DWER file number	DER2023/000424
Duration	07/11/2023 to 06/11/2025
Date of amendment	9 June 2025
Premises details	Cockburn Cement Limited Munster Being Lot 450 on Plan 249735 Rockingham Rd, Lot 50 on Diagram 6065, Lot 88 on Plan 22127, Lot 246 on Plan 226117, Lot 5 and Lot 4 on Diagram 18525 and Lot 311 on Plan 300770 Russell Road, MUNSTER 6166

Prescribed premises category description (Schedule 1, <i>Environmental Protection Regulations 1987</i>)
--

Category 43: Cement or lime manufacturing

Assessed activities directly related to the above categories

Installation and operation of lime kiln dust prilling infrastructure
--

This amended works approval is granted to the works approval holder, subject to the attached conditions, on 9 June 2025 by:

Amine Fisher

Manager, Process Industries

an officer delegated under section 20 of the *Environmental Protection Act 1986* (WA)

Works approval history

Date	Reference number	Summary of changes
07/11/2023	W6817/2023/1	Works approval authorising installation and time limited operations of the LKD prilling infrastructure.
14/08/2024	W6817/2023/1	Works approval amended to extend time limited operations.
9/06/2025	W6817/2023/1	Works approval amended to extend time limited operations to align with instrument expiry.

Interpretation

In this works approval:

- (a) the words ‘including’, ‘includes’ and ‘include’ in conditions mean “including but not limited to”, and similar, as appropriate;
- (b) where any word or phrase is given a defined meaning, any other part of speech or other grammatical form of that word or phrase has a corresponding meaning;
- (c) where tables are used in a condition, each row in a table constitutes a separate condition;
- (d) any reference to an Australian or other standard, guideline, or code of practice in this works approval:
 - (i) if dated, refers to that particular version; and
 - (ii) if not dated, refers to the latest version and therefore may be subject to change over time;
- (e) unless specified otherwise, any reference to a section of an Act refers to that section of the EP Act; and
- (f) unless specified otherwise, all definitions are in accordance with the EP Act.

NOTE: This works approval requires specific conditions to be met but does not provide any implied authorisation for other emissions, discharges, or activities not specified in this works approval.

Works approval conditions

The works approval holder must ensure that the following conditions are complied with:

Construction phase

Infrastructure and equipment

1. The works approval holder must construct and/or install the infrastructure and/or equipment;
 - (a) in accordance with the corresponding design and construction / installation requirements; and
 - (b) at the corresponding infrastructure location;as set out in Table 1.

Table 1: Design and construction / installation requirements

	Infrastructure/ Equipment	Design and construction / installation requirements	Infrastructure location
1.	LKD prilling infrastructure comprising: <ul style="list-style-type: none">– Feed screw– Weigh screw– Transfer chutes– Dustfix 80 dust conditioner (LKD prilling machine)	<ol style="list-style-type: none">a) Must comprise a fully enclosed system for the transfer and prilling of LKD.b) Must have a design capacity of not more than 80m³ per hour.c) The LKD prilling machine must be fitted with a moisture sensor that is capable of continuously measuring the moisture content of prilled LKD.	As shown in Schedule 1: Figure 1 - LKD Prilling infrastructure location
2.	Dust extraction system and baghouse	<ol style="list-style-type: none">a) Must have a design capacity of not less than 6000 m³/hourb) Baghouse must be installed with not less than 14 filter bags with a total filter area of at least 28 m².c) Baghouse must have a pulse jet air cleaning system and an enclosed chute or pipe which returns collected dust to the prilling feed screw.	As shown in Schedule 1 Figure 1 - LKD Prilling infrastructure location
3.	Prilled LKD truck loading infrastructure	<ol style="list-style-type: none">a) An automatic roller door must be installed at the northern end of the existing LKD loading area.b) The outlet of the prilling machine must be fitted with an enclosed loading chute.c) The loading chute must be fitted with a telescopic loading sock that is of a sufficient length to reach inside trucks which will be loaded with prilled LKD.d) The loading infrastructure must be connected to the dust extraction system and baghouse via an enclosed chute or pipe.	As shown in Schedule 1 Figure 1 - LKD Prilling infrastructure location

Compliance reporting

2. The works approval holder must within 30 calendar days of the infrastructure specified in by condition 1 being constructed and/or installed:
 - (a) undertake an audit of their compliance with the requirements of condition 1; and
 - (b) prepare and submit to the CEO an Environmental Compliance Report on that compliance.

3. The Environmental Compliance Report required by condition 2, must include as a minimum:
 - (a) Certification by the works approval holder that the infrastructure, as specified in condition 1, have been constructed in accordance with the relevant requirements specified in condition 1;
 - (b) as constructed plans the infrastructure or component of infrastructure specified in condition 1; and
 - (c) be signed by a person authorised to represent the works approval holder and contains the printed name and position of that person.

Time limited operations phase

Commencement and duration

4. The works approval holder may only commence time limited operations for the infrastructure identified in condition 1 where the Environmental Compliance Report as required by condition 2 has been submitted by the works approval holder for that infrastructure.
5. The works approval holder may conduct time limited operations for the infrastructure specified in Table 1 (as applicable):
 - (a) from the day the works approval holder meets the requirements of condition 4 for that item of infrastructure until 6 November 2025; or
 - (b) until such time as a licence for that item of infrastructure is granted in accordance with Part V of the *Environmental Protection Act 1986*
 whichever occurs first.
6. The works approval holder must ensure that the site infrastructure and equipment listed in Table 2 and located at the corresponding infrastructure location is maintained and operated in accordance with the corresponding operational requirement set out in Table 2.

Table 2: Operational requirements during time limited operations

	Site infrastructure and equipment	Operational requirement	Infrastructure location
1.	LKD prilling infrastructure	a) The moisture content of prilled LKD must be continuously monitored. b) The prilled LKD must meet a moisture content of 12% or higher or where the moisture content is less than 12%, the prilled LKD must be free of dust when exiting the LKD prilling machine.	LKD Prilling machine as shown in Figure 2 in Schedule 1
2.	Prilled LKD truck loading infrastructure	a) Loading of prilled LKD into tipper trucks must be undertaken via a telescopic loading sock which reaches into the truck. b) A street sweeper must be used as required to prevent dust accumulation within the loading area.	Prilled LKD loading sock as shown in Figure 2 in Schedule 1
3.	Dust extraction system and baghouse	a) Must be in operation whenever prilled LKD is being loaded via the loading chute/sock. b) Must discharge collected particulate matter back into the prilling feed via an enclosed chute or pipe. c) Broken or faulty baghouse filters must be maintained, repaired or replaced when detected.	New dust extraction baghouse as shown in Figure 2 in Schedule 1

	Site infrastructure and equipment	Operational requirement	Infrastructure location
4.	Tipper trucks	a) Prilled LKD must be transported via tipper trucks to the LKD disposal area for disposal. b) Prilled LKD must be in a damp state when being transported by tipper trucks. c) Trucks trailers must be covered when transporting prilled LKD.	NA
5.	Water cart	a) If there is any visible dust lift off during the deposition of prilled LKD a water cart must be operated to control dust lift off.	LKD disposal area as shown in Figure 1 in Schedule 1

Emissions

7. During time limited operations, the works approval holder must ensure that the emissions specified in Table 3, are emitted only from the corresponding emission points and only at the corresponding emission point locations.

Table 3: Authorised discharge points during time limited operations

Emission	Emission point	Emission point location (as shown in Schedule 1: Figure 2)
PM	LKD prilling baghouse	New dust extraction baghouse

Time limited operations reporting

8. The works approval holder must submit to the CEO a report on the time limited operations within 60 calendar days of the completion date of time limited operations or 60 calendar days before the expiration date of the works approval, whichever is the sooner.
9. The works approval holder must ensure the report required by condition 8 includes the following:
- (a) a summary of the time limited operations, including timeframes;
 - (b) a summary of the environmental performance of all infrastructure as constructed or installed (as applicable); and
 - (c) where the manufacturer's design specifications and the conditions of this works approval have not been met, what measures will the works approval holder take to meet them, and what timeframes will be required to implement those measures.

Records and reporting (general)

10. The works approval holder must record the following information in relation to complaints received by the works approval holder (whether received directly from a complainant or forwarded to them by the Department or another party) about any alleged emissions from the premises:
- (a) the name and contact details of the complainant, (if provided);
 - (b) the time and date of the complaint;
 - (c) the complete details of the complaint and any other concerns or other issues raised; and
 - (d) the complete details and dates of any action taken by the works approval holder to investigate or respond to any complaint.

- 11.** The works approval holder must maintain accurate and auditable books including the following records, information, reports, and data required by this works approval:
- (a) the works conducted in accordance with condition 1;
 - (b) any maintenance of infrastructure that is performed to comply with condition 1;
and
 - (c) complaints received under condition 10.
- 12.** The books specified under condition 11 must:
- (a) be legible;
 - (b) if amended, be amended in such a way that the original version(s) and any subsequent amendments remain legible and are capable of retrieval;
 - (c) be retained by the works approval holder for the duration of the works approval;
and
 - (d) be available to be produced to an inspector or the CEO as required.

Definitions

In this works approval, the terms in Table 4 have the meanings defined.

Table 4: Definitions

Term	Definition
CEO	means Chief Executive Officer. CEO for the purposes of notification means: Director General Department administering the <i>Environmental Protection Act 1986</i> Locked Bag 10 Joondalup DC WA 6919 info@dwer.wa.gov.au
Damp state	Moist to touch
Department	means the department established under section 35 of the <i>Public Sector Management Act 1994</i> and designated as responsible for the administration of Part V Division 3 of the EP Act.
Environmental Compliance Report	means a report to satisfy the CEO that the conditioned infrastructure and/or equipment has been constructed and/or installed in accordance with the works approval.
LKD	Lime Kiln Dust – Dust captured by kiln baghouses
PM	Particulate matter
premises	the premises to which this works approval applies, as specified at the front of this works approval.
prescribed premises	has the same meaning given to that term under the EP Act.
prilled LKD	Spherical granules of lime kiln dust produced by the LKD prilling machine
time limited operations	refers to the operation of the infrastructure and equipment identified under this works approval that is authorised for that purpose, subject to the relevant conditions.
works approval	refers to this document, which evidences the grant of the works approval by the CEO under section 54 of the EP Act, subject to the conditions.
works approval holder	refers to the occupier of the premises being the person to whom this works approval has been granted, as specified at the front of this works approval.

Schedule 1: Maps

Premises map

The boundary of the prescribed premises is depicted by the pink line in the map below (Figure 1).



Figure 1: Premises boundary and location of infrastructure and LKD disposal area

Infrastructure layout

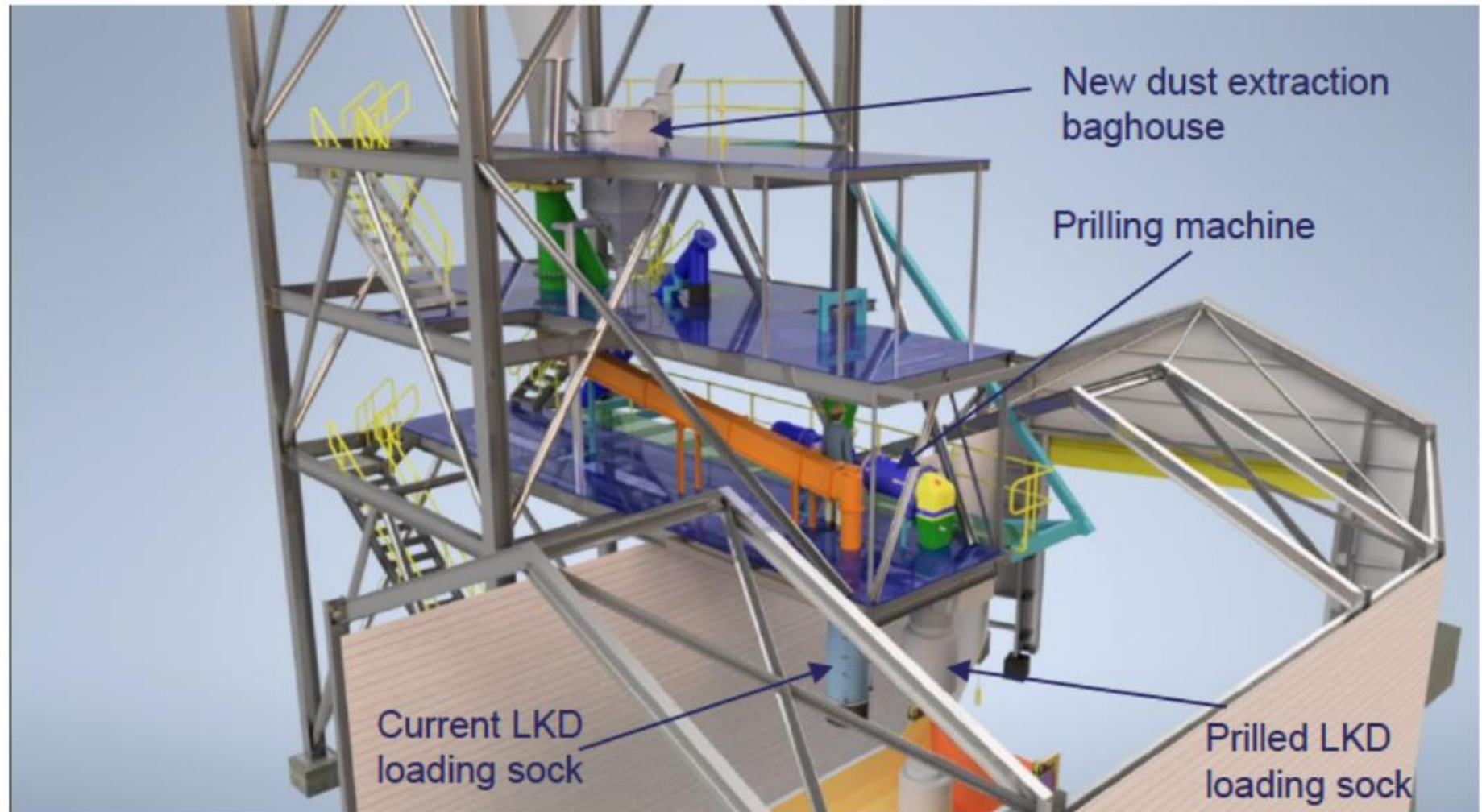


Figure 2: Layout of prilling machine and associated infrastructure (east view)