



# Works Approval

**Works approval number** W2945/2025/1

**Works approval holder** Zeus Mining Pty Ltd

**ACN** 113 854 596

**Registered business address** Suite 8, Level 2, 5 Ord Street  
WEST PERTH 6005

**DWER file number** INS-0002945

**Duration** 4/06/2025 to 3/06/2028

**Date of issue** 04/06/2025

**Premises details** Garden Gulley Project

Legal description:  
Mining tenements M51/886 and Part of M51/889,  
L51/138 and L51/139

MEEKATHARRA WA 6642

As defined by the premises maps attached to the  
issued works approval

Prescribed premises category description (Schedule 1, <i>Environmental Protection Regulations 1987</i> )	Assessed production / design capacity
Category 6: Mine dewatering: premises on which water is extracted and discharged into the environment to allow the mining of ore	1,400,000 tonnes or more per year
Category 12: Screening etc. of material: premises (other than premises within category 5 or 8) on which material extracted from the ground is screened, washed, crushed, ground, milled, sized or separated	3,504,000 tonnes or more per year

This works approval is granted to the works approval holder, subject to the attached conditions, on 04 June 2025, by:

**MANAGER, RESOURCE INDUSTRIES**

an officer delegated under section 20 of the *Environmental Protection Act 1986* (WA)

## Works approval history

Date	Reference number	Summary of changes
04/06/2025	W2945/2025/1	Works approval granted.

## Interpretation

In this works approval:

- (a) the words 'including', 'includes' and 'include' in conditions mean "including but not limited to", and similar, as appropriate;
- (b) where any word or phrase is given a defined meaning, any other part of speech or other grammatical form of that word or phrase has a corresponding meaning;
- (c) where tables are used in a condition, each row in a table constitutes a separate condition;
- (d) any reference to an Australian or other standard, guideline, or code of practice in this works approval:
  - (i) if dated, refers to that particular version; and
  - (ii) if not dated, refers to the latest version and therefore may be subject to change over time;
- (e) unless specified otherwise, any reference to a section of an Act refers to that section of the EP Act; and
- (f) unless specified otherwise, all definitions are in accordance with the EP Act.

**NOTE:** This works approval requires specific conditions to be met but does not provide any implied authorisation for other emissions, discharges, or activities not specified in this works approval.

## Works approval conditions

The works approval holder must ensure that the following conditions are complied with:

### Construction phase

#### Infrastructure and equipment

1. The works approval holder must:
  - (a) construct and/or install the infrastructure and/or equipment;
  - (b) in accordance with the corresponding design and construction / installation requirements; and
  - (c) at the corresponding infrastructure location;
 as set out in Table 1.

**Table 1 Design and construction / installation requirements**

	Infrastructure	Design and construction / installation requirements	Infrastructure location
1.	Mobile crushing and screening plant comprising: <ul style="list-style-type: none"> <li>• Jaw crusher</li> <li>• Cone crusher</li> <li>• Screen</li> <li>• Automatic sampler</li> </ul>	<ul style="list-style-type: none"> <li>• Fitted with hose and water spray bars</li> <li>• Maximum design capacity of 400 tonnes per hour</li> <li>• Use of water cart for dust suppression on exposed areas when visible dust is seen leaving construction area</li> </ul>	Within 'Indicative Category 12' area as depicted on Figure 2, Schedule 1
2.	2.1 hectare run of mine (ROM) pad	<ul style="list-style-type: none"> <li>• Toe drains designed to direct stormwater runoff to a settlement pond within the ROM pad</li> </ul>	Within 'Indicative Category 12' area depicted on Figure 2, Schedule 1
3.	Dewater pipelines from West and East pit to turkeys nest  Dewater pipelines from turkeys nest to Five Mile Well Pit (about 12.5 km) and Sabbath Pit (about 7.4 km)	<ul style="list-style-type: none"> <li>• Use of water cart for dust suppression on exposed areas when visible dust is seen leaving construction area</li> <li>• Pipeline from turkeys nest to Five Mile Well Pit constructed with 225 mm polyethylene pipeline (PN10)</li> <li>• Pipeline from turkeys nest to Sabbath Pit constructed with 200 mm polyethylene pipeline (PN10)</li> <li>• Constructed within an earthen bund along entire length of pipeline</li> <li>• Fitted with a flow meter designed to enable measurement of discharge volumes to pits</li> <li>• Fitted with a leak detection instrumentation and isolation valves</li> <li>• Installation of 320 m<sup>3</sup> capacity scour pits at isolation points designed to allow direction of spills to areas where it could be recovered for</li> </ul>	'Pipeline to Sabbath Pit' and 'Pipeline to Five Mile Well' as depicted on Figure 1, Schedule 1

	Infrastructure	Design and construction / installation requirements	Infrastructure location
		<p>collection in the advent of pipe failure or leaks</p> <ul style="list-style-type: none"> <li>Pipeline required to meet the following standards: <ul style="list-style-type: none"> <li>a) AS/NZS 2033:3008: Installation of polyethylene pipe systems;</li> <li>b) AS/NZS 4129:2008: Fittings for polyethylene (PE) pipes for pressure applications;</li> <li>c) AS/NZS 4130:2009 Polyethylene (PE) pipes for pressure applications; and</li> <li>d) AS/NZS 4131:2010: Polyethylene (PE) compounds for pressure pipes and fittings.</li> </ul> </li> </ul>	
4.	Dewater turkey's nest	<ul style="list-style-type: none"> <li>Level control monitor fitted to pump located within nest</li> </ul>	'Turkeys nest' as depicted on Figure 2, Schedule 1

### Compliance reporting

2. The works approval holder must within 30 calendar days of an item of infrastructure or equipment required by condition 1 being constructed and/or installed:
  - (a) undertake an audit of their compliance with the requirements of condition 1; and
  - (b) prepare and submit to the CEO an Environmental Compliance Report on that compliance.
3. The Environmental Compliance Report required by condition 2, must include as a minimum the following:
  - (a) certification by a suitably qualified engineer that the items of infrastructure or component(s) thereof, as specified in condition 1, have been constructed in accordance with the relevant requirements specified in condition 1;
  - (b) as constructed plans and a detailed site plan for each item of infrastructure or component of infrastructure specified in condition 1; and
  - (c) be signed by a person authorised to represent the works approval holder and contains the printed name and position of that person.

### Time limited operations phase

#### Commencement and duration

4. The works approval holder may only commence time limited operations for an item of infrastructure identified in condition 1, where the Environmental Compliance Report as required by condition 2 has been submitted by the works approval holder for that item of infrastructure.
5. The works approval holder may conduct time limited operations for an item of infrastructure specified in condition 1 (as applicable):

- (a) for a period not exceeding 180 calendar days from the day the works approval holder meets the requirements of condition 4 for that item of infrastructure; or
- (b) until such time as a licence for that item of infrastructure is granted in accordance with Part V of the *Environmental Protection Act 1986*, if one is granted before the end of the period specified in condition 5(a).

### Time limited operations requirements and emission limits

6. During time limited operations, the works approval holder must ensure that the premises infrastructure and equipment listed in Table 2 and located at the corresponding infrastructure location is maintained and operated in accordance with the corresponding operational requirement set out in Table 2.

**Table 2 Infrastructure and equipment requirements during time limited operations**

	Site infrastructure and equipment	Operational requirement	Infrastructure location
1.	Mobile crushing and screening plant fitted with water sprays	<ul style="list-style-type: none"> <li>Water cart available to wet down exposed areas and stockpiles</li> <li>Cease crushing and screening activities if visible dust generated by this activity is observed depositing onto native vegetation</li> </ul>	Within 'Indicative Category 12' area as depicted on Figure 2, Schedule 1
2.	ROM pad	<ul style="list-style-type: none"> <li>Water cart available to wet down exposed areas and stockpiles</li> <li>During rainfall events stormwater runoff within the pad is directed to settlement pond in northwest corner of pad</li> </ul>	Within 'Indicative Category 12' area as depicted on Figure 2, Schedule 1
3.	Dewater pipelines	<ul style="list-style-type: none"> <li>Pipeline is contained within an earthen bund with 320 m<sup>3</sup> capacity scour pits</li> <li>Fitted with leak detection instrumentation and flow meters</li> <li>Minimum 24-hourly inspections of pipeline and secondary containment when operating to check for visual integrity, inspections to be recorded in a written log.</li> <li>Shutdown the required section of the pipeline system, if any leaks or spills from pumps or pipelines are detected, until the leak has been verified and/or repaired</li> </ul>	'Pipeline to Sabbath Pit' and 'Pipeline to Five Mile Well' as depicted on Figure 1, Schedule 1
4.	Dewater turkey's nest	<ul style="list-style-type: none"> <li>Fitted with level sensor</li> </ul>	'Turkeys nest' as depicted on Figure 2, Schedule 1
5.	Five Mile Well Pit Sabbath Pit	<ul style="list-style-type: none"> <li>Maintain a minimum vertical freeboard of 6 meters below the pit crest level of each pit</li> </ul>	'Sabbath Pit' and 'Five Mile Well Pit' as depicted on Figure 1, Schedule 1

7. During time limited operations, the works approval holder must ensure that the emission(s) specified in Table 3, are discharged only from the corresponding discharge point(s) and only at the corresponding discharge point location(s).

**Table 3 Authorised discharge points**

	Emission	Discharge point	Discharge point location
1.	Mine dewater	Dewater pipeline outlet within Five Mile Well Pit	"Category 6 discharge point" at Five Mile Well Pit, as depicted on Figure 1, Schedule 1
2.	Mine dewater	Dewater pipeline outlet within Sabbath Pit	"Category 6 discharge point" at Sabbath Pit, as depicted on Figure 1, Schedule 1

### Monitoring during time limited operations

8. The works approval holder must monitor emissions during time limited operations in accordance with Table 4 and record the results of all monitoring activity.

**Table 4 Discharge monitoring during time limited operations**

Discharge point	Monitoring location (as depicted on Figure 1, Schedule 1)	Parameter	Monitoring/ averaging Period	Frequency	Unit	Sampling Method
Dewater pipeline outlet within Five Mile Well Pit	P01	Volume of water discharged	Each monthly period (when discharging)	Continuous	kL	N/A
		pH <sup>1</sup>		Spot sample	pH units	AS5667.1-1998 and AS5667.10-1998.
		Total dissolved solids <sup>1</sup>			µS/cm	
		Standing water level		Spot measurement	Metres below pit crest level	N/A
Dewater pipeline outlet within Sabbath Pit	P02	Volume of water discharged	Each monthly period (when discharging)	Continuous	kL	N/A
		pH <sup>1</sup>		Spot sample	pH units	AS5667.1-1998 and AS5667.10-1998.
		Total dissolved solids <sup>1</sup>			µS/cm	
		Standing water level		Spot measurement	Metres below pit crest level	N/A

Note 1: In-field NATA accredited analysis permitted

### Compliance reporting

9. The works approval holder must submit to the CEO a report on the time limited operations within 30 calendar days of the completion date of time limited operations.
10. The works approval holder must ensure the report required by condition 9 includes the following:
  - (a) a summary of the time limited operations, including timeframes and amount of gold bearing ore processed;
  - (b) a summary of discharge monitoring parameter results obtained during time limited operations under condition 8.
  - (c) a summary of the environmental performance of all infrastructure as constructed or installed (as applicable), which at a minimum includes records detailing the:
    - (i) gold bearing ore processed;
    - (ii) product produced; and
    - (iii) volume of mine dewater discharged into Five Mile Well and Sabbath pits;
  - (d) a review of performance and compliance against the conditions of the works approval; and
  - (e) where the manufacturer's design specifications and the conditions of this works approval have not been met, what measures will the works approval holder take to meet them, and what timeframes will be required to implement those measures.

## Records and reporting (general)

11. The works approval holder must record the following information in relation to complaints received by the works approval holder (whether received directly from a complainant or forwarded to them by the Department or another party) about any alleged emissions from the premises:
  - (a) the name and contact details of the complainant, (if provided);
  - (b) the time and date of the complaint;
  - (c) the complete details of the complaint and any other concerns or other issues raised; and
  - (d) the complete details and dates of any action taken by the works approval holder to investigate or respond to any complaint.
12. The works approval holder must maintain accurate and auditable books including the following records, information, reports, and data required by this works approval:
  - (a) the works conducted in accordance with condition 1;
  - (b) any maintenance of infrastructure that is performed in the course of complying with condition 6;
  - (c) monitoring programmes undertaken in accordance with condition 8; and
  - (d) complaints received under condition 11.
13. The books specified under condition 12 must:
  - (a) be legible;
  - (b) if amended, be amended in such a way that the original version(s) and any subsequent amendments remain legible and are capable of retrieval;

- (c) be retained by the works approval holder for the duration of the works approval;  
and
- (d) be available to be produced to an inspector or the CEO as required.



## Definitions

In this works approval, the terms in Table 5 have the meanings defined.

**Table 5: Definitions**

Term	Definition
books	has the same meaning given to that term under the EP Act.
CEO	means Chief Executive Officer. CEO for the purposes of notification means: Director General Department administering the <i>Environmental Protection Act 1986</i> Locked Bag 10 Joondalup DC WA 6919 <a href="mailto:info@dwer.wa.gov.au">info@dwer.wa.gov.au</a>
Department	means the department established under section 35 of the <i>Public Sector Management Act 1994</i> and designated as responsible for the administration of Part V Division 3 of the EP Act.
discharge	has the same meaning given to that term under the EP Act.
emission	has the same meaning given to that term under the EP Act.
Environmental Compliance Report	means a report to satisfy the CEO that the conditioned infrastructure and/or equipment has been constructed and/or installed in accordance with the works approval.
EP Act	<i>Environmental Protection Act 1986</i> (WA).
EP Regulations	<i>Environmental Protection Regulations 1987</i> (WA).
monthly period	means a one-month period commencing from the first day of a month until the last day of the same month.
premises	the premises to which this licence applies, as specified at the front of this licence and as shown on the premises map (Figure 1) in Schedule 1 to this works approval.
prescribed premises	has the same meaning given to that term under the EP Act.
suitably qualified engineer	means a person who: (a) holds a relevant tertiary academic qualification; and (b) has a minimum of at least three years of experience working in the area / field of civil or mechanical engineering (whichever is relevant to the item of infrastructure).
time limited operations	refers to the operation of the infrastructure and equipment identified under this works approval that is authorised for that purpose, subject to the relevant conditions.

Term	Definition
works approval	refers to this document, which evidences the grant of the works approval by the CEO under section 54 of the EP Act, subject to the conditions.
works approval holder	refers to the occupier of the premises being the person to whom this works approval has been granted, as specified at the front of this works approval.

---

**END OF CONDITIONS**



Schedule 1: Maps

Premises map

The boundary of the prescribed premises is shown in the map below (Figure 1).

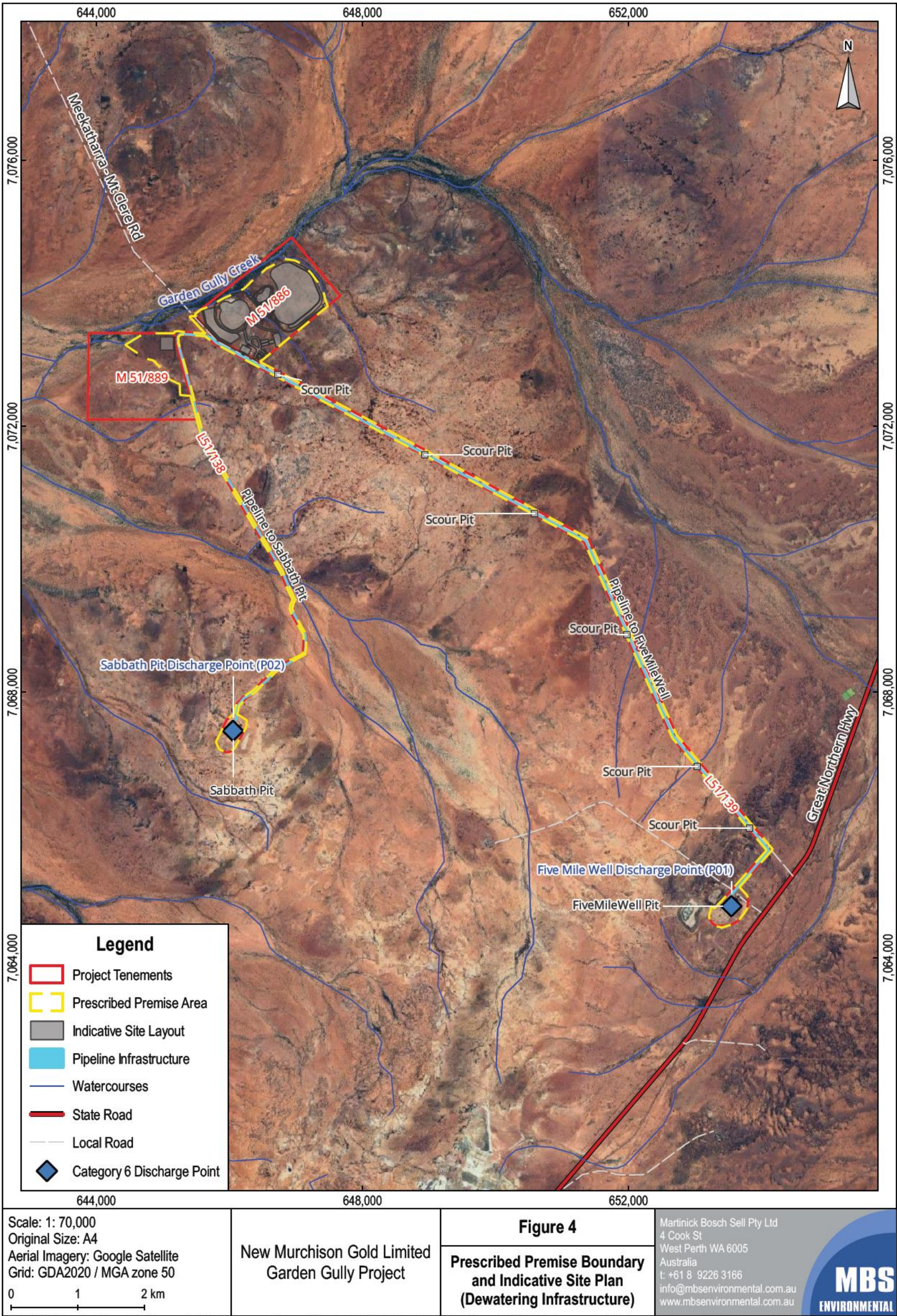


Figure 1: Map of the boundary of the prescribed premises and Category 6 infrastructure layout



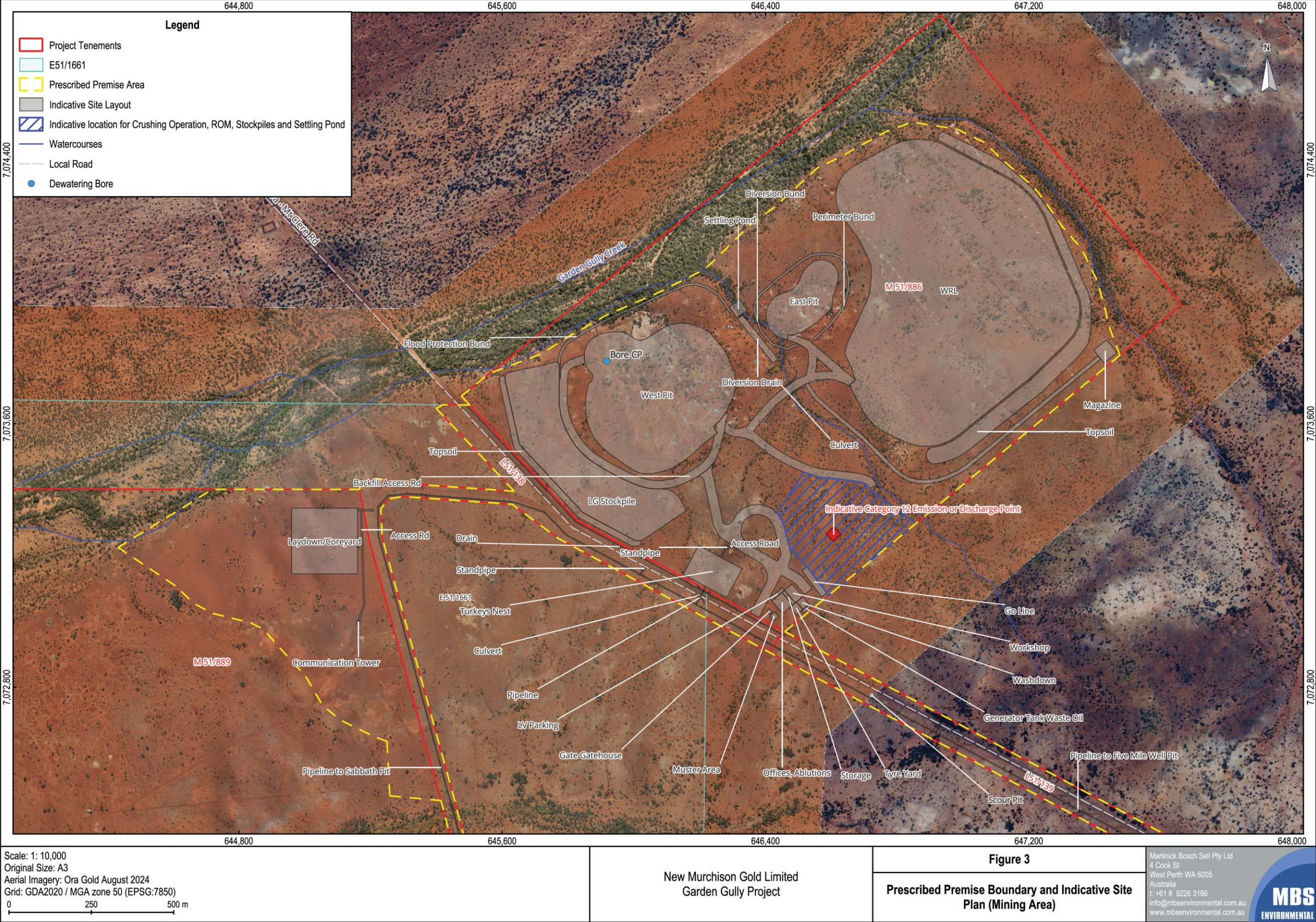


Figure 2: Category 12 infrastructure layout