



| | |
|------------------------------------|--|
| Works approval number | W6901/2024/1 |
| Works approval holder | Talison Lithium Australia Pty Ltd |
| ACN | 139 401 308 |
| Registered business address | 216 St Georges Terrace |
| DWER file number | DER2021/000628 and INS-0002735 |
| Duration | 22/07/2024 to 21/07/2029 |
| Date of issue | 22/07/2024 |
| Date of amendment | 11 April 2025 |
| Premises details | Talison Lithium Mine Maranup Ford Road Greenbushes WA 6254 Part of mining tenements M01/6 and M01/7 |

| Prescribed premises category description (Schedule 1, <i>Environmental Protection Regulations 1987</i>) | Assessed production / design capacity |
|---|--|
| Category 5: Processing or beneficiation of metallic or non-metallic ore | 7,100,000 tonnes per year |

This amended works approval is granted to the works approval holder, subject to the attached conditions, on 11 April 2025, by:

MANAGER, PROCESS INDUSTRIES

an officer delegated under section 20 of the *Environmental Protection Act 1986* (WA)

Works approval history

| Date | Reference number | Summary of changes |
|---|------------------|--|
| W6618/2021/1 – initial works approval for TSF4 | | |
| 08/03/2022 | W6618/2021/1 | Works approval for construction of TSF4 granted. |
| 04/07/2023 | W6618/2021/1 | Works approval amended to allow staged construction of starter embankment of TSF4 Cell 1 (i.e. starter embankment to 261 m AHD to subsequent lift to 265 m AHD). |
| 01/09/2023 | W6618/2021/1 | Works approval amended for modification of TSF4 Cell 1 liner. |
| 27/03/2024 | W6618/2021/1 | Works approval amended for modification of TSF4 Cell 2 liner. |
| W6901/2024/1 – this approval | | |
| 22/07/2024 | W6901/2024/1 | Works approval for TSF4 embankment lift to 270 m AHD and increased tailings deposition from 7,000,000 tonnes per year to 7,100,000 tonnes per year. |
| 11/04/2025 | W6901/2024/1 | Works approval amendment to make changes to the specifications of the construction and material for the embankment raise. |

Interpretation

In this works approval:

- (a) the words ‘including’, ‘includes’ and ‘include’ in conditions mean “including but not limited to”, and similar, as appropriate;
- (b) where any word or phrase is given a defined meaning, any other part of speech or other grammatical form of that word or phrase has a corresponding meaning;
- (c) where tables are used in a condition, each row in a table constitutes a separate condition;
- (d) any reference to an Australian or other standard, guideline, or code of practice in this works approval:
 - (i) if dated, refers to that particular version; and
 - (ii) if not dated, refers to the latest version and therefore may be subject to change over time;
- (e) unless specified otherwise, any reference to a section of an Act refers to that section of the EP Act; and
- (f) unless specified otherwise, all definitions are in accordance with the EP Act.

NOTE: This works approval requires specific conditions to be met but does not provide any implied authorisation for other emissions, discharges, or activities not specified in this works approval.

Works approval conditions

The works approval holder must ensure that the following conditions are complied with:

General

1. The works approval holder must manage dust generation at the premises by wetting down activities associated with construction of the tailings storage facility 4 (TSF4) embankment lift to 270 m AHD.

Construction phase

Infrastructure and equipment (critical containment infrastructure – tailings storage facility)

2. The works approval holder must:
 - (a) construct all critical containment infrastructure;
 - (b) in accordance with the corresponding design and construction requirements; and
 - (c) at the corresponding infrastructure location; as set out in Table 1.

Table 1: Critical containment infrastructure design and construction requirements

| | Infrastructure | Design and construction requirements | Infrastructure location |
|----|---|---|---------------------------------|
| 1. | TSF4 embankment lift to 270 m AHD (Cell 1 and Cell 2): General | (a) Constructed as per the design specifications shown in Figure 2 to Figure 9 in Schedule 1; (b) Maximum embankment height authorised to 270 m AHD / 1270 m RL as shown in Figure 5, Figure 6 and Figure 7 of Schedule 1; (c) Constructed to provide a minimum 0.9 metre total freeboard (including an allowance for a 1 in 100 year event, 72 hour period of 217 mm) above the normal operating pond; (d) Any mine waste rock to be used in the embankment construction shall be non-acid forming; (e) Perimeter embankment will have a minimum 3(H):1(V) upstream and downstream slopes; (f) Perimeter embankment minimum crest width for cell 1: <ol style="list-style-type: none"> (i) north: 7.5 m; (ii) east: 31.5 m; and (iii) south: 31.5 m; (g) Perimeter embankment minimum crest width for cell 2: <ol style="list-style-type: none"> (i) north: 7.5 m; (ii) west: 56.4 m; and (iii) south: 31.5 m; and (h) Divider embankment constructed using centreline construction with a minimum 3(H):1(V) slope. | As shown Figure 1 of Schedule 1 |

| | | | |
|----|---|--|--|
| 2. | <p>TSF4 embankment lift to 270 m AHD (Cell 1 and Cell 2):</p> <p>Bituminous geomembrane (BGM) liner</p> | <ul style="list-style-type: none"> (a) Installation of new BGM liner along the embankment lift to 270 m AHD, to be tied into the existing liner for the embankment at 265 m AHD where present. As shown in Figure 4, Figure 8 and Figure 9 of Schedule 1; (b) Installed by a competent and appropriately qualified installer and deployed in accordance with the manufacturers specifications; (c) Subgrade for BGM liner to have: <ul style="list-style-type: none"> (i) minimum 300 mm thickness on embankments; (ii) be free from angular material (i.e. sharp rocks), vegetation, tree roots and stumps; and (iii) have less than 3% organic material. (d) Minimum BGM installation specifications include: <ul style="list-style-type: none"> (i) The panels shall overlap 20 cm (minimum) for seaming. Ends and overlaps must be welded on a homogenous and continuous basis to ensure a watertight seam, leaving 10 – 30 mm bitumen bead along the seam; (ii) Quadruple overlaps due to alignment of 4 strips are not permitted. Triple overlaps must be offset by 300mm and patched; (iii) Field seams shall be non-destructively tested for continuity over their full length in accordance with the installers Quality Control procedures. Any seams which fail shall be documented and repaired in accordance with the installers Quality Control procedures. (iv) Non-destructive confirmational testing (Electrical leak survey in accordance with ASTM D7953) shall be conducted on installed BGM liner; (v) Immediately prior to covering the BGM must be inspected for defects, tears, holes or damage; and (vi) Tears, holes, blisters, and other defects shall be repaired with patches made of the same BGM and extend a minimum 200 mm beyond the edge of defects. (e) BGM liner (on embankment) to have the following properties: <ul style="list-style-type: none"> (i) permeability of $<6.0 \times 10^{-14}$ m/s; (ii) nominal thickness greater than 3.5 mm (ASTM D5199); (iii) Mass per unit area greater than 4.2 kg/m² (ASTM D5261); (iv) Tensile strength at least 24.8 kN/m longitudinal direction and 21.8 kN/m cross direction (ASTM D7275); and (v) Tensile tear resistance at least 713 N longitudinal direction and 638 N cross direction (ASTM D4073). (f) BGM liner (on floor) to have the following properties: <ul style="list-style-type: none"> (i) permeability of $<6.0 \times 10^{-14}$ m/s; | <p>As shown in Figure 8 and Figure 9 of Schedule 1</p> |
|----|---|--|--|

| | Infrastructure | Design and construction requirements | Infrastructure location |
|----|--|--|--|
| | | <ul style="list-style-type: none"> (ii) nominal thickness greater than 3.1 mm (ASTM D5199); (iii) Mass per unit area greater than 3.7 kg/m² (ASTM D5261); (iv) Tensile strength at least 16.5 kN/m longitudinal direction and 13.5kN/m cross direction (ASTM D7275); and (v) Tensile tear resistance at least 563N longitudinal direction and 375 N cross direction (ASTM D4073). | |
| 3. | TSF4 embankment lift to 270 m AHD (Cell 1 and Cell 2): Seepage collection | <ul style="list-style-type: none"> (a) Construction of seepage collection systems (above liner drainage) and connection to the existing system; and (b) Extension of toe drains. | As shown in Figure 2 and Figure 3 of Schedule 1. |
| 4. | TSF4 embankment lift to 270 m AHD (Cell 1 and Cell 2): Piezometers | Installation of 4 vibrating wire piezometers as shown in Figure 14a and Figure 14b of Schedule 1 | as shown in in Figure 14a and Figure 14b of Schedule 1 |
| 5. | TSF4 embankment lift to 270 m AHD (Cell 1 and Cell 2): Additional underdrainage pipelines | <ul style="list-style-type: none"> (a) Pipelines to be installed according to Australian Standards AS/NZS 2033-2008, AS/NZS 4130-2018, AS 4131-2010 for installation of polyethylene pipe systems, pipes for pressure applications and polyethylene compounds for pressure and fittings; (b) Pipes shall be placed and installed in accordance with the manufacturer's specifications; and (c) All pipes shall be surveyed and inspected prior to placement of backfill | As shown in Figure 10 and Figure 11 of Schedule 1 |

Construction of groundwater monitoring wells

3. The works approval holder must design, construct, and install groundwater monitoring wells in accordance with the requirements specified in Table 2.

Table 2: Infrastructure requirements – groundwater monitoring wells

| Infrastructure | Design, construction, and installation requirements | Monitoring well location(s) | Timeframe |
|---|--|---|---|
| Groundwater monitoring well(s): Three bores (shallow, intermediate and deep) for each of the following TSF4 perimeter bores: <ul style="list-style-type: none">• MB24-01• MB24-02• MB24-03• MB24-04• MB24-05• MB24-06• MB24-07• MB24-08 | <p><u>Well design and construction:</u> Designed and constructed in accordance with <i>ASTM D5092/D5092M-16: Standard practice for design and installation of groundwater monitoring bores</i>.</p> <p>Well screens must target the part, or parts, of the aquifer most likely to be affected by contamination¹. Where temporary/seasonal perched features are present, wells must be nested, and the perched features individually screened. The screened intervals should be no longer than 6 metres.</p> | Perimeter bores as depicted in Figure 12 of Schedule 1. Proposed coordinates given in Schedule 2. | Must be constructed, developed (purged), and determined to be operational by no later than 30 calendar days prior to the commencement of time limited operations. |
| & Groundwater monitoring well adjacent to surface water monitoring point SW23-02 (as shown in Figure 13) | <p><u>Logging of borehole:</u> Soil samples must be collected and logged during the installation of the monitoring wells.</p> <p>A record of the geology encountered during drilling must be described and classified in accordance with the Australian Standard Geotechnical Site Investigations AS1726.</p> <p>Any observations of staining / odours or other indications of contamination must be included in the bore log.</p> | Groundwater monitoring well adjacent to SW23-02 as depicted in Figure 13 | |
| | <p><u>Well construction log:</u> Well construction details must be documented within a well construction log to demonstrate compliance with <i>ASTM D5092/D5092M-16</i>. The construction logs shall include elevations of the top of casing position to be used as the reference point for water-level measurements, and the elevations of the ground surface protective installations.</p> | | |
| | <p><u>Well development:</u> All installed monitoring wells must be developed after drilling to remove fine sand, silt, clay and any drilling mud residues from around the well screen to ensure the hydraulic functioning of the well. A detailed record should be kept of well development activities and included in the well construction log.</p> | | |
| | <p><u>Installation survey:</u> the vertical (top of casing) and horizontal position of each monitoring well must be surveyed and subsequently mapped by a suitably qualified surveyor.</p> | | |
| | <p><u>Well network map:</u> a well location map (using aerial image overlay) must be prepared and include the location of all monitoring wells in the monitoring network and their respective identification numbers.</p> | | |

Note 1: refer to Section 8 of Schedule B2 of the *Assessment of Site Contamination NEPM* for guidance on well screen depth and length.

Groundwater monitoring prior to time limited operations

4. The works approval holder must conduct groundwater monitoring in accordance with the requirements of Schedule 3 and:
- (a) for the corresponding parameter;

- (b) at the corresponding frequency;
 - (c) in the corresponding unit; and
 - (d) following the corresponding method and detail;
- for monitoring wells in accordance with Table 3.

Table 3: Groundwater monitoring prior to time limited operations

| Monitoring well location | Parameter ² | Unit | Frequency | Method |
|--|---|-----------------------------------|--|---------------------------------------|
| Three bores (shallow, intermediate and deep) for each of the following TSF4 perimeter locations as installed according to condition 3: • MB24-01 • MB24-02 • MB24-03 • MB24-04 • MB24-05 • MB24-06 • MB24-07 • MB24-08 & Bore adjacent to SW23-02 as required by condition 3 | Standing water level | Metres below ground level (m bgl) | A sampling event within 1 month following monitoring well installation and prior to time limited operations. | AS/NZS 5667.1 & AS/NZS 5667.11 |
| | pH ¹ | pH units | | |
| | Electrical conductivity | µS/cm | | |
| | Total dissolved solids | (TDS) | | |
| | Hardness | mg/L | | |
| | Dissolved oxygen ¹ | mg/L | | |
| | Major cations and anions <ul style="list-style-type: none">• Calcium• Chloride• Magnesium• Manganese• Nitrate• Phosphate• Potassium• Sodium• Sulfate | mg/L | | |
| | Total and dissolved metals, metalloids and non-metals <ul style="list-style-type: none">• Aluminium• Antimony• Arsenic• Barium• Beryllium• Boron• Cadmium• Chromium III• Chromium VI• Cobalt• Copper• Iron• Lead• Lithium• Mercury• Molybdenum• Nickel• Radium 226• Radium 228• Rubidium• Selenium• Strontium• Thallium• Thorium• Tin• Uranium• Zinc | | | |

Note 1: In-field non-NATA accredited analysis permitted

Note 2: Samples are to be filtered and measured at the appropriate LORs so as to allow comparison with relevant water quality criteria (including for aquatic ecology and human health)

Surface water monitoring prior to time limited operations

5. The works approval holder must conduct surface water monitoring in accordance with the requirements specified in Schedule 3 and:
- for the corresponding parameter;
 - at the corresponding frequency;
 - in the corresponding unit; and
 - following the corresponding method and detail;
- for monitoring locations in accordance with Table 4.

Table 4: Surface water monitoring prior to time limited operations

| Monitoring location | Parameter ² | Unit | Frequency | Method |
|--|--|----------|--|-------------------------------|
| Surface water monitoring locations along Woljenup Creek: SW24-01 SW23-01 SW23-02 as shown in Figure 13 | pH ¹ | pH units | No later than 30 calendar days prior to the commencement of time limited operations. | AS/NZS 5667.1 & AS/NZS 5667.6 |
| | Temperature | °C | | |
| | Electrical conductivity | µS/cm | | |
| | Total dissolved solids | (TDS) | | |
| | Alkalinity (total as CaCO ₃) | mg/L | | |
| | Dissolved oxygen ¹ | mg/L | | |
| | Major cations and anions <ul style="list-style-type: none"> Calcium Chloride Nitrate Sulfate Total and dissolved metals, metalloids and non-metals <ul style="list-style-type: none"> Aluminium Antimony Arsenic Cadmium Caesium Lithium Manganese Rubidium Thallium Uranium Vanadium Zinc | mg/L | | |

Note 1: In-field non-NATA accredited analysis permitted.

Note 2: Samples are to be filtered and measured at the appropriate LORs so as to allow comparison with relevant water quality criteria (including for aquatic ecology and human health)

6. The works approval holder must adhere to the field quality assurance and quality control procedures specified in Schedule 3 for the monitoring required by conditions 4 and 5.
7. The works approval holder must ensure that all sample analysis is undertaken by laboratories with current accreditation from the National Association of Testing Authorities (NATA) for the relevant parameters, unless otherwise specified in conditions 4 and 5.

Compliance reporting (critical containment infrastructure)

8. The works approval holder must within 90 calendar days of the Critical Containment Infrastructure identified by condition 2 being constructed:
 - (a) undertake an audit of their compliance with the requirements of condition 2; and
 - (b) prepare and submit to the CEO a Critical Containment Infrastructure Report on that compliance.
9. The Critical Containment Infrastructure Report required by condition 8 must include as a minimum the following:
 - (a) certification by a suitably qualified geotechnical engineer that each item of critical containment infrastructure or component thereof, as specified in condition 2, has been built and installed in accordance with the requirements specified in condition 2;
 - (b) as constructed plans and a detailed site plan showing the location and dimensions for each item of critical containment infrastructure or component thereof, as specified in condition 2;
 - (c) photographic evidence of the installation of the infrastructure;
 - (d) records of any quality assurance/control testing undertaken to demonstrate the requirements of condition 2, including the basis of any method specification adopted;
 - (e) a summary of BGM liner defects and repairs recorded during installation of the liner in accordance with condition 2; and
 - (f) be signed by a person authorised to represent the works approval holder and contains the printed name and position of that person.

Compliance reporting (well construction and monitoring)

10. The works approval holder must within 60 calendar days of groundwater monitoring well installation required by condition 3:
 - (a) undertake an audit of their compliance with the requirements of condition 3; and
 - (b) prepare and submit to the CEO an Environmental Compliance Report on that compliance.
11. The works approval holder must submit to the CEO, within 60 calendar days of completing monitoring required by conditions 4 and 5, a monitoring report demonstrating their compliance with condition 4 and 5, and must include:
 - (a) a clear statement of the scope of work carried out;
 - (b) a description of the field methodologies employed;
 - (c) a summary of the field and laboratory quality assurance / quality control (QA/QC) program;
 - (d) copies of the field monitoring records and field QA/QC documentation;
 - (e) an assessment of reliability of field procedures and laboratory results;
 - (f) a tabulated summary of results, as well as all raw data provided in an accompanying Microsoft Excel spreadsheet digital document/file (or a compatible equivalent digital document/file), with all results being clearly referenced to laboratory certificates of analysis;

- (g) a diagram with aerial image overlay showing all monitoring locations and depicting groundwater level contours, flow direction and hydraulic gradient (relevant site features including discharge points and other potential sources of contamination must also be shown);
- (h) an interpretive summary and assessment of the results against relevant assessment levels for water, as published in the Guideline Assessment and management of contaminated sites;
- (i) an interpretive summary and proposal for dilution attenuation factor (DAF) derived values to allow sufficient protection of the water quality and ecology within Woljenup Creek;
- (j) trend graphs to provide a graphical representation of historical results and to support the interpretive summary.

Note 1: General guidance on report presentation can be found in the Department's *Guideline: Assessment and management of contaminated sites*.

Time limited operations phase

Commencement and duration

12. The works approval holder may only commence time limited operations for an item of critical containment infrastructure identified in condition 2:
 - (a) where the CEO has notified the works approval holder that the Critical Containment Infrastructure Report for that item of infrastructure as required by condition 8 meets the requirements of that condition; or
 - (b) where at least 45 business days have passed after the Critical Containment Infrastructure Report (CCIR) for that item of infrastructure as required by condition 8 has been submitted to the CEO.
13. The works approval holder may conduct time limited operations for an item of infrastructure specified in condition 14 (as applicable):
 - (a) for a period not exceeding 270 calendar days from the day the works approval holder meets the requirements of condition 12 for that item of infrastructure; or
 - (b) until such time as a licence for that item of infrastructure is granted in accordance with Part V of the *Environmental Protection Act 1986*, if one is granted before the end of the period specified in condition 13(a).

Time limited operations requirements and emission limits

14. During time limited operations, the works approval holder must ensure that the premises infrastructure and equipment listed in Table 5 and located at the corresponding infrastructure location is maintained and operated in accordance with the corresponding operational requirement set out in Table 5.

Table 5: Infrastructure and equipment requirements during time limited operations

| | Site infrastructure and equipment | Operational requirement | Infrastructure location |
|----|-----------------------------------|---|---------------------------------|
| 1. | TSF4 embankment lift to 270 m AHD | (a) To be maintained as per the design and construction/installation requirements in condition 2; (b) Maintained with a minimum 0.9 m total freeboard (including an allowance for a 1 in 100 year event, 72 hour period of | As shown Figure 1 of Schedule 1 |

| | Site infrastructure and equipment | Operational requirement | Infrastructure location |
|----|---|--|---|
| | | 217mm) above the normal operating pond; (c) Minimise the size of the decant pond as much as practicable; (d) Visual inspections daily and following significant rainfall events to check: (i) Freeboard capacity; (ii) Location and size of decant pond (in hectares and expressed as a total percentage of the surface area of the TSF); (iii) Change in seepage conditions or sudden change in water level; and (iv) Signs of erosion. | |
| 2. | TSF4 embankment lift to 270 m AHD – BGM liner | BGM liner maintained as per the design and construction/installation requirements in condition 2 | As shown in Figure 8 and Figure 9 of Schedule 1 |
| 3. | TSF4 embankment lift to 270 m AHD | Seepage collection maintained as per the design and construction requirements in condition 2 | As shown in Figure 2 and Figure 3 of Schedule 1 |
| 4. | TSF4 embankment lift to 270 m AHD: Additional pipelines (additional underdrainage pipelines) | Pipelines maintained as per the design and construction requirements in condition 2 | As shown in Figure 10 and Figure 11 of Schedule 1 |

Emissions and discharges

15. The works approval holder must ensure that the emissions specified in Table 6 are discharged only from the corresponding discharge point and only at the corresponding discharge point location.

Table 6: Authorised discharge points

| Emission | Discharge point | Discharge point location |
|---|------------------------------------|---|
| Tailings from onsite mining of the Talison Greenbushes lithium ore body | Tailings storage facility 4 (TSF4) | Tailings storage facility 4 (TSF4) as shown in Figure 1 of Schedule 1 |

Tailings characterisation

16. The works approval holder must provide completed results from long-term tailings kinetic leach testing. Interim results from kinetic leach tests¹ (first 18 months) have been provided to DWER, and final results of the remaining kinetic leach testing (minimum 6 to 12 additional months) must be provided to DWER once complete.

Note 1: GHD 2024 Talison Kinetic Leach Testing – Progressing Kinetic and Waste Rock Leach Test Results (August 2022 to December 2023).

Monitoring during time limited operations

17. The works approval holder must conduct groundwater monitoring in accordance with the requirements of Schedule 3 and:

- (a) for the corresponding parameter;
- (b) at the corresponding frequency;
- (c) in the corresponding unit; and
- (d) following the corresponding method and detail;

for monitoring wells in accordance with Table 7.

Table 7: Groundwater monitoring during time limited operations

| Monitoring well location | Parameter ² | Unit | Frequency | Method |
|---|--|-----------------------------------|---|---|
| <div>Three bores (shallow, intermediate and deep) for each of the following TSF4 perimeter locations as installed according to condition 3 :</div> <ul style="list-style-type: none">• MB24-01• MB24-02• MB24-03• MB24-04• MB24-05• MB24-06• MB24-07• MB24-08 <div>Bore adjacent to SW23-02 as required by condition 3</div> | Standing water level | Metres below ground level (m bgl) | <div>A single sampling event undertaken between 60 and 180 calendar days following commencement of time limited operations (specifically tailings deposition into TSF4 after embankment construction to 270 m AHD).</div> | <div>AS/NZS 5667.1 & AS/NZS 5667.11</div> |
| | pH ¹ | pH units | | |
| | Electrical conductivity | µS/cm | | |
| | Total dissolved solids | (TDS) | | |
| | Hardness | mg/L | | |
| | Dissolved oxygen ¹ | mg/L | | |
| | Major cations and anions <ul style="list-style-type: none">• Calcium• Chloride• Magnesium• Manganese• Nitrate• Phosphate• Potassium• Sodium• Sulfate | mg/L | | |
| | Total and dissolved metals, metalloids and non-metals <ul style="list-style-type: none">• Aluminium• Antimony• Arsenic• Barium• Beryllium• Boron• Cadmium• Chromium III• Chromium VI• Cobalt• Copper• Iron• Lead• Lithium• Mercury• Molybdenum• Nickel• Radium 226 | | | |
| | | | | |
| | | | | |
| | | | | |
| | | | | |
| | | | | |
| | | | | |
| | | | | |
| | | | | |
| | | | | |

| | | | | |
|--|--|--|--|--|
| | <ul style="list-style-type: none"> • Radium 228 • Rubidium • Selenium • Strontium • Thallium • Thorium • Tin • Uranium • Zinc | | | |
|--|--|--|--|--|

Note 1: In-field non-NATA accredited analysis permitted.

Note 2: Samples are to be filtered and measured at the appropriate LORs so as to allow comparison with relevant water quality criteria (including for aquatic ecology and human health)

18. The works approval holder must conduct surface water monitoring in accordance with the requirements specified in Schedule 3 and:

- the corresponding parameter;
- at the corresponding frequency;
- in the corresponding unit; and
- following the corresponding method and detail;

for monitoring locations in accordance with Table 8.

Table 8: Surface water monitoring during time limited operations

| Monitoring location | Parameter ² | Unit | Frequency | Method |
|--|---|----------|--|--------------------------------------|
| Surface water monitoring locations along Woljenup Creek: SW24-01 SW23-01 SW23-02 as shown in Figure 13 | pH ¹ | pH units | A single sampling event undertaken between 60 and 180 calendar days following commencement of time limited operations (specifically tailings deposition into TSF4 after embankment construction to 270 m AHD). | AS/NZS 5667.1 & AS/NZS 5667.6 |
| | Temperature | °C | | |
| | Electrical conductivity | µS/cm | | |
| | Total dissolved solids | (TDS) | | |
| | Alkalinity (total as CaCO ₃) | mg/L | | |
| | Dissolved oxygen ¹ | mg/L | | |
| | Major cations and anions <ul style="list-style-type: none">• Calcium• Chloride• Nitrate• Sulfate | mg/L | | |
| | Total and dissolved metals, metalloids and non-metals <ul style="list-style-type: none">• Aluminium• Antimony• Arsenic• Cadmium• Caesium• Lithium• Manganese• Rubidium• Thallium• Uranium• Vanadium• Zinc | | | |
| | | | | |

Note 1: In-field non-NATA accredited analysis permitted

Note 2: Samples are to be filtered and measured at the appropriate LORs so as to allow comparison with relevant water quality criteria (including for aquatic ecology and human health)

19. The works approval holder must adhere to the field quality assurance and quality control procedures specified in Schedule 3 for the monitoring required by conditions 17 and 18.
20. The works approval holder must ensure that all sample analysis is undertaken by laboratories with current accreditation from the National Association of Testing Authorities (NATA) for the relevant parameters, unless otherwise specified in conditions 17 and 18.
21. The works approval holder must submit to the CEO, within 60 calendar days of completing monitoring required by conditions 17 and 18, a monitoring report demonstrating their compliance with condition 17 and 18, and must include:
 - (a) a clear statement of the scope of work carried out;
 - (b) a description of the field methodologies employed;
 - (c) a summary of the field and laboratory quality assurance / quality control (QA/QC) program;
 - (d) copies of the field monitoring records and field QA/QC documentation;
 - (e) an assessment of reliability of field procedures and laboratory results;
 - (f) a tabulated summary of results, as well as all raw data provided in an accompanying Microsoft Excel spreadsheet digital document/file (or a compatible equivalent digital document/file), with all results being clearly referenced to laboratory certificates of analysis;
 - (g) a diagram with aerial image overlay showing all monitoring locations and depicting groundwater level contours, flow direction and hydraulic gradient (relevant site features including discharge points and other potential sources of contamination must also be shown);
 - (h) an interpretive summary and assessment of the results against relevant assessment levels for water, as published in the Guideline Assessment and management of contaminated sites¹;
 - (i) comparison with DAF derived values; and
 - (j) trend graphs to provide a graphical representation of historical results and to support the interpretive summary.

Note 1: General guidance on report presentation can be found in the Department's *Guideline: Assessment and management of contaminated sites*.

Compliance reporting – time limited operations

22. The works approval holder must submit to the CEO a report on the time limited operations within 30 calendar days of the completion date of time limited operations or 90 calendar days before the expiration date of the works approval, whichever is the sooner.
23. The works approval holder must ensure the report required by condition 22 includes the following:
 - (a) a summary of the time limited operations, including timeframes and amount of material discharged to TSF4;
 - (b) a summary of monitoring results obtained under condition 4, 5, 17 and 18;
 - (c) a summary of the environmental performance of all infrastructure as constructed or installed; and

- (d) where the manufacturer's design specifications and the conditions of this works approval have not been met, what measures will the works approval holder take to meet them, and what timeframes will be required to implement those measures.

Records and reporting (general)

- 24.** The works approval holder must record the following information in relation to complaints received by the works approval holder (whether received directly from a complainant or forwarded to them by the Department or another party) about any alleged emissions from the premises:
 - (a) the name and contact details of the complainant, (if provided);
 - (b) the time and date of the complaint;
 - (c) the complete details of the complaint and any other concerns or other issues raised; and
 - (d) the complete details and dates of any action taken by the works approval holder to investigate or respond to any complaint.
- 25.** The works approval holder must maintain accurate and auditable books including the following records, information, reports, and data required by this works approval:
 - (a) the works conducted in accordance with condition 2 and 3;
 - (b) any maintenance of infrastructure that is performed in the course of complying with condition 14;
 - (c) monitoring programmes undertaken in accordance with condition(s) 4, 5, 17 and 18;
 - (d) complaints received under condition 24.
- 26.** The books specified under condition 25 must:
 - (a) be legible;
 - (b) if amended, be amended in such a way that the original version(s) and any subsequent amendments remain legible and are capable of retrieval;
 - (c) be retained by the works approval holder for the duration of the works approval; and
 - (d) be available to be produced to an inspector or the CEO as required.

Definitions

In this works approval, the terms in Table 9 have the meanings defined.

Table 9: Definitions

| Term | Definition |
|--|---|
| Assessment of Site Contamination NEPM | means the <i>National Environment Protection (Assessment of Site Contamination) Measure 1999</i> , as amended from time to time. |
| books | has the same meaning given to that term under the EP Act. |
| AS/NZS 2033 | means the Australian Standard AS/NZS 2033: <i>Installation of polyethylene pipe systems</i> . |
| AS/NZS 4130 | means the Australian Standard AS/NZS 4130 <i>Polyethylene pipes for pressure applications</i> . |
| AS/NZS 5667.1 | means the Australian Standard AS/NZS 5667.1 <i>Water Quality – Sampling – Guidance on the design of sampling programs, sampling techniques and the preservation and handling of samples</i> . |
| AS/NZS 5667.6 | means the Australian Standard AS/NZS 5667.1 <i>Water Quality – Sampling – Guidance on the sampling of rivers and streams</i> . |
| AS/NZS 5667.11 | means the Australian Standard AS/NZS 5667.11 <i>Water Quality - Sampling Guidance on sampling of groundwaters</i> . |
| ASTM D5092/D5092M-16 | means the ASTM international standard for <i>Standard practice for design and installation of groundwater monitoring wells</i> (Designation: ASTM D5092/D5092M-16). |
| ASTM D5199 | means the ASTM international standard: <i>Standard Test Method for Measuring the Nominal Thickness of Geosynthetics</i> |
| ASTM D7275 | means the ASTM international standard: <i>Standard Test Method for Tensile Properties of Bituminous Geomembranes (BGM)</i> |
| BGM | bituminous geomembrane liner |
| CEO | means Chief Executive Officer. CEO for the purposes of notification means: Director General Department administering the <i>Environmental Protection Act 1986</i> Locked Bag 10 Joondalup DC WA 6919 info@dwer.wa.gov.au |
| critical containment infrastructure | means the items of infrastructure listed in condition 2. |
| Critical Containment Infrastructure Report | means a report to satisfy the CEO that works of critical containment infrastructure have been constructed in accordance with the works approval. |

| Term | Definition |
|--|---|
| Department | means the department established under section 35 of the <i>Public Sector Management Act 1994</i> and designated as responsible for the administration of Part V Division 3 of the EP Act. |
| dilution attenuation factor (DAF) derived values | DAF values can be used to determine the highest concentration that would be permissible in groundwater at the TSF that would protect a more distant receptor. This is done by multiplying the DAF value by the required concentration at the receptor to determine the maximum permissible concentration in groundwater near the contamination source (i.e. the TSF). In the absence of detailed information regarding the site, a suitable DAF value for TSF4 and downstream receptors has been calculated to be 6. Please refer to the decision report for W6901/2024/1 for further detail. |
| discharge | has the same meaning given to that term under the EP Act. |
| emission | has the same meaning given to that term under the EP Act. |
| Environmental Compliance Report | means a report to satisfy the CEO that the conditioned infrastructure and/or equipment has been constructed and/or installed in accordance with the works approval. |
| EP Act | <i>Environmental Protection Act 1986</i> (WA). |
| EP Regulations | <i>Environmental Protection Regulations 1987</i> (WA). |
| McJannet <i>et al.</i> (2022) | McJannet, D., Carlin, G., Ticehurst, C., Greve, A. and Sardella, C., 2022. Determination of evaporation from a tailings storage facility using field measurements and satellite observations. <i>Mine Water and the Environment</i> , 41 , 176-193. |
| premises | the premises to which this licence applies, as specified at the front of this licence and as shown on the premises map (Figure 1) in Schedule 1 to this works approval. |
| prescribed premises | has the same meaning given to that term under the EP Act. |
| suitably qualified geotechnical engineer | Means a competent professional who: <ul style="list-style-type: none"> (a) holds a qualification in geotechnical engineering or equivalent; and (b) has a minimum of at least three years experience working as a geotechnical engineer. |
| time limited operations | refers to the operation of the infrastructure and equipment identified under this works approval that is authorised for that purpose, subject to the relevant conditions. |
| waste | has the same meaning given to that term under the EP Act. |
| works approval | refers to this document, which evidences the grant of the works approval by the CEO under section 54 of the EP Act, subject to the conditions. |

| Term | Definition |
|-----------------------|---|
| works approval holder | refers to the occupier of the premises being the person to whom this works approval has been granted, as specified at the front of this works approval. |

END OF CONDITIONS

Schedule 1: Maps

Premises map

The boundary of the prescribed premises is shown in the map below (Figure 1).

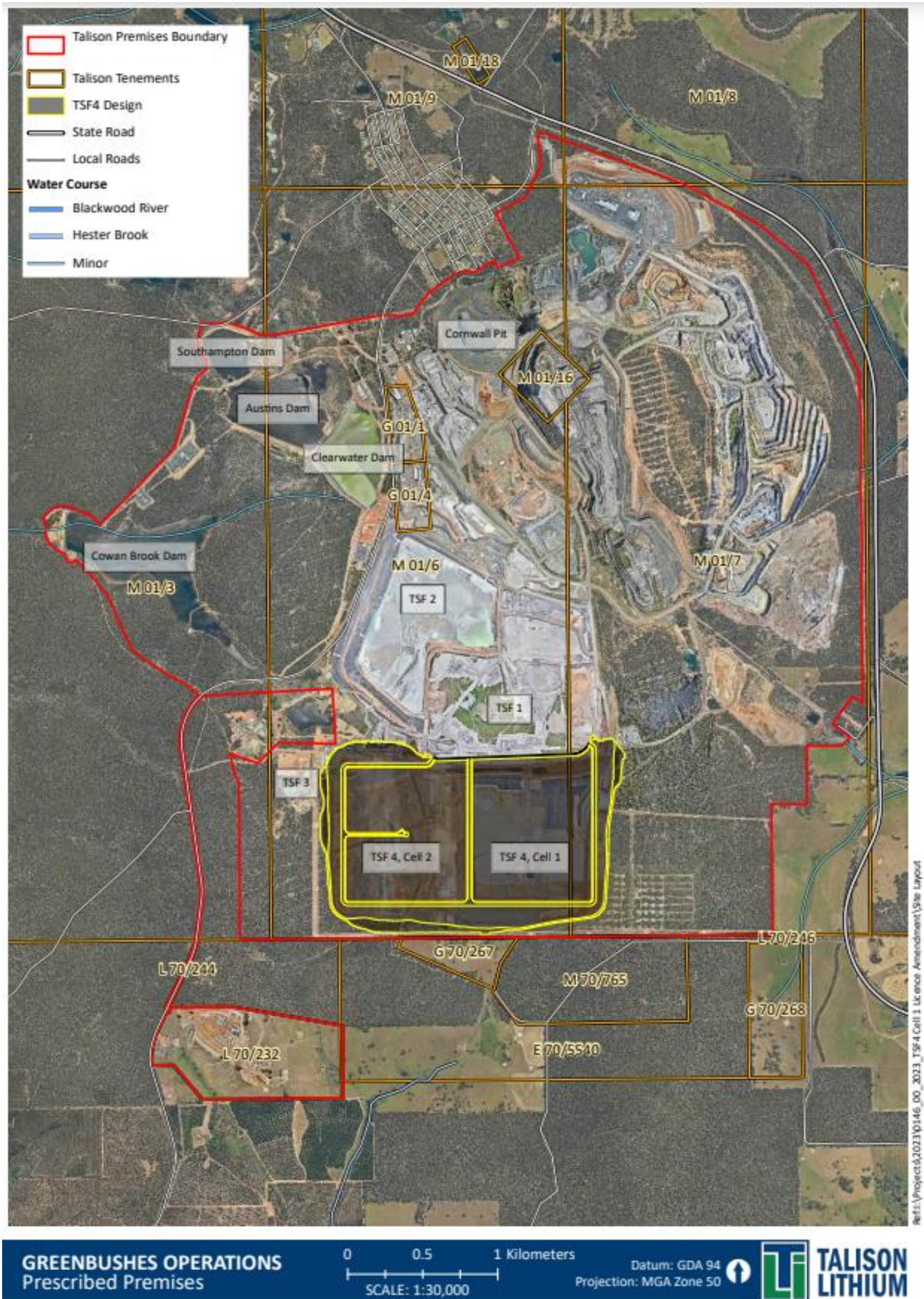


Figure 1: Map of the boundary of the prescribed premises and location of TSF4

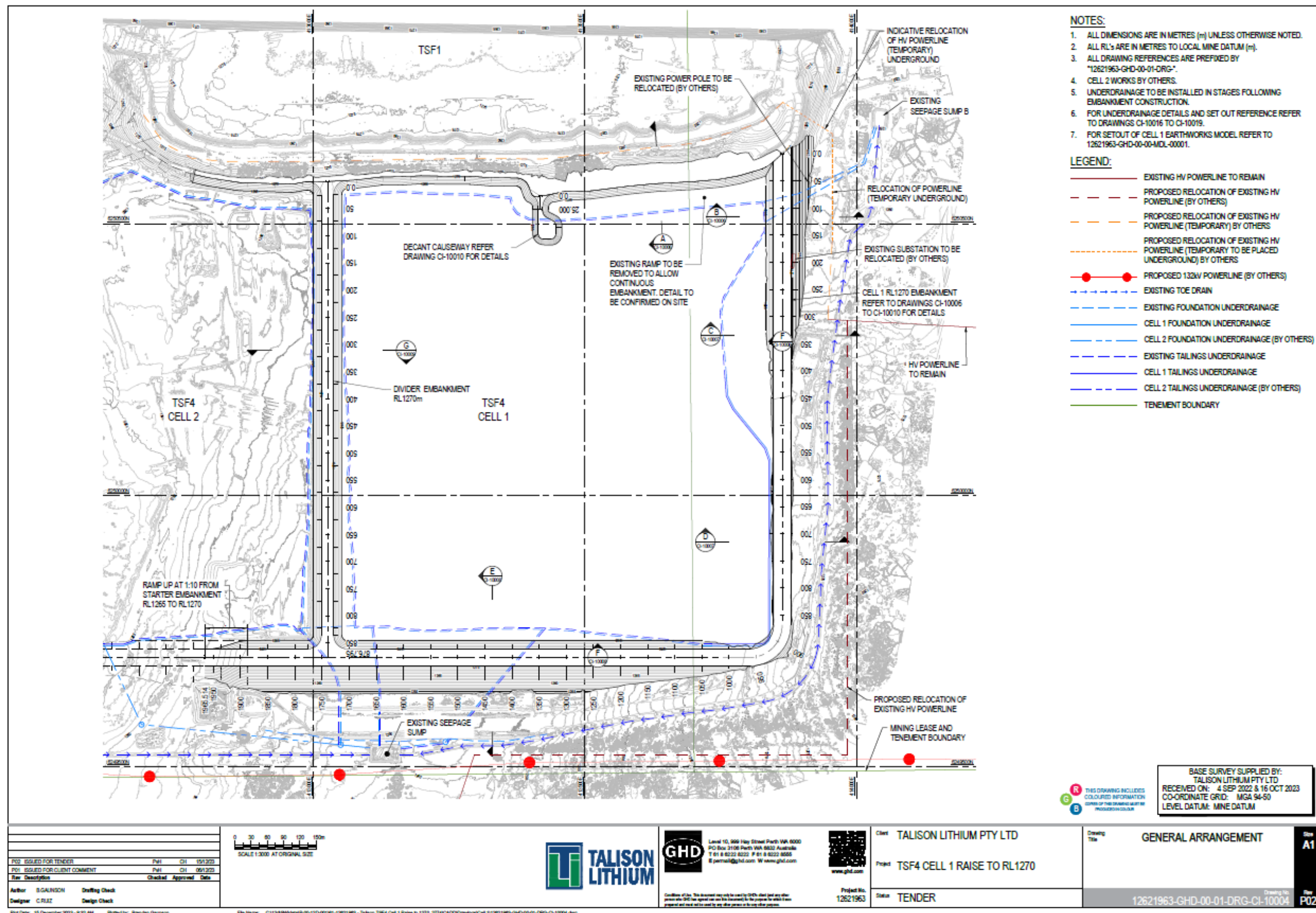


Figure 2 TSF4 cell 1 raise to 270 m AHD / 1270 m RL – general arrangement

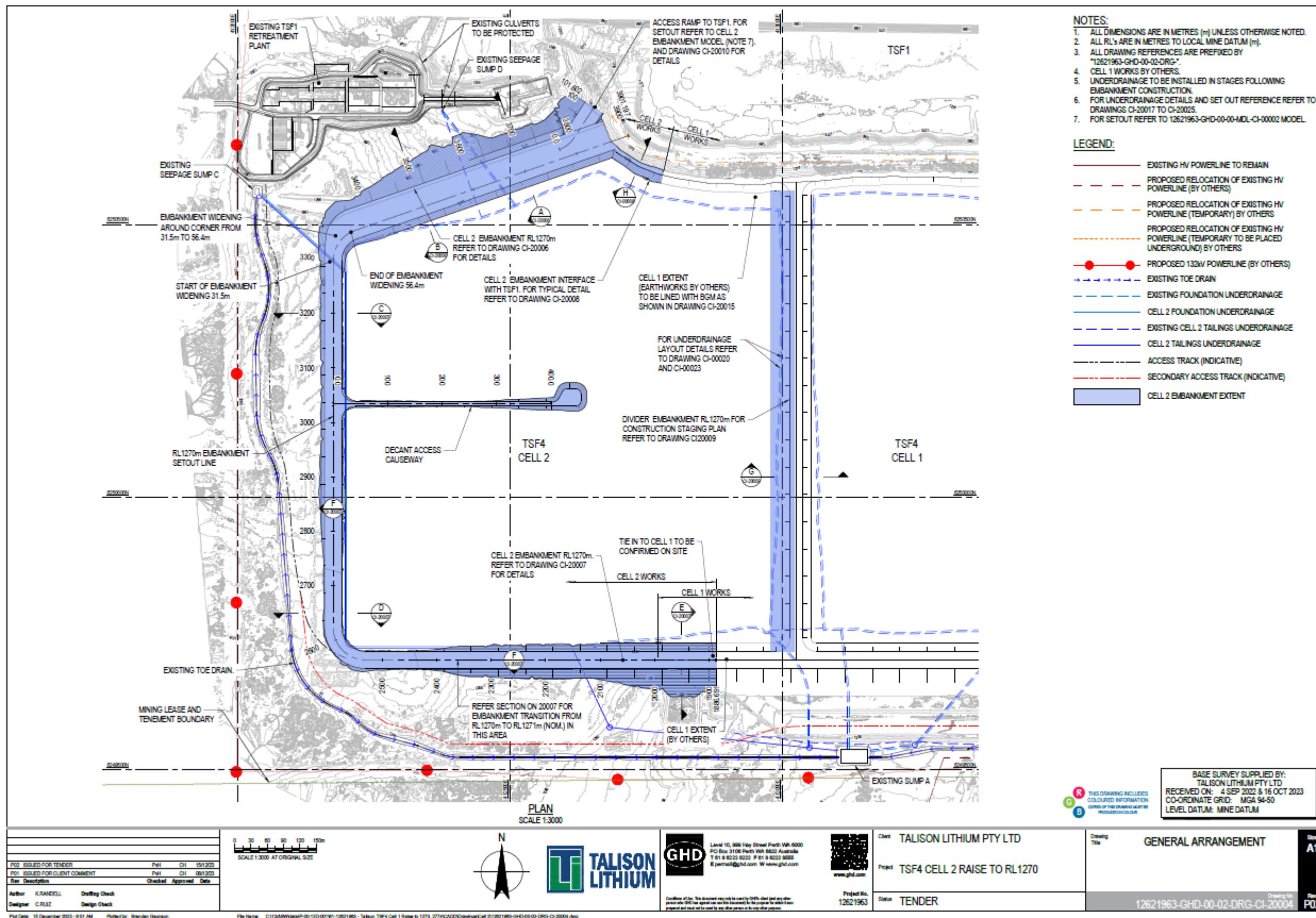


Figure 3 TSF4 cell 2 raise to 270 m AHD / 1270 m RL – general arrangement

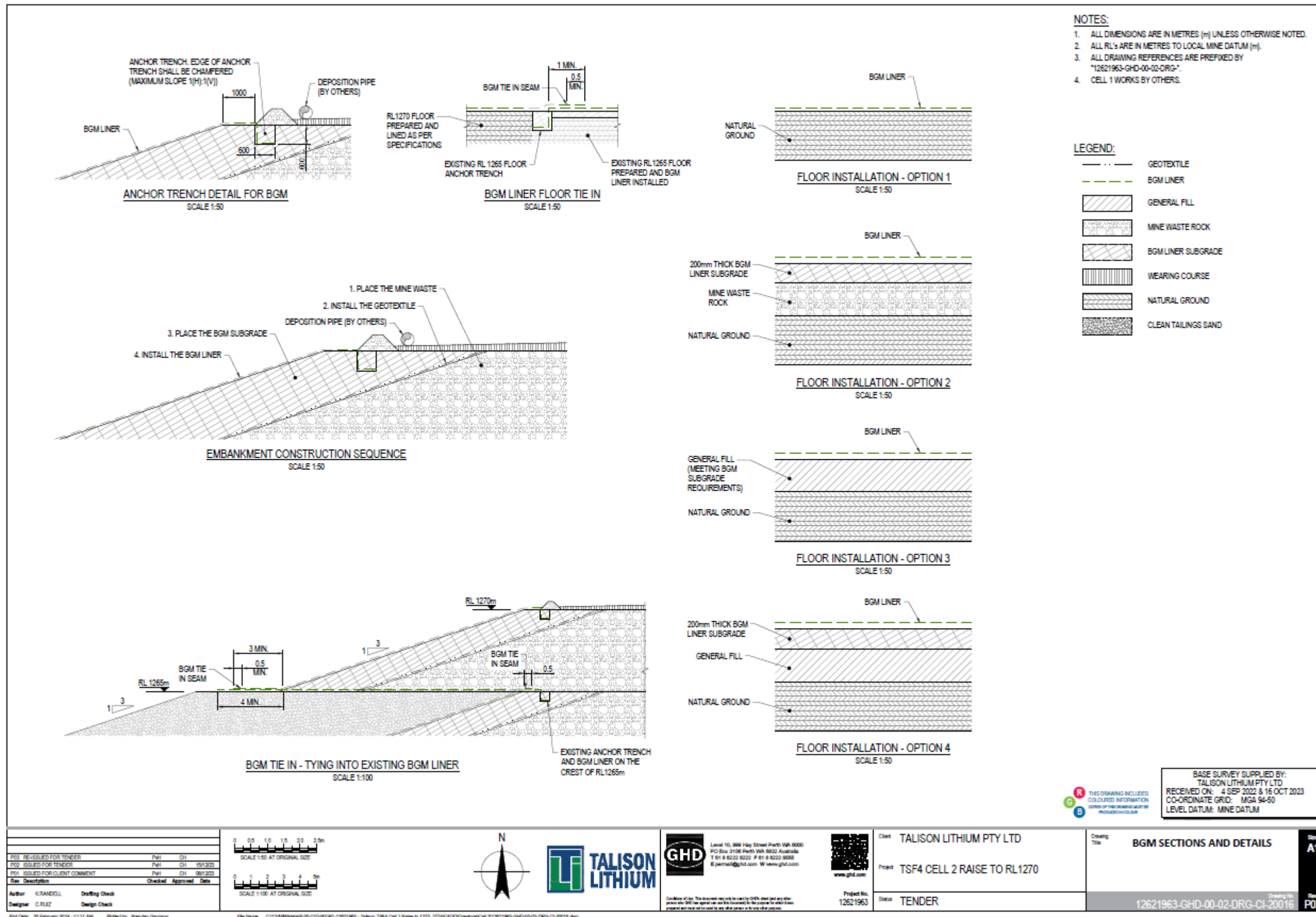


Figure 4 TSF4 embankment raise to 270 m AHD / 1270 m RL – BGM sections and details

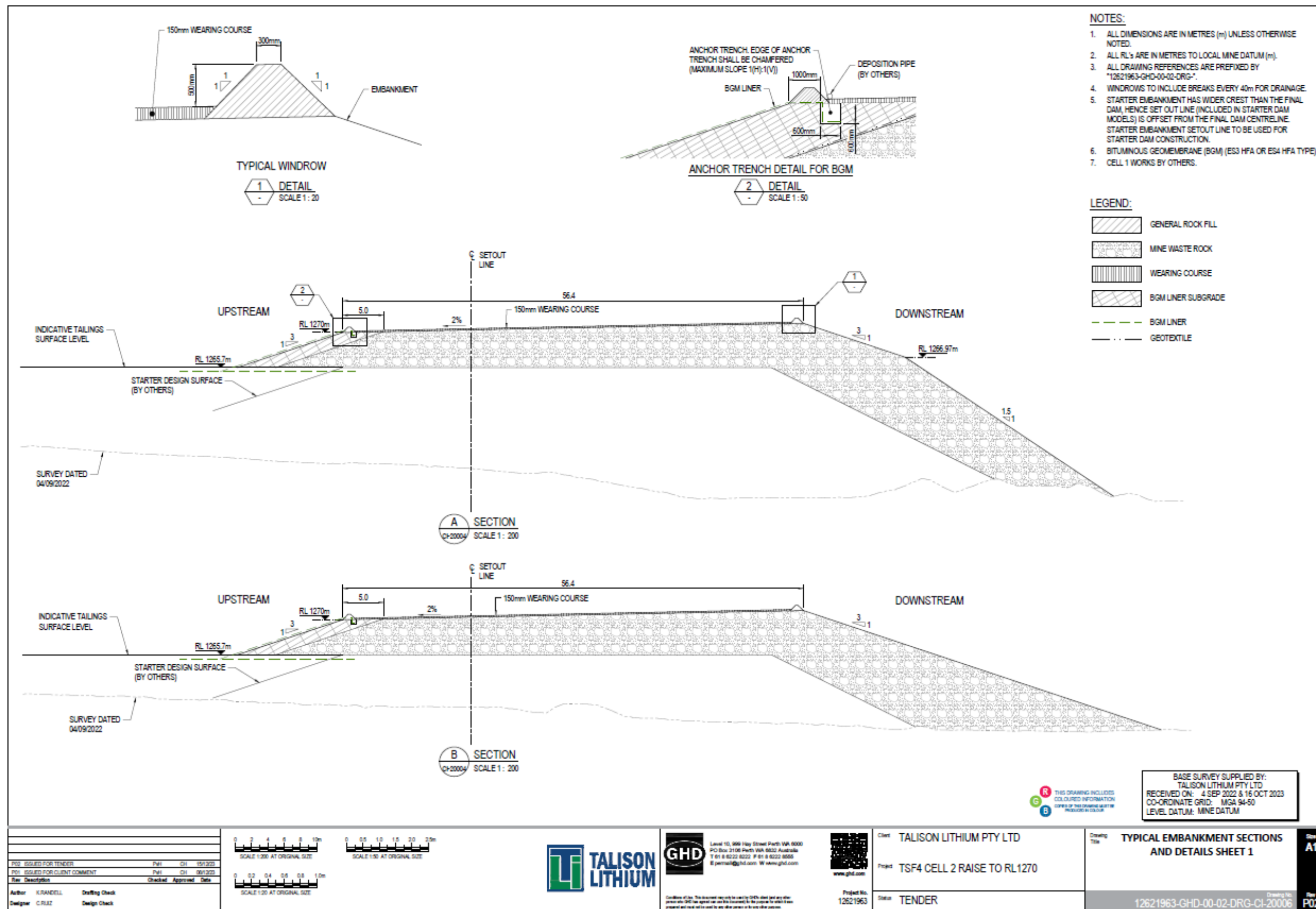
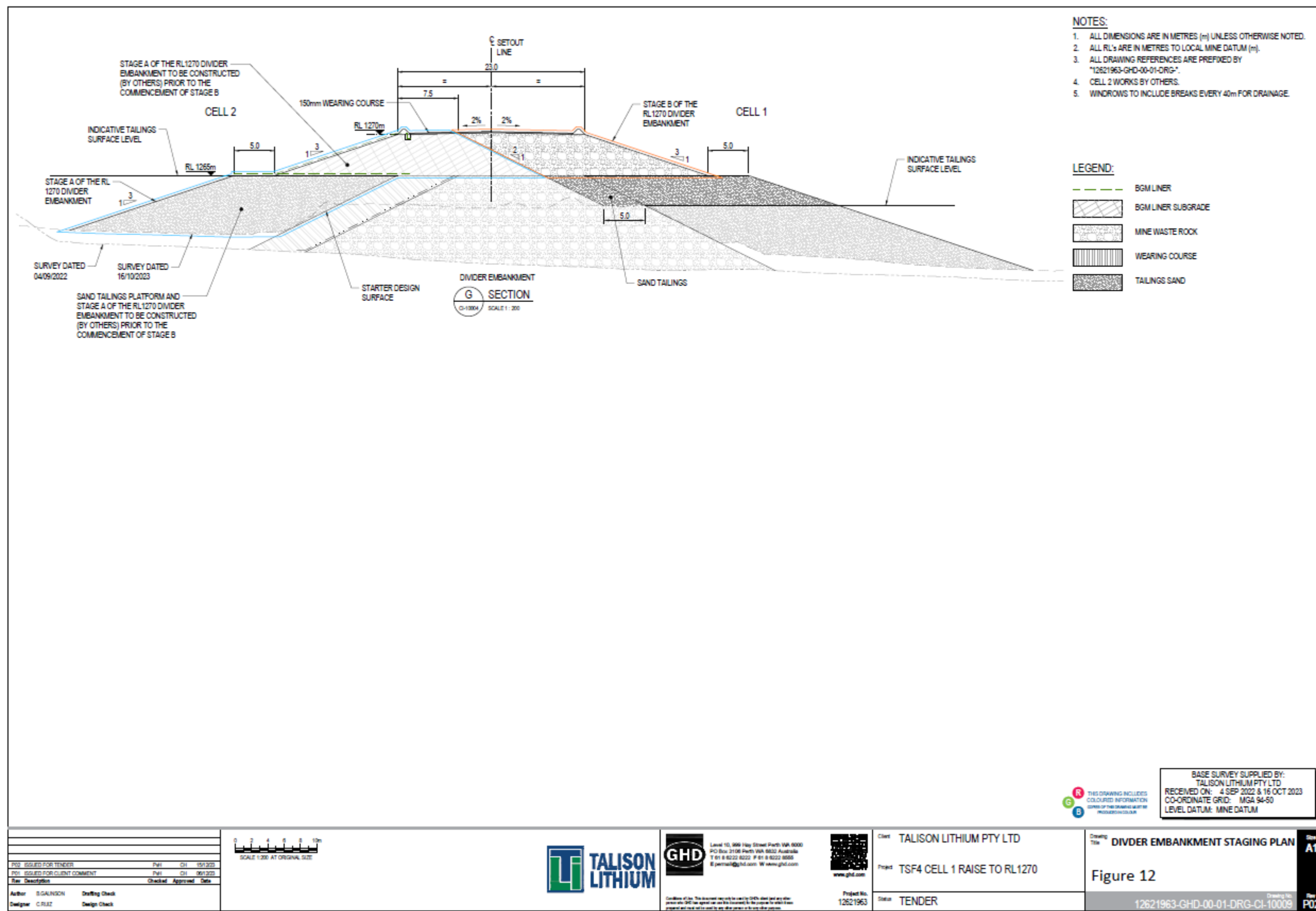


Figure 6 TSF embankment raise to 270 m AHD / 1270 m RL – typical embankment section detail - continued



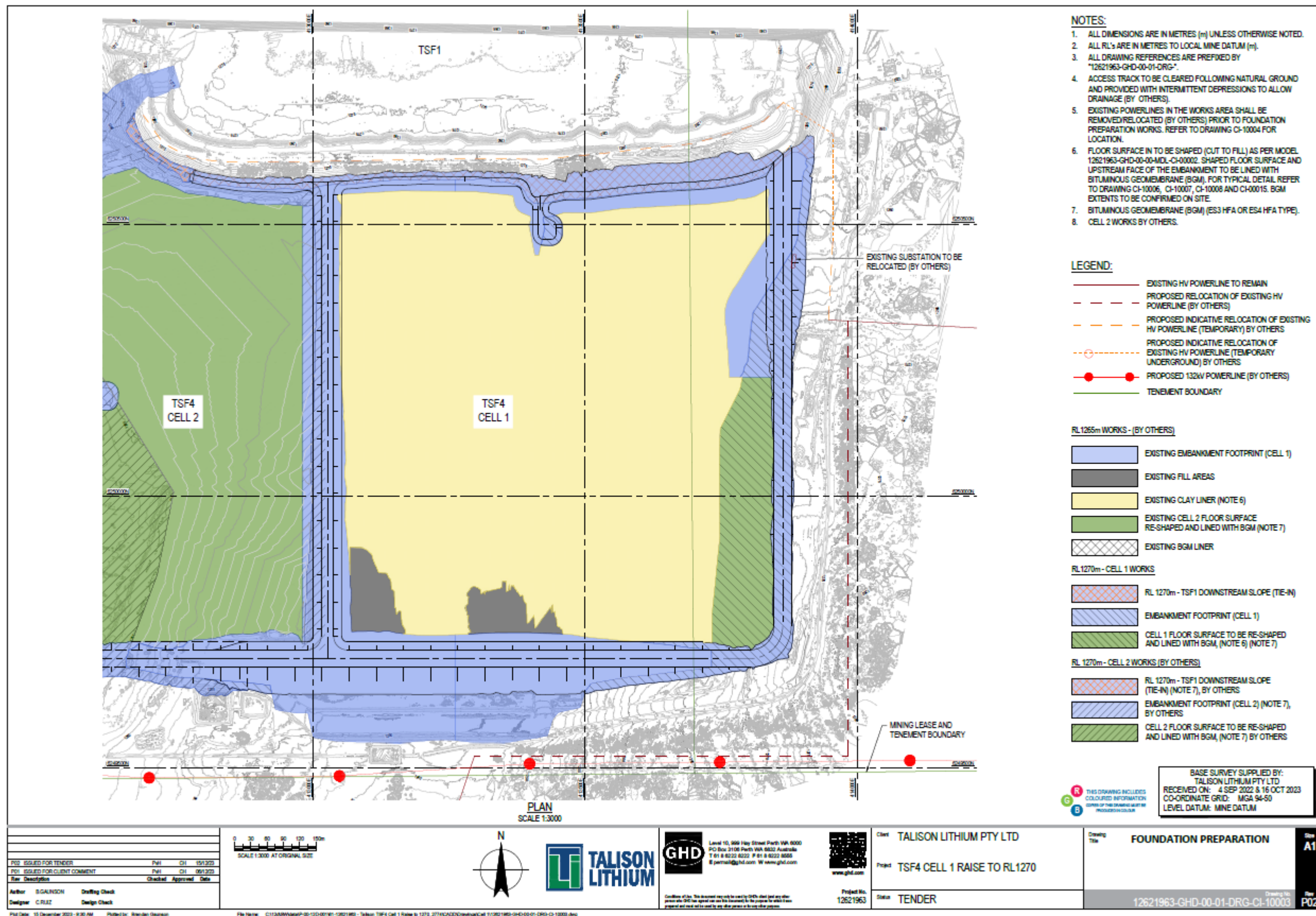







Figure 8 TSF4 cell 1 raise to 270 m AHD / 1270 m RL - foundation preparation

1. ALL DIMENSIONS ARE IN METRES (m) UNLESS OTHERWISE NOTED.
2. ALL RL's ARE IN METRES TO LOCAL MINE DATUM (m).
3. ALL DRAWING REFERENCES ARE PREFIXED BY "12621963-GHD-00-02-DRG".
4. ACCESS TRACK TO BE CLEARED FOLLOWING NATURAL GROUND AND PROVIDED WITH INTERMITTENT DEPRESSIONS TO ALLOW DRAINAGE (BY OTHERS).
5. EXISTING POWERLINES IN THE WORKS AREA SHALL BE REMOVED/RELOCATED (BY OTHERS) PRIOR TO FOUNDATION PREPARATION WORKS. REFER TO DRAWING C-20003 FOR LOCATION.
6. FLOOR SURFACE IN CELL 2 TO BE SHAPED (CUT TO FILL) AS PER MODEL 12621963-GHD-00-00-04-MDL-C1-00002. SHAPED FLOOR SURFACE AND UPSTREAM FACE OF THE EMBANKMENT TO BE LINED WITH BITUMINOUS GEOMEMBRANE (BGM). FOR TYPICAL DETAIL REFER TO DRAWING C-20015 AND C-20016. BGM EXTENTS TO BE CONFIRMED ON SITE.
7. BITUMINOUS GEOMEMBRANE (BGM) (ES3 HFA OR ES4 HFA TYPE).
8. CELL 1 WORKS BY OTHERS.

LEGEND:

-




RL1265m WORKS - (EXISTING)

- | | |
|---|--|
|  | EXISTING EMBANKMENT FOOTPRINT (RL1265) |
|  | EXISTING FILL AREAS |
|  | EXISTING CLAY LINER (NOTE 6) |
|  | EXISTING CELL 2 FLOOR SURFACE RE-SHAPED AND LINED WITH BGM (NOTE 7) |
|  | EXISTING BGM LINER |

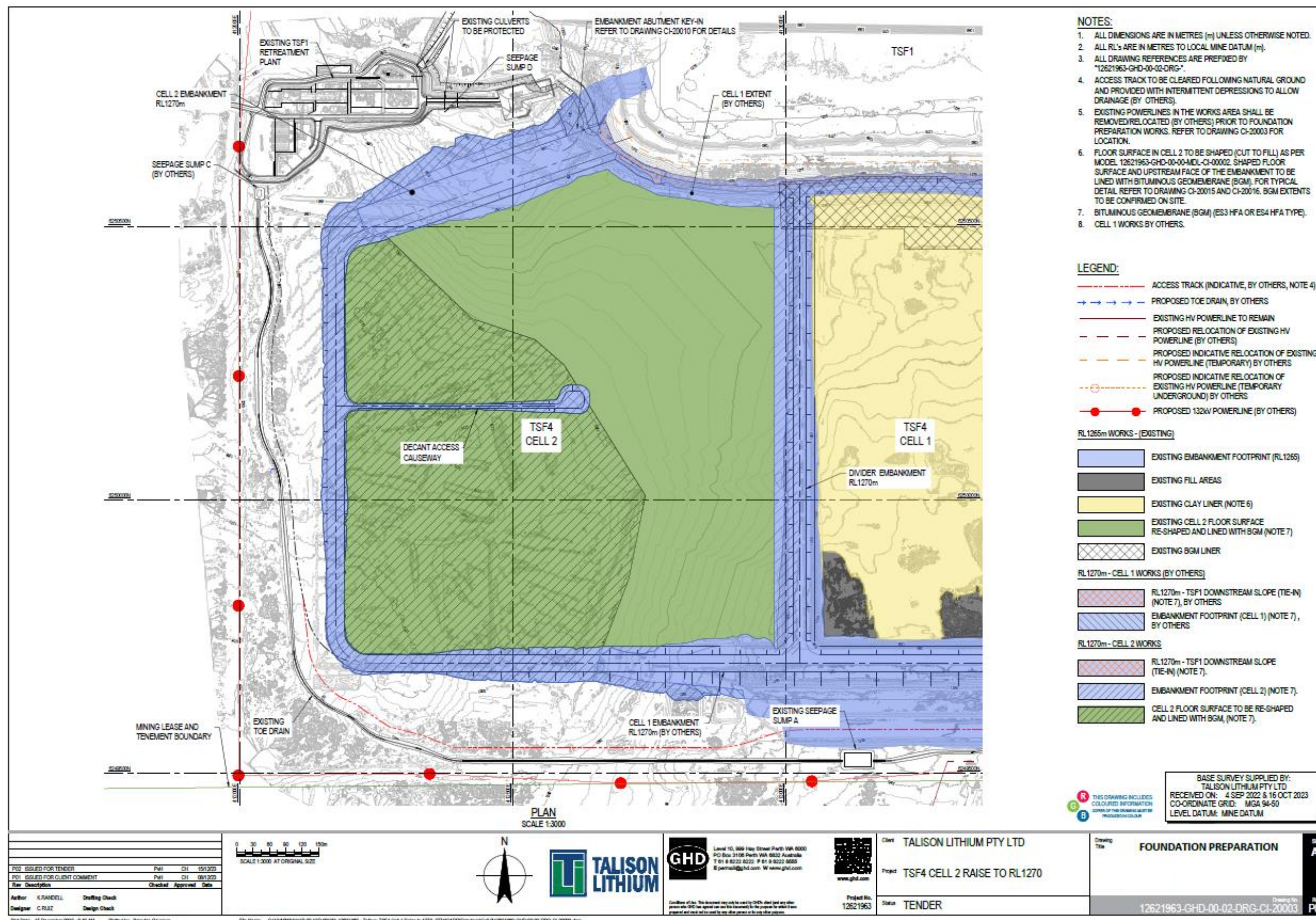
RL1270m - CELL 1 WORKS (BY OTHERS)

- RL1270m - TSF1 DOWNSTREAM SLOPE (TIE-IN)
(NOTE 7), BY OTHERS
- EMBANKMENT FOOTPRINT (CELL 1) (NOTE 7),
BY OTHERS

RL1270m - CELL 2 WORKS

- | | |
|---|--|
|  | RL1270m - TSF1 DOWNSTREAM SLOPE (TIE-IN) (NOTE 7). |
|  | EMBANKMENT FOOTPRINT (CELL 2) (NOTE 7). |
|  | CELL 2 FLOOR SURFACE TO BE RE-SHAPED AND LINED WITH BGM. (NOTE 7). |

BASE SURVEY SUPPLIED BY:
TALISON LITHIUM PTY LTD
RECEIVED ON: 4 SEP 2022 & 16 OCT 2023
CO-ORDINATE GRID: MGA 94-50
LEVEL DATUM: MINE DATUM



W6901/2024/1 Date of Amendment: 11 April 2025
IR-T05 Works approval template (v6.0) (September 2022)

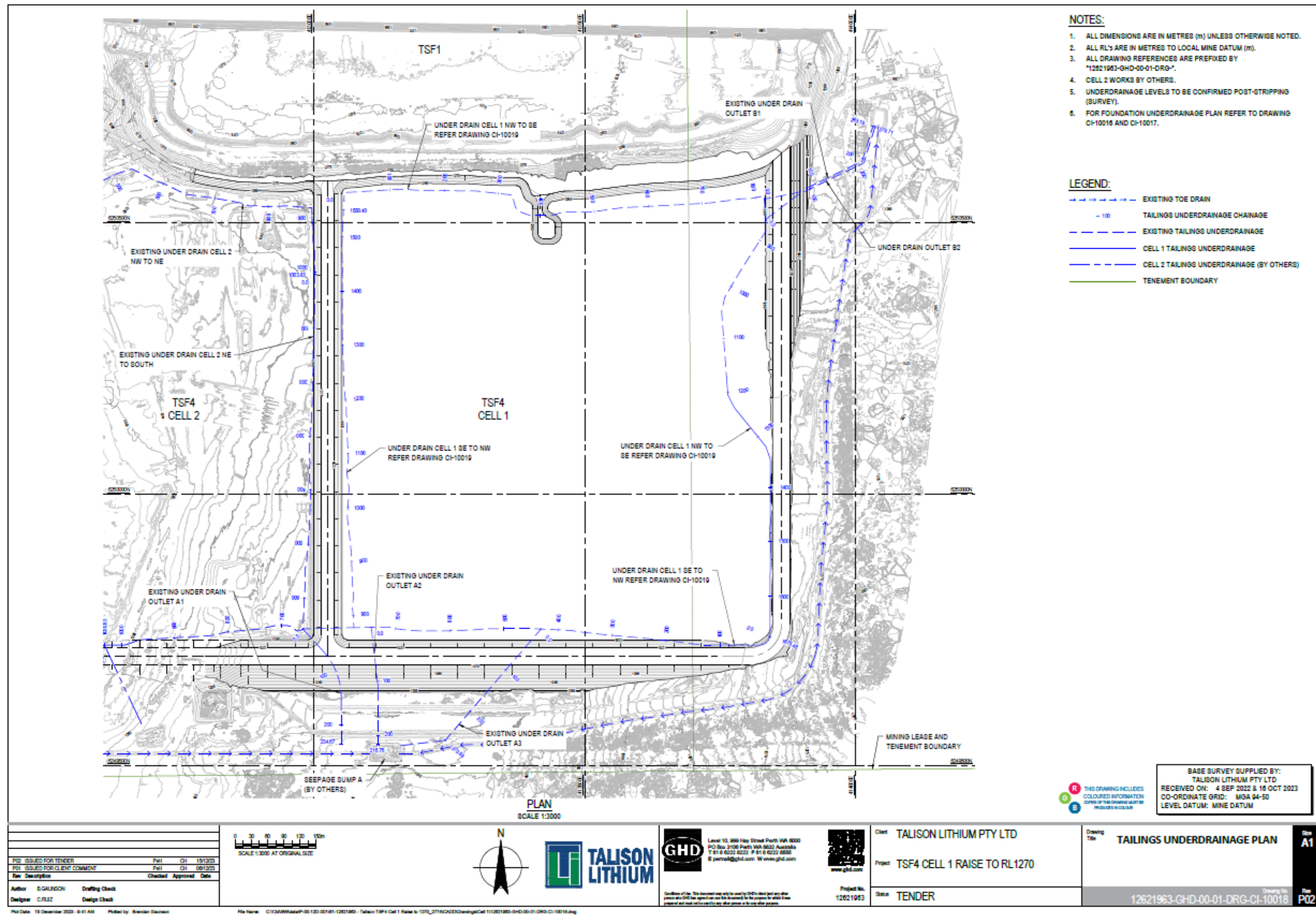


Figure 10 TSF4 cell 1 - tailings underdrainage plan

W6901/2024/1 Date of Amendment: 11 April 2025
IR-T05 Works approval template (v6.0) (September 2022)

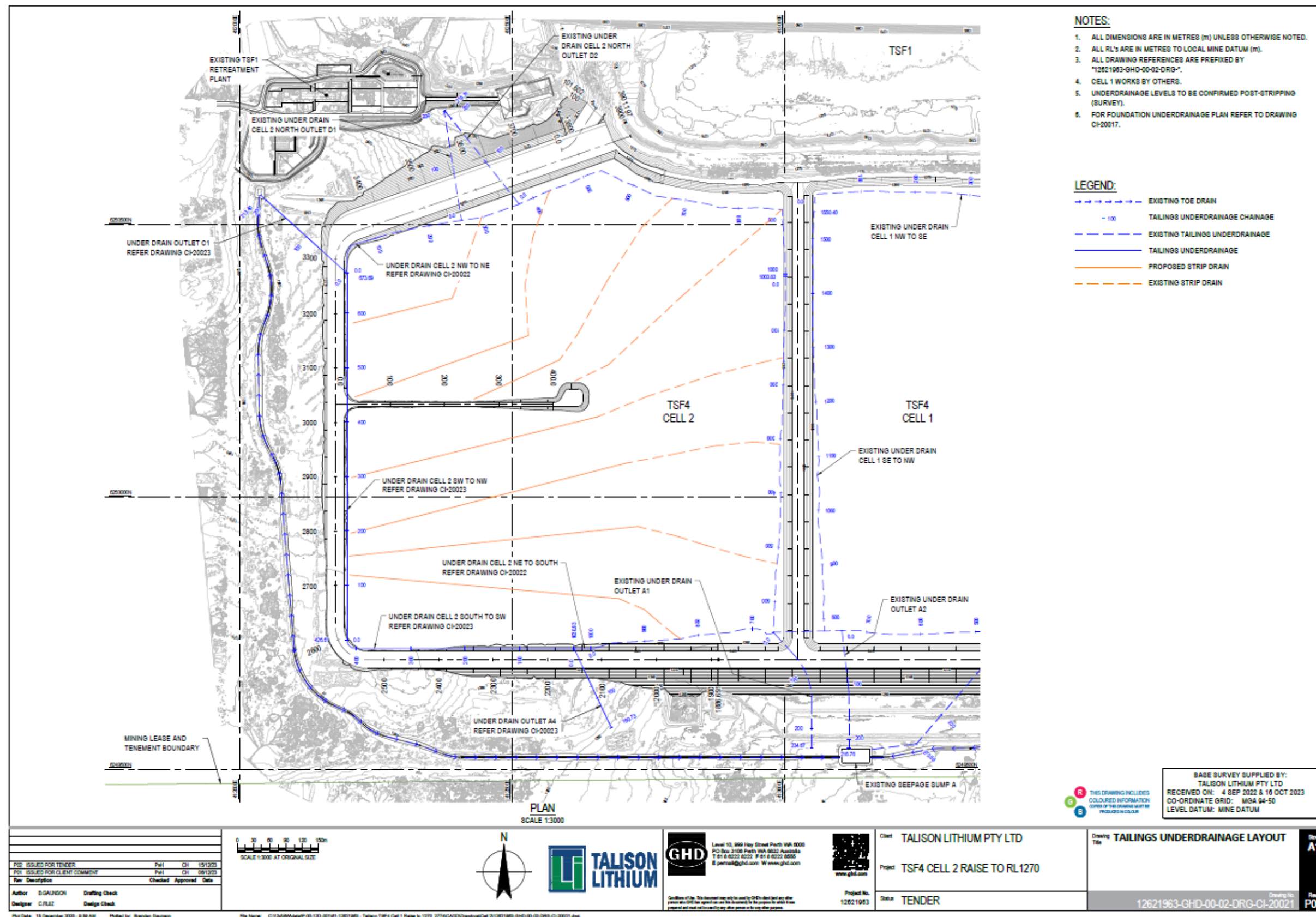


Figure 11 TSF4 cell 2 - tailings underdrainage plan

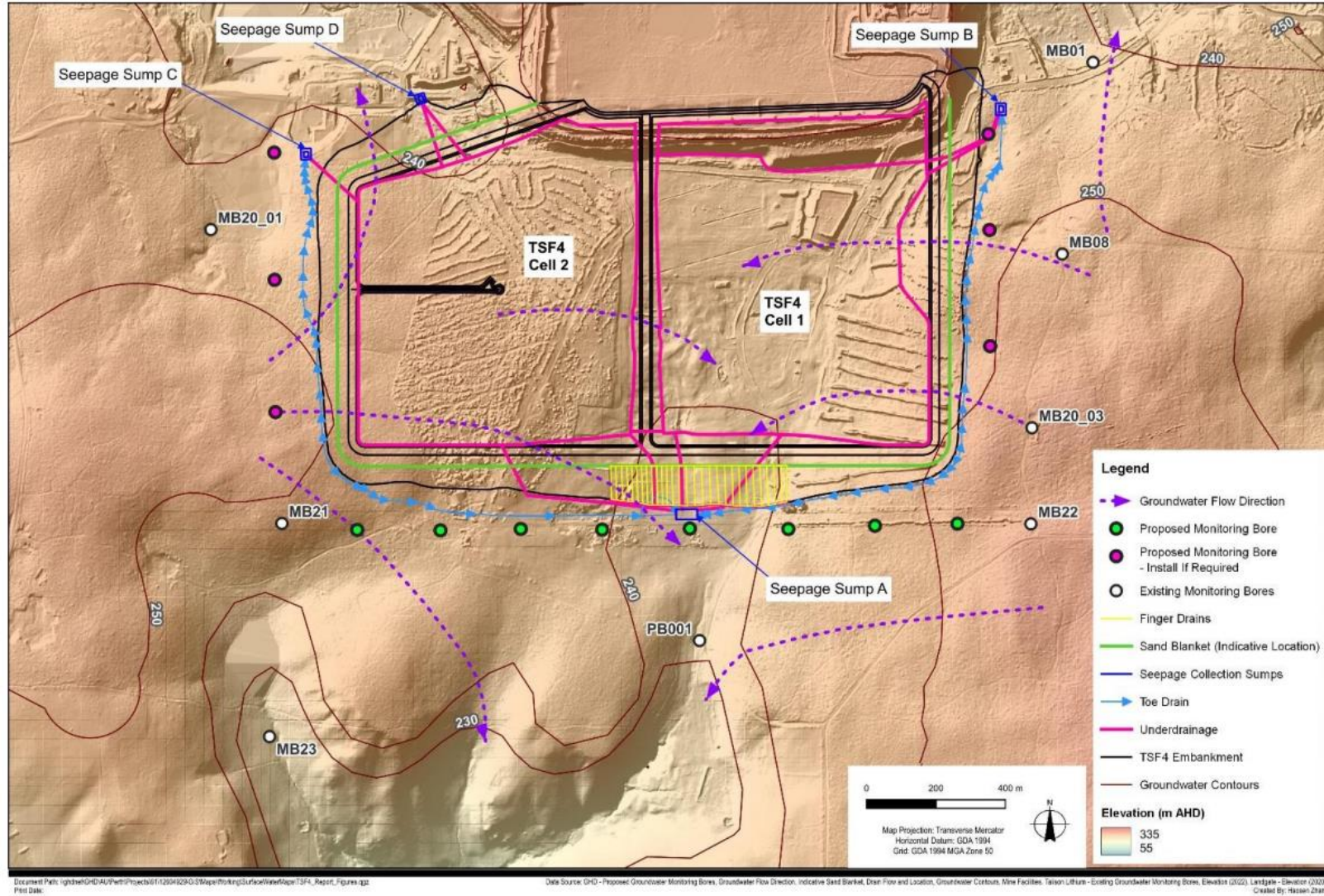


Figure 12 Seepage collection sumps and TSF4 southern perimeter monitoring bores (green)

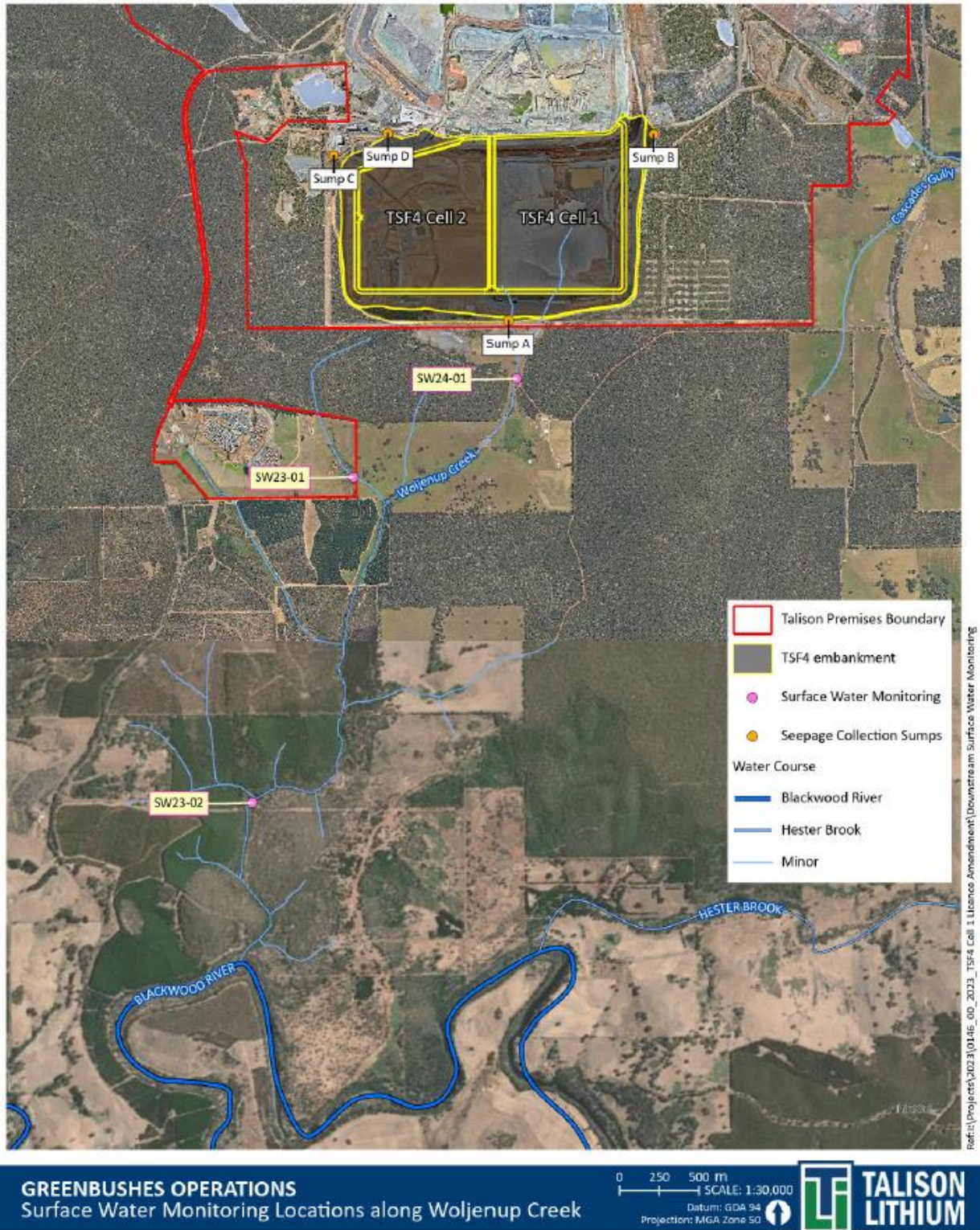


Figure 13 Surface water monitoring locations along Woljenup Creek

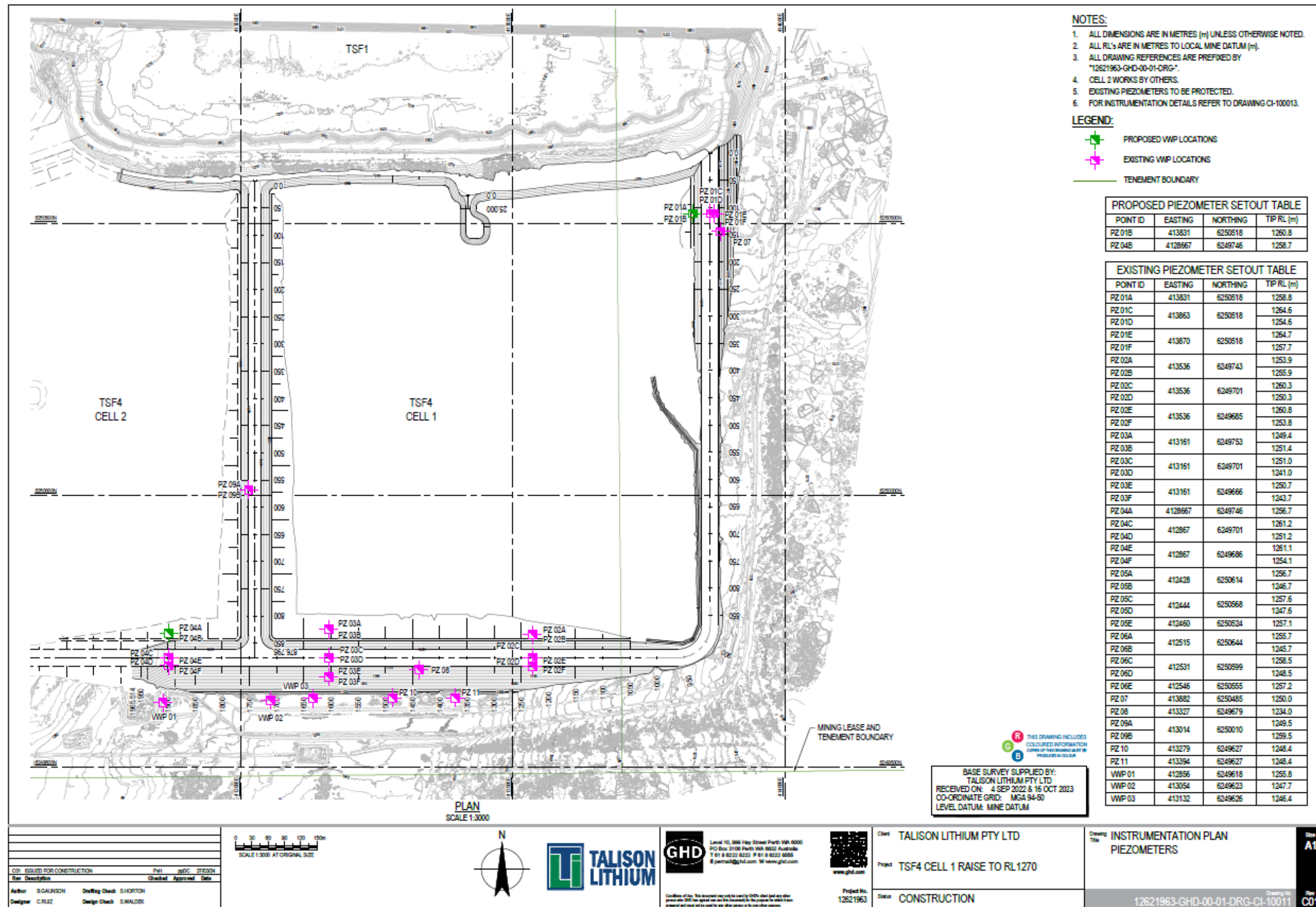


Figure 14a Location of additional piezometers – TSF4 cell 1

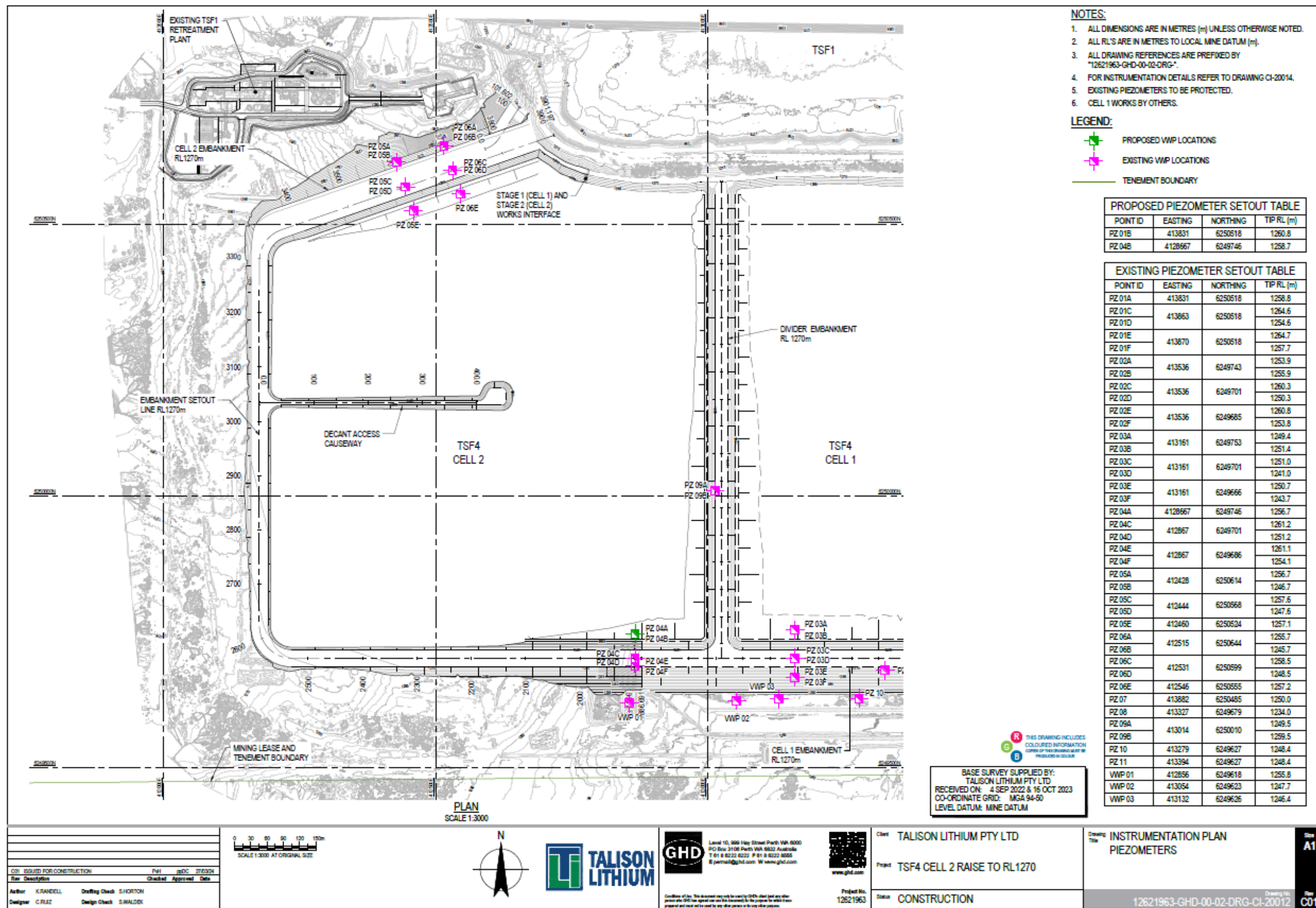


Figure 14b Location of additional piezometers – TSF4 cell 2

Schedule 2: Approximate groundwater monitoring bore locations

Table 10: Approximate groundwater monitoring TSF4 southern perimeter bore locations.

| Bore ID | Easting ¹ | Northing ¹ |
|----------|----------------------|-----------------------|
| MB24-01 | 412195 | 6249490 |
| MB24-02 | 412435 | 6249490 |
| MB24-03 | 412665 | 6249490 |
| MB24-04 | 412900 | 6249490 |
| MB24-05 | 413150 | 6249490 |
| MB24-06 | 413435 | 6249490 |
| MB24-07 | 413685 | 6249490 |
| MB24-08 | 413920 | 6249490 |
| Bore TBD | Adjacent to SW23-02 | |

Note 1: The proposed eastings and northings are approximate, small variations upon installation are considered acceptable.

Schedule 3: Monitoring quality assurance and quality control

The works approval holder must adhere to the following field quality assurance and quality control procedures, as specified in Schedule B2 of the Assessment of Site Contamination NEPM, and must include as a minimum:

- (a) decontamination procedures for the cleaning of tools and sampling equipment before sampling and between samples;
- (b) field instrument calibration for instruments used on site;
- (c) blind replicate samples and rinsate blanks must be collected in the field and sent to the primary laboratory to determine the precision of the field sampling and laboratory analytical program;
- (d) completed field monitoring sheets / sampling logs for each sample collected, showing:
 - (i) time of collection;
 - (ii) location of collection;
 - (iii) initials of sampler;
 - (iv) sampling method;
 - (v) field analysis results;
 - (vi) duplicate type / location (if relevant); and
 - (vii) site observations and weather conditions, and
- (e) chain-of-custody documentation must be completed which details the following information:
 - (i) site identification;
 - (ii) the sampler;
 - (iii) nature of the sample;
 - (iv) collection time and date;
 - (v) analyses to be performed;
 - (vi) sample preservation method;
 - (vii) departure time from site;
 - (viii) dispatch courier(s); and
 - (ix) arrival time at the laboratory.

Schedule 4: Premises boundary coordinates

The corners of the premises boundary are the coordinates listed in Table 11.

Table 11: Premises boundary coordinates (GDA 2020)

| FID | Easting | Northing |
|-----|------------|-------------|
| 0. | 413491.59 | 6254845.816 |
| 1. | 414589.84 | 6254424.02 |
| 2. | 415386.979 | 6253739.349 |
| 3. | 415623.625 | 6253239.313 |
| 4. | 415645.049 | 6251043.491 |
| 5. | 415447.687 | 6250904.2 |
| 6. | 415511.281 | 6250760.711 |
| 7. | 415275.172 | 6250377.694 |
| 8. | 415036.708 | 6250371.745 |
| 9. | 415043.108 | 6249501.967 |
| 10. | 411429.115 | 6250689.456 |
| 11. | 412131.343 | 6250772.47 |
| 12. | 412110.652 | 6251139.098 |
| 13. | 411221.446 | 6251092.478 |
| 14. | 410779.837 | 6251389.092 |
| 15. | 410470.423 | 6251931.474 |
| 16. | 410225.13 | 6252109.5 |
| 17. | 410372.18 | 6252342.973 |
| 18. | 410563.136 | 6252230.453 |
| 19. | 411058.602 | 6252738.228 |
| 20. | 411213.329 | 6253421.756 |
| 21. | 411233.882 | 6253568.967 |
| 22. | 411936.304 | 6253531.804 |
| 23. | 412611.334 | 6253627.527 |

| | | |
|-----|-------------|-------------|
| 24. | 413053.423 | 6253910.213 |
| 25. | 413357.474 | 6254005.136 |
| 26. | 413200.022 | 6254301.164 |
| 27. | 411212.84 | 6249453.56 |
| 28. | 411180.65 | 6249355.38 |
| 29. | 411022.46 | 6249000 |
| 30. | 410989.85 | 6249000 |
| 31. | 411161.93 | 6249362.84 |
| 32. | 411193.12 | 6249457.95 |
| 33. | 411253.478 | 6249789.305 |
| 34. | 411233.2145 | 6249788.975 |
| 35. | 411111.4364 | 6250771.212 |
| 36. | 411091.3706 | 6250770.007 |
| 37. | 411447.549 | 6249022.973 |
| 38. | 412177.2882 | 6248896.396 |
| 39. | 412181.1117 | 6248415.739 |
| 40. | 411246.193 | 6248406.33 |
| 41. | 410907.2836 | 6248633.759 |
| 42. | 411496.5304 | 6249473.76 |
| 43. | 411755.3315 | 6250783.767 |
| 44. | 411613.6532 | 6250645.728 |