



Works approval number W6244/2019/1

Works approval holder Paddington Gold Pty Ltd
ACN 008 585 886

Registered business address Level 1, Viskovich House
377 Hannan Street
KALGOORLIE WA 6430

DWER file number DER2020/001042-3~95

Duration 01/08/2019 to 31/07/2024

Date of issue 4 January 2021

Premises details Level 1, Viskovich House
377 Hannan Street
KALGOORLIE WA 6430

Mining tenements:
M24/564, M24/565, M324/616, M27/185 and
L24/231

As depicted in Schedule 1

Prescribed premises category description (Schedule 1, <i>Environmental Protection Regulations 1987</i>)	Assessed production / design capacity
Category 6: Mine dewatering	4,000,000kL per year

This works approval is granted to the works approval holder, subject to the attached conditions, on 4 January 2021, by:

Terrel MacGregor

A/MANAGER – RESOURCE INDUSTRIES

an officer delegated under section 20 of the *Environmental Protection Act 1986* (WA)

Works approval history

Date	Reference number	Summary of changes
1/08/2019	W6244/2019/1	Works approval granted.
4/01/2021	W6244/2019/1	Amendment to construct additional pipeline and modify locations of currently approved pipelines (this amendment)

Interpretation

In this works approval:

- (a) the words 'including', 'includes' and 'include' in conditions mean "including but not limited to", and similar, as appropriate;
- (b) where any word or phrase is given a defined meaning, any other part of speech or other grammatical form of that word or phrase has a corresponding meaning;
- (c) where tables are used in a condition, each row in a table constitutes a separate condition;
- (d) any reference to an Australian or other standard, guideline, or code of practice in this works approval:
 - (i) if dated, refers to that particular version; and
 - (ii) if not dated, refers to the latest version and therefore may be subject to change over time;
- (e) unless specified otherwise, any reference to a section of an Act refers to that section of the EP Act; and
- (f) unless specified otherwise, all definitions are in accordance with the EP Act.

NOTE: This works approval requires specific conditions to be met but does not provide any implied authorisation for other emissions, discharges, or activities not specified in this works approval.

Works approval conditions

The works approval holder must ensure that the following conditions are complied with:

Infrastructure and equipment

1. The works approval holder must install and undertake the works for the infrastructure and equipment:
 - (a) specified in column 1;
 - (b) to the requirements specified in column 2; and
 - (c) at the location specified in column 3of Table 1 below.
2. Within 28 days of the completion of the works specified in column 2 of Table 1, the works approval holder must provide to the CEO an Environmental Compliance Report.
3. The works approval holder must ensure the report required by condition 2 includes, but is not limited to, the following:
 - (a) certification by a qualified professional engineer that each item of infrastructure or component of infrastructure specified in column 1 of Table 1 has been constructed with no material defects and to the requirements specified in column 2 of Table 1;
 - (b) be signed by a person authorised to represent the works approval holder and contains the printed name and position of that person within the company; and
 - (c) submitted for each stage of dewatering pipeline construction as specified in condition 4.

Table 1: Infrastructure and equipment requirements table

Column 1	Column 2	Column 3
Infrastructure/ Equipment	Requirements (design and construction)	Site plan reference
Dewatering pipelines (Stages 2 to 4)	<ul style="list-style-type: none">• 110 and 315 NB single weld pipeline and to be laid within v-drains. Required to meet the following standards: <ul style="list-style-type: none">• AS/NZS 2033:3008: Installation of polyethylene pipe systems;• AS/NZS 4129:2008: Fittings for polyethylene (PE) pipes for pressure applications;• AS/NZS 4130:2009 Polyethylene (PE) pipes for pressure applications; and• AS/NZS 4131:2010: Polyethylene (PE) compounds for pressure pipes and fittings	Pipeline route to be located as shown in Premises Map in Schedule 1

Column 1	Column 2	Column 3
Infrastructure/ Equipment	Requirements (design and construction)	Site plan reference
Scour pits	Scour pits are to be constructed along the pipeline route at strategic locations and low points. The v-drains and scour pits in combination must have sufficient capacity to completely contain any spills from pipeline leakage or breach for a period equal to the time between routine inspections. The Works Approval Holder must provide evidence of such capacity within the Environmental Compliance Report as required by condition 2.	Not depicted

4. The works approval holder is authorised to construct dewatering pipelines in stages as specified in Table 2 and in the locations indicated in Figure 2, Schedule 1.

Table 2. Dewatering pipeline stages

Stage	Segment	Site plan reference
Stage 2	Havana pit to Jakarta pit	Pipeline route to be located as shown in Figure 2, Schedule 1
Stage 3	Jakarta pit to Federal south pit	
Stage 4	Federal south pit to Mulgarrie pit (two pipelines)	

Commissioning phase

5. The works approval holder must conduct Commissioning for each stage of the dewatering pipelines listed in condition 4 for a period not exceeding one month.
6. The works approval holder must notify the CEO within 7 days after, the completion of date of Commissioning.
7. The works approval holder must provide to the CEO a Commissioning Report within one month of the completion date of Commissioning.
8. The works approval holder must ensure the report required by condition 7 of this Works Approval includes:
 - (a) A summary of the commissioning activities undertaken, including timeframes;
 - (b) Any discharges which occur
 - (c) A summary of any accidents or malfunctions which may have occurred
 - (d) A summary of process monitoring results obtained under condition 12

Time limited operational phase

9. Upon completion of commissioning and the submission of the Environmental Compliance Report in accordance with conditions 2 and 3, the works approval holder may conduct full dewatering operations for a period not exceeding six months from the completion date of Commissioning, or until a Licence for the operation is updated, whichever comes first.

Discharge of mine dewater

10. During the time limited operational phase, the works approval holder must implement the controls specified in column 1 of Table 4 and column 2 of Table 4.

Table 4: Mine dewater discharge table

Column 1	Column 2
Site infrastructure and equipment	Operational controls
All receiving pits including: Havana pit Mulgarrie pit Jakarta pit Federal North/South pits	<ul style="list-style-type: none">• A minimum vertical freeboard of 6 m must be maintained below the lower crest level at all times.• Must be inspected monthly (whilst operating) for freeboard capacity.• A written log is required to be maintained for each inspection signed by the responsible person.
HDPE dewatering pipelines	<ul style="list-style-type: none">• An inspection is required for visual integrity and leak detection each 12 hourly shift. The inspections are to be at least 6 hours, and no more than 18 hours, apart.• A written log is required to be maintained for each inspection, with the record of each inspection signed by the responsible person.
V-drains and scour pits	<ul style="list-style-type: none">• A 12 hourly inspection is required for visual integrity of the drains and scour pits• A written log is required to be maintained for each inspection, with the record of each inspection signed by the responsible person.

Monitoring general

11. The works approval holder must ensure that:
- (a) All water samples are collected and preserved in accordance with AS/NZS 5667.1;
 - (b) Monthly monitoring is undertaken at least 15 days apart; and
 - (c) All monitoring equipment used on the Premises to comply with the conditions of this works approval is calibrated in accordance with the manufacturer's specifications.

Process monitoring

12. During the time limited operational phase, the works approval holder must monitor the parameters specified in column 2 of Table 5, from the locations specified in

column 1 of Table 5. Parameters must be monitored in the units specified in column 3, and at the frequency specified in column 4.

Table 5: Mine dewater process monitoring

Column 1	Column 2	Column 3	Column 4
Location ¹ as defined in Figure 2	Parameter	Units	Frequency
Havana pit	Volumetric flow rate	kL	Continuous
Mulgarrie pit	Standing water level	metres below pit crest level	Monthly
Jakarta pit			
Federal North/South pits	pH ²	-	Monthly
	Total dissolved solids ¹	mg/L	Monthly

Note 1: Where the location is in existence and has been connected to the works in condition 1.

Note 2: In-field non-NATA accredited analysis permitted.

Record-keeping

13. The works approval holder must maintain accurate books including information, reports and data in relation to the works and the books must:
 - (a) be legible;
 - (b) if amended, be amended in such a way that the original and subsequent amendments remain legible or are capable of retrieval;
 - (c) be retained for at least 3 years from the date the books were made;
 - (d) be available to be produced to an Inspector or the CEO.
14. The works approval holder must comply with a Department Request within 14 days from the date of the Department Request or such other period as agreed to by the Inspector or the CEO.

Definitions

In this works approval, the terms in Table 3 have the meanings defined.

Table 3: Definitions

Term	Definition
AS/NZS 5667.1	Means the Australian Standard AS/NZS 5667.1 <i>Water Quality – Sampling – Guidance on the design of sampling programs, sampling techniques and the preservation and handling of samples</i>
books	has the same meaning given to that term under the EP Act.
CEO	means Chief Executive Officer. CEO for the purposes of notification means: Director General Department administering the <i>Environmental Protection Act 1986</i> Locked Bag 10 Joondalup DC WA 6919 info@dwer.wa.gov.au
Department	means the department established under section 35 of the <i>Public Sector Management Act 1994</i> and designated as responsible for the administration of Part V Division 3 of the EP Act.
Department Request	means a request for Books or other sources of information to be produced, made by an Inspector or the CEO to the Works Approval Holder in writing and sent to the Works Approval's address for notifications, as described at the front of this Works Approval, in relation to: (a) compliance with the EP Act or this Works Approval; (b) the Books or other sources of information maintained in accordance with this Works Approval; or (c) the Books or other sources of information relating to Emissions from the Premises.
discharge	has the same meaning given to that term under the EP Act.
emission	has the same meaning given to that term under the EP Act.
environmental commissioning	means the sequence of activities to be undertaken to test equipment integrity and operation, or to determine the environmental performance, of equipment and infrastructure to establish or test a steady state operation and confirm design specifications.
Environmental Commissioning Report	means a report on any commissioning activities that have taken place and a demonstration that they have concluded, with focus on emissions and discharges, waste containment, and other environmental factors.

Term	Definition
Environmental Compliance Report	means a report to satisfy the CEO that the conditioned infrastructure and/or equipment has been constructed and/or installed in accordance with the works approval.
EP Act	<i>Environmental Protection Act 1986 (WA).</i>
EP Regulations	<i>Environmental Protection Regulations 1987 (WA).</i>
premises	the premises to which this licence applies, as specified at the front of this licence and as shown on the premises map (Figure 1) in Schedule 1 to this works approval.
prescribed premises	has the same meaning given to that term under the EP Act.
qualified professional engineer	As recognised by an Australian professional group or organisation to be competent in the duties required of an engineer.
time limited operations	refers to the operation of the infrastructure and equipment identified under this works approval that is authorised for that purpose, subject to the relevant conditions.
waste	has the same meaning given to that term under the EP Act.
works approval	refers to this document, which evidences the grant of the works approval by the CEO under section 54 of the EP Act, subject to the conditions.
works approval holder	refers to the occupier of the premises being the person to whom this works approval has been granted, as specified at the front of this works approval.

END OF CONDITIONS

Schedule 1: Maps

Premises map

The boundary of the prescribed premises is shown in the map below (Figure 1)

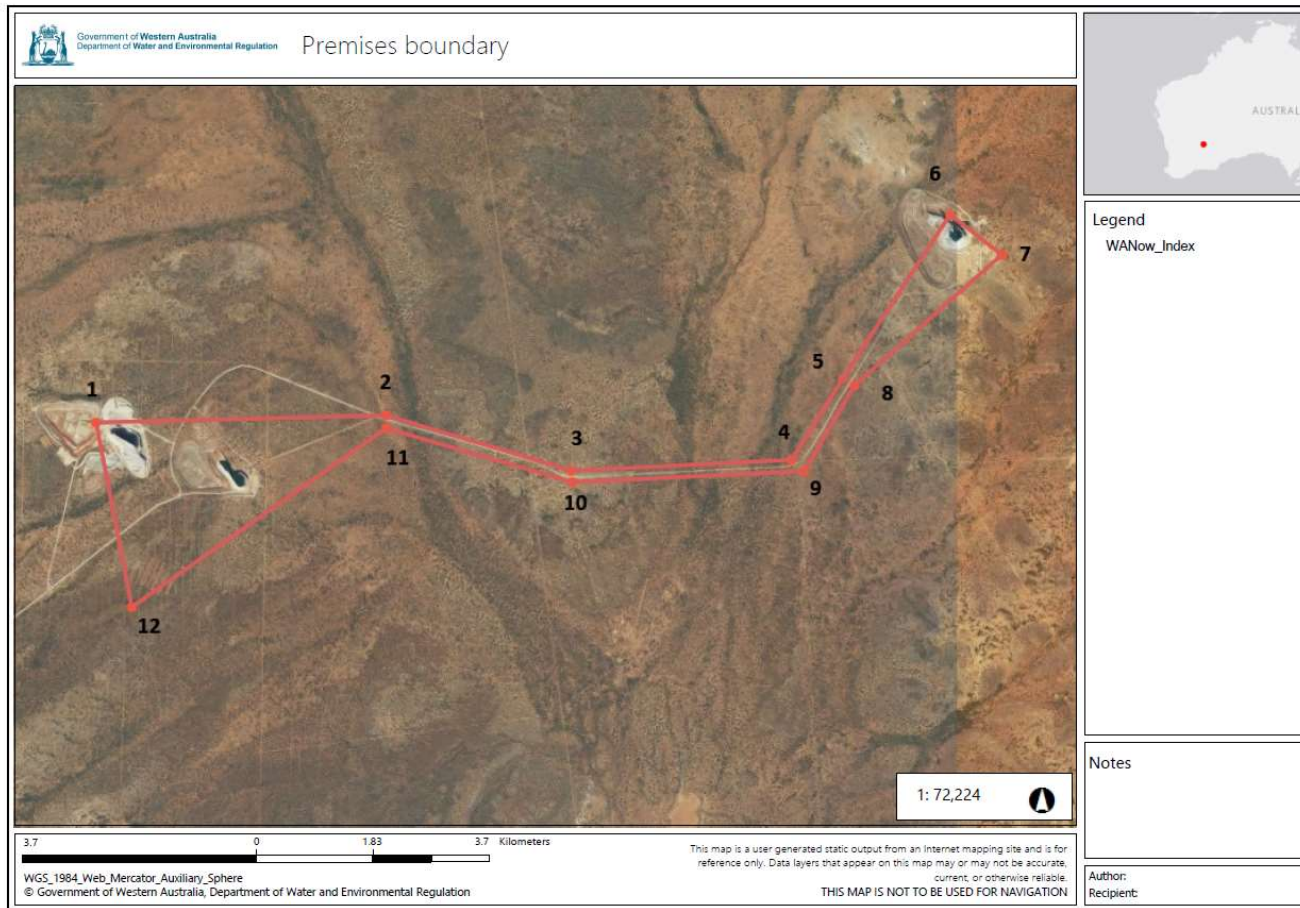


Figure 1 Prescribed premises boundary

[W6244/2019/1](#)

IR-T05 Works approval template (v5.0) (February 2020)

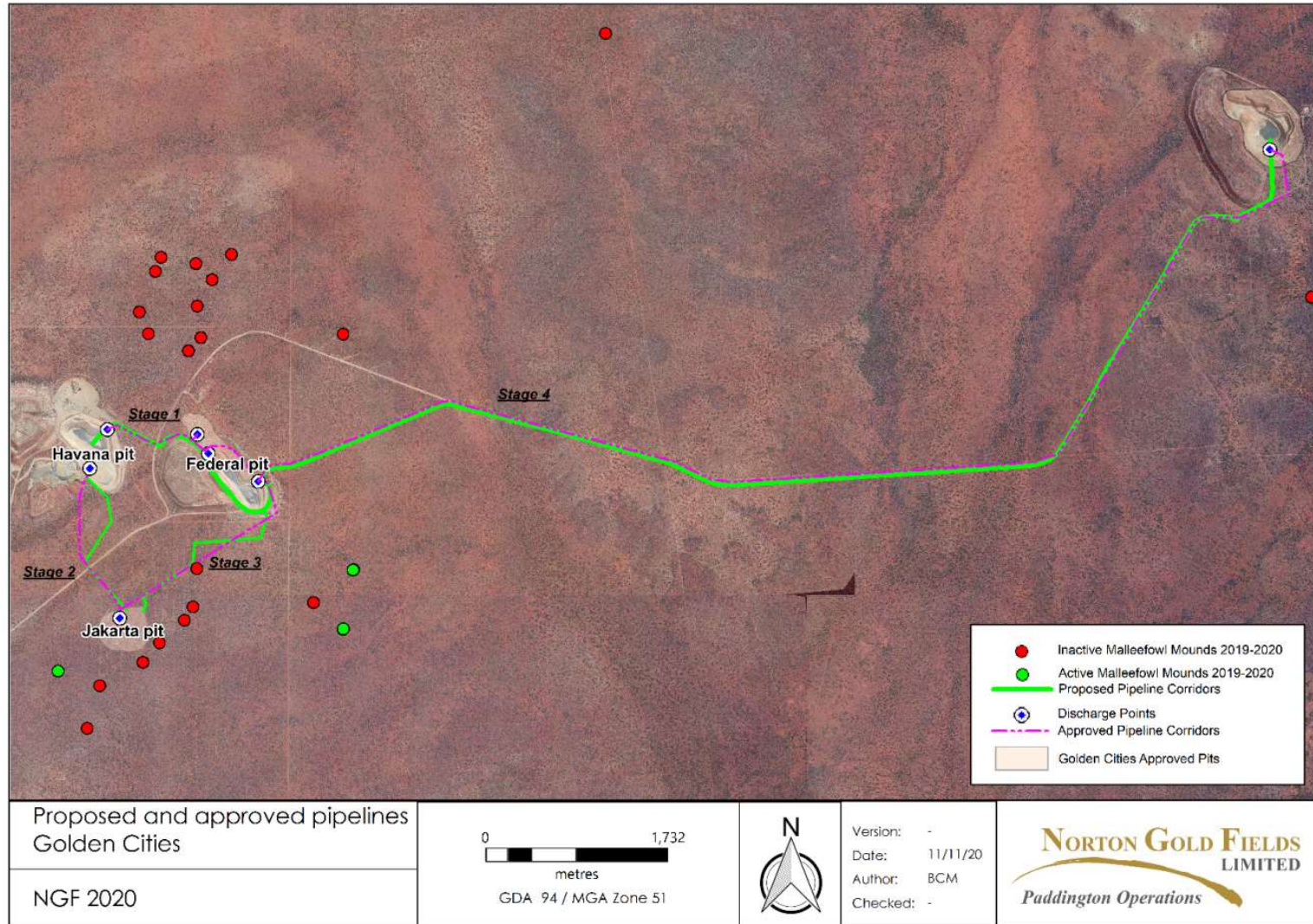


Figure 2 Proposed pipeline locations (staged construction). Modifications to stages 2-3 and new proposed pipeline (this amendment) stage 4

W6244/2019/1

IR-T05 Works approval template (v5.0) (February 2020)

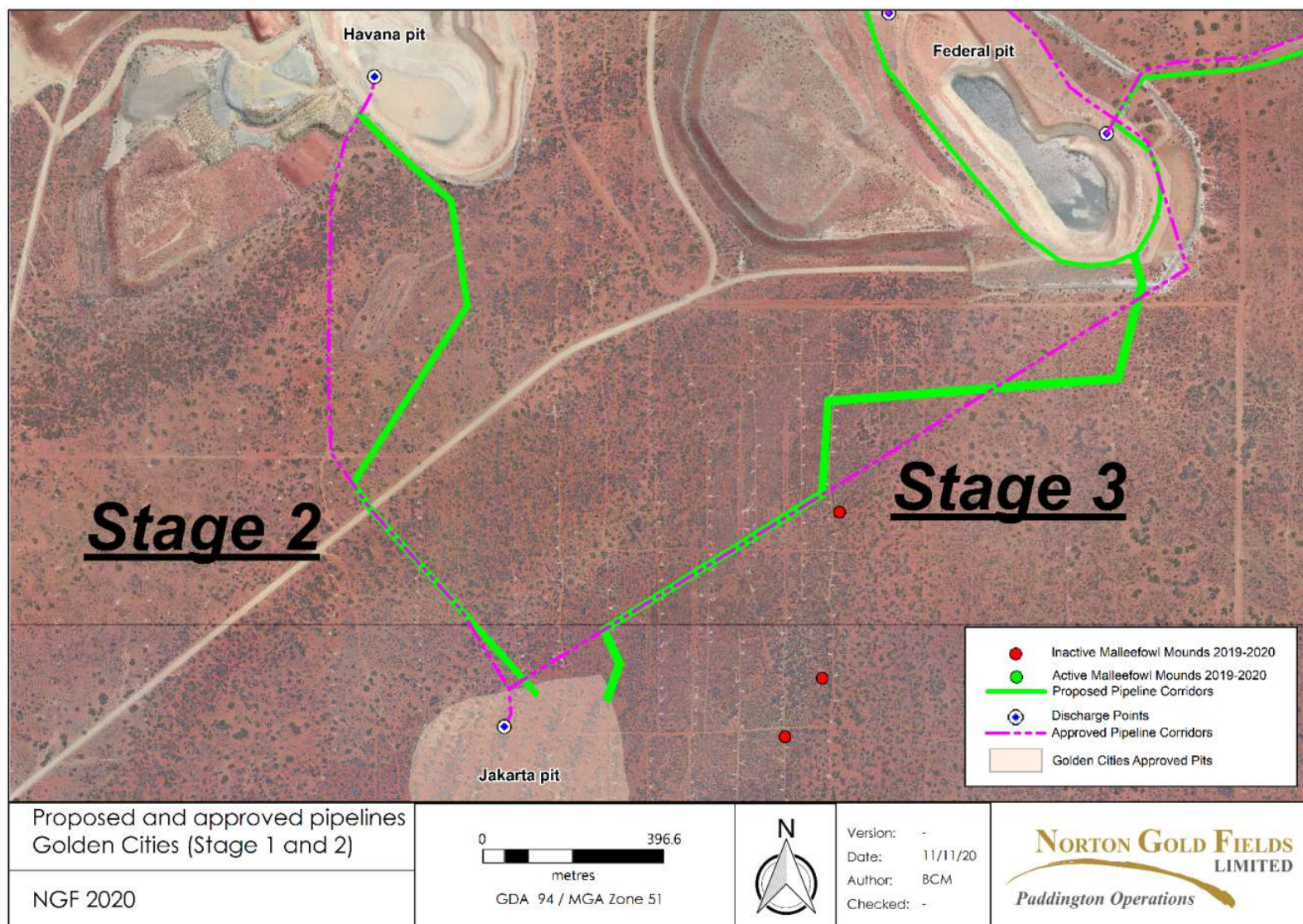


Figure 3 Modification to locations of stages 2 and 3

W6244/2019/1

IR-T05 Works approval template (v5.0) (February 2020)

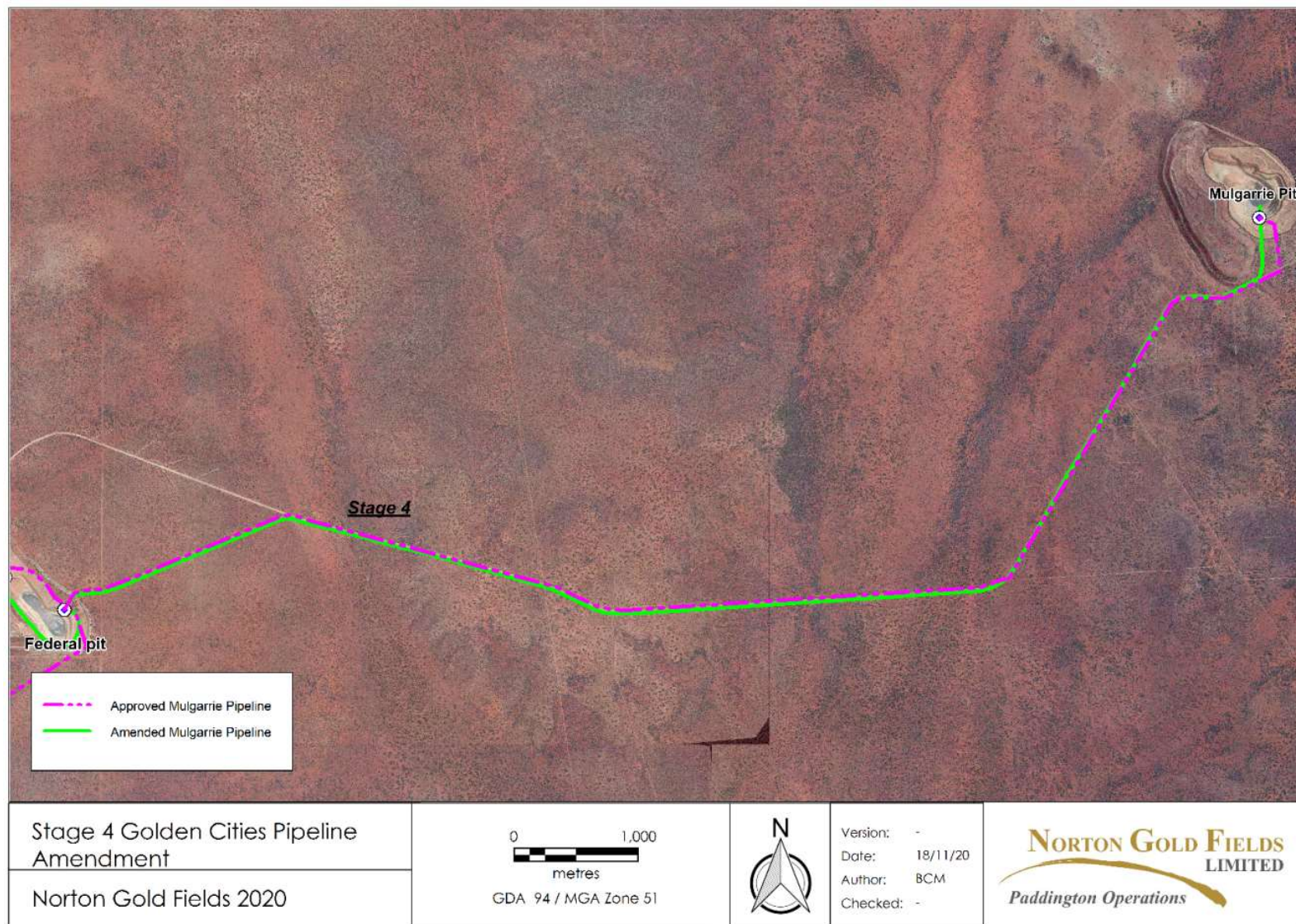


Figure 4 Proposed new pipeline (stage 4)

[W6244/2019/1](#)

IR-T05 Works approval template (v5.0) (February 2020)

Schedule 2: Premises boundary

The premises boundary is defined by the coordinates in Table 4 and Figure 1.

Table 4: Premises boundary coordinates (GDA94)

Point (Figure 1)	Lat °S	Lon °E
1	30.40633	121.39390
2	30.40545	121.43476
3	30.41218	121.46086
4	30.41087	121.49188
5	30.40100	121.49907
6	30.38106	121.51422
7	30.38593	121.52150
8	30.40182	121.50078
9	30.41225	121.49363
10	30.41358	121.46104
11	30.40703	121.43477
12	30.42875	121.39892