



Works approval number	W6432/2020/1
Works approval holder	Evolution Mining (Mungari) Pty Ltd
ACN	002 124 745
Registered business address	Level 24, 175 Liverpool Street SYDNEY NSW 2000
DWER file number	DER2020/000362
Duration	10/12/2020 to 9/12/2025
Date of issue	10/12/2020
Premises details	Mungari Gold Mine (Cutters Ridge Project) Kundana Road Kalgoorlie WA 6430 Legal description - Part of Tenements M15/1827, M15/829, M15/830, M15/1287, L15/387 and E15/965 A depicted in Schedule 1

Prescribed premises category description (Schedule 1, <i>Environmental Protection Regulations 1987</i>)	Assessed design capacity
Category 6: Mine dewatering - premises on which water is extracted and discharged into the environment to allow mining of ore.	500,000 tonnes per year

This works approval is granted to the works approval holder, subject to the attached conditions, on 10 December 2020, by:

**A/MANAGER, RESOURCE INDUSTRIES
REGULATORY SERVICES**

an officer delegated under section 20 of the *Environmental Protection Act 1986* (WA)

Interpretation

In this works approval:

- (a) the words 'including', 'includes' and 'include' in conditions mean "including but not limited to", and similar, as appropriate;
- (b) where any word or phrase is given a defined meaning, any other part of speech or other grammatical form of that word or phrase has a corresponding meaning;
- (c) where tables are used in a condition, each row in a table constitutes a separate condition;
- (d) any reference to an Australian or other standard, guideline, or code of practice in this works approval:
 - (i) if dated, refers to that particular version; and
 - (ii) if not dated, refers to the latest version and therefore may be subject to change over time;
- (e) unless specified otherwise, any reference to a section of an Act refers to that section of the EP Act; and
- (f) unless specified otherwise, all definitions are in accordance with the EP Act.

NOTE: This works approval requires specific conditions to be met but does not provide any implied authorisation for other emissions, discharges, or activities not specified in this works approval.

Works approval conditions

The works approval holder must ensure that the following conditions are complied with:

Construction phase

Infrastructure and equipment

1. The works approval holder must:
 - (a) construct the infrastructure;
 - (b) in accordance with the corresponding design and construction requirements; and
 - (c) at the corresponding infrastructure location, as set out in Table 1.

Table 1: Design and construction requirements

	Infrastructure	Design and construction requirements	Infrastructure location
1.	Dewatering pipelines from the Cutters Ridge mining are to White Foil Dam	110mm or 250mm High Density Polyethylene (HDPE) that meets: <ul style="list-style-type: none">• AS/NZS 2033:2008: Installation of polyethylene pipe systems;• AS/NZS 4129:2008 Fittings for polyethylene (PE) pipes for pressure applications;• AS/NZS 4130:2009 Polyethylene (PE) pipes for pressure applications; and• AS/NZS 4131:2010 Polyethylene (PE) compounds for pressure pipes and fittings. Must be contained within an earthen bund.	Approximately as shown in the Figure 1 of Schedule 1. Pipeline alignment may vary slightly. Only one of the two alternative routes shown within White Foil Pit to be constructed.
2.	Earthen bund	Capacity of bund and scour pits (if constructed) to be sufficient to contain a spill for a period equal to the time between routine inspections.	
3.	Scour pits	To be constructed after commencement of dewatering, only if flow rates warrant it as per assessment required by row 2 of Table 2, in condition 6.	Low points along pipeline route

Compliance reporting

2. The works approval holder must within 30 calendar days of an item of infrastructure required by condition 1 being constructed:
 - (a) undertake an audit of their compliance with the requirements of condition 1; and
 - (b) prepare and submit to the CEO an Environmental Compliance Report on that compliance.

3. The Environmental Compliance Report required by condition 2, must include as a minimum the following:
 - (a) certification by a Civil Engineer that the items of infrastructure or component(s) thereof, as specified in condition 1, have been constructed in accordance with the relevant requirements specified in condition 1;
 - (b) as constructed plans and a detailed site plan for each item of infrastructure or component of infrastructure specified in condition 1; and
 - (c) be signed by a person authorised to represent the works approval holder and contains the printed name and position of that person.

Time limited operations phase

Commencement and duration

4. The works approval holder may only commence time limited operations for an item of infrastructure identified in condition 1 where the Environmental Compliance Report as required by condition 2 has been submitted by the works approval holder for that item of infrastructure.
5. The works approval holder may conduct time limited operations for an item of infrastructure specified in condition 6 (as applicable):
 - (a) for a period not exceeding 180 calendar days from the day the works approval holder meets the requirements of condition 4 for that item of infrastructure; or
 - (b) until such time as a licence for that item of infrastructure is granted in accordance with Part V of the *Environmental Protection Act 1986*.

Time limited operations requirements

6. During time limited operations, the works approval holder must ensure that the premises infrastructure and equipment listed in Table 2 and located at the corresponding infrastructure location is maintained and operated in accordance with the corresponding operational requirement set out in Table 2.

Table 2: Infrastructure and equipment requirements during time limited operations

	Site infrastructure and equipment	Operational requirement	Infrastructure location
1.	Dewatering pipelines from the Cutters Ridge mining are to White Foil Dam	<ul style="list-style-type: none"> • Inspection for visual integrity and leak detection while dewatering is required <ul style="list-style-type: none"> ○ At least 24 hourly ○ 12 hourly, when flow rate exceeds 432kL in 24 hours • A written log is required to be maintained for each inspection, with the record of each inspection signed by the responsible person. 	Approximately as shown in the Figure 1 of Schedule 1. Pipeline alignment may vary slightly. Only one of the two alternative routes shown within White Foil Pit to be constructed.
2.	Earthen bund	Capacity of bund (including scour pits if constructed) to be maintained sufficient to contain a spill for a period equal to the time between routine inspections. If flows of 10L/s (864kL per day) are	

	Site infrastructure and equipment	Operational requirement	Infrastructure location
		maintained for one week consistently, inspections the bund capacity must be reassessed and scour pits installed at appropriate low points alongside the road if needed.	

7. During time limited operations, the works approval holder must ensure that the emission specified in Table 3, are discharged only from the corresponding discharge point and only at the corresponding discharge point location.

Table 3: Authorised discharge points

	Emission	Discharge point	Discharge point location
1.	Saline mine water	White Foil Dam	As shown in Schedule 1, Figure 1

8. The works approval holder shall immediately recover, or remove and dispose of, spills of environmentally hazardous materials including saline water or fuel, oil, or other hydrocarbons, whether inside or outside an engineered containment system.

Monitoring during time limited operations

9. The works approval holder must monitor emissions during time limited operations in accordance with Table 4.

Table 4: Emissions and discharge monitoring during time limited operations

Discharge point	Parameter	Frequency	Averaging Period	Unit
White Foil Dam discharge point of Cutters Ridge pipeline	Volumetric flow rate	Continuous	Daily	kL
	pH	Each six monthly period	Spot sample	-
	Total dissolved solids			mg/L

10. The works approval holder must record the results of all monitoring activity required by condition 9.
11. The licence holder must ensure that monitoring is undertaken in each six monthly period such that there are at least 90 days in between the days on which samples are taken in successive periods.

Compliance reporting

12. The works approval holder must submit to the CEO a report on the time limited operations within 30 calendar days of the completion date of time limited operations.
13. The works approval holder must ensure the report required by condition 12 includes the following:
- (a) a summary of the time limited operations, including timeframes and amount of mine water transferred;

- (b) a summary of monitoring results obtained during time limited operations under condition 9;
- (c) a summary of the environmental performance of all infrastructure as constructed or installed;
- (d) a review of performance and compliance against the conditions of the works approval; and
- (e) where the manufacturer's design specifications and the conditions of this works approval have not been met, what measures will the works approval holder take to meet them, and what timeframes will be required to implement those measures.

Records and reporting (general)

- 14.** The works approval holder must record the following information in relation to complaints received by the works approval holder (whether received directly from a complainant or forwarded to them by the Department or another party) about any alleged emissions from the premises:
 - (a) the name and contact details of the complainant, (if provided);
 - (b) the time and date of the complaint;
 - (c) the complete details of the complaint and any other concerns or other issues raised; and
 - (d) the complete details and dates of any action taken by the works approval holder to investigate or respond to any complaint.

- 15.** The works approval holder must maintain accurate and auditable books including the following records, information, reports, and data required by this works approval:
 - (a) the works conducted in accordance with condition 1;
 - (b) any maintenance of infrastructure that is performed in the course of complying with condition 6;
 - (c) monitoring programmes undertaken in accordance with condition 9; and
 - (d) complaints received under condition 14.

- 16.** The books specified under condition 15 must:
 - (a) be legible;
 - (b) if amended, be amended in such a way that the original version(s) and any subsequent amendments remain legible and are capable of retrieval;
 - (c) be retained by the works approval holder for the duration of the works approval; and
 - (d) be available to be produced to an inspector or the CEO as required.

Definitions

In this works approval, the terms in Table 5 have the meanings defined.

Table 5: Definitions

Term	Definition
books	has the same meaning given to that term under the EP Act.
CEO	means Chief Executive Officer. CEO for the purposes of notification means: Director General Department administering the <i>Environmental Protection Act 1986</i> Locked Bag 10 Joondalup DC WA 6919 info@dwer.wa.gov.au
condition	a condition to which this works approval is subject under section 62 of the EP Act.
Department	means the department established under section 35 of the <i>Public Sector Management Act 1994</i> and designated as responsible for the administration of Part V Division 3 of the EP Act.
discharge	has the same meaning given to that term under the EP Act.
emission	has the same meaning given to that term under the EP Act.
Environmental Compliance Report	means a report to satisfy the CEO that the conditioned infrastructure has been constructed and/or installed in accordance with the works approval.
EP Act	<i>Environmental Protection Act 1986</i> (WA).
EP Regulations	<i>Environmental Protection Regulations 1987</i> (WA).
premises	the premises to which this licence applies, as specified at the front of this licence and as shown on the premises map in Schedule 1 to this works approval.
prescribed premises	has the same meaning given to that term under the EP Act.
Civil Engineer	suitably qualified civil engineer who holds a Bachelor of Engineering recognised by the Australian Institute of Engineers and has a minimum professional experience of three years.
six monthly period	a six-month period commencing from first day of January until the last day of June, or commencing from first day of July until the last day of December, in the same year.
time limited	refers to the operation of the infrastructure and equipment identified under this works approval that is authorised for that

Term	Definition
operations	purpose, subject to the relevant conditions.
works approval	refers to this document, which evidences the grant of the works approval by the CEO under section 54 of the EP Act, subject to the conditions.
works approval holder	refers to the occupier of the premises being the person to whom this works approval has been granted, as specified at the front of this works approval.

END OF CONDITIONS

Schedule 1: Maps

Premises map

The boundary of the prescribed premises is shown in the map below (Figure 1).

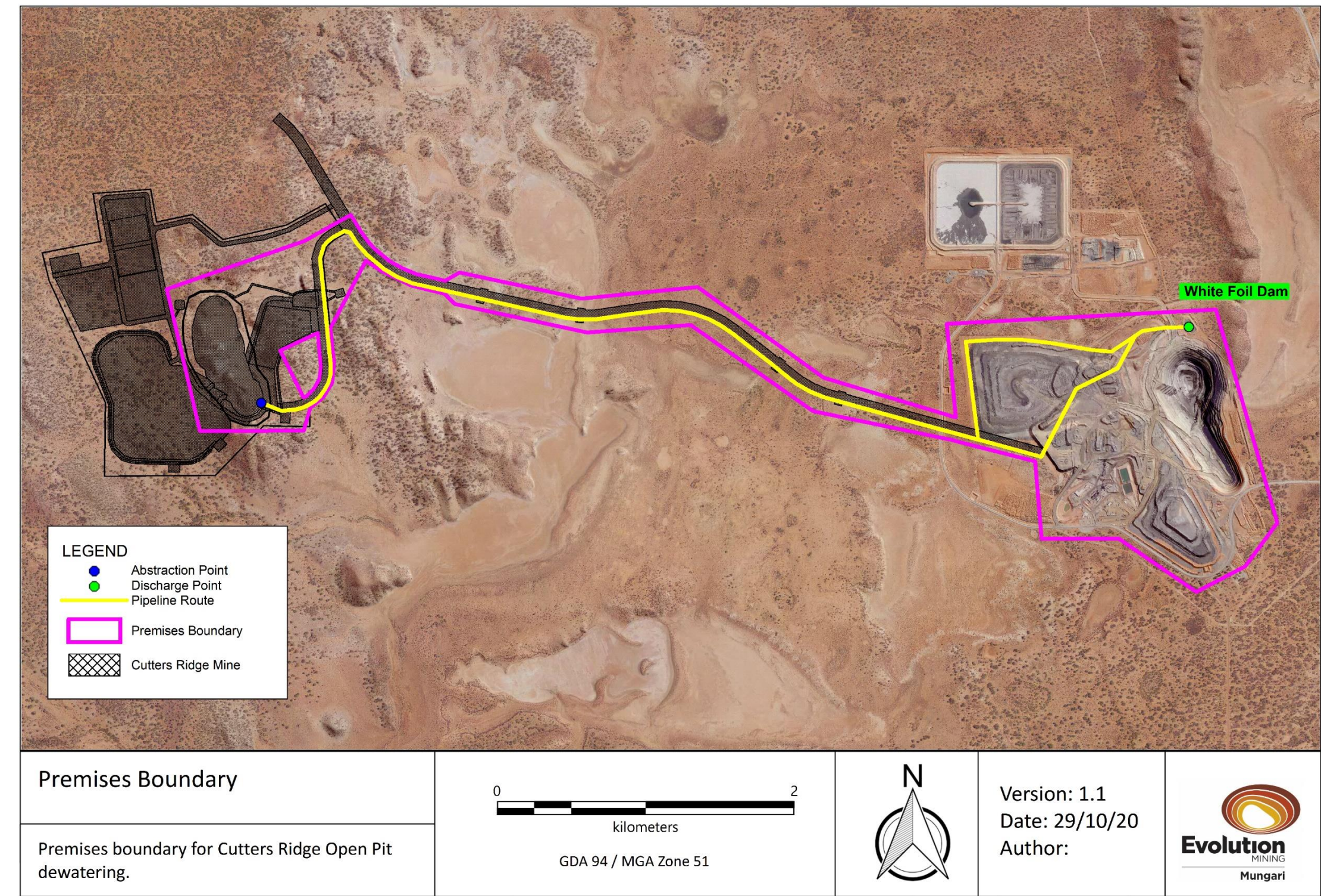


Figure 1: Map of the boundary of the prescribed premises