



<b>Works approval number</b>	W6424/2020/1
<b>Works approval holder</b>	Paddington Gold Pty Ltd
<b>ACN</b>	008 585 886
<b>Registered business address</b>	Level 1, Viskovich House 377 Hannan Street, Kalgoorlie, WA 6340
<b>DWER file number</b>	DER2018/001042-3~65
<b>Duration</b>	10/09/2020 to 10/09/2023
<b>Date of issue</b>	10/09/2020
<b>Premises details</b>	Golden Funnel Mining tenements M24/304 and M24/102 As defined in Schedule 1 City of Kalgoorlie-Boulder

<b>Prescribed premises category description</b> (Schedule 1, <i>Environmental Protection Regulations 1987</i> )	<b>Assessed design capacity</b>
Category 6: Mine dewatering: premises on which water is extracted and discharged into the environment to allow mining of ore.	2,500,000 tonnes/yr inclusive of dewatering quantity approved under W6348/2020/1

This works approval is granted to the works approval holder, subject to the attached conditions, on 10 September 2020, by:

**Lauren Fox**

**A/MANAGER – RESOURCE INDUSTRIES**

an officer delegated under section 20 of the *Environmental Protection Act 1986* (WA)

## Interpretation

In this works approval:

- (a) the words 'including', 'includes' and 'include' in conditions mean "including but not limited to", and similar, as appropriate;
- (b) where any word or phrase is given a defined meaning, any other part of speech or other grammatical form of that word or phrase has a corresponding meaning;
- (c) where tables are used in a condition, each row in a table constitutes a separate condition;
- (d) any reference to an Australian or other standard, guideline, or code of practice in this works approval:
  - (i) if dated, refers to that particular version; and
  - (ii) if not dated, refers to the latest version and therefore may be subject to change over time;
- (e) unless specified otherwise, any reference to a section of an Act refers to that section of the EP Act; and
- (f) unless specified otherwise, all definitions are in accordance with the EP Act.

**NOTE:** This works approval requires specific conditions to be met but does not provide any implied authorisation for other emissions, discharges, or activities not specified in this works approval.

# Works approval conditions

The works approval holder must ensure that the following conditions are complied with:

## Construction phase

### Infrastructure and equipment

1. The works approval holder must:
  - (a) construct the infrastructure;
  - (b) in accordance with the corresponding design and construction requirements; and
  - (c) at the corresponding infrastructure location.as set out in Table 1.

**Table 1 Design and construction requirements**

	Infrastructure	Design and construction requirements	Infrastructure location
1.	Dewatering pipelines from Golden Funnel and Golden Funnel North pits to Racetrack pit	110 mm High Density Polyethylene (HDPE) that meets: <ul style="list-style-type: none"><li>• Australian/New Zealand Standard (AS/NZS) 2033:2008: Installation of polyethylene pipe systems;</li><li>• AS/NZS 4129:2008 Fittings for polyethylene (PE) pipes for pressure applications;</li><li>• AS/NZS 4130:2009 Polyethylene (PE) pipes for pressure applications; and</li><li>• AS/NZS 4131:2010 Polyethylene (PE) compounds for pressure pipes and fittings.</li></ul> contained within an earthen v-drain bund.	As shown in Figure 2 of Schedule 1.
2.	Scour pits	Capacity of bund and scour pit(s) to be sufficient to contain a spill for a period equal to the time between routine inspections. Inspections will be 12 hourly if flow rates in any line do not exceed 30L/s; or 6 hourly when flow rates in either pipe are 30-60L/s	

### Compliance reporting

2. The works approval holder must within 30 calendar days of an item of infrastructure required by condition 1 being constructed:
  - (a) undertake an audit of their compliance with the requirements of condition 1; and
  - (b) prepare and submit to the CEO an Environmental Compliance Report on that compliance.

3. The Environmental Compliance Report required by condition 2, must include as a minimum the following:
  - (a) certification by the Regional Maintenance Coordinator that the items of infrastructure or component(s) thereof, as specified in condition 1 have been constructed in accordance with the relevant requirements specified in condition 1;
  - (b) as constructed plans and a detailed site plan for each item of infrastructure or component of infrastructure specified in condition 1; and
  - (c) be signed by a person authorised to represent the works approval holder and contains the printed name and position of that person.

## Time limited operations phase

### Commencement and duration

4. The works approval holder may only commence time limited operations for an item of infrastructure identified in condition 1 where the Environmental Compliance Report as required by condition 2 has been submitted by the works approval holder for that item of infrastructure.
5. The works approval holder may conduct time limited operations for an item of infrastructure specified in condition 1 (as applicable):
  - (a) for a period not exceeding 180 calendar days from the day the works approval holder meets the requirements of condition 4 for that item of infrastructure; or
  - (b) until such time as a licence for that item of infrastructure is granted in accordance with Part V of the *Environmental Protection Act 1986*.

### Time limited operations requirements and emission limits

6. During time limited operations, the works approval holder must ensure that the emissions specified in Table 2, are discharged only from the corresponding discharge point and only at the corresponding discharge point location.

**Table 2: Authorised discharge points and emission limits**

Emission	Emission limit	Discharge point	Discharge point location
Saline mine water	2,500,000 tonnes/yr inclusive of dewatering quantity approved under W6348/2020/1	Racetrack pit	As shown in Figure 2 Schedule 1

7. During time limited operations, the works approval holder must ensure that the premises infrastructure and equipment listed in Table 2 and shown in Schedule 1 is maintained and operated in accordance with the corresponding operational requirement set out in Table 3.

**Table 3: Infrastructure and equipment requirements during time limited operations**

	Site infrastructure and equipment	Operational requirement	Infrastructure location
1.	Racetrack Pit	<ul style="list-style-type: none"> <li>A minimum vertical freeboard of 6m must be maintained below the lowest crest level at all times.</li> </ul>	Approximately as shown in the Figure 2 of

	Site infrastructure and equipment	Operational requirement	Infrastructure location
		<ul style="list-style-type: none"> <li>Markers to be installed and maintained at 6m below lowest pit crest.</li> <li>When the water level approaches 6m from the surface of the pit, implement actions as required to reduce water levels.</li> <li>Must be inspected monthly (whilst operating) for freeboard capacity.</li> <li>A written log is required to be maintained for each inspection.</li> </ul>	Schedule 1. Pipeline alignment may vary slightly.
2.	110 mm single weld HDPE pipeline	<ul style="list-style-type: none"> <li>An inspection is required for visual integrity and leak detection 12 hourly if flow rates in any line do not exceed 30L/s; or 6 hourly when flow rates in either line are over 30L/s</li> <li>A written log is required to be maintained for each inspection, with the record of each inspection signed by the responsible person.</li> </ul>	
3.	Pipeline bund and sumps	Bund and sumps maintained along entire pipeline, sufficient to contain the flow in a 110mm line for 12 hours at 30L/s.	

8. The works approval holder shall immediately recover, or remove and dispose of, spills of environmentally hazardous materials including saline water or fuel, oil, or other hydrocarbons, whether inside or outside an engineered containment system.

### Monitoring during time limited operations

9. The works approval holder must monitor emissions during time limited operations in accordance with Table 4.

**Table 4: Emissions and discharge monitoring during time limited operations**

Discharge point	Parameter	Frequency	Averaging Period	Unit
Racetrack Pit	Volumetric flow rate	Continuous	Monthly	kL
	Standing water level	Each monthly period	Spot sample	metres below pit crest level
	pH	Each six monthly period		-
	Total dissolved solids			mg/L

10. The works approval holder must record the results of all monitoring activity required by condition 9.
11. The licence holder must ensure that:
- monitoring is undertaken in each monthly period such that there are at least 15 days in between the days on which samples are taken in successive months; and

- (b) monitoring is undertaken each six monthly period such that there are at least 120 days in between the days on which samples are taken in successive quarters.

### Compliance reporting

- 12. The works approval holder must submit to the CEO a report on the time limited operations within 30 calendar days of the completion date of time limited operations.
- 13. The works approval holder must ensure the report required by condition 12 includes the following:
  - (a) a summary of the time limited operations, including timeframes and kilolitres of water pumped;
  - (b) a summary of monitoring results obtained during time limited operations under condition 9.
  - (c) a review of performance and compliance against the conditions of the works approval; and
  - (d) where the conditions of this works approval have not been met, what measures will the works approval holder take to meet them, and what timeframes will be required to implement those measures.

### Records and reporting (general)

- 14. The works approval holder must record the following information in relation to complaints received by the works approval holder (whether received directly from a complainant or forwarded to them by the Department or another party) about any alleged emissions from the premises:
  - (a) the name and contact details of the complainant, (if provided);
  - (b) the time and date of the complaint;
  - (c) the complete details of the complaint and any other concerns or other issues raised; and
  - (d) the complete details and dates of any action taken by the works approval holder to investigate or respond to any complaint.
- 15. The works approval holder must maintain accurate and auditable books including the following records, information, reports, and data required by this works approval:
  - (a) the works conducted in accordance with condition 1;
  - (b) any maintenance of infrastructure that is performed in the course of complying with condition 7;
  - (c) monitoring programmes undertaken in accordance with condition 9; and
  - (d) complaints received under condition 14.
- 16. The books specified under condition 15 must:
  - (a) be legible;
  - (b) if amended, be amended in such a way that the original version(s) and any subsequent amendments remain legible and are capable of retrieval;
  - (c) be retained by the works approval holder for the duration of the works approval; and
  - (d) be available to be produced to an inspector or the CEO as required.

## Definitions

In this works approval, the terms in Table 5 have the meanings defined.

**Table 5: Definitions**

Term	Definition
AS/NZS 2033:2008	Australian New Zealand Standard: Installation of polyethylene pipe systems
AS/NZS 4129:2008	Australian New Zealand Standard: Fittings for polyethylene (PE) pipes for pressure applications
AS/NZS 4130:2009	Australian New Zealand Standard: Polyethylene (PE) pipes for pressure applications
AS/NZS 4131:2010	Polyethylene (PE) compounds for pressure pipes and fittings
books	has the same meaning given to that term under the EP Act.
CEO	means Chief Executive Officer. CEO for the purposes of notification means: Director General Department administering the <i>Environmental Protection Act 1986</i> Locked Bag 10 Joondalup DC WA 6919 <a href="mailto:info@dwer.wa.gov.au">info@dwer.wa.gov.au</a>
Department	means the department established under section 35 of the <i>Public Sector Management Act 1994</i> and designated as responsible for the administration of Part V Division 3 of the EP Act.
discharge	has the same meaning given to that term under the EP Act.
emission	has the same meaning given to that term under the EP Act.
EP Act	<i>Environmental Protection Act 1986</i> (WA).
EP Regulations	<i>Environmental Protection Regulations 1987</i> (WA).
monthly period	means a one-month period commencing from the first day of a month until the last day of that same month.
premises	the premises to which this licence applies, as specified at the front of this licence and as shown on the premises map (Figure 1) in Schedule 1 to this works approval.
prescribed premises	has the same meaning given to that term under the EP Act.
quarterly period	means a three-month period commencing from 1 July, 1 October, 1 January or 1 April of each year.

Term	Definition
six monthly period	means a six-month period commencing from 1 July or 1 January of each year.
time limited operations	refers to the operation of the infrastructure and equipment identified under this works approval that is authorised for that purpose, subject to the relevant conditions.
waste	has the same meaning given to that term under the EP Act.
works approval	refers to this document, which evidences the grant of the works approval by the CEO under section 54 of the EP Act, subject to the conditions.
works approval holder	refers to the occupier of the premises being the person to whom this works approval has been granted, as specified at the front of this works approval.

---

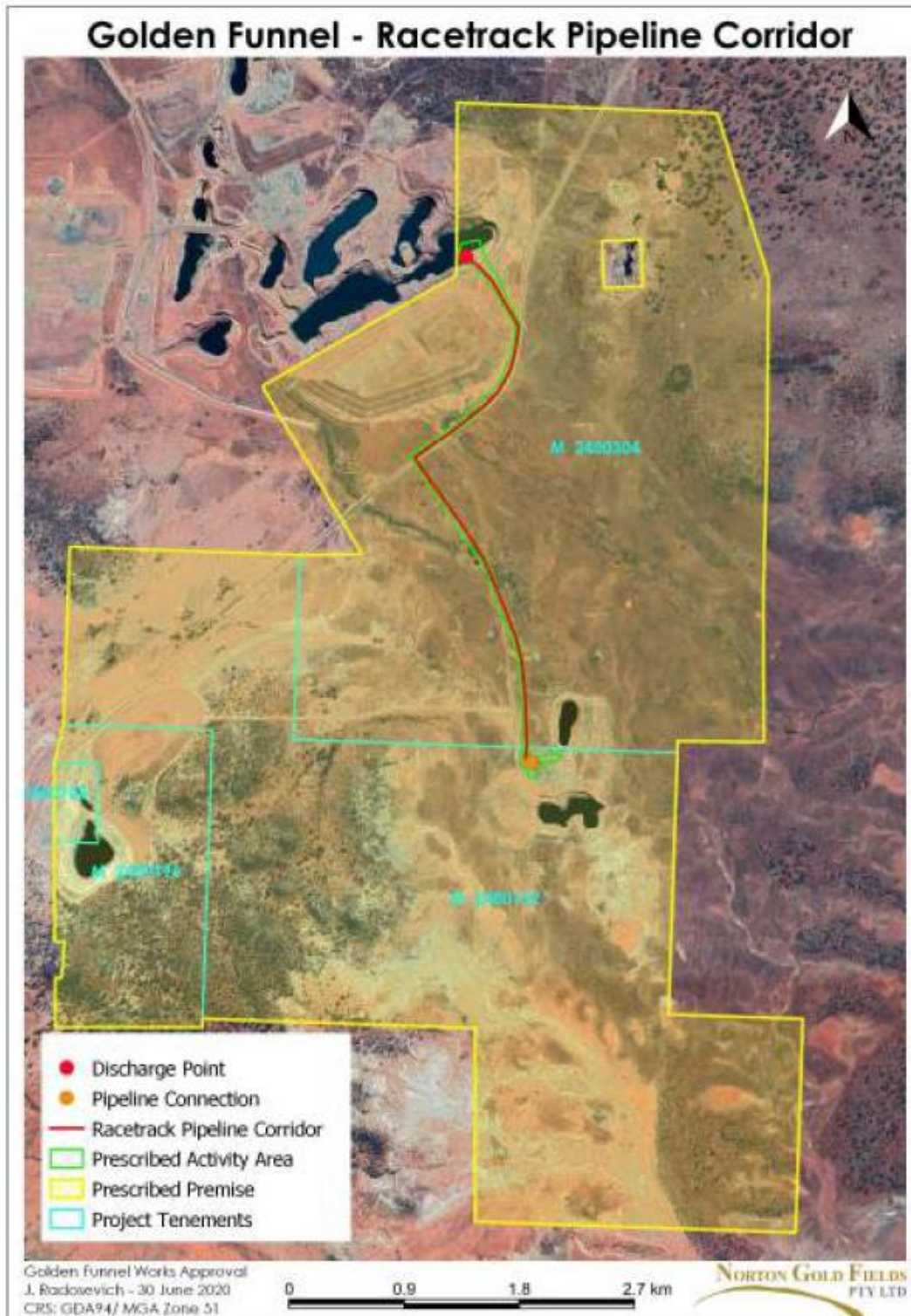
**END OF CONDITIONS**



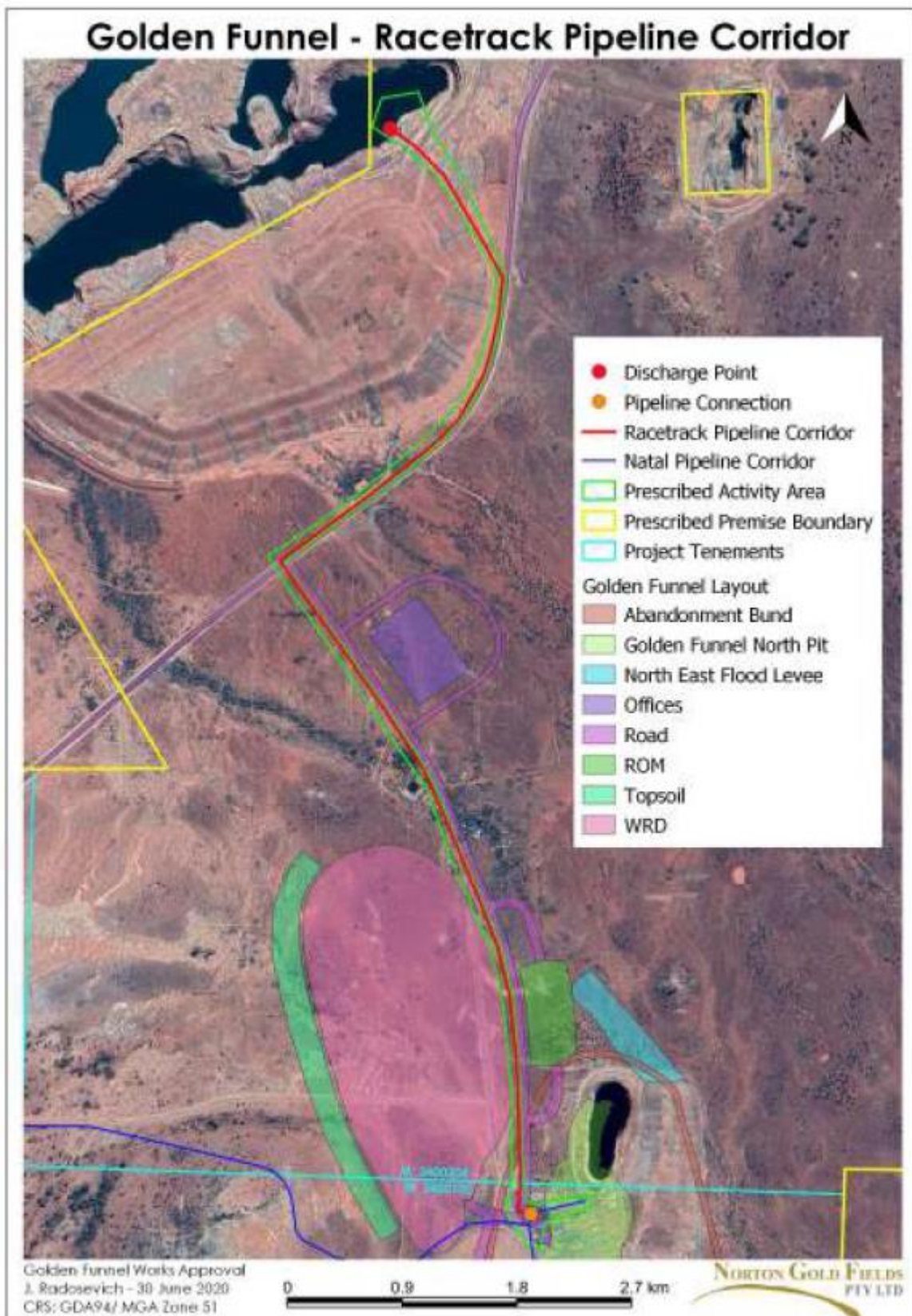
# Schedule 1: Maps

## Premises map

The boundary of the prescribed premises is shown in the map below (Figure 1).



**Figure 1: Map of the boundary of the prescribed premises**



**Figure 2 Racetrack pipeline corridor**