



Works approval number	W6415/2020/1
Works approval holder	APA Power Holding Pty Ltd
ACN	149 762 121
Registered business address	Level 5, Eastpoint Plaza 233 Adelaide Terrace PERTH WA 6000
DWER file number	DER2020/000261
Duration	07/09/2020 to 06/09/2023
Date of issue	7 September 2020
Premises details	Gruyere Power Station Part of Mining Lease M38/1267 COSMO NEWBERY WA 6440 As defined by the coordinates in Schedule 1

Prescribed premises category description (Schedule 1, <i>Environmental Protection Regulations 1987</i>)	Assessed design capacity
Category 52: Electric power generation: premises on which electrical power is generated using a fuel.	Total power station capacity: 58.4 MW

This works approval is granted to the works approval holder, subject to the attached conditions, on 7 September 2020, by:

Peter Knol
Senior Environmental Officer, Process Industries
an officer delegated under section 20 of the *Environmental Protection Act 1986* (WA)

Interpretation

In this works approval:

- (a) the words 'including', 'includes' and 'include' in conditions mean "including but not limited to", and similar, as appropriate;
- (b) where any word or phrase is given a defined meaning, any other part of speech or other grammatical form of that word or phrase has a corresponding meaning;
- (c) where tables are used in a condition, each row in a table constitutes a separate condition;
- (d) any reference to an Australian or other standard, guideline, or code of practice in this works approval:
 - (i) if dated, refers to that particular version; and
 - (ii) if not dated, refers to the latest version and therefore may be subject to change over time;
- (e) unless specified otherwise, any reference to a section of an Act refers to that section of the EP Act; and
- (f) unless specified otherwise, all definitions are in accordance with the EP Act.

NOTE: This works approval requires specific conditions to be met but does not provide any implied authorisation for other emissions, discharges, or activities not specified in this works approval.

Works approval conditions

The works approval holder must ensure that the following conditions are complied with:

Construction phase

Infrastructure and equipment

1. The works approval holder must:
 - (a) construct and install the infrastructure and equipment;
 - (b) in accordance with the corresponding design and construction / installation requirements; and
 - (c) at the corresponding infrastructure location as set out in Table 1

Table 1: Design and construction / installation requirements

	Infrastructure	Design and construction / installation requirements	Infrastructure location
1.	Two Jenbacher J624 GS-N.L H111 gas engine generating sets	Located in bunded areas which meet the requirements of AS 1940, AS 2067 and AS/NZS 3007. One emission stack per generator with a minimum height of 12 m AGL.	Gen 14 and Gen 15, as seen in Schedule 1 - Figure 2

Compliance reporting

2. The works approval holder must within 60 calendar days of an item or all items of infrastructure required by condition being constructed or installed:
 - (a) undertake an audit of their compliance with the requirements of condition 1; and
 - (b) prepare and submit to the CEO an Environmental Compliance Report on that compliance.
3. The Environmental Compliance Report required by condition 1, must include as a minimum the following:
 - (a) certification by a suitably qualified person that the items of infrastructure or component(s) thereof, as specified in condition 1 have been constructed in accordance with the relevant requirements specified in condition 1;
 - (b) as constructed plans and a detailed site plan for each item of infrastructure or component of infrastructure specified in condition 1; and
 - (c) be signed by a person authorised to represent the works approval holder and contains the printed name and position of that person.

Time limited operations phase

Commencement and duration

4. The works approval holder may only commence time limited operations for an item of infrastructure identified in condition 1 where the Environmental Compliance Report as required by condition 2 has been submitted by the works approval holder

for that item of infrastructure.

5. The works approval holder may conduct time limited operations for an item of infrastructure specified in condition 1:
- (a) for a period not exceeding 180 days from the day the works approval holder meets the requirements of condition 2 for that item of infrastructure; or
 - (b) until such time as a licence for that item of infrastructure is granted in accordance with Part V of the *Environmental Protection Act 1986*;
- whichever comes first.
6. The works approval holder must ensure that the emissions specified in Table 2, are discharged only from the corresponding discharge point and only at the corresponding discharge point location.

Table 2: Authorised discharge points

Emission	Discharge point	Discharge point location
Waste gasses from the infrastructure listed in condition 1	Exhaust stacks of the infrastructure listed in condition 1.	Gen 14 and Gen 15, as seen in Schedule 1 - Figure 2.

Records and reporting (general)

7. The works approval holder must record the following information in relation to complaints received by the works approval holder (whether received directly from a complainant or forwarded to them by the Department or another party) about any alleged emissions from the premises:
- (a) the name and contact details of the complainant, (if provided);
 - (b) the time and date of the complaint;
 - (c) the complete details of the complaint and any other concerns or other issues raised; and
 - (d) the complete details and dates of any action taken by the works approval holder to investigate or respond to any complaint.
8. The works approval holder must maintain accurate and auditable books including the following records, information, reports, and data required by this works approval:
- (a) the works conducted in accordance with condition 1;
 - (b) any maintenance of infrastructure that is performed in the course of complying with condition 1; and
 - (c) complaints received under condition 7.
9. The books specified under condition 8 must:
- (a) be legible;
 - (b) if amended, be amended in such a way that the original version(s) and any subsequent amendments remain legible and are capable of retrieval;
 - (c) be retained by the works approval holder for the duration of the works approval; and
 - (d) be available to be produced to an inspector or the CEO as required.

Definitions

In this works approval, the terms in Table 3 have the meanings defined.

Table 3: Definitions

Term	Definition
AGL	above ground level
CEO	Chief Executive Officer. CEO for the purposes of notification means: Director General Department administering the <i>Environmental Protection Act 1986</i> Locked Bag 10 Joondalup DC WA 6919 info@dwer.wa.gov.au
Department	the department established under section 35 of the <i>Public Sector Management Act 1994</i> and designated as responsible for the administration of Part V Division 3 of the EP Act.
Environmental Compliance Report	a report to satisfy the CEO that the conditioned infrastructure and/or equipment has been constructed and/or installed in accordance with the works approval.
EP Act	<i>Environmental Protection Act 1986</i> (WA).
premises	the premises to which this licence applies, as specified at the front of this licence and as shown on the premises map (Figure 1) in Schedule 1 to this works approval.
time limited operations	the operation of the infrastructure and equipment identified under this works approval that is authorised for that purpose, subject to the relevant conditions.
works approval	this document, which evidences the grant of the works approval by the CEO under section 54 of the EP Act, subject to the conditions.
works approval holder	the occupier of the premises being the person to whom this works approval has been granted, as specified at the front of this works approval.

END OF CONDITIONS

Schedule 1: Maps

Premises map

The boundary of the prescribed premises is shown in the map below (Figure 1).

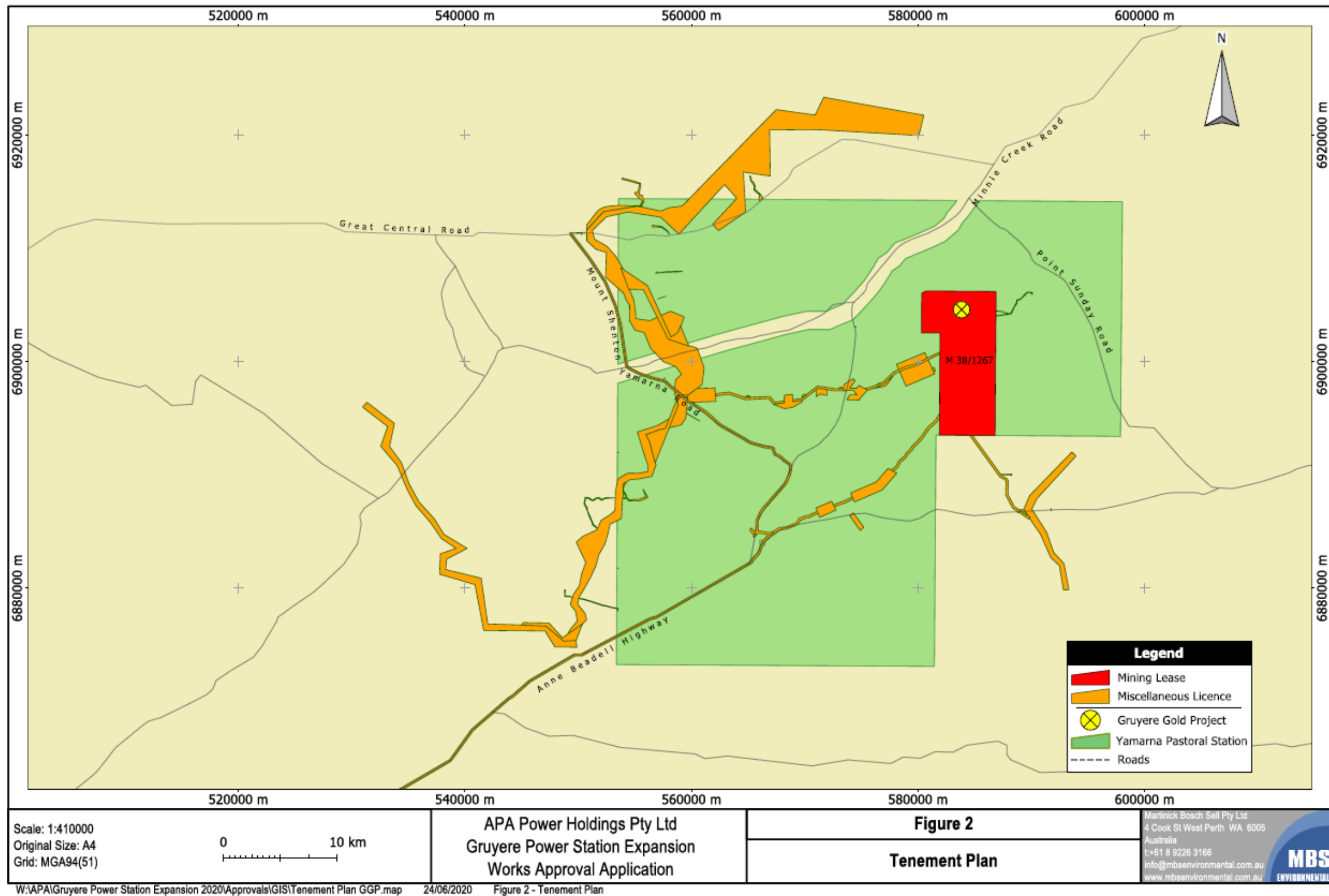


Figure 1: Map of the boundary of the prescribed premises

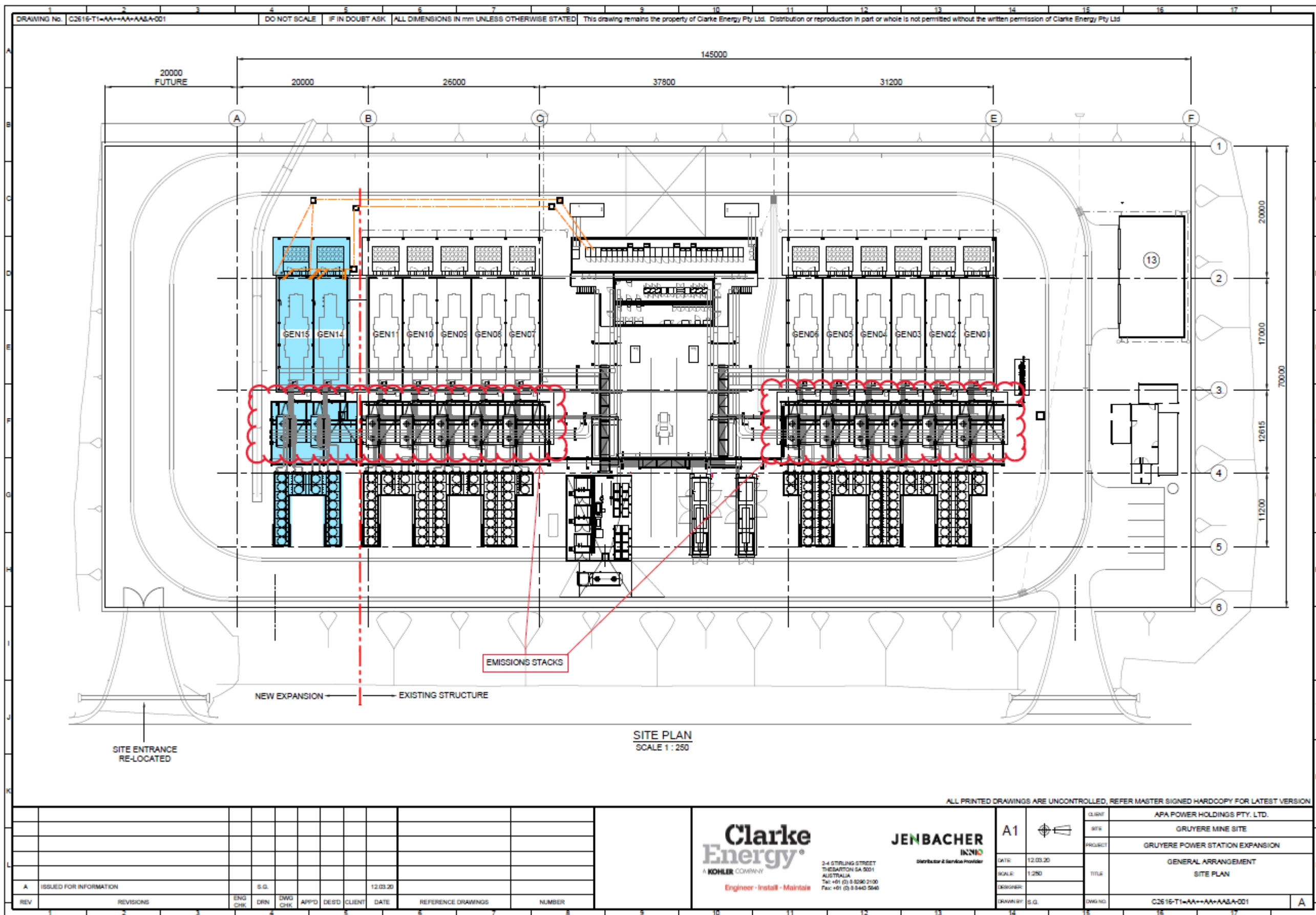


Figure 2: Site layout