



Works Approval Number	W6043/2017/1
Works Approval Holder	Atlas Iron Limited
ACN	110 396 168
Registered business address	Level 17, 300 Murray Street PERTH WA 6000
File Number	DER2017/000441
Duration	06/09/2017 to 30/06/2022
Date of Amendment	2 September 2020
Prescribed Premises	Category 5 – Processing or beneficiation of metallic or non-metallic ore Category 85 – Sewage facility Category 89 – Putrescible landfill site
Premises	Corunna Downs Project G45/339, L45/408, L45/407, L45/410 and M45/1257 NULLAGINE WA 6758

This amended Works Approval is granted to the Works Approval Holder, subject to the following conditions, on 2 September 2020, by:

Carmen Standring

**A/MANAGER, RESOURCE INDUSTRIES
REGULATORY SERVICES**

an officer delegated under section 20 of the *Environmental Protection Act 1986* (WA)

Explanatory notes

These explanatory notes do not form part of this Works Approval.

Defined terms

Definition of terms used in this Works Approval can be found at the start of this Works Approval. Terms which are defined have the first letter of each word capitalised throughout this Works Approval.

Department of Water and Environmental Regulation

The Department of Water and Environmental Regulation (DWER) is established under section 35 of the *Public Sector Management Act 1994* and designated as responsible for the administration of Part V, Division 3 of the *Environmental Protection Act 1986* (WA) (EP Act). The Department also monitors and audits compliance with licences and works approvals, takes enforcement action and develops and implements licensing and industry regulation policy.

Works Approval

Section 52 of the EP Act provides that an occupier of any premises commits an offence if any work is undertaken on, or in relation to, the premises which causes the premises to become, or to become capable of being, Prescribed Premises, except in accordance with a works approval.

Section 56 of the EP Act provides that an occupier of Prescribed Premises commits an offence if Emissions are caused or increased or permitted to be caused or increased, or Waste, noise, odour or electromagnetic radiation is altered or permitted to be altered from Prescribed Premises, except in accordance with a works approval or licence.

Categories of Prescribed Premises are defined in Schedule 1 of the *Environment Protection Regulations 1987* (WA) (EP Regulations).

This Works Approval does not authorise any activity which may be a breach of the requirements of another statutory authority including, but not limited to, the following:

- conditions imposed by the Minister for Environment under Part IV of the EP Act;
- conditions imposed by DWER for the clearing of native vegetation under Part V, Division 2 of the EP Act;
- any requirements under the *Waste Avoidance and Resource Recovery Act 2007*;
- any requirements under the *Environmental Protection (Controlled Waste) Regulations 2004*; and
- any other requirements specified through State legislation.

It is the responsibility of the Works Approval Holder to ensure that any action or activity referred to in this Works Approval is permitted by, and is carried out in compliance with, statutory requirements.

The Works Approval Holder must comply with the Works Approval. Contravening a Works Approval Condition is an offence under s.55 of the EP Act.
--

Responsibilities of Works Approval Holder

Separate to the requirements of this Works Approval, general obligations of Works Approval Holders are set out in the EP Act and the regulations made under the EP Act. For example, the Works Approval Holder must comply with the following provisions of the EP Act:

- the duties of an occupier under s.61; and

- restrictions on making certain changes to Prescribed Premises unless the changes are in accordance with a Works Approval, Licence, closure notice or environmental protection notice (s.53).

Strict penalties apply for offences under the EP Act.

Reporting of incidents

The Works Approval Holder has a duty to report to the Department all Discharges of Waste that have caused or are likely to cause Pollution, Material Environmental Harm or Serious Environmental Harm, in accordance with s.72 of the EP Act.

Offences and defences

The EP Act and its regulations set out a number of offences including:

- Offence of emitting an Unreasonable Emission from any Premises under s.49.
- Offence of causing Pollution under s.49.
- Offence of dumping Waste under s.49A.
- Offence of discharging Waste in circumstances likely to cause Pollution under s.50.
- Offence of causing Serious Environmental Harm (s.50A) or Material Environmental Harm (s.50B).
- Offence of causing Emissions which do not comply with prescribed standards (s.51).
- Offences relating to Emissions or Discharges under regulations prescribed under the EP Act, including materials discharged under the *Environmental Protection (Unauthorised Discharges) Regulations 2004 (WA)*.
- Offences relating to noise under the *Environmental Protection (Noise) Regulations 1997 (WA)*.

Section 53 of the EP Act provides that a Works Approval Holder commits an offence if Emissions are caused, or altered, from a Prescribed Premises unless done in accordance with a Works Approval, Licence or the requirements of a closure notice or an environmental protection notice.

Defences to certain offences may be available to a Works Approval Holder and these are set out in the EP Act. Section 74A(b)(iii) provides that it is a defence to an offence for causing Pollution, in respect of an Emission, or for causing Serious Environmental Harm or Material Environmental Harm, or for discharging or abandoning Waste in water to which the public has access, if the Works Approval Holder can prove that an Emission or Discharge occurred in accordance with a Works Approval.

This Works Approval specifies the Emissions and Discharges, and the limits and Conditions which must be satisfied in respect of specified Emissions and Discharges, in order for the defence to offence provision to be available.

Authorised Emissions and Discharges

The specified and general Emissions and Discharges from the Works authorised through this Works Approval are authorised to be conducted in accordance with the Conditions of this Works Approval.

Amendment of Works Approval

The Works Approval Holder can apply to amend the Conditions of this Works Approval under s.59 of the EP Act. An application form for this purpose is available from DWER.

The CEO may also amend the Conditions of this Works Approval at any time on the initiative of the CEO without an application being made.

Duration of Works Approval

The Works Approval will remain in force for the duration set out on the first page of this Works Approval or until it is surrendered, suspended or revoked in accordance with s.59A of the EP Act.

Suspension or revocation

The CEO may suspend or revoke this Works Approval in accordance with s.59A of the EP Act.

Definitions and interpretation

Definitions

In this Works Approval, the terms in Table 1 have the meanings defined.

Table 1: Definitions

Term	Definition
ACN	Australian Company Number
Books	has the same meaning given to that term under the EP Act.
CEO	means Chief Executive Officer. CEO for the purposes of notification means: Director General Department Administering the Environmental Protection Act 1986 Locked Bag 10 JOONDALUP DC WA 6027 Email: info@dwer.wa.gov.au
Calendar days	All days Monday-Sunday, including public holidays
Condition	means a condition to which this Works Approval is subject under s.62 of the EP Act.
Department	means the department established under s.35 of the <i>Public Sector Management Act 1994</i> and designated as responsible for the administration of Part V, Division 3 of the EP Act.
Department Request	means a request for Books or other sources of information to be produced, made by an Inspector or the CEO to the Works Approval Holder in writing and sent to the Works Approval's address for notifications, as described at the front of this Works Approval, in relation to: (a) compliance with the EP Act or this Works Approval; (b) the Books or other sources of information maintained in accordance with this Works Approval; or (c) the Books or other sources of information relating to Emissions from the Premises.
Discharge	has the same meaning given to that term under the EP Act.
DWER	Department of Water and Environmental Regulation
Emission	has the same meaning given to that term under the EP Act.
Environmental Commissioning	means the sequence of activities to be undertaken to test equipment integrity and operation, or to determine the environmental performance, of equipment and infrastructure to establish or test a steady state operation and confirm design specifications.

Environmental Compliance Report	means a report to satisfy the CEO that the conditioned infrastructure has been constructed in accordance with the works approval.
Environmental Harm	has the same meaning given to that term under the EP Act.
EP Act	means the <i>Environmental Protection Act 1986</i> (WA).
EP Regulations	means the <i>Environmental Protection Regulations 1987</i> (WA).
Implementation Agreement or Decision	has the same meaning given to that term under the EP Act.
Inspector	means an inspector appointed by the CEO in accordance with s.88 of the EP Act.
Material Environmental Harm	has the same meaning given to that term under the EP Act.
Pollution	has the same meaning given to that term under the EP Act.
Premises	refers to the premises to which this Works Approval applies, as specified at the front of this Works Approval and as shown on the map in Schedule 1 to this Works Approval.
Prescribed Premises	has the same meaning given to that term under the EP Act.
Serious Environmental Harm	has the same meaning given to that term under the EP Act.
RO	Reverse osmosis
Time limited operations	refers to the operation of the infrastructure and equipment identified under this works approval that is authorised for that purpose, subject to the relevant conditions.
Unreasonable Emission	has the same meaning given to that term under the EP Act.
Waste	has the same meaning given to that term under the EP Act.
Works	refers to the Works described in Schedule 3, at the locations shown in Schedule 1 of this Works Approval to be carried out at the Premises, subject to the Conditions.
Works Approval	refers to this document, which evidences the grant of the works approval by the CEO under s.54 of the EP Act, subject to the Conditions.

Works Approval Holder	refers to the occupier of the Premises being the person to whom this Works Approval has been granted, as specified at the front of this Works Approval.
WWTP	Wastewater treatment plant

Interpretation

In this Works Approval:

- (a) the words 'including', 'includes' and 'include' will be read as if followed by the words 'without limitation';
- (b) where any word or phrase is given a defined meaning, any other part of speech or other grammatical form of that word or phrase has a corresponding meaning;
- (c) where tables are used in a Condition, each row in a table constitutes a separate Condition;
- (d) any reference to an Australian or other standard, guideline or code of practice in this Works Approval means the version of the standard, guideline or code of practice in force at the time of granting of this Works Approval and includes any amendments to the standard, guideline or code of practice which may occur from time to time during the course of the Works Approval; and
- (e) unless specified otherwise, any reference to a section of an Act refers to that section of the EP Act.

Conditions

Infrastructure and equipment

1. The Works Approval Holder must install and undertake the Works for the infrastructure and equipment:
 - (a) specified in Column 1;
 - (b) to the requirements specified in Column 2; and
 - (c) at the location specified in Column 4 of Table 9 in Schedule 2.
2. The Works Approval Holder must not depart from the requirements specified in Column 2 of Table 9 in Schedule 2 except:
 - (a) where such departure does not increase risks to public health, public amenity or the environment; and
 - (b) all other Conditions in this Works Approval are still satisfied.
3. The works approval holder must within 60 calendar days of an item of infrastructure required by condition 1 being constructed and/or installed:
 - (a) undertake an audit of their compliance with the requirements of condition 1; and
 - (b) prepare and submit to the CEO an Environmental Compliance Report on that compliance.
4. The Environmental Compliance Report required by condition 3, must include as a minimum the following:
 - (a) certification by a suitably qualified Engineer that the items of infrastructure or component(s) thereof, as specified in condition 1, have been constructed in accordance with the relevant requirements specified in condition 1;
 - (b) as constructed plans and a detailed site plan for each item of infrastructure or component of infrastructure specified in condition 1; and
 - (c) be signed by a person authorised to represent the works approval holder and contains the printed name and position of that person.

Environmental Commissioning

5. Any environmental commissioning activities undertaken for an item of infrastructure specified in Table 2 may only be carried out:
 - (a) in accordance with the corresponding commissioning requirements; and
 - (b) for the corresponding authorised commissioning duration.

Table 2: Environmental commissioning requirements

Infrastructure	Commissioning requirements	Authorised commissioning duration
Crushing and screening plant	No commissioning authorised	-
Wastewater treatment plant	Commissioning	For a period not exceeding 60 calendar days in aggregate.

Infrastructure	Commissioning requirements	Authorised commissioning duration
Landfill	No commissioning authorised	-

6. During environmental commissioning, the works approval holder must ensure that the emission(s) specified in Table 3, are discharged only from the corresponding discharge point(s) and only at the corresponding discharge point location(s).

Table 3: Authorised discharge points for Commissioning

Emission	Discharge point	Discharge point location
Blended effluent from WWTP and RO plant	Irrigation spray field	Shown as 'irrigation spray field' in Schedule 1 Figure 1: Premises layout

7. During environmental commissioning, the works approval holder must ensure that where the sampling specified in Table 4 exceeds the expected maximum value specified in column 5 of Table 4, the effluent is not discharged but retreated or removed from site for disposal at another licenced facility.
8. The works approval holder must monitor the blended effluent from the wastewater treatment plant and reverse osmosis plant during Environmental Commissioning in accordance with Table 4.

Table 4: Effluent output monitoring during Environmental Commissioning

Column 1	Column 2	Column 3	Column 4	Column 5	Column 6
Discharge point	Parameter	Frequency	Unit	Expected maximum ¹	Method
Blended effluent from wastewater treatment plant and Reverse osmosis plant	Biochemical Oxygen Demand (BOD)	Not specified.	mg/L	20	AS5667.1-1998
	Total Suspended Solids (TSS)	Commissioning is complete when the plant is operating under normal conditions, and two consecutive samples more than 24 hours apart are within the expected range for all parameters.	mg/L	30	AS5667.10-1998
	Total Nitrogen (TN)		mg/L	30	
	Total Phosphorus (TP)		mg/L	10	
	E.Coli		cfu/100 ml ²	1000	
	pH		-	6.8 to 8.5	
	Total Dissolved Solids (TDS)		mg/L	2,500	

Note 1: For pH, an acceptable range is given. Outside this range is considered an exceedance for the purpose of condition 7.

9. The works approval holder must record the results of all monitoring activity required by condition 8, including where criteria for discharge are not met.
10. The works approval holder must submit to the CEO an Environmental Commissioning Report within 30 calendar days of the completion date of environmental commissioning for each item of infrastructure specified in Table 2.
11. The works approval holder must ensure the Environmental Commissioning Report required by condition 10 of this works approval includes the following:
- (a) a summary of the environmental commissioning activities undertaken, including timeframes and amounts of wastewater from the WWTP and RO plant emitted.

- (b) all WWTP and RO effluent monitoring results recorded in accordance with condition 9, compared against the expected maximum specified in column 5 of Table 4;
- (c) a summary of the environmental performance of each item of infrastructure or equipment as constructed, which at minimum includes records detailing the:
 - (i) testing the system against expected effluent output criteria and
 - (ii) commissioning of the process control system;
- (d) a review of the works approval holder's performance and compliance against the Environmental Commissioning conditions of this works approval; and
- (e) where they have not been met, measures proposed to meet the manufacturer's design specifications and the conditions of this works approval, together with timeframes for implementing the proposed measures.

Time Limited Operations

- 12.** The works approval holder may only commence time limited operations for an item of infrastructure identified in condition 1:
 - (a) where the item of infrastructure is not authorised to undertake environmental commissioning, the Environmental Compliance Report as required by condition 3 has been submitted by the works approval holder for that item of infrastructure; and
 - (b) where the item of infrastructure is authorised to undertake environmental commissioning under condition 5, the Environmental Commissioning Report for that item of infrastructure as required by condition 10 has been submitted by the works approval holder.
- 13.** The works approval holder may conduct time limited operations for an item of infrastructure specified in condition 12:
 - (a) for a period not exceeding 180 calendar days from the day the works approval holder meets the requirements of condition 12 for that item of infrastructure; or
 - (b) until such time as a licence for that item of infrastructure is granted in accordance with Part V of the *Environmental Protection Act 1986*.
- 14.** During time limited operations, the works approval holder must ensure that the premises infrastructure and equipment listed in Schedule 2 (Column 1 of Table 9) is maintained as specified in Column 2 of Table 9, and operated in accordance with the operational requirements set out in Column 3 of Table 9.
- 15.** During time limited operations, the works approval holder must ensure that the emission(s) specified in Table 5, are discharged only from the corresponding discharge point(s) and only at the corresponding discharge point location(s).

Table 5: Authorised discharge points for Time Limited Operations

Emission	Discharge point	Discharge point location
Blended Effluent from WWTP and RO Plant	Irrigation spray field	Shown as 'irrigation spray field' in Schedule 1 Figure 1: Premises layout

- 16.** During time limited operations, the works approval holder must ensure that the emissions from the discharge point listed in Table 5 do not exceed the limits listed in

Table 6 when monitored in accordance with condition 17.

17. The works approval holder must monitor emissions during time limited operations in accordance with Table 6.

Table 6: Emission and discharge monitoring during time limited operations

Discharge point	Parameter	Frequency	Unit	Limit ²	Method
Blended Effluent from Wastewater Treatment Plant and Reverse Osmosis Plant	Biochemical Oxygen Demand (BOD)	Quarterly (at least 45 days apart)	mg/L	20	AS5667.1-1998 and AS5667.10-1998
	Total Suspended Solids (TSS)		mg/L	30	
	Total Nitrogen (TN)		mg/L	-	
	Total Phosphorus (TP)		mg/L	-	
	E.Coli		cfu/100 ml ²	1000	
	pH		-	6.8 to 8.5	
	Total Dissolved Solids (TDS)		mg/L	2,500	

Note 1: For pH, an acceptable range is given. Outside this range is considered a limit exceedance.

Note 2: No limit is given for those analytes regulated under the nutrient discharge limits in condition 18

18. During time limited operations, the Works Approval Holder must not cause or allow emissions to land greater than the limits listed in Table 7.

Table 7: Blended Effluent from WWTP and RO Plant – nutrient discharge limits

Discharge point	Parameter	Limit	Units	Averaging period
Irrigation spray field (defined in Table 5)	Total Nitrogen (TN)	480	Kg/ha/year	Annual, pro-rata for the period of time limited operations
	Total Phosphorus (TP)	120		

19. The works approval holder must record the results of all monitoring activity required by condition 17.
20. The works approval holder must submit to the CEO a report on the time limited operations within 30 calendar days of the completion date of time limited operations or 30 calendar days before the expiration date of the works approval, whichever is the sooner.
21. The works approval holder must ensure the report required by condition 20 includes the following:
- a summary of the time limited operations, including timeframes and throughput
 - a summary of monitoring results obtained during time limited operations under condition 17;
 - Calculations showing the nutrient loading rates compared to the limits specified in Table 7;
 - a review of performance and compliance against the conditions of the works approval; and

- (e) where the manufacturer's design specifications and the conditions of this works approval have not been met, what measures will the works approval holder take to meet them, and what timeframes will be required to implement those measures; and
- (f) a summary of any complaints received under Condition 24 of this Works Approval

Emissions

- 22.** The Works Approval Holder must not cause any Emissions from the Works authorised through this Works Approval except for specified Emissions and general Emissions described in Column 1 of Table 3, subject to the exclusions, limitations or requirements specified in Column 2, of Table 3.

Table 8: Authorised Emissions table

Column 1	Column 2
Emission type	Exclusions/Limitations/Requirements
Specified Emissions	
Wastewater from the WWTP and RO plant - blended	Subject to compliance with conditions of this works approval
General Emissions	
Emissions which arise from undertaking the Works set out in Schedule 3, or Primary Activities set out in Schedule 4	<p>Emissions excluded from General Emissions are:</p> <ul style="list-style-type: none"> • Unreasonable Emissions; or • Emissions that result in, or are likely to result in, Pollution, Material Environmental Harm or Serious Environmental Harm; or • Discharges of Waste in circumstances likely to cause Pollution; or • Emissions that result, or are likely to result in, the Discharge or abandonment of Waste in water to which the public has access; or • Emissions or Discharges which do not comply with an Approved Policy; or • Emissions or Discharges which do not comply with prescribed standard; or • Emissions or Discharges which do not comply with the conditions in an Implementation Agreement or Decision; or • Emissions or Discharges the subject of offences under regulations prescribed under the EP Act, including materials discharged under the <i>Environmental Protection (Unauthorised Discharges) Regulations 2004</i>.

Record-keeping

- 23.** The Works Approval Holder must maintain accurate Books including
- (a) information, reports and data in relation to the Works
 - (b) the maintenance of infrastructure required to ensure that it is kept in good working order in accordance with Condition 14 of this Works Approval;
 - (c) complaints received under Condition 24 of this Works Approval; and

In addition, the Books must:

- (d) be legible;
- (e) if amended, be amended in such a way that the original and subsequent amendments remain legible or are capable of retrieval;
- (f) be retained for at least 3 years from the date the Books were made; and
- (g) be available to be produced to an Inspector or the CEO.

24. The Works Approval Holder must record the number and details of any complaints received by the Works Approval Holder relating to its obligations under this Works Approval and its compliance with Part V of the EP Act at the Premises, and any action taken by the Works Approval Holder in response to the complaint. Details of complaints must include:

- (a) an accurate record of the concerns or issues raised, for example a copy of any written complaint or a written note of any verbal complaints made;
- (b) the name and contact details of the complainant, if provided by the complainant;
- (c) the date of the complaint; and
- (d) the details and dates of the actions taken by the Works Approval Holder in response to the complaints.

25. The Works Approval Holder must comply with a Department Request within 14 days from the date of the Department Request or such other period as agreed to by the Inspector or the CEO.

Schedule 1: Maps

Premises

The Premises are shown in the map below.

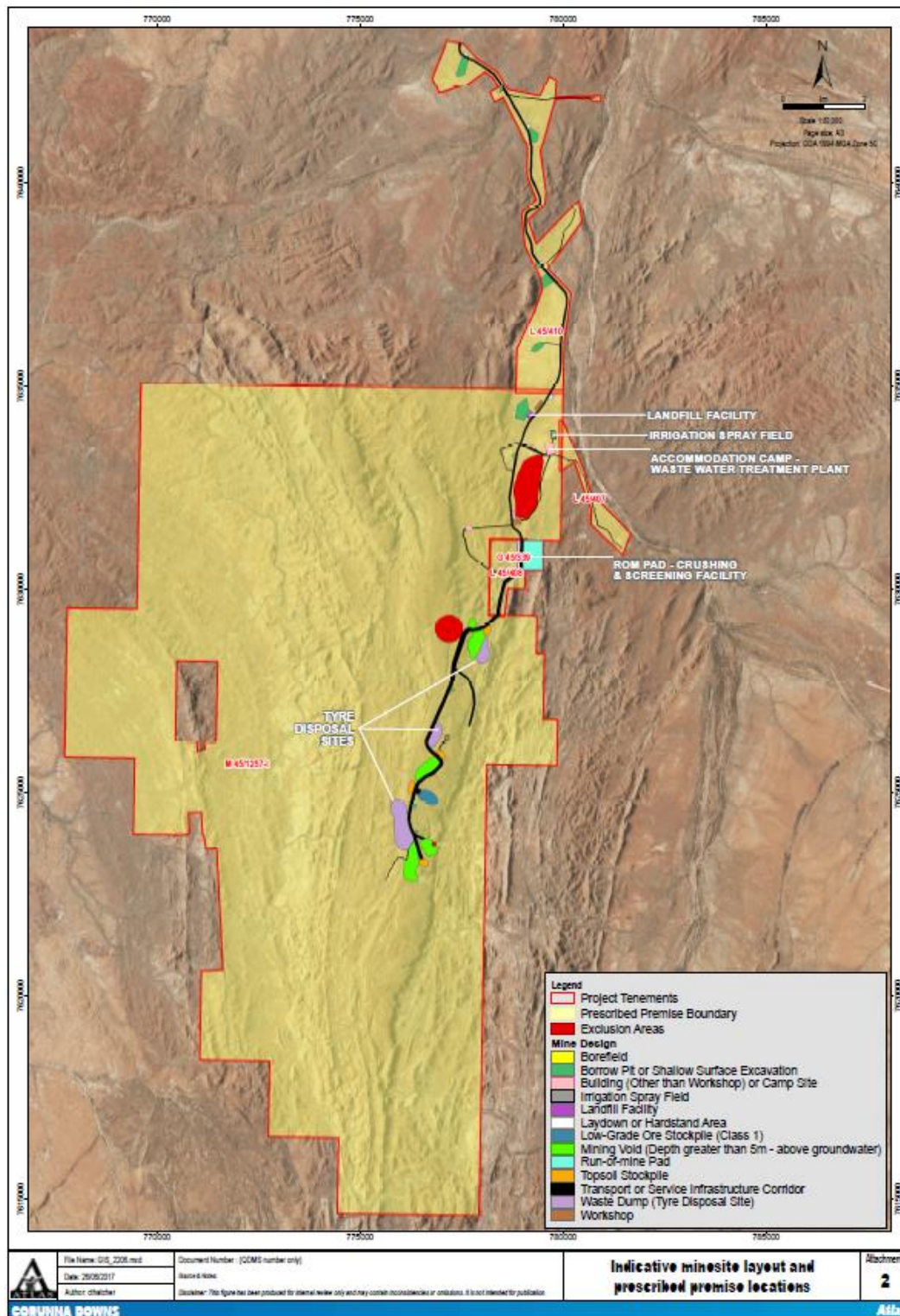


Figure 1: Premises layout

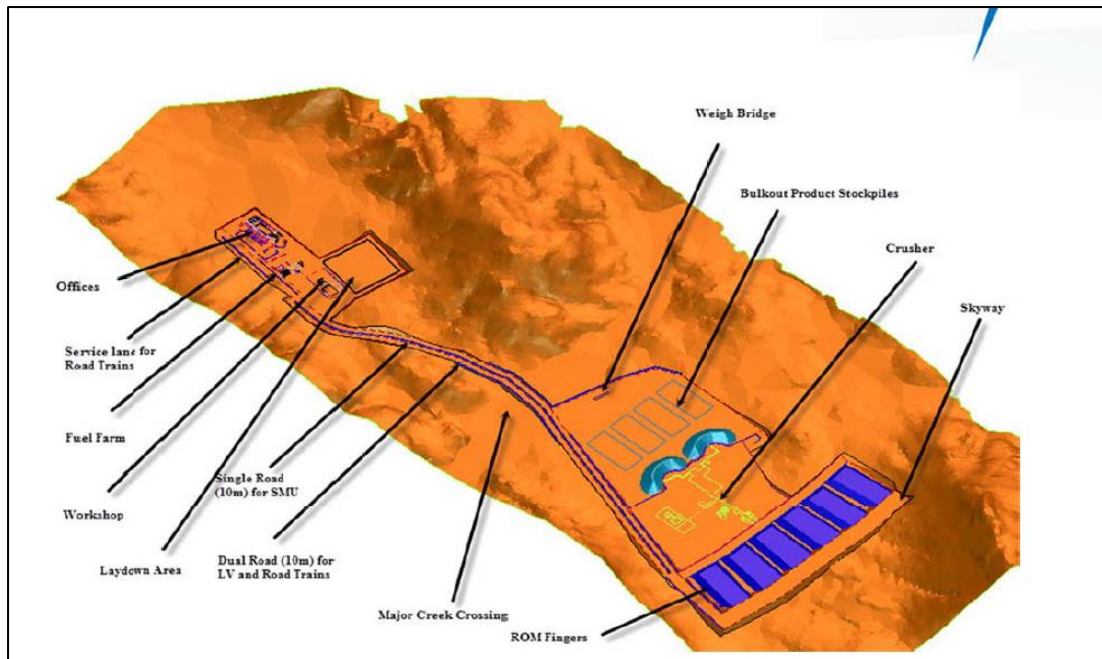


Figure 2: ROM pad layout

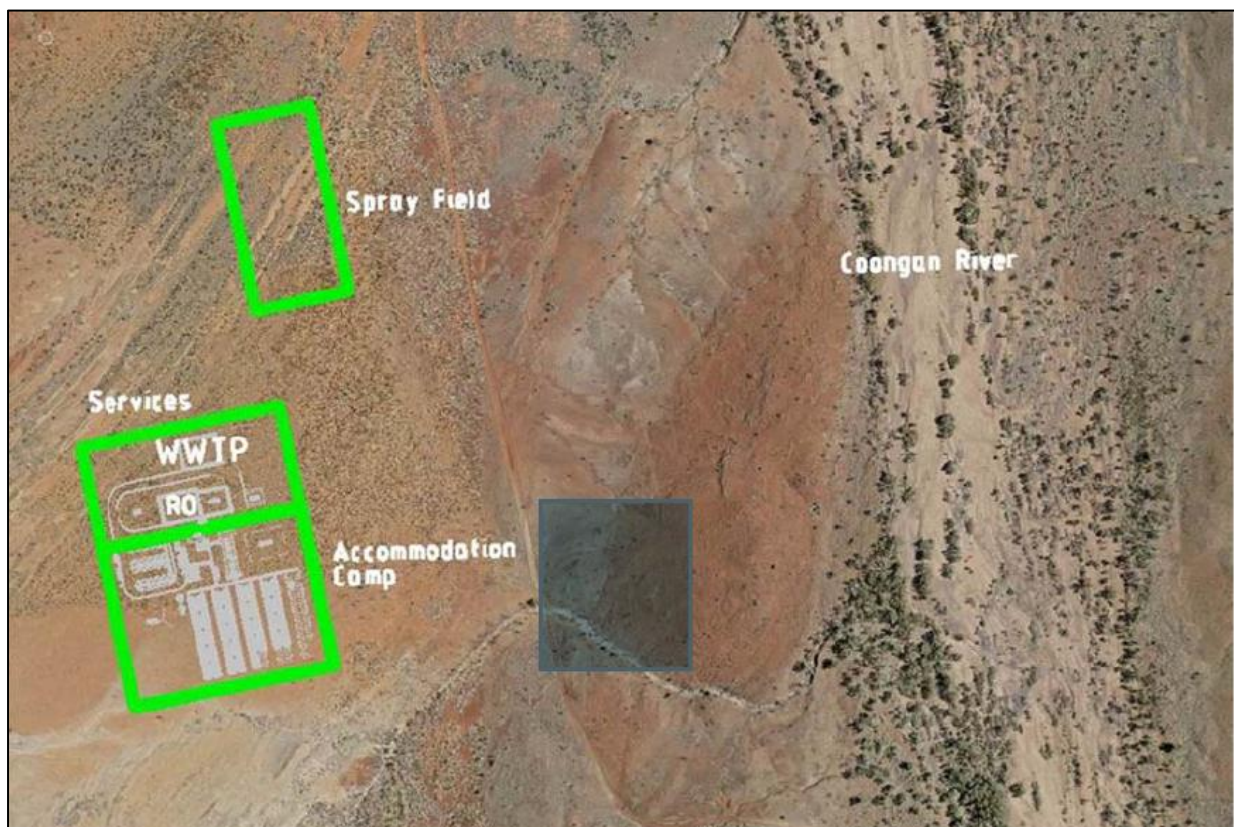


Figure 3: Waste water treatment plant layout

Schedule 2: Infrastructure and equipment

Table 9: Infrastructure and equipment requirements table

Column 1	Column 2	Column 3	Column 4
Infrastructure/ Equipment	Requirements (design and construction)	Requirements (operational)	Site plan reference
Crushing and screening plant	<p>1 x Feeder and Grizzly</p> <p>1 x Jaw (primary) Crusher</p> <p>2 x (secondary and tertiary) cone crusher</p> <p>2 x twin deck sizing screens</p> <p>Pan feeders</p> <p>2 x Radial Stackers</p> <p>2 x Cross belt samplers</p> <p>Weightometers</p> <p>Metal detection units</p> <p>Hydrocarbon storage in accordance with AS1940:2004 The Storage and Handling of Flammable and Combustible Liquids.</p> <p>Stormwater sedimentation basins will be installed on the ROM pad to manage a 1 in 5 year rain event before mobilisation of the crushing and screening plant. The basins will incorporate a rock armoured spillway to encourage settling of sediment and prevent erosion.</p> <p>Water spray units to be installed on the feed bin, at strategic conveyor transfer points and on stacker head chutes.</p>	<ul style="list-style-type: none"> • A mobile truck with water cannon is to be used to manage dust emissions on the ROM pad. • Water sprays used on the feed bin, strategic conveyor transfer points and stacker head chutes to control dust. • Hydrocarbons to be stored in accordance with AS1940:2004 The Storage and Handling of Flammable and Combustible Liquids. 	located 2km from the Coongan River as shown in figures 1 and 2 in schedule 1

Column 1	Column 2	Column 3	Column 4
Infrastructure/ Equipment	Requirements (design and construction)	Requirements (operational)	Site plan reference
Landfill facility	<p>Constructed in accordance with the <i>Environmental Protection (Rural Landfill) Regulations 2002</i>, including</p> <ul style="list-style-type: none"> • Located more than 100m from a waterbody • Located more than 500m any residential development (camp) • The base of the landfill to be separated from the highest level of the water table by at least 3m • Stormwater diversion structures to be constructed to divert runoff around and away from the facility • A fence around the boundary of the facility that is of sufficient height and strength to prevent access of cattle, horses and other fauna; prevents waste from being washed or blown outside the facility; and is secured by a lockable gate to prevent unauthorised access • The tipping area (landfill face) not exceeding 30m in length or 2m above ground level in height • A 3m wide fire break to be cleared around the boundary fence of the landfill • Fire control equipment (i.e. fire extinguishers to be located within the facility) 	<ul style="list-style-type: none"> • Ongoing management consistent with the requirements in Column 2. • Inert Type waste (i.e. tyres) to be disposed of within the active waste rock dumps (i.e Runway, Shark Gully and Spilt Rock waste rock dumps) 	As shown in figure 1 schedule 1

Wastewater treatment facility	<p>The wastewater treatment facility consists of two main components:</p> <ol style="list-style-type: none"> 1. A wastewater treatment plant comprising <ul style="list-style-type: none"> • Pump well • Balance tank • Anaerobic tank • Anoxic tank • Two aeration tanks • Clarifier tank • Settling tank • Waste activated sludge Tank. • Chlorine contact tank • Treated wastewater irrigation storage system (i.e. tanks) 2. An irrigation spray field (treated wastewater discharge area) consisting of discharge area of at least 1.4ha, sprinklers, signage and a perimeter fence at least 5m outside the discharge area. <p>The following controls will be installed:</p> <ul style="list-style-type: none"> • Flow meters to allow monitoring of influent and irrigation volumes. • Inline testing and sample ports to enable monitoring. • High level alarms (audible and visible). • Earthen bunding around the plant to contain run-off. • Evacuation sump and pump. 	<p>Operated in accordance with the Atlas Wastewater Treatment Plant Management Plan, Attachment 3AA (Wastewater Treatment Plant (WWTP) Management Plan: Compliance 950-HSE-PLN-0002 Revision 0) of the Corunna Downs Project Works Approval Application – Supplementary Documentation No. 179-LAH-EN-REP-0005 Revision 0.</p> <p>The Works Approval Holder is to ensure that all controls listed in Column 2 are maintained in good working order:</p> <p>The Works Approval Holder is to undertake daily inspections and checks of the wastewater treatment plant and irrigation spray field for the following:</p> <ul style="list-style-type: none"> • Discharge volume to the irrigation spray field • pH • Irrigation tank levels • Sprayfield outlets • Irrigation pumps <p>The Works Approval Holder will undertake monthly visual monitoring of the sprayfield to ensure:</p> <ul style="list-style-type: none"> • Evenness of treated effluent distribution to minimise the 	As shown in Figures 1, 2 and 3 in Schedule 1
-------------------------------	--	--	--

Column 1	Column 2	Column 3	Column 4
Infrastructure/ Equipment	Requirements (design and construction)	Requirements (operational)	Site plan reference
	<ul style="list-style-type: none"> • Above ground pipework. • Barricading or bollards. • Contingency tanks to allow for additional storage. • Fencing around the spray field perimeter (at least 5m from the edge of the discharge area) to prevent unauthorised access. 	<p>risk of waterlogging and associated impact on vegetation; and</p> <ul style="list-style-type: none"> • identify and rectify any irrigation generated run-off or discharge and associated impact on vegetation occurs outside the sprayfield. <p>The Works Approval Holder will undertake weed removal as required at the spray field.</p>	

Schedule 3: Works

At the time of assessment, Emissions and Discharges from the Works listed in Table 10 were considered in the determination of the risk and related Conditions for the Works Approval.

Table 10: Authorised Works

Works	Specifications/Drawings
Crushing and screening plant	<p>Target water moisture content of 5% for fines and 3.5% for lump will be achieved by the application of water sprays.</p> <p>Water sprays to be installed on the feed bin, strategic conveyor transfer points, and stacker head chutes.</p> <p>A mobile truck with a water cannon and/or spray bar will be used to manage dust emissions on the ROM pad.</p>
Wastewater Treatment Plant (WWTP)	<p>The WWTP is comprised of:</p> <ul style="list-style-type: none"> • Pump well • Balance tank • Anaerobic tank • Anoxic tank • Two aeration tanks • Clarifier tank • Settling tank • Waste activated sludge Tank. • Chlorine contact tank • Treated wastewater irrigation storage tanks (with a minimum capacity of two days) for storage prior to discharge by impact sprinklers on the designated spray field. <p>The sprayfield area will be fenced.</p> <p>The WWTP will be designed and operated in accordance with Atlas Wastewater Treatment Plant Management Plan, Attachment 3AA (Wastewater Treatment Plant (WWTP) Management Plan: Compliance 950-HSE-PLN-0002 Revision 0) of the Corunna Downs Project Works Approval Application – Supplementary Documentation No. 179-LAH-EN-REP-0005 Revision 0.</p>
Landfill	<p>Constructed in accordance with the <i>Environmental Protection (Rural Landfill) Regulations 2002</i>, including:</p> <ul style="list-style-type: none"> • Located more than 100m from a waterbody. • Located more than 500m any residential development (camp). • The base of the landfill to be separated from the highest level of the water table by at least 3m. • Stormwater diversion structures to be constructed to divert runoff around and away from the facility. • A fence around the boundary of the facility that is of sufficient height and strength to prevent access of cattle, horses and other fauna; prevents waste from being washed or blown outside the facility; and is secured by a lockable gate to prevent unauthorised access. • The tipping area (landfill face) not exceeding 30m in length or 2m above ground level in height.

	<ul style="list-style-type: none"> • A 3m wide fire break to be cleared around the boundary fence of the landfill. • Fire control equipment (i.e. fire extinguishers to be located within the facility). <p>Inert Type waste (i.e. tyres) to be disposed of within the active waste rock dumps (i.e. Runway, Shark Gully and Spilt Rock waste rock dumps).</p> <p>Once operational, the landfill will be managed in accordance with Atlas Landfill management Procedure Attachment 3AB (Landfill management Procedure 950-HSE-PLN-0020 Revision 1) of the Corunna Downs Project Works Approval Application – Supplementary Documentation No. 179-LAH-EN-REP-0005 Revision 0.</p>
--	--

Schedule 4: Primary Activities

At the time of assessment, Emissions and Discharges from the following Primary Activities were considered in the determination of the risk and related Conditions for the Premises. The Primary Activities are listed in Table 11.

Table 11: Primary Activities

Primary Activity	Premises design capacity
Category 5 – Processing or beneficiation of metallic or non-metallic ore: premises on which; <ul style="list-style-type: none"> a) metallic or non-metallic ore is crushed, ground, milled, or otherwise processed; or b) tailings from metallic or non-metallic ore are reprocessed ; or c) tailings or residue from metallic or non-metallic ore are discharged into a containment cell or dam 	5,000,000 tonnes per Annual Period
Category 85 – Sewage facility: premises – <ul style="list-style-type: none"> a) on which sewage is treated (excluding septic tanks b) from which treated sewage is discharged onto land or into waters 	45 cubic metres (m ³) per day treatment capacity ¹
Category 89 – Putrescible landfill sit: premises on which waste (as determined by reference to the waste type set out in the document entitled “Landfill Waste Classification and Waste Definitions 1996” published by the Chief Executive Officer as amended from time to time	450 tonnes per Annual Period

Note 1: total irrigation volume will be greater as approximately 15 m³ per day of RO brine will be added to the WWTP effluent

Infrastructure and equipment

The Primary Activity infrastructure and equipment situated on the Premises is listed in Table 5.

Table 12: Infrastructure and equipment

Infrastructure and equipment	Plan reference
Crushing and screening plant	As shown in figures 1 and 2 in schedule 1
Landfill facility	As shown in figure 1 schedule 1
Waste water treatment facility	As shown in Figures 1, 2 and 3 in Schedule 1

Site layout

The Primary Activity infrastructure and equipment is set out on the Premises in accordance with the site layout specified on the Premises map in Schedule 1.