



Works approval number	W6373/2020/1	
Works approval holder	Omya Australia Pty Ltd	
ACN	97 001 682 533	
Registered business address	Level 1, 280 Pacific Highway LINDFIELD NSW 2070	
DWER file number	DER2020/0000104	
Duration	28 July 2020 to	27 July 2023
Date of issue	28 July 2020	
Premises details	Omya Australia Pty Ltd 26-28 Tomlinson Road WELSHPOOL WA 6106 Lot 13, Diagram of Plan 8957 Certificate of Title Volume 1917 Folio 862	

Prescribed premises category description (Schedule 1, <i>Environmental Protection Regulations 1987</i>)	Assessed production / design capacity
Category 33: chemical blending or mixing: premises on which chemicals or chemical products are mixed, blended or packaged in a manner that causes or is likely to cause a discharge of waste into the environment.	35,040 tonnes per year

This works approval is granted to the works approval holder, subject to the attached conditions, on 28 July 2020, by:

Peter Knol
Senior Environmental Officer, Process Industries
An Officer delegated under section 20 of the *Environmental Protection Act 1986*

Interpretation

In this works approval:

- (a) the words 'including', 'includes' and 'include' in conditions mean "including but not limited to", and similar, as appropriate;
- (b) where any word or phrase is given a defined meaning, any other part of speech or other grammatical form of that word or phrase has a corresponding meaning;
- (c) where tables are used in a condition, each row in a table constitutes a separate condition;
- (d) any reference to an Australian or other standard, guideline or code of practice in this works approval means the version of the standard, guideline or code of practice in force at the time of granting of this works approval and includes any amendments to the standard, guideline or code of practice which may occur from time to time during the course of the works approval;
- (e) unless specified otherwise, any reference to a section of an Act refers to that section of the EP Act; and
- (f) unless specified otherwise, all definitions are in accordance with the EP Act.

Works approval conditions

The works approval holder must ensure that the following conditions are complied with:

Infrastructure and equipment

1. The works approval holder must construct and install the infrastructure listed in Table 1:
 - (a) in accordance with the corresponding design and construction / installation requirements; and
 - (b) at the corresponding infrastructure location,
as set out in Table 1.

Table 1: Design and construction / installation requirements

Infrastructure	Design and construction / installation requirements	Infrastructure location
Two (2) granulation processing plants	Modular plant including mixer, coating/granulation pan, and gas fired fluid bed dryer.	A1 and A2, as seen in Schedule 1 - Figure 1.
	Two Nederman cassette-type filter (dryer and general dust filter), fitted with alarm systems. Cleaning phase and status to be monitored electronically.	
	WAMFLO round silo dust collector with vertically mounted filter elements and air jet or mechanical vibrated cleaning system. Fitted with an alarm system. Cleaning phase and status is to be monitored electronically.	
	Alarm and broken bag detection system comprising of a differential pressure transmitter to measure the difference of the pressure on the clean and raw gas side of the filter. Measured and monitored in the plant control system and changes such as drop of the differential pressure below the set value is alarmed to alert operators to a problem with the bags / filter.	

Compliance reporting

2. The works approval holder must within 60 calendar days of an item or all items of infrastructure required by condition 1 being constructed:
 - (a) undertake an audit of their compliance with the requirements of condition 1
 - (b) prepare and submit to the CEO an Environmental Compliance Report on that compliance that is signed by a person authorised to represent the works approval holder and contains the printed name and position of that person.

Time limited operations

3. The works approval holder may only commence time limited operations for an item of infrastructure identified in condition 1 where the Environmental Compliance Report as required by condition 2 has been submitted by the works approval holder for that item of infrastructure.
4. The works approval holder may conduct time limited operations for an item of infrastructure specified in condition 1:
 - (a) for a period not exceeding 180 days from the day the works approval holder meets the requirements of condition 2 for that item of infrastructure; or

- (b) until such time as a licence for that item of infrastructure is granted in accordance with Part V of the *Environmental Protection Act 1986*;
whichever comes first.

Emissions and discharges

5. The works approval holder must ensure that the emissions specified in Table 2, are discharged only from the corresponding discharge point and only at the corresponding discharge point location.
6. The works approval holder must ensure that emissions from the discharge point listed in Table 2 for the corresponding parameter do not exceed the corresponding limit when monitored in accordance with condition 7.

Table 2: Point source emissions to air

Discharge point	Parameter	Limit (including units)	Discharge point location
A1 and A2	Particulate matter	50 mg/m ³	As seen in Schedule 1- Figure 1.

Monitoring

7. The works approval holder must monitor emissions in accordance with the requirements specified in Table 3 and record the results of all monitoring.

Table 3: Emissions and discharge monitoring

Discharge point	Monitoring location	Parameter and reporting units	Frequency	Averaging period	Sampling Method
A1 and A2	As seen in Schedule 1 - Figure 1.	Particulate matter in g/s and mg/m ³	Once within 30 days, after submission of the compliance report that includes the discharge points as stated in Table 2.	Stack test (minimum 60 minute average)	USEPA Method 5 or 17

8. The works approval holder must ensure that all non-continuous sampling and analysis undertaken pursuant to condition 7 is undertaken by a holder of a current accreditation from the National Association of Testing Authorities (NATA) for the methods of sampling and analysis relevant to the corresponding relevant parameter.

Stack monitoring reporting

9. The works approval holder must within 30 calendar days of the emission and discharge monitoring undertaken in accordance with condition 7 submit the stack testing results and the original stack testing reports to the CEO.

Records and reporting

10. The works approval holder must maintain accurate and auditable books including the following records, information, reports, and data required by this works approval:
 - (a) the works conducted in accordance with condition 1 of this works approval;
 - (b) any maintenance of infrastructure that is performed in the course of complying with condition 1 of this works approval;
 - (c) monitoring programmes undertaken in accordance with condition 7 of this works approval; and

- (d) complaints received under condition 12 of this works approval.
- 11.** The books specified under condition 10 must:
- (a) be legible;
 - (b) if amended, be amended in such a way that the original version(s) and any subsequent amendments remain legible and are capable of retrieval;
 - (c) be retained by the works approval holder for the duration of the works approval; and
 - (d) be available to be produced to an inspector or the CEO as required.
- 12.** The works approval holder must record the following information in relation to complaints received by the works approval holder (whether received directly from a complainant or forwarded to them by the Department or another party) about any alleged emissions from the premises:
- (a) the name and contact details of the complainant, (if provided);
 - (b) the time and date of the complaint;
 - (c) the complete details of the complaint and any other concerns or other issues raised; and
 - (d) the complete details and dates of any action taken by the works approval holder to investigate or respond to any complaint.

Definitions

In this works approval, the terms in Table 4 have the meanings defined.

Table 4: Definitions

Term	Definition
CEO	means Chief Executive Officer. CEO for the purposes of notification means: Director General Department administering the <i>Environmental Protection Act 1986</i> Locked Bag 10 Joondalup DC WA 6919 info@dwer.wa.gov.au
condition	means a condition to which this works approval is subject under section 62 of the EP Act.
Department	means the department established under section 35 of the <i>Public Sector Management Act 1994</i> and designated as responsible for the administration of Part V Division 3 of the EP Act.
Environmental Compliance Report	means a report to satisfy the CEO that the conditioned infrastructure and/or equipment have been constructed and/or installed in accordance with the works approval
EP Act	means the <i>Environmental Protection Act 1986</i> (WA).
EP Regulations	means the <i>Environmental Protection Regulations 1987</i> (WA).
mg/m ³	means cubic metres
NATA	means the (Australian) National Association of Testing Authorities.
Premises	refers to the premises to which this works approval applies, as specified at the front of this works approval and as shown in Figure 2 of Schedule 1 to this works approval.
time limited operations	refers to the operation of the infrastructure and equipment identified under this works approval that is authorised for that purpose, subject to the relevant conditions.
USEPA	means the United States Environmental Protection Agency
Works	refers to the works described in condition 1.
Works Approval	refers to this document, which evidences the grant of the works approval by the CEO under section 54 of the EP Act, subject to the conditions.
works approval holder	refers to the occupier of the premises being the person to whom this works approval has been granted, as specified at the front of this works approval.

END OF CONDITIONS

Schedule 1: Maps

Premises map

Figure 1: Site plan of the prescribed premises.

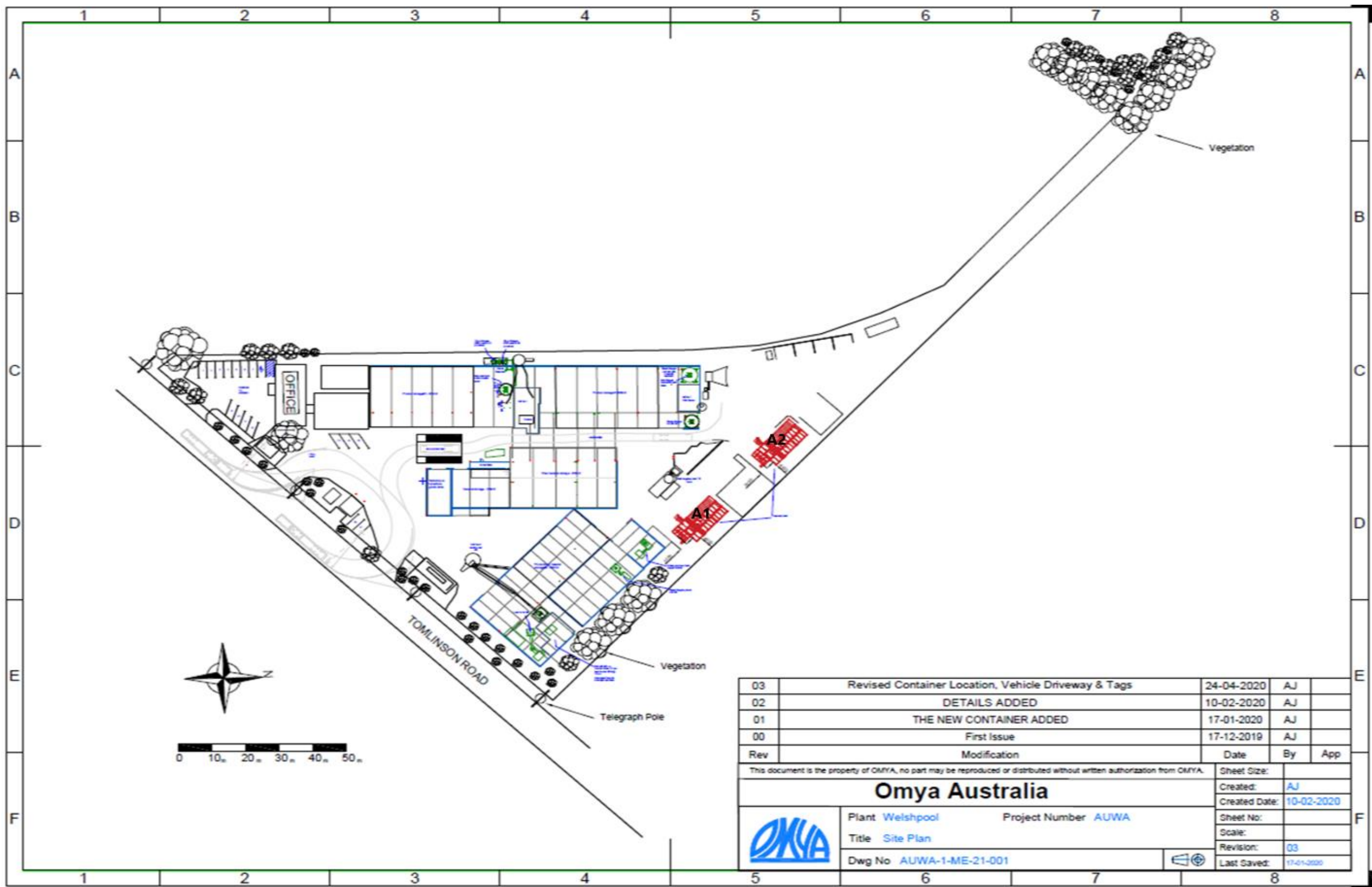


Figure 2: Map of the boundary of the prescribed premises



Figure 3: Granulation processing plant layout

