



Works approval number W6396/2020/1

Works approval holder Wattleup Sand Supplies Pty Ltd

ACN 610 926 728

Registered business address 18 Power Avenue
WATTLEUP WA 6166

DWER file number DER2020/000063

Duration 24/06/2020 to 23/06/2025

Date of issue 24/06/2020

Premises details Wattleup Sand Supplies
70 Torgoyle Road
Lot 17 on Diagram 29346
WATTLEUP, WA 6166

Prescribed premises category description (Schedule 1, <i>Environmental Protection Regulations 1987</i>)	Assessed production capacity
Category 62: Solid waste depot: premises on which waste is stored, or sorted, pending final disposal or re use.	5,000 tonnes per annual period

This works approval is granted to the works approval holder, subject to the attached conditions, on 24 June 2020, by:

Melissa Chamberlain
A/MANAGER WASTE INDUSTRIES
REGULATORY SERVICES

an officer delegated under section 20 of the *Environmental Protection Act 1986* (WA)

Interpretation

In this works approval:

- (a) the words 'including', 'includes' and 'include' in conditions mean "including but not limited to", and similar, as appropriate;
- (b) where any word or phrase is given a defined meaning, any other part of speech or other grammatical form of that word or phrase has a corresponding meaning;
- (c) where tables are used in a condition, each row in a table constitutes a separate condition;
- (d) any reference to an Australian or other standard, guideline or code of practice in this works approval means the version of the standard, guideline or code of practice in force at the time of granting of this works approval and includes any amendments to the standard, guideline or code of practice which may occur from time to time during the course of the works approval;
- (e) unless specified otherwise, any reference to a section of an Act refers to that section of the EP Act; and
- (f) unless specified otherwise, all definitions are in accordance with the EP Act.

NOTE: This works approval requires specific conditions to be met but does not provide any implied authorisation for other emissions, discharges, or activities not specified in this works approval.

Works approval conditions

The works approval holder must ensure that the following conditions are complied with:

Construction phase

Infrastructure and equipment

1. The works approval holder must:
 - (a) construct and/or install the infrastructure;
 - (b) in accordance with the corresponding design and construction requirements; and
 - (c) at the corresponding infrastructure location as set out in Table 1.

Table 1: Design and construction requirements

	Infrastructure	Design and construction requirements	Infrastructure location
1.	Mobile screening plant	Mobilise to site. Water sprays to be installed on conveyors and on the loading hopper grizzly bar at the entry to the screener.	Within screening area depicted in Schedule, 1 Figure 1.
2.	Workshop 1 and 2	Workshops to be installed on hardstands made of a material meeting permeability of not less than 1×10^{-9} m/s.	Workshop 1 and 2 depicted in Schedule 1, Figure 1.
3.	Water tanker	A truck with a water tank of at least 12,000 litres capacity located on-site.	N/A
4.	Drainage sumps	<ol style="list-style-type: none"> (a) Two drainage sumps to be constructed of compacted earth underlying a limestone armouring to allow the collection of run-off from the site. (b) Southwest drainage sump to have at least 447 kL capacity. (c) Southeast drainage sump to have at least 450 kL capacity. 	Drainage Sump as depicted in Schedule 1, Figure 1.
5.	Truck wash bay	<ol style="list-style-type: none"> (a) Truck wash bay hardstand to be made of a material meeting permeability of not less than 1×10^{-9} m/s. (b) Truck was bay to be bunded or designed in a way for wash water to be contained and directed to the southwest drainage sump via an oily water separator. 	Truck wash bay as depicted in Schedule, 1 Figure 1.
6.	Truck wash bay oily water separator	<ol style="list-style-type: none"> (a) To be installed at the truck wash bay to treat wash water prior to draining to the southwest drainage sump. (b) Oily water separator to be capable of producing treated water with a concentration of total recoverable hydrocarbons of 	Not depicted.

	Infrastructure	Design and construction requirements	Infrastructure location
		<15mg/L.	
7.	Diesel storage tank	10,000L self bunded storage tank to be installed on a hardstand made of a material meeting permeability of not less than 1×10^{-9} m/s.	Fuel as depicted in Schedule, 1 Figure 1
8.	Refueling pad and collection sump.	<p>(a) Refueling pad to be constructed on a hardstand made of a material meeting permeability of not less than 1×10^{-9} m/s.</p> <p>(b) Contaminated water or spills on the refueling pad to be contained through bunding and/or suitable gradients on the pad to allow water to be directed into a collection sump of 500L capacity.</p> <p>(c) Refueling pad collection sump to be made of a material meeting permeability of not less than 1×10^{-9} m/s.</p>	Not depicted.
9.	Sprinkler system for dust suppression	<p>(a) Sprinkler system consisting of 'knocker' sprinklers and poly pipe to be installed on site.</p> <p>(b) Sprinkler system to be placed along internal road and at each of the stockpiles to allow for dust suppression at these locations.</p>	Truck route and Stockpile 1 – 3 as depicted in Schedule 1, Figure 1.
10	Noise bunds / barriers	<p>(a) Installation of a noise bund or barriers around screening area and stockpile area.</p> <p>(b) Bunds or barriers are to be a minimum height of 1.5 meters above the exhaust height of the highest item of the screening plant.</p>	'Localised moveable barriers' and 'stockpiling/bunding' as depicted in Schedule 1, Figure 2.

Compliance reporting

2. The works approval holder must within 30 calendar days of an item of infrastructure or equipment required by condition 1 being constructed and/or installed:
 - (a) undertake an audit of their compliance with the requirements of condition 1; and
 - (b) prepare and submit to the CEO an Environmental Compliance Report on that compliance.

3. The Environmental Compliance Report required by condition 2, must include as a minimum the following:
 - (a) certification that the items of infrastructure or component(s) thereof, as specified in condition 1, have been constructed in accordance with the relevant requirements specified in condition 1; and
 - (b) be signed by a person authorised to represent the works approval holder and contains the printed name and position of that person.

Time limited operations phase

Commencement and duration

4. The works approval holder may only commence time limited operations for an item of infrastructure identified in condition 1 where the Environmental Compliance Report for that item of infrastructure as required by condition 2 has been submitted by the works approval holder.
5. The works approval holder may conduct time limited operations for an item of infrastructure specified in condition 6:
 - (a) for a period not exceeding 180 calendar days from the day the works approval holder meets the requirements of condition 4 for that item of infrastructure; or
 - (b) until such time as a licence for that item of infrastructure is granted in accordance with Part V of the *Environmental Protection Act 1986* and only where this occurs prior to 180 calendar days from the day the works approval holder meets the requirements of condition 4 for that item of infrastructure.

Infrastructure and equipment

6. During time limited operations, the works approval holder must ensure that the premises infrastructure listed in Table 2, and located at the corresponding infrastructure location, is maintained and operated in accordance with the corresponding operational requirements set out in Table 2.

Table 2: Infrastructure and equipment requirements during time limited operations

	Infrastructure / equipment	Operational requirements	Location
1.	Water tanker	(a) Operated to ensure that unsealed roads, operational surfaces and all Product and Waste stockpiles remain damp to prevent fugitive dust emissions; and (b) Operated to ensure targeted wetting occurs during tipping and when material handling such as reclaiming of material from stockpiles that have the potential to generate fugitive dust.	None specified.
2.	Screening plant	(a) The screening plant water sprays, fitted within the hopper and at the discharge point from the screener, are operated at all times while screening material; and (b) Shall only operate between 7:00am and 7:00pm Monday to Saturday, excluding public holidays.	Within screening area depicted in Schedule, 1 Figure 1,

3.	Sprinkler system for dust suppression	<p>(a) Operated when visible dust is generated from stockpile surfaces on the Premises;</p> <p>(b) Reticulated sprinklers must be capable of wetting down the entire surface of all stockpiles on the Premises that are subject to dust lift-off simultaneously or within a period of thirty minutes;</p> <p>(c) Spray reach and rate of flow of sprinklers must be sufficient to reach the top of all stockpiles that are subject to dust lift-off; and</p> <p>(d) Spray reach and rate of flow of sprinklers must be maintained in good working order.</p>	Truck route and Stockpile 1 – 3 as depicted in Schedule 1, Figure 1.
4.	Truck wash bay	All wash water must be contained within the bay and directed to the southwest drainage sump via an oily water separator.	Truck wash bay as depicted in Schedule, 1 Figure 1.
5.	Truck wash bay oily water separator	Oily water separator must be maintained in good working order.	Not depicted
6.	Drainage sumps	Drainage sumps must be maintained in good working order.	Drainage Sump as depicted in Schedule 1, Figure 1.
7.	Refueling pad collection sump	Refueling pad collection sump must be maintained in good working order.	Fuel as depicted in Schedule 1, Figure 1.
8.	Noise bunds / barriers	<p>Noise bunds / barriers to be in place during screening activities.</p> <p>Noise bunds / barriers to be maintained in good working order.</p>	Localised moveable barriers' and 'stockpiling/bunding' as depicted in Schedule 1, Figure 2

Waste acceptance

7. The Works Approval Holder must only accept onto the Premises waste of a waste type that:
- does not exceed the rate at which that waste is received; and
 - meets the relevant acceptance specification,
- as set out in Table 3.
8. The Works Approval Holder shall ensure that wastes accepted onto the Premises are only subjected to the processes set out in Table 3.

Table 3: Types of waste authorised to be accepted onto the premises

Waste type	Rate at which waste is received	Acceptance specification	Processes
Clean Fill	5000 tonnes per annual period	Limited to soils, rocks and unprocessed material as defined in the Landfill Waste Classification and Waste Definitions 1996 (as amended 2019).	Sorting, screening and stockpiling.
Inert waste type 1		Inert waste type I category waste as defined in the Landfill Waste Classification and Waste Definitions 1996 (as amended 2019). Waste containing asbestos must not be accepted.	

9. The works approval holder must ensure that where waste does not meet the waste acceptance criteria set out in condition 7, it is removed from the premises by the delivery vehicle or, where that is not possible, stored in a quarantined storage area or container and removed to an appropriately authorised facility as soon as practicable.
10. The Works Approval Holder must record the total amount of waste accepted onto the Premises, for each waste type listed in Table 4, in the corresponding unit, and for each corresponding time period, as set out in Table 4.

Table 4: Waste volumes accepted onto the Premises.

Waste Type	Unit	Time period
Clean fill	m ³ and calculated tonnes: Waste conversion factors are outlined in the <i>Waste Avoidance and Resource Recovery Amendment Regulations 2019</i> , as published in the Western Australian Government Gazette No.97 (28 June 2019).	Each load arriving at the Premises.
Inert Waste Type 1		

11. The Works Approval Holder must record the total amount of waste removed from the Premises, for each waste type listed in Table 5 in the corresponding unit, and for each corresponding time period set out in Table 5.

Table 5: Waste removed from the Premises

Waste Type	Unit	Time period
Waste type as defined in the Landfill Definitions	m ³	Each load leaving or rejected from the Premises.

Dust management

13. The Works Approval Holder must ensure that no visible dust generated from the primary activities crosses the boundary of the Premises.

Noise emission validation

14. Within 30 days of the commencement date of time limited operations, the Works Approval Holder must retain the services of a person qualified and experienced in the area of environmental noise assessment and who, by their qualifications and experience, is eligible to hold membership of the Australian Acoustical Society or the Australian Association of Acoustical Consultants to:
 - (a) investigate the nature and extent of noise emissions from the Premises;
 - (b) assess in accordance with the methodology required in the *Environmental Protection (Noise) Regulations 1997*, the compliance of the noise emissions from the primary activities, against the relevant assigned levels specified in those Regulations; and
 - (c) compile and submit to the Works Approval Holder within 60- days of the commencement date of time limited operations a report in accordance with Condition 14(a) and (b).
15. A report prepared pursuant to Condition 14(c) is to include:
 - (a) a description of the methods used for monitoring and/or modelling of noise emissions from the Premises;
 - (b) details and the results of the investigation undertaken pursuant to Condition 14(a);
 - (c) details and results of the assessment of the noise emissions from the Premises, against the relevant assigned levels in the *Environmental Protection (Noise) Regulations 1997* undertaken pursuant to Condition 14(b); and
 - (d) A detailed plan outlining actions and timeframes for implementation of appropriate mitigation measures, where compliance with the *Environmental Protection (Noise) Regulations 1997* has not been met.
16. The Works Approval Holder must submit to the CEO the report prepared pursuant to Condition 14(c) within 14 days of receiving it.

Compliance reporting

17. The Works Approval holder must submit to the CEO a report on the time limited operations within 30 days of the completion date of time limited operations.
18. The works approval holder must ensure the report required by condition 17 includes the following;
 - (a) An audit of their compliance with the conditions of this works approval during the time limited operations; and
 - (b) Input and output data collated in accordance with conditions 10 and 11.

Records and reporting (general)

19. The works approval holder must record the following information in relation to complaints received by the works approval holder (whether received directly from a

complainant or forwarded to them by the Department or another party) about any alleged emissions from the premises:

- (a) the name and contact details of the complainant, (if provided);
- (b) the time and date of the complaint;
- (c) the complete details of the complaint and any other concerns or other issues raised; and
- (d) the complete details and dates of any action taken by the works approval holder to investigate or respond to any complaint.

20. The works approval holder must maintain accurate and auditable books including the following records, information, reports, and data required by this works approval:

- (a) the works conducted in accordance with condition 1;
- (b) any maintenance of infrastructure that is performed in the course of complying with condition 6;
- (c) monitoring programmes undertaken in accordance with conditions 10 and 11; and
- (d) complaints received under condition 19.

21. The books specified under condition 20 must:

- (a) be legible;
- (b) if amended, be amended in such a way that the original version(s) and any subsequent amendments remain legible and are capable of retrieval;
- (c) be retained by the works approval holder for the duration of the works approval; and
- (d) be available to be produced to an inspector or the CEO as required.

Definitions

In this works approval, the terms in Table 6 have the meanings defined.

Table 6: Definitions

Term	Definition
annual period	a 12 month period commencing from 1 July until 30 June of the immediately following year.
Asbestos	means the asbestiform variety of mineral silicates belonging to the serpentine or amphibole groups of rock-forming minerals and includes actinolite, amosite, anthophyllite, chrysolite, crocidolite, tremolite and any mixture containing 2 or more of these.
books	has the same meaning given to that term under the EP Act.
CEO	means Chief Executive Officer. CEO for the purposes of notification means: Director General Department administering the <i>Environmental Protection Act 1986</i> Locked Bag 10 Joondalup DC WA 6919 info@dwer.wa.gov.au
Clean fill	has the meaning defined in the Landfill Definitions; “Landfill Waste Classification and Waste Definitions 1996” published by the Chief Executive Officer of the Department of Environment as amended from time to time.
Department	means the department established under section 35 of the <i>Public Sector Management Act 1994</i> and designated as responsible for the administration of Part V Division 3 of the EP Act.
discharge	has the same meaning given to that term under the EP Act.
emission	has the same meaning given to that term under the EP Act.
Environmental Compliance Report	means a report to satisfy the CEO that the conditioned infrastructure and/or equipment has been constructed and/or installed in accordance with the works approval.
EP Act	<i>Environmental Protection Act 1986 (WA)</i> .
EP Regulations	<i>Environmental Protection Regulations 1987 (WA)</i> .
Inert waste type 1	has the meaning defined in the Landfill Definitions; “Landfill Waste Classification and Waste Definitions 1996” published by the Chief Executive Officer of the Department of Environment as amended from time to time.

Term	Definition
premises	the premises to which this licence applies, as specified at the front of this licence and as shown on the premises map (Figure 1) in Schedule 1 to this works approval.
prescribed premises	has the same meaning given to that term under the EP Act.
time limited operations	refers to the operation of the infrastructure and equipment identified under this works approval that is authorised for that purpose, subject to the relevant conditions.
waste	has the same meaning given to that term under the EP Act.
works approval	refers to this document, which evidences the grant of the works approval by the CEO under section 54 of the EP Act, subject to the conditions.
works approval holder	refers to the occupier of the premises being the person to whom this works approval has been granted, as specified at the front of this works approval.

END OF CONDITIONS

Schedule 1: Maps

Premises maps

The boundary of the prescribed premises is shown in the map below (Figure 1).



Figure 1: Map of the boundary of the prescribed premises

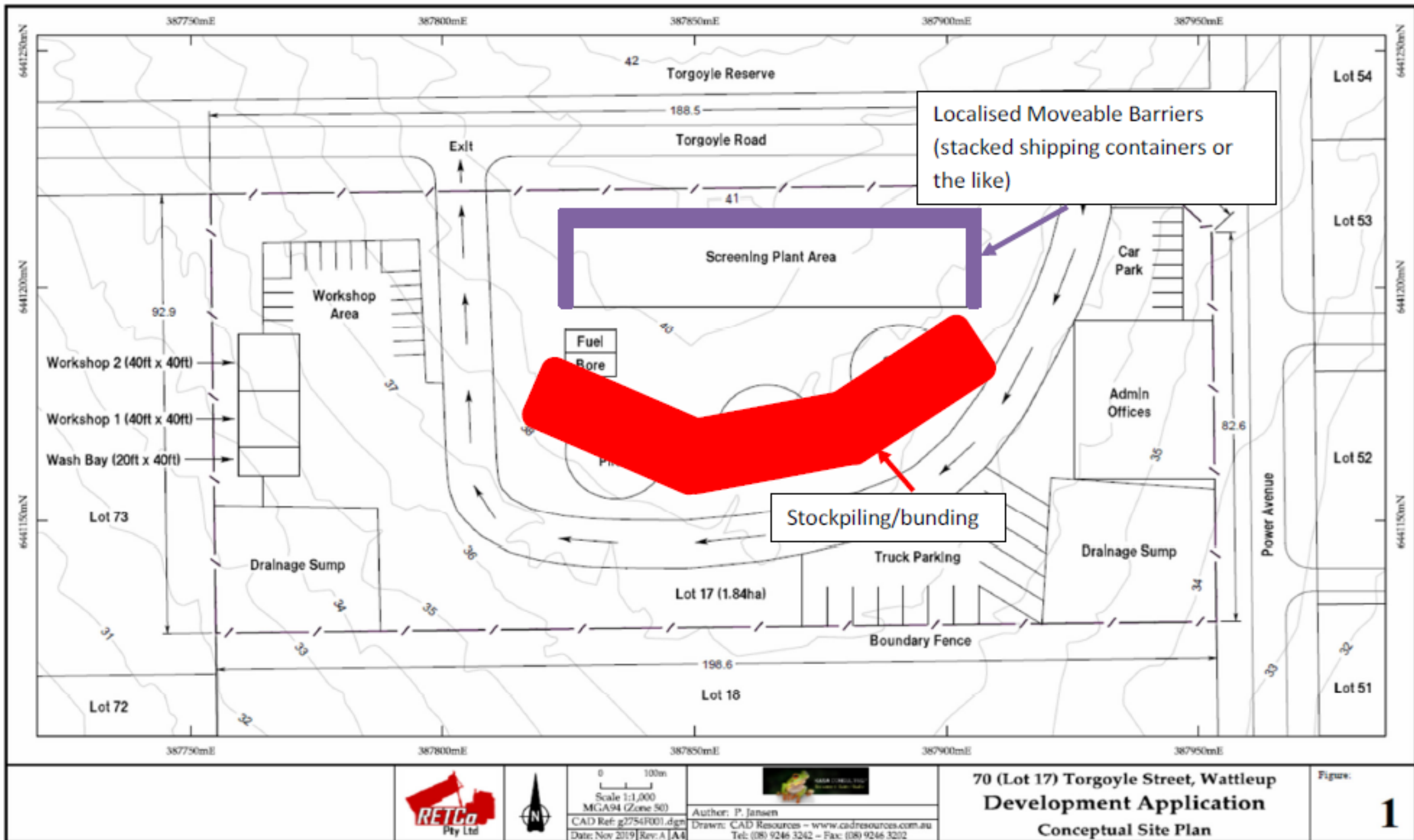


Figure 2: Location and layout of noise barriers/bund