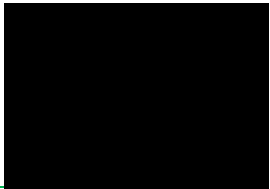




**CANNING VALE WASTE COMPOSTING
FACILITY ODOUR FIELD ASSESSMENTS –
2021 ANNUAL COMPLIANCE REPORT**

**RESOURCE RECOVERY GROUP:
CANNING VALE CENTRE**



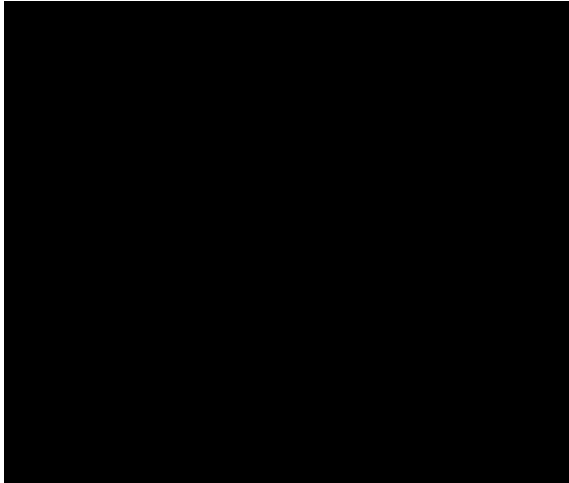
Resource Recovery Group: Canning Vale Centre

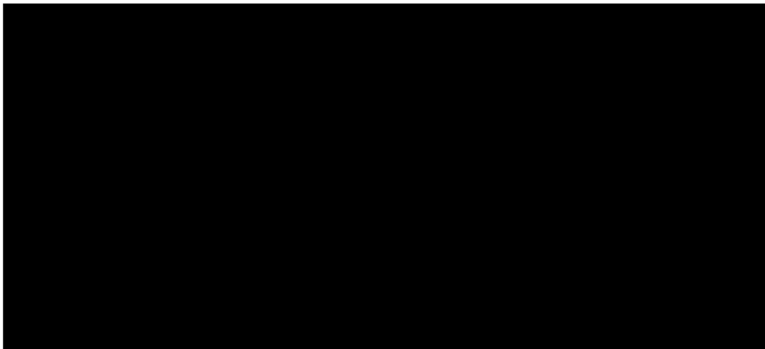
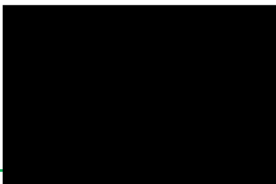
Bannister Road
Canning Vale, Western Australia 6155

Prepared for: **Southern Metropolitan Regional Council T/a
Resource Recovery Group**



Project Ref: **EAQ-22001**
February 2022





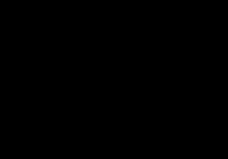
Report Revision(s)

Version(s)	Description	Date	Author(s)	Reviewer(s)
Draft_0.0	Internal Review	09.02.2022	[Redacted]	DSB
Final	Released to Client	09.02.2022	[Redacted]	

Approved for Release

Name	Position	File Reference
[Redacted]	[Redacted]	EAQ22001-SMRC-RRG Canning Vale Centre Annual OFA Compliance Report_20220209

Signature



This document, its content and intellectual property is the property of Environmental & Air Quality Consulting Pty Ltd (EAQ). The document may only be used for the purposes for which it was commissioned. Distribution of this document in full, or part thereof is not permitted without the permission of EAQ and/or the Client. Unauthorised copying or use of this document is prohibited.



Contents

1	Background & Scope	5
2	Terms & Definitions.....	6
3	OFA Compliance Details	7
3.1	Compliance Assessment Objective	7
3.2	Compliance Methods.....	7
3.3	CVC Operational Processes for Current Annual Compliance Period	10
4	OFA Results Summary	12
5	Summary & Comparison to Previous Annual Period	17

Figures

Figure 3-1: Canning Vale Centre Site Layout, Odour Source Origins & Descriptors	9
---	---

Tables

Table 3-1: Canning Vale CVC Operational Process Details	10
Table 3-2: Waste Composting Facility Measured Biofilter Odour Emissions & Process Parameters	11
Table 4-1: Field Odour Assessment Results Summary (March 2021 – February 2022).....	13



1 Background & Scope

[REDACTED] was engaged by the Southern Metropolitan Regional Council trading as Resource Recovery Group (RRG) to compile an Annual Report summarising its Canning Vale Centre (CVC) scheduled Odour Field Assessment (OFA) compliance works over the most recent annual compliance period.

The scheduled CVC OFA compliance works involves the observation of the presence, intensity and frequency of ground level odours offsite of the CVC by a panel of field assessors that have been calibrated for their odour sensitivity according to the Australian/New Zealand Standard “*Stationary source emissions, Determination of odour concentration by dynamic olfactometry*” (AS/NZS4323.3:2001). The intensity of the odours observed are ranked according to the German VDI Standard 3940 Part 3 “*Measurement of odour impact by field inspection, Determination of odour intensity and hedonic odour tone*”.

The CVC site has three primary processes and associated process areas:

- i. Materials Recovery Facility (MRF) of recyclables, handling and distribution;
- ii. Green Waste Facility (GWF) receivables, handling and processing and distribution; and
- iii. Waste Composting Facility (WCF) Waste Transfer Building of FOGO and municipal solid wastes (kerb side collections).

Of primary consideration are the GWF and WCF with respect to observable offsite odours. Although included in the OFA design, the MRF odours are not considered to be a risk for offsite odour impacts given the very low odour concentrations within the MRF. EAQ’s trained and calibrated OFA assessors have extensive experience in assessing odours from the RRG’s CVC and in particular the ability to discern the differing odour characters from the MRF, GWF and WCF processes.

OFA’s are undertaken monthly.

The Current Reporting period for this 2021 Annual Report is March 2021 to February 2022.

This current reporting period will be compared to the previous annual period of March 2020 to February 2021.



2 Terms & Definitions

“Assessment Area” refers to the defined area for the specific task in hand. The size and shape depend on the task and on the number and type of odour sources whose impact range is being assessed.

“Assessor” somebody who participates in odour testing.

“CVC” refers to the Southern Metropolitan Regional Council’s Regional Resource Recovery Centre located on Bannister Road in Canning Vale. Perth Western Australia, which is the odour source under investigation.

“OFA” means Field-Based Ambient Odour Intensity Assessment.

“Measurement Cycle” refers to the time required for a single measurement at a measurement point (10 minutes).

“Measurement Day” refers to the day on which a survey or surveys was undertaken.

“Measurement Point” refers to the panel members’ position at which a single measurement is carried out. For a plume measurement the measurement point is identified at an approximate point of intersection of grid lines.

“Odour” sensation perceived by means of the olfactory organ in sniffing certain volatile substances.

“Odour Intensity” refers to the strength of odour sensation caused by the olfactory stimulus.

“Odour Recognition (in ambient air)” odour sensation in ambient air that allows positive identification of the odour type.

“Panel Members” refer to person/s (calibrated assessor/s) making up the panel.

“Percentage Odour Time” refers to the total times/intervals which the odour is recognizable during a measurement cycle at a single measurement point.

“Single Measurement” procedure to obtain recorded observations at a given moment at a given measurement point necessary to determine absence or presence of recognizable odour.

“Single Measurement Duration” time required to conduct a single measurement. Note 1: The single measurement duration is 10 min (60 observations) for a stationary plume method. A single measurement duration of at least ten minutes is required in order to obtain a representative statement with at least 80 % certainty on the odour situation within an hour.

“Survey Period” refers to the period in which all single measurements are carried out, e.g. from December to April, July to December.



3 OFA Compliance Details

3.1 Compliance Assessment Objective

OFA compliance assessments undertaken downwind of the RRG CVC are based on the German Standard VDI 3940 where the standard prescribes the methods by which field assessors (panel members) determine, define and document observed ground level odours and the manner in which the determination of these odours is defined in relation to odour character, frequency of odours observed and the odour intensity of those individual observations as a quantitative scale of measure.

EAQ undertakes these OFAs on behalf of the RRG following the VDI 3940 Plume Method. ^[1]

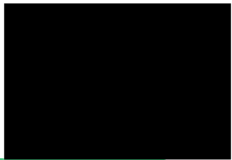
The objective of each monthly OFA is to demonstrate compliance with the control and mitigation of offsite odour impacts from activities undertaken at the RRG CVC. In achieving this offsite odour impacts observed will be less than the ambient odour assessment criterion as follows:

- percentage odour times at each discrete assessment location do not exceed an odour intensity ≥ 2 for $\geq 20\%$ of the measurement cycle.

3.2 Compliance Methods

Client:	RRG	
Site of Assessment:	Canning Vale Centre (CVC)	
Compliance Period:	March 2021 – February 2022	
Survey Dates:	March 30 th 2020	March 12 th 2021
	April 29 th 2020	14 th April 2021
	May 19 th 2020	13 th May 2021
	June 19 th 2020	11 th June 2021
	July 28 th 2020	20 th July 2021
	August 21 st 2020	15 th August 2021
	September 11 th 2020	20 th September 2021
	October 12 th 2020	29 th October 2021
	November 28 th 2020	19 th November 2021
	December 15 th 2020	15 th December 2021
	January 11 th 2021	10 th January 2022
	February 19 th 2021	9 th February 2022
Assessment Areas:	1, 2, 3 & 4	
Laboratory Calibration Type:	n-butanol	
Field Inspection Method Standard:	VDI 3940 (Part 2)	
Description of Standard:	Measurement of the impact frequency of recognizable odours Plume measurement	
Field Inspection Method Standard:	VDI 3940 (Part 3)	
Description of Standard:	Determination of odour intensity and hedonic odour tone	
Exceptions:	VDI 3940 (Part 3). Hedonic odour tone not assessed	

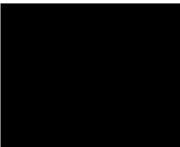
^[1] Measurement of odour impact by field inspection – Measurement of the impact frequency of recognizable odours Plume measurement. VDI 3940 Part 2. ICS 13.040.20.



Assessment Area_1	
Single Measurement Locations	1 – Cnr. Dundee Street & Beasley Road
	2 – Beasley Road (middle)
	3 – Cnr. Beasley Road & Hollingsworth Way
	4 – Hollingsworth Way (middle)
	5 – Cnr. Hollingsworth Way & Roe Hwy Footpath
	6 – Roe Highway Footpath (middle)
	7 – Cnr. Roe Hwy & Dundee Street
	8 – Dundee Street (middle)
	9 – Cluelow Rise (cul-de-sac)
	10 – Harwood Rise (on elbow)
	11 – Capill Corner (cul-de-sac)
	12 – Noreat Place
Assessment Area_2	
Single Measurement Locations	1 – Blaise Court
	2 – Hollingsworth Way (middle)
	3 – Cnr. Beasley Road & Hollingsworth Way
	4 – Cnr. Beasley & Timbrell
	5 – Timbrell Way
	6 – Timbrell Way
	7 – Cnr. Timbrell & McGuinness
	8 – Cnr. McGuinness & Beasley
	9 – Cnr. Beasley & Merrifield
	10 – Cnr. Merrifield & Roe Hwy
	11 – Sellen Court
	12 – Cnr. Orrock & Sellen Court
Assessment Area_3	
Single Measurement Locations	1 – Cnr. Merrifield & Roe Hwy
	2 – Merrifield (middle)
	3 – Cnr. Beasley & Merrifield
	4 – Beasley
	5 – Cnr. Beasley & Merrifield
	6 – Merrifield (middle)
	7 – Cnr. Merrifield & Roe Hwy
	8 – Merrifield (middle)
	9 – Stenton Corner
	10 – Bosworth Place
Assessment Area_4	
Single Measurement Locations	1 – Cnr. Merrifield & Roe Hwy
	2 – Cnr. Beasley & Merrifield
	3 – Cnr. South Street & Darian Drive
	4 – Cnr. Darian Drive & Trident Terrace
	5 – Trident Terrace (middle)
	6 – Cnr. Trident Terrace & Plover Drive
	7 – Cnr. Arlington & Vahland
	8 – Arlington Drive Elbow
	9 – Cnr. Vahland & South Street
Odour Key Descriptors (Quality):	
A – Cardboard-Weak Rubbish Bin Odour (MRF Origin)	
B - Dry Cut Grass, Tobacco (GWF origin)	
C – Cool, Pine-Solvent, Garden Compost (WCF Bio’s 3 & 4)	



Figure 3-1: Canning Vale Centre Site Layout, Odour Source Origins & Descriptors



3.3 CVC Operational Processes for Current Annual Compliance Period

The CVC WCF has been undergoing a refurbishment and maintenance period that has encompassed the annual compliance period. As a result the WCF has not been receiving putrescible waste streams as per previous annual compliance periods, instead receiving Food Organics Garden Organics Wastes solely for the purpose of receivals and transfer to an alternate waste facility.

The WCF has not been processing and composting putrescible wastes during the current annual compliance period. Consequently, Biofilters 1 and 2 are no longer operational and were not operational during the compliance period.

The following Table summarises the monthly operational process details as reported in the monthly OFA reports.

Table 3-1: Canning Vale CVC Operational Process Details

Waste Compost Facility (WCF)	Materials Recovery Facility (MRF)
<ul style="list-style-type: none"> • > 1600hrs; < 0800hrs - after hours (no receivals); • > 0800hrs; < 1600hrs - business as usual; • No process odour observed outside of the Transfer Building; • No leachate odours onsite; and • No odour complaints recorded. 	<ul style="list-style-type: none"> • > 1600hrs; < 0800hrs - after hours (no receivals); and; • > 0800hrs; < 1600hrs - business as usual.
	Green Waste Facility (GWF)
	<ul style="list-style-type: none"> • 1600hrs; < 0800hrs - after hours (no receivals); and; • > 0800hrs; < 1600hrs - business as usual.

Table 3-2 below lists the measured odour concentrations into each biofilter fan area, the treated biofilter odour concentrations emitted from each biofilter fan area, back pressures into each biofilter fan area and delivered relative humidity into each biofilter fan area.

Yellow highlighted cells depict those Fan Areas where the Biofilter Surface Odour Concentration exceeded the ≤ 500 odour unit Limit, and where the Inlet Relative Humidity was < 85% as per the ≥ Limit required, and:

- Where the outlet (OUT) odour concentration exceeds the inlet (IN) odour concentration the corresponding odour destruction efficiency (%) is negative. These negative results have been excluded from **Table 3-2** since they do not represent a “real” result;
- An updated operational licence (27 November 2020) allows the RRG to exclude monthly odour sampling and testing for non-operational biofilters where those biofilters have been non-operational for periods of 28 consecutive days or longer; and
- July 2021 compliance period for the CVC WCF Biofilters was re-assessed due to exceedances measured during the normal July testing period.



Table 3-2: Waste Composting Facility Measured Biofilter Odour Emissions & Process Parameters

Fan	March 2021			April 2021			July 2021			July Re-Test			October 2021			November 2021			December 2021			January 2022		
	IN	OUT	Destruct	IN	OUT	Destruct	IN	OUT	IN	IN	Destruct	IN	OUT	Destruct	IN	OUT	Destruct	IN	OUT	Destruct	IN	OUT	Destruct	
	(ou)	(ou)	(%)	(ou)	(ou)	(%)	(ou)	(ou)	(ou)	(ou)	(ou)	(ou)	(ou)	(ou)	(ou)	(ou)	(ou)	(ou)	(ou)	(ou)	(ou)	(ou)	(ou)	
111	830	250	69.9%	1,300	270	79.2%	5,400	2,700	50.0%	-	30	-	1,400	140	90.0%	2,700	47	98.3%	-	-	-	-	-	-
112	1,300	500	61.5%	1,200	300	75.0%	4,300	1,700	60.5%	-	47	-	1,500	120	92.0%	2,500	100	96.0%	1,400	51	96.4%	880	64	92.7%
109	640	140	78.1%	540	43	92.0%	5,000	260	94.8%	-	260	-	1,200	110	90.8%	-	-	-	-	-	-	810	190	76.5%
110	900	210	76.7%	640	67	89.5%	-	-	-	900	36	96.0%	1,100	96	91.3%	-	-	-	1,100	87	92.1%	-	-	-
Fan	Pressure	Relative Humidity	Pressure	Relative Humidity	Pressure	Relative Humidity	Pressure	Relative Humidity	Pressure	Relative Humidity	Pressure	Relative Humidity	Pressure	Relative Humidity	Pressure	Relative Humidity	Pressure	Relative Humidity	Pressure	Relative Humidity	Pressure	Relative Humidity		
	(kPa)	(%RH)	(kPa)	(%RH)	(kPa)	(%RH)	(kPa)	(%RH)	(kPa)	(%RH)	(kPa)	(%RH)	(kPa)	(%RH)	(kPa)	(%RH)	(kPa)	(%RH)	(kPa)	(%RH)	(kPa)	(%RH)		
111	1.13	98.39%	1.35	100.00%	1.70	96.50%	-	-	2.23	89.65%	0.11	89.36%	-	-	-	-	-	-	-	-	-	-		
112	0.83	94.49%	1.10	98.41%	1.30	96.46%	-	-	> 4	94.16%	> 4	92.15%	2.55	99.17%	1.90	96.10%	-	-	-	-	-	-		
109	1.58	100.00%	1.42	95.70%	0.98	99.19%	-	-	1.58	87.19%	-	-	-	-	0.50	98.40%	-	-	-	-	-	-		
110	1.82	97.61%	1.95	100.00%	-	-	-	-	2.14	87.36%	-	-	2.20	97.48%	-	-	-	-	-	-	-	-		

“-” denotes that samples were not collected due to shut-down of sampling area

“n/c” denotes unable to be calculated as a “real” result



4 OFA Results Summary

The results of the Field-Based Ambient Odour Intensity Assessments (OFAs) yield statistical data which is compared to the odour criterion to determine if observed odours are considered acceptable, and combined into pie-charts that provide a visual interpretation of the observations in the form of OFA “Maps”.

Table 4-1 lists each Assessment Area, corresponding Single Measurement Points within each Assessment Area and the statistical data from each OFA to include the Percentage Odour Time of odour intensity observations ≥ 2 , the maximum observed odour intensity at that Measurement Point and the average odour intensity for that Measurement Point.

Where individual cells are **highlighted in Yellow**, these highlighted cells depict those measurement days where odours were observed offsite of the CVC.

Following Table 4-1 those OFAs where odours were observed have been presented as illustrative Maps (**Figures**) with summary pie graphs for each measurement point.

All monthly OFAs that returned a nil result are not illustrated herein since no offsite odour from the CVC was observed.

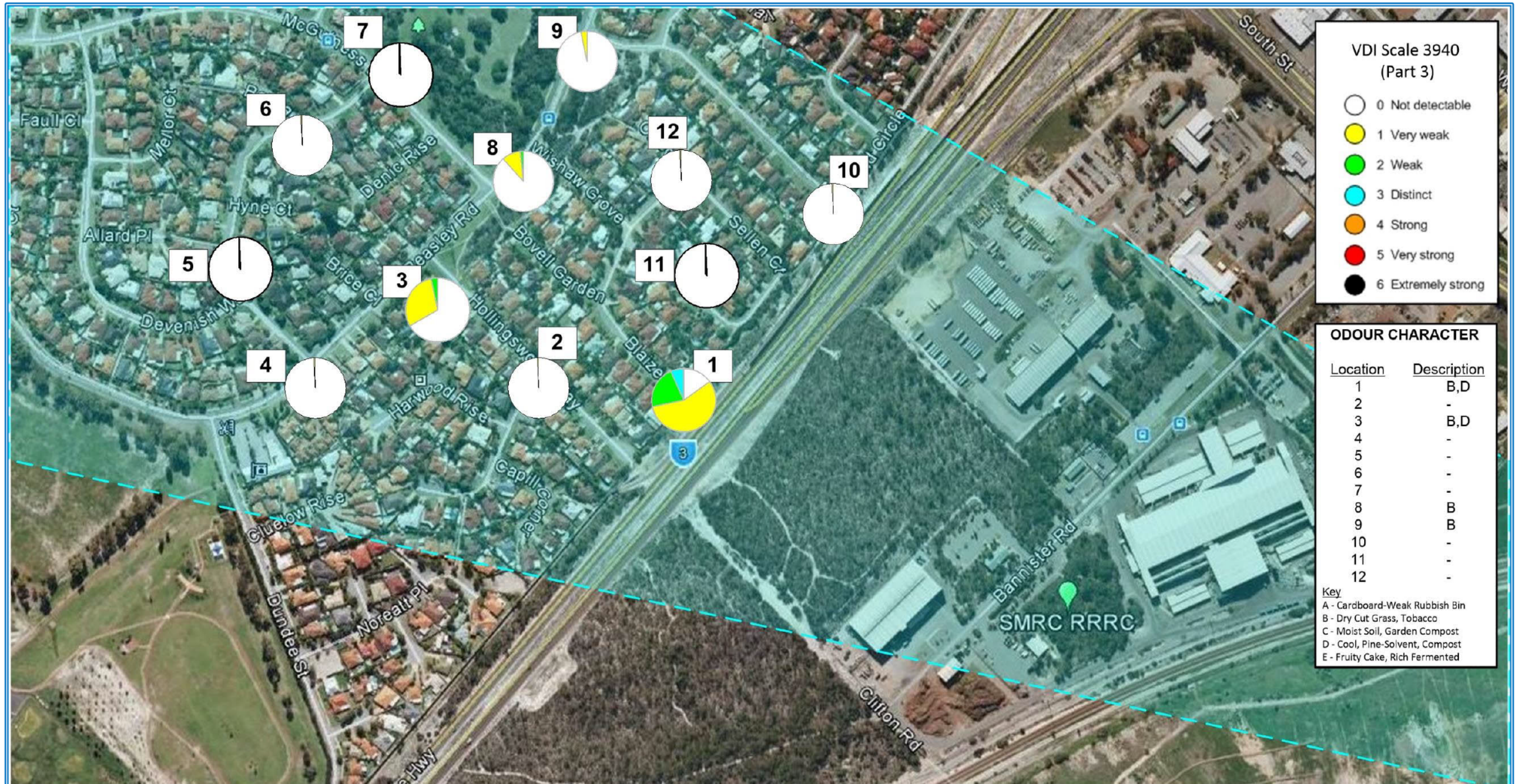


Table 4-1: Field Odour Assessment Results Summary (March 2021 – February 2022)

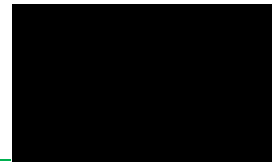
RRG CVC - Field Based Ambient Odour Intensity Assessments		Friday, 12 March 2021			Wednesday, 14 April 2021			Thursday, 13 May 2021			Friday, 11 June 2021		
		SE-SSE - Winds from 0900AM			E, ESE, SE Winds from 0700AM			E, ESE Winds from 0800AM			E, ESE Winds from 0700AM		
Street Location	I.D.	ave.	max	≥2	ave.	max	≥2	ave.	max	≥2	ave.	max	≥2
Cnr. Dundee Street & Beasley Road	1							-	0	0.0%	-	0	0.0%
Beasley Road (middle)	2							-	0	0.0%	-	0	0.0%
Cnr. Beasley Road & Hollingsworth Way	3							-	0	0.0%	-	0	0.0%
Hollingsworth Way (middle)	4							-	0	0.0%	-	0	0.0%
Cnr. Hollingsworth Way & Roe Hwy Footpath	5							-	0	0.0%	-	0	0.0%
Roe Highway Footpath (middle)	6							-	0	0.0%	-	0	0.0%
Cnr. Roe Hwy & Dundee Street	7							-	0	0.0%	-	0	0.0%
Dundee Street (middle)	8							-	0	0.0%	-	0	0.0%
Cluelow Rise (cul-de-sac)	9							-	0	0.0%	-	0	0.0%
Harwood Rise (on elbow)	10							-	0	0.0%	-	0	0.0%
Capill Corner (cul-de-sac)	11							-	0	0.0%	-	0	0.0%
Noreat Place	12							-	0	0.0%	-	0	0.0%
Blaise Court	1				<1	3	28.80%						
Hollingsworth Way (middle)	2				-	0	0.00%						
Cnr. Beasley Road & Hollingsworth Way	3				<1	2	3.33%						
Cnr. Beasley & Timbrell	4				-	0	0.00%						
Timbrell Way	5				-	0	0.00%						
Timbrell Way	6				-	0	0.00%						
Cnr. Timbrell & McGuinness	7				-	0	0.00%						
Cnr. McGuinness & Beasley	8				<1	2	1.67%						
Cnr. Beasley & Merrifield	9				<1	1	0.00%						
Cnr. Merrifield & Roe Hwy	10				-	0	0.00%						
Sellen Court	11				-	0	0.00%						
Cnr. Orrock & Sellen Court	12				-	0	0.00%						
Cnr. Merrifield & Roe Hwy	1	-	0	0.0%									
Merrifield (middle)	2	-	0	0.0%									
Cnr. Beasley & Merrifield	3	-	0	0.0%									
Beasley	4	-	0	0.0%									
Cnr. Beasley & Merrifield	5	-	0	0.0%									
Merrifield (middle)	6	-	0	0.0%									
Cnr. Merrifield & Roe Hwy	7	-	0	0.0%									
Merrifield (middle)	8	-	0	0.0%									
Stenton Corner	9	-	0	0.0%									
Bosworth Place	10	-	0	0.0%									
Cnr. Merrifield & Roe Hwy	1	-	0	0.0%									
Cnr. Beasley & Merrifield	2	-	0	0.0%									
Cnr. South Street & Darian Drive	3	-	0	0.0%									
Cnr. Darian Drive & Trident Terrace	4	-	0	0.0%									
Trident Terrace (middle)	5	-	0	0.0%									
Cnr. Trident Terrace & Plover Drive	6	-	0	0.0%									
Cnr. Arlington & Vahland	7	-	0	0.0%									
Arlington Drive Elbow	8	-	0	0.0%									
Cnr. Vahland & South Street	9	-	0	0.0%									

RRG CVC - Field Based Ambient Odour Intensity Assessments		Tuesday, 20 July 2021			Sunday, 15 August 2021			Monday, 20 September 2021			Friday, 29 October 2021		
		E, ESE Winds from 1500PM			E, ESE Winds from 0700AM			ESE - SSE Winds from 0700PM			ESE - SSE Winds from 0700AM		
Street Location	I.D.	ave.	max	≥2	ave.	max	≥2	ave.	max	≥2	ave.	max	≥2
Cnr. Dundee Street & Beasley Road	1	-	0	0.0%	-	0	0.0%	not assessed	not assessed	not assessed	not assessed	not assessed	not assessed
Beasley Road (middle)	2	-	0	0.0%	-	0	0.0%						
Cnr. Beasley Road & Hollingsworth Way	3	-	0	0.0%	-	0	0.0%						
Hollingsworth Way (middle)	4	-	0	0.0%	-	0	0.0%						
Cnr. Hollingsworth Way & Roe Hwy Footpath	5	-	0	0.0%	-	0	0.0%						
Roe Highway Footpath (middle)	6	-	0	0.0%	-	0	0.0%						
Cnr. Roe Hwy & Dundee Street	7	-	0	0.0%	-	0	0.0%						
Dundee Street (middle)	8	-	0	0.0%	-	0	0.0%						
Cluelow Rise (cul-de-sac)	9	-	0	0.0%	-	0	0.0%						
Harwood Rise (on elbow)	10	-	0	0.0%	-	0	0.0%						
Capill Corner (cul-de-sac)	11	-	0	0.0%	-	0	0.0%						
Noreat Place	12	-	0	0.0%	-	0	0.0%						
Blaise Court	1	not assessed	not assessed	not assessed	-	0	0.00%	-	0	0.00%			
Hollingsworth Way (middle)	2				-	0	0.00%	-	0	0.00%			
Cnr. Beasley Road & Hollingsworth Way	3				-	0	0.00%	-	0	0.00%			
Cnr. Beasley & Timbrell	4				-	0	0.00%	-	0	0.00%			
Timbrell Way	5				-	0	0.00%	-	0	0.00%			
Timbrell Way	6				-	0	0.00%	-	0	0.00%			
Cnr. Timbrell & McGuinness	7				-	0	0.00%	-	0	0.00%			
Cnr. McGuinness & Beasley	8				-	0	0.00%	-	0	0.00%			
Cnr. Beasley & Merrifield	9				-	0	0.00%	-	0	0.00%			
Cnr. Merrifield & Roe Hwy	10				-	0	0.00%	-	0	0.00%			
Sellen Court	11				-	0	0.00%	-	0	0.00%			
Cnr. Orrock & Sellen Court	12				-	0	0.00%	-	0	0.00%			
Cnr. Merrifield & Roe Hwy	1	not assessed	not assessed	not assessed	not assessed	not assessed	not assessed	not assessed	not assessed	not assessed	not assessed	not assessed	not assessed
Merrifield (middle)	2												
Cnr. Beasley & Merrifield	3												
Beasley	4												
Cnr. Beasley & Merrifield	5												
Merrifield (middle)	6												
Cnr. Merrifield & Roe Hwy	7												
Merrifield (middle)	8												
Stenton Corner	9												
Bosworth Place	10												
Cnr. Merrifield & Roe Hwy	1	not assessed	not assessed	not assessed	not assessed	not assessed	not assessed	not assessed	not assessed	not assessed	not assessed	not assessed	not assessed
Cnr. Beasley & Merrifield	2												
Cnr. South Street & Darian Drive	3												
Cnr. Darian Drive & Trident Terrace	4												
Trident Terrace (middle)	5												
Cnr. Trident Terrace & Plover Drive	6												
Cnr. Arlington & Vahland	7												
Arlington Drive Elbow	8												
Cnr. Vahland & South Street	9												

RRG CVC - Field Based Ambient Odour Intensity Assessments		Friday, 19 November 2021			Wednesday, 15 December 2021			Monday, 10 January 2022			Wednesday, 9 February 2022		
		SE-SSE - Moderate Winds from 0700AM			ESE - SSE Winds from 0700AM			E, ESE Winds from 0700AM			SE, SSE Winds from 0700AM		
Street Location	I.D.	ave.	max	≥2	ave.	max	≥2	ave.	max	≥2	ave.	max	≥2
Cnr. Dundee Street & Beasley Road	1	not assessed	not assessed	not assessed	-	0	0.0%	-	0	0.0%	not assessed	not assessed	not assessed
Beasley Road (middle)	2				-	0	0.0%						
Cnr. Beasley Road & Hollingsworth Way	3				-	0	0.0%						
Hollingsworth Way (middle)	4				-	0	0.0%						
Cnr. Hollingsworth Way & Roe Hwy Footpath	5				-	0	0.0%						
Roe Highway Footpath (middle)	6				-	0	0.0%						
Cnr. Roe Hwy & Dundee Street	7				-	0	0.0%						
Dundee Street (middle)	8				-	0	0.0%						
Cluelow Rise (cul-de-sac)	9				-	0	0.0%						
Harwood Rise (on elbow)	10				-	0	0.0%						
Capill Corner (cul-de-sac)	11				-	0	0.0%						
Noreat Place	12				-	0	0.0%						
Blaise Court	1	not assessed	not assessed	not assessed	-	0	0.0%	not assessed	not assessed	not assessed	not assessed	not assessed	not assessed
Hollingsworth Way (middle)	2				-	0	0.0%						
Cnr. Beasley Road & Hollingsworth Way	3				-	0	0.0%						
Cnr. Beasley & Timbrell	4				-	0	0.0%						
Timbrell Way	5				-	0	0.0%						
Timbrell Way	6				-	0	0.0%						
Cnr. Timbrell & McGuinness	7				-	0	0.0%						
Cnr. McGuinness & Beasley	8				-	0	0.0%						
Cnr. Beasley & Merrifield	9				-	0	0.0%						
Cnr. Merrifield & Roe Hwy	10				-	0	0.0%						
Sellen Court	11				-	0	0.0%						
Cnr. Orrock & Sellen Court	12				-	0	0.0%						
Cnr. Merrifield & Roe Hwy	1	-	0	0.00%	not assessed	not assessed	not assessed	-	0	0.00%	not assessed	not assessed	not assessed
Merrifield (middle)	2	-	0	0.00%				-	0	0.00%			
Cnr. Beasley & Merrifield	3	-	0	0.00%				-	0	0.00%			
Beasley	4	-	0	0.00%				-	0	0.00%			
Cnr. Beasley & Merrifield	5	-	0	0.00%				-	0	0.00%			
Merrifield (middle)	6	-	0	0.00%				-	0	0.00%			
Cnr. Merrifield & Roe Hwy	7	-	0	0.00%				-	0	0.00%			
Merrifield (middle)	8	-	0	0.00%				-	0	0.00%			
Stenton Corner	9	-	0	0.00%				-	0	0.00%			
Bosworth Place	10	-	0	0.00%				-	0	0.00%			
Cnr. Merrifield & Roe Hwy	1	not assessed	not assessed	not assessed	not assessed	not assessed	not assessed	not assessed	not assessed	not assessed	not assessed	not assessed	not assessed
Cnr. Beasley & Merrifield	2												
Cnr. South Street & Darian Drive	3												
Cnr. Darian Drive & Trident Terrace	4												
Trident Terrace (middle)	5												
Cnr. Trident Terrace & Plover Drive	6												
Cnr. Arlington & Vahland	7												
Arlington Drive Elbow	8												
Cnr. Vahland & South Street	9												



SMRC RRRC -
 OFA Compliance Survey Inspection
 RRRC_20210414-AA_2 - Calms, Gentle Breeze with Gusts ESE Winds



5 Summary & Comparison to Previous Annual Period

OFA's were undertaken on behalf of the RRG CVC during the period March 2021 through until February 2022 (inclusive) on a monthly basis. Over this period there were 12 individual survey days. On each survey day at least 1 of the 4 designated assessment areas were surveyed. A breakdown of time spent in each of the 4 surveyed assessment areas is shown below:

- Assessment Area 1 (E to ESE) – 5 out of 13 @ 38.46% of the survey period
- Assessment Area 2 (ESE to SE) – 2 out of 13 @ 15.38% of the survey period
- Assessment Area 3 (SE to SSE) – 5 out of 13 @ 38.46% of the survey period
- Assessment Area 4 (SSE to S) – 1 out of 13 @ 7.70% of the survey period

Over the 12-month assessment period assessors detected CVC odours during only 1 measurement day of the 12 measurement days conducted, which was within Assessment Area 2 under E and SE wind conditions, and:

- During this measurement day the maximum Intensity Rank noted by the panelists was 3-Distinct, observed in April 2021; and
- During the April 2021 survey there was one (1) single location exceedance of the odour criterion where observations of odour intensity and frequency \geq an intensity of 2 for 20% of the measurement cycle time was observed. This occurred at single location "Blaise Court".

The remaining measurement days all recorded no observations of CVC odours within the Assessment Areas.

During the last Annual Report Period of March 2020 to February 2021, panelists detected odours in only 1 of the 12 monthly surveys undertaken which was within the month of October 2020.

Comparing this to the current Annual Compliance period, the current observable CVC odours have not increased from the previous annual compliance period.

The performance of all Biofilters over the Current Compliance period was unable to be determined given the lack of WCF odours being delivered to the biofilters, specifically Biofilter 1 and 2.

However, operational Biofilters 3 and 4 continue to perform well under the current operational conditions with exception to measured odour concentrations from Fan Areas 111 and 112 during July 2021. These exceedances however did not translate into offsite odour impacts, nor offsite odour complaints and these Fan Areas were remeasured after maintenance from the WCF and subsequently returned compliant results.

In summary, the current Annual Compliance Period OFA results show that there were negligible-to-nil offsite odour impacts from the CVC during the assessment period March 2021 to February 2022, where:

- The RRG CVC was compliant with **Licence Condition 17(a)**, "The Licence Holder must implement the Field Odour Assessment Plan dated 30 May 2020"; and



- The RRG CVC was compliant with **Licence Condition 19**, “The Licence Holder must ensure that odour emitted from the premises does not unreasonably interfere with the health, welfare, convenience, comfort or amenity of any person who is not on the premises”.