



Application for Works Approval

Part V Division 3 of the *Environmental Protection Act 1986*

Works Approval Number W6818/2023/1

Applicant Terra Mining Pty Ltd

ACN 605 732 518

File number DER2023/000264

Premises Extension Hill Mine Site

Mining Tenements: G59/34, G59/62, M59/338 and M59/339

PAYNES FIND WA 6612

As defined by the premises maps attached to the issued works approval

Date of report 05 December 2023

Decision Works approval granted

A/MANAGER, RESOURCE INDUSTRIES

an officer delegated under section 20 of the *Environmental Protection Act 1986* (WA)

Table of Contents

1. Decision summary	1
2. Scope of assessment	1
2.1 Regulatory framework	1
2.2 Application summary and overview of premises	1
2.3 Part IV of the EP Act.....	3
3. Risk assessment.....	4
3.1 Source-pathways and receptors	4
3.1.1 Emissions and controls	4
3.1.2 Receptors.....	7
3.2 Risk ratings.....	10
4. Consultation	13
5. Conclusion	14
References.....	14
Appendix 1: Summary of applicant's comments on risk assessment and draft conditions	15
Appendix 2: Application validation summary.....	16
 Table 1: List of equipment.....	 2
Table 2: Proposed applicant controls	4
Table 3: Sensitive human and environmental receptors and distance from prescribed activity.	7
Table 4: Risk assessment of potential emissions and discharges from the premises during construction, commissioning and operation.....	11
Table 5: Consultation	13
 Figure 1: Crushing and Screening Circuit.....	 2
Figure 2: Distance to sensitive receptors.....	9

1. Decision summary

This decision report documents the assessment of potential risks to the environment and public health from emissions and discharges during the construction and operation of the premises. As a result of this assessment, works approval W6818/2023/1 has been granted.

2. Scope of assessment

2.1 Regulatory framework

In completing the assessment documented in this decision report, the Department of Water and Environmental Regulation (the department; DWER) has considered and given due regard to its regulatory framework and relevant policy documents which are available at <https://dwer.wa.gov.au/regulatory-documents>.

2.2 Application summary and overview of premises

On 11 April 2023, the applicant submitted an application for a works approval to the department under section 54 of the *Environmental Protection Act 1986* (EP Act).

The application is to undertake construction works relating to a mobile Crushing and Screening Plant at the premises. The premises is approximately 71 km north east of Latham.

The premises relates to the category and assessed production / design capacity under Schedule 1 of the *Environmental Protection Regulations 1987* (EP Regulations) which are defined in works approval W6818/2023/1. The infrastructure and equipment relating to the premises category and any associated activities which the department has considered in line with *Guideline: Risk Assessments* (DWER 2020) are outlined in works approval W6818/2023/1.

Extension Hill Mine Site is currently licensed under licence L8495/2010/2 to Mount Gibson Mining Ltd. The mining operations ceased in early 2020 and the mine site is currently in Care in Maintenance.

The applicant for this works approval application is Terra Mining Pty Ltd who is planning to recommence mining at the site by using a new Crushing and Screening Plant onsite. It should be noted that licence L8495/2010/2 was transferred from Mount Gibson Mining Ltd across to Terra Mining Pty Ltd on the 04 December 2023 prior to the issuing of this works approval.

The following key infrastructure will be constructed / installed (it should be noted that the Crushing and Screening Plant will be located on G59/34 as per DMIRS approvals):

- Crushing and Screening Plant; and
- Ore Stacking Plant.

The following mining equipment will be used:

- Two 130 tonne class excavators;
- Six 100 tonne class dump trucks;
- One D9 or equivalent dozer;
- One 14M or equivalent grader;
- One 20,000L water truck;
- Run-of-Mine (ROM) loader;
- Service vehicle; and
- Light vehicles.

Refer to Figure 1 for the Crushing and Screening Circuit.

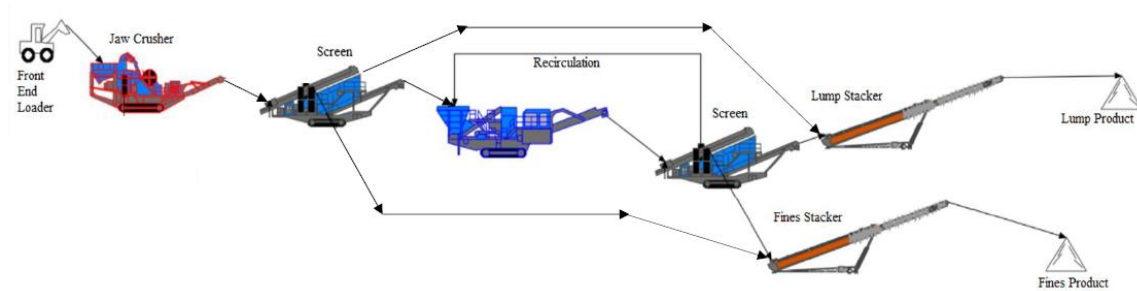


Figure 1: Crushing and Screening Circuit

A Front End Loader on the Run-Of-Mine loads material into a built-in hopper, which incorporates a variable speed grizzly feeder to the Jaw Crusher. Large sized ore that does not fit through the Screen passes into the Jaw Crusher chamber, all other material passes through the Screen and falls through the grizzly onto the common conveyor belt below the Jaw Crusher.

This primary crushed ore passes over to the Secondary Crusher for further sizing. Oversize material is recirculated back to the Secondary Crusher for further crushing. Screened material feeds onto a vibrating sizing Screen onto the discharge conveyor and conveyed to the product stacker conveyor for stockpiling final product.

Table 1 shows the list of equipment required for the project.

Table 1: List of equipment

Item	Description	Make and Model	Quantity
Major Plant			
1	Crusher feeder loader	Komatsu WA600 or equivalent	One (1)
2	Back up loader	Komatsu WA500 or equivalent	One (1)
3	Jaw crusher	McCloskey J50	One (1)
4	Vibrating screen	Terex 984	One (1)
5	Cone crusher	McCloskey C44	One (1)
6	Recirculate conveyor	Striker ST1510	One (1)
7	Product conveyor incl. weightometer	Striker ST1810	One (1)
8	Radial stacker conveyor	Striker ST3010	One (1)
Ancillary Plant			
9	Franna crane	Terex- MAC 25-4	One (1)
10	Service truck Mack (Small)	Mack 6X4	One (1)
11	Water truck (Small)	Mack 6X4	One (1)

Item	Description	Make and Model	Quantity
12	Elevated work platform	JLG - 450AJ	One (1)
13	Integrated tool carrier	Caterpillar CAT930M	One (1)
14	Skid steer	Toyota K8	One (1)
15	Light vehicle	Toyota Prado	One (1)
16	Light vehicle	Toyota Hilux Dual Cab Ute	One (1)
17	Light vehicle	Toyota 3T Fitter Truck	One (1)
18	Lighting towers Four (4) Head	TBC	Five (2)
19	Genset 22KVA	TBC	One (1)
20	Welder mobile 500A	TBC	One (1)
Non-Process Infrastructure			
21	Office – twelve (12)m x three (3)m	TBC	One (1)
22	Crib - twelve (12)m x three (3)m	TBC	One (1)
23	Ablution - six (6)m x three (3)m	TBC	One (1)
24	Six (6)m x six (6)m dome workshop including containers	TBC	One (1)
25	Raw Water Tank and Pump	TBC	One (1)
26	Self-bunded Hydrocarbon Storage	TBC	One (1)

2.3 Part IV of the EP Act

Extension Hill Mine Site has a corresponding Ministerial Statement (MS) 753, approved on 24 October 2007. Related ongoing management plans include: Research and Recovery Plans for *Darwinia masonii*, and *Lepidosperma sp.*; Significant Flora Species and Communities Management Plan; Weed Management Plan; Bush Fire Management Plan; Mine Site Fauna Management Plan; Malleefowl Conservation Plan; Preliminary and Final Closure Plans.

MS 889 was issued on 28 February 2012 to amend MS 753 conditions relating to a performance bond and fauna management along the services corridor.

On 08 December 2016, MS 1045 was issued and approved Mount Gibson Mining Ltd to construct two mine pits, a waste rock landform and support infrastructure at the Iron Hill and Iron Hill South Deposits. Ore mined at the Iron Hill deposits will be processed at the Extension Hill Mine Site premises. Condition 6-1 requires the proponent to submit a Flora and Vegetation Outcome-based Condition Environmental Management Plan, with monitoring, trigger criteria and threshold contingency actions. Condition 6-4 requires implementation of this Plan.

3. Risk assessment

The department assesses the risks of emissions from prescribed premises and identifies the potential source, pathway and impact to receptors in accordance with the *Guideline: Risk Assessments* (DWER 2020).

To establish a risk event there must be an emission, a receptor which may be exposed to that emission through an identified actual or likely pathway, and a potential adverse effect to the receptor from exposure to that emission.

3.1 Source-pathways and receptors

3.1.1 Emissions and controls

The key emissions and associated actual or likely pathway during premises construction and operation which have been considered in this decision report are detailed in Table 2 below. Table 2 also details the control measures the applicant has proposed to assist in controlling these emissions, where necessary.

Table 2: Proposed applicant controls

Emission	Sources	Potential pathways	Proposed controls
Construction			
Dust	Vehicle movements, mobilisation and placement of crushing and screening plant. Stockpiling of topsoil.	Air / windborne pathway	The Crushing and Screening Plant is to be installed, rather than constructed, so construction dust emissions are expected to be minimal, in an already disturbed area and for a minimal duration. Water cart will be used for dust suppression.
Noise		Air / windborne pathway	The Crushing and Screening Plant is to be installed, rather than constructed, so construction noise emissions are expected to be minimal, in already disturbed area and for a minimal duration.
Operation			
Dust	Crushing and Screening, Stacking operations Ore Plant	Air / windborne pathway	General dust controls: <ul style="list-style-type: none"> A watercart is used to precondition the ROM materials at ROM pad and to control the dust around crushing pad. Using water sprays (where appropriate).Crushing plant is reticulated with dust suppression piping for each transfer points for dust / mist sprays where appropriate; Using covered and skirted conveyors at ore transfer points; Sealing of relevant joints and installation of a dust collection system; Ensuring correct equipment design, operational procedures and adequate

Emission	Sources	Potential pathways	Proposed controls
			<p>operator training occurs;</p> <ul style="list-style-type: none"> • Containment apparatus on conveyor transfer points; • Belt scrapers on the conveyor belt; • Collection trays under the belt plough on the return belt; • Dust suppression sprinklers at transfer points and stockpiles; • Deluge sprays at the ROM area and the hopper; and • If any infrastructure is required to be moved from its original position once the Project is operational, then dust control equipment will be reinstalled and operated according to the original plant specifications. <p>Dust controls will be located on the plant at the following locations:</p> <ul style="list-style-type: none"> • ROM hopper; • Transfer point between jaw crusher and Screen No1; • Transfer point between Screen No1 to Cone Crusher; • Transfer point between the cone crusher and screen; • Transfer point between recirculation and cone crusher; • Transfer point between the screen and fines stacker; • Transfer point between the screen and lump stacker; • Product transfer point from the fines stacker to the cone; and • Product transfer point from the lump stacker to cone.
Noise	Crushing and Screening, Stacking operations Ore Plant	Air windborne pathway /	<ul style="list-style-type: none"> • Conduct regular and effective maintenance of plant and equipment to maintain noise levels; • Vibration from machinery with rotating parts are reduced by attention to proper balancing; and • Frictional noise in machines, conveyor rollers and trolleys are reduced by proper lubrication.
Sediment	Rainfall ingress to	Direct	<ul style="list-style-type: none"> • Pre-existing haul roads and access tracks

Emission	Sources	Potential pathways	Proposed controls
laden stormwater	processing areas	discharges	<p>will be used to minimise interference to natural drainage;</p> <ul style="list-style-type: none"> During high rainfall events the effect of stormwater discharge from the site will be controlled. Adequate drainage will be assured through site structures, stockpiles and roadways. This will negate the possibility of project enhanced flooding, erosion and sedimentation; In terms of physical water flow, the project will be implemented to have little impact on surface water runoff in the region, however if proven necessary, a sediment trap system will be incorporated into the site design; The support infrastructure will be designed to ensure the safe storage and handling of all hazardous and waste materials to prevent contamination to the project area; Appropriate design standards will be applied to allow for the provision of scour protection measures; Drainage areas will be suitably designed to minimise contamination of surface water; Cleared vegetation and topsoil will be stockpiled away from watercourses and in discrete stockpiles to avoid any interference to surface flows; Contaminated water from work areas will be kept separate from clean storm water; and Water interfacing with work areas will be directed to oil water separators that are designed with a TPH discharge level of <10 ppm.
Hydrocarbons / chemicals	Lubricants, waste oil, refuelling, vehicle maintenance	Direct discharges	<ul style="list-style-type: none"> Lubricants and waste oil will be contained within portable bunding; All refuelling and vehicle maintenance will occur within a bunded area sufficiently large enough to prevent uncontrolled releases into drainage lines; Spill kits will be placed at the refuelling area and in-service vehicles and staff will be trained in the proper use of the kits; The fuel tank (double skinned) will be protected against collision by equipment and/or vehicles by the placement of appropriate barriers or bollards; Areas adjacent to secondary storage

Emission	Sources	Potential pathways	Proposed controls
			<p>facilities will be contoured to drain away from the facilities to prevent impact and flooding;</p> <ul style="list-style-type: none"> Water or other liquids that collect in the storage facilities will be removed and treated; All hazardous materials will be stored as directed on the Safety Data Sheet (SDS); and A copy of the SDS will be kept in close proximity to the storage tank and on file, on site.

3.1.2 Receptors

In accordance with the *Guideline: Risk Assessment* (DWER 2020), the Delegated Officer has excluded the applicant's employees, visitors, and contractors from its assessment. Protection of these parties often involves different exposure risks and prevention strategies, and is provided for under other state legislation.

Table 3 and Figure 2 below provides a summary of potential human and environmental receptors that may be impacted as a result of activities upon or emission and discharges from the prescribed premises (*Guideline: Environmental Siting* (DWER 2020)).

Table 3: Sensitive human and environmental receptors and distance from prescribed activity

Human receptors	Distance from prescribed activity
Aboriginal Sites and Heritage: Mt Gibson Rockhole (Place ID: 24389)	Within the prescribed premises boundary, 400m north of the northern landfill pit
Aboriginal Sites and Heritage: Extension Hill Rock Hole and Artefact Scatter	Within the prescribed premises boundary, 1km north of the northern landfill pit
Aboriginal Sites and Heritage: Extension Hill (Place ID: 25293)	Within the prescribed premises boundary, 1.4km east of the northern landfill pit
Aboriginal Sites and Heritage: Mt Gibson Rockshelter Complex (Place ID: 22709)	Within the prescribed premises boundary, 2km north-east of the northern landfill pit
Environmental receptors	Distance from prescribed activity
Watercourse: Non-perennial (ID: 859830)	Within the prescribed premises boundary, 2.7km south-east of the northern landfill pit and 3km east of the southern landfill pit
Groundwater	Aquifers encountered were in banded iron formation, at depths commencing at 48 - 78 m below ground level and extending to depths in the

	<p>range 85-135 m.</p> <p>Groundwater is brackish to saline, with total dissolved solids (TDS) of 1,600 - 11,000 mg/L. pH ranged from 7.1 - 8.5 (neutral to alkaline). The groundwater is of a sodium chloride type with moderately high concentrations of sulphate.</p> <p>TDS, chloride and nitrate values exceeding applicable guidelines were variously reported, indicating groundwater may be unsuitable for pastoral use.</p>
Threatened Ecological Communities (TEC): Mount Gibson Range vegetation complexes (banded ironstone formation) (priority 1)	Within the prescribed premises boundary, 200m east of the northern landfill pit and 2.1km north-east of the southern landfill pit.
TEC: Eucalypt woodlands of the Western Australian Wheatbelt (priority 3)	Within the prescribed premises boundary, 2.1km east of the northern landfill pit and 500m east of the southern landfill pit.
<p>Threatened fauna:</p> <p><i>Leipoa ocellata</i> (Malleefowl)</p> <p><i>Egernia stokesii badia</i> (Western spiny-tailed skink)</p> <p><i>Falco peregrinus</i> (Peregrine falcon)</p> <p><i>Idiosoma kopejtkorum</i> (Lake Goorly shield-backed trapdoor spider)</p>	<p>Within the premises boundary.</p> <p>These species will be managed in accordance with MS 753 and EPBC 2005/2381.</p>
<p>Threatened flora:</p> <p><i>Darwinia masonii</i></p> <p><i>Lepidosperma gibsonii</i></p>	<p>On the Banded Iron formations (<1,000m).</p> <p>These species will be managed in accordance with MS 753 and EPBC 2005/2381.</p>

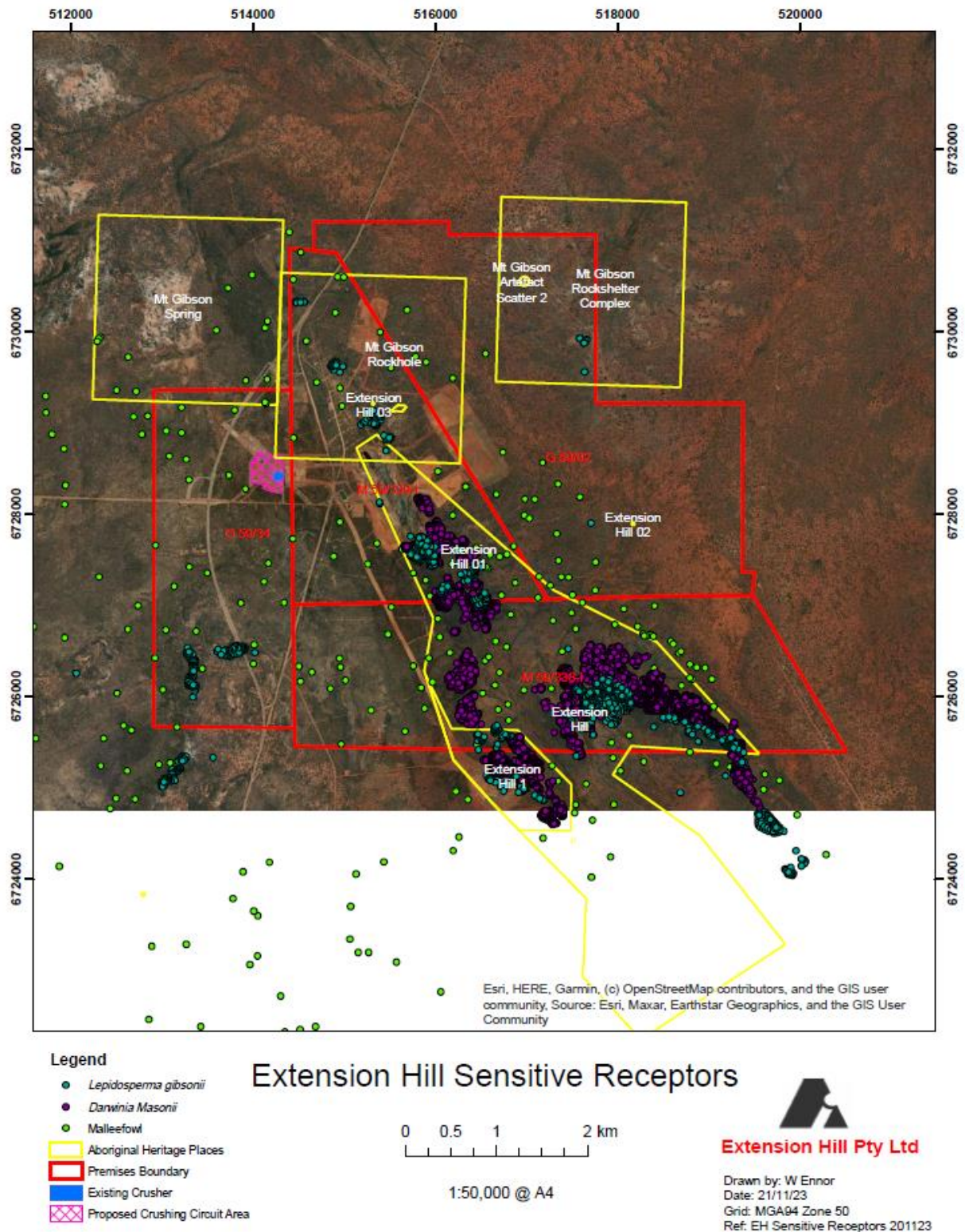


Figure 2: Distance to sensitive receptors

3.2 Risk ratings

Risk ratings have been assessed in accordance with the *Guideline: Risk Assessments* (DWER 2020) for each identified emission source and takes into account potential source-pathway and receptor linkages as identified in Section 3.1. Where linkages are in-complete they have not been considered further in the risk assessment.

Where the applicant has proposed mitigation measures/controls (as detailed in Section 3.1), these have been considered when determining the final risk rating. Where the delegated officer considers the applicant's proposed controls to be critical to maintaining an acceptable level of risk, these will be incorporated into the works approval as regulatory controls.

Additional regulatory controls may be imposed where the applicant's controls are not deemed sufficient. Where this is the case the need for additional controls will be documented and justified in Table 4.

Works approval W6818/2023/1 that accompanies this decision report authorises construction and time-limited operations. The conditions in the issued works approval, as outlined in Table 4 have been determined in accordance with *Guidance Statement: Setting Conditions* (DER 2015).

A licence is required following the time-limited operational phase authorised under the works approval to authorise emissions associated with the ongoing operation of the premises i.e. Category 5 activities. A risk assessment for the operational phase has been included in this decision report, however licence conditions will not be finalised until the department assesses the licence application.

Table 4: Risk assessment of potential emissions and discharges from the premises during construction, commissioning and operation

Risk events					Risk rating ¹ C = consequence L = likelihood	Applicant controls sufficient?	Conditions ² of works approval	Justification for additional regulatory controls
Sources / activities	Potential emission	Potential pathways and impact	Receptors	Applicant controls				
Construction								
Vehicle movements, mobilization and placement of crushing and screening plant Stockpiling of topsoil	Dust	Air / windborne pathway causing impacts to health and amenity	Heritage Sites (within premises boundary)	Refer to Section 3.1	C = Slight L = Possible Low Risk	Y	N/A	N/A
	Noise		TEC – Flora (700m) Fauna (within premises boundary)	Refer to Section 3.1	C = Slight L = Possible Low Risk	Y	N/A	N/A
Operation (including time-limited-operations operations)								
Crushing and screening, stockpiling of ore, vehicle movement and loading Vehicle movements	Dust	Air/windborne pathway causing impacts to health and amenity	Heritage Sites (within premises boundary) TEC – Flora (700m) Fauna (within premises boundary)	Refer to Section 3.1	C = Minor L = Possible Medium Risk	Y	Condition 1, Table 1 Design and construction / installation requirements Requires dust controls to be implemented Condition 6, Table 2 Infrastructure and equipment requirements during time limited operations Requires the use and maintenance of the dust controls	N/A
	Noise	Air/windborne pathway causing impacts to health and amenity	Heritage Sites (within premises boundary) TEC – Flora (700m) Fauna (within	Refer to Section 3.1	C = Slight L = Possible Low Risk	Y	N/A	N/A

Works approval: W6818/2023/1

Risk events					Risk rating ¹ C = consequence L = likelihood	Applicant controls sufficient?	Conditions ² of works approval	Justification for additional regulatory controls
Sources / activities	Potential emission	Potential pathways and impact	Receptors	Applicant controls				
			premises boundary)					
	Sediment laden stormwater	Overland runoff potentially causing ecosystem disturbance/ impacting surface water quality	Heritage Sites (within premises boundary) TEC – Flora (700m) Fauna (within premises boundary)	Refer to Section 3.1	C = Slight L = Possible Low Risk	Y	Condition 1, Table 1 Design and construction / installation requirements Requires control of stormwater drainage, segregating clean stormwater and contaminated water and the use of oily water separators Condition 6, Table 2 Infrastructure and equipment requirements during time limited operations Requires the use and maintenance of stormwater controls	N/A
Hydrocarbon spills from refueling, faulty vehicles and equipment	Hydrocarbon Contamination	Seepage to surface and groundwater below, impacts to flora and fauna, and contaminate soils	Heritage Sites (within premises boundary) TEC – Flora (700m) Fauna (within premises boundary)	Refer to Section 3.1	C = Slight L = Unlikely Low Risk	Y	Condition 1, Table 1 Design and construction / installation requirements Requires hydrocarbon / chemical design requirements Condition 6, Table 2 Infrastructure and equipment requirements during time limited operations Requires hydrocarbons / chemicals containment, appropriate transfer points, spill kits, drainage requirements and maintenance	N/A

Note 1: Consequence ratings, likelihood ratings and risk descriptions are detailed in the *Guideline: Risk Assessments* (DWER 2020).

Note 2: Proposed applicant controls are depicted by standard text. **Bold and underline text** depicts additional regulatory controls imposed by department.

4. Consultation

Table 5 provides a summary of the consultation undertaken by the department.

Table 5: Consultation

Consultation method	Comments received	Department response
Application advertised on the department's website on 31/07/2023	None received	N/A
Local Government Authority advised of proposal on 26/07/2023	None received	N/A
Department of Mines, Industry Regulation and Safety (DMIRS) advised of proposal 26/07/2023	General comments received	Noted
Department of Biodiversity, Conservation and Attractions (DBCA) advised of proposal on 26/07/2023	None received	N/A
Department of Planning, Lands and Heritage (DPLH) advised of proposal on 26/07/2023	DPLH replied on 28/08/2023 stating / advising that the project does not intersect with any known Aboriginal Cultural Heritage and DPLH has no further comments to provide on the project	Noted
Badimia Bandi Barna Aboriginal Corporation advised of proposal on 26/07/2023	None received	N/A
Ninghan Pastoral Station advised of proposal on 26/07/2023	Ninghan Pastoral Station (Pindiddy Aboriginal Corporation) replied on 24/08/2023 with concerns on availability of water supply for cattle	Noted and referred to Water Services.
Bush Heritage Australia advised of proposal on 26/07/2023	Bush Heritage Australia replied on 09/08/2023 requesting to confirm if the material will be trucked to Perenjori and then railed to Geraldton. They also requested a map of the proposed route in order that they can ascertain what impact that might have on leasehold interests in the area.	DWER provided the requested information to the stakeholder on 28/08/2023.
Australian Wildlife Conservancy advised	None received	N/A

Consultation method	Comments received	Department response
of proposal on 26/07/2023		
Mount Gibson Mining Ltd advised of proposal on 23/08/2023	Emailed requesting 14 days extension on 21/09/2023. Emailed on 04/10/2023 with no substantial objections.	DWER endorsed. Noted.
Applicant was provided with draft documents on 16/11/2023	Applicant replied on 17/11/2023. Refer to Appendix 1.	Applicant replied on 17/11/2023. Refer to Appendix 1.

5. Conclusion

Based on the assessment in this decision report, the delegated officer has determined that a works approval will be granted, subject to conditions commensurate with the determined controls and necessary for administration and reporting requirements.

References

1. Department of Environment Regulation (DER) 2015, *Guidance Statement: Setting Conditions*, Perth, Western Australia.
2. Department of Water and Environmental Regulation (DWER) 2020, *Guideline: Environmental Siting*, Perth, Western Australia.
3. DWER 2020, *Guideline: Risk Assessments*, Perth, Western Australia.
4. Asia Iron Australia Pty Ltd, Terra Mining Pty Ltd Works Approval Application 11/04/2023, West Perth, Western Australia.
5. Asia Iron Australia Pty Ltd, RE: Terra Mining Pty Ltd Works Approval Application Reference DER2022/000300 26/06/2023, West Perth, Western Australia.
6. Asia Iron Australia Pty Ltd, RE: Terra Mining Pty Ltd Works Approval Application Reference DER2022/000300 24/07/2023, West Perth, Western Australia.
7. Asia Iron Australia Pty Ltd, RE: W6818 Extension Hill Maps 05/09/2023, West Perth, Western Australia.
8. Asia Iron Australia Pty Ltd, RE: W6818 Extension Hill 27/09/2023, West Perth, Western Australia.
9. Asia Iron Australia Pty Ltd, RE: W6818 Extension Hill 27/09/2023, West Perth, Western Australia.
10. Asia Iron Australia Pty Ltd, RE: W6818 Extension Hill 27/09/2023, West Perth, Western Australia.
11. Asia Iron Australia Pty Ltd, RE: NOTIFICATION: APPLICATION FOR A WORKS APPROVAL W6818/2023/1 - INTENTION TO GRANT; DRAFT INSTRUMENT AND DECISION REPORT 17/11/2023, West Perth, Western Australia.
12. Asia Iron Australia Pty Ltd, RE: NOTIFICATION: APPLICATION FOR A WORKS APPROVAL W6818/2023/1 - INTENTION TO GRANT; DRAFT INSTRUMENT AND DECISION REPORT 21/11/2023, West Perth, Western Australia.

Appendix 1: Summary of applicant's comments on risk assessment and draft conditions

Condition	Summary of applicant's comment	Department's response
Front page	G59/30 is to be replaced by G59/62. Attached a new premises boundary map top cover this.	Updated as requested.
1, Table 1	Removed some aspects as they relate to fixed crusher Removed second point as it relates to fixed crusher Relates to fixed crusher Will have sprays not sprinklers in place There will be a deluge spray on the hopper and a water cart will wet down the ROM Removed the point around sealing of relevant joints etc as it relates to fixed crusher Change to wording to suit the mobile crushing process Removed product transfer point as it relates to fixed crusher	Updated as requested.

Appendix 2: Application validation summary

SECTION 1: APPLICATION SUMMARY		
Application type		
Works approval	<input checked="" type="checkbox"/>	NEW APPLICATION
Date application received	11 April 2023	
Applicant and Premises details		
Applicant name/s (full legal name/s)	Terra Mining Pty Ltd	
Premises name	N/A ("Extension Hill Mine Site")	
Premises location	PAYNES FIND WA 6612 <u>Mining tenements:</u> G59/30 (exp. 18/04/2026) G59/33 (exp. 23/03/2027) G59/34 (exp. 23/03/2027) L59/68 (exp. 08/06/2027) L59/69 (exp. 08/06/2027) L59/87 (exp. 04/11/2030) M59/338 (exp. 31/08/2026) M59/339 (exp. 31/08/2026)	
Local Government Authority	Shire of Yalgoo	
Application documents		
HPCM file reference number:	DER2018/001042-9~16	
Key application documents (additional to application form):	Attachment 1: Company Extract Attachment 2: EHPL Letter of consent for Terra Mining Attachment 3: Premises Boundary Attachment 4: Supporting Information	
Scope of application/assessment		
Summary of proposed activities or changes to existing operations.	New Works approval Construction and operation of a mobile crushing and screening plant on mining tenure held by Extension Hill Pty Ltd (EHPL).	
Category number/s (activities that cause the premises to become prescribed premises)		
Table 1: Prescribed premises categories		
Prescribed premises category and description	Proposed production or design capacity	Proposed changes to the production or design capacity (amendments only)
Category 5: Processing or beneficiation of metallic or non-metallic ore	1.4-2.9 mtpa	N/A
Legislative context and other approvals		

Has the applicant referred, or do they intend to refer, their proposal to the EPA under Part IV of the EP Act as a significant proposal?	Yes <input checked="" type="checkbox"/> No <input type="checkbox"/>	Referral decision No: N/A Managed under Part V <input type="checkbox"/> Assessed under Part IV <input type="checkbox"/>
Does the applicant hold any existing Part IV Ministerial Statements relevant to the application?	Yes <input checked="" type="checkbox"/> No <input type="checkbox"/>	Ministerial statement No: MS 753 EPA Report No: N/A
Has the proposal been referred and/or assessed under the EPBC Act?	Yes <input checked="" type="checkbox"/> No <input type="checkbox"/>	Reference No: EPBC 2005/2381 Threatened species and communities
Has the applicant demonstrated occupancy (proof of occupier status)?	Yes <input checked="" type="checkbox"/> No <input type="checkbox"/>	Certificate of title <input type="checkbox"/> General lease <input type="checkbox"/> Expiry: Mining lease / tenement <input type="checkbox"/> Expiry: Other evidence <input checked="" type="checkbox"/> Expiry: Attachment 2: EHPL Letter of consent for Terra Mining
Has the applicant obtained all relevant planning approvals?	Yes <input type="checkbox"/> No <input type="checkbox"/> N/A <input checked="" type="checkbox"/>	Approval: Expiry date: If N/A explain why?
Has the applicant applied for, or have an existing EP Act clearing permit in relation to this proposal?	Yes <input type="checkbox"/> No <input checked="" type="checkbox"/>	CPS No: N/A No clearing is proposed.
Has the applicant applied for, or have an existing CAWS Act clearing licence in relation to this proposal?	Yes <input type="checkbox"/> No <input checked="" type="checkbox"/>	Application reference No: N/A Licence/permit No: N/A No clearing is proposed.
Has the applicant applied for, or have an existing RIWI Act licence or permit in relation to this proposal?	Yes <input type="checkbox"/> No <input checked="" type="checkbox"/>	Application reference No: Licence/permit No: GWL 166067(6) and GWL156426(6)
Does the proposal involve a discharge of waste into a designated area (as defined in section 57 of the EP Act)?	Yes <input type="checkbox"/> No <input type="checkbox"/>	Name: N/A Type: Proclaimed Groundwater Area/Surface Water Area Has Regulatory Services (Water) been consulted? Yes <input type="checkbox"/> No <input type="checkbox"/> N/A <input type="checkbox"/> TBC pending RFI
Is the Premises situated in a Public Drinking Water Source Area (PDWSA)?	Yes <input type="checkbox"/> No <input checked="" type="checkbox"/>	Name: N/A Priority: N/A

Is the Premises subject to any other Acts or subsidiary regulations (e.g. <i>Dangerous Goods Safety Act 2004</i> , <i>Environmental Protection (Controlled Waste) Regulations 2004</i> , <i>State Agreement Act xxxx</i>)	Yes <input checked="" type="checkbox"/> No <input type="checkbox"/>	<i>EPBC Act 1999</i> <i>Mining Act 1978</i> <i>EP Act 1986</i> <i>BC Act 2016</i> <i>Aboriginal Heritage Act 1972</i> <i>Aboriginal Cultural Heritage Act 2021</i> <i>Native Title Act 1993</i> <i>RIWI Act 1914</i>
Is the Premises within an Environmental Protection Policy (EPP) Area?	Yes <input type="checkbox"/> No <input checked="" type="checkbox"/>	N/A
Is the Premises subject to any EPP requirements?	Yes <input type="checkbox"/> No <input checked="" type="checkbox"/>	N/A
Is the Premises a known or suspected contaminated site under the <i>Contaminated Sites Act 2003</i> ?	Yes <input type="checkbox"/> No <input checked="" type="checkbox"/>	Classification: N/A Date of classification: N/A