



## Application for Works Approval Amendment

### Part V Division 3 of the *Environmental Protection Act 1986*

---

<b>Works Approval Number</b>	W6780/2023/1
<b>Works Approval Holder</b>	Atlas Iron Pty Ltd
<b>ACN</b>	110 396 168
<b>File Number</b>	APP-0026610
<b>Premises</b>	McPhee Creek Project  Mining tenements M45/1243-I, L46/158, L45/598 NULLAGINE WA 6758  As defined in Schedule 1 of the Revised Works Approval
<b>Date of Report</b>	10 April 2025 <b>(FINAL)</b>
<b>Decision</b>	Revised works approval granted

## Table of Contents

<b>1. Decision summary .....</b>	<b>3</b>
<b>2. Scope of assessment .....</b>	<b>3</b>
2.1 Regulatory framework .....	3
2.2 Amendment summary .....	3
<b>3. Consultation .....</b>	<b>8</b>
<b>4. Conclusion .....</b>	<b>8</b>
4.1 Summary of amendments.....	8
<b>References .....</b>	<b>8</b>

## 1. Decision summary

The Delegated Officer has determined to make amendments to W6780/2023/1. The amendments are administrative in nature therefore they do not alter the risk profile of the Premises, providing that activities, emissions and receptors as stated in existing approvals remain unchanged.

This Amendment Report documents the amendments made pursuant to section 59 and 59(B) of the *Environmental Protection Act 1986* (EP Act).

The decision report for the existing works approval will remain on the department's website for future reference and will act as a record of the department's decision making.

## 2. Scope of assessment

### 2.1 Regulatory framework

In amending the works approval, the department has considered and given due regard to its Regulatory Framework and relevant policy documents which are available at <https://dwer.wa.gov.au/regulatory-documents>.

### 2.2 Amendment summary

Works Approval W6780/2023/1 is held by Atlas Iron Pty Ltd (Works Approval Holder) for the McPhee Creek Project (the Premises), located at Mining tenements M45/1243-I, L46/158, L45/598.

The Premises relates to the categories and the assessed design capacity under Schedule 1 of the *Environmental Protection Regulations 1987* (EP Regulations) which are defined in existing Works Approval W6780/2023/1.

On 03 December 2024, the Works Approval Holder submitted an application to the department to amend Works Approval W6780/2023/1 under section 59B of the *Environmental Protection Act 1986* (EP Act).

Indigenous heritage surveys identified some culturally sensitive areas that intersected planned infrastructure. The Works Approval holder has submitted an amendment for a subsequent updated design, which seeks to avoid impacts to these Indigenous heritage values where possible.

The amendment is limited only to changing the placement of the following infrastructure within the Premises:

- Ore Handling Plant
- Crushing and screening plants
- Wastewater Treatment Plants (WWTP) and sprayfields
- Septic tanks
- Temporary used tyre storage facility
- Ammonium Nitrate storage facility
- Magazine
- Fuel storage facilities
- Inclusion of locations for a Class II landfill and tyre disposal facility
- Bioremediation land farm, turkey's nest and other activities

Table 1 compares the old infrastructure location against that of the new location. Figures 1 and 2 show the distances to sensitive receptors from the new infrastructure location.

**Table 1: Comparative distances to the nearest sensitive receptor for the original placement of infrastructure to the new location**

Infrastructure	Closest Sensitive Receptor (New Infrastructure Location)			Closest Sensitive Receptor (Old Infrastructure Location)			Comments
	Distance (m)	Type	ID	Distance (m)	Type	ID	
Bioremediation Site	141	Pool	Lionel Creek	207	Watercourse	Lionel Creek	
Class II Landfill 1	175	Significant Flora	P4	222	Significant Flora	P4	
Crushing and Screening Location 4	500	Watercourse	Spinaway Creek	105	Significant Flora	P4	
Crushing and Screening Location 5	234	Significant Flora	P3	424	Watercourse	Lionel Creek	
Diesel Generator 1	261	Significant Flora	P3	460	Watercourse	Branch of McPhee Creek	
Diesel Generator 2	328	Significant Flora	P3	86	Watercourse	Lionel Creek	
Diesel Generator 3	335	Significant Flora	P4	44	Watercourse	Branch of McPhee Creek	
Diesel Generator 4	314	Significant Flora	P3	252	Significant Flora	P3	
Diesel Generator 5	342	Significant Flora	P3	275	Significant Flora	P3	
Diesel Generator 7	603	Cave	CMPC-09				New infrastructure
Fuel Storage Facility 1	254	Significant Flora	P3	6	Watercourse	Lionel Creek	
Fuel Storage Facility 2	321	Significant Flora	P3	351	Significant Flora	P3	
Fuel Storage Facility 3	349	Significant Flora	P4	323	Significant Flora	P3	
Fuel Storage Facility 4	329	Watercourse	Lionel Creek	12.03	Watercourse	Branch of McPhee Creek	
Fuel Storage Facility 5	456	Watercourse	Lionel Creek	335	Watercourse	Branch of McPhee Creek	
Main Camp Sprayfield	300	Significant Flora	P3	354	Significant Flora	P3	
Main Camp WWTP	267	Significant Flora	P3	319	Significant Flora	P3	
Mine Services Area	446	Significant Flora	P4	35	Watercourse	Lionel Creek	
MSA Sprayfield	208	Watercourse	Lionel Creek	447	Cave	CMPC-09	
MSA WWTP	343	Significant Flora	P4	40	Watercourse	Lionel Creek	
RO Plant 1	268	Significant Flora	P3	286	Significant Flora	P3	
RO Plant 2	305	Significant Flora	P3	247	Watercourse	Lionel Creek	

OFFICIAL

RO Plant 3	323	Significant Flora	P4	389	Significant Flora	P3	
Temporary Mine Services Area	398	Watercourse	Lionel Creek				New infrastructure
Turkey's Nest 1	237	Watercourse	Lionel Creek	392	Watercourse	Lionel Creek	
Turkey's Nest 5	281	Significant Flora	P3				New infrastructure
Used Tyre Storage	491	Cave	MCSM207	148	Watercourse	Lionel Creek	
Weighbridge Septic Tank and Leach Drain	325	Significant Flora	P3				New infrastructure
Workshop & Washdown	433	Watercourse	Lionel Creek	136	Watercourse	Lionel Creek	



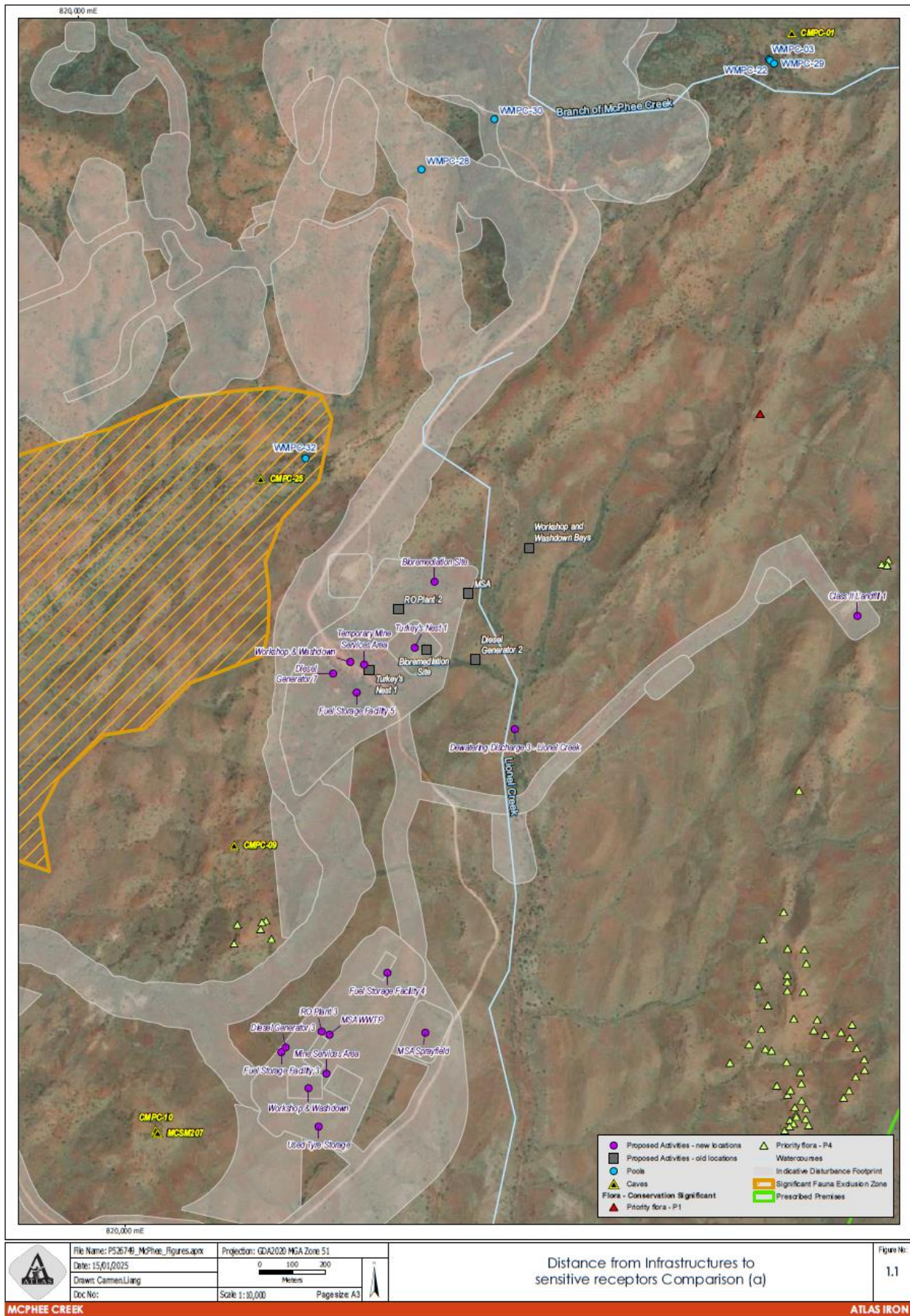
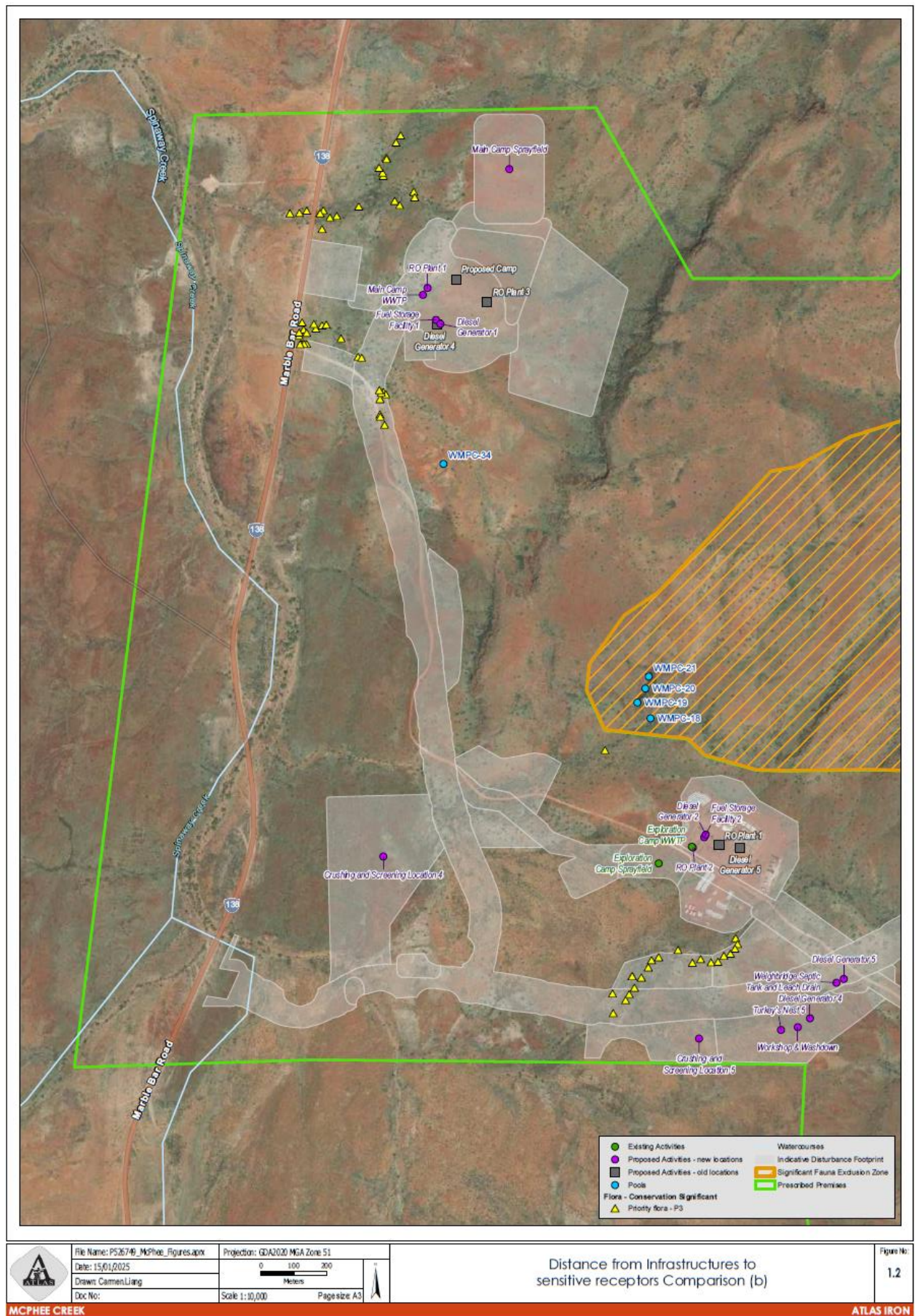


Figure 1: Distance of new infrastructure to sensitive receptors





**Figure 2: Distance of new infrastructure to sensitive receptors**

The department has not re-assessed the potential emissions and discharges from the Premises during construction, commissioning and operation as the risk profile has not changed significantly with the relocation of the infrastructure. Refer to *W6780/2023/1 Decision Report* for the original risk assessment.

The department has determined that the existing controls conditioned within the works approval are sufficient in ensuring that the emissions have minimal impact on the nearby environment.

### 3. Consultation

The Works Approval Holder was provided with the draft Amendment Report on 01 April 2025. On 09 April 2025 the Works Approval Holder waived the comment period.

### 4. Conclusion

Based on the assessment in this Amendment Report, the Delegated Officer has determined that an amended works approval will be granted, subject to conditions commensurate with the determined controls and necessary for administration and reporting requirements.

#### 4.1 Summary of amendments

Table 2 below provides a summary of the proposed amendments and will act as a record of implemented changes. All proposed changes have been incorporated into the Revised works approval as part of the amendment process.

**Table 2: Summary of works approval amendments**

Condition no.	Proposed amendments
Schedule 1: Figures 3, 5, 6, 7, 9, 10, 11, and 12	Updated figures representing the new locations of infrastructures within the prescribed premises.

### References

1. Department of Environment Regulation (DER) 2015, *Guidance Statement: Setting Conditions*, Perth, Western Australia.
2. Department of Water and Environmental Regulation (DWER) 2020, *Guideline: Environmental Siting*, Perth, Western Australia.
3. DWER 2020, *Guideline: Risk Assessments*, Perth, Western Australia.
4. W6780/2023/1 Decision Report (granted 17 September 2024) available at <https://www.der.wa.gov.au/our-work/licences-and-works-approvals/current-licences>.