



## Application for Works Approval

### Part V Division 3 of the *Environmental Protection Act 1986*

---

<b>Works Approval Number</b>	W3224/2026/1
<b>Applicant</b>	Schutz Australia Pty Ltd
<b>ACN</b>	090 995 958
<b>File number</b>	APP-0032241
<b>Premises</b>	Schutz Australia 120 Artemis Loop WATTLEUP WA 6166  Legal description Lot 517 on Plan 425807 Certificate of Title Volume 4036 Folio 132 As defined by the coordinates in Schedule 2 of the issued works approval
<b>Date of report</b>	11 May 2026
<b>Decision</b>	Works approval granted

## Table of Contents

<b>1</b>	<b>Decision summary</b> .....	<b>3</b>
<b>2</b>	<b>Scope of assessment</b> .....	<b>3</b>
	2.1 Regulatory framework .....	3
	2.1 Application summary and overview of the premises .....	3
<b>3</b>	<b>Risk assessment</b> .....	<b>9</b>
	3.1 Source-pathways and receptors .....	9
	Emissions and controls.....	9
	3.1.2. Receptors .....	11
	3.1.3. Native vegetation clearing.....	<b>Error! Bookmark not defined.</b>
	3.2 Risk ratings.....	13
<b>4</b>	<b>Consultation</b> .....	<b>17</b>
<b>5</b>	<b>Conclusion</b> .....	<b>17</b>
	<b>References</b> .....	<b>17</b>
	<b>Appendix 1: Summary of Licence Holder’s comments on risk assessment and draft conditions</b> .....	<b>18</b>
	Table 1: Proposed applicant controls .....	9
	Table 2: Sensitive human and environmental receptors and distance from prescribed activity .....	11
	Table 3: Risk assessment of potential emissions and discharges from the premises during construction and operation .....	14
	Table 4: Consultation .....	17
	Figure 1: Current Overall Process .....	<b>Error! Bookmark not defined.</b>
	Figure 2: SVR Recycling Process .....	<b>Error! Bookmark not defined.</b>
	Figure 3: IBC Recycling Process.....	<b>Error! Bookmark not defined.</b>
	Figure 4: IBC Recycling Process.....	<b>Error! Bookmark not defined.</b>
	Figure 5: Sensitive receptor map .....	12

# 1 Decision summary

This decision report documents the assessment of potential risks to the environment and public health from emissions and discharges during the construction and operation of the premises. As a result of this assessment, works approval W3224/2026/1 has been granted.

## 2 Scope of assessment

### 2.1 Regulatory framework

In completing the assessment documented in this decision report, the Department of Water and Environmental Regulation (the department; DWER) has considered and given due regard to its regulatory framework and relevant policy documents which are available at <https://dwer.wa.gov.au/regulatory-documents>.

### 2.1 Application summary and overview of the premises

On 6 November 2025, the applicant submitted an application for a works approval to the department under section 54 of the Environmental Protection Act 1986 (EP Act).

The Delegated Officer considered that further information was required to validate the application, and additional supporting information was provided to DWER on 24 February 2026.

Following a review of the information provided, the Delegated Officer considered that sufficient information had been provided to validate the application and commence the risk assessment.

The applicant (Schütz Australia Pty Ltd) operates a drum and container recycling business and is proposing to relocate its current operations in North Coogee and construct a warehouse at 120 Artemis Loop in Wattleup. The applicant wants to establish the same operations as approved under its current license (L5154/1989/10). These activities include:

- Used 110 litre agricultural/ industrial chemical small volume refillable drum (SVR) storage,
- External and internal washing/rinsing (where required) and repackaging of SVR drums for reuse,
- Shredding/removal of damaged drums,
- Storage of reconditioned drums prior to return to chemical manufacturers,
- Used intermediate bulk container (IBC) storage, reconditioning and recycling,
- A vacuum distillation wastewater treatment system, and
- Licensed discharge of treated wash-water to the Water Corporation sewer in accordance with a Trade Waste Permit.

The premises will be located within the Orion Industrial Park zone, under the Latitude 32 Industry Zone structure plan. The Orion Park development area is a former limestone quarry, and the proposed development is expected to house around 100 general industrial businesses.

The works approval application encompasses the construction of the warehouse and installation of necessary equipment, including:

- Conveyor belt system;

- Auto deporting equipment;
- Inclined platform and associated equipment for draining returned IBCs;
- Band saw and associated equipment for cutting and scraping IBCs;
- Shredder;
- Closed loop wet granulator system including the wastewater treatment system (holding tanks and chemical dosing) for this unit;
- Auto destacker equipment;
- Hoses and pump for cage washing and equipment for repairing cages;
- New wash lines for IBC's & SVR's;
- State of the art IBC & SVR washing lines;
- Leaking testing equipment for Refurbished/Washed IBCs.

## 2.2 Premises operations

Operations at the current facility involve receipt of used 110 litre drums and containers from agriculture and industrial facilities transported to the premises by heavy haulage trucks. Upon receipt, the drums are sorted according to chemical residue group and stored in a bunded or built-in storage awaiting recycling.

External and internal washing/rinsing is carried out using water sourced from an onsite bore. Washings are then processed through an onsite water treatment plant before being discharged to the Water Corporation Sewer. The wastewater treatment process includes primary and secondary wastewater treatment through an onsite Hydroxon™ Plant, which centres around an advanced, catalytic oxidation water treatment technology.

Hydrocarbons and other chemical residues collected from the incoming drums and wastewater treatment are consolidated into IBCs. When sufficient full IBCs are collected, they are then collected by licenced controlled waste carriers for disposal at an appropriately licenced waste facility. Drum washing and IBC processing is carried out in enclosed bunded areas onsite. Any potential contaminated runoff is directed into the Water Corporation system. Figure 1, Figure 2, and Figure 3 below provide a visual representation of the process at the current premises. This same flow process will be implemented at the new premises under the works approval.

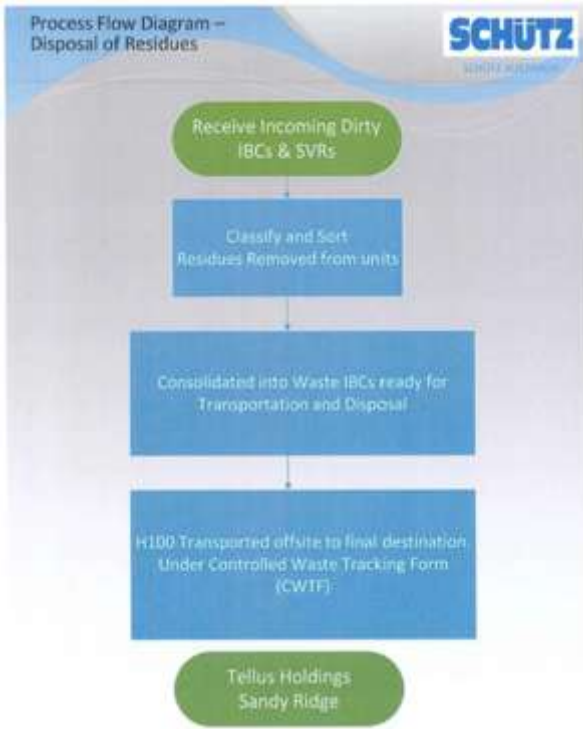


Figure 1: Current overarching waste handling process

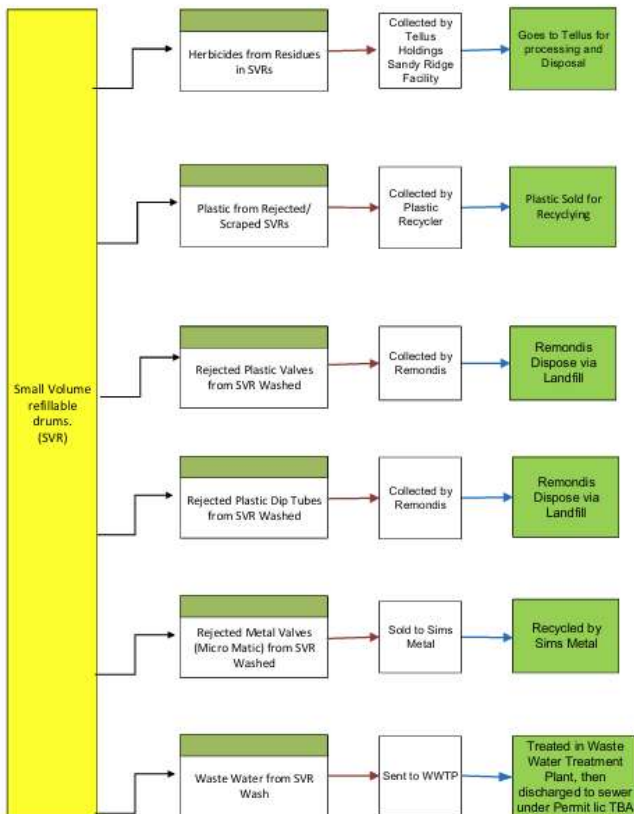


Figure 2: SVR recycling process

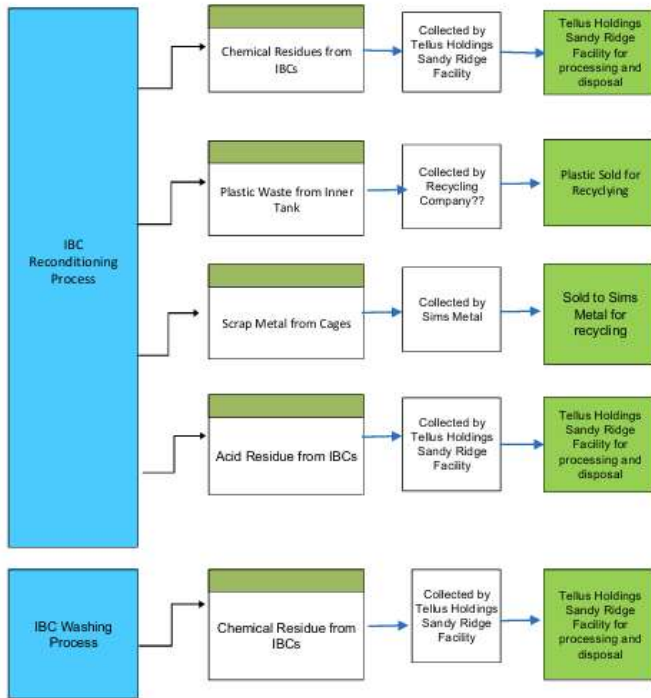


Figure 3: IBC recycling process

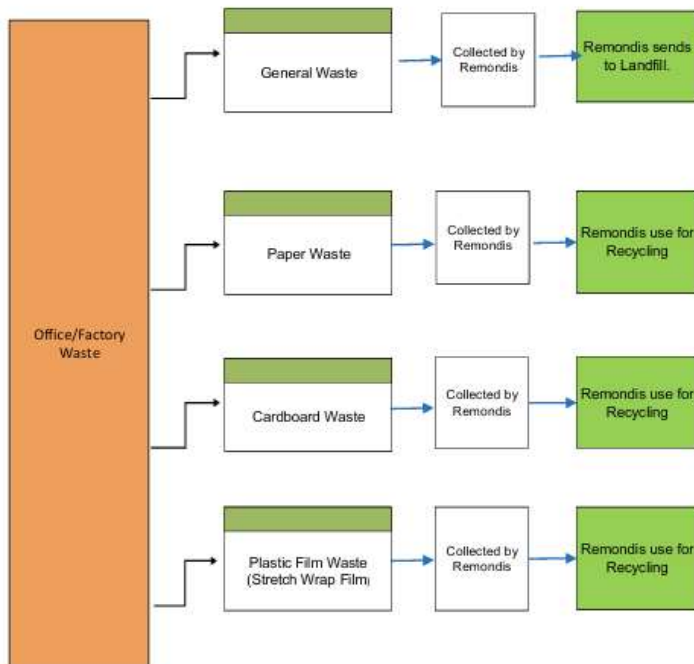


Figure 4: IBC recycling process

## 2.3 Waste processing

Details of each stage of the process have been extracted from the application supporting information and summarised below.

### Storage Area

The IBC ticket collection and the IBC storage area will be in the first flush area. This is where trucks will offload the returned IBCs, and where they are screened before storage. Returned IBCs will be sorted according to chemical group and get scheduled for draining. SVR will be offloaded from trucks on the loading dock and are stored in the first flush area.

### Flush Area Holding Tanks

The first flush area includes 3 x 50,000 L holding tanks, designed to store approximately 26,000 L per tank. The holding tanks in the flush area have been specifically designed to enable gravity feed over the required distance, allowing for effective flow control via tank-mounted flow metres. This design is intended to eliminate the risk of spills to ground. The current design and Development Application (DA) have been submitted based on capturing 5 mm of rainfall, and the tanks will provide additional capacity if required. This design ensures operational flexibility and compliance with the DA requirement.

### IBC Cutting and Scrapping

Once IBCs are received onsite, they are classified according to the product residue type. The different classifications may include acids, alkalis, amines, isocyanates, flammable liquids, standard and organic acids. This classification is important to ensure that incompatible chemicals are not mixed. Any excess chemicals are decanted from the IBCs. Decanted liquid is combined in compatible batches in accordance with Schütz's classification system.

After drainage and disassembling, the plastic inner of the IBC will be placed onto a conveyor belt line that will take it to the band saw. The band saw will cut the IBC approximately 20 cm from the base into two parts: top and bottom. Any liquid residue on the IBC bottoms will be manually scraped off into a waste container. The scraped IBC bottom will be placed on the conveyor belt near the entry of the shredder. The IBC top will also feed into the shredder on the conveyor belt. The plastic base and main body of the inner tank are then shredded and granulated.

### 110 Litre SVR drums

Drums are separated by herbicide type and then washed in large batches to reduce internal washing waste. Drum washing runs are planned several days in advance so that drums with compatible chemicals can be washed, this also helps reduce internal washing waste. Residual herbicides are emptied by vacuum prior to washing. Neat residues are collected in IBCs for disposal. Once a drum washing run is completed, the internal washings are also added to the neat residues. This waste is then disposed of as controlled waste. Drums that are past their 5-year use-by date or are damaged are washed and the drums shredded and granulated.

### Wet granulator system

A shredder and wet granulator loop system will be installed to facilitate the proposed IBC and SVR reconditioning operations onsite. The IBCs from the cut down process will be shredded in the shredder and then enter the wet granulator and be granulated into small sizes (8-10 mm). The plastic pieces are washed during grinding in the wet granulator and further washed in the friction washer. After washing the plastic granules are dried in the friction drier, stored, and ultimately transferred offsite for recycling into new Schütz products.

The wet granulator and friction washer will use recycled water from its own wastewater treatment system as wash water. The water removed from the friction washer and friction drier will be directed to the onsite wastewater water treatment system.

## Wastewater treatment plant

The wastewater treatment system is a part of the closed loop wet granulator system, and is comprised of the following key equipment:

- Buffer tank,
- Clear water tank,
- Treatment tank,
- Sludge holding tank,
- Emergency tank,
- Vibration filter, and
- Filter press

The system will be located adjacent to the granulator unit and will be treating water from the wet granulator unit, friction drier so it can be reused in these processes units. Water treatment in the system will involve filtering out particles from water in a vibration filter and removing fine particles by flocculation. Water in the sludge generated from the filtration and flocculation processes will be removed in the filter press and the sludge will be sent off to Tellus Holdings for disposal.

Additional water will be added to the clear water tank to replace water lost during the treatment process. Samples will be collected from the treatment tank to determine the appropriate dosing agent and concentration required in the tank. Water in the wastewater treatment system will be recycled as a batch process. After a period this water will be discharged as wastewater and disposed to the sewer under a Trade Waste Agreement.

## 2.4 Premises exclusions

Wastewater treatment plant (WWTP) operations are excluded from this works approval assessment (W3224/2026/1), as they are separately approved under local Trade Waste bylaws. Treated effluent is discharged to sewer in compliance with those regulations.

The operation process produces liquid waste, which is mainly slurry from the wastewater treatment plant and herbicides residues collected from IBC and SRV drums before the recycling process. Water from drum washing is also considered waste as it contains herbicides and solvent residues. The herbicides are removed from wastewater before it is discharged into the sewer to meet the regulated permit levels (Trade Waste Permit) in the water treatment plant. The remaining residue after wastewater is treated and that collected from drums is sent offsite to Tellus Holding for disposal as controlled waste. No untreated water will be released into sewer at any given time.

The premises relates to the category and assessed production capacity under Schedule 1 of the Environmental Protection Regulations 1987 (EP Regulations) which are defined in works approval W3224/2026/1. The infrastructure and equipment relating to the premises category and any associated activities which the department has considered in line with Guideline: Risk Assessments (DWER 2020) are outlined in works approval W3224/2026/1.

### 3 Risk assessment

The department assesses the risks of emissions from prescribed premises and identifies the potential source, pathway and impact to receptors in accordance with the *Guideline: Risk Assessments* (DWER 2020).

To establish a risk event there must be an emission, a receptor which may be exposed to that emission through an identified actual or likely pathway, and a potential adverse effect to the receptor from exposure to that emission.

#### 3.1 Source-pathways and receptors

##### Emissions and controls

The key emissions and associated actual or likely pathway during premises construction and operation which have been considered in this decision report are detailed in Table 1: Proposed applicant controls below. Table 1: Proposed applicant controls also details the control measures the applicant has proposed to assist in controlling these emissions, where necessary.

**Table 1: Proposed applicant controls**

Emission	Sources	Potential pathways	Proposed controls
<b>Construction</b>			
Dust	Placement of processing equipment. Vehicle and equipment movements.	Air / windborne pathway	<p><b>No controls provided</b></p> <p>However, The Delegated Officer is aware that the provisions of section 49 of the EP Act are sufficient to regulate dust emissions during construction.</p> <p>The Delegated Officer is also aware that the premises site roads and delivery areas are sealed with concrete and/or bitumen, preventing dust dispersion into the atmosphere.</p>
Noise			<p><b>No controls provided</b></p> <p>However, The Delegated Officer is aware that the activities at the Premises will need to comply with the <i>Environmental Protection (Noise) Regulations 1997</i>.</p>
<b>Operation</b>			
Dust and fume	Vehicle movements, cut and scrap operations, decanting of liquids and chemicals	Air / windborne pathway	<p>The premises site roads and delivery areas are sealed with concrete commercial barrier kerbing to all edges and with bituminous tack coat to surface, preventing dust dispersion into the atmosphere.</p> <p>All processing activities will be undertaken within enclosed warehouse.</p> <p>Roof exhaust fans will be installed to create forced air circulation inside the building.</p> <p>Concrete and bitumen areas will be</p>

Emission	Sources	Potential pathways	Proposed controls
			<p>maintained in good condition.</p> <p>All processing of metals (sorting, separating, or grinding) will be undertaken within a dedicated processing building.</p> <p>Good housekeeping services maintained within the warehouse.</p>
Odour	Chemical residues from incoming drums/IBCs	Air / windborne pathway	<p>Chemical handling is streamlined to minimise vapour generation.</p> <p>Handling of incoming drums occurs within a shed.</p>
Noise and vibration	<p>Delivery and storage of material, Operation of processing equipment (Band saw, Herbold granulator, air compressor, conveyor system, shears, WWTP and shredder),</p> <p>operation of mobile equipment and vehicles</p>	Air/windborne pathway causing impacts to health and amenity	<p>Operational hours limited to day period only (Monday to Saturday 0700-1900).</p> <p>All processing activities will be carried out inside the warehouse.</p> <p>Non-tonal reversing beepers will be used on mobile handling plant (e.g., forklifts).</p> <p>Will ensure that all equipment is in good working order and is maintained regularly.</p>
Smoke (particulates and noxious gases)	Uncontrolled waste metal fire	Air/windborne pathway causing impacts to health and amenity	<b>No controls provided</b>
Fire debris and washwater	Firefighting activities in the event of an uncontrolled waste metal fire	Overland flow to stormwater infrastructure	<b>No controls provided</b>
Hydrocarbon or chemical spill	Drum washing	Contamination of stormwater, direct discharge to land	<p>Only environmentally safe cleaning solution will be used.</p> <p>All processing activities will be carried out in building with sealed concrete floors.</p> <p>Hydrocarbon or chemical spills reported internally and immediately cleaned up.</p> <p>All chemical substances will be stored within tanks or silos in appropriately bunded area.</p> <p>Water from washing drums will be directed to the wash water treatment plant and get disposed into the Water Corp sewer systems.</p> <p>Chemicals and hydrocarbons will be drained</p>

Emission	Sources	Potential pathways	Proposed controls
			in waste containers, stored temporarily in bunded areas prior to offsite disposal.

### 3.1.2. Receptors

In accordance with the *Guideline: Risk Assessment* (DWER 2020), the Delegated Officer has excluded the applicant’s employees, visitors, and contractors from its assessment. Protection of these parties often involves different exposure risks and prevention strategies and is provided for under other state legislation.

Table 2: Sensitive human and environmental receptors and distance from prescribed activity below provides a summary of potential human and environmental receptors that may be impacted as a result of activities upon or emission and discharges from the prescribed premises (*Guideline: Environmental Siting* (DWER 2020)).

**Table 2: Sensitive human and environmental receptors and distance from prescribed activity**

Human receptors	Distance from prescribed activity
Residential Premises	The closest residential property (Lot 4, No. 900) Rockingham Road is located on the adjoining western boundary of the site approximately 242m.  Next closest residential property is located approximately 270 m to the southeast of the site is no longer occupied. The lot has been purchased by Development WA for the purposes of road construction.
Industrial premises	Immediately adjacent to the premises are other industrial premises
Environmental receptors	Distance from prescribed activity
Brownman Swamps ESA	Premises located approximately 379.73 m west of the site boundary.
Henderson Conservation Park	Located approximately 394.28 m west of the site boundary.
SP Migratory Bird Species	Migratory bird presence in the area

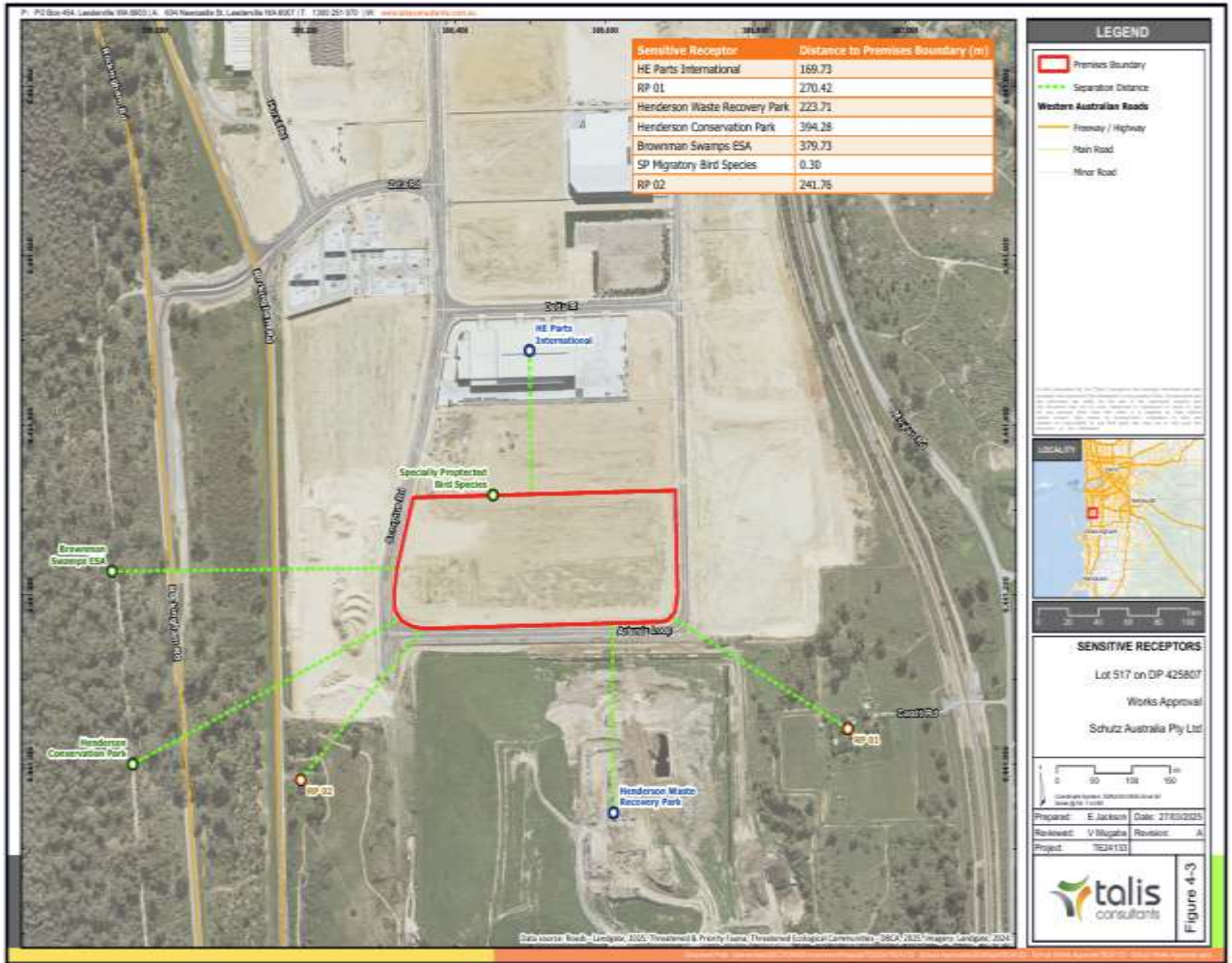


Figure 5: Sensitve receptor map

## 3.2 Risk ratings

Risk ratings have been assessed in accordance with the *Guideline: Risk Assessments* (DWER 2020) for each identified emission source and takes into account potential source-pathway and receptor linkages as identified in Section 3.1. Where linkages are in-complete they have not been considered further in the risk assessment.

Where the applicant has proposed mitigation measures/controls (as detailed in Section 3.1), these have been considered when determining the final risk rating. Where the delegated officer considers the applicant's proposed controls to be critical to maintaining an acceptable level of risk, these will be incorporated into the works approval as regulatory controls.

Additional regulatory controls may be imposed where the applicant's controls are not deemed sufficient. Where this is the case the need for additional controls will be documented and justified in Table 3: Risk assessment of potential emissions and discharges from the premises during construction and operation<sup>3</sup>.

Works approval W6968/2024/1 that accompanies this decision report authorises construction only. The conditions in the issued works approval, as outlined in Table 3: Risk assessment of potential emissions and discharges from the premises during construction and operation<sup>3</sup> have been determined in accordance with *Guidance Statement: Setting Conditions* (DER 2015).

A licence is required to authorise emissions associated with the ongoing operation of the premises. A risk assessment for the operational phase has been included in this decision report, however licence conditions will not be finalised until the department assesses the licence application.

**Table 3: Risk assessment of potential emissions and discharges from the premises during construction and operation**

Risk events					Risk rating <sup>1</sup> C = consequence L = likelihood	Applicant controls sufficient?	Conditions <sup>2</sup> of works approval	Justification for additional regulatory controls
Sources / activities	Potential emission	Potential pathways and impact	Receptors	Applicant controls				
<b>Construction</b>								
Construction of the warehouse, placement of infrastructure and associated equipment  Vehicle movements	Dust	Air / windborne pathway causing impacts to health and amenity	Residences within close proximity, Closest premises is located 242 m from the premises	Refer to Section 3.1	C = Minor L = Rare <b>Low Risk</b>	Y	N/A	The Delegated Officer is aware that dust Emission can be regulated under the general provisions of the EP Act.  Excessive noise emissions can be regulated under the Environmental Protection (Noise) Regulations 1997 (EP Noise Regulations)
	Noise		Immediately adjacent industrial premises  Brownman Swamp ESA is approximately 380 m west of the premises boundary  Conservation park is approximately 395 m southwest of the premises boundary.	Refer to Section 3.1	C = Minor L = Rare <b>Low Risk</b>	Y	N/A	
<b>Operation (including time-limited-operations operations)</b>								
Operation of shredder, Cutting shears, granulator, air compressor and other equipment  Traffic movements and deliveries  Sorting and load preparation	Dust	Air / windborne pathway causing impacts to health and amenity	Residences within close proximity, Closest premises is located 242 m from the premises  Immediately adjacent industrial premises  Brownman Swamp ESA is approximately 380 m west of the premises boundary  Conservation park is approximately 395 m southwest of the premises boundary.	Refer to Section 3.1	C = Moderate L = possible <b>Medium Risk</b>	Y	Conditions 1,2, 3, 4, 5, 8, 9, 10, 11, 12, 13, 25 and 26	The Delegated Officer considers that the Applicant's proposed controls and infrastructure are likely to be sufficient at mitigating dust emissions.  The Delegated Officer considers dust emissions associated with operational activities can be adequately regulated by the general provisions of the EP Act.  The delegated officer considers the applicant's proposed controls to be critical to maintaining an acceptable level of risk, therefore will be incorporated into the works approval and licence as regulatory controls.

Risk events					Risk rating <sup>1</sup> C = consequence L = likelihood	Applicant controls sufficient?	Conditions <sup>2</sup> of works approval	Justification for additional regulatory controls
Sources / activities	Potential emission	Potential pathways and impact	Receptors	Applicant controls				
	Noise	Air / windborne pathway causing impacts to health and amenity	Residences within close proximity, Closest premises is located 242 m from the premises  Immediately adjacent industrial premises	Refer to Section 3.1	C = Moderate  L = possible  <b>Medium Risk</b>	N	<b><u>Condition 1,2, 3, 4, 5, 8, 9,10, 11,14, 18,21, 22, 23, 24, 25 and 26</u></b>	The Delegated Officer considers that noise verification monitoring is required to demonstrate the noise levels from operations comply with <i>Environmental Protection (Noise) Regulations 1997</i> at the Premises boundary.
Stockpiling of metals, IBCs	Fire/smoke	Air / windborne pathway causing impacts to health and amenity	Residences within close proximity, Closest premises is located 242 m from the premises  Immediately adjacent industrial premises  Brownman Swamp ESA is approximately 380 m west of the premises boundary  Conservation park is approximately 395 m southwest of the premises boundary.  Migratory bird area 30m from the processing warehouse	Refer to Section 3.1	C = Severe  L = Unlikely  <b>High Risk</b>	N	<b><u>Condition 1,2, 3, 4, 5, 6, 7, 8, 9, 10, 11, 18, 19, 20, 25, 26 and 27</u></b>	The Delegated Officer considers a fire prevention and management plan can help reduce the risks of impacts of fire and can be regulated through conditions in the works approval and the license.  The works approval holder will be required to implement a Fire and Emergency Management plan that is consistent with AS3745.  The Delegated Officer also considers the applicant's proposed controls to be critical to maintaining an acceptable level of risk, therefore will be incorporated into the works approval and licence as regulatory controls.
Fire - Abnormal operations	Potentially contaminated stormwater/fire fighting water	Overland flow and subsurface seepage causing impacts on human health, soil and groundwater quality	Residences within close proximity, Closest premises is located 242 m from the premises  Immediately adjacent industrial premises  Brownman Swamp ESA is approximately 380 m west of the premises boundary  Conservation park is	Refer to Section 3.1	C = Moderate  L = Unlikely  <b>Medium Risk</b>	Y	Condition 1,2, 3, 4, 5, 6, 7, 8, 9, 10, 11, 15, 16, 17, 18, 19, 20, 25, 26 and 27	The Delegated Officer considers that the Applicant's proposed infrastructure and management controls are likely to be sufficient at mitigating emissions from contaminated stormwater.

Works Approval: W3224/2026/1

Risk events					Risk rating <sup>1</sup> C = consequence L = likelihood	Applicant controls sufficient?	Conditions <sup>2</sup> of works approval	Justification for additional regulatory controls
Sources / activities	Potential emission	Potential pathways and impact	Receptors	Applicant controls				
			<p>approximately 395 m southwest of the premises boundary.</p> <p>Migratory bird area 30m from the processing warehouse.</p> <p>Underlying groundwater 4 – 4.7 mbgl</p>					
Spil or leak of wash water	Contaminated washwater	Overland flow and subsurface seepage causing impacts on human health, soil and groundwater quality	<p>Residences within close proximity, Closest premises is located 242 m from the premises</p> <p>Immediately adjacent industrial premises</p> <p>Brownman Swamp ESA is approximately 380 m west of the premises boundary</p> <p>Conservation park is approximately 395 m southwest of the premises boundary.</p> <p>Migratory bird area 30m from the processing warehouse</p> <p>Underlying groundwater 4 – 4.7 mbgl.</p>	Refer to Section 3.1	<p>C = Minor</p> <p>L = Unlikely</p> <p><b>Medium Risk</b></p>	Y	Condition 15, 16, 17, and 27	<p>The Delegated Officer considers that the Applicant's proposed controls and the standard conditions within the works approval are likely to be sufficient at mitigating contaminated stormwater emissions during time limited operations.</p> <p>The delegated officer considers the applicant's proposed controls to be critical to maintaining an acceptable level of risk, therefore will be incorporated into the works approval and licence as regulatory controls.</p>

Note 1: Consequence ratings, likelihood ratings and risk descriptions are detailed in the *Guideline: Risk Assessments* (DWER 2020).

Note 2: Proposed applicant controls are depicted by standard text. **Bold and underline text** depicts additional regulatory controls imposed by department.

## 4 Consultation

Table 4: Consultation4 provides a summary of the consultation undertaken by the department.

**Table 4: Consultation**

Consultation method	Comments received	Department response
Application advertised on the department's website on 11/03/2026	None received Public consultation end date: 1/04/26	N/A
Local Government Authority advised of proposal on 11/03/2026	None received	N/A
Applicant was provided with draft documents on 07/04/2026	The Applicant provided comments on 30/04/2026 Refer to Appendix 1	Refer to Appendix 1

## 5 Conclusion

Based on the assessment in this decision report, the delegated officer has determined that a works approval will be granted, subject to conditions commensurate with the determined controls and necessary for administration and reporting requirements.

Schutz Australia Pty Ltd will require a licence to authorise emissions associated with the ongoing operation of the premises.

## References

1. Department of Environment Regulation (DER) 2015, *Guidance Statement: Setting Conditions*, Perth, Western Australia.
2. Department of Water and Environmental Regulation (DWER) 2020, *Guideline: Environmental Siting*, Perth, Western Australia.
3. DWER 2020, *Guideline: Risk Assessments*, Perth, Western Australia.

## Appendix 1: Summary of Licence Holder's comments on risk assessment and draft conditions

Condition	Summary of Licence Holder's comment	Department's response
<b>Works Approval</b>		
<b>Waste Acceptance</b> Condition 9: Table 4	Typographical changes requested.  Operations at the premises will not be including grease bins, the applicant is requesting for this part to be removed from the conditions.	Changes implemented.
<b>Waste Processing</b> Condition 11: Table 5	The warehouse at the premises is designed for safe storage of 70,000 new and washed drums.  A total of 7,000 pieces of IBCs new, refurbished and laundered will be stored at any one time on site.	Noted.  Storage quantities incorporated into condition.
<b>Emissions and Discharges</b> Condition 14	The applicant anticipates the business will grow over time and will require to operate on a 24-hour bases to accommodate the growth.  Initially the project will only be operating during the day (day shift) and change to 24-hour operations in future. Schutz is requesting a change in operating hours from 07:00 to 19:00 to 24 hours service.	The Delegated Officer considers that extending operations to 24 hour is not appropriate until it has been verified that site operations will comply with the <i>Environmental Protection (Noise) Regulations 1997</i> (EP Noise Regulations).  Conditions 21 – 24 of the works approval require the applicant to undertake an environmental noise assessment to demonstrate operations will comply with the EP Noise Regulations. It is anticipated that this assessment will be submitted with the subsequent licence application for the premises to support ongoing operations. The applicant is advised to seek to incorporate 24 hour operations through the licence application, where compliance with the EP Noise Regulations is submitted as supporting documentation to

Condition	Summary of Licence Holder's comment	Department's response
		request this change. To ensure compliance with the EP Noise Regulations over 24 hrs is demonstrated within the noise assessment, the Delegated Officer has added a requirement for the noise assessment to consider 24 hour operations to condition 21.
<b>Records and Reporting</b> Condition 28 (c)	Cross referencing typographical error noted.	Error corrected.
Schedule 1 - Maps	Premises boundary coordinates provided.	Coordinates have been incorporated.
<b>Decision Report</b>		
<b>Receptors</b> Section 3.1.2	Typographical changes requested. The applicant wants to notify the Department that the second closest residential property RP01 (Attachment B) to the premises is no longer occupied. The Lot has been purchased by Development WA for the purposes of road construction.	Noted. Decision report updated.
<b>Attachment A</b> Fire services design	Ground floor fire service layout and coverage plan provided	Noted.