



## Application for Works Approval

### Part V Division 3 of the *Environmental Protection Act 1986*

**Works Approval Number** W2958/2025/1

**Applicant** Yindjibarndi Energy Pty Ltd

**ACN** 667 821 865

**File number** APP-0028471

**Premises** Jinbi Solar Facility

Part of Unallocated Crown Land PIN 1017635 and 1017648

TOM PRICE WA 6751

As defined by the premises map attached to the issued works approval

**Date of report** 27/06/2025

**Decision** Works approval granted

**Alana Kidd**  
**MANAGER, GREEN ENERGY**

an officer delegated under section 20 of the *Environmental Protection Act 1986* (WA)

## Table of Contents

<b>1. Decision summary .....</b>	<b>1</b>
<b>2. Scope of assessment .....</b>	<b>1</b>
2.1 Regulatory framework .....	1
2.2 Application summary and overview of premise .....	1
2.3 Legislative context and other approvals .....	1
<b>3. Risk assessment.....</b>	<b>2</b>
3.1 Source-pathways and receptors .....	2
3.1.1 Emissions and controls .....	2
3.1.2 Receptors.....	3
3.2 Risk ratings.....	6
<b>4. Consultation .....</b>	<b>8</b>
<b>5. Conclusion .....</b>	<b>8</b>
<b>References.....</b>	<b>8</b>

Table 1 Other Approvals relevant to the premises.....	2
Table 2: Proposed applicant controls .....	2
Table 3: Sensitive human and environmental receptors and distance from prescribed activity.	4
Table 4: Risk assessment of potential emissions and discharges from the premises during construction, and operation .....	6
Table 5: Consultation .....	8
Figure 1 Site location .....	5

## 1. Decision summary

This decision report documents the assessment of potential risks to the environment and public health from emissions and discharges during the installation and operation of the premises. As a result of this assessment, works approval W2958/2025/1 has been granted.

## 2. Scope of assessment

### 2.1 Regulatory framework

In completing the assessment documented in this decision report, the Department of Water and Environmental Regulation (the department; DWER) has considered and given due regard to its regulatory framework and relevant policy documents which are available at <https://dwer.wa.gov.au/regulatory-documents>.

### 2.2 Application summary and overview of premise

The Applicant, Yindjibarndi Energy Corporation (YEC) was formed to develop, own and operate large scale renewable energy projects on Yindjibarndi Ngurra (country) in Western Australia's Pilbara Region. YEC is proposing to develop the Jinbi Solar Facility on Yindjibarndi Ngurra, within the Shire of Ashburton. The greater Jinbi Solar Facility proposes a series of solar arrays of up to 150 Megawatts, as well as associated hardware and infrastructure across an approximate 527.21 hectare project area.

As a component of the Jinbi Solar Facility's construction phase, and to minimise the volume of material required to be imported to the site, YEC propose to crush and screen surface rocks and boulders from the project area for use as a road base in the various access tracks which form a key component of the development design. Less than 110,000 tonnes of material is proposed to be crushed and screened for this purpose over a six-month campaign basis. The works will be undertaken with the use of a mobile plant, which will be situated at various locations throughout the project area as required during this period and removed once the works are completed.

On 07 April 2025, the applicant submitted an application for a works approval to the department under section 54 of the *Environmental Protection Act 1986* (EP Act).

The application is to undertake construction works relating to crushing and screening at the premises. The premises is approximately 53 km south of Roebourne.

The premises relates to the category and assessed production / design capacity under Schedule 1 of the *Environmental Protection Regulations 1987* (EP Regulations) which are defined in works approval W2958/2025/1. The infrastructure and equipment relating to the premises category and any associated activities which the department has considered in line with *Guideline: Risk Assessments* (DWER 2020) are outlined in works approval W2958/2025/1.

### 2.3 Legislative context and other approvals

Given the proposed clearing of up to 516.85 hectares of native vegetation to facilitate crushing and screening works, YEC submitted a clearing permit application to the department February 2024. Subsequently, clearing permit (CPS 10494/1) was issued to YEC, 3 May 2024 in accordance with the *Environmental Protection (Clearing of Native Vegetation) Regulations 2004*. While assessed independently to this works approval, the clearing permit includes relevant conditions prescribing dust abatement and stormwater control measures and a requirement to commence construction of the solar facility no later than three months after undertaking the authorised clearing activities to reduce the potential for dust emissions and loss of topsoil.

Other approvals relevant to the premises are summarised below in Table 1.

**Table 1 Other Approvals relevant to the premises**

Legislation	Number	Approval
<i>Rights in Water and Irrigation Act 1914</i>	Instrument No. PMB211032(1)	Construction of four culverts (Shedule 1, Figure 3) at minor tributaries in the upper Maitland river catchment.  From 25 October 2024 to 30 June 2027.
	GWL211498(1) and GWL211499(1)	Licence to take water with combined total draw not exceeding 100000 kilolitres per annum.
	CAW211465(1) CAW211466(1)	Construct 6 exploratory well(s) for mining or public supply.
<i>Land Administration Act 1997</i>	Licence 00196/2022_A12688668	Licence to Occupy Crown Land (Unallocated Crown Land comprising PINs 1017635) issued to Yiyangu Pty Ltd under Section 91

### 3. Risk assessment

The department assesses the risks of emissions from prescribed premises and identifies the potential source, pathway and impact to receptors in accordance with the *Guideline: Risk Assessments* (DWER 2020).

To establish a risk event there must be an emission, a receptor which may be exposed to that emission through an identified actual or likely pathway, and a potential adverse effect to the receptor from exposure to that emission.

#### 3.1 Source-pathways and receptors

##### 3.1.1 Emissions and controls

The key emissions and associated actual or likely pathway during premises construction / operation which have been considered in this decision report are detailed in Table 2 below which also details the control measures the applicant has proposed to assist in controlling these emissions, where necessary.

**Table 2: Proposed applicant controls**

Emission	Sources	Potential pathways	Proposed controls
<b>Construction (Installation)</b>			
Dust	Placement of screen and associated equipment including vehicle movements	Air / windborne pathway	Avoidance of Priority 2 Ecological Community areas with a variably sized buffer with a minimum distance of 23 m where the project area is also separated by a gorge wall and is

Emission	Sources	Potential pathways	Proposed controls
	(reversing beepers) and mobile crusher  Construction of culverts		larger where the vertical separation from the project area is not so pronounced.  10m buffer to Priority 2 listed flora individual ( <i>Pentalepis trichodesmoides</i> subsp. <i>Hispida</i> )  Complete avoidance of areas registered as cultural heritage sites as well as a buffer around identified sites.
Noise	Placement of screen and associated equipment including vehicle movements (reversing beepers) and mobile crusher	Air / windborne pathway	Plant and equipment placement restricted to daylight hours.  Plant machinery fitted with modern baffled engines that comply with Australian Standards, and other noise suppression systems where required.
<b>Operation – 180 days only time limited operations in accordance with W2958/2025/1 conditions</b>			
Dust	Screening, crushing, unloading, loading and storage of material  Lift-off from stockpiles	Air / windborne pathway	Avoidance of Priority 2 Ecological Community areas with a variably sized buffer with a minimum distance of 23 m where the project area is also separated by a gorge wall and is larger where the vertical separation from the project area is not so pronounced.  Complete avoidance of areas registered as cultural heritage sites as well as a buffer around identified sites.
Noise	Screening, crushing, unloading and loading of material	Air / windborne pathway	Operations restricted to daylight hours.  Plant machinery and vehicles fitted with modern baffled engines that comply with Australian Standards, and other noise suppression systems where required.
Sediment-laden or contaminated stormwater	Screening, crushing, unloading, loading and storage of material	Direct discharge to land	None proposed
Hydrocarbon or chemical discharges	Vehicle movements	Direct discharge to land	None proposed
Sediment laden stormwater (from stockpiles)	Storage of crushed materials	Overland runoff	None proposed

### 3.1.2 Receptors

In accordance with the *Guideline: Risk Assessment* (DWER 2020), the Delegated Officer has excluded the applicant's employees, visitors, and contractors from its assessment. Protection

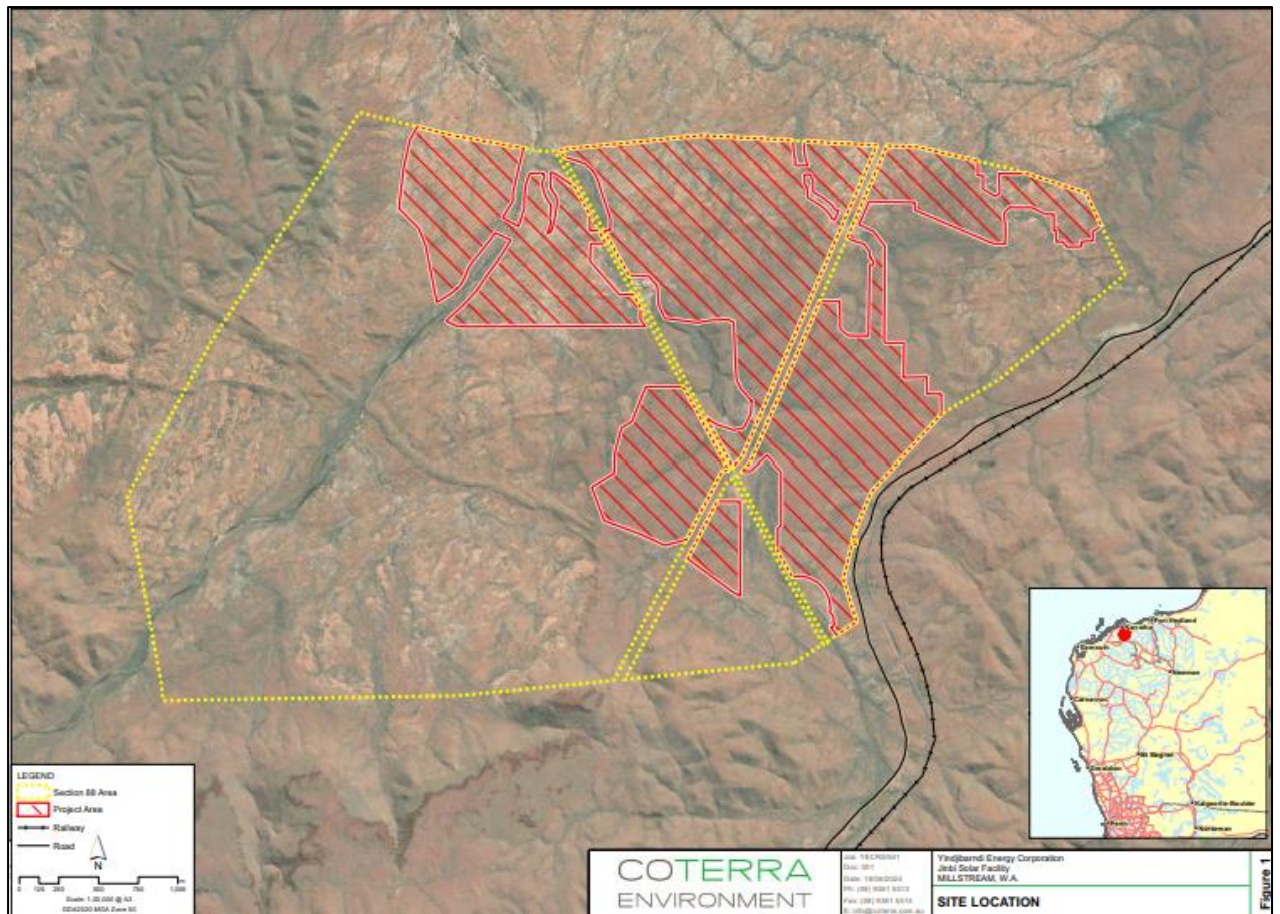
of these parties often involves different exposure risks and prevention strategies, and is provided for under other state legislation.

Table 3 below provides a summary of potential human and environmental receptors that may be impacted as a result of activities upon or emission and discharges from the prescribed premises (*Guideline: Environmental Siting* (DWER 2020)).

**Table 3: Sensitive human and environmental receptors and distance from prescribed activity**

<b>Sensitive Land Uses</b>	<b>Distance from prescribed activity</b>
Ngurrawaana Aboriginal Community	17 km south of the project area
<b>Cultural receptors</b>	<b>Distance from prescribed activity</b>
Aboriginal heritage site (Grinding areas / grooves, Place ID: 10937)	Inside the greater prescribed premises area, approximately 1 km from the prescribed premises boundary.
Jinbi permanent and semi-permanent freshwater springs (Unregistered)	Within the external footprint but outside the project area.
<b>Environmental receptors</b>	<b>Distance from prescribed activity</b>
3 Watercourses – non perennial	Run through the prescribed premises
Priority 2 listed flora community	Within the prescribed premises
Native vegetation	Bordering the prescribed premises
26 fauna species (6 threatened) present during site survey	Within the prescribed premises





### Figure 1 Site location

3.2 Risk ratings

Risk ratings have been assessed in accordance with the *Guideline: Risk Assessments* (DWER 2020) for each identified emission source and takes into account potential source-pathway and receptor linkages as identified in Section 3.1. Where linkages are in-complete they have not been considered further in the risk assessment.

Where the applicant has proposed mitigation measures/controls (as detailed in Section 3.1), these have been considered when determining the final risk rating. Where the delegated officer considers the applicant's proposed controls to be critical to maintaining an acceptable level of risk, these will be incorporated into the works approval as regulatory controls.

Additional regulatory controls may be imposed where the applicant's controls are not deemed sufficient. Where this is the case the need for additional controls will be documented and justified in Table 4.

Works approval W2958/2025/1 that accompanies this decision report authorises installation and time-limited operations. The conditions in the issued works approval, as outlined in Table 4 have been determined in accordance with *Guidance Statement: Setting Conditions* (DER 2015).

A risk assessment for the operational phase has been included in this decision report, however a subsequent licence application is not required due to the completion of works under time limited operations within 180 days of plant mobilisation.

Table 4: Risk assessment of potential emissions and discharges from the premises during construction, and operation

Risk events					Risk rating <sup>1</sup>	Applicant controls sufficient?	Conditions <sup>2</sup> of works approval	Justification for additional regulatory controls
Sources / activities	Potential emission	Potential pathways and impact	Receptors	Applicant controls	C = consequence L = likelihood			
Construction (Installation)								
Placement of screen and associated equipment including vehicle movements and mobile crusher	Dust	<b>Pathway:</b> Air/windborne pathway	Native vegetation	Refer to Section 3.1	C = Moderate L = Unlikely <b>Medium Risk</b>	N	Condition 1, 6, 7	Proposed dust controls are contingent on available equipment. Therefore Misters, rubber shrouds and water cart are to be applied due to proximity to priority native vegetation and heritage areas.
Construction of culverts		<b>Impact:</b> Ecosystem health and amenity	Aboriginal Heritage sites inside and within 1 km of the prescribed premises boundary					
	Noise	<b>Pathway:</b> Air/windborne pathway	Aboriginal Heritage sites inside and within 1 km of the prescribed premises boundary	Refer to Section 3.1	C = Minor L = Unlikely <b>Medium Risk</b>	Y	Condition 1 and 6	N/A
Operation (time-limited-operations only)								
Screening, crushing, unloading, loading and storage of material	Dust	<b>Pathway:</b> Air/windborne pathway	Native Vegetation	Refer to Section 3.1	C = Minor L = Possible <b>Medium Risk</b>	N	Condition 1, 6, 7	Proposed dust controls are contingent on available equipment. Therefore misters, rubber shrouds and water cart are to be applied due to proximity to priority native vegetation and heritage areas.
	Sediment-laden or contaminated stormwater	<b>Pathway:</b> Direct discharge to land impacting surface and ground water quality	Native vegetation including Priority Flora adjacent to premises boundary  Surface water bodies (intercepts through the premises)		Refer to Section 3.1			

Works Approval: W2958/2025/1



Risk events					Risk rating <sup>1</sup>	Applicant controls sufficient?	Conditions <sup>2</sup> of works approval	Justification for additional regulatory controls
Sources / activities	Potential emission	Potential pathways and impact	Receptors	Applicant controls	C = consequence L = likelihood			
		disturbance or impact to surface water quality						
Vehicle movements/refuel and hydrocarbon storage	Hydrocarbon or chemical discharges	<b>Pathway:</b> Direct discharge to land impacting surface and ground water quality  <b>Impact:</b> Ecosystem disturbance or impact to surface water quality	Localised soils and groundwater	Refer to Section 3.1	C = Slight L = Unlikely <b>Low Risk</b>	N/A	N/A	General provisions of the EP Act apply, and the Environmental Protection (Unauthorised discharges) Regulations 2004 adequately regulate this risk event. No additional regulatory controls (in the form of conditions under this works approval) are required.
Storage of crushed materials	Dust		Native vegetation  Aboriginal Heritage sites inside and within 1 km of the prescribed premises boundary	Refer to Section 3.1	C = Minor L = Unlikely <b>Medium Risk</b>	N	Condition 1 and 6	Water cart dust suppression is conditioned as stockpile dust suppression isn't specifically include in the proposal. Fugitive dust risk is deemed sufficient to actively managed dust in significant wind events.
	Sediment laden stormwater (from stockpiles)	<b>Pathway:</b> Overland runoff  <b>Impact:</b> Ecosystem disturbance or impact to surface water quality	Native vegetation including Priority Flora adjacent to premises boundary  Surface water bodies (intercepts through the premises)		C = Moderate L = Possible <b>Medium Risk</b>			The department has determined that stormwater management is required to specifically manage the risk of potential impacts to environmental receptors from sediment laden stormwater emitted during the plants commissioning and time limited operations. Conditions 1 and 6 require the applicant to construct, operate, and maintain stormwater management infrastructure to divert clean stormwater away from the operational areas, as well as capture contaminated and potentially contaminated stormwater within the operational area.

Note 1: Consequence ratings, likelihood ratings and risk descriptions are detailed in the *Guideline: Risk Assessments* (DWER 2020).

Note 2: Proposed applicant controls are depicted by standard text. **Bold and underline text** depicts additional regulatory controls imposed by department.

## 4. Consultation

Table 5 provides a summary of the consultation undertaken by the department.

**Table 5: Consultation**

Consultation method	Comments received	Department response
Application advertised on the department's website on 27 May 2025	None received	N/A
Local Government Authority advised of proposal on 27 May 2025	None received	N/A
Yindjibarndi Aboriginal Corporation advised of proposal on 02 June 2025	Phone call on 26/06/2025 confirmed no objections and no further comment.	Noted
Applicant was provided with draft documents on 13 June 2025	Minor typo to be corrected	Noted

## 5. Conclusion

Based on the assessment in this decision report, the delegated officer has determined that a works approval will be granted, subject to conditions commensurate with the determined controls and necessary for administration and reporting requirements.

## References

1. Department of Environment Regulation (DER) 2015, *Guidance Statement: Setting Conditions*, Perth, Western Australia.
2. Department of Water and Environmental Regulation (DWER) 2020, *Guideline: Environmental Siting*, Perth, Western Australia.
3. DWER 2020, *Guideline: Risk Assessments*, Perth, Western Australia.