



## Application for Licence Amendment

### Part V Division 3 of the *Environmental Protection Act 1986*

---

<b>Licence Number</b>	L9376/2023/1
<b>Licence Holder</b>	Onslow Infracore Pty Ltd
<b>ACN</b>	612 668 201
<b>File Number</b>	DER2023/000047
<b>Premises</b>	<p>Ashburton Infrastructure Project – Haul Road</p> <p>Within mining tenements L08/202, L08/205, L08/206, L08/210, L08/211, L08/212, L08/214, L08/215, L08/216, L08/219, L08/231, L08/232, L08/253 and L08/199</p> <p>As defined by the maps in Schedule of the Licence</p>
<b>Date of Report</b>	2 October 2024
<b>Decision</b>	Revised licence granted

Abbie Crawford  
MANAGER, WASTE INDUSTRIES  
an officer delegated under section 20 of the *Environmental Protection Act 1986* (WA)

## Table of Contents

<b>1. Decision summary .....</b>	<b>1</b>
<b>2. Scope of assessment .....</b>	<b>1</b>
2.1 Regulatory framework .....	1
<b>3. Application summary .....</b>	<b>1</b>
<b>4. Risk assessment.....</b>	<b>1</b>
4.1 Source-pathways and receptors .....	2
4.1.1 Emissions and controls .....	2
4.1.2 Receptors.....	4
4.2 Risk ratings.....	7
<b>5. Consultation .....</b>	<b>10</b>
<b>6. Conclusion .....</b>	<b>10</b>
6.1 Summary of amendments.....	10
<b>References .....</b>	<b>11</b>
<b>Appendix 1: Summary of Licence Holder's comments on risk assessment and draft conditions .....</b>	<b>12</b>
<b>Appendix 2: Application validation summary.....</b>	<b>13</b>
 Table 1: Proposed throughput capacity changes.....	 1
Table 2: Licence Holder controls .....	2
Table 3: Sensitive human and environmental receptors and distance from prescribed activity.	4
Table 4. Risk assessment of potential emissions and discharges from the Premises operation .....	8
Table 5: Consultation .....	10
Table 6: Summary of licence amendments .....	10
 Figure 1: Distance to sensitive receptors.....	 6

## 1. Decision summary

Licence L9376/2023/1 is held by Onslow Infracore Pty Ltd (Licence Holder) for the Ashburton Infrastructure Project– Haul Road (the Premises), located within mining tenements L08/202, L08/205, L08/206, L08/210, L08/211, L08/212, L08/214, L08/215, L08/216, L08/219, L08/231, L08/232, L08/253 and L08/199.

This Amendment Report documents the assessment of potential risks to the environment and public health from proposed changes to the emissions and discharges during the operation of the Premises. As a result of this assessment, Revised Licence L9376/2023/1 has been granted.

## 2. Scope of assessment

### 2.1 Regulatory framework

In completing the assessment documented in this Amendment Report, the department has considered and given due regard to its Regulatory Framework and relevant policy documents which are available at <https://dwer.wa.gov.au/regulatory-documents>.

## 3. Application summary

On 22 May 2024, the Licence Holder submitted an application to the department to amend Licence L9376/2023/1 under section 59 and 59B of the *Environmental Protection Act 1986* (EP Act). The amendment is for include the operation of the Wastewater Treatment Plant (WWTP) at Northwest Coastal Highway (NWCH) Temporary Camp, which was constructed in accordance with Works Approval W6723/2022/1.

This amendment is for the addition of Category 54 activities to the existing Licence to facilitate operation of WWTP and irrigation spray field. No changes to the aspects of the existing Licence relating to Category 12 has been requested by the Licence Holder.

Table 1 below outlines the proposed changes to the existing Licence

**Table 1: Proposed throughput capacity changes**

Category	Current throughput capacity	Proposed throughput capacity	Description of proposed amendment
54	N/A	180 m <sup>3</sup> per day (combined sewage and RO wastewater)	Amendment to include the operation of the WWTP, which was constructed in accordance with W6723/2022/1

## 4. Risk assessment

The department assesses the risks of emissions from prescribed premises and identifies the potential source, pathway and impact to receptors in accordance with the *Guideline: Risk assessments* (DWER 2020).

To establish a Risk Event there must be an emission, a receptor which may be exposed to that emission through an identified actual or likely pathway, and a potential adverse effect to the receptor from exposure to that emission.

## 4.1 Source-pathways and receptors

### 4.1.1 Emissions and controls

The key emissions and associated actual or likely pathway during premises operation which have been considered in this Amendment Report are detailed in Table 2 below. Table 2 also details the proposed control measures the Licence Holder has proposed to assist in controlling these emissions, where necessary.

**Table 2: Licence Holder controls**

Emission	Sources	Potential pathways	Proposed controls
Noise	Operation of wastewater treatment plant	Air/windborne pathway	<ul style="list-style-type: none"> <li>Noise emissions will comply with the <i>Environmental Protection (Noise) Regulations 1997</i>.</li> <li>Operators of the WWTP will be trained in testing and maintenance procedures to ensure the plant is operated in accordance with the manufacturer's specifications.</li> <li>The WWTP unit will be enclosed in order to attenuate noise.</li> <li>An incident reporting system will be maintained to assist in managing environmental incidents such as excessive noise emissions/complaints.</li> </ul>
Odour	Operation of wastewater treatment plant  Incorrect wastewater chemical treatment balance; and Storage of wastewater solids.	Air/windborne pathway	<ul style="list-style-type: none"> <li>Operators of the WWTP will be trained in testing and maintenance procedures to ensure the plant is operated in accordance with the manufacturer's specifications.</li> <li>Wastewater contained within storage tanks.</li> <li>Wastewater is treated prior to irrigation.</li> <li>The irrigation spray field will be fenced, sign posted and includes a spray drift buffer.</li> <li>Regular checks for any odours outside of the WWTP, if odours are noted necessary repairs will be made to the WWTP.</li> <li>Chemicals/reagents will be stored in accordance with Australia Standards.</li> <li>Volume of sludge produced from the treatment process will be monitored on a regular basis and removed as required by a licensed controlled waste contractor. The controlled waste will be disposed to appropriate licensed landfill facility.</li> <li>An incident reporting system will be maintained to assist in managing environmental incidents such as odour complaints.</li> </ul>

Emission	Sources	Potential pathways	Proposed controls
Sewage, partially treated sewage and/or nutrient rich treated effluent	<p>Operation of wastewater treatment plant</p> <p>Infrastructure and equipment failure</p> <p>Maintenance works (accidental spills)</p> <p>Irrigation of treated effluent that does not meet discharge quality criteria.</p> <p>Spills, leaks and/or discharges of untreated sewage, treated effluent not meeting discharge criteria and chemicals.</p>	Seepage to soils and groundwater	<ul style="list-style-type: none"> <li>• Appropriate management of surface water flows within and around the NWCH Camp will be implemented as required to reduce potential for contaminants entering surface water.</li> <li>• Operators of the WWTP will be trained in testing and maintenance procedures to ensure the plant is operated in accordance with the manufacturer's specifications.</li> <li>• The units can be isolated and shut down if required.</li> <li>• Irrigation spray field fenced and sign posted to prevent unauthorised access.</li> <li>• Weekly visual inspection of vegetation for changes such as declining condition, to ensure vegetation health is maintained.</li> <li>• Weekly inspections of wastewater pipeline integrity.</li> <li>• Weekly inspection of irrigation spray field to ensure no visible runoff outside the spray field.</li> <li>• WWTP balance tank will have contingency storage capacity for up to 1 day of normal flow if discharge is suspended while any problems are fixed. Licenced contractor to remove for offsite disposal in event of risk of overflow.</li> <li>• Earthen bunds to be maintained around the WWTP.</li> <li>• Irrigation will not occur during significant rainfall events to prevent potential unauthorised discharges to surface water flows.</li> <li>• Effluent is disposed of to a dedicated irrigation field by an automated system that is managed by a trained operator.</li> </ul>
Solid waste (sludge)	Direct discharge and spills and leaks from storage and disposal	Discharge to land	<ul style="list-style-type: none"> <li>• Volume of sludge produced from the treatment process will be monitored on a regular basis and removed as required by a licensed controlled waste contractor.</li> <li>• The controlled waste will be disposed to appropriate licensed landfill facility.</li> <li>• Store sludge waste from the WWTP in sludge tanks.</li> <li>• An incident reporting system will be implemented and maintained to assist in managing environmental incidents such as the WWTP solid waste emissions.</li> </ul>

Emission	Sources	Potential pathways	Proposed controls
Spills of treatment chemicals	Storage of chemicals /reagents	Seepage to soils and groundwater	<ul style="list-style-type: none"> <li>Safety Data Sheets (SDS) will be available and accessible in areas where hazardous materials are stored and used.</li> <li>Spill kits will be made available at the chemical storage locations and employees trained in their use.</li> <li>Chemicals stored in accordance with relevant guidelines, including but not limited to Australian Standard AS3780-2008 (Storage and Handling of Corrosive Substances) and Australian Standard AS3833-2007 (Storage and Handling of Mixed Classes of Dangerous Goods).</li> <li>In the event of a spill, contaminated soil material will be disposed offsite at a licensed facility.</li> <li>Regular inspections of chemical/reagent storage area.</li> <li>Spill kits will be checked on a regular basis and maintained in good order.</li> </ul>

#### 4.1.2 Receptors

In accordance with the *Guideline: Risk assessments* (DWER 2020), the Delegated Officer has excluded employees, visitors and contractors of the Licence Holder's from its assessment. Protection of these parties often involves different exposure risks and prevention strategies, and is provided for under other state legislation.

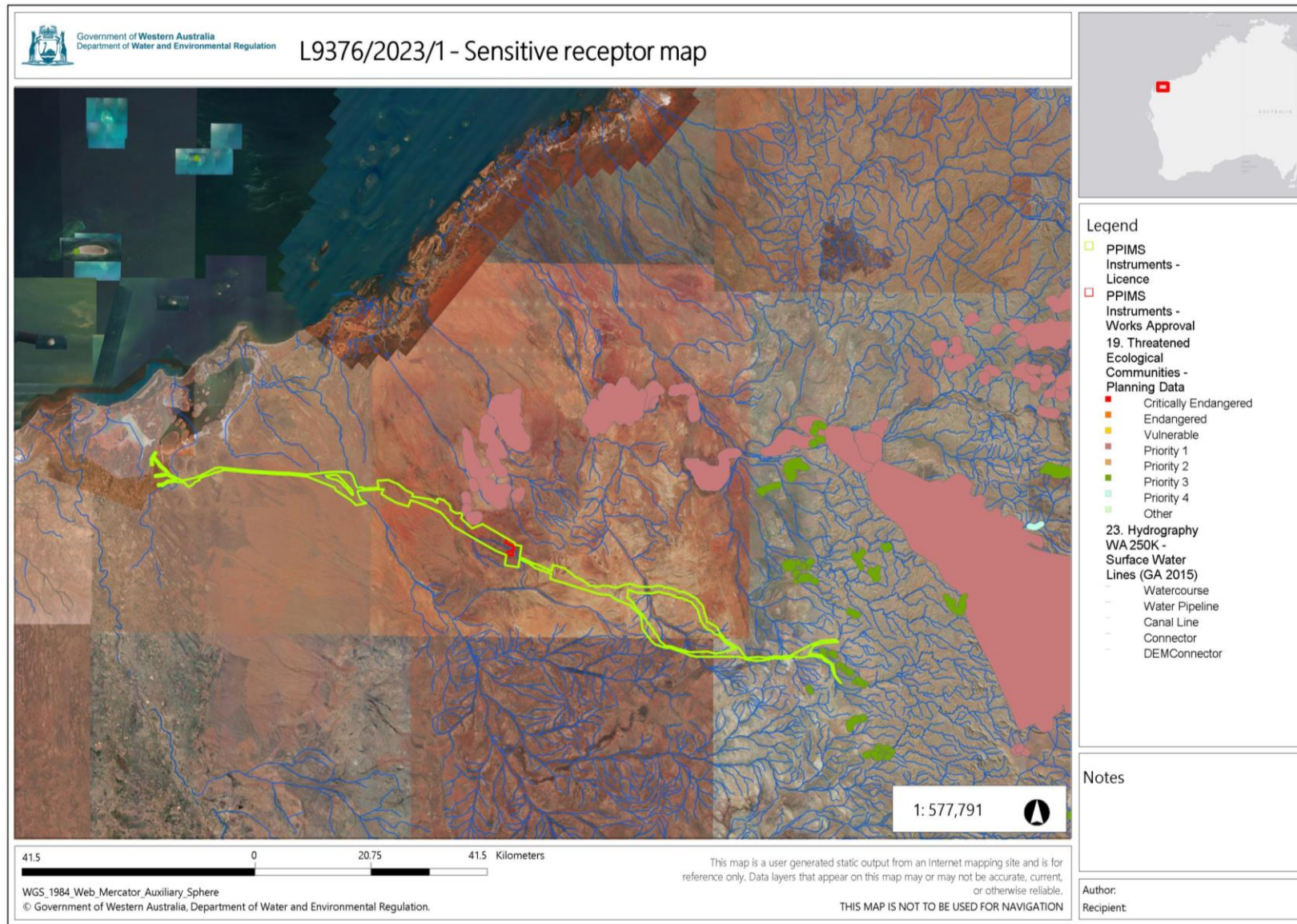
Table 3 below provides a summary of potential human and environmental receptors that may be impacted as a result of activities upon or emission and discharges from the prescribed premises (*Guideline: Environmental siting* (DWER 2020)).

**Table 3: Sensitive human and environmental receptors and distance from prescribed activity**

Human receptors	Distance from prescribed activity
Peedamulla Station – Jundaru Corporation	Approximately 5 km northwest of the WWTP boundary
Ex-Peedamulla Lease Exclusion Area (Archaeological & Ethnographic)	Approximately 154 m east of the proposed WWTP Boundary
Environmental receptors	Distance from prescribed activity
<i>Rights in Water and Irrigation Act 1914</i> -Surface water Areas and irrigation districts	Premises located within proclaimed Pilbara surface water area
<i>Rights in Water and Irrigation Act 1914</i> – Groundwater Areas	Premises located within proclaimed Pilbara groundwater area

Groundwater	Depth to groundwater is approximately 20 to 25 m below ground level (mbgl).
Minor surface water line	Intersect, or are within close proximity to WWTP operating areas.
Priority Ecological community	Priority 1 – approximately 130 m north of the licence prescribed premises boundary
Threatened species and communities	58 Threatened species and communities were identified in the area. These are managed under the EPBC Act: EPBC2021/9064





**Figure 1: Distance to sensitive receptors**

Licence: L9376/2023/1 (2 October 2024)

IR-T15 Amendment report template v3.0 (May 2021)



## 4.2 Risk ratings

Risk ratings have been assessed in accordance with the *Guideline: Risk Assessments* (DWER 2020) for those emission sources which are proposed to change and takes into account potential source-pathway and receptor linkages as identified in Section 4.1. Where linkages are incomplete they have not been considered further in the risk assessment.

Where the Licence Holder has proposed mitigation measures/controls (as detailed in Section 4.1), these have been considered when determining the final risk rating. Where the Delegated Officer considers the Licence Holder's proposed controls to be critical to maintaining an acceptable level of risk, these will be incorporated into the licence as regulatory controls.

Additional regulatory controls may be imposed where the Licence Holder's controls are not deemed sufficient. Where this is the case the need for additional controls will be documented and justified in Table 4.

The Revised Licence L9376/2023/1 that accompanies this Amendment Report authorises emissions associated with the operation of the Premises.

The conditions in the Revised Licence have been determined in accordance with *Guidance Statement: Setting Conditions* (DER 2015).

**Table 4. Risk assessment of potential emissions and discharges from the Premises operation**

Risk Event					Risk rating <sup>1</sup> C = consequence L = likelihood	Licence Holder's controls sufficient?	Conditions <sup>2</sup> of licence	Justification for additional regulatory controls
Source/Activities	Potential emission	Potential pathways and impact	Receptors	Licence Holder's controls				
Operation								
Operation of wastewater treatment plant	Noise	Air/windborne pathway causing impacts to health and amenity	Accommodation village residents Native fauna	Refer to Section 5.1	C = Minor L= Rare <b>Low Risk</b>	Y	N/A	N/A
Operation of wastewater treatment plant  Incorrect wastewater chemical treatment balance; and Storage of wastewater solids.	Odour		Accommodation village residents	Refer to Section 5.1	C = Minor L = Unlikely <b>Low Risk</b>	Y	Condition 1, 2, 3 and 11	N/A
Operation of wastewater treatment plant  Infrastructure and equipment failure  Maintenance works (accidental spills)  Irrigation of treated effluent that does not meet discharge quality criteria.  Spills, leaks and/or discharges of untreated sewage, treated effluent not meeting discharge criteria, sludge and chemicals.	Sewage, partially treated sewage and/or nutrient rich treated effluent	Direct impact to soil; nutrient soil imbalance causing ecosystem disturbance and/or surface water quality  Seepage to soil and groundwater causing contamination and impacting water quality	Remnant native vegetation  Premises located within proclaimed Pilbara surface water area & groundwater area  Minor surface water lines intersect, or are within close proximity  Priority / Threatened species and communities located throughout and surrounding the proposed Premises	Refer to Section 5.1	C = Moderate L = Unlikely <b>Medium Risk</b>	Y	Condition 1, 2, 3, 4, 5, 6, 9,11, 12 and 14	The irrigation spray field is appropriately sized to manage the irrigation of the treated wastewater and RO reject water. The Delegated Officer considers that the infrastructure and applicant's proposed controls are likely to be sufficient to

Risk Event					Risk rating <sup>1</sup> C = consequence L = likelihood	Licence Holder's controls sufficient?	Conditions <sup>2</sup> of licence	Justification for additional regulatory controls
Source/Activities	Potential emission	Potential pathways and impact	Receptors	Licence Holder's controls				
Storage of chemicals /reagents	Spills of treatment chemicals		Remnant native vegetation	Refer to Section 5.1	C = Moderate L = Unlikely <b>Medium Risk</b>	Y	Condition 1, 4 and 12	mitigate spills of untreated, partially treated and treated wastewater, treatment chemicals or contaminated stormwater and seepage of treated wastewater during operations.
Discharge of treated wastewater onto the irrigation field	Treated wastewater	Flooding/pooling /overland runoff potentially causing ecosystem disturbance or impacting surface water quality  Seepage through soil and to groundwater causing contamination and impacting water quality	Premises located within proclaimed Pilbara surface water area & groundwater area  Minor surface water lines intersect, or are within close proximity  Priority / Threatened species and communities located throughout and surrounding the proposed Premises	Refer to Section 5.1	C = Minor L = Possible <b>Medium Risk</b>	Y	Condition 1, 3, 6, 7, 9, 10, 12 and 14	

Note 1: Consequence ratings, likelihood ratings and risk descriptions are detailed in the *Guideline: Risk assessments* (DWER 2020).

Note 2: Proposed Licence Holder's controls are depicted by standard text. **Bold and underline text** depicts additional regulatory controls imposed by department.

## 5. Consultation

Table 5 provides a summary of the consultation undertaken by the department.

**Table 5: Consultation**

Consultation method	Comments received	Department response
Local Government Authority (Shire of Ashburton) advised of proposal 17 July 2024	None received	N/A
Licence Holder was provided with draft amendment on 05 September 2024	Refer to appendix 1	Refer to appendix 1

## 6. Conclusion

Based on the assessment in this Amendment Report, the Delegated Officer has determined that a Revised Licence will be granted, subject to conditions commensurate with the determined controls and necessary for administration and reporting requirements.

### 6.1 Summary of amendments

Table 6 provides a summary of the proposed amendments and will act as record of implemented changes. All proposed changes have been incorporated into the Revised Licence as part of the amendment process.

**Table 6: Summary of licence amendments**

Revised licence condition	Existing condition	Conversion notes
Cover page	Cover page	Added category 54 into the licence.
Licence history	Licence history	Updated
Condition 1, Table 1	Condition 1, Table 1	All infrastructure and equipment that were constructed under Work Approval W6723/2023/1 was included in the licence.
Condition 2, Table 2	N/A	New standard waste acceptance condition was added to the licence to ensure the category 54 waste acceptance specifications.
Condition 3, Table 3	N/A	New standard waste processing condition was added to the licence to ensure the category 54 waste processing specifications.
Condition 4	N/A	New standard conditions for discharge and emissions were added into the licence.
Condition 5	N/A	

Revised licence condition	Existing condition	Conversion notes
Condition 6, Table 4	N/A	New standard condition was added to the licence to ensure the authorised discharge point.
Condition 7, Table 5	N/A	New standard condition was added to the licence to ensure the treated wastewater discharge limits.
Condition 8, Table 6	Condition 2, Table 2	New numbering.
Condition 9, Table 7	N/A	New standard waste monitoring condition was added to the licence to ensure requirement for category 54 waste input and output monitoring.
Condition 10, Table 8	N/A	New standard emissions and discharge monitoring condition was added to the licence.
Condition 11	N/A	New standard condition was added to the licence to ensure the sampling and testing requirements for treated effluent.
Condition 12	Condition 3	New numbering.
Condition 13	Condition 4	New numbering.
Condition 14, Table 9	N/A	New standard condition was added to the licence for Annual Environmental report requirement.
Condition 15	Condition 5	New numbering.
Condition 16	Condition 6	New numbering.
Definition: Table 10	Definition: Table 3	Added definitions for 'Australian standards', 'blended effluent', 'ha', 'kL', 'm <sup>3</sup> ', 'mg/L', 'mL', 'NATA', 'NATA accreditation', 'RO', 'spot sample' and 'WWTP'.
Schedule 1: Maps	Schedule 1: Maps	Added figure 7, 9 and 10 to the licence to reflect location and arrangement of WWTP and irrigation spray field.

## References

1. Department of Environment Regulation (DER) 2015, *Guidance Statement: Setting Conditions*, Perth, Western Australia.
2. Department of Water and Environmental Regulation (DWER) 2020, *Guideline: Environmental Siting*, Perth, Western Australia.
3. DWER 2020, *Guideline: Risk Assessments*, Perth, Western Australia.

## Appendix 1: Summary of Licence Holder's comments on risk assessment and draft conditions

Condition	Summary of Licence Holder's comment	Department's response
Condition 1, Table 1	The licence holder requested to move expected treated effluent target concentrations from condition 7, Table 5 to condition 1, Table 1.	The condition has been amended as request.
Condition 2	The licence holder requested to confirm if this is the most appropriate condition and stated that sewage waste isn't accepted on the premises from other premises; rather, it is being generated on the premises, and the WWTP will be treating the sewage waste generated onsite.	The delegated officer acknowledges the error in the wording and has updated to wording accordingly. The waste acceptance condition is a standard condition so remains on the licence.
Condition 3, Table 3	The licence holder requested to remove the size of the irrigation spray field. The minimum required area is 2.4 ha based on the expected nutrient loading rates. The licence holder stated that the spray field is larger than 2.4 ha.	The delegated officer has updated the wording to say 'a minimum 2.4ha irrigation area'. This allows for the irrigation area to be greater than 2.4ha.
Condition 7, Table 5	The licence holder requested to include annual nutrient application rates for irrigation emission limits and move each parameter of treated effluent target concentration into Table 1 with the exception of TDS.	The condition has been amended as request.
Condition 9, Table 7	The licence holder requested to remove the requirement to record volume of sludge removed within the licence. They stated they will be managed the sludge in accordance with internal waste management procedures and Environmental Protection (Controlled Waste) Regulations 2004.	The condition has been amended as request.
Condition 10, Table 8	The licence holder requested to update monthly monitoring frequency to quarterly monitoring as this maintains consistency with WWTP monitoring conditions on another licence held by the Applicant.	The condition has been amended as request.
Condition 14, Table 9	The licence holder was requested to update following in Table 9; a) delete 'treated' and replace with blended (c) delete 'monthly' and replace with quarterly (c) delete 'each' irrigation area as there is only 1 irrigation area.	The condition has been amended as request.
Schedule 1, Table 7	The licence holder provided an updated premises map and requested to replace the previous map.	The figure has been updated as request.
Licence amendment report	The licence holder requested to correct typographical error in Section 6.1, Table 6: Summary of Licence Amendments.	The amendment report has updated to amend typographical errors.



## Appendix 2: Application validation summary

SECTION 1: APPLICATION SUMMARY					
<b>Application type</b>					
Amendment to licence	<input checked="" type="checkbox"/>	Current licence number:	L9376/2023/1		
		Relevant works approval number:	W6723/2022/1	N/A	<input type="checkbox"/>
Date application received		22 May 2024			
<b>Applicant and Premises details</b>					
Applicant name/s (full legal name/s)		Onslow Infracore Pty Ltd			
Premises name		North West Coastal Highway Temporary Camp			
Premises location		Miscellaneous Licences L08/205, L08/215 and, L08/216 Pastoral Lease 3114/905  Street address - PEEDAMULLA, WA 6710			
Local Government Authority		Shire of Ashburton			
<b>Application documents</b>					
HPCM file reference number:		DER2023/000047			
Key application documents (additional to application form):		Licence cover letter Licence supporting document Compiled attachments			
<b>Scope of application/assessment</b>					
Summary of proposed activities or changes to existing operations.		An application for a licence amendment to include the operation of the WWTP, which was constructed under W6723/2022/1.			
Category number/s (activities that cause the premises to become prescribed premises)					
Table 1: Prescribed premises categories					
<b>Prescribed premises category and description</b>		<b>Assessed production or design capacity</b>		<b>Proposed changes to the production or design capacity</b>	
Category 12: Screening, etc. of material		4.5 million tonnes per annum		No change	
Category 54: Sewage facility: premises (a) on which sewage is treated (excluding septic tanks); or (b) from which treated sewage is discharged onto land or into waters.		N/A		180 m <sup>3</sup> per day (100m <sup>3</sup> per day treated effluent and 80 m <sup>3</sup> per day RO reject)	
<b>Legislative context and other approvals</b>					
Has the applicant referred, or do they intend to refer, their proposal to the EPA under Part IV of the EP Act as a significant proposal?		Yes <input type="checkbox"/> No <input checked="" type="checkbox"/>		Referral decision No: N/A Managed under Part V <input type="checkbox"/> Assessed under Part IV <input type="checkbox"/>	

Does the applicant hold any existing Part IV Ministerial Statements relevant to the application?	Yes <input checked="" type="checkbox"/> No <input type="checkbox"/>	Ministerial statement No: MS 1204 EPA Report No:
Has the proposal been referred and/or assessed under the EPBC Act?	Yes <input checked="" type="checkbox"/> No <input type="checkbox"/>	Reference No: EPBC 2021/9064 (However, the NWCH Camp was excised from the Development Envelope. Section 156A Request to Vary a Proposal to take Action under the EPBC Act was submitted to DCCEEW on 16 June 2022 to excise the NWCH Camp area from the Development Envelope within the EPBC referral. The Variation was accepted by the DCCEEW in August 2022 ). Biodiversity surveys Submission number(s) IBSASUB-20211116-7ED1E83C IBSASUB-20211116-FA3CF966 IBSA number(s) IBSA-2021-0460 IBSA-2021-0461
Has the applicant demonstrated occupancy (proof of occupier status)?	Yes <input checked="" type="checkbox"/> No <input type="checkbox"/>	Certificate of title <input type="checkbox"/> General lease <input type="checkbox"/> Expiry: Mining lease / tenement <input checked="" type="checkbox"/> Expiry:25/03/2042
Has the applicant obtained all relevant planning approvals?	Yes <input checked="" type="checkbox"/> No <input type="checkbox"/> N/A <input type="checkbox"/>	Approval: DoH approval granted in May 2023. Expiry date:
Has the applicant applied for, or have an existing EP Act clearing permit in relation to this proposal?	Yes <input type="checkbox"/> No <input checked="" type="checkbox"/>	CPS No: N/A Exemption under Environmental Protection (clearing of native vegetation) Regulations 2004 – Regulation 5, Item 20
Has the applicant applied for, or have an existing CAWS Act clearing licence in relation to this proposal?	Yes <input type="checkbox"/> No <input checked="" type="checkbox"/>	Application reference No: N/A Licence/permit No: N/A No clearing is proposed.
Has the applicant applied for, or have an existing RIWI Act licence or permit in relation to this proposal?	Yes <input checked="" type="checkbox"/> No <input type="checkbox"/>	Licence/permit No: GWL208466(1)
Does the proposal involve a discharge of waste into a designated area (as defined in section 57 of the EP Act)?	Yes <input checked="" type="checkbox"/> No <input type="checkbox"/>	Name: Pilbara surface water area and Pilbara groundwater area Type: Proclaimed Groundwater Area and Surface Water Area Has Regulatory Services (Water) been consulted? Yes <input type="checkbox"/> No <input checked="" type="checkbox"/> N/A <input type="checkbox"/>

		Regional office: North West	
Is the Premises situated in a Public Drinking Water Source Area (PDWSA)?	Yes <input type="checkbox"/> No <input checked="" type="checkbox"/>	Name: N/A Priority: N/A Are the proposed activities/ landuse compatible with the PDWSA (refer to <a href="#">WQPN 25</a> )? Yes <input type="checkbox"/> No <input type="checkbox"/> N/A <input checked="" type="checkbox"/>	
Is the Premises subject to any other Acts or subsidiary regulations (e.g. <i>Dangerous Goods Safety Act 2004</i> , <i>Environmental Protection (Controlled Waste) Regulations 2004</i> , <i>State Agreement Act xxxx</i> )	Yes <input checked="" type="checkbox"/> No <input type="checkbox"/>	<i>Environment Protection and Biodiversity Conservation Act 1999</i> <i>Rights in Water and Irrigation Act 1914</i>	
Is the Premises within an Environmental Protection Policy (EPP) Area?	Yes <input type="checkbox"/> No <input checked="" type="checkbox"/>	N/A	
Is the Premises subject to any EPP requirements?	Yes <input type="checkbox"/> No <input checked="" type="checkbox"/>	N/A	
Is the Premises a known or suspected contaminated site under the <i>Contaminated Sites Act 2003</i> ?	Yes <input type="checkbox"/> No <input checked="" type="checkbox"/>	Classification: N/A Date of classification: N/A	