

**Vida Wood Australia Pty Ltd**

**Submission for**

**Works Approval to Operate a  
Timber Treatment Spray Unit**

**February 2026**

# CONTENTS

- 1. Introduction**
  - 1.1 Background
  - 1.2 Spray Unit Description
  - 1.3 Spray Unit Operation
  
- 2. Waste Generation and Handling**
  - 2.1 Waste Minimisation Strategies
  - 2.2 Liquid Waste
  - 2.3 Solid Waste
  - 2.4 Waste Disposal
  - 2.5 Vapours
  
- 3. Environmental Management Program**
  - 3.1 General
  - 3.2 Installation Design
  - 3.3 Maintenance Schedule
  - 3.4 Emergency Response Procedures
  
- 4. Storage of Dangerous Goods**
  
- 5. Hazard and Risk Assessment**
  
- 6. Traffic & Transport**
  
- 7. Appendices**
  - 7.1 Safety Data Sheets
  - 7.2 The Performance of Tanalith Ti (Imidacloprid) in Wood Preservation
  - 7.3 Environmental Fate of Imidacloprid
  - 7.4 Tanalith Ti (Imidacloprid) APVMA approved label
  - 7.5 General Schematic of the Proposed Spray Unit
  - 7.6 Fire Sprinkler System, Hydrant Ring Locations, Hose Reel & Extinguisher locations and Service Reports
  - 7.7 Waste Disposal Contractor and DWER Licences and Waste Acceptance Statement
  - 7.8 Photos – Auto Pack Stacker, Pack Outfeed Deck and Auto Pack Stacker and Outfeed Deck Combined
  - 7.9 Site Orientation Photos Plus Drawing Outlining Location of Spray Unit, Concentrate Storage, Designated Truck Load/Unload Area and Warehouse Access.

# 1. INTRODUCTION

## 1.1 Background

Vida Wood Australia plan to operate a timber import, wholesale and distribution business from the premises located at 18 Wellard Street, Bibra Lake WA 6163. The operation will sub-lease 3,000m<sup>2</sup> of warehouse space in the South-West corner of the larger warehouse located closest to Wellard Street.

In 2002 European House Borers were discovered in a property at Mahogany Creek east of Perth and subsequently in pine plantations in adjacent areas and further afield in plantations on the Perth region coastal plain. European House Borer is a destructive pest that targets softwood and is on the Federal Department of Agriculture noxious pests list. The WA Department of Agriculture set up zones around metropolitan Perth to limit the movement of untreated softwood and has advertised and educated local communities and industry of the dangers of not containing this pest. This has led to an increased demand from the WA housing market for suitably treated timber products. The timber will be treated utilising a spray unit to Australian Standards AS1604.1-2021 Hazard Level H2F, being a 2 mm envelope treatment.

The proposal is to treat timber with a preservative known as Tanalith Ti (Imidacloprid), a waterborne solution of Imidacloprid (IM30) at 9.0 % v/v with the addition of a blue pigment pack at 1.5% v/v. The treated timber will be identified by its blue colour, in-line with industry practice for H2F treated product. The retention as required by AS 1604.1-2021 for structural timber treated to H2F with Tanalith Ti (Imidacloprid) is 0.0078%<sub>m/m</sub>.

Vida Wood Australia proposes to purchase and install a purpose-built timber spray unit and associated infeed/outfeed materials handling equipment for this purpose.

The spray unit will be installed in the South-West corner of the larger warehouse closest to Wellard Street. The Tanalith Ti (Imidacloprid) and Blue 250 Pigment pack concentrates will be stored in this same area. The designated truck load/unload area will be on the Western side of this same warehouse with shed access through the door located 26 metres from the South-West corner (see appendix 7.9 for photos and layout drawing indicating these orientations).

## 1.2 Spray Unit Description

The unit consists of a linear spray system with curtains at both ends and an internal exhaust system that produces a negative pressure in the unit to prevent overspray. The unit itself is approximately 1,000mm square with a spray ring containing 8 nozzles and has a 250-litre work tank situated below the spray unit for the diluted insecticide. See layout drawing attached in Appendix 7.5.

The timber packs are reduced to single piece via a semi-automated powered infeed that feeds the timber through the spray unit. The outfeed has an automatic pack

stacking system. Both the infeed and out feed are controlled by a PLC system. The spray box has built in air knives designed to blow surface moisture from the timber after it has passed through the spray ring, this in turn reduces the potential of drip from the freshly treated timber. The outfeed system also has an in-built tray system for catching drip from the freshly treated timber after exiting the spray unit. This tray drains directly back into the work tank on the spray unit for solution to be reused.

The concentrate is supplied in 1,000 litre IBC's and is diluted to 9% v/v via a 450-litre mix tank. The mix tank feeds the abovementioned 250 litre work tank on the spray unit. The entire infeed/outfeed and spray unit will be housed in a concrete bund area capable of containing well in excess of 120% of the diluted solution stored in the mix and work tank. Additionally, the IBC's containing the preservative concentrate and pigment pack will be stored on IBC containment bunds for safe storage and use.

The timber will vary in dimension from a minimum of 70 x 35mm to a maximum 140 x 45mm with various lengths of ranging from 2.4 metres up to a maximum length of 6.0 metres. The forecast is for the spray unit to treat approximately 82.0 m<sup>3</sup> per day.

An automated dosing system will deliver Tanalith Ti concentrate and blue pigment from IBC concentrates to the mix tank to ensure correct solution strengths and levels are maintained. Preservative usage is to be monitored and reconciled at least weekly to ensure compliance to Australian Standard requirements.





### 1.3 Spray Unit Operation

Timber packs are delivered to the infeed side of the dip system by forklift. The packs are broken down onto the deck that delivers individual pieces to the automated conveyer belt that feeds the timber through the spray booth. The timber is collected by another conveyer system after passing through the spray unit, this conveyer system has an inbuilt drip tray system that returns any excess drip back to the work tank. Once the timber passes through the spray booth it is sorted into rows and stacked back into packs by the PLC controlled automated pack stacker. By the time a pack is built it is effectively touch dry, it then gets secured by straps, so it is safe to re-locate to the designated undercover sealed storage area adjacent to the spray unit for further processing i.e. plastic wrap, labelling etc. The timber will be held in this area until the preservative is fixed to the wood surface, only then is it moved to the dispatch area.

Hours of operation will be:

- Monday to Friday – 6:00am to 4:00pm
- Saturday - 6:00am to 12:00pm
- Sunday - Closed

## 2. WASTE GENERATION AND HANDLING

### 2.1 Waste Minimisation Strategies

The timber spray unit is essentially a 'zero discharge' process from the time the timber preservatives are delivered to site and consumed in the spray unit process. Timber is delivered to the spray unit free of sawdust and other loose material. Timber is not removed from the spray unit area until it is drip free. The treated timber is not released from the designated undercover storage area until the surface is dry and ready for storage/dispatch.

Several waste minimisation techniques are used to reduce the potential of any waste being generated. Some of these are listed below.

#### Physical Measures

- Internal sealed concrete floor removes the possibility of soil and groundwater contamination; this includes sealant to all concrete joints in this area.
- Separate Bund containment for IBC's containing the Tanalith Ti concentrate and Blue Pigment Colour Pack.
- The spray unit has built in air knives behind the spray ring to help reduce excess solution from the surface of the timber prior to it leaving the spray unit.
- The outfeed conveyer has built in tray to catch and return drip from freshly treated timber to spray unit work tank for reuse.
- Roofed warehouse eliminates the ingress of stormwater into the spray unit operation and the potential for contaminated storm water discharge.

#### Good Work Practices

- Periodic planned preventative maintenance on all equipment.
- Control of uptake on the treated timber, targeted uptake is 5 L/m<sup>3</sup>, checked weekly as part of QC programme to ensure compliance with relevant standards.
- Management of the transfer of insecticide from IBCs to spray unit via automated PLC dosing equipment to maintain consistent level/work solution strength.
- Presentation of clean timber to the spray unit to minimise contaminated waste.
- Any waste will be placed in a lined drum for disposal through a licenced waste disposal operator, this is limited to sawdust/dust collected in the strainer system of the spray unit.

### 2.2 Liquid Waste

Any liquid recovered is returned to the spray unit work tank for reuse ie. solution/drip from freshly treated timber.

### **2.3 Solid Waste**

The timber will be presented to the spray unit in its final shape and form, prior to treatment. Consequently, all timber passing through the spray unit will have been re-sawn or docked to length prior to being treated. The only possible source of waste is dust, sawdust, splinters and shavings adhering to this timber. As most timber arriving on site is in its final form, it is considered waste from these sources will be very low and any that did occur would accumulate in the gravity feed strainer system between the spray unit and the work tank. This waste would be removed from the strainer system as required. The contaminated material would be placed in lined 200 litre drums for disposal via an approved waste disposal licenced operator. It is estimated the site will produce approximately six by 200 litre drums of waste per annum. Sawdust used to absorb minor spills can be disposed of in the same way.

### **2.4 Waste Disposal**

Any contaminated waste as described in section 2.3 ie. contaminated dust, sawdust, splinters and shavings will be disposed of via a registered regulated waste disposal company. Vida will utilise the services Veolia to handle their waste disposal requirements, attached in appendix 7.7 are their Waste Facility Licence (Western Resource Recovery – DWER licence number L7639/2000/8), Controlled Waste Carrier Licence (Licensee Veolia Environmental Services (Australia) P/L – DWER licence number T00019) and a Waste Acceptance statement from Western Resource Recovery. Veolia Environmental Services are experienced with handling and disposal of the type of wastes described in section 2.3 of this document.

Wastes will not be allowed to accumulate over an extended period and will be disposed of on an annual basis.

### **2.5 Vapours**

The actives in Tanalith Ti (Imidacloprid) are non-volatile (see Appendices 7.1 SDS for Tanalith Ti (Imidacloprid)).

The colour pigment pack is non-volatile (see Appendices 7.1.1 SDS for Colour pack).

## 3. ENVIRONMENTAL MANAGEMENT PROGRAM

### 3.1 General

The design of the spray unit incorporates a combination of automatic and manual controls and checks. Therefore, safe operation will depend on both adequate maintenance to ensure that switches, valves etc are well maintained and training in the use and operation of the spray unit is undertaken to minimise human error.

Tanalith Ti (Imidacloprid) is classified as DG class 9 for transport, packaging good class III, Hazchem code 3Z. The storage and handling of the material will be subject to suppliers' instructions and to the provisions of the Australian Dangerous Goods Code (see SDS Appendices 7.1).

The uptake (litres/m<sup>3</sup>) of the Imidacloprid dilute solution will vary according to species, dimension and condition of timber and application technique including the speed of conveyer system. As a guide, the timber is expected to consume approximately 5 litres/m<sup>3</sup> of 9.0 % v/v dilute solution of Tanalith Ti (Imidacloprid). This equates to approximately 0.45 litres of Tanalith Ti (Imidacloprid) concentrate per cubic meter of treated wood.

Tanalith Ti (Imidacloprid) concentrate will be stored in approved DG containers from the supplier and once delivered to site, placed/stored directly on IBC containment bunds within the designated treatment area.

The spray unit work tank (250 litre capacity) and mix tank (450 litre capacity) containing the diluted preservative (9.0% v/v) are situated inside the bund of the spray unit. The sealed bund around the spray unit will have a capacity to contain 200% plus of the maximum total volume of both the work tank and mix tank of the spray unit.

The conveyer on the out-feed side of the spray unit has a built-in tray system, which collects any drip from the treated timber and returns it to the work tank on the spray unit for reuse.

### 3.2 Installation Design

The spray unit is designed as a relatively compact unit, it will be assembled and tested at the manufacturers site in Melbourne prior to shipment to the Wellard Street, Bibra Lakes site. The entire spray unit and associated materials handling will cover a floor area of just 130 m<sup>2</sup>. Installation and commissioning will be carried out by MPB Engineering, Melbourne (manufacturer) staff over a period of approximately 5 days. It will be a simple and easy installation (bolt together equipment), which ensures minimal possible adverse environmental impact from installation, commissioning and continued normal operation.

It is proposed that the maximum forecast volume of timber to be treated would be approximately 18,000m<sup>3</sup> per annum, based on 220 working days per year this equates to 82m<sup>3</sup> per day.

The site for the operation of the proposed spray unit is 18 Wellard Street, Bibra Lake WA. This address has two warehouses located on this site, the larger warehouse located closest to Wellard Street will house the spray unit. To understand the scope of the project, this warehouse has a floor area of 16,607m<sup>2</sup>. The area required to house the spray unit, dosing system/mix tank, IBC concentrates and to accommodate for the flow of timber out of the outfeed from the spray unit to the point of wrapping for the targeted forecast of 82m<sup>3</sup> per day volume is approximately 454.0 m<sup>2</sup>, this can be broken down as the spray unit 130m<sup>2</sup>, concentrate storage 24 m<sup>2</sup> and timber handling, plastic wrap etc 300m<sup>2</sup>). This equates to just 2.7% of the entire warehouse area.

The proposed area to be utilised for the spray unit operation in the warehouse is shown in appendix 7.5 of this document.

### **3.3 Maintenance Schedule**

Planned maintenance of the spray unit and materials handling equipment is critical to the safe operation of the system and will form part of the spray unit operator's daily responsibilities. An independent external contractor will be employed for more technical maintenance of pumps, valves, instrumentation, piping and hydraulic. The spray unit will be routinely cleaned and tested for operational performance at least monthly.

### **3.4 Emergency Response Procedures**

- In the event of an unlikely spill, where possible, pump or collect liquid for re-use or recycling. Use absorbent (soil, sand or other inert material) to collect remainder. Collect and seal in properly labelled containers or drums for disposal. See SDS Appendices 7.1 for further instructions.
- Training in the appropriate clean-up procedures will be provided by Vida Wood Australia and Arxada Australia. All personnel who regularly enter the area including operators, forklift drivers and managers responsible for the area shall undergo an induction course, which includes instruction on all operational aspects of the spray unit, normal safety procedures and standard procedures in the event of abnormal incident.
- Spill procedures will be developed in consultation with Arxada Australia and relevant emergency services.

## 4. STORAGE OF DANGEROUS GOODS

The timber preservative to be used is Tanalith Ti with the active Imidacloprid, which has been assessed and approved for use by the APVMA (approval No 65525/51121). Imidacloprid has a Hazchem code ·3Z, is DG class 9, Poisons schedule-NA and Packaging group III. Details of the product, dilute aqueous solution used in the treatment process is included in the appendices of this document.

Total maximum storage of the products will be as follows:

Product	UN Number	Hazchem Code	Quantity (litres)
Tanalith Ti (Imidacloprid)	3082	·3Z	2000
Blue 250 Pigment Pack	N/A	N/A	2000

In addition to the abovementioned 4,000 litres of concentrates, a maximum of 700 litres of diluted Tanalith Ti/Blue 250 pigment will be stored across the spray unit work tank and mix tank.

The bund capacity for all fluids (concentrates and diluted solution) stored on site will be in excess of 200%.

## 5. HAZARD AND RISK ASSESSMENT

Normal operation of the spray unit should result in zero discharge to the environment. Details of which are described in section 2.

Incidental contamination resulting from timber stock movements outside the undercover work area should not occur with strict adherence to procedures. Treated packs should not be stored outside unless they are wrapped with plastic protection.

The use of Tanalith Ti (Imidacloprid) as a wood preservative is covered in the Product Label registered with the APVMA. See appendices of this document.

### Fire Prevention:

Both warehouses located at 18 Wellard Street are fitted with internal fire protection sprinkler systems. These systems are regularly serviced and maintained by Reliabale Fire Services. Further to this, there are hose reels & fire extinguisher located throughout the warehouses and an external fire hydrant ring around both the warehouses on site for access by emergency services if required.

The activities intended for the site of warehousing timber and spraying with an insecticide/termiticide represent minimal risk of fire.

See appendix 7.6 for layout drawings of both the sprinkler system, hose reel and fire extinguisher locations, hydrant ring locations and also recent service reports.

## 6. TRAFFIC & TRANSPORT

Safe transport and handling prior to delivery will be the responsibility of the supplying company Arxada Australia and the driver of the DG approved vehicle. The Australian Dangerous Goods Code provides a basis for safe transport and loading/unloading for a wide range of goods. Preservative deliveries will not exceed one delivery per month.

Concentrate deliveries to site will be in DG approved IBC's and placed directly on to the IBC containment bunds.

## Appendices 7.1

### Safety Data Sheets

- Tanalith Ti Concentrate
- Tanalith Ti Dilute (Spray Unit)
- Tanalith Ti Treated Timber
- Blue 250 Water Pigment Pack

# Safety Data Sheet

# arxada

Hazardous, Dangerous Goods

## 1. MATERIAL AND SUPPLY COMPANY IDENTIFICATION

Product name: **TANALITH TI INSECTICIDE**

Recommended use: Wood Preservative

Supplier: Arch Wood Protection (Aust) Pty Limited

ABN: 95 003 780 872

Street Address: Station Street  
Trentham, VIC, 3458  
Australia.

Telephone: +613 5424-1350

Emergency Telephone number: 1800 7WOOD7

## 2. HAZARDS IDENTIFICATION

This material is hazardous according to the criteria of Safe Work Australia GHS 7.



### Signal Word

Warning

### Hazard Classifications

Sensitisation - Skin - Category 1

Acute Hazard to the Aquatic Environment - Category 1

Chronic Hazard to the Aquatic Environment - Category 1

### Hazard Statements

H317 May cause an allergic skin reaction.

H410 Very toxic to aquatic life with long lasting effects.

### Prevention Precautionary Statements

P102 Keep out of reach of children.

P103 Read carefully and follow all instructions.

P261 Avoid breathing dust, fume, gas, mist, vapours or spray.

P272 Contaminated work clothing should not be allowed out of the workplace.

P273 Avoid release to the environment.

P280 Wear protective gloves/protective clothing including eye/face protection.

### Response Precautionary Statements

P101 If medical advice is needed, have product container or label at hand.

P302+P352 IF ON SKIN: Wash with plenty of water and soap.

P333+P313 If skin irritation or rash occurs: Get medical advice/attention.

P362+P364 Take off contaminated clothing and wash it before reuse

P391 Collect spillage.

### Storage Precautionary Statement

Not allocated

### Disposal Precautionary Statement

Product Name: TANALITH TI INSECTICIDE

Reference No: LWP0030

Issued: 2023-07-11

Version: 2.1

Page 1 of 7

# Safety Data Sheet



P501

Dispose of contents/container in accordance with local, regional, national and international regulations.

**Poison Schedule:** Not Applicable

## DANGEROUS GOOD CLASSIFICATION

Classified as Dangerous Goods by the criteria of the "Australian Code for the Transport of Dangerous Goods by Road & Rail" and the "New Zealand NZS5433: Transport of Dangerous Goods on Land".

**Dangerous Goods Class:** 9

Australian Special Provisions; AU01: Environmentally Hazardous Substances meeting the description of UN 3077 or UN 3082 are not subject to this Code (ADG 07) when transported by road or rail in;

- (a) packagings that do not incorporate a receptacle exceeding 500 Kg (L); or
- (b) IBCs.

## 3. COMPOSITION INFORMATION

CHEMICAL ENTITY	CAS NO	PROPORTION
Imidacloprid	138261-41-3	1 - 5 % (w/w)
1,2-Benzisothiazol-3(2H)-one	2634-33-5	<0.05 % (w/w)
5-chloro-2-methyl-2H-isothiazol-3-one	26172-55-4	<0.005 % (w/w)
Ingredients determined to be Non-Hazardous		Balance
		100%

## 4. FIRST AID MEASURES

If poisoning occurs, contact a doctor or Poisons Information Centre (Phone Australia 131 126, New Zealand 0800 764 766).

**Inhalation:** Remove victim from exposure - avoid becoming a casualty. Remove contaminated clothing and loosen remaining clothing. Allow patient to assume most comfortable position and keep warm. Keep at rest until fully recovered. Seek medical advice if effects persist.

**Skin Contact:** Effects may be delayed. If skin or hair contact occurs, remove contaminated clothing and flush skin and hair with running water. If swelling, redness, blistering or irritation occurs seek medical assistance.

**Eye contact:** If in eyes wash out immediately with water. In all cases of eye contamination it is a sensible precaution to seek medical advice.

**Ingestion:** Rinse mouth with water. If swallowed, do NOT induce vomiting. Give a glass of water to drink. Never give anything by the mouth to an unconscious patient. If vomiting occurs give further water. Seek medical advice.

**PPE for First Aiders:** Wear safety shoes, overalls, gloves, safety glasses. Available information suggests that gloves made from nitrile rubber should be suitable for intermittent contact. However, due to variations in glove construction and local conditions, the user should make a final assessment. Always wash hands before smoking, eating, drinking or using the toilet. Wash contaminated clothing and other protective equipment before storing or re-using.

**Notes to physician:** Treat symptomatically. Effects may be delayed.

## 5. FIRE FIGHTING MEASURES

**Hazchem Code:** +3Z

**Suitable extinguishing media:** If material is involved in a fire use alcohol resistant foam or dry agent (carbon dioxide, dry chemical powder).

**Specific hazards:** Non-combustible material.

**Fire fighting further advice:** Not combustible, however following evaporation of aqueous component residual material can burn if ignited.

## 6. ACCIDENTAL RELEASE MEASURES

### SMALL SPILLS

Wear protective equipment to prevent skin and eye contamination. Avoid inhalation of vapours or dust. Wipe up with absorbent (clean rag or paper towels). Collect and seal in properly labelled containers or drums for disposal.

### LARGE SPILLS

Clear area of all unprotected personnel. Slippery when spilt. Avoid accidents, clean up immediately. Wear protective equipment to prevent skin and eye contamination and the inhalation of vapours. Work up wind or increase ventilation. Contain - prevent run off into drains and waterways. Use absorbent (soil, sand or other inert material). Collect and seal in properly labelled containers or drums for disposal. If contamination of crops, sewers or waterways has occurred advise local emergency services.

**Dangerous Goods - Initial Emergency Response Guide No:** 47

## 7. HANDLING AND STORAGE

**Handling:** Avoid eye contact and skin contact. Avoid inhalation of vapour, mist or aerosols.

**Storage:** Store in a cool, dry, well-ventilated place and out of direct sunlight. Store away from foodstuffs. Store away from incompatible materials described in Section 10. Store away from sources of heat and/or ignition. Keep container standing upright. Keep containers closed when not in use - check regularly for leaks.

This material is classified as a Class 9 Miscellaneous Dangerous Good as per the criteria of the "Australian Code for the Transport of Dangerous Goods by Road & Rail" and/or the "New Zealand NZS5433: Transport of Dangerous Goods on Land" and must be stored in accordance with the relevant regulations.

## 8. EXPOSURE CONTROLS / PERSONAL PROTECTION

**National occupational exposure limits:** No value assigned for this specific material by Safe Work Australia.

**Biological Limit Values:** As per the "National Model Regulations for the Control of Workplace Hazardous Substances (Safe Work Australia)" the ingredients in this material do not have a Biological Limit Allocated.

**Engineering Measures:** Natural ventilation should be adequate under normal use conditions.

**Personal Protection Equipment:** SAFETY SHOES, OVERALLS, GLOVES, SAFETY GLASSES.

Personal protective equipment (PPE) must be suitable for the nature of the work and any hazard associated with the work as identified by the risk assessment conducted.

Wear safety shoes, overalls, gloves, safety glasses. Available information suggests that gloves made from nitrile rubber should be suitable for intermittent contact. However, due to variations in glove construction and local conditions, the user should make a final assessment. Always wash hands before smoking, eating, drinking or

# Safety Data Sheet



using the toilet. Wash contaminated clothing and other protective equipment before storing or re-using.

**Hygiene measures:** Keep away from food, drink and animal feeding stuffs. When using do not eat, drink or smoke. Wash hands prior to eating, drinking or smoking. Avoid contact with clothing. Avoid eye contact and skin contact. Avoid inhalation of vapour, mist or aerosols. Ensure that eyewash stations and safety showers are close to the workstation location.

## 9. PHYSICAL AND CHEMICAL PROPERTIES

<b>Form:</b>	Liquid
<b>Colour:</b>	White
<b>Odour:</b>	N Av
<b>Solubility:</b>	N Av
<b>Specific Gravity:</b>	1.002 - 1.0022 @ 20°C
<b>Relative Vapour Density (air=1):</b>	>1
<b>Vapour Pressure:</b>	N Av
<b>Flash Point (°C):</b>	N App
<b>Flammability Limits (%):</b>	N App
<b>Autoignition Temperature (°C):</b>	N Av
<b>Melting Point/Range (°C):</b>	N Av
<b>Boiling Point/Range (°C):</b>	N Av
<b>pH:</b>	6 - 7.5 (5% Aqu Sol)
<b>Viscosity:</b>	N Av
<b>Total VOC (g/Litre):</b>	N Av

(Typical values only - consult specification sheet)  
N Av = Not available, N App = Not applicable

## 10. STABILITY AND REACTIVITY

**Chemical stability:** This material is thermally stable when stored and used as directed.

**Conditions to avoid:** Elevated temperatures and sources of ignition.

**Incompatible materials:** Oxidising agents.

**Hazardous decomposition products:** Oxides of carbon and nitrogen, smoke and other toxic fumes.

**Hazardous reactions:** No known hazardous reactions.

## 11. TOXICOLOGICAL INFORMATION

No adverse health effects expected if the product is handled in accordance with this Safety Data Sheet and the product label. Symptoms or effects that may arise if the product is mishandled and overexposure occurs are:

### Acute Effects

**Inhalation:** Material may be an irritant to mucous membranes and respiratory tract.

**Skin contact:** Contact with skin may result in irritation. A skin sensitiser. Repeated or prolonged skin contact may lead to allergic contact dermatitis.

**Ingestion:** Swallowing can result in nausea, vomiting and irritation of the gastrointestinal tract.

**Eye contact:** May be an eye irritant.

## Acute toxicity

**Inhalation:** This material has been classified as not hazardous for acute inhalation exposure. Acute toxicity estimate (based on ingredients):  $LC_{50} > 20.0$  mg/L for vapours or  $LC_{50} > 5.0$  mg/L for dust and mist.

**Skin contact:** This material has been classified as not hazardous for acute dermal exposure. Acute toxicity estimate (based on ingredients):  $LD_{50} > 2,000$  mg/Kg bw

**Ingestion:** This material has been classified as not hazardous for acute ingestion exposure. Acute toxicity estimate (based on ingredients):  $LD_{50} > 2,000$  mg/Kg bw

**Corrosion/Irritancy:** Eye: this material has been classified as not corrosive or irritating to eyes. Skin: this material has been classified as not corrosive or irritating to skin.

**Sensitisation:** Inhalation: this material has been classified as not a respiratory sensitiser. Skin: this material has been classified as a Category 1 Hazard (skin sensitiser).

**Aspiration hazard:** This material has been classified as not an aspiration hazard.

**Specific target organ toxicity (single exposure):** This material has been classified as not a specific hazard to target organs by a single exposure.

## Chronic Toxicity

**Mutagenicity:** This material has been classified as not a mutagen.

**Carcinogenicity:** This material has been classified as not a carcinogen.

**Reproductive toxicity (including via lactation):** This material has been classified as not a reproductive toxicant.

**Specific target organ toxicity (repeat exposure):** This material has been classified as not a specific hazard to target organs by repeat exposure.

## 12. ECOLOGICAL INFORMATION

Avoid contaminating waterways.

**Acute aquatic hazard:** This material has been classified as a Category Acute 1 Hazard. Acute toxicity estimate (based on ingredients):  $\leq 1$  mg/L

**Long-term aquatic hazard:** This material has been classified as a Category Chronic 1 Hazard. Non-rapidly or rapidly degradable substance for which there are adequate chronic toxicity data available OR in the absence of chronic toxicity data, Acute toxicity estimate (based on ingredients):  $<1$  mg/L, where the substance is not rapidly degradable and/or  $BCF \geq 500$  and/or  $\log K_{ow} \geq 4$ .

**Ecotoxicity:** No information available.

**Persistence and degradability:** No information available.

**Bioaccumulative potential:** No information available.

**Mobility:** No information available.

## 13. DISPOSAL CONSIDERATIONS

Persons conducting disposal, recycling or reclamation activities should ensure that appropriate personal

# Safety Data Sheet

# arxada

protection equipment is used, see "Section 8. Exposure Controls and Personal Protection" of this SDS.

If possible material and its container should be recycled. If material or container cannot be recycled, dispose in accordance with local, regional, national and international Regulations.

## 14. TRANSPORT INFORMATION

### ROAD AND RAIL TRANSPORT

Classified as Dangerous Goods by the criteria of the "Australian Code for the Transport of Dangerous Goods by Road & Rail" and the "New Zealand NZS5433: Transport of Dangerous Goods on Land".

Australian Special Provisions; AU01: Environmentally Hazardous Substances meeting the description of UN 3077 or UN 3082 are not subject to this Code (ADG 07) when transported by road or rail in;

- (c) packagings that do not incorporate a receptacle exceeding 500 Kg (L); or
- (d) IBCs.



**UN No:** 3082  
**Dangerous Goods Class:** 9  
**Packing Group:** III  
**Hazchem Code:** •3Z  
**Emergency Response Guide No:** 47  
**Limited Quantities:** 5 L

**Proper Shipping Name:** ENVIRONMENTALLY HAZARDOUS SUBSTANCE, LIQUID, N.O.S. (IMIDACLOPRID)

**Segregation Dangerous Goods:** Not to be loaded with explosives (Class 1). Note 1: Materials that are fire risks are incompatible with oxidising agents (Class 5.1) or organic peroxides (Class 5.2). Exemptions may apply.

### MARINE TRANSPORT

Classified as Dangerous Goods by the criteria of the International Maritime Dangerous Goods Code (IMDG Code) for transport by sea. This material is classified as a Marine Pollutant (P) according to the International Maritime Dangerous Goods Code.



**UN No:** 3082  
**Dangerous Goods Class:** 9  
**Packing Group:** III  
**Limited Quantities:** 5 L  
**Proper Shipping Name:** ENVIRONMENTALLY HAZARDOUS SUBSTANCE, LIQUID, N.O.S. (IMIDACLOPRID)

### AIR TRANSPORT

Classified as Dangerous Goods by the criteria of the International Air Transport Association (IATA) Dangerous Goods Regulations for transport by air.



**UN No:** 3082  
**Dangerous Goods Class:** 9  
**Packing Group:** III  
**Limited Quantities:** 30 kg G  
**Proper Shipping Name:** ENVIRONMENTALLY HAZARDOUS SUBSTANCE, LIQUID, N.O.S. (IMIDACLOPRID)

## 15. REGULATORY INFORMATION

**This material is not subject to the following international agreements:**

Montreal Protocol (Ozone depleting substances)  
The Stockholm Convention (Persistent Organic Pollutants)  
The Rotterdam Convention (Prior Informed Consent)

**This material is subject to the following international agreements:**

Basel Convention (Hazardous Waste)  
• Wastes from the manufacture, formulation and use of wood preserving chemicals

International Convention for the Prevention of Pollution from Ships (MARPOL)

- Annex II - Noxious Liquid Substances carried in Bulk
- Annex III - Harmful Substances carried in Packaged Form

**This material/constituent(s) is covered by the following requirements:**

The Standard for the Uniform Scheduling of Medicines and Poisons (SUSMP) established under the Therapeutic Goods Act (Commonwealth): Not Applicable.

AICIS Status: All components of this product are listed on or exempt from the Australian Inventory of Industrial Chemicals (AIC).

## 16. OTHER INFORMATION

Reason for issue: Minor Text Changes

This Safety Data Sheet has been prepared by Chemical Data Services Pty Ltd (chemdata.com.au) on behalf of its client.

This information was prepared in good faith from the best information available at the time of issue. It is based on the present level of research and to this extent we believe it is accurate. However, no guarantee of accuracy is made or implied and since conditions of use are beyond our control, all information relevant to usage is offered without warranty. The manufacturer will not be held responsible for any unauthorised use of this information or for any modified or altered versions.

If you are an employer it is your duty to tell your employees, and any others that may be affected, of any hazards described in this sheet and of any precautions that should be taken.

Safety Data Sheets are updated frequently. Please ensure you have a current copy.

# Safety Data Sheet



NON-Hazardous, NON-Dangerous Goods

## 1. MATERIAL AND SUPPLY COMPANY IDENTIFICATION

Product name: **TANALITH TI INSECTICIDE - READY TO USE FOR SPRAY SYSTEM**

Recommended use: Termiticide for wood products; ready to use formulation

Supplier: Arch Wood Protection (Aust) Pty Limited  
ABN: 95 003 780 872  
Street Address: Station Street  
Trentham, VIC, 3458  
Australia.  
Telephone: +613 5424-1350

Emergency Telephone number: 1800 7WOOD7

## 2. HAZARDS IDENTIFICATION

Based on available information, this material is not classified as hazardous according to criteria of Safe Work Australia GHS 7.

Poison Schedule: Not Applicable

### DANGEROUS GOOD CLASSIFICATION

Not classified as Dangerous Goods by the criteria of the "Australian Code for the Transport of Dangerous Goods by Road & Rail" and the "New Zealand NZS5433: Transport of Dangerous Goods on Land".

## 3. COMPOSITION INFORMATION

CHEMICAL ENTITY	CAS NO	PROPORTION
Ingredients determined to be Non-Hazardous		100 %
		100%

## 4. FIRST AID MEASURES

If poisoning occurs, contact a doctor or Poisons Information Centre (Phone Australia 131 126, New Zealand 0800 764 766).

**Inhalation:** Remove victim from exposure - avoid becoming a casualty. Remove contaminated clothing and loosen remaining clothing. Allow patient to assume most comfortable position and keep warm. Keep at rest until fully recovered. Seek medical advice if effects persist.

**Skin Contact:** If skin or hair contact occurs, remove contaminated clothing and flush skin and hair with running water. If swelling, redness, blistering or irritation occurs seek medical assistance.

**Eye contact:** If in eyes wash out immediately with water. In all cases of eye contamination it is a sensible

Product Name: **TANALITH TI INSECTICIDE - READY TO USE FOR SPRAY SYSTEM**

Reference No: **LWP0031**

Issued: 2023-07-27

Version: 3.0

Page 1 of 6

# Safety Data Sheet



precaution to seek medical advice.

**Ingestion:** Rinse mouth with water. If swallowed, do NOT induce vomiting. Give a glass of water to drink. Never give anything by the mouth to an unconscious patient. If vomiting occurs give further water. Seek medical advice.

**PPE for First Aiders:** Wear safety shoes, overalls, gloves, safety glasses. Available information suggests that gloves made from nitrile rubber should be suitable for intermittent contact. However, due to variations in glove construction and local conditions, the user should make a final assessment. Always wash hands before smoking, eating, drinking or using the toilet. Wash contaminated clothing and other protective equipment before storing or re-using.

**Notes to physician:** Treat symptomatically.

## 5. FIRE FIGHTING MEASURES

**Hazchem Code:** Not applicable.

**Suitable extinguishing media:** If material is involved in a fire use water fog (or if unavailable fine water spray), alcohol resistant foam, standard foam, dry agent (carbon dioxide, dry chemical powder).

**Specific hazards:** Non-combustible material.

**Fire fighting further advice:** Not combustible, however following evaporation of aqueous component residual material can burn if ignited.

## 6. ACCIDENTAL RELEASE MEASURES

### SMALL SPILLS

Wear protective equipment to prevent skin and eye contamination. Avoid inhalation of vapours or dust. Wipe up with absorbent (clean rag or paper towels). Collect and seal in properly labelled containers or drums for disposal.

### LARGE SPILLS

Clear area of all unprotected personnel. Slippery when spilt. Avoid accidents, clean up immediately. Wear protective equipment to prevent skin and eye contamination and the inhalation of vapours. Work up wind or increase ventilation. Contain - prevent run off into drains and waterways. Use absorbent (soil, sand or other inert material). Collect and seal in properly labelled containers or drums for disposal. If contamination of crops, sewers or waterways has occurred advise local emergency services.

**Dangerous Goods - Initial Emergency Response Guide No:** Not applicable

## 7. HANDLING AND STORAGE

**Handling:** Avoid eye contact and repeated or prolonged skin contact. Avoid inhalation of vapour, mist or aerosols.

**Storage:** Store in a cool, dry, well-ventilated place and out of direct sunlight. Store away from foodstuffs. Store away from incompatible materials described in Section 10. Store away from sources of heat and/or ignition. Keep container standing upright. Keep containers closed when not in use - check regularly for leaks.

## 8. EXPOSURE CONTROLS / PERSONAL PROTECTION

**National occupational exposure limits:** No value assigned for this specific material by Safe Work Australia.

# Safety Data Sheet



**Biological Limit Values:** As per the "National Model Regulations for the Control of Workplace Hazardous Substances (Safe Work Australia)" the ingredients in this material do not have a Biological Limit Allocated.

**Engineering Measures:** Natural ventilation should be adequate under normal use conditions.

**Personal Protection Equipment:** SAFETY SHOES, OVERALLS, GLOVES, SAFETY GLASSES.

Personal protective equipment (PPE) must be suitable for the nature of the work and any hazard associated with the work as identified by the risk assessment conducted.

Wear safety shoes, overalls, gloves, safety glasses. Available information suggests that gloves made from nitrile rubber should be suitable for intermittent contact. However, due to variations in glove construction and local conditions, the user should make a final assessment. Always wash hands before smoking, eating, drinking or using the toilet. Wash contaminated clothing and other protective equipment before storing or re-using.

**Hygiene measures:** Keep away from food, drink and animal feeding stuffs. When using do not eat, drink or smoke. Wash hands prior to eating, drinking or smoking. Avoid contact with clothing. Avoid eye contact and repeated or prolonged skin contact. Avoid inhalation of vapour, mist or aerosols. Ensure that eyewash stations and safety showers are close to the workstation location.

## 9. PHYSICAL AND CHEMICAL PROPERTIES

**Form:** Liquid  
**Colour:** Blue  
**Odour:** N Av

**Solubility:** Miscible with water  
**Specific Gravity:** Approx. 1.0  
**Relative Vapour Density (air=1):** >1  
**Vapour Pressure:** N Av  
**Flash Point (°C):** N App  
**Flammability Limits (%):** N App  
**Autoignition Temperature (°C):** N Av  
**Melting Point/Range (°C):** Approx. 0  
**Boiling Point/Range (°C):** Approx. 100  
**pH:** 6 - 7  
**Viscosity:** N Av  
**Total VOC (g/Litre):** N Av

(Typical values only - consult specification sheet)  
N Av = Not available, N App = Not applicable

## 10. STABILITY AND REACTIVITY

**Chemical stability:** This material is thermally stable when stored and used as directed.

**Conditions to avoid:** Elevated temperatures and sources of ignition.

**Incompatible materials:** Oxidising agents.

**Hazardous decomposition products:** Oxides of carbon and nitrogen, smoke and other toxic fumes.

**Hazardous reactions:** No known hazardous reactions.

## 11. TOXICOLOGICAL INFORMATION

Product Name: TANALITH TI INSECTICIDE - READY TO USE  
FOR SPRAY SYSTEM

Reference No: LWP0031

Issued: 2023-07-27

Version: 3.0

Page 3 of 6

No adverse health effects expected if the product is handled in accordance with this Safety Data Sheet and the product label. Symptoms or effects that may arise if the product is mishandled and overexposure occurs are:

## Acute Effects

**Inhalation:** Material may be an irritant to mucous membranes and respiratory tract.

**Skin contact:** Contact with skin may result in irritation.

**Ingestion:** Swallowing can result in nausea, vomiting and irritation of the gastrointestinal tract.

**Eye contact:** May be an eye irritant.

## Acute toxicity

**Inhalation:** This material has been classified as not hazardous for acute inhalation exposure. Acute toxicity estimate (based on ingredients):  $LC_{50} > 20.0$  mg/L for vapours or  $LC_{50} > 5.0$  mg/L for dust and mist.

**Skin contact:** This material has been classified as not hazardous for acute dermal exposure. Acute toxicity estimate (based on ingredients):  $LD_{50} > 2,000$  mg/Kg bw

**Ingestion:** This material has been classified as not hazardous for acute ingestion exposure. Acute toxicity estimate (based on ingredients):  $LD_{50} > 2,000$  mg/Kg bw

**Corrosion/Irritancy:** Eye: this material has been classified as not corrosive or irritating to eyes. Skin: this material has been classified as not corrosive or irritating to skin.

**Sensitisation:** Inhalation: this material has been classified as not a respiratory sensitiser. Skin: this material has been classified as not a skin sensitiser.

**Aspiration hazard:** This material has been classified as not an aspiration hazard.

**Specific target organ toxicity (single exposure):** This material has been classified as not a specific hazard to target organs by a single exposure.

## Chronic Toxicity

**Mutagenicity:** This material has been classified as not a mutagen.

**Carcinogenicity:** This material has been classified as not a carcinogen.

**Reproductive toxicity (including via lactation):** This material has been classified as not a reproductive toxicant.

**Specific target organ toxicity (repeat exposure):** This material has been classified as not a specific hazard to target organs by repeat exposure.

## 12. ECOLOGICAL INFORMATION

Avoid contaminating waterways.

**Acute aquatic hazard:** This material has been classified as not hazardous for acute aquatic exposure. Acute toxicity estimate (based on ingredients):  $> 100$  mg/L

**Long-term aquatic hazard:** This material has been classified as not hazardous for chronic aquatic exposure. Non-rapidly or rapidly degradable substance for which there are adequate chronic toxicity data available OR in the absence of chronic toxicity data, Acute toxicity estimate (based on ingredients):  $> 100$  mg/L, where the substance is not rapidly degradable and/or  $BCF < 500$  and/or  $\log K_{ow} < 4$ .

# Safety Data Sheet



**Ecotoxicity:** No information available.

**Persistence and degradability:** No information available.

**Bioaccumulative potential:** No information available.

**Mobility:** No information available.

## 13. DISPOSAL CONSIDERATIONS

Persons conducting disposal, recycling or reclamation activities should ensure that appropriate personal protection equipment is used, see "Section 8. Exposure Controls and Personal Protection" of this SDS.

If possible material and its container should be recycled. If material or container cannot be recycled, dispose in accordance with local, regional, national and international Regulations.

## 14. TRANSPORT INFORMATION

### ROAD AND RAIL TRANSPORT

Not classified as Dangerous Goods by the criteria of the "Australian Code for the Transport of Dangerous Goods by Road & Rail" and the "New Zealand NZS5433: Transport of Dangerous Goods on Land".

### MARINE TRANSPORT

Not classified as Dangerous Goods by the criteria of the International Maritime Dangerous Goods Code (IMDG Code) for transport by sea.

### AIR TRANSPORT

Not classified as Dangerous Goods by the criteria of the International Air Transport Association (IATA) Dangerous Goods Regulations for transport by air.

## 15. REGULATORY INFORMATION

**This material is not subject to the following international agreements:**

Montreal Protocol (Ozone depleting substances)  
The Stockholm Convention (Persistent Organic Pollutants)  
The Rotterdam Convention (Prior Informed Consent)  
Basel Convention (Hazardous Waste)  
International Convention for the Prevention of Pollution from Ships (MARPOL)

**This material/constituent(s) is covered by the following requirements:**

The Standard for the Uniform Scheduling of Medicines and Poisons (SUSMP) established under the Therapeutic Goods Act (Commonwealth): Not Applicable.

AICIS Status: All components of this product are listed on or exempt from the Australian Inventory of Industrial Chemicals (AIIC).

## 16. OTHER INFORMATION

Reason for issue: Revised

This Safety Data Sheet has been prepared by Chemical Data Services Pty Ltd (chemdata.com.au) on behalf of its client.

# Safety Data Sheet



This information was prepared in good faith from the best information available at the time of issue. It is based on the present level of research and to this extent we believe it is accurate. However, no guarantee of accuracy is made or implied and since conditions of use are beyond our control, all information relevant to usage is offered without warranty. The manufacturer will not be held responsible for any unauthorised use of this information or for any modified or altered versions.

If you are an employer it is your duty to tell your employees, and any others that may be affected, of any hazards described in this sheet and of any precautions that should be taken.

Safety Data Sheets are updated frequently. Please ensure you have a current copy.

# Safety Data Sheet



NON-Hazardous, NON-Dangerous Goods

## 1. MATERIAL AND SUPPLY COMPANY IDENTIFICATION

Product name: **TANALITH Ti INSECTICIDE - TREATED TIMBER**

Recommended use: H2F Envelope Treated Softwood and Engineered Wood Products.

Supplier: Arch Wood Protection (Aust) Pty Limited

ABN: 95 003 780 872

Street Address: Station Street  
Trentham, VIC, 3458  
Australia.

Telephone: +613 5424-1350

Emergency Telephone number: 1800 7WOOD7

## 2. HAZARDS IDENTIFICATION

Based on available information, this material is not classified as hazardous according to criteria of Safe Work Australia GHS 7.

Poison Schedule: Not Applicable

### DANGEROUS GOOD CLASSIFICATION

Not classified as Dangerous Goods by the criteria of the "Australian Code for the Transport of Dangerous Goods by Road & Rail" and the "New Zealand NZS5433: Transport of Dangerous Goods on Land".

## 3. COMPOSITION INFORMATION

CHEMICAL ENTITY	CAS NO	PROPORTION
Soft or hard wood timber		>99 % (w/w)
Preservative		<1 % (w/w)
Ingredients determined to be Non-Hazardous		Balance
		<hr/> 100%

## 4. FIRST AID MEASURES

If poisoning occurs, contact a doctor or Poisons Information Centre (Phone Australia 131 126, New Zealand 0800 764 766).

**Inhalation:** Remove victim from exposure - avoid becoming a casualty. Remove contaminated clothing and loosen remaining clothing. Allow patient to assume most comfortable position and keep warm. Keep at rest until fully recovered. Seek medical advice if effects persist.

**Skin Contact:** If skin or hair contact occurs, remove contaminated clothing and flush skin and hair with running water. If swelling, redness, blistering or irritation occurs seek medical assistance.

**Eye contact:** If in eyes wash out immediately with water. In all cases of eye contamination it is a sensible precaution to seek medical advice.

# Safety Data Sheet



**Ingestion:** Rinse mouth with water. If swallowed, do NOT induce vomiting. Give a glass of water to drink. Never give anything by the mouth to an unconscious patient. If vomiting occurs give further water. Seek medical advice.

**PPE for First Aiders:** Wear safety shoes, overalls, gloves, safety glasses. Available information suggests that gloves made from leather should be suitable for intermittent contact. However, due to variations in glove construction and local conditions, the user should make a final assessment. Always wash hands before smoking, eating, drinking or using the toilet. Wash contaminated clothing and other protective equipment before storing or re-using.

**Notes to physician:** Treat symptomatically.

## 5. FIRE FIGHTING MEASURES

**Hazchem Code:** Not applicable.

**Suitable extinguishing media:** If material is involved in a fire use water fog (or if unavailable fine water spray), alcohol resistant foam, standard foam, dry agent (carbon dioxide, dry chemical powder).

**Specific hazards:** Combustible material.

**Fire fighting further advice:** On burning or decomposing may emit toxic fumes. Fire fighters to wear self-contained breathing apparatus and suitable protective clothing if risk of exposure to vapour or products of combustion or decomposition.

## 6. ACCIDENTAL RELEASE MEASURES

### SMALL SPILLS

Dispose of all offcuts/shavings/sawdust/etc. as per local state/council guidelines

### LARGE SPILLS

Dispose of all offcuts/shavings/sawdust/etc. as per local state/council guidelines

**Dangerous Goods - Initial Emergency Response Guide No:** Not applicable

## 7. HANDLING AND STORAGE

**Handling:** Avoid eye contact and repeated or prolonged skin contact. Avoid inhalation of dust.

**Storage:** Store in a cool, dry, well-ventilated place and out of direct sunlight. Store away from foodstuffs. Store away from incompatible materials described in Section 10. Store away from sources of heat and/or ignition. Keep container standing upright. Keep containers closed when not in use - check regularly for spills.

## 8. EXPOSURE CONTROLS / PERSONAL PROTECTION

**National occupational exposure limits:**

	TWA		STEL		NOTICES
	ppm	mg/m <sup>3</sup>	ppm	mg/m <sup>3</sup>	
Wood dust (certain hardwoods such as beech & oak)	-	1	-	-	Sen
Wood dust (soft wood)	-	5	-	10	Sen

# Safety Data Sheet



As published by Safe Work Australia.

**TWA** - The time-weighted average airborne concentration over an eight-hour working day, for a five-day working week over an entire working life.

**STEL (Short Term Exposure Limit)** - the average airborne concentration over a 15 minute period which should not be exceeded at any time during a normal eight-hour workday.

'Sen' Notice - sensitiser. The substance can cause a specific immune response in some people. An affected individual may subsequently react to exposure to minute levels of that substance.

These Exposure Standards are guides to be used in the control of occupational health hazards. All atmospheric contamination should be kept to as low a level as is workable. These exposure standards should not be used as fine dividing lines between safe and dangerous concentrations of chemicals. They are not a measure of relative toxicity.

If the directions for use on the product label are followed, exposure of individuals using the product should not exceed the above standard. The standard was created for workers who are routinely, potentially exposed during product manufacture.

**Biological Limit Values:** As per the "National Model Regulations for the Control of Workplace Hazardous Substances (Safe Work Australia)" the ingredients in this material do not have a Biological Limit Allocated.

**Engineering Measures:** Ensure ventilation is adequate to maintain air concentrations below Exposure Standards. Use only in well ventilated areas. Avoid generating and inhaling dusts. Use with local exhaust ventilation or while wearing dust mask.

**Personal Protection Equipment:** SAFETY SHOES, OVERALLS, GLOVES, SAFETY GLASSES.

Personal protective equipment (PPE) must be suitable for the nature of the work and any hazard associated with the work as identified by the risk assessment conducted.

Wear safety shoes, overalls, gloves, safety glasses. Available information suggests that gloves made from leather should be suitable for intermittent contact. However, due to variations in glove construction and local conditions, the user should make a final assessment. Always wash hands before smoking, eating, drinking or using the toilet. Wash contaminated clothing and other protective equipment before storing or re-using.

**Hygiene measures:** Keep away from food, drink and animal feeding stuffs. When using do not eat, drink or smoke. Wash hands prior to eating, drinking or smoking. Avoid contact with clothing. Avoid eye contact and repeated or prolonged skin contact. Avoid inhalation of dust. Ensure that eyewash stations and safety showers are close to the workstation location.

## 9. PHYSICAL AND CHEMICAL PROPERTIES

**Form:** Solid  
**Colour:** N Av  
**Odour:** N Av

**Solubility:** Insoluble in water  
**Specific Gravity:** 0.6 - 1.0 (depending on moisture content)  
**Relative Vapour Density (air=1):** N App  
**Vapour Pressure:** N App  
**Flash Point (°C):** N App  
**Flammability Limits (%):** N App  
**Autoignition Temperature (°C):** N Av  
**Melting Point/Range (°C):** N App  
**Boiling Point/Range (°C):** N App  
**pH:** N App  
**Viscosity:** N App  
**Total VOC (g/Litre):** N Av

**Product Name:** TANALITH Ti INSECTICIDE - TREATED TIMBER

**Reference No:** LWP0032

**Issued:** 2023-07-26

**Version:** 2.0

**Page** 3 of 6

(Typical values only - consult specification sheet)  
N Av = Not available, N App = Not applicable

## 10. STABILITY AND REACTIVITY

**Chemical stability:** This material is thermally stable when stored and used as directed.

**Conditions to avoid:** Elevated temperatures and sources of ignition.

**Incompatible materials:** Oxidising agents.

**Hazardous decomposition products:** Oxides of carbon and nitrogen, smoke and other toxic fumes.

**Hazardous reactions:** No known hazardous reactions.

## 11. TOXICOLOGICAL INFORMATION

No adverse health effects expected if the product is handled in accordance with this Safety Data Sheet and the product label. Symptoms or effects that may arise if the product is mishandled and overexposure occurs are:

### Acute Effects

**Inhalation:** Material may be an irritant to mucous membranes and respiratory tract.

**Skin contact:** Contact with skin may result in irritation.

**Ingestion:** Swallowing can result in nausea, vomiting and irritation of the gastrointestinal tract.

**Eye contact:** May be an eye irritant. Exposure to the dust may cause discomfort due to particulate nature. May cause physical irritation to the eyes.

### Acute toxicity

**Inhalation:** This material has been classified as not hazardous for acute inhalation exposure. Acute toxicity estimate (based on ingredients):  $LC_{50} > 5.0$  mg/L for dust.

**Skin contact:** This material has been classified as not hazardous for acute dermal exposure. Acute toxicity estimate (based on ingredients):  $LD_{50} > 2,000$  mg/Kg bw

**Ingestion:** This material has been classified as not hazardous for acute ingestion exposure. Acute toxicity estimate (based on ingredients):  $LD_{50} > 2,000$  mg/Kg bw

**Corrosion/Irritancy:** Eye: this material has been classified as not corrosive or irritating to eyes. Skin: this material has been classified as not corrosive or irritating to skin.

**Sensitisation:** Inhalation: this material has been classified as not a respiratory sensitiser. Skin: this material has been classified as not a skin sensitiser.

**Aspiration hazard:** This material has been classified as not an aspiration hazard.

**Specific target organ toxicity (single exposure):** This material has been classified as not a specific hazard to target organs by a single exposure.

### Chronic Toxicity

**Mutagenicity:** This material has been classified as not a mutagen.

# Safety Data Sheet



**Carcinogenicity:** This material has been classified as not a carcinogen.

**Reproductive toxicity (including via lactation):** This material has been classified as not a reproductive toxicant.

**Specific target organ toxicity (repeat exposure):** This material has been classified as not a specific hazard to target organs by repeat exposure.

## 12. ECOLOGICAL INFORMATION

Avoid contaminating waterways.

**Acute aquatic hazard:** This material has been classified as not hazardous for acute aquatic exposure. Acute toxicity estimate (based on ingredients): > 100 mg/L

**Long-term aquatic hazard:** This material has been classified as not hazardous for chronic aquatic exposure. Non-rapidly or rapidly degradable substance for which there are adequate chronic toxicity data available OR in the absence of chronic toxicity data, Acute toxicity estimate (based on ingredients): >100 mg/L, where the substance is not rapidly degradable and/or BCF < 500 and/or log  $K_{ow}$  < 4.

**Ecotoxicity:** No information available.

**Persistence and degradability:** No information available.

**Bioaccumulative potential:** No information available.

**Mobility:** No information available.

## 13. DISPOSAL CONSIDERATIONS

Persons conducting disposal, recycling or reclamation activities should ensure that appropriate personal protection equipment is used, see "Section 8. Exposure Controls and Personal Protection" of this SDS.

If possible material and its container should be recycled. If material or container cannot be recycled, dispose in accordance with local, regional, national and international Regulations.

## 14. TRANSPORT INFORMATION

### ROAD AND RAIL TRANSPORT

Not classified as Dangerous Goods by the criteria of the "Australian Code for the Transport of Dangerous Goods by Road & Rail" and the "New Zealand NZS5433: Transport of Dangerous Goods on Land".

### MARINE TRANSPORT

Not classified as Dangerous Goods by the criteria of the International Maritime Dangerous Goods Code (IMDG Code) for transport by sea.

### AIR TRANSPORT

Not classified as Dangerous Goods by the criteria of the International Air Transport Association (IATA) Dangerous Goods Regulations for transport by air.

## 15. REGULATORY INFORMATION

**This material is not subject to the following international agreements:**

Montreal Protocol (Ozone depleting substances)  
The Stockholm Convention (Persistent Organic Pollutants)  
The Rotterdam Convention (Prior Informed Consent)

# Safety Data Sheet



Basel Convention (Hazardous Waste)

International Convention for the Prevention of Pollution from Ships (MARPOL)

**This material/constituent(s) is covered by the following requirements:**

The Standard for the Uniform Scheduling of Medicines and Poisons (SUSMP) established under the Therapeutic Goods Act (Commonwealth): Not Applicable.

AICIS Status: All components of this product are listed on or exempt from the Australian Inventory of Industrial Chemicals (AIIC).

## 16. OTHER INFORMATION

Reason for issue: Revised

This Safety Data Sheet has been prepared by Chemical Data Services Pty Ltd (chemdata.com.au) on behalf of its client.

This information was prepared in good faith from the best information available at the time of issue. It is based on the present level of research and to this extent we believe it is accurate. However, no guarantee of accuracy is made or implied and since conditions of use are beyond our control, all information relevant to usage is offered without warranty. The manufacturer will not be held responsible for any unauthorised use of this information or for any modified or altered versions.

If you are an employer it is your duty to tell your employees, and any others that may be affected, of any hazards described in this sheet and of any precautions that should be taken.

Safety Data Sheets are updated frequently. Please ensure you have a current copy.

# Safety Data Sheet

# arxada

Hazardous, NON-Dangerous Goods

## 1. MATERIAL AND SUPPLY COMPANY IDENTIFICATION

Product name: **BLUE 250 WATER PIGMENT PACK**

Recommended use: Pigment

Supplier: Arch Wood Protection (Aust) Pty Limited  
ABN: 95 003 780 872  
Street Address: Station Street  
Trentham, VIC, 3458  
Australia.  
Telephone: +613 5424-1350

Emergency Telephone number: 1800 7WOOD7

## 2. HAZARDS IDENTIFICATION

This material is hazardous according to the criteria of Safe Work Australia GHS 7.



### Signal Word

Warning

### Hazard Classifications

Skin Corrosion/Irritation - Category 2  
Eye Damage/Irritation - Category 2A  
Sensitisation - Skin - Category 1

### Hazard Statements

H315 Causes skin irritation.  
H317 May cause an allergic skin reaction.  
H319 Causes serious eye irritation.

### Prevention Precautionary Statements

P102 Keep out of reach of children.  
P103 Read carefully and follow all instructions.  
P261 Avoid breathing dust, fume, gas, mist, vapours or spray..  
P264 Wash hands, face and all exposed skin thoroughly after handling.  
P272 Contaminated work clothing should not be allowed out of the workplace.  
P280 Wear protective gloves/protective clothing including eye/face protection and suitable respirator.

### Response Precautionary Statements

P101 If medical advice is needed, have product container or label at hand.  
P302+P352 IF ON SKIN: Wash with plenty of water and soap.  
P305+P351+P338 IF IN EYES: Rinse cautiously with water for several minutes. Remove contact lenses, if present and easy to do. Continue rinsing.  
P333+P313 If skin irritation or rash occurs: Get medical advice/attention.  
P337+P313 If eye irritation persists: Get medical advice/attention.  
P362+P364 Take off contaminated clothing and wash it before reuse

# Safety Data Sheet



**Storage Precautionary Statement**  
Not allocated

**Disposal Precautionary Statement**  
P501 Dispose of contents/container in accordance with local, regional, national and international regulations.

**Poison Schedule:** Not Applicable

## DANGEROUS GOOD CLASSIFICATION

Not classified as Dangerous Goods by the criteria of the "Australian Code for the Transport of Dangerous Goods by Road & Rail" and the "New Zealand NZS5433: Transport of Dangerous Goods on Land".

## 3. COMPOSITION INFORMATION

CHEMICAL ENTITY	CAS NO	PROPORTION
Diethylene glycol	111-46-6	1 - 10 % (w/w)
3(2H)-Isothiazolone, 2-octyl-	26530-20-1	1 - 10 % (w/w)
5-chloro-2-methyl-2H-isothiazol-3-one	26172-55-4	<1 % (w/w)
2-methyl-2H-isothiazol-3-one	2682-20-4	<1 % (w/w)
Ingredients determined to be Non-Hazardous		Balance
		100%

## 4. FIRST AID MEASURES

If poisoning occurs, contact a doctor or Poisons Information Centre (Phone Australia 131 126, New Zealand 0800 764 766).

**Inhalation:** Remove victim from exposure - avoid becoming a casualty. Remove contaminated clothing and loosen remaining clothing. Allow patient to assume most comfortable position and keep warm. Keep at rest until fully recovered. Seek medical advice if effects persist.

**Skin Contact:** Effects may be delayed. If skin or hair contact occurs, immediately remove contaminated clothing and flush skin and hair with running water. Continue flushing with water until advised to stop by the Poisons Information Centre or a Doctor; or for 15 minutes and transport to Doctor or Hospital.

**Eye contact:** If in eyes, hold eyelids apart and flush the eyes continuously with running water. Continue flushing until advised to stop by the Poisons Information Centre or a Doctor; or for at least 15 minutes and transport to Doctor or Hospital.

**Ingestion:** Rinse mouth with water. If swallowed, do NOT induce vomiting. Give a glass of water to drink. Never give anything by the mouth to an unconscious patient. If vomiting occurs give further water. Seek medical advice.

**PPE for First Aiders:** Wear safety shoes, overalls, gloves, safety glasses. Available information suggests that gloves made from nitrile rubber should be suitable for intermittent contact. However, due to variations in glove construction and local conditions, the user should make a final assessment. Always wash hands before smoking, eating, drinking or using the toilet. Wash contaminated clothing and other protective equipment before storing or re-using.

**Notes to physician:** Treat symptomatically. Effects may be delayed.

## 5. FIRE FIGHTING MEASURES

Product Name: BLUE 250 WATER PIGMENT PACK

Reference No: LWP0101

Issued: 2021-03-23

Version: 3.4

Page 2 of 7

# Safety Data Sheet



**Hazchem Code:** Not applicable.

**Suitable extinguishing media:** If material is involved in a fire use water fog (or if unavailable fine water spray), alcohol resistant foam, standard foam, dry agent (carbon dioxide, dry chemical powder).

**Specific hazards:** Non-combustible material.

**Fire fighting further advice:** Not combustible, however following evaporation of aqueous component residual material can burn if ignited.

## 6. ACCIDENTAL RELEASE MEASURES

### SMALL SPILLS

Wear protective equipment to prevent skin and eye contamination. Avoid inhalation of vapours or dust. Wipe up with absorbent (clean rag or paper towels). Collect and seal in properly labelled containers or drums for disposal.

### LARGE SPILLS

Clear area of all unprotected personnel. Slippery when spilt. Avoid accidents, clean up immediately. Wear protective equipment to prevent skin and eye contamination and the inhalation of vapours. Work up wind or increase ventilation. Contain - prevent run off into drains and waterways. Use absorbent (soil, sand or other inert material). Collect and seal in properly labelled containers or drums for disposal. If contamination of crops, sewers or waterways has occurred advise local emergency services.

**Dangerous Goods - Initial Emergency Response Guide No:** Not applicable

## 7. HANDLING AND STORAGE

**Handling:** Avoid eye contact and skin contact. Avoid inhalation of vapour, mist or aerosols.

**Storage:** Store in a cool, dry, well-ventilated place and out of direct sunlight. Store away from foodstuffs. Store away from incompatible materials described in Section 10. Store away from sources of heat and/or ignition. Keep container standing upright. Keep containers closed when not in use - check regularly for leaks.

## 8. EXPOSURE CONTROLS / PERSONAL PROTECTION

**National occupational exposure limits:**

	TWA		STEL		NOTICES
	ppm	mg/m <sup>3</sup>	ppm	mg/m <sup>3</sup>	
2,2'-Oxybis[ethanol]	23	100	-	-	-

As published by Safe Work Australia.

**TWA** - The time-weighted average airborne concentration over an eight-hour working day, for a five-day working week over an entire working life.

**STEL** (Short Term Exposure Limit) - the average airborne concentration over a 15 minute period which should not be exceeded at any time during a normal eight-hour workday.

These Exposure Standards are guides to be used in the control of occupational health hazards. All atmospheric contamination should be kept to as low a level as is workable. These exposure standards should not be used as fine dividing lines between safe and dangerous concentrations of chemicals. They are not a measure of relative toxicity.

# Safety Data Sheet



If the directions for use on the product label are followed, exposure of individuals using the product should not exceed the above standard. The standard was created for workers who are routinely, potentially exposed during product manufacture.

**Biological Limit Values:** As per the "National Model Regulations for the Control of Workplace Hazardous Substances (Safe Work Australia)" the ingredients in this material do not have a Biological Limit Allocated.

**Engineering Measures:** Ensure ventilation is adequate to maintain air concentrations below Exposure Standards. Use only in well ventilated areas. Use with local exhaust ventilation or while wearing appropriate respirator. Vapour heavier than air - prevent concentration in hollows or sumps. Do NOT enter confined spaces where vapour may have collected.

**Personal Protection Equipment:** SAFETY SHOES, OVERALLS, GLOVES, SAFETY GLASSES.

Personal protective equipment (PPE) must be suitable for the nature of the work and any hazard associated with the work as identified by the risk assessment conducted.

Wear safety shoes, overalls, gloves, safety glasses. Available information suggests that gloves made from nitrile rubber should be suitable for intermittent contact. However, due to variations in glove construction and local conditions, the user should make a final assessment. Always wash hands before smoking, eating, drinking or using the toilet. Wash contaminated clothing and other protective equipment before storing or re-using.

**Hygiene measures:** Keep away from food, drink and animal feeding stuffs. When using do not eat, drink or smoke. Wash hands prior to eating, drinking or smoking. Avoid contact with clothing. Avoid eye contact and skin contact. Avoid inhalation of vapour, mist or aerosols. Ensure that eyewash stations and safety showers are close to the workstation location.

## 9. PHYSICAL AND CHEMICAL PROPERTIES

**Form:** Liquid  
**Colour:** Dark blue  
**Odour:** Slight acrylic

**Solubility:** Miscible with water  
**Specific Gravity:** 1.04  
**Relative Vapour Density (air=1):** >1  
**Vapour Pressure (20 °C):** N Av  
**Flash Point (°C):** N App  
**Flammability Limits (%):** N App  
**Autoignition Temperature (°C):** N Av  
**Melting Point/Range (°C):** N Av  
**Boiling Point/Range (°C):** N Av  
**pH:** 6 - 7  
**Viscosity:** N Av  
**Total VOC (g/Litre):** N Av

(Typical values only - consult specification sheet)  
N Av = Not available, N App = Not applicable

## 10. STABILITY AND REACTIVITY

**Chemical stability:** This material is thermally stable when stored and used as directed.

**Conditions to avoid:** Elevated temperatures and sources of ignition.

**Incompatible materials:** Oxidising agents.

**Hazardous decomposition products:** Oxides of carbon and nitrogen, smoke and other toxic fumes.

**Hazardous reactions:** No known hazardous reactions.

## 11. TOXICOLOGICAL INFORMATION

No adverse health effects expected if the product is handled in accordance with this Safety Data Sheet and the product label. Symptoms or effects that may arise if the product is mishandled and overexposure occurs are:

### Acute Effects

**Inhalation:** Material may be an irritant to mucous membranes and respiratory tract.

**Skin contact:** Contact with skin will result in irritation. A skin sensitizer. Repeated or prolonged skin contact may lead to allergic contact dermatitis.

**Ingestion:** Swallowing can result in nausea, vomiting and irritation of the gastrointestinal tract.

**Eye contact:** An eye irritant.

### Acute toxicity

**Inhalation:** This material has been classified as not hazardous for acute inhalation exposure. Acute toxicity estimate (based on ingredients):  $LC_{50} > 20.0$  mg/L for vapours or  $LC_{50} > 5.0$  mg/L for dust and mist.

**Skin contact:** This material has been classified as not hazardous for acute dermal exposure. Acute toxicity estimate (based on ingredients):  $LD_{50} > 2,000$  mg/Kg bw

**Ingestion:** This material has been classified as not hazardous for acute ingestion exposure. Acute toxicity estimate (based on ingredients):  $LD_{50} > 2,000$  mg/Kg bw

**Corrosion/Irritancy:** Eye: this material has been classified as a Category 2A Hazard (reversible effects to eyes). Skin: this material has been classified as a Category 2 Hazard (reversible effects to skin).

**Sensitisation:** Inhalation: this material has been classified as not a respiratory sensitizer. Skin: this material has been classified as a Category 1 Hazard (skin sensitizer).

**Aspiration hazard:** This material has been classified as not an aspiration hazard.

**Specific target organ toxicity (single exposure):** This material has been classified as not a specific hazard to target organs by a single exposure.

### Chronic Toxicity

**Mutagenicity:** This material has been classified as not a mutagen.

**Carcinogenicity:** This material has been classified as not a carcinogen.

**Reproductive toxicity (including via lactation):** This material has been classified as not a reproductive toxicant.

**Specific target organ toxicity (repeat exposure):** This material has been classified as not a specific hazard to target organs by repeat exposure.

## 12. ECOLOGICAL INFORMATION

Avoid contaminating waterways.

**Acute aquatic hazard:** This material has been classified as not hazardous for acute aquatic exposure. Acute

# Safety Data Sheet



toxicity estimate (based on ingredients): > 100 mg/L

**Long-term aquatic hazard:** This material has been classified as not hazardous for chronic aquatic exposure. Non-rapidly or rapidly degradable substance for which there are adequate chronic toxicity data available OR in the absence of chronic toxicity data, Acute toxicity estimate (based on ingredients): >100 mg/L, where the substance is not rapidly degradable and/or BCF < 500 and/or log  $K_{ow}$  < 4.

**Ecotoxicity:** No information available.

**Persistence and degradability:** No information available.

**Bioaccumulative potential:** No information available.

**Mobility:** No information available.

## 13. DISPOSAL CONSIDERATIONS

Persons conducting disposal, recycling or reclamation activities should ensure that appropriate personal protection equipment is used, see "Section 8. Exposure Controls and Personal Protection" of this SDS.

If possible material and its container should be recycled. If material or container cannot be recycled, dispose in accordance with local, regional, national and international Regulations.

## 14. TRANSPORT INFORMATION

### ROAD AND RAIL TRANSPORT

Not classified as Dangerous Goods by the criteria of the "Australian Code for the Transport of Dangerous Goods by Road & Rail" and the "New Zealand NZS5433: Transport of Dangerous Goods on Land".

### MARINE TRANSPORT

Not classified as Dangerous Goods by the criteria of the International Maritime Dangerous Goods Code (IMDG Code) for transport by sea.

### AIR TRANSPORT

Not classified as Dangerous Goods by the criteria of the International Air Transport Association (IATA) Dangerous Goods Regulations for transport by air.

## 15. REGULATORY INFORMATION

**This material is not subject to the following international agreements:**

Montreal Protocol (Ozone depleting substances)  
The Stockholm Convention (Persistent Organic Pollutants)  
The Rotterdam Convention (Prior Informed Consent)  
Basel Convention (Hazardous Waste)  
International Convention for the Prevention of Pollution from Ships (MARPOL)

**This material/constituent(s) is covered by the following requirements:**

The Standard for the Uniform Scheduling of Medicines and Poisons (SUSMP) established under the Therapeutic Goods Act (Commonwealth): Not Applicable.

AICIS Status: Formulations where all components AIC listed.

## 16. OTHER INFORMATION

Reason for issue: Format change

Product Name: BLUE 250 WATER PIGMENT PACK

Reference No: LWP0101

Issued: 2021-03-23

Version: 3.4

Page 6 of 7

# Safety Data Sheet



This Safety Data Sheet has been prepared by Chemical Data Services Pty Ltd ([chemdata.com.au](http://chemdata.com.au)) on behalf of its client.

This information was prepared in good faith from the best information available at the time of issue. It is based on the present level of research and to this extent we believe it is accurate. However, no guarantee of accuracy is made or implied and since conditions of use are beyond our control, all information relevant to usage is offered without warranty. The manufacturer will not be held responsible for any unauthorised use of this information or for any modified or altered versions.

If you are an employer it is your duty to tell your employees, and any others that may be affected, of any hazards described in this sheet and of any precautions that should be taken.

Safety Data Sheets are updated frequently. Please ensure you have a current copy.

## Appendices 7.2

### Tanalith Ti (Imidacloprid) Technical Data Sheet

Reference AS 1604.1-2021 Hazard Class H2F Table 3.3 (B)



### Product Description

Tanalith® Ti Insecticide is an industrial use formulation for protection of timber against insect pests such as borers and termites. This product is approved for use in registered pressure treatment facilities, dip baths or spray units and is suitable for treatment of softwood and hardwood timbers to Hazard Level H2(F) below the Tropic of Capricorn as defined in AS1604.

### Performance

- Tanalith® Ti Insecticide has been approved by APVMA as an industrial use wood preservative.
- Tanalith® Ti Insecticide contains imidacloprid, a neonicotinoid widely recognized for its insecticide properties, providing protection against termites and other insects.

### Major Properties of Concentrate

#### Composition

30 g/L Imidacloprid.

#### Appearance

Creamy white liquid.

#### Mixing

Suspended concentrate, which forms a stable solution when mixed with water.

#### Density

Approx. 1.012 g/mL @ 20°C.

#### pH

7 to 8.

#### Flammability

N/A

#### Packaging

20L drums.  
200L drums.  
1000L IBC.

#### Storage

Store in the original, tightly closed container in a secure well ventilated area away from exposure to direct sunlight.

#### Shelf life

12 months when stored at +5°C to +25°C.

### Directions for Use

#### Preparation of the Treatment Solution

Tanalith® Ti Insecticide must only be used in approved timber treatment facilities that have been designed for its use.

Tanalith® Ti Insecticide solution is prepared by diluting in water at the required solution strength. The strength of Tanalith® Ti Insecticide treatment solution will depend on the treatment process being used and the timber commodities being treated. Consult our local technical representative for further details. Recirculation or mixing is highly recommended before using the solution and continually during use.

The diluted solution should be used within 3 months.

#### Special Additives: Colour

Tanalith® Ti Insecticide can be tinted with colour additives. Colour additives can give the timber a better appearance as well as provide a differentiation against untreated timber or other treatments. Colour additives are not intended to provide long term colour fastness nor are they a substitute for painting or staining.

#### Special Additives: Bacteria/Mould Control

Depending on climatic conditions, the treating solution may become contaminated with bacteria/mould from infected timber and spread this bacteria/mould to other packs. Excessive contamination may also affect the preservative solution stability so it is recommended that treating solutions that are being used on infected timber or might be left unused for longer than a week, be protected with anti-fungal additive. Additive type and dose rates are dependent upon individual circumstances.

#### Special Additives: Antifoam

Use of antimould additive in the treatment solutions is strongly recommended. For plants with very rapid rates of solution transfer additional anti-foam agent may need to be added directly to the solutions.

#### Preparation of Timber

Timber to be treated should be clean, dry and free of decay and insect attack. Softwood (pine) or hardwood should be either air or kiln dried to less than 16% moisture content, prior to treatment.

Consult our local technical representative for specific advice in these cases and for the treatment of other species.

## Application

The treatment process used will depend on the timber species and sizes of the boards being treated. Our local technical representative can advise details of suitable treatment schedules upon consultation with treatment plant management. Plant operation training can also be provided.

## Quality Control

At present there is no simple in-plant test for solution quality control. Solution and treated timber samples should be sent periodically to a laboratory for confirmation of active constituent concentration.

## Storage of Treated Timber

Tanalith® Ti Insecticide treated timber should be virtually surface dry and drip-free shortly after treatment. Immediately after treatment, the timber should be stored on a sealed under cover area with good air circulation. Depending on conditions, strip stacked timber should be fully dry of within a few days of treatment. Block stacked timber may remain 'wet' considerably longer, particularly inner boards.

It is generally recommended that treated timber be held for at least 2 days before dispatch.

## Handling Treated Timber

Timber treated with Tanalith® Ti Insecticide diluted solution once dry after treatment can be handled as normal untreated timber. Tanalith® Ti Insecticide does not affect the strength, moisture content, dimensional stability, corrosion potential or the flammability of the timber. The treatment may temporarily leave the timber with slight residual odour but this should not be a problem in normal circumstances.

## Gluing

Gluing and fixing of the timber can be done once the product has dried. Light sanding of the surfaces to be glued may improve adhesion.

Refer to the paint manufacturer for specific instructions.

## Cutting and Sawing

Rip sawing should not be undertaken unless the timber is returned for re-treatment.

## Priming and Painting

Painting of the timber can be done once the product has dried. Light sanding of the surfaces to be painted may improve adhesion.

Refer to the paint manufacturer for specific instructions.

## Other Recommendations

Use of antimould additive in the treatment solutions is strongly recommended. For plants with very rapid rates of solution transfer additional anti-foam agent may need to be added directly to the solutions.

## Health & Safety Aspects

Timber treated with Tanalith® Ti Insecticide should not be used for cooking. Off cuts and waste treated timber should be disposed through normal waste collection services

Wood preservatives are required to be approved for use by Australian Pesticides and Veterinary Medicines Authority, (APVMA), before the product can be placed on the market. As with all biocides such as wood preservatives, risks will be created if the correct precautions and safe working practices are not followed. These are detailed in the appropriate Safety Data Sheets covering the product and the treated timber.

## Environmental Aspects

### MANAGEMENT OF LIQUIDS, SLUDGE OR WASTE:

DO NOT allow spilled product or mixed solution to enter drains, streams, rivers or waterways.

If there is a spill, remove sources of ignition and move people from the immediate area. Confine the area of the spill with absorbent material such as sawdust or sand. Remove contaminated materials to appropriate containers for proper disposal.

Sawdust and shavings from the treated wood or filtered from treatment solutions should be disposed of according to local and state guidelines. Burning timber waste or sawdust treated with this product in industrial facilities may require specific consents. Do not burn offcuts and waste in domestic fires or barbecues.

### Plant and Equipment

Tanalith® Ti Insecticide must only be used in approved timber treatment facilities that have been designed for its use.

The requirements for a particular plant will depend upon the quantities and types of timber commodities to be treated, the degree of automation desired and local authority requirements for environmental protection. The following is recommended as necessary or highly desirable attributes in any plant design.

- The plant should comply with AS2843.
  - If solvents are being used, the plant should comply with relevant legislation and standards controlling the storage and use of flammable and combustible liquids (ie. AS1940).
  - The treatment, drip pad and timber storage areas should be fully covered and sealed.
  - Secure facility for preservative receipt and storage.
  - An automated PLC controlled plant is recommended.
- Full details of plant equipment options, benefits and costs can be obtained from our local technical representative.

## Caution

### Corrosivity of treatment plant fittings

N/A

### Compatibility with other products

Do not mix any other chemicals with Tanalith® Ti Insecticide without first consulting our local technical representative.

## Further Information

For further information refer Product Safety Data Sheet and APVMA approved label for further information.

## Regulatory Status

APVMA Approval #: 65525



Suites 15-18 at 1-11 Elgar Road,

3026 Derrimut, Australia

T: +61 1300 650 636

E: [tanalised-information.oceania@lonza.com](mailto:tanalised-information.oceania@lonza.com)

[www.arxadawoodprotection.com/apac](http://www.arxadawoodprotection.com/apac)

**Use wood preservatives safely. Always read the label and product information before use.**

All product information corresponds to Arxada's knowledge on the subject at the date of publication, but Arxada makes no warranty as to its accuracy or completeness and Arxada assumes no obligation to update it. Product information is intended for use by recipients experienced and knowledgeable in the field, who are capable of and responsible for independently determining the suitability of ingredients for intended uses and to ensure their compliance with applicable law. Proper use of this information is the sole responsibility of the recipient.

This information relates solely to the product as an industrially applied, high pressure wood preservative. It may not be applicable, complete or suitable for the recipient's finished product or application; therefore republication of such information or related statements is prohibited. Information provided by Arxada is not intended and should not be construed as a license to operate under or a recommendation to infringe any patent or other intellectual property right. No claims are made herein for any specific intermediate or end-use application. All trademarks belong to Arxada or its affiliates or to their respective third parties and are used here only for informational purposes.

© 2022 Arxada

**Table 3.3(A) — Minimum preservative retention in the penetration zone — Hazard class H2 — General**

(Individual piece; percent mass/mass based on the oven-dried mass of the test specimen)

Copper chromium arsenic (Cu + Cr + As)	Copper quat (Cu + DDAX)	Copper azole (Cu + Az)	Boron compounds (elemental boron) <sup>a</sup>	Permethrin	Cypermethrin	Deltamethrin	Bifenthrin
0.320	0.350	0.229	0.350	0.020	0.030	0.0020	0.0047 <sup>b</sup> 0.0042 <sup>c</sup> 0.0008 <sup>d</sup>

<sup>a</sup> For sawn and round timber only for use *south* of the Tropic of Capricorn only (see [Clause 1.5.3.3.2](#)).

<sup>b</sup> For sawn and round timber and glued laminated timber products only.

<sup>c</sup> For veneer and envelope treatments of plywood and LVL only.

<sup>d</sup> For veneer and envelope treatment of plywood and LVL used *south* of the Tropic of Capricorn.

**Table 3.3(B) — Minimum preservative retention in the penetration zone — Hazard class H2 F for sawn timber**

(Individual piece; percent mass/mass based on the oven-dried mass of the test specimen)

Preservative	Permethrin <sup>a</sup>	Bifenthrin <sup>b</sup>	Imidacloprid <sup>c</sup>
Penetration zone <sup>d</sup>	5 mm	2 mm	2 mm
Retention in penetration zone	0.020	0.020	0.0078

<sup>a</sup> Preservative No. 74 (see [Table E.1, Appendix E](#)), for softwood only.

<sup>b</sup> Preservative No. 75 (see [Table E.1, Appendix E](#)).

<sup>c</sup> Preservative No. 60 (see [Table E.1, Appendix E](#)), for softwood only.

<sup>d</sup> Penetrated from each surface, excluding ends.

NOTE See also [Clause 1.5.3.3.2](#).

## Appendices 7.3

### Environmental Fate of Imidacloprid

## Environmental fate & toxicology of Imidacloprid

### Environmental fate of Imidacloprid:

- Imidacloprid in laboratory soil studies with no exposure to light has a half-life of 156 days.\*
- Imidacloprid in laboratory soil studies with simulated sunlight has a half life of 39 days.\*
- Field studies have shown the half-life of Imidacloprid varies between 7 and 146 days. The rate of degradation is dependent on factors such as sunlight, soil type, soil moisture, soil use, temperature, microbial activity etc.
- Imidacloprid is completely degradable in soil and will not persist (does not bio accumulate).\*
- Translocation of imidacloprid from soil is negligible under normal conditions. It binds tightly and is not readily released from the soil particles.
- Imidacloprid does not persist in aqueous environments. In outdoor ponds, the half life was found to be 5.7 days and in anaerobic dark conditions the half life was 27 days.\*
- When administered orally to rats, 96% of the radioactivity of <sup>14</sup>C labelled imidacloprid was eliminated within 48 hours of admission. It was eliminated via the urine and faeces.\*\*
- Imidacloprid is very thoroughly metabolised in rats with only around 15% of the original dose being excreted as the parent material.\*\*

### Toxicology of imidacloprid:

- The acute oral LD<sub>50</sub> rats of Permatek IM 30 is >10,000mg/kg (c/w table salt at ~3000mg/kg). Imidacloprid active is ~450mg/kg.\*\*
- Imidacloprid is non irritating to eyes.\*\*
- Imidacloprid is not a skin sensitiser.\*\*
- Imidacloprid is not mutagenic or teratogenic.\*\*

\* Dr. Maria Esters (ed), Environmental fate of imidacloprid, 2002: Bayer Crop Science, Leverkusen.

\*\* CDS Tomlin (ed), The Pesticide Manual, Fifteen Edition, 2009: British Crop Production Council, Hampshire.

Appendices 7.4

Tanalith Ti (Imidacloprid) APVMA Label

*Text appearing above this line does not form part of the label*

# POISON

KEEP OUT OF REACH OF CHILDREN  
READ SAFETY DIRECTIONS BEFORE OPENING OR USING

## TANALITH<sup>®</sup> Ti INSECTICIDE

ACTIVE CONSTITUENT: 30 g/L IMIDACLOPRID

For the control of termites in engineered wood, reconstituted board  
and softwood dimensional timber products.

Net Contents: 20L, 200L, 1000L

APVMA APPROVAL No: 65525/51121



Distributed by  
Arch Wood Protection Australia Pty Ltd  
Station Street  
Trentham Vic 3458  
Phone: (03) 5424 1350



Tanalith is a registered trademark of  
Arch Wood Protection Australia Pty Ltd.



Text appearing above this line does not form part of the label

**DIRECTIONS FOR USE:**

SITUATION	PEST	STATE	RATE	CRITICAL COMMENTS
Treatment of softwood veneers prior to gluing to form plywood or LVL for use in Hazard Class H2	All termites excluding <i>Mastotermes darwinienis</i>	All areas south of the Tropic of Capricorn	670 ml/m <sup>3</sup> dry veneer to achieve AS/NZS 1604 minimum retention	<ol style="list-style-type: none"> <li>The uptake of solution should be determined for the veneers to be treated.</li> <li>Dilute the Tanalith® TI as required to ensure that the loading in the veneers will be adequate to ensure retention to meet AS/NZS 1604 after manufacture.</li> <li>In spray applications, do not use pressures above 200 kPa to maximise droplet size and minimise aerosol effect.</li> <li>Contact Arch Wood Protection Australia Pty Ltd for further assistance.</li> </ol>
Glueline treatment for softwood laminated veneer products (plywood or LVL) for use in Hazard Class H2 with a maximum veneer thickness of 3.2mm	All termites excluding <i>Mastotermes darwinienis</i>	All areas south of the Tropic of Capricorn	670 - 1500 ml/m <sup>3</sup> dry veneer to achieve AS/NZS 1604 minimum retention	<ol style="list-style-type: none"> <li>Calculate the glue usage per cubic metre of finished product.</li> <li>Dilute the Tanalith® TI into the glue as required to ensure a minimum retention of 0.0006% imidacloprid m/m as required in AS/NZS 1604.3 and 1604.4 which is based on the ELISA analytical procedure as described in Section 18 of AS/NZS 1605.3.</li> <li>When treating via glueline addition, the maximum thickness of any veneer in the product should not exceed 3.2mm.</li> <li>Contact Arch Wood Protection Australia Pty Ltd for further assistance.</li> </ol>
Treatment of reconstituted board products in Hazard Class H2 - Treated during manufacture	All termites excluding <i>Mastotermes darwinienis</i>	All areas south of the Tropic of Capricorn	Apply to achieve 670 ml/m <sup>3</sup> of finished board to achieve AS/NZS 1604 minimum retention	<ol style="list-style-type: none"> <li>Apply the Tanalith® TI via the glue or directly onto the furnish as required to ensure a minimum retention of 0.0009% m/m imidacloprid based on the ELISA analytical procedure as described in AS/NZS 1605.3.</li> <li>Contact Arch Wood Protection Australia Pty Ltd for further assistance.</li> </ol>
Glueline treatment for softwood laminated veneer products (plywood or LVL) for use in Hazard Class H2 with a veneer thickness of greater than 3.2mm and a maximum of 4.3mm	All termites excluding <i>Mastotermes darwinienis</i>	All areas south of the Tropic of Capricorn	1000 - 2000 ml/m <sup>3</sup> dry veneer to achieve AS/NZS 1604 minimum retention	<ol style="list-style-type: none"> <li>Calculate the glue usage per cubic metre of finished product.</li> <li>Dilute the Tanalith® TI into the glue as required to ensure a minimum retention of 0.0027% imidacloprid m/m as required in AS/NZS 1604.3 and 1604.4 which is based on the ELISA analytical procedure as described in Section 18 of AS/NZS 1605.3.</li> <li>When treating via glueline, the maximum thickness of any veneer in the product should not exceed 4.3mm.</li> <li>Contact Arch Wood Protection Australia Pty Ltd for further assistance.</li> </ol>
Treatment of reconstituted board products in Hazard class H2 - Treated after manufacture Maximum board thickness of 12.5mm	All termites excluding <i>Mastotermes darwinienis</i>	All areas south of the Tropic of Capricorn	2.1 - 4.2 ml/m <sup>2</sup> of finished board	<ol style="list-style-type: none"> <li>The uptake of the treating solution should be determined for the wood product to be treated by the treating method to be used.</li> <li>Dilute the Tanalith® TI as required and treat via spray, dip, roller etc. ensuring a minimum retention of 0.00365% m/m imidacloprid in the outer 2mm of any face based on the ELISA analytical procedure as described in AS/NZS 1605.3.</li> <li>When treating finished board products, the maximum board thickness will be 12.5mm and the Tanalith® TI must be shown to have penetrated at least 2mm from any face. An adjuvant aid may be required to aid penetration of the treating solution. The treated board product must not be permanently exposed to sunlight.</li> <li>Contact Arch Wood Protection Australia Pty Ltd for further assistance.</li> </ol>
Envelope treatment of softwood dimensional timber in Hazard Class H2 Maximum timber dimension is 140 x 45mm	All termites excluding <i>Mastotermes darwinienis</i>	All areas south of the Tropic of Capricorn	5.7 - 11.4 ml/m <sup>2</sup> of dimensional timber	<ol style="list-style-type: none"> <li>The uptake of the treating solution should be determined for the dimensional timber to be treated by the treating method to be used.</li> <li>Dilute the Tanalith® TI as required and treat via spray, dip, roller etc. ensuring a minimum retention of 0.0078% m/m imidacloprid in the outer 2mm of any face based on the HPLC analytical method as described in AS/NZS 1605.3.</li> <li>When treating dimensional timber, the maximum timber dimensions will be 140 x 45mm (in the cross section) and the Tanalith® TI must be shown to have penetrated at least 2mm from any face. An adjuvant may be required to aid penetration of the treating solution. The treated timber must not be permanently exposed to sunlight.</li> <li>In spray applications, do not use pressures above 200 kPa to maximise droplet size and minimise the aerosol effect.</li> <li>Contact Arch Wood Protection Australia Pty Ltd for further assistance.</li> </ol>

**NOT TO BE USED FOR ANY PURPOSE OR IN ANY MANNER, CONTRARY TO THIS LABEL UNLESS AUTHORISED UNDER APPROPRIATE LEGISLATION**

*Text appearing above this line does not form part of the label*

---

**GENERAL INSTRUCTIONS:**

Arch Wood Protection Australia Pty Ltd recommends that glue compatibility be tested prior to using Tanalith® Ti. Contact Arch Wood Protection Australia Pty Ltd for more information.

**PRECAUTION:**

Treated timber must not come into contact with foodstuffs, e.g. use in packaging cases or places where food is prepared or stored. **DO NOT** spray directly on exposed food, utensils or food preparation surfaces.

**PROTECTION OF WILDLIFE, FISH, CRUSTACEANS AND ENVIRONMENT:**

Harmful to fish. **DO NOT** contaminate ponds, waterways or ditches with chemicals or used containers. Harmful to bees.

**STORAGE AND DISPOSAL:**

Store in the closed, original container in a safe, shaded and well-ventilated area. Avoid storage in extreme hot or cold temperature. Triple rinse containers before disposal. Add rinsings to holding tank. **DO NOT** dispose of undiluted chemicals on-site. If recycling, replace cap and return clean containers to recycler or designated collection point. If not recycling, break, crush or puncture and deliver to an approved waste management facility. If an approved waste management facility is not available bury the empty packaging 500mm below the surface in a disposal pit specifically marked and set up for this purpose clear of waterways, desirable vegetation and tree roots, in compliance with relevant Local, State or Territory Government regulations. **DO NOT** burn empty containers or product.

**SAFETY DIRECTIONS:**

May irritate the eyes. Avoid contact with the eyes. Product may be harmful if swallowed. Work in a well-ventilated area. Wear eye protection and gloves when handling the product. After use and before eating, drinking or smoking wash hands. When surface spraying with Tanalith® Ti avoid breathing vapours. Ensure that the spray unit is correctly maintained and that an effective mist extraction system is used. Contact Arch Wood Protection Australia Pty Ltd for advice on suitable procedures.

**FIRST AID:**

If poisoning occurs, contact a doctor or Poisons Information Centre. Phone: Australia 131126.

**MATERIAL SAFETY DATA SHEET:**

Additional information is listed in the material safety data sheet available from Arch Wood Protection Australia Pty Ltd.

**EXCLUSION OF LIABILITY:**

This product as supplied is of a high grade and suitable for the purpose for which it is expressly intended and must be in accordance with the directions. The user must monitor the performance of any product as climatic, geographical or biological variable and/or developed resistance may effect the results obtained. No responsibility is accepted in respect of this product, save for those non-excludable conditions implied by the Trade Practices Act or any State legislation.

**BATCH NUMBER:**

**DATE OF MANUFACTURE:**

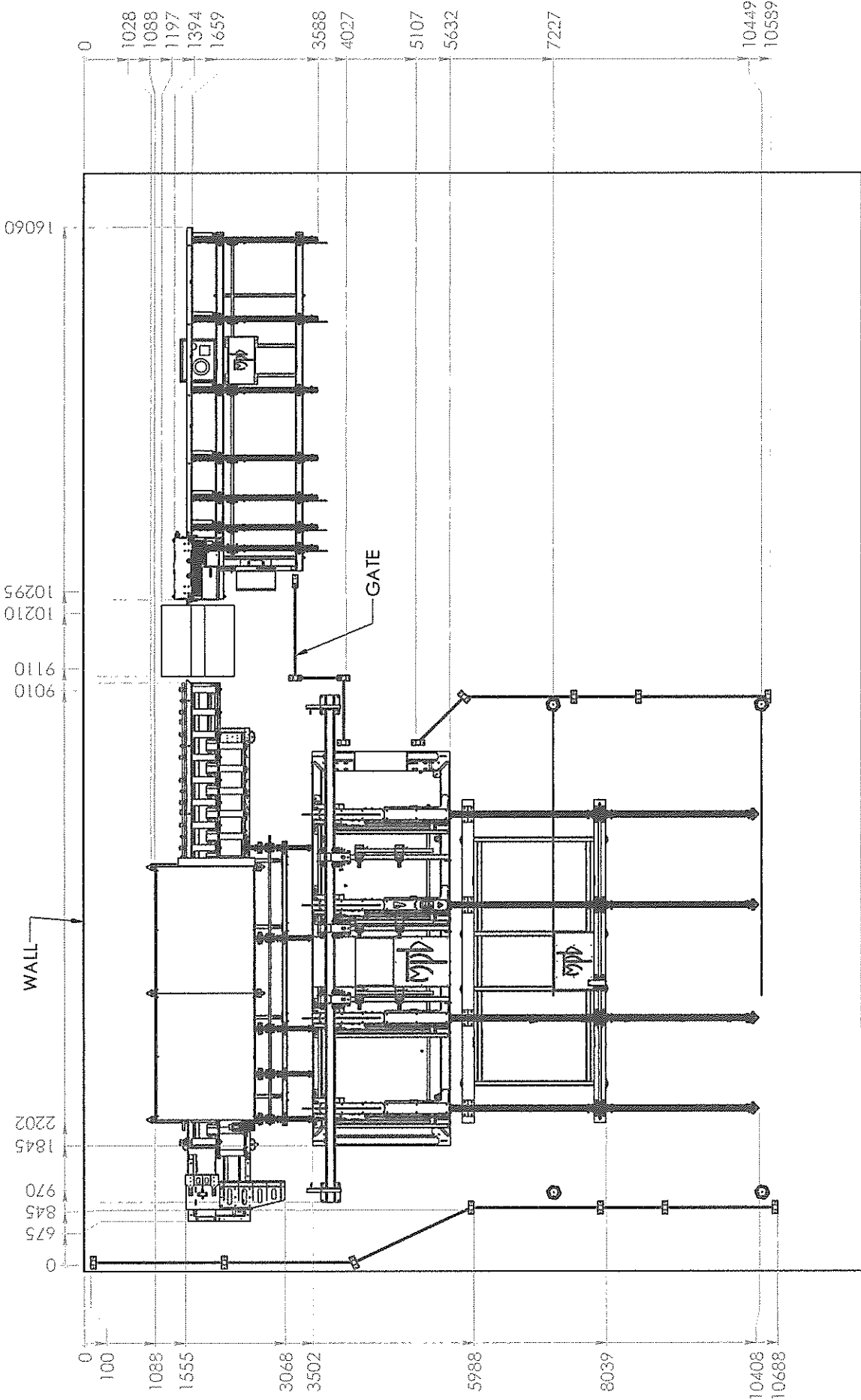
APVMA Approval No: 65525/51121



## Appendices 7.5

### Drawings

- Preliminary Spray Unit Layout
- GA Spray Unit



www.mpbengineering.com.au - design@mpbengineering.com.au



**MPB ENGINEERING**  
 63-75 VILLAS ROAD,  
 DANDENONG STH, VICTORIA,  
 AUSTRALIA 3178  
 PH: (613) 9022 7933

**Arxada Blueing Line**  
 General Assembly

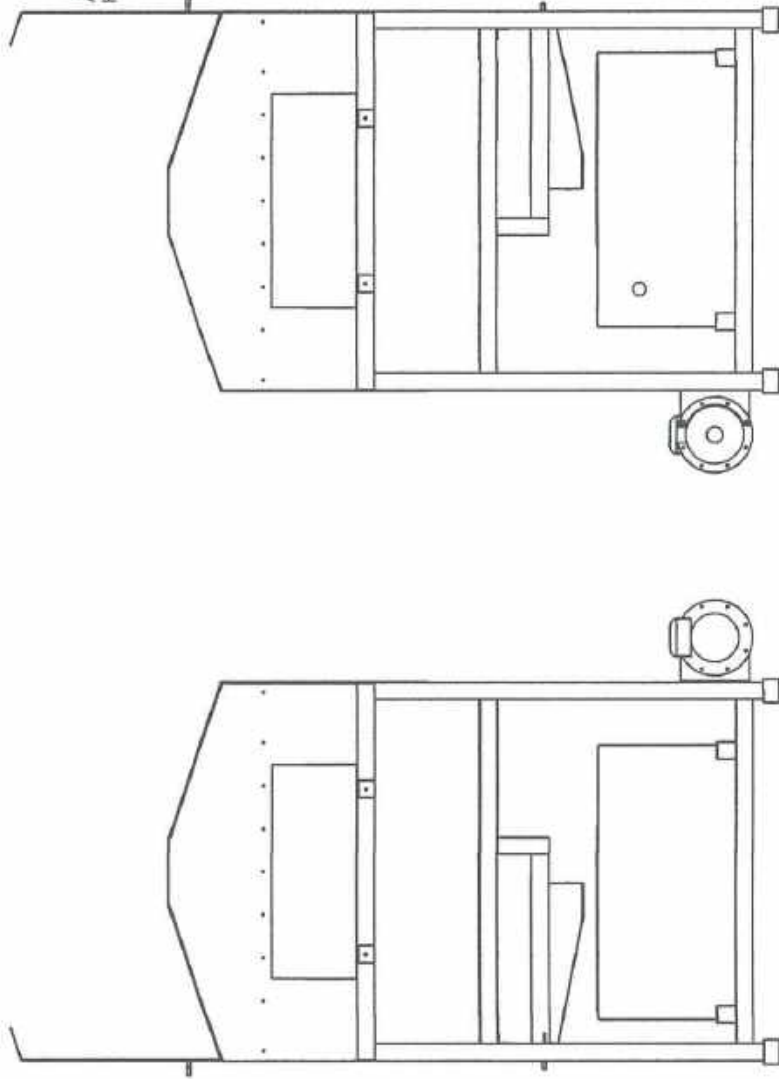
UNLESS OTHERWISE SPECIFIED  
 TOLERANCES:  
 LINEAR 0.10mm  
 HOLE NOS. 1-6 0.10mm  
 HOLE NOS. 7-10 0.15mm  
 ANGULAR 0.5°

DO NOT SCALE DRAWING

NAME DATE QTY  
 DRAWN AKASH 22/05/2025  
 REV A

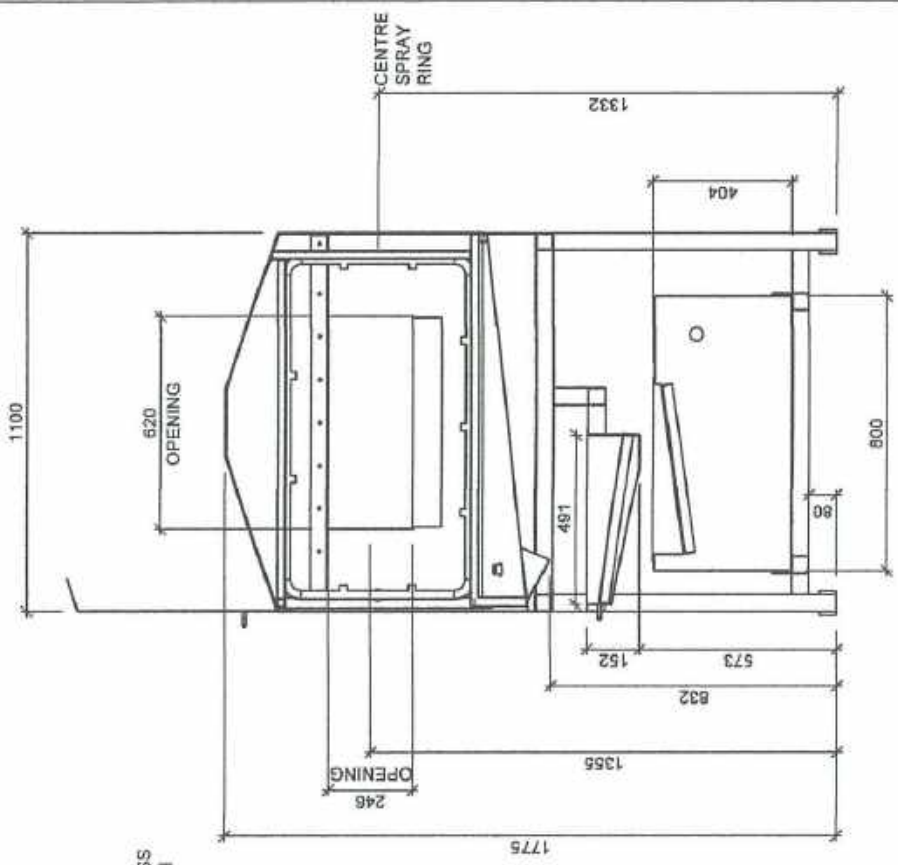
FINISH

WEIGHT 100.0005W-Mass@General Assembly@Arxada Blueing Line GA.dwg



ELEVATION INFEED

ELEVATION OUTFEED



SECTION

Index	Author	Date	Description

ASSEMBLY DRAWING

Project : LONGITUDINAL SPRAY  
 N° :  
 Status :  
 Date : 8/07/2025

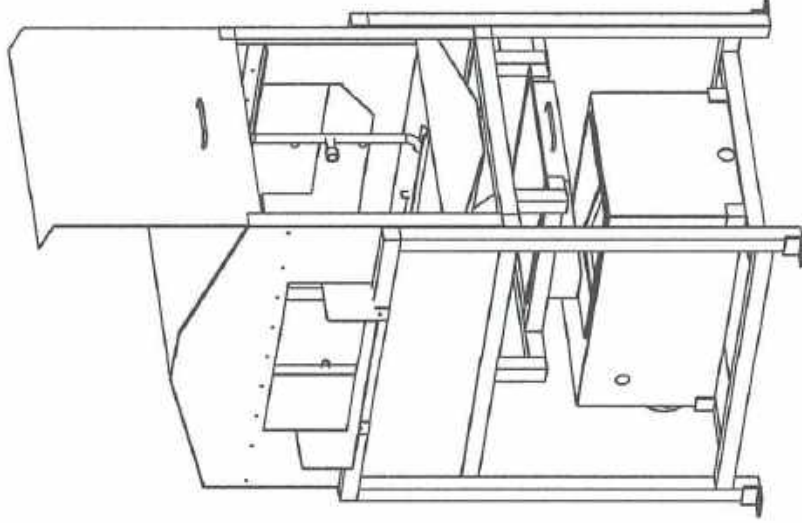
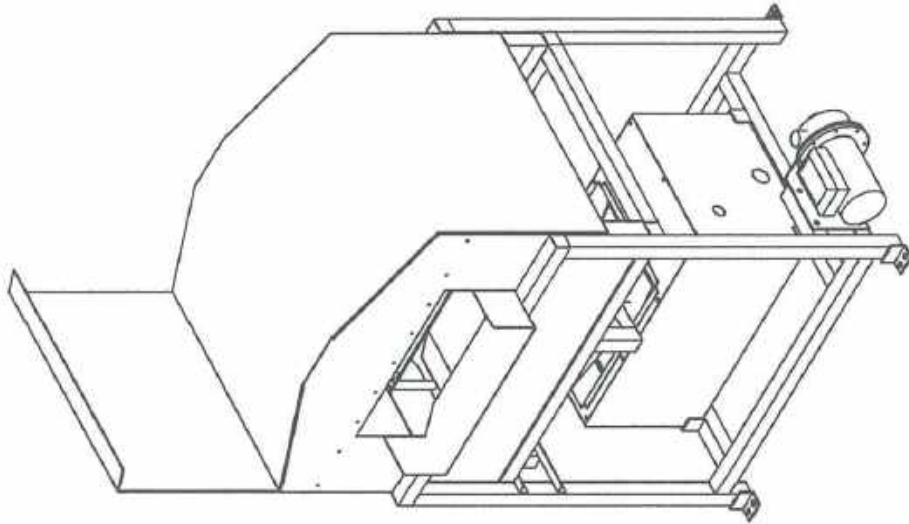
Scale : 1:15  
 Detailer : Warwick  
 Revision Date  
 Index

Pos Num : GA 2  
 Material : S304



Arch Wood Protection NZ Ltd.

Comment :  
 Client : LONZA



Index	Author	Date	Description

**ASSEMBLY DRAWING**

Project : LONGITUDINAL SPRAY  
 N° :

Pos Num : **GA 3**

Scale : 1:15  
 Detailer : Warwick

Status :  
 Date : 8/07/2025  
 Comment :  
 Client : LONZA

Material : S304

Index  
 A



Arch Wood Protection NZ Ltd.

## Appendices 7.6

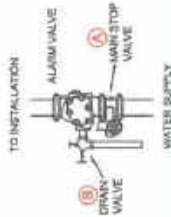
- Fire Sprinkler System
- Hydrant Ring Locations
- Hose Reel & Extinguisher Locations
  - Service Reports

# SPRINKLER SYSTEM BLOCK PLAN

18 & 26 WELLARD STREET, BIBRA LAKE, WA

## EMERGENCY INSTRUCTIONS

1. CALL FIRE BRIGADE '000'
2. MAKE SURE FIRE IS OUT
3. CLOSE MAIN STOP VALVE 'A'
4. OPEN MAIN DRAIN VALVE 'B'
5. RE-MAIN AT VALVES
6. IF FIRE RE-OCCURS:  
CLOSE DRAIN VALVE 'B' and  
RE-OPEN MAIN STOP VALVE 'A'



- LEGEND**
- HILLER CONTROL VALVE
  - ISOLATION VALVE (MONITORED)
  - CHECK VALVE
  - REMOTE TEST POINT
  - FIRE BRIGADE SUCTION OR BOOSTER
  - FIRE INDICATOR PANEL
  - SUB FIRE INDICATOR PANEL
  - SPRINKLER PROTECTED AREA

### SPRINKLER BOOSTER PUMP INFORMATION

PUMP DUTIES:  
11000 L/min @ 1200 kPa EA.  
SPRINKLER TANK INFORMATION:  
EFFECTIVE CAPACITY:  
840 L EA.  
13.37m DA

**HAZARD CLASSIFICATIONS**  
WAREHOUSE MAIN ROOF: STORAGE SPRINKLER SYSTEM  
12 X 103.3 METRIC (K25.2 MP) @ 410kPa  
WAREHOUSE 101 CANOPY: STORAGE SPRINKLER SYSTEM  
12 X 103.3 METRIC (K25.2 MP) @ 410kPa  
WAREHOUSE 100 CANOPY: ORDINARY HAZARD 3  
18 X 18.3 METRIC (K5.6 MP) @ 60 L/min EA.  
OFFICES: LIGHT HAZARD  
9 X 18 METRIC @ 70 kPa EA.

### SPRINKLER PRESSURE & FLOW REQUIREMENTS @ PUMP DISCHARGE

WAREHOUSE 100: 8974 L/min @ 1155 kPa  
WAREHOUSE 101: 8974 L/min @ 1149 kPa  
TM WAREHOUSE: 8975 L/min @ 1127 kPa

### GENERAL SYSTEM INFORMATION

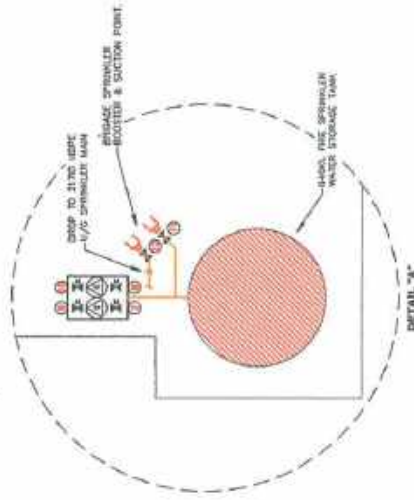
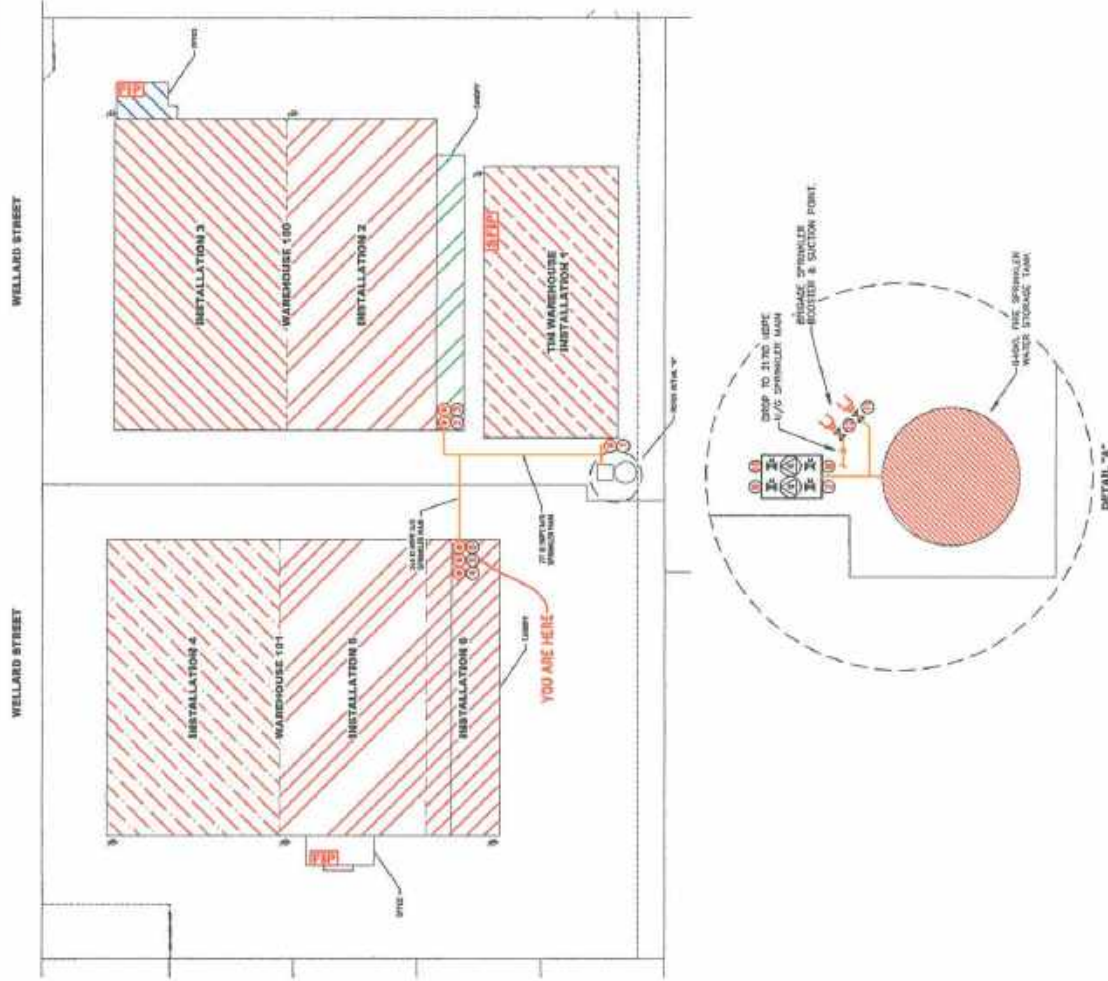
REFER ASSEMBLY FOR PERMITTED COMMODITY STORAGE WITHIN WAREHOUSE.  
NOTE THIS SPRINKLER SYSTEM MAY NOT BE SUITABLE FOR A HIGHER RISK COMMODITY CLASSIFICATION  
HIGHEST SPRINKLER HEAD: 9m  
SPACE SPRINKLERS LOCATED AT VALVES  
SYSTEM CONNECTED TO AFD 100 MONITORING  
YEAR OF INSTALLATION: APRIL 2022

### PRESSURE GAUGE SCHEDULE

INSTALLATION PRESSURE:  
1200 kPa  
1000 kPa  
BELOW STOP VALVE:  
1100 kPa  
PRIMARY PUMP PRESSURE AT NO FLOW:  
1100 kPa  
SECONDARY PUMP PRESSURE AT NO FLOW:  
800 kPa  
PRIMARY PUMP START PRESSURE:  
550 kPa  
SECONDARY PUMP START PRESSURE:  
500 kPa  
-CUT IN:  
500 kPa  
-CUT OUT:  
1000 kPa

### ISOLATION VALVE SCHEDULE

- ① 1500 STOP VALVE (MONITORED) CONTROL ASSEMBLY 1
- ② 2000 STOP VALVE (MONITORED) CONTROL ASSEMBLY 2
- ③ 2000 STOP VALVE (MONITORED) CONTROL ASSEMBLY 3
- ④ 2000 STOP VALVE (MONITORED) CONTROL ASSEMBLY 4
- ⑤ 2000 STOP VALVE (MONITORED) CONTROL ASSEMBLY 5
- ⑥ 2000 STOP VALVE (MONITORED) CONTROL ASSEMBLY 6
- ⑦ 2500 STOP VALVE (MONITORED) PUMP SUCTION
- ⑧ 2500 STOP VALVE (MONITORED) PUMP SUCTION
- ⑨ 2500 STOP VALVE (MONITORED) PUMP DISCHARGE
- ⑩ 1500 STOP VALVE (MONITORED) PUMP DISCHARGE
- ⑪ 1500 STOP VALVE BRIGADE SUCTION
- ⑫ 1500 STOP VALVE BRIGADE BOOSTER



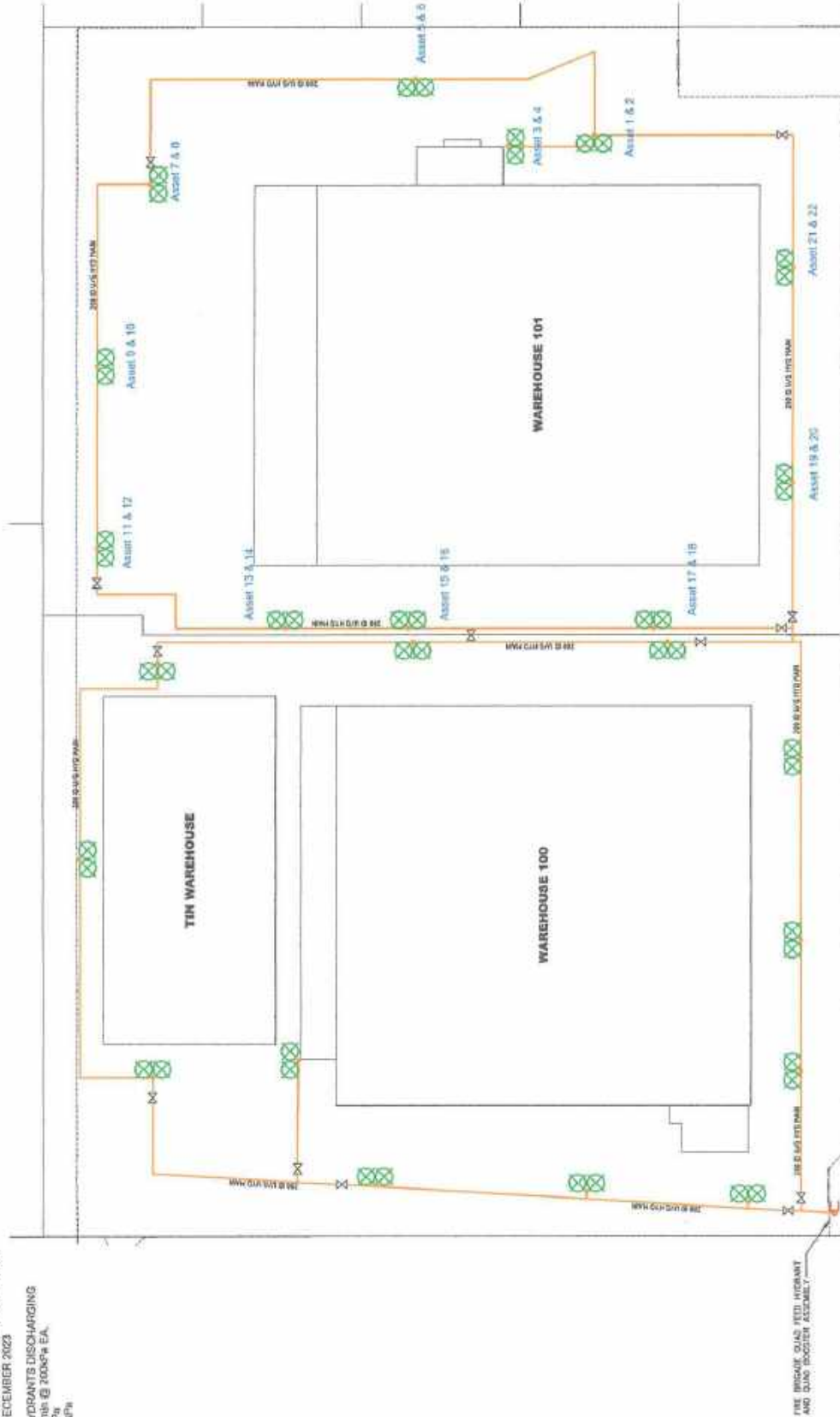
**HYDRANT SYSTEM BLOCK PLAN**  
 18 & 26 WELLARD STREET, BIBRA LAKE, WA



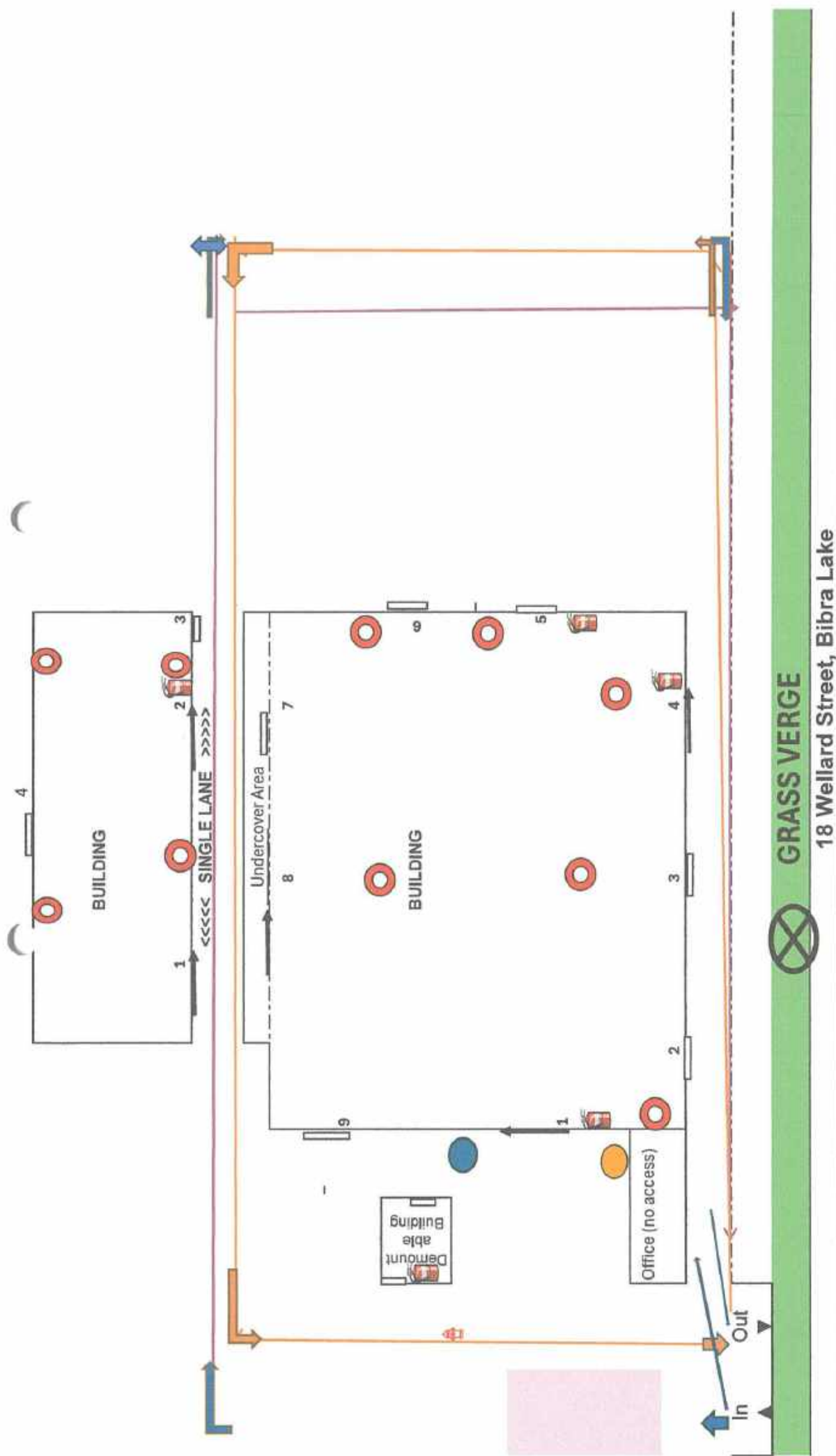
**GENERAL SYSTEM INFORMATION**

HYDRANT SYSTEM DESIGNED TO: AS/NZS 1869 - 2005  
 TOTAL NUMBER OF HYDRANTS: 46  
 HEIGHT OF HIGHEST HYDRANT: 1m  
 TIN WAREHOUSE & WAREHOUSE 100 YEAR OF INSTALLATION: APRIL 2022  
 WAREHOUSE 101 YEAR OF INSTALLATION: DECEMBER 2023

EXTERNAL ATTACK HYDRANTS: 3 X HYDRANTS DISCHARGING  
 500 L/min @ 200kPa EA.  
 HYDRANT WORKING PRESSURE: 800 kPa  
 HYDRANT TEST PRESSURE: 1100 kPa







**GRASS VERGE**  
 18 Wellard Street, Bibra Lake

**Legend:**

	Car Park		Fire Extinguisher
	Muster Point		Gas Tanks
	Water Tank		Hose Reel
	Outdoor Fire Hose		Door
	Sliding Door		

(33.2% share)

### Scope of Works

- 06 - Fire Detection Systems - FIP (2012): Monthly (1)
- 03 - Fire Pumpsets - (Hose Reel & Jacking Pump) (2012): Monthly (2)
- 02 - Fire Sprinkler System - Wet Pipe (2012): Monthly (4)
- 03 - Fire Pumpsets - (Diesel and Electric) (2012): Monthly (2)
- 05 - Water Storage Tanks for Fire Protection Systems (2012): Monthly (1)

0	<b>Critical Defects</b>	A defect that renders a system inoperative.
3	<b>Non-critical Defects</b>	A system impairment not likely to critically affect the operation of the system.
4	<b>Non-conformances</b>	Missing information or incorrect feature that does not affect the system operation.
4	<b>Recommendations</b>	A modification suggested to improve the system performance.
6	<b>Informational Notes</b>	Detailed advice or general comment.

### Servicing Summary

Service	Asset	Quantity
02 - Fire Sprinkler System - Wet Pipe (2012): Monthly	Fire Sprinkler System - Wet Pipe	4
03 - Fire Pumpsets - (Diesel and Electric) (2012): Monthly	Fire Pump - Diesel	2
03 - Fire Pumpsets - (Hose Reel & Jacking Pump) (2012): Monthly	Fire Pump - Jacking	2
05 - Water Storage Tanks for Fire Protection Systems (2012): Monthly	Water Storage Tank for Fire Protection System	1
06 - Fire Detection Systems - FIP (2012): Monthly	Fire Detection Systems - Panels	1

## Maintenance

### 02 - Fire Sprinkler System - Wet Pipe (2012): Monthly

AS1851-2012 (a1) - Routine service of fire protection systems and equipment

#### Asset

#### Status

004 - General System

Small wearhouse

PASS

#### Non-critical defect

ID: 19017 [🔗](#)

Added: 31st Mar 2025 10:37AM

Last Verified: 31st Mar 2025 10:38AM

#### Description:

Alarm gong is missing strainer

#### Resolution:

#### Location:

System 1



[Click photos to enlarge](#)

#### Informational

ID: 19016 [🔗](#)

Added: 31st Mar 2025 10:37AM

Last Verified: 11th Feb 2026 2:29PM

#### Description:

Test and waste valve is corroded

#### Resolution:

#### Location:

System 1



[Click photos to enlarge](#)

003 - General System

Inside Pump room

NO TEST

#### Recommendation

ID: 20329 [🔗](#)

Added: 16th Jun 2025 4:47PM

Last Verified: 11th Feb 2026 2:29PM

#### Description:

Drain line required, water goes inside the pump room when tested

#### Resolution:

3 - General System

Big Shed, Back side near pumps

PASS

**Asset**
**Status**
**Non-conformance**

ID: 19018

Added: 31st Mar 2025 10:38AM

Last Verified: 31st Mar 2025 10:40AM

**Description:**

Remote test drains are missing labels.

**Resolution:**
**Location:**

System 1, 2 and 3



Click photos to enlarge

**2 - General System**

Big Shed, Back side near pumps

**PASS**
**Non-critical defect**

ID: 19015

Added: 31st Mar 2025 10:36AM

Last Verified: 31st Mar 2025 10:36AM

**Description:**

Alarm gong is missing Strainer

**Resolution:**
**Location:**

System 2 + 3



Click photos to enlarge

**Non-conformance**

ID: 22255

Added: 25th Aug 2025 11:54AM

Last Verified: 11th Feb 2026 2:28PM

**Description:**

No signal received for both MSV.

**Resolution:**

Further investigation required

**03 - Fire Pumpsets - (Diesel and Electric) (2012): Monthly**

AS1851-2012 (a1) - Routine service of fire protection systems and equipment

**Asset**
**Status**
**2 - Diesel - Combined System Pump**

Stand by. Pump shed

**PASS**

**Asset**

**Status**

**Non-critical defect**

ID: 25977 [🔗](#)

Added: 11th Nov 2025 1PM

Last Verified: 22nd Jan 2026 10:16AM

**Description:**

Noticed a heavy leak from coolant line after the test, needs further attention.

**Resolution:**



[Click photos to enlarge](#)

**1 - Diesel - Combined System Pump**

Duty. Behind Small shed

**PASS**

**Recommendation**

ID: 29835 [🔗](#)

Added: 22nd Jan 2026 10:14AM

Last Verified: 11th Feb 2026 2:29PM

**Description:**

Heavy infestation of spiders inside the pump room. Had been cleaning webs, but it's getting worse each month. I'd recommend conducting pest control.

**Resolution:**



[Click photos to enlarge](#)

**Informational**

ID: 13883 [🔗](#)

Added: 19th Aug 2024 4:05PM

Last Verified: 11th Feb 2026 2:29PM

**Description:**

Exhaust flap is not dropping down after testing.

**Resolution:**



[Click photos to enlarge](#)

**03 - Fire Pumpsets - (Hose Reel & Jacking Pump) (2012): Monthly**

AS1851-2012 (a1) - Routine service of fire protection systems and equipment

**Asset**

**Status**

**1 - Jacking Pump - Automatic, Single Stage**

FIRE PUMP ROOM

**PASS**

**1 - Hose Reel Jacking Pump**

Ground, Left side of offices

**PASS**

**Recommendation** Added: 22nd Jan 2026 9:56AM  
ID: 29834 [🔗](#) Last Verified: 11th Feb 2026 2:30PM

**Description:**  
Clear bushes around the pump

**Resolution:**



[Click photos to enlarge](#)

**Recommendation** Added: 11th Nov 2025 12:04PM  
ID: 25975 [🔗](#) Last Verified: 11th Feb 2026 2:30PM

**Description:**  
Pump is getting damaged by weather, recommend to install a shade on top of it.

**Resolution:**



[Click photos to enlarge](#)

**Informational** Added: 22nd Jan 2026 9:56AM  
ID: 29833 [🔗](#) Last Verified: 11th Feb 2026 2:30PM

**Description:**  
Test valve is leaking

**Resolution:**



[Click photos to enlarge](#)

**Informational** Added: 20th Jun 2024 1:50PM  
ID: 12919 [🔗](#) Last Verified: 14th Oct 2025 9:42AM

**Description:**  
Valves need to be locked as two of them are temporarily locked by using cable ties. (See photos)

**Resolution:**



[Click photos to enlarge](#)

## 05 - Water Storage Tanks for Fire Protection Systems (2012): Monthly

AS1851-2012 (a1) - Routine service of fire protection systems and equipment

Asset	Status
1 - Water Storage Tank Behind Small shed	PASS

### Non-conformance

ID: 19069

Added: 3rd Apr 2025 1:02PM

Last Verified: 3rd Apr 2025 1:03PM

#### Description:

There is no signage at all for the sprinkler booster system. Or tank storz connection

#### Resolution:



Click photos to enlarge

### Non-conformance

ID: 19068

Added: 3rd Apr 2025 1:01PM

Last Verified: 3rd Apr 2025 1:03PM

#### Description:

Level indicator signs faded

#### Resolution:



Click photos to enlarge

### Informational

ID: 19070

Added: 3rd Apr 2025 1:03PM

Last Verified: 3rd Apr 2025 1:03PM

#### Description:

No evidence of yearly drain and clean

#### Resolution:



Click photos to enlarge

## 06 - Fire Detection Systems - FIP (2012): Monthly

AS1851-2012 (a1) - Routine service of fire protection systems and equipment

Asset	Status
1 - FUSION Axis 5000HC Fire Detection System Ground, Entrance	PASS

**Asset****Status**

Informational  
ID: 25976 [↗](#)

Added: 11th Nov 2025 12:07PM  
Last Verified: 11th Nov 2025 12:08PM

**Description:**

Large and small Warehouse detection is no longer connected to FIP.  
Sub Panel has been decommissioned and removed from small warehouse

**Resolution:**

[Click photos to enlarge](#)

**Logbooks**

-  **06 - Fire Detection Systems** [↗](#)  
Classic Logbook
-  **Duty Pump** [↗](#)  
Classic Logbook
-  **02 - Automatic fire sprinkler systems** [↗](#)  
Classic Logbook
-  **Standby Pump** [↗](#)  
Classic Logbook

**Signoff**

Maintenance has been carried out in accordance with current regulations.

Technician	Date/Time	Signature
Raheel Ahmed	11th Feb 2026 2:30PM	

**Company Accreditations:**

FPA Silver Member - 53284



(55.2% share)

**Scope of Works**

02 - Fire Sprinkler System - Wet Pipe (2012): Monthly (1)

0	<b>Critical Defects</b>	A defect that renders a system inoperative.
0	<b>Non-critical Defects</b>	A system impairment not likely to critically affect the operation of the system.
0	<b>Non-conformances</b>	Missing information or incorrect feature that does not affect the system operation.
0	<b>Recommendations</b>	A modification suggested to improve the system performance.
1	<b>Informational Notes</b>	Detailed advice or general comment.

**Servicing Summary**

Service	Asset	Quantity
02 - Fire Sprinkler System - Wet Pipe (2012): Monthly	Fire Sprinkler System - Wet Pipe	1

**Maintenance**

**02 - Fire Sprinkler System - Wet Pipe (2012): Monthly**

AS1851-2012 (a1) - Routine service of fire protection systems and equipment

Asset	Status
1 - General System BehindSmall shed	<b>PASS</b>

**Asset****Status**

Informational  
ID: 19262 

Added: 15th Apr 2025 11:47AM  
Last Verified: 11th Feb 2026 2:30PM

**Description:**

Test line pipework is corroded

**Resolution:**

[Click photos to enlarge](#)

**Signoff**

Maintenance has been carried out in accordance with current regulations.

**Technician****Date/Time****Signature**

Raheel Ahmed

11th Feb 2026 2:30PM

**Company Accreditations:**

FPA Silver Member - 53284

## Appendices 7.7

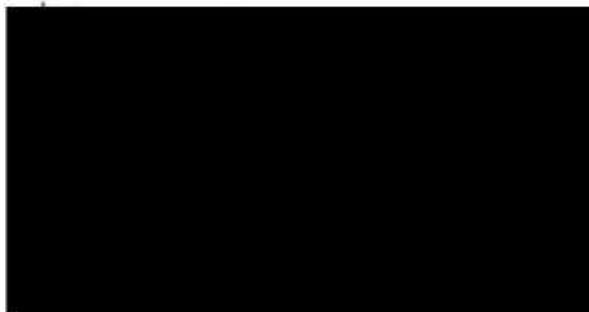
- Waste Disposal Contractors and WA DWER Licences
  - Waste Acceptance Statement



<b>Licence number</b>	L7639/2000/8	
<b>Licence holder</b>	Western Resource Recovery Pty Ltd	
<b>ACN</b>	099 144 180	
<b>Registered business address</b>	Level 4, Bay Centre 65 Pirrama Road PYRMONT NSW 2009	
<b>DWER file number</b>	2012/003338-1	
<b>Duration</b>	01/11/2015 to	31/10/2035
<b>Date of amendment</b>	14/08/2025	
<b>Premises details</b>	Western Resource Recovery 113 Ewing Street WELSHPOOL WA 6106  Legal description - Lot 278 on Plan 3033  As defined by the premises maps in Schedule 1	

Prescribed premises category description (Schedule 1, <i>Environmental Protection Regulations 1987</i> )	Assessed production / design capacity
Category 61: Liquid waste facility: premises on which liquid waste produced on other premises (other than sewage waste) is stored, reprocessed, treated, or irrigated.	100,000 tonnes per annual period
Category 62: Solid waste depot: premises on which waste is stored, or sorted, pending final disposal or re-use.	550 tonnes per annual period

This licence is granted to the licence holder, subject to the attached conditions, on 18 Month 2025,



*Environmental Protection Act 1986 (WA)*



# **Controlled Waste Carrier Licence**

## **Environmental Protection (Controlled Waste) Regulations 2004**

<b>Owner:</b>	Manager Controlled Waste
<b>Division:</b>	Compliance and Enforcement
<b>Issued Date:</b>	03 July 2025
<b>File Number:</b>	DWERVT19325
<b>Version:</b>	v1.0



# Licence

## *Environmental Protection (Controlled Waste) Regulations 2004*

**Licensee: Veolia Environmental Services (Australia) Pty Ltd**

**Licence Number: T00019**

**Trading Name:** Veolia Environmental Services

**ACN:** 051 316 584

**BRN:** BN10492355

**ABN:** 20 051 316 584

**Premises address:** 923 Cockburn Road  
HENDERSON WA 6166

**Issue date:** Thursday, 03 July 2025

**Commencement date:** Tuesday, 01 July 2025

**Expiry date:** Sunday, 30 June 2030

### Controlled waste

Containment type	Definition	Category Group and / or Waste Code
Bulk controlled waste	Controlled waste that is transported in a tank. A tank means an enclosed space that is on, attached to or part of a vehicle and used or designed to be used for the transportation of a liquid or gas in bulk.	A, B, C, D, E, F, G, H, J, K, L, M, N, R and T
Packaged controlled waste	Controlled waste that is transported otherwise than as a bulk controlled waste	A, B, C, D, E, F, G, H, J, K, L, M, N, R and T



operated by  VEOLIA

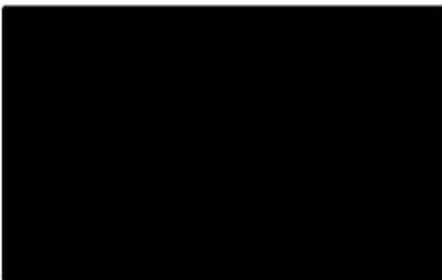


### WASTE ACCEPTANCE

To Whom it may concern

Western Resource Recovery can receive the below waste categories from Vida Wood Australia Pty. Ltd. into our Welshpool facility under our license granted by the Department of Water and Environmental Regulations. Licence Number 7639/2000/8

A100	A110	A130	B100	C100	D100	D120	D130	D140	D141
D150	D151	D160	D170	D180	D190	D200	D210	D211	D220
D221	D230	D240	D250	D270	D290	D300	D310	D330	D340
D350	D360	E100	E120	E130	F100	F110	F120	F130	G100
G110	G130	G150	G160	H100	H110	H130	H170	J100	J120
J130	J160	J170	J180	K100	K110	K130	K140	K190	K200
K210	L100	L150	M100	M105	M130	M150	M160	M170	M180
M210	M220	M230	M250	M260	N100	N120	N140	N160	N190
N205	T100	T120	T140						



## Appendices 7.8

### Photos Examples:

- Auto Pack Stacker
- Pack Outfeed Deck
- Auto Pack Stacker and Outfeed Combined







## Appendices 7.9

- Site Orientation Photos
- Drawing Outlining Location of Spray Unit, Designated Truck Load/Unload Area and Warehouse Access





**PERTH COMMERCIAL**  
PROPERTY



