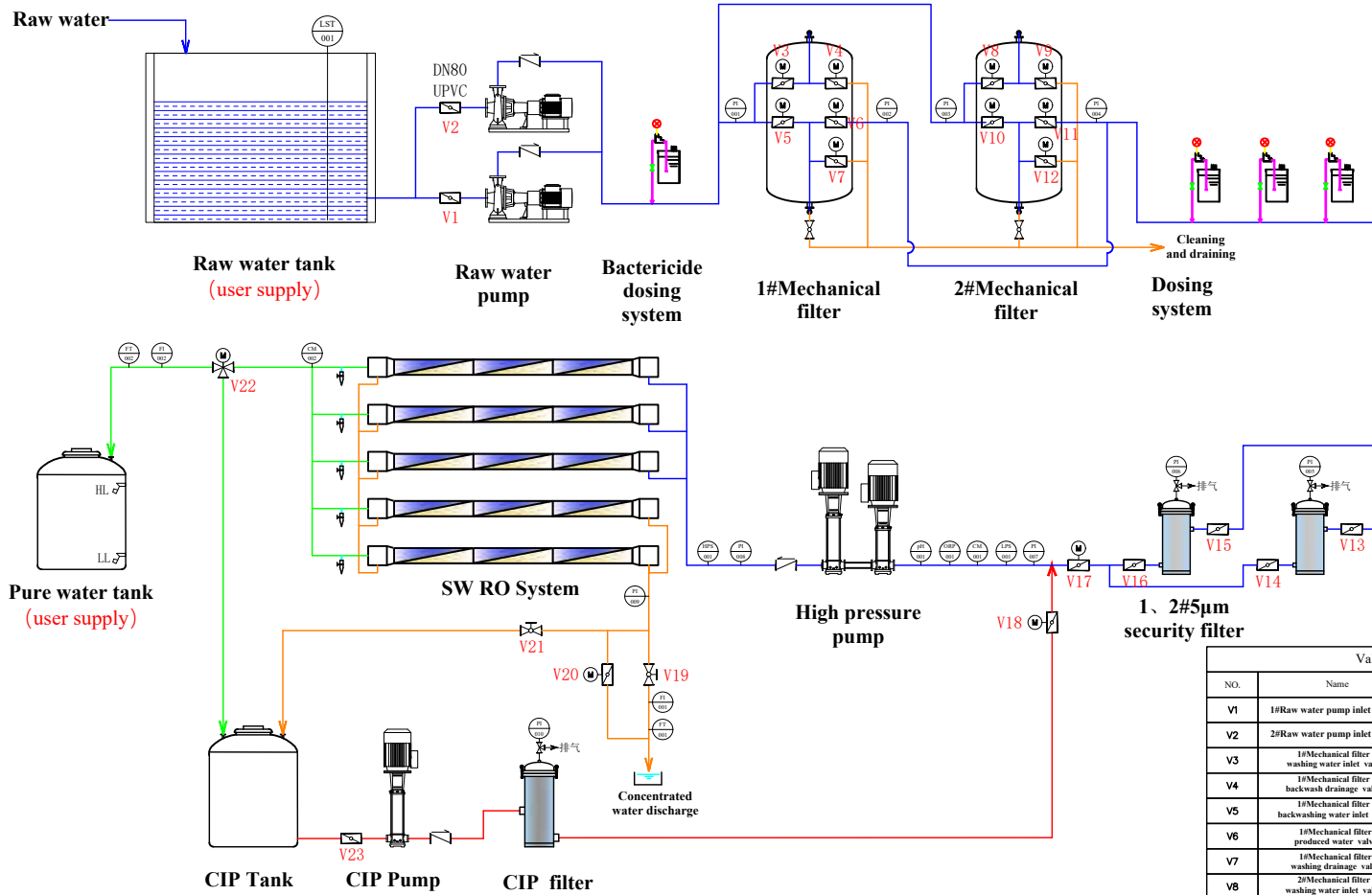


CK-SW-10T/H SEAWATER DESALINATION SYSTEM



Valve description			
NO.	Name	NO.	Name
V1	1#Raw water pump inlet valve	V13	1#5µm security filter inlet valve
V2	2#Raw water pump inlet valve	V14	1#5µm security filter outlet valve
V3	1#Mechanical filter washing water inlet valve	V15	2#5µm security filter inlet valve
V4	1#Mechanical filter backwash drainage valve	V16	2#5µm security filter outlet valve
V5	1#Mechanical filter backwashing water inlet valve	V17	RO inlet electric valve
V6	1#Mechanical filter produced water valve	V18	Flush water inlet electric valve
V7	1#Mechanical filter washing drainage valve	V19	Concentrated water flow regulating gate valve
V8	2#Mechanical filter washing water inlet valve	V20	Concentrated water electric valve
V9	2#Mechanical filter backwash drainage valve	V21	Concentrated water cleaning reflux valve
V10	2#Mechanical filter backwashing water inlet valve	V22	RO product water electric three-way valve
V11	2#Mechanical filter produced water valve	V23	CIP pump inlet valve
V12	2#Mechanical filter washing drainage valve	/	/

Legend description

Serial number	Legend	Legend name	Serial number	Legend	Legend name
01		Ball valve	09		Pressure gauge
02		Check valve	10		Flowmeter
03		Three-way valve	11		Flow sensor
04		Butterfly valve	12		pH meter
05		Electric actuator	13		Conductivity meter
06		< DN50 Globe valve	14		ORP meter
07		Liquid level switch (HL, LL, High, Medium, Low liquid level)	15		Low pressure protection switch
08		Sampling valve	16		High pressure protection switch



CHUNKE

设计	李月欣	2025-12-24	项目名称	澳大利亚CK-SW-10T/H海水淡化集装箱设备	
制图	翁源昊	2025-12-24	Diagram	修改日期	
审核	邱升奇	2025-12-24		12/24	
批准	黄桂荣	2025-12-24	图号	CK-SW-20251224-01	共1张 第1张

档案编号 /