

Information contained on this drawing is the copyright of Golder Associates Pty. Ltd. Unauthorised use or reproduction of this plan either wholly or in part without written permission infringes copyright. © Golder Associates Pty. Ltd.

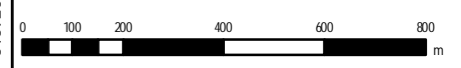


Former Waste Control Site, Bellevue  
**LOCATION PLAN**

**Legend**

- Main Roads
  - (Red line)
  - (Thick red line)
- Railway
  - (Black line with cross-ticks)
- Park
  - (Green fill)
- Drainage Area
  - (Blue outline)
- Boundaries
  - (Yellow fill)
  - (Purple fill)
  - (Blue fill)
  - (Light green fill)

COPYRIGHT:  
Base map information courtesy of MapInfo  
Aerial photography copyright DLI 12.02.2000



A3 SCALE 1:15,000  
Datum GDA94, Projection MGA94, Zone 50

CLIENT Department of Environment and Conservation  
PROJECT 087643011 036 R REV0  
DATE JUN 2008  
DRAWN JOR  
APPROVED MB



Level 2, 1 Havelock Street Ph: +618 9213 7600  
West Perth WA 6005 Fx: +618 9213 7611





Information contained on this drawing is the copyright of Golder Associates Pty. Ltd. Unauthorised use or reproduction of this plan either wholly or in part without written permission infringes copyright. © Golder Associates Pty. Ltd.



A3 SCALE 1:1,500

Datum GDA94, Projection MGA94, Zone 50

COPYRIGHT:

Aerial photography(2006) and Cadastre  
Sourced from Landgate



Level 2, 1 Havelock Street Ph: +618 9213 7600  
West Perth WA 6005 Fx: +618 9213 7611



**Groundwater Sampling Locations**

**AQUIFER TYPE**

- Alluvium
- Base of Guildford
- Guildford (Regional)
- Shallow
- Leederville
- ✕ Decommissioned or Destroyed

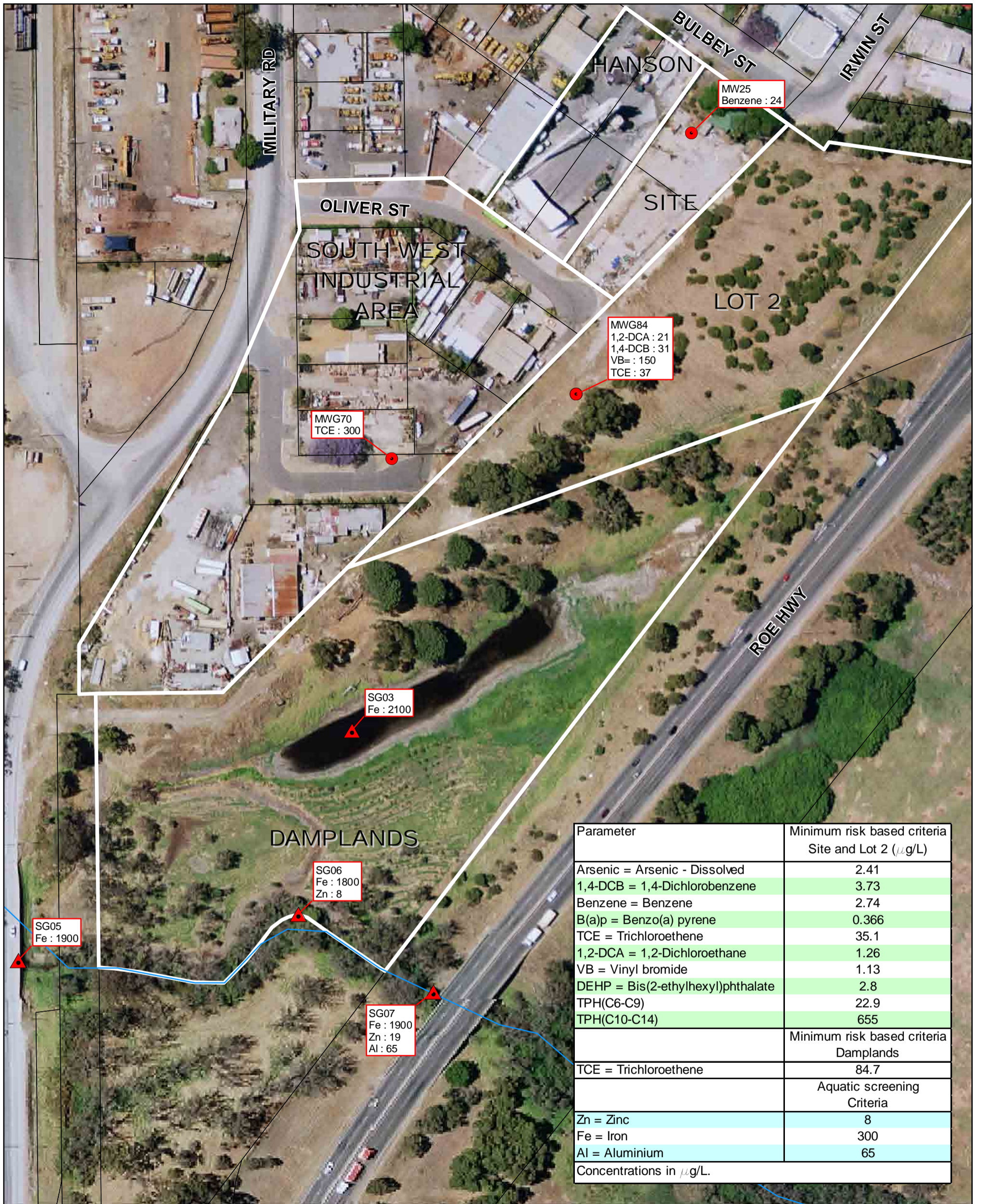
**Surface Water Sampling Locations**

- Drainage
- Site Boundaries
- Cadastre

Former Waste Control Site, Bellevue  
**LOCATION OF  
OFF-SITE STUDY AREA AND  
SAMPLING LOCATIONS**

CLIENT Department of Environment and Conservation  
PROJECT 087643011 036 R REV0  
DATE Oct 2008  
DRAWN SR  
APPROVED MB

Figure 2



Parameter	Minimum risk based criteria Site and Lot 2 ( $\mu\text{g/L}$ )
Arsenic = Arsenic - Dissolved	2.41
1,4-DCB = 1,4-Dichlorobenzene	3.73
Benzene = Benzene	2.74
B(a)p = Benzo(a) pyrene	0.366
TCE = Trichloroethene	35.1
1,2-DCA = 1,2-Dichloroethane	1.26
VB = Vinyl bromide	1.13
DEHP = Bis(2-ethylhexyl)phthalate	2.8
TPH(C6-C9)	22.9
TPH(C10-C14)	655
	Minimum risk based criteria Damplands
TCE = Trichloroethene	84.7
	Aquatic screening Criteria
Zn = Zinc	8
Fe = Iron	300
Al = Aluminium	65

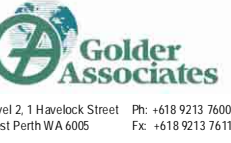
Concentrations in  $\mu\text{g/L}$ .

0 12.5 25 50 75 100 m  
 A3 SCALE 1:1,500  
 Datum GDA94, Projection MGA94, Zone 50



COPYRIGHT:  
 Aerial photography(2006) and Cadastre Sourced from Landgate

CLIENT Department of Environment and Conservation  
 PROJECT 087643011 036 R REV0  
 DATE NOV 2008  
 DRAWN SR  
 APPROVED MB



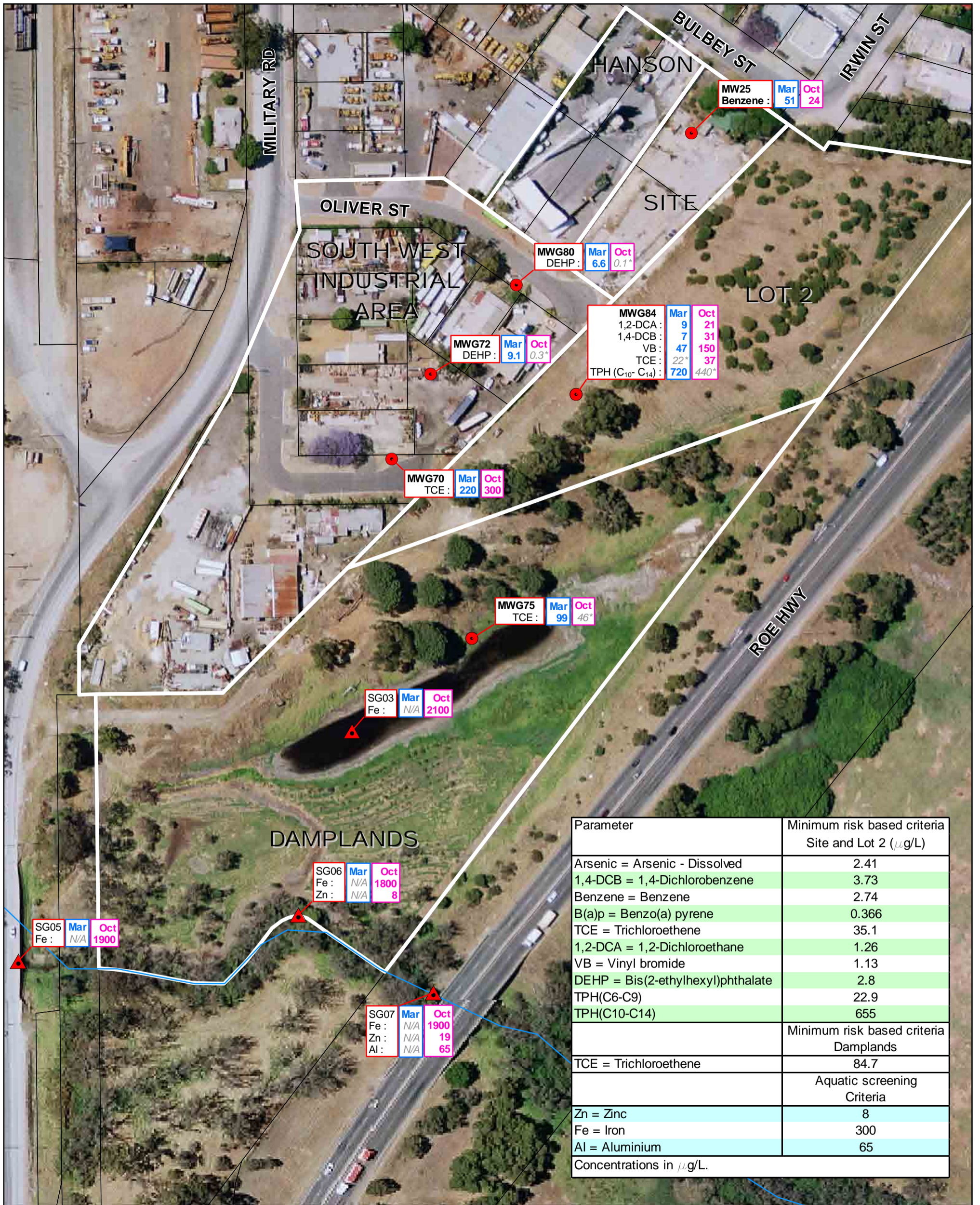
**Concentrations over RBC**

- Groundwater
- ▲ Surface Water
- ▭ Site Boundaries
- ▭ Cadastre
- Drainage

Former Waste Control Site, Bellevue  
**GROUNDWATER CONCENTRATIONS (2008) EXCEEDING RISK-BASED CRITERIA AND AQUATIC SCREENING CRITERIA**

Figure 3

Information contained on this drawing is the copyright of Golder Associates Pty. Ltd. Unauthorised use or reproduction of this plan, either wholly or in part without written permission infringes copyright. © Golder Associates Pty. Ltd.



0 12.5 25 50 75 100 m  
A3 SCALE 1:1,500

Datum GDA94, Projection MGA94, Zone 50

COPYRIGHT:  
Aerial photography(2006) and Cadastre  
Sourced from Landgate



Level 2, 1 Havelock Street Ph: +618 9213 7600  
West Perth WA 6005 Fx: +618 9213 7611

CLIENT Department of Environment and  
Conservation

PROJECT 087643011 036 R REV0

DATE NOV 2008

DRAWN SR

APPROVED MB

\* Concentration Below  
Risk-based Criteria

**Concentrations over RBC**

- Groundwater
- ▲ Surface Water
- Site Boundaries
- Cadastre
- Drainage

Former Waste Control Site, Bellevue

**COMPARISON OF RESULTS  
FROM MARCH AND OCT 2008  
EXCEEDING RISK-BASED CRITERIA**

Figure  
4