



Application for Works Approval Amendment

Part V Division 3 of the *Environmental Protection Act 1986*

Works Approval Number	W6322/2019/1
Works Approval Holder	IB Operations Pty Ltd
ACN	165 513 557
File Number	DER2019/000575
Premises	Iron Bridge Magnetite Project Mining Tenements M45/1226, L45/293, L45/294, L45/359, L45/360, L45/361, L45/364 and L45/367 MARBLE BAR WA 6760
Date of Report	22/06/2022
Decision	Revised works approval granted

Alana Kidd
MANAGER, RESOURCE INDUSTRIES

an officer delegated under section 20 of the *Environmental Protection Act 1986* (WA)

Table of Contents

1. Decision summary	1
2. Scope of assessment	1
2.1 Regulatory framework.....	1
2.2 Application Summary.....	1
2.3 Part IV of the EP Act.....	1
3. Risk assessment.....	1
3.1 Source-pathways and receptors	1
3.1.1 Emissions and controls	1
3.1.2 Receptors.....	3
3.2 Risk ratings.....	5
4. Consultation	10
5. Conclusion	10
5.1 Summary of amendments.....	10
References.....	10
Appendix 1: Summary of Works Approval Holder's comments on risk assessment and draft conditions	12
Appendix 2: Application validation summary	13
 Table 1: Works Approval Holder controls	 2
Table 2: Environmental receptors and distance from prescribed activity	3
Table 3. Risk assessment of potential emissions and discharges from the Premises during construction, commissioning and time limited operations	6
Table 4: Consultation	10
Table 5: Summary of works approval amendments.....	10

1. Decision summary

Works Approval W6322/2019/1 is held by IB Operations Pty Ltd (Works Approval Holder) for the Iron Bridge Magnetite Project (the Premises), located at Mining tenements M45/1226, L45/293, L45/294, L45/359, L45/360, L45/361, L45/364 and L45/367 MARBLE BAR WA 6760.

This Amendment Report documents the assessment of potential risks to the environment and public health from proposed changes to the emissions and discharges during the construction of the Premises. As a result of this assessment, Revised Works Approval W6322/2019/1 has been granted.

2. Scope of assessment

2.1 Regulatory framework

In completing the assessment documented in this Amendment Report, the department has considered and given due regard to its Regulatory Framework and relevant policy documents which are available at <https://dwer.wa.gov.au/regulatory-documents>.

2.2 Application Summary

On 29 March 2022, the Works Approval Holder submitted an application to the department to amend Works Approval W6322/2019/1 (W6322) under section 59 and 59B of the *Environmental Protection Act 1986* (EP Act). The amendment application relates to the installation of a relocated Concentration Handling Facility (CHF) at the Stage 2 Ore Processing Facility (OPF) wet plant (Figure 1) which is currently under construction through W6322. The OPF under construction is designed to process 72,000,000 tonnes per annum (tpa) of magnetite ore which is expected to produce up to 25,000,000 tpa of wet ore concentrate.

The CHF infrastructure is currently located at the Stage 1 CHF which is approximately 45km north of the OPF and is licenced under L8845/2014/1. The Works Approval Holder proposes to dismantle the CHF infrastructure and transport it to the OPF for installation as shown in Figure 2. The CHF will process 225,000 tonnes of magnetite ore concentrate (concentrate) which is currently stockpiled at the Stage 1 CHF and will be transported by triple road trains to the premises.

The trucked concentrate will initially be stored in the existing feed material stacking area at the OPF, before being transported by front end loader (FEL) to the Day Stockpile at the relocated CHF. The concentrate will then be processed through the relocated CHF for an approximate period of four months following the installation of the infrastructure. The process is set out below and also shown in Figure 3.

- A FEL will feed concentrate into the Feed Hopper at a rate of 510 tonnes per hour over a 9-hour day period. The Works Approval Holder has allowed for the installation of a 100 mm grizzly at the hopper to protect downstream processing. The concentrate will be kept moist (wetted) to minimise dust levels when transporting the material to the hopper.
- From the Hopper, concentrate will then feed onto an open conveyor which will deposit the material into the CHF slurry tank via an enclosed head chute. The CHF slurry tank is a modified relocated pilot plant tank and consists of an agitator for mixing concentrate and added processing water to create a slurry. The slurry material consists of 50 wt% solids. Concrete bunding will be installed to contain any spills of slurry material.

The slurry is then pumped through a 300 mm diameter slurry pipeline to the RMS feed tanks under construction at the OPF. The slurry passes through a trash screen before entering an RMS feed tank.

The Works Approval Holder has stated the inclusion of the slurry material (225,000 tonnes) from the CHF into the OPF processing circuit will not increase the overall throughput capacity of 72 Mtpa approved through W6322. The Works Approval Holder notes 55,000 tonnes of the 225,000 tonnes will be used during commissioning of the CHF.

The inclusion of the one-off additional 225,000 tonnes of ore concentrate from the CHF into the OPF represents approximately 0.3% of the total annual throughput of the premises and therefore is expected to have a negligible effect on the characteristics of the waste material (tailings).

The Works Approval Holder also proposes to relocate two 2MVA diesel fuelled gensets at the CHF and a 2000 litre self-bunded diesel fuel tank.

The Works Approval Holder expects the relocation and installation of the CHF infrastructure at the OPF will take approximately four months.

Figure 1: Location of Stage 2 Ore Processing Facility (under construction)

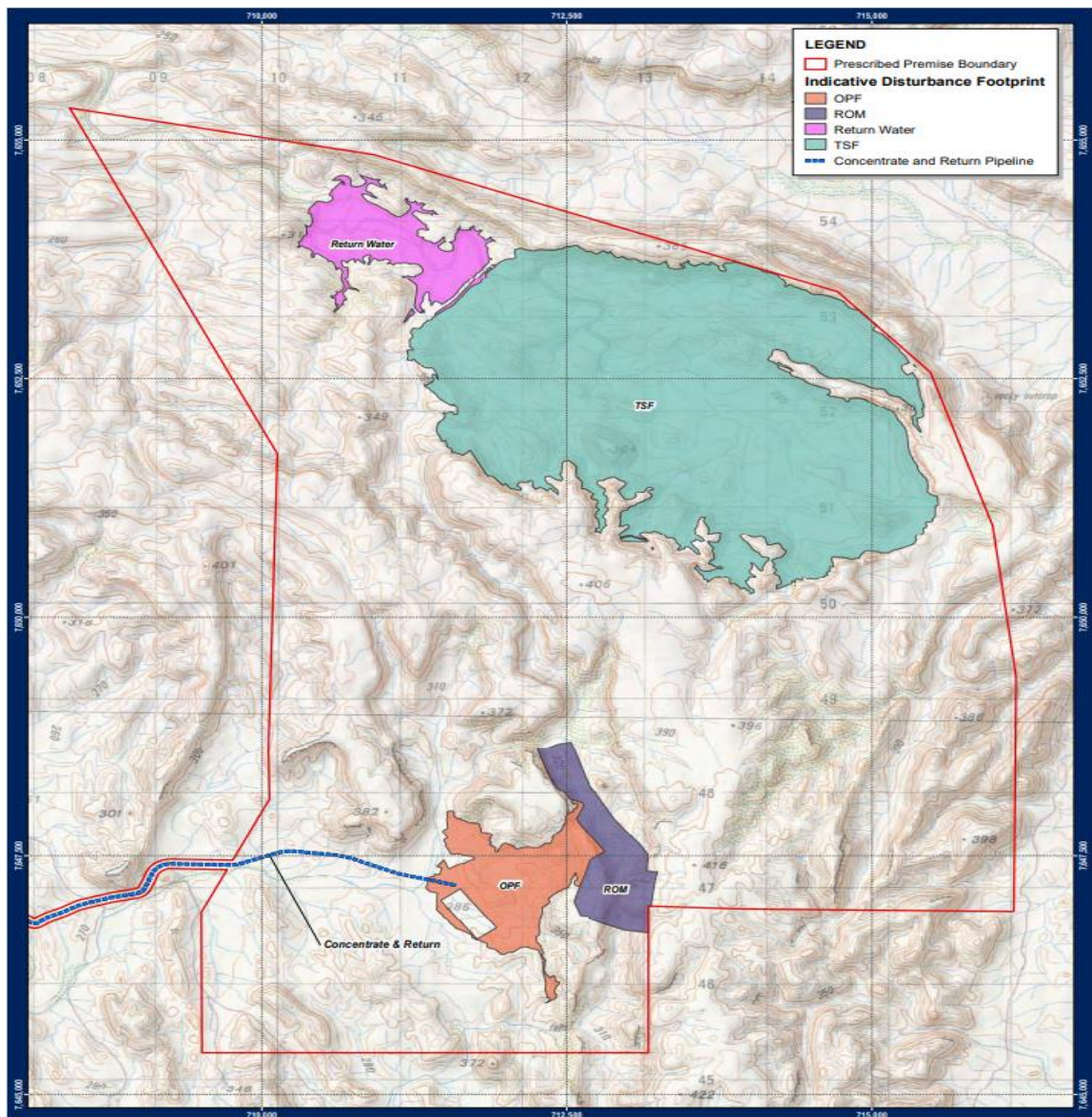


Figure 2: Proposed CHF Infrastructure layout

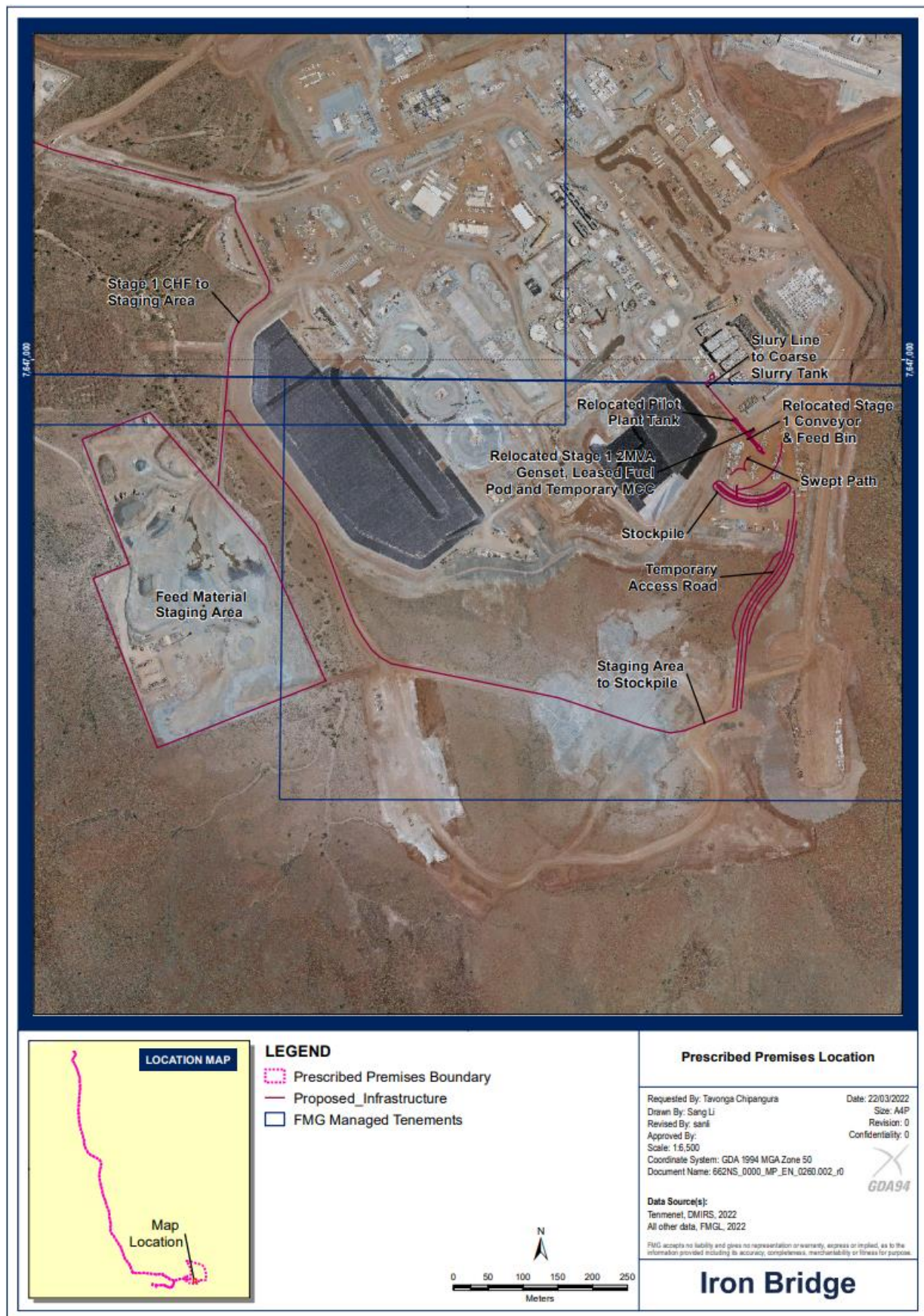
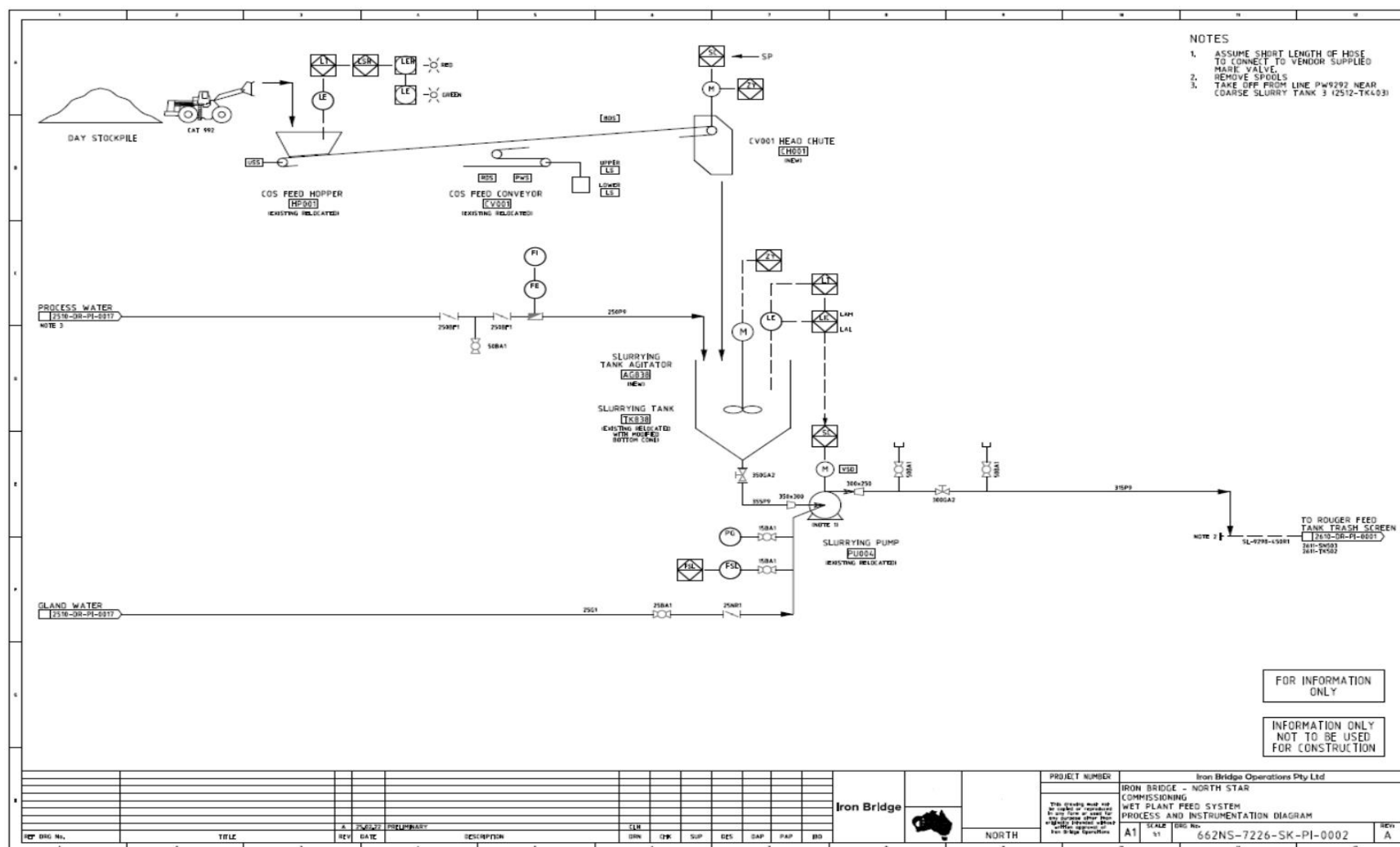


Figure 3: CHF Process Flow Diagram



2.3 Part IV of the EP Act

The EPA set a level of assessment for the Premises as Public Environmental Review. The subsequent EPA report (Assessment 1946) assessed impacts from an open cut iron ore mine (above ground), tailings storage facility, waste rock dump and borefield, water pipeline infrastructure, and a slurry pipeline connecting the mine to facilities in Port Hedland.

The EPA considered the following key environmental factors in their assessment:

- Flora and Vegetation;
- Terrestrial Fauna;
- Subterranean Fauna;
- Hydrological Processes and Inland Waters Environmental Quality; and
- Offsets – integrating factor.

Ministerial Statement (MS) 993 was issued based on the outcome of the assessment of the above environmental factors. Conditions of MS 993 included management of the mine, borefield and linear infrastructure to avoid rare and priority flora species, fauna species and threatened ecological communities, and to rescue fauna trapped in trenches associated with the construction of the linear infrastructure. Conditions also related to ensuring no detrimental impact to the water quality or hydrological regime of Site 12 Pool (Pilbara Olive Python habitat). General impacts to vegetation relating to dust emissions, product spills and management of contaminated stormwater (the main emissions relating to this amendment application), will be assessed as these were not considered to be key environmental factors requiring evaluation by the EPA.

3. Risk assessment

The department assesses the risks of emissions from prescribed premises and identifies the potential source, pathway and impact to receptors in accordance with the *Guideline: Risk assessments* (DWER 2020).

To establish a Risk Event there must be an emission, a receptor which may be exposed to that emission through an identified actual or likely pathway, and a potential adverse effect to the receptor from exposure to that emission.

3.1 Source-pathways and receptors

3.1.1 Emissions and controls

The key emissions and associated actual or likely pathway during premises construction and operation which have been considered in this Amendment Report are detailed in Table 1 below. Table 1 also details the proposed control measures the Works Approval Holder has proposed to assist in controlling these emissions, where necessary.

Table 1: Works Approval Holder controls

Emission	Sources	Potential pathways	Proposed controls
Dust	<p>Vehicle movements, earthworks and construction activities.</p> <p>Loading and unloading of product, lift-off from stockpiles, conveyors and transfer points.</p>	Air/windborne pathway	<p>The Applicant has stated that they will commit to managing construction dust in accordance with the procedures set out in the 'FMG, <i>Mine and Rail Dust Management Plan</i>, Environment, August 2011' (Dust Plan). The key management controls in the Dust Plan include:</p> <ul style="list-style-type: none"> • Dust suppression (water) will be used on roads and construction area as required. • Undertake ground disturbance incrementally. • Restrict clearing to the minimum areas required. • Rehabilitate areas as they become available. <p>The Applicant has stated that they will commit to managing dust during commissioning and time limited operations in accordance with the procedures set out in the Dust Plan. The key management controls in the Dust Plan include:</p> <ul style="list-style-type: none"> • Dust suppression (water) will be used on roads and cleared area as required. • Stockpiles will be wetted down by water trucks therefore minimising fugitive dust emissions and also minimising dust emissions during loading and unloading of ore concentrate by FEL. • The conveyor head chute to the Slurrying Tank will be enclosed. • The moisture level of the ore concentrate on the feed conveyor will be maintained at a high level. <p>The Applicant has stated they will undertake regular visual inspections to ensure the dust control measures remain effective.</p>
Contaminated stormwater	Stockpiles and CHF infrastructure area.	Direct discharge to land	<p>Contaminated stormwater at the CHF will be managed in accordance with the procedures set out in the Fortescue's Surface Water Management Plan. This includes:</p> <p>Infrastructure being located on a raised earthen pad.</p> <p>Each pad will be raised above flood levels and will be sloped at approximately two degrees to designated sediment basins. These basins are designed to hold stormwater from intermittent rainfall events, or the initial flush of significant rainfall events. The sedimentation ponds will</p>

Emission	Sources	Potential pathways	Proposed controls
			<p>allow the sediment to settle out, so that the overflow water is relatively free of sediments.</p> <p>Routine maintenance of sediment basins to maintain capacity.</p> <p>Overflow points will be fixed with coarse rock material to prevent erosion during flow events.</p> <p>All clean stormwater will be diverted away from infrastructure where practicable.</p>
Magnetite ore slurry	Leaks and rupture of Slurrying Tank and slurry pipeline to Rougher Feed Tank	Direct discharge to land	<p>The Works Approval Holder will install concrete bunding at the Slurrying Tank to contain any product spillage.</p> <p>Pipelines are buried to contain leaks and spills and are fitted with leak detection systems.</p>
Spills and breach of containment causing hydrocarbon discharge	Use and storage of hydrocarbons	Direct discharge to land and infiltration to groundwater	<p>Hydrocarbons will be managed in accordance with the procedures set out in Fortescue's:</p> <ul style="list-style-type: none"> - Chemical and Hydrocarbon Management Plan; - Environmental Spill Procedure; and - Chemical and Hydrocarbon Storage Procedure. <p>Diesel fuel stored in a 2,000 litres self-bunded tank.</p> <p>Spill kit/s provided to recover spilt hydrocarbons.</p>

3.1.2 Receptors

In accordance with the *Guideline: Risk assessments* (DWER 2020), the Delegated Officer has excluded employees, visitors and contractors of the Works Approval Holder's from its assessment. Protection of these parties often involves different exposure risks and prevention strategies, and is provided for under other state legislation.

Table 2 below provides a summary of potential environmental receptors that may be impacted as a result of activities upon or emission and discharges from the prescribed premises (*Guideline: Environmental siting* (DWER 2020)).

Table 2: Environmental receptors and distance from prescribed activity

Environmental receptors	Distance from prescribed activity
<p>Threatened or Priority Flora</p> <p>No threatened reported within the premises boundary.</p> <p>Priority 1 listed flora, <i>Pityrodia</i> sp. Marble Bar reported in the area.</p>	<p>Located at the Premises.</p> <p>Impacts to <i>Pityrodia</i> sp. Marble Bar from activities at the Premises is regulated under conditions of MS933 with the exception of impacts from dust.</p>
Threatened or Priority Fauna	Impacts to the Pilbara Leaf-nosed Bat, Northern Quoll and Pilbara Olive Python from activities at the

Pilbara Leaf-nosed Bat, Northern Quoll and Pilbara Olive Python	Premises is regulated under conditions of MS933. Screened out as a receptor.
<p>Surface water</p> <p>Chinnamon Creek and other unnamed ephemeral creeks which eventual flow into the Turner River 20 km away.</p> <p>The creeks in the region are ephemeral in nature and generally only flow for short durations following rainfall events. Intermittent flows normally occur during the wet season with long periods without flows during the dry season.</p>	<p>Chinnamon Creek immediately north of the Premises</p> <p>Numerous unnamed creek lines cross the Premises.</p>
<p>Groundwater</p> <p>Groundwater quality is classed as fresh to slightly brackish with recorded total dissolved solids (TDS) in the range of 300 mg/L to 3,500 mg/L.</p>	<p>Depth to groundwater across the Premises typically ranges from 2.5 to 21.5 metres with the shallower depths observed within the valley floor at the location of the TSF.</p>

3.2 Risk ratings

Risk ratings have been assessed in accordance with the *Guideline: Risk Assessments* (DWER 2020) for those emission sources which are proposed to change and takes into account potential source-pathway and receptor linkages as identified in Section 3.1. Where linkages are in-complete they have not been considered further in the risk assessment.

Where the Works Approval Holder has proposed mitigation measures/controls (as detailed in Section 3.1), these have been considered when determining the final risk rating. Where the Delegated Officer considers the Works Approval Holder's proposed controls to be critical to maintaining an acceptable level of risk, these will be incorporated into the works approval as regulatory controls.

Additional regulatory controls may be imposed where the Works Approval Holder's controls are not deemed sufficient. Where this is the case the need for additional controls will be documented and justified in Table 3.

The Revised Works Approval W6322/2019/1 that accompanies this Amendment Report authorises construction and time-limited operations. The conditions in the Revised Works Approval have been determined in accordance with *Guidance Statement: Setting Conditions* (DER 2015).

A licence is required following the time-limited operational phase authorised under the works approval to authorise emissions associated with the ongoing operation of the Premises i.e. category 5 activities. A risk assessment for the operational phase has been included in this Amendment Report, however licence conditions will not be finalised until the department assesses the licence application.

Table 3. Risk assessment of potential emissions and discharges from the Premises during construction, commissioning and time limited operations

Risk Event					Risk rating ¹ C = consequence L = likelihood	Works Approval Holder's controls sufficient?	Conditions ² of works approval	Justification for additional regulatory controls
Source/Activities	Potential emission	Potential pathways and impact	Receptors	Works Approval Holder's controls				
Construction								
Earth works, installation of CHF infrastructure and vehicle movements	Hydrocarbon spills from equipment	Direct discharge to land impacting surrounding soils. Overland runoff of hydrocarbon contaminated stormwater causing impacts to onsite creek.	Surrounding soils. Onsite ephemeral creek	Refer to Section 3.1.1	C = Slight Onsite impacts L = Possible The risk event could occur at some time Low Risk	Y	Conditions <u>1</u> , 4, 5, 34, 35, and 36	Applicant proposed infrastructure requirements conditioned in the works approval. Construction and installation of infrastructure to be generally located as identified in the submitted application. Standard administration and reporting requirements. No additional conditions for the regulation of hydrocarbons are considered necessary.
	Dust	Air / wind dispersion causing smothering of vegetation impacting photosynthesis	Vegetation	Refer to Section 3.1.1	C = Slight Onsite impacts L = Unlikely The risk event will probably not occur in most circumstances Low Risk	Y	Conditions <u>1</u> , 4, 5, 34, 35 and 36	Applicant has committed to following the controls set out in the <i>FMG, Mine and Rail Dust Management Plan, Environment, August 2011</i> . See section 3.1.1 above for a

Works Approval: W6322/2019/1

Risk Event					Risk rating ¹ C = consequence L = likelihood	Works Approval Holder's controls sufficient?	Conditions ² of works approval	Justification for additional regulatory controls
Source/Activities	Potential emission	Potential pathways and impact	Receptors	Works Approval Holder's controls				
								<p>description of these controls.</p> <p>Standard conditions applied include construction and installation of infrastructure to be generally located as identified in the submitted application, and standard administration and reporting requirements.</p> <p>No additional conditions for the regulation of dust emissions are considered necessary.</p>
Operation (Commissioning and Time-limited-operations)								
<p>Ore concentrate stockpiles.</p> <p>Transfer of ore concentrate by front end loader (FEL) from the feed material stacking area to the Day Stockpile area.</p> <p>CHF Ore Feed Hopper and head chute.</p>	Dust	Air / wind dispersion causing smothering of vegetation impacting photosynthesis	Vegetation	Refer to Section 3.1.1	<p>C = Slight</p> <p>Onsite impacts</p> <p>L = Unlikely</p> <p>The risk event will probably not occur in most circumstances</p> <p>Low Risk</p>	Y	Conditions <u>1</u> , 4, 5, 10, 11 , 13, 14, 15, 17, 32, 34, 35 and 36	<p>Applicant has committed to following the controls set out in the <i>FMG, Mine and Rail Dust Management Plan, Environment, August 2011</i>. See section 3.1.1 above for a description of these controls.</p>

Works Approval: W6322/2019/1

Risk Event					Risk rating ¹ C = consequence L = likelihood	Works Approval Holder's controls sufficient?	Conditions ² of works approval	Justification for additional regulatory controls
Source/Activities	Potential emission	Potential pathways and impact	Receptors	Works Approval Holder's controls				
								<p>Standard conditions applied include:</p> <ul style="list-style-type: none"> - stockpiles and infrastructure to be generally located as identified in the submitted application - Standard Environmental commissioning and Time Limited Operation requirements. - Standard administration and reporting requirements. <p>No additional conditions for the regulation of dust emissions are considered necessary.</p>
Processing of 225,000 tonnes of ore concentrate at the CHF.	Accidental slurry discharge due to equipment failure, tank rupture, overflow	Direct discharge to land impacting surrounding soils and overland runoff impacting surface water quality	<p>Surrounding soils</p> <p>Onsite ephemeral creek</p>	Refer to Section 3.1.1	<p>C = Minor</p> <p>Low level onsite impacts with minimal offsite local scale impacts</p> <p>L = Unlikely</p> <p>The risk event will probably not occur in most circumstances</p>	Y	<p>Conditions 1, 4, 5, 10, 11, 13, 14, 15, 17, 18, 21, 32, 33, 34, 35 and 36</p>	<p>The CHF is to be generally located as identified in the submitted application.</p> <p>Standard Environmental commissioning and Time Limited Operation requirements for the CHF.</p>

Works Approval: W6322/2019/1

Risk Event					Risk rating ¹	Works Approval Holder's controls sufficient?	Conditions ² of works approval	Justification for additional regulatory controls
Source/Activities	Potential emission	Potential pathways and impact	Receptors	Works Approval Holder's controls	C = consequence L = likelihood			
					Medium Risk			Standard administration and reporting requirements.
	Sediment laden and hydrocarbon contaminated stormwater	Overland runoff impacting surrounding soils and surface water quality	Surrounding soils Onsite ephemeral creek	Refer to Section 3.1.1	C = Minor Low level onsite impacts with minimal offsite local scale impacts L = Possible The risk event could occur at some time Medium Risk	Y	Conditions <u>1</u> , 4, 5, 10, <u>11</u> , 13, 14, 15, 17, <u>18</u> , 21, 32, <u>33</u> , 34, 35 and 36	Location of stockpiles and CHF infrastructure to be located as identified in the submitted application. Standard administration and reporting requirements.
Storage of 2,000L of hydrocarbons including fueling and refueling activities	Spills and breach of containment causing hydrocarbon discharge to land.	Direct discharge to land impacting surrounding soils and infiltration to groundwater causing contamination. Overland runoff of hydrocarbon contaminated stormwater causing impacts to onsite creek.	Surrounding soils. Groundwater Onsite ephemeral creek	Refer to Section 3.1.1	C = Minor Low level onsite impacts with minimal offsite local scale impacts L = Possible The risk event could occur at some time Medium Risk	Y	Conditions <u>1</u> , 4, 5, 34, 35, and 36	Applicant controls conditioned for the diesel fuel storage to be self-bunded. Construction and installation of infrastructure to be generally located as identified in the submitted application. Standard administration and reporting requirements.

Note 1: Consequence ratings, likelihood ratings and risk descriptions are detailed in the *Guideline: Risk assessments* (DWER 2020).

Note 2: Proposed Works Approval Holder's controls are depicted by standard text. **Bold and underline text** depicts additional regulatory controls imposed by department.

Works Approval: W6322/2019/1

IR-T15 Amendment report template v3.0 (May 2021)

4. Consultation

Table 4 provides a summary of the consultation undertaken by the department.

Table 4: Consultation

Consultation method	Comments received	Department response
Works Approval Holder was provided with draft amendment on 8/6/2022	21/06/2022 Applicant advised they wish to waive the comment period and proceed to signing.	Supported

5. Conclusion

Based on the assessment in this Amendment Report, the Delegated Officer has determined that a Revised Works Approval will be granted, subject to conditions commensurate with the determined controls and necessary for administration and reporting requirements.

5.1 Summary of amendments

Table 5 provides a summary of the proposed amendments and will act as record of implemented changes. All proposed changes have been incorporated into the Revised Works Approval as part of the amendment process.

Table 5: Summary of works approval amendments

Condition no.	Proposed amendments
Works Approval	Assessed design capacity corrected to show the processed throughput at the Premises (72Mtpa), not the final output at the Premises (25 Mtpa). This aligns with submitted documentation and the capacity shown in condition 1, Table 1 of the Works Approval.
1, Table 1	Update design and construction requirement table to include the CHF infrastructure and the location.
11, Table 4	Table updated to include commissioning requirements for the new CHF infrastructure.
18, Table 6	Table updated to include the operational requirements for the new CHF during time limited operations.
33	Updated condition to include the requirement to report on the amount of ore concentrate processed through the CHF during Time Limited Operations.
Definitions	Definition provided for the CHF
Schedule 1, Figure 16	New figure shown in Schedule 1 to indicate the location of the CHF infrastructure.

References

1. Department of Environment Regulation (DER) 2015, *Guidance Statement: Setting Conditions*, Perth, Western Australia.
2. DWER 2020, *Guideline: Risk Assessments*, Perth, Western Australia.
3. DWER 2019, *Guideline: Industry Regulation Guide to Licensing*, Perth, Western Australia.

4. DWER 2020, *Guideline: Environmental Sitting*, Perth, Western Australia.
5. FMG March 2022, Iron Bridge, Supporting Document, *North Star 2 – Ore Processing Facility and Infrastructure Works Approval Amendment Supporting Document*.
6. DWER April 2020, Decision Report, *Application for works approval - Iron Bridge Magnetite Project*.
7. FMG August 2011, *Mine and Rail Dust Management Plan – Environment*.

Appendix 1: Summary of Works Approval Holder's comments on risk assessment and draft conditions

Condition	Summary of Works Approval Holder's comment	Department's response
N/A	No comments received. Comment period waived.	N/A

Appendix 2: Application validation summary

SECTION 1: APPLICATION SUMMARY					
Application type					
Works approval	<input type="checkbox"/>				
Licence	<input type="checkbox"/>	Relevant works approval number:		None	<input type="checkbox"/>
		Has the works approval been complied with?		Yes <input type="checkbox"/> No <input type="checkbox"/>	
		Has time limited operations under the works approval demonstrated acceptable operations?		Yes <input type="checkbox"/> No <input type="checkbox"/> N/A <input type="checkbox"/>	
		Environmental Compliance Report / Critical Containment Infrastructure Report submitted?		Yes <input type="checkbox"/> No <input type="checkbox"/>	
		Date Report received:			
Renewal	<input type="checkbox"/>	Current licence number:			
Amendment to works approval	<input checked="" type="checkbox"/>	Current works approval number:	W6322/2019/1		
Amendment to licence	<input type="checkbox"/>	Current licence number:			
		Relevant works approval number:		N/A	<input type="checkbox"/>
Registration	<input type="checkbox"/>	Current works approval number:		None	<input type="checkbox"/>
Date application received		29 March 2022			
Applicant and Premises details					
Applicant name/s (full legal name/s)		IB Operations Pty Ltd			
Premises name		Iron Bridge Magnetite Project			
Premises location		Mining tenements M45/1226, L45/293, L45/294, L45/359, L45/360, L45/361, L45/364 and L45/367			
Local Government Authority		Shire of Marble Bar			
Application documents					
HPCM file reference number:		DWERT583297			
Key application documents (additional to application form):		FMG Iron Bridge, North Star Stage 2 – Ore Processing Facility and Infrastructure Works Approval Amendment Supporting Document, 25 March 2022			
Scope of application/assessment					

Summary of proposed activities or changes to existing operations.	<i>Works approval amendment</i> Construction Amend work approval conditions relating to the design and construction/installation requirements to include the installation of a Concentration Handling Facility (CHF) at the Stage 2 Ore Processing Facility (OPF) wet plant which is currently under construction. The CHF will be relocated from the nearby (45km west) Stage 1 Premises (L8845/2014/1) and consists of tanks, conveyor, hopper and screen to process a total of 225,000 tonnes over a 4 month period. No increase in the design capacity is required.	
	Operation Amend works approval conditions to allow for the Commissioning and Time Limited Operations of the CHF.	
Category number/s (activities that cause the premises to become prescribed premises)		
Table 1: Prescribed premises categories		
Prescribed premises category and description	Assessed production or design capacity	Proposed changes to the production or design capacity (amendments only)
Category 5: Processing or beneficiation of metallic or non-metallic ore	25,000,000 tonnes per annum (wet)	No change
Legislative context and other approvals		
Has the applicant referred, or do they intend to refer, their proposal to the EPA under Part IV of the EP Act as a significant proposal?	Yes <input type="checkbox"/> No <input checked="" type="checkbox"/>	Referral decision No: Managed under Part V <input checked="" type="checkbox"/> Assessed under Part IV <input type="checkbox"/>
Does the applicant hold any existing Part IV Ministerial Statements relevant to the application?	Yes <input checked="" type="checkbox"/> No <input type="checkbox"/>	Ministerial statement No: MS 993 EPA Report No: 1514
Has the proposal been referred and/or assessed under the EPBC Act?	Yes <input checked="" type="checkbox"/> No <input type="checkbox"/>	Reference No: EPBC2012/6689
Has the applicant demonstrated occupancy (proof of occupier status)?	Yes <input type="checkbox"/> No <input checked="" type="checkbox"/>	Certificate of title <input type="checkbox"/> General lease <input type="checkbox"/> Expiry: Mining lease / tenement <input type="checkbox"/> Expiry: Other evidence <input type="checkbox"/> Expiry:
Has the applicant obtained all relevant planning approvals?	Yes <input type="checkbox"/> No <input type="checkbox"/> N/A <input checked="" type="checkbox"/>	Approval: Expiry date: If N/A explain why? Shire scheme allows for this type of development

Has the applicant applied for, or have an existing EP Act clearing permit in relation to this proposal?	Yes <input checked="" type="checkbox"/> No <input type="checkbox"/>	CPS No: CPS 5427/5; CPS 6106/2; CPS 6236/1
Has the applicant applied for, or have an existing CAWS Act clearing licence in relation to this proposal?	Yes <input type="checkbox"/> No <input checked="" type="checkbox"/>	Application reference No: N/A Licence/permit No: N/A No clearing is proposed.
Has the applicant applied for, or have an existing RIWI Act licence or permit in relation to this proposal?	Yes <input checked="" type="checkbox"/> No <input type="checkbox"/>	Application reference No: N/A Licence/permit No: GWL164321, GWL179289, GWL175700, CAW2013155(1)
Does the proposal involve a discharge of waste into a designated area (as defined in section 57 of the EP Act)?	Yes <input type="checkbox"/> No <input checked="" type="checkbox"/>	Name: N/A Type: Has Regulatory Services (Water) been consulted? Yes <input type="checkbox"/> No <input type="checkbox"/> N/A <input checked="" type="checkbox"/> Regional office:
Is the Premises situated in a Public Drinking Water Source Area (PDWSA)?	Yes <input type="checkbox"/> No <input checked="" type="checkbox"/>	Name: N/A Priority: P1 / P2 / P3 / N/A Are the proposed activities/ landuse compatible with the PDWSA (refer to WQPN 25)? Yes <input type="checkbox"/> No <input type="checkbox"/> N/A <input checked="" type="checkbox"/>
Is the Premises subject to any other Acts or subsidiary regulations (e.g. <i>Dangerous Goods Safety Act 2004</i> , <i>Environmental Protection (Controlled Waste) Regulations 2004</i> , <i>State Agreement Act xxxx</i>)	Yes <input checked="" type="checkbox"/> No <input type="checkbox"/>	<i>Dangerous Goods Safety Act 2004</i> <i>Mining Act 1978</i> <i>Rights in Water and Irrigation Act 1914</i>
Is the Premises within an Environmental Protection Policy (EPP) Area?	Yes <input type="checkbox"/> No <input checked="" type="checkbox"/>	
Is the Premises subject to any EPP requirements?	Yes <input type="checkbox"/> No <input checked="" type="checkbox"/>	

<p>Is the Premises a known or suspected contaminated site under the <i>Contaminated Sites Act 2003</i>?</p>	<p>Yes <input type="checkbox"/> No <input checked="" type="checkbox"/></p>	<p>Classification: N/A Date of classification: N/A</p>
-------------------------------------------------------------------------------------------------------------	----------------------------------------------------------------------------	------------------------------------------------------------