



<b>Works Approval Number</b>	W6232/2019/1
<b>Works Approval Holder</b>	Robe River Mining Co. Pty Ltd
<b>ACN</b>	008 694 246
<b>Registered business address</b>	Level 18 Central Park 152-158 St Georges Terrace PERTH WA 6000
<b>File Number</b>	DER2019/000176-1
<b>Duration</b>	06/11/2019 to 05/11/2022
<b>Date of issue</b>	06/11/2019
<b>Prescribed Premises</b>	Category 05 Category 06 Category 12 Category 64
<b>Premises</b>	West Angelas Iron Ore Mine - Deposits C, D and G Part of LAA lease G47/1236 and AML70/248 NEWMAN WA 6753  As defined by the coordinates in Schedule 1.

This Works Approval is granted to the Works Approval Holder, subject to the following conditions, on 6 November 2019, by:

**Alana Kidd**

**Manager, Resource Industries**

an officer delegated under section 20 of the *Environmental Protection Act 1986* (WA)

## Explanatory notes

These explanatory notes do not form part of this Works Approval.

### Defined terms

---

Definition of terms used in this Works Approval can be found at the start of this Works Approval. Terms which are defined have the first letter of each word capitalised throughout this Works Approval.

### Department of Water and Environmental Regulation

---

The Department of Water and Environmental Regulation (DWER) is established under section 35 of the *Public Sector Management Act 1994* and designated as responsible for the administration of Part V, Division 3 of the *Environmental Protection Act 1986 (WA)* (EP Act). The Department also monitors and audits compliance with licences and works approvals, takes enforcement action and develops and implements licensing and industry regulation policy.

### Works Approval

---

Section 52 of the EP Act provides that an occupier of any premises commits an offence if any work is undertaken on, or in relation to, the premises which causes the premises to become, or to become capable of being, Prescribed Premises, except in accordance with a works approval.

Section 56 of the EP Act provides that an occupier of Prescribed Premises commits an offence if Emissions are caused or increased or permitted to be caused or increased, or Waste, noise, odour or electromagnetic radiation is altered or permitted to be altered from Prescribed Premises, except in accordance with a works approval or licence.

Categories of Prescribed Premises are defined in Schedule 1 of the *Environment Protection Regulations 1987 (WA)* (EP Regulations).

This Works Approval does not authorise any activity which may be a breach of the requirements of another statutory authority including, but not limited to, the following:

- conditions imposed by the Minister for Environment under Part IV of the EP Act;
- conditions imposed by DWER for the clearing of native vegetation under Part V, Division 2 of the EP Act;
- any requirements under the *Waste Avoidance and Resource Recovery Act 2007*;
- any requirements under the *Environmental Protection (Controlled Waste) Regulations 2004*; and
- any other requirements specified through State legislation.

It is the responsibility of the Works Approval Holder to ensure that any action or activity referred to in this Works Approval is permitted by, and is carried out in compliance with, statutory requirements.

The Works Approval Holder must comply with the Works Approval. Contravening a Works Approval Condition is an offence under s.55 of the EP Act.

### Responsibilities of Works Approval Holder

---

Separate to the requirements of this Works Approval, general obligations of Works Approval Holders are set out in the EP Act and the regulations made under the EP Act. For example, the Works Approval Holder must comply with the following provisions of the EP Act:

- the duties of an occupier under s.61; and
- restrictions on making certain changes to Prescribed Premises unless the changes are in accordance with a Works Approval, Licence, closure notice or environmental protection

notice (s.53).

Strict penalties apply for offences under the EP Act.

### Reporting of incidents

---

The Works Approval Holder has a duty to report to the Department all Discharges of Waste that have caused or are likely to cause Pollution, Material Environmental Harm or Serious Environmental Harm, in accordance with s.72 of the EP Act.

### Offences and defences

---

The EP Act and its regulations set out a number of offences including:

- Offence of emitting an Unreasonable Emission from any Premises under s.49.
- Offence of causing Pollution under s.49.
- Offence of dumping Waste under s.49A.
- Offence of discharging Waste in circumstances likely to cause Pollution under s.50.
- Offence of causing Serious Environmental Harm (s.50A) or Material Environmental Harm (s.50B).
- Offence of causing Emissions which do not comply with prescribed standards (s.51).
- Offences relating to Emissions or Discharges under regulations prescribed under the EP Act, including materials discharged under the *Environmental Protection (Unauthorised Discharges) Regulations 2004 (WA)*.
- Offences relating to noise under the *Environmental Protection (Noise) Regulations 1997 (WA)*.

Section 53 of the EP Act provides that a Works Approval Holder commits an offence if Emissions are caused, or altered, from a Prescribed Premises unless done in accordance with a Works Approval, Licence or the requirements of a closure notice or an environmental protection notice.

Defences to certain offences may be available to a Works Approval Holder and these are set out in the EP Act. Section 74A(b)(iii) provides that it is a defence to an offence for causing Pollution, in respect of an Emission, or for causing Serious Environmental Harm or Material Environmental Harm, or for discharging or abandoning Waste in water to which the public has access, if the Works Approval Holder can prove that an Emission or Discharge occurred in accordance with a Works Approval.

This Works Approval specifies the Emissions and Discharges, and the limits and Conditions which must be satisfied in respect of specified Emissions and Discharges, in order for the defence to offence provision to be available.

### Authorised Emissions and Discharges

---

The specified and general Emissions and Discharges from the Works authorised through this Works Approval are authorised to be conducted in accordance with the Conditions of this Works Approval.

### Amendment of Works Approval

---

The Works Approval Holder can apply to amend the Conditions of this Works Approval under s.59 of the EP Act. An application form for this purpose is available from DWER.

The CEO may also amend the Conditions of this Works Approval at any time on the initiative of the CEO without an application being made.

### Duration of Works Approval

---

The Works Approval will remain in force for the duration set out on the first page of this Works

Approval or until it is surrendered, suspended or revoked in accordance with s.59A of the EP Act.

#### Suspension or revocation

---

The CEO may suspend or revoke this Works Approval in accordance with s.59A of the EP Act.

## Definitions and interpretation

### Definitions

In this Works Approval, the terms in Table 1 have the meanings defined.

**Table 1: Definitions**

Term	Definition
AS/NZS 5667.1	means the Australian Standard AS/NZS 5667.1 Water Quality – Sampling – Guidance on the design of sampling programs, sampling techniques and the preservation and handling of samples
Books	has the same meaning given to that term under the EP Act.
CEO	means Chief Executive Officer. CEO for the purposes of notification means: Director General Department administering the <i>Environmental Protection Act 1986</i> Locked Bag 10 Joondalup DC WA 6919 <a href="mailto:info@dwer.wa.gov.au">info@dwer.wa.gov.au</a>
Condition	means a condition to which this Works Approval is subject under s.62 of the EP Act.
Department	means the department established under section 35 of the <i>Public Sector Management Act 1994</i> and designated as responsible for the administration of Part V, Division 3 of the EP Act.
Department Request	means a request for Books or other sources of information to be produced, made by an Inspector or the CEO to the Works Approval Holder in writing and sent to the Works Approval's address for notifications, as described at the front of this Works Approval, in relation to:  (a) compliance with the EP Act or this Works Approval; (b) the Books or other sources of information maintained in accordance with this Works Approval; or (c) the Books or other sources of information relating to Emissions from the Premises.
Discharge	has the same meaning given to that term under the EP Act.
DWER	Department of Water and Environmental Regulation
Emission	has the same meaning given to that term under the EP Act.
Environmental Harm	has the same meaning given to that term under the EP Act.
EP Act	means the <i>Environmental Protection Act 1986 (WA)</i> .
EP Regulations	means the <i>Environmental Protection Regulations 1987 (WA)</i> .
GL	means gigalitre
HVRF	means Heavy Vehicle Refueling Facility
Implementation Agreement or Decision	has the same meaning given to that term under the EP Act.

Inspector	means an inspector appointed by the CEO in accordance with s.88 of the EP Act.
Material Environmental Harm	has the same meaning given to that term under the EP Act.
Pollution	has the same meaning given to that term under the EP Act.
Premises	refers to the premises to which this Works Approval applies, as specified at the front of this Works Approval and as shown on the map in Schedule 1 to this Works Approval.
Prescribed Premises	has the same meaning given to that term under the EP Act.
Reportable Event	means an exceedance above the target limit specified in Column 4 of Table 6, in Schedule 3.
Serious Environmental Harm	has the same meaning given to that term under the EP Act.
Unreasonable Emission	has the same meaning given to that term under the EP Act.
Waste	has the same meaning given to that term under the EP Act.
Works	refers to the Works described in Schedule 2, at the locations shown in Schedule 1 of this Works Approval to be carried out at the Premises, subject to the Conditions.
Works Approval	refers to this document, which evidences the grant of the works approval by the CEO under s.54 of the EP Act, subject to the Conditions.
Works Approval Holder	refers to the occupier of the Premises being the person to whom this Works Approval has been granted, as specified at the front of this Works Approval.

## Interpretation

In this Works Approval:

- (a) the words 'including', 'includes' and 'include' will be read as if followed by the words 'without limitation';
- (b) where any word or phrase is given a defined meaning, any other part of speech or other grammatical form of that word or phrase has a corresponding meaning;
- (c) where tables are used in a Condition, each row in a table constitutes a separate Condition;
- (d) any reference to an Australian or other standard, guideline or code of practice in this Works Approval means the version of the standard, guideline or code of practice in force at the time of granting of this Works Approval and includes any amendments to the standard, guideline or code of practice which may occur from time to time during the course of the Works Approval; and
- (e) unless specified otherwise, any reference to a section of an Act refers to that section of the EP Act.

# Conditions

## Infrastructure and equipment

1. The Works Approval Holder must construct and/or install the infrastructure listed in Table 2 in accordance to the requirements set out in Table 2.
2. The works approval holder must not depart from the requirements specified in Table 2 except where:
  - (a) such a departure does not increase risks to public health, public amenity or the environment; and
  - (b) all other conditions in this works approval are still satisfied.
3. The works approval holder must within 28 calendar days of the infrastructure required by condition 1 being constructed:
  - (a) undertake an audit of their compliance with the requirements of Table 2; and
  - (b) prepare and submit to the CEO an Environmental Compliance Report on that compliance.
4. The Works Approval Holder must ensure the report required by Condition 3 includes, but is not limited to, the following:
  - (a) certification by a suitably qualified Professional Engineer that each item of infrastructure or component of infrastructure specified in Table 2 has been constructed with no material defects and to the requirements specified in Table 2;
  - (b) where a departure from the requirements specified in Table 2 occurs and is of a type allowed by Condition 2, the Works Approval Holder must provide to the CEO a description of, and explanation for, the departure along with the report required by Condition 3; and
  - (c) be signed by a person authorised to represent the Works Approval Holder and contains the printed name and position of that person within the company.

**Table 2: Infrastructure and equipment requirements table**

Infrastructure	Design and construction requirement / installation requirement	Infrastructure location
<p>Primary Crushing Facility (at Deposits C and D)</p>	<p>Rom pad, ROM bin, and primary crusher designed and constructed for a capacity of 25 Mtpa.</p> <p>The Primary Crushing Facility shall include dust control features:</p> <ul style="list-style-type: none"> <li>• A dry baghouse dust extraction system which will extract dust from the: <ul style="list-style-type: none"> <li>◦ Apron feeder head End/ROM bin;</li> <li>◦ Vibrating grizzly feed chute;</li> <li>◦ Vibrating grizzly feeder discharge chute;</li> <li>◦ Apron feeder dribble chute; and</li> <li>◦ Discharge conveyor skirts exit.</li> </ul> </li> <li>• High pressure water fogging combined with a water spray curtain system at the ROM feed hopper and coarse ore stockpile.</li> <li>• Two pulse spray arrangements in the apron feeder dribble chute.</li> <li>• Dual tier dust suppression sprays above the static grizzly.</li> <li>• Two water cannons located at the top of the ROM bin to assist in the washdown of the ROM bin.</li> <li>• One conveyor spray bar arrangement immediately downstream of the primary crusher discharge chute.</li> <li>• Two conveyor dust suppression sprays for the discharge chutes from the vibrating grizzly and baghouse.</li> <li>• Transfer chute at the inline transfer station fitted with pulse spray and misting spray within the chute.</li> <li>• The discharge conveyor fitted with primary and secondary belt scrapers at the head end to minimise carry back as a dust source.</li> </ul> <p>Constructed so that uncontaminated surface water / stormwater is directed away from the Process Plant.</p> <p>Constructed so that Processing Plant drainage is collected in open drains to earthen sedimentation / silt pond/s designed</p>	<p>Located as shown in Schedule 1: Map 2: Premises infrastructure location map – <i>Primary Crusher</i></p>

Infrastructure	Design and construction requirement / installation requirement	Infrastructure location
	<p>to contain a peak 1:10 year rainfall event.</p> <p>The areas under the primary crusher, conveyor transfer points and surge bin facility shall be concrete slab, graded such that washdown water is collected in concrete sediment/silt traps.</p>	
Overland conveyor	<p>Constructed to convey crushed ore from the Primary Crushing Facility at Deposit C and D to the processing plant at Hub A.</p> <p>Fitted with a cover 97% of the length.</p> <p>Fitted with primary and secondary belt scrapers at the head end to minimise carry back as a dust source.</p> <p>Fitted with sprays on conveyor transfer points.</p>	Located as shown in Schedule 1: Map 2: Premises infrastructure location map – <i>Overland conveyor</i>
Modification to the Hub A processing plant	<p>Secondary crushing facility designed to operate to a nameplate capacity of 3,200 tonnes per hour.</p> <p>Secondary crushing facility to retain its existing dust control measures including dry baghouse dust collector.</p> <p>Hub A surge bin equipped with two insertable dust collectors.</p> <p>Apron Feeders which control the discharge from the surge bin include dribble conveyors to capture carry back.</p> <p>The base level of the surge bin facility constructed with a concrete slab under the entire footprint to capture spillage and washdown, and draining to a concrete sump.</p>	Hub A located as shown in Schedule 1: Map 2: Premises infrastructure location map – <i>Existing Hub A</i>
Turee Creek dewatering discharge location	<p>Relocated 300 m downstream.</p> <p>Discharge outlet constructed to include a concrete stilling well and weir system leading to a rip rap lined ramp to a rip rap lined creek bed – designed to reduce flow rate and scouring from water delivered at up to 300 L/second.</p> <p>Flow metre installed and able to record volumes of water discharged at the dewater discharge point.</p>	Located as shown in Schedule 1: Map 3: Dewatering discharge points – <i>Proposed Turee Creek dewatering discharge point location.</i>
Deposit C and D dewatering discharge	Discharge outlet constructed to include a concrete stilling well and weir system leading to a rip rap lined ramp to a rip rap lined creek	Located as shown in Schedule 1: Map 3: Dewatering discharge

Infrastructure	Design and construction requirement / installation requirement	Infrastructure location
location	<p>bed – designed to reduce flow rate and scouring from water delivered at up to 300 L/second.</p> <p>Flow metre installed and able to record volumes of water discharged at the dewater discharge point.</p>	points – <i>Proposed Deposit C &amp; D Discharge Location</i>
Dewatering pipelines to Turee Creek dewatering discharge point, and Deposit C and D dewatering discharge point	<p>Bore dewatering header pipelines to have pressure relief valves fitted to them for over pressure protection.</p> <p>Leak detection installed by discharge flow meters connected to the site telemetry system including magnetic flow meters at the transfer pump station (1 for each pump and 1 on the header which receives the flow from each pump for cross checking) and another approximately 100-200m from the discharge outlets.</p>	N/A
Two mobile crushing and screening plants	<p>Terex Finlay J-1480 (or similar).</p> <p>Located within areas previously cleared for the sourcing of borrow material.</p> <p>Fitted with dust suppression spray system.</p>	N/A
Category 64 landfill	<p>Located more than 100 m from a watercourse (ephemeral or permanent) and no less than 3 m from the highest seasonal and expected-post-mining groundwater.</p> <p>Final location recorded on GIS mapping.</p> <p>Earthen bunds installed to divert stormwater away from the landfill.</p> <p>A sump or bunding constructed within the landfill to collect any surface water that may come into contact with waste.</p>	N/A
Heavy Vehicle Refuelling Facility (HVRF)	<p>Two x 200 kilolitre horizontal bulk fuel storage tanks which are above ground, self bunded (double skinned) and fitted with overfill protection.</p> <p>Concrete collection slabs installed under all areas at the HVRF where there is the potential for hydrocarbons to be spilled so that spills are directed to oily water collection sumps before being treated by an oily water separator.</p> <p>Constructed so that HVRF refuelling is on bunded concrete hardstand area. All piping</p>	Located as shown in Schedule 1: Map 2: Premises infrastructure location map - <i>Fuel Hub</i>

Infrastructure	Design and construction requirement / installation requirement	Infrastructure location
	<p>shall be above ground where possible in the hardstand area.</p> <p>Oily water collection and separation system designed and installed to achieve a maximum hydrocarbon concentration of 15mg/L in treated water.</p> <p>Constructed so that larger spills cause the oily water separator to shut down, preventing it from operating outside the designed parameters.</p>	

## Specified conditions

5. The Works Approval Holder must ensure that during construction and/or installation of the infrastructure listed in Table 2, stormwater is managed so that:
  - (a) clean surface water is diverted around construction work areas; and
  - (b) potentially contaminated waters are retained onsite via bunds or surface diversions.

## Time Limited Operational Phase

6. The Works Approval Holder may conduct operation of the Works for a period not exceeding 180 days from the date of submission of an Environmental Compliance Report for the works, or until such time as a Licence for the same is granted.
7. The Works Approval Holder must submit to the CEO a report on the time limited operations within 28 days of the completion date of time limited operations.
8. The Works Approval Holder must ensure the report required by condition 7 of this works approval includes at minimum the following:
  - (a) a summary of the time limited operations, including timeframes and production/processing amounts;
  - (b) a summary of monitoring results obtained during time limited operations under conditions 19 and 22.
  - (c) a summary of the environmental performance of all plant subject to this works approval and equipment as installed.

## Emissions

9. The Works Approval Holder must not cause any Emissions from the Works authorised through this works approval except for specified Emissions and general Emissions described in Table 3, subject to the exclusions, limitations or requirements specified in Table 3.

**Table 3: Authorised Emissions table**

Emission type	Exclusions/Limitations/Requirements
<b>Specified Emissions</b>	
Discharge of treated oily water	Subject to compliance with condition 17.
Discharge of surplus dewater	Subject to compliance with conditions 18, 19, 20, 21 and 22.
<b>General Emissions (excluding Specified Emissions)</b>	
Emissions which arise from undertaking the Works set out in Schedule 2 and the time limited operational phase of those Works as per Condition 6.	Emissions excluded from General Emissions are: <ul style="list-style-type: none"> <li>• Unreasonable Emissions; or</li> <li>• Emissions that result in, or are likely to result in, Pollution, Material Environmental Harm or Serious Environmental Harm; or</li> <li>• Discharges of Waste in circumstances likely to cause Pollution; or</li> <li>• Emissions that result, or are likely to result in, the Discharge or abandonment of Waste in water to which the public has access; or</li> <li>• Emissions or Discharges which do not comply with an Approved Policy; or</li> <li>• Emissions or Discharges which do not comply with prescribed standard; or</li> <li>• Emissions or Discharges which do not comply with the conditions in an Implementation Agreement or Decision; or</li> <li>• Emissions or Discharges the subject of offences under regulations prescribed under the EP Act, including materials discharged under the <i>Environmental Protection (Unauthorised Discharges) Regulations 2004</i>.</li> </ul>

### Operation of crushing and screening plants

- 10.** The Works Approval Holder must ensure that Category 12 mobile crushing and screening plants operated during the Time Limited Operational Phase are located within areas previously cleared for the sourcing of borrow material.

### Operation of Category 64 landfill

- 11.** The Works Approval Holder shall ensure that operation of the landfill during the Time Limited Operational Phase is in accordance with the requirements of conditions 12, 13, 14, 15 and 16.

12. The Works Approval Holder shall ensure that not more than 8,500 tonnes per year (pro rata) of waste is accepted within the Landfill.
13. The Works Approval Holder shall accept and bury only the following types of waste within the landfill:
  - (a) Clean Fill;
  - (b) Inert Waste Type 1;
  - (c) Inert Waste Type 2 (tyres and plastics); and
  - (d) Putrescible waste (wooden packaging and broken pallets only)
 as defined in the Landfill Definitions.
14. The Works Approval Holder shall ensure that the tipping area of the landfill is not greater than:
  - (a) 30 metres in length; and
  - (b) 2 metres above ground level in height.
15. The Works Approval Holder shall ensure that waste in the tipping area of the landfill is covered to prevent wind-blown waste with a dense, inert and incombustible material.
16. The Works Approval Holder shall manage stormwater on the landfill so that:
  - (a) it is diverted from areas of the site where there is waste; and
  - (b) water that has come into contact with waste is to be diverted into a sump on the site, or otherwise retained on the site.

### Discharge of treated oily water

17. The Works Approval Holder must ensure that the concentration of Total Recoverable Hydrocarbons in waters discharged from the premises during the Time Limited Operational Phase does not exceed 15 mg/L.

### Discharge of surplus dewater

18. The Works Approval Holder shall ensure that during the Time Limited Operational Phase, surplus of mine dewater extracted to facilitate mining of Deposit C and D is discharged to the environment in accordance with Table 4.

**Table 4: Discharge of surplus dewater**

Discharge location	Limits	Location reference map
Deposit C and D dewatering discharge location	6 GL/annum	Schedule 1: Map 2: Premises infrastructure location map.

### Dewatering discharge monitoring

19. During the Time Limited Operational Phase, the Works Approval Holder must undertake dewatering discharge monitoring in accordance with the requirements set out in Table 5.

**Table 5: Dewatering discharge monitoring**

Column 1	Column 2	Column 3	Column 4	Column 5
Sample location	Parameter	Units	Averaging Period	Frequency
Deposit C and D dewatering discharge point  (as shown in Schedule 1: Premises infrastructure location map)	Volume	kL	Monthly	Continuous
	Electrical Conductivity	µS/cm	Spot sample	Quarterly (at least 45 days between samples)
	pH <sup>1</sup>	pH units		
	Total Recoverable Hydrocarbons (mg/L)	mg/L		
	<u>Major ions</u> Sodium Potassium, Calcium, Magnesium, Chloride, Carbonate, Bicarbonate, Sulfate, Nitrate			
	<u>Metals</u> Aluminium Boron, Iron, Zinc, Arsenic, Chromium, Lead, Cadmium, Mercury, Nickel, Selenium, and Manganese			
	Total Suspended Solids			

Note 1: In-field NATA accredited analysis permitted.

- 20.** The Works Approval Holder must ensure that:
- (a) all water samples are collected and preserved in accordance with AS/NZS 5667.1;
  - (b) all laboratory samples are submitted to and tested by a laboratory with current NATA accreditation for the parameters being measured, unless indicated otherwise in the relevant table.
- 21.** The Works Approval Holder must record the results of all monitoring activity required by condition 19.

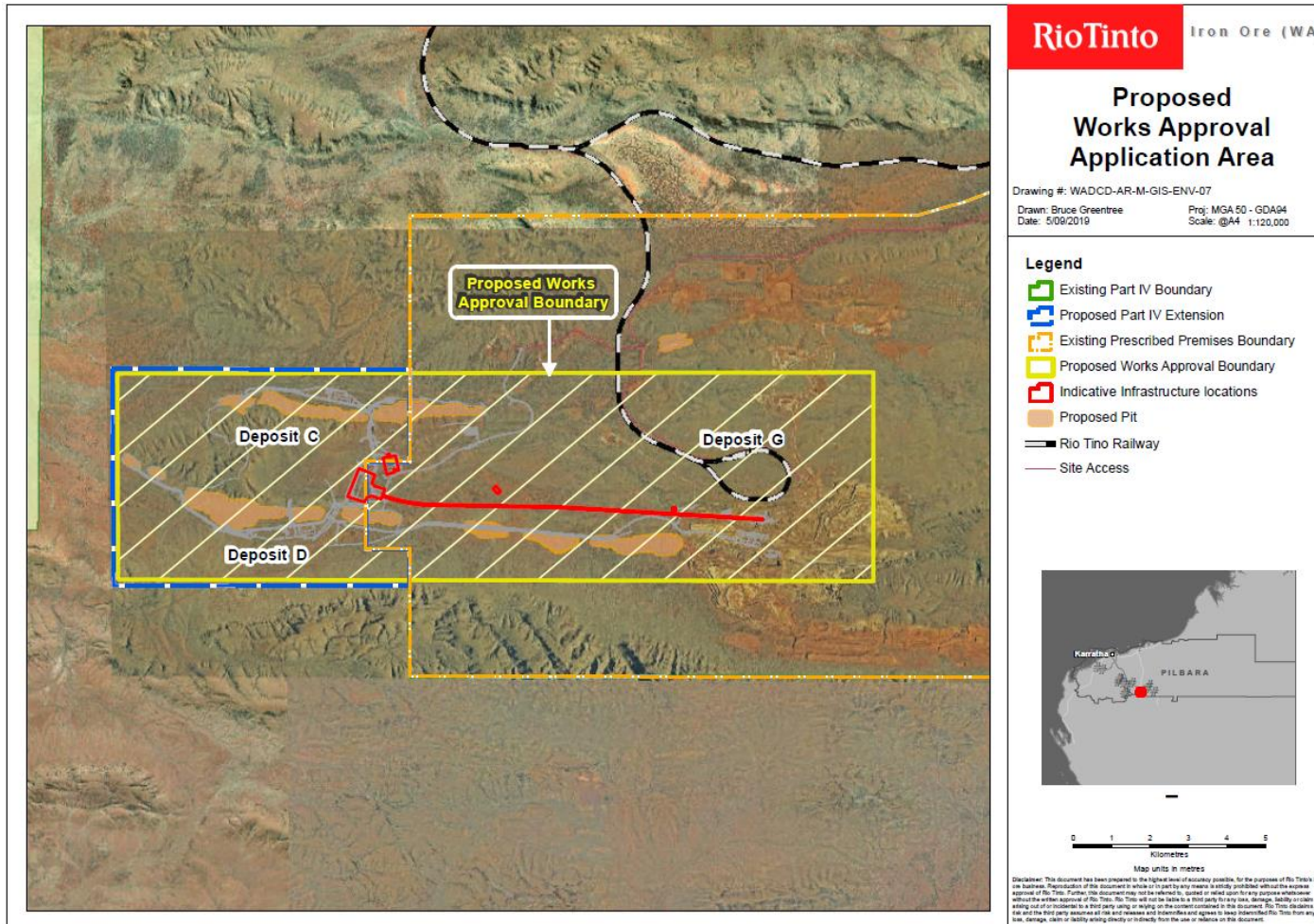
## Record-keeping

- 22.** The Works Approval Holder must maintain accurate Books including information, reports and data in relation to the Works and the Books must:
- (a) be legible;
  - (b) if amended, be amended in such a ways that the original and subsequent amendments remain legible or are capable of retrieval;
  - (c) be retained for at least 3 years from the date the Books were made;
  - (d) be available to be produced to an Inspector or the CEO.
- 23.** The Works Approval Holder must comply with a Department Request within 14 days from the date of the Department Request or such other period as agreed to by the Inspector or the CEO.

# Schedule 1: Maps

## Map 1: Premises boundary map

The premises boundary is drawn by the yellow line in the map below.



## Premises boundary

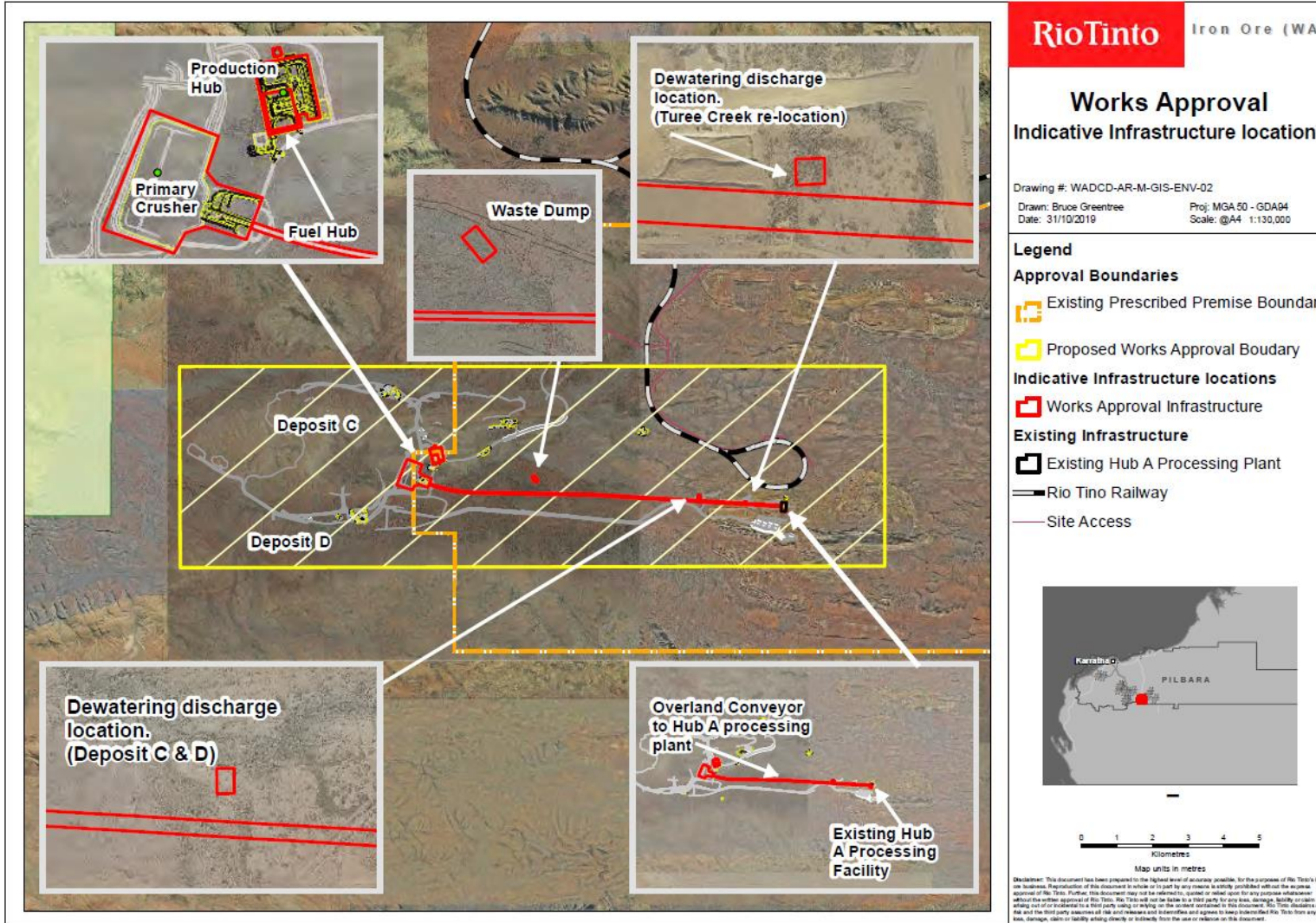
The Premises boundary is defined by the coordinates in Table 6.

**Table 6: Premises boundary coordinates**

<b>Easting (X)</b>	<b>Northing (Y)</b>
663629.4375	7440048.5
683315.9375	7440076.5
683314.5	7434651
663650.625	7434693.5
663629.4375	7440048.5
663629.4375	7440048.5
683315.9375	7440076.5
683314.5	7434651

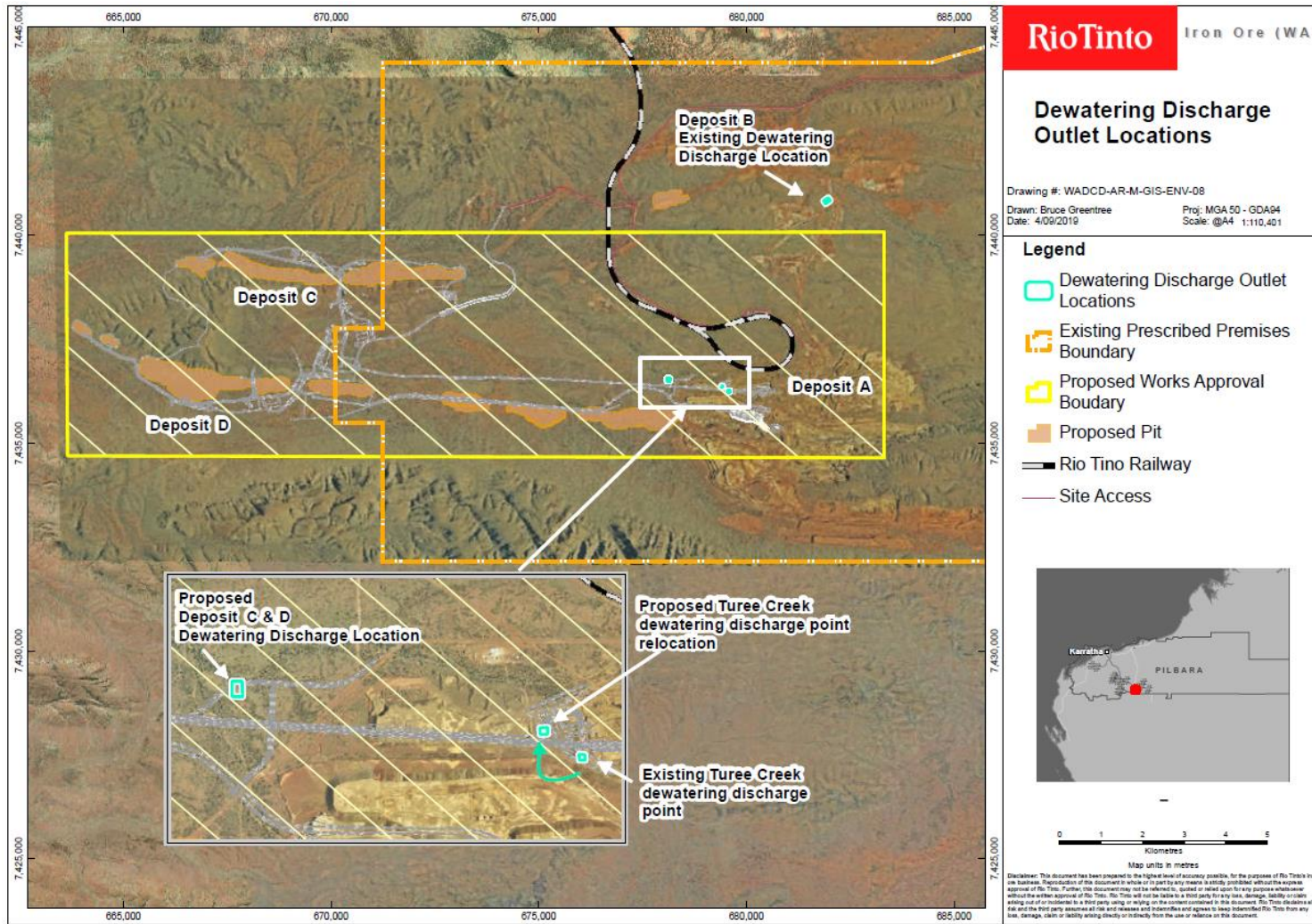
## Map 2: Premises infrastructure location map

The location of infrastructure is shown in the map below.



### Map 3: Dewatering discharge points

The location of dewatering discharge points is shown in the map below



## Schedule 2: Works

At the time of assessment, Emissions and Discharges from the Works listed in Table 6 were considered in the determination of the risk and related Conditions for the Works Approval.

**Table 7: Authorised Works**

Works
<p>Primary crushing facility at Deposits C and D designed to achieve capacity of 25 Mtpa:</p> <ul style="list-style-type: none"> <li>• Run of Mine (ROM) pad located centrally to Deposits C and D.</li> <li>• Fixed Primary Crusher including: <ul style="list-style-type: none"> <li>◦ ROM bin;</li> <li>◦ static grizzly;</li> <li>◦ apron feeder;</li> <li>◦ vibrating grizzly feeder; and</li> <li>◦ jaw crusher.</li> </ul> </li> <li>• Overland conveyor to Hub A processing plant.</li> </ul>
<p>Modification to the existing facilities at Hub A processing plant:</p> <ul style="list-style-type: none"> <li>• New surge bin facility with two outlets to provide independent ore streams for transfer of ore in variable amounts, to two existing conveyors.</li> <li>• Two existing secondary crushers replaced with two permanent plant crushers each with name plate capacity of 3,200 tonnes per hour and including the existing dry baghouse collector.</li> <li>• Removal of existing relocatable crushing/screening systems.</li> <li>• Modifications to existing plant conveyors.</li> </ul>
<p>Deposit C and D surplus dewater discharge point.</p>
<p>Water conveyance pipeline from Deposits C and D Turkeys nest to Deposit C and D dewatering discharge point.</p>
<p>Relocation of existing Turee Creek Dewatering Discharge Point 300 m downstream.</p>
<p>Two x Terex Finlay J-1480 (or similar) mobile crushing and screening plants.</p>
<p>Category 64 Landfill.</p>
<p>Heavy Vehicle Refuelling Facility with oily water collection and separator.</p>