



Licence number	L8977/2016/1
Licence holder	Kimberley Meat Company Pty Ltd
ACN	159 933 392
Registered business address	Unit 5, 186 Hampden Road NEDLANDS WA 6009
DWER file number	DER2016/001019-1
Duration	7/11/2016 to 6/11/2036
Date of issue	31/10/2016
Premises details	Colourstone Abattoir 210 Great Northern Highway Lot 210 on Plan 186082 ROEBUCK WA 6725

Prescribed premises category description (Schedule 1, <i>Environmental Protection Regulations 1987</i>)	Assessed production / design capacity
Category 15: Abattoir: premises on which animals are slaughtered.	32,340 liveweight tonnes per year
Category 55: Livestock saleyard or holding pen: premises on which live animals are held pending their sale, shipment or slaughter.	77,000 animals per year
Category 83: Fellmongering: premises on which animal skins or hides are dried, cured or stored.	77,000 skins or hides per year
Category 16: Rendering operations: premises on which substances from animal material are processed or extracted.	115.5 tonnes per year

This amended Licence is granted to the Licence Holder, subject to the attached conditions, on 16 October 2019, by:

MANAGER, PROCESS INDUSTRIES

an officer delegated under section 20 of the *Environmental Protection Act 1986* (WA)

Licence history

Date	Reference number	Summary of changes
31/10/2016	L8980/2016/1	Licence granted – approving category 15 (abattoir), 55 (livestock holding pen) and 83 (fellmongering) operations
16/10/2019		Licence amended to update Premises layout, change reporting period, clarify stormwater treatment, change to management of blood waste (addition of category 16 rendering), incorporate the RO plant and discharge point and transfer to new licence template.

Interpretation

In this Licence:

- (a) the words ‘including’, ‘includes’ and ‘include’ in conditions mean “including but not limited to”, and similar, as appropriate;
- (b) where any word or phrase is given a defined meaning, any other part of speech or other grammatical form of that word or phrase has a corresponding meaning;
- (c) where tables are used in a condition, each row in a table constitutes a separate condition;
- (d) any reference in this licence to an Australian or other standard, guideline, or code of practice, means the version of that document in force at the time of granting of this licence;
- (e) unless specified otherwise, any reference to a section of an Act refers to that section of the EP Act; and
- (f) unless specified otherwise, all definitions are in accordance with the EP Act.

NOTE: This licence requires specific conditions to be met but does not provide any implied authorisation for other emissions, discharges, or activities not specified in this licence.

Licence conditions

The Licence Holder must ensure that the following conditions are complied with:

Infrastructure and equipment

1. The Licence Holder must ensure that the site infrastructure and equipment listed in Table 1 and located at the corresponding infrastructure location is maintained and operated in accordance with the corresponding operational requirement set out in Table 1.

Table 1: Infrastructure and equipment requirements

Site infrastructure and equipment	Operational requirement	Infrastructure location
Abattoir building, including internal and external drainage infrastructure	<ul style="list-style-type: none"> • All wastewater generated from abattoir processing operations drains to the Premises WWTS for treatment; • All potentially contaminated stormwater on the Premises drains to the Premises WWTS for treatment; and • Clean stormwater is diverted via drains to the Premises Stormwater Pond or natural watercourses. 	As shown in Schedule 1: Premises stormwater plan
CAT 154 BC3000 blood cooker	<ul style="list-style-type: none"> • The Licence Holder must ensure no more than 115.5 tonnes per year of blood is rendered in the blood cooker; • The blood cooker must be located in an enclosed building with concrete flooring with drainage system that directs spills to the Premises WWTS; and • Exhaust gases from the blood cooker is emitted to air via the discharge stack located 12m above ground level. 	Not shown
HyDAF HD-35 WWTS	<ul style="list-style-type: none"> • Accepts all process wastewater from the abattoir floor and leachate from the lairage pens; • Consists of an enclosed impermeable treatment tank located on concrete bunded hardstand; and • Includes a rotary screen extractor to screen solids in the wastewater and a metal bin for the collection of solids. 	As shown in Schedule 1: Map of authorised discharge points (labelled 'Waste Water Screening')
All sumps, drains, and drainage screens	<ul style="list-style-type: none"> • Must be kept free of accumulated solid waste. 	Not shown
Lairage pens	<ul style="list-style-type: none"> • Roofed lairage pens with concrete floors and a central drain leading to a leachate sump; • Concrete bunded hardstand manure storage area; • Concrete leachate sump to contain drainage and wash water from the lairage pens; • Drainage and washwater is directed to the Premises WWTS for treatment; • Manure is collected from the pens on at least a 	As shown in Schedule 1: Map of authorised discharge points

Site infrastructure and equipment	Operational requirement	Infrastructure location
	daily basis and stored on the manure hardstand	
Fellmongering shed	<ul style="list-style-type: none"> Shed with sealed concrete floor graded with a fall to the centre of the floor and blind collection sump; Excess salt from fellmonger activities is swept up at the end of every day and stored for reuse or disposal offsite 	As shown in Schedule 1: Map of authorised discharge points (labelled 'Skins')
Wastewater Irrigation Storage Pond	<ul style="list-style-type: none"> HDPE-lined (1.5mm) and bunded pond; High water level alarm used to stop the blending pump or initiate transfer of water to irrigation; Volumetric flow meter on the pump for recording volumes of water pumped to the irrigation area; Managed such that: <ul style="list-style-type: none"> overtopping of the pond does not occur; a minimum top of embankment freeboard of 800mm is maintained; vegetation and floating debris (emergent or otherwise) are prevented from encroaching onto pond surfaces or inner pond embankments; and stormwater runoff is prevented from entering the pond. 	As shown in Schedule 1: Map of authorised discharge points
KMB1 Monitoring Bore	Bore used for the monitoring ambient groundwater quality.	As shown in Schedule 1: Map of authorised discharge points
Reverse Osmosis Plant	<ul style="list-style-type: none"> Containerised RO plant which treats bore water to remove silica; Maintained in accordance with manufacturer's specifications; and RO reject water is discharged directly into Premises Stormwater Dam 	As shown in Schedule 1: Map of authorised discharge points (labelled 'Fresh Water Treatment')

Waste and by-product storage, disposal and monitoring

2. The Licence Holder must ensure that wastes and by-products produced on the Premises, specified in Table 2 are managed in accordance with the corresponding requirements specified in Table 2.

Table 2: Waste and by-product management specifications

Waste and by-product type	Disposal strategy	Specified requirements
Downers	Removed from the Premises	(a) Removed offsite within 24 hours of the Licence Holder becoming aware of the dead animal;
Solid waste (manure) from lairage yards	Removed from the Premises	(b) To be stored in the concrete bunded manure hardstand area prior to removal offsite; (c) not to be stockpiled on the Premises for more than two days;
Paunch (undigested stomach contents)	Removed from the Premises	(d) To be stored in impermeable bins located on a hardstand prior to removal offsite;
Hides	Removed from the Premises	(e) To be stored in the fellmongering shed located undercover on the drained hardstand area;
Blood	Storage and treatment on the Premises prior to removal offsite; or Frozen and stored pending removal offsite	(f) Blood to be stored in a collection sump or tank for no more than 24 hours prior to rendering or freezing onsite; (g) Blood to be rendered in the CAT 154BC blood cooker must be done so within 24 hours of storage; (h) Rendered blood product to be removed offsite within 7 days of rendering;
Wastewater from the abattoir and rendering operations	Storage and treatment on the Premises	(i) all process wastewater must be directed to the Hy-DAF HD-35 WWTS for treatment;
Treated wastewater from the Hy-DAF HD-35 WWTS	Storage and treatment on the Premises prior to disposal offsite	(j) treated wastewater outputs subject to compliance with condition 5; (k) stored in the Wastewater Irrigation Storage Pond for blending with bore water then removed from the Premises to a licensed waste facility;
Sludge waste	Storage prior to removal offsite	(l) dispose of all removed sludge off the Premises to a licensed waste facility;
All solid waste types	Removed from the Premises	(m) all stored solid wastes must be removed from the Premises for disposal to a licensed waste facility by no later than 31 December each year.

3. The Licence Holder must record the total amount of waste and by-products removed from the Premises for each waste or by-product type listed in Table 3 in the corresponding unit, and for each corresponding time period set out in Table 3.

Table 3: Waste and by-products removed from the Premises

Waste and by-product type	Unit	Time period
Downers	Number of Downers	Each batch leaving the Premises
Solid waste (manure)	m ³ or tonnes	Each monthly period
Paunch	m ³ or tonnes	Each monthly period
Hides	Number or tonnes	Each monthly period
Blood (raw)	Tonnes	Each batch leaving the Premises
Blood (rendered)	tonnes	Each batch leaving the Premises
Sludge waste from the WWTS	m ³ or tonnes	Each batch leaving the Premises

Emissions and discharges

Authorised discharge points

4. The Licence Holder must ensure that the emissions specified in Table 4, are discharged only from the corresponding discharge point and only at the corresponding discharge point location.

Table 4: Authorised discharge points

Emission	Discharge point	Discharge point location
Treated and blended wastewater	W1: Wastewater Irrigation Storage Pond	As shown in Schedule 1: Map of authorised discharge points
Blood cooker exhaust gases	A1: Blood Cooker Stack	
RO reject water	W2: Premises Stormwater Dam	

Treated wastewater discharge limits

5. The Licence Holder must ensure that treated wastewater discharged from the Premises WWTS is less than or equal to the limits specified for parameters listed in Table 4.

Table 5: WWTS treatment limits

Discharge point	Parameter	Limit (including units)	Averaging period
E2: WWTS sample point As shown in Schedule 1: Map of authorised discharge points	5-day BOD	1,300 mg/L	Spot sample
	Total Suspended Solids	200 mg/L	
	Total Nitrogen	140 mg/L	
	Total Phosphorus	15 mg/L	

Monitoring

Treated wastewater monitoring

6. The Licence Holder must monitor emissions:

- (a) from each monitoring location;
- (b) for the corresponding parameter;
- (c) at the corresponding frequency;
- (d) for the corresponding averaging period;
- (e) in the corresponding unit; and
- (f) using the corresponding method,

as set out in Table 6.

Table 6: Emissions and discharge monitoring

Monitoring location	Parameter	Units	Frequency	Averaging period	Method	
					Sampling	Analysis
E1: WWTS flowmeter As shown in Schedule 1: Map of authorised discharge points	Volume of treated wastewater discharged	m ³	Daily	Monthly	AS 5667.1 AS5667.10	-
E2: WWTS sample point As shown in Schedule 1: Map of authorised discharge points	pH ¹	-	Monthly	Spot sample		NATA Accredited
	Total dissolved solids	mg/L				
	Total suspended solids					
	5-day BOD					
	Total Nitrogen					
	Total Phosphorus					
	Sodium					
	Calcium					
	Magnesium					
Electrical Conductivity	µS/cm					
E3: Wastewater Irrigation Storage Pond sample point As shown in Schedule 1: Map of authorised discharge points	Total suspended solids	mg/L				
	5-day BOD					
	Total Nitrogen					
	Total Phosphorus					

Note 1: In-field non-NATA accredited analysis permitted.

Ambient groundwater monitoring

7. The Licence Holder must monitor the groundwater for concentrations of the parameter listed in Table 7:
- at the corresponding monitoring location;
 - in the corresponding unit;
 - at no less that the corresponding frequency;
 - for the corresponding averaging period; and
 - using the corresponding method,
- as set out in Table 7.

Table 7: Monitoring of ambient groundwater concentrations

Monitoring bore	Parameter	Units	Frequency	Averaging period	Method	
					Sampling	Analysis
KMB1 As shown in Schedule 1: Map of authorised discharge points	Standing Water Level ¹	m (AHD) or m (BGL)	Quarterly	Instantaneous ¹	AS 5667.1 AS5667.11	NATA Accredited
	pH ¹	-		Instantaneous ¹ or spot sample		
	Total Dissolved Solids	mg/L		Spot sample		
	Total Nitrogen					
	Total Phosphorus					

Note 1: In-field non-NATA accredited analysis permitted.

8. The Licence Holder shall record the inputs and outputs from the Premises, in the corresponding unit, and for each corresponding time period set out in Table 8.

Table 8: Monitoring of Inputs and Outputs

Input / Output	Parameter	Units	Time period	Frequency
Animals received at the premises	Animals	Number	Annual	Each batch arriving at the premises
Animals slaughtered at the premises	Live weight of animals	Tonnes (estimated)	Annual	Estimated from number of livestock received at the premises

9. The Licence Holder must ensure that:
- all water samples are collected and preserved in accordance with AS/NZS 5667.1;
 - all wastewater sampling is conducted in accordance with AS/NZS 5667.10;
 - all groundwater sampling is conducted in accordance with AS/NZS 5667.11, using low-flow sampling; and
 - all laboratory samples are submitted to and tested by a laboratory with current NATA accreditation for the parameters being measured unless indicated otherwise in the Monitoring Requirements Table.

- 10.** The Licence Holder must ensure that:
- (a) monitoring is undertaken in each monthly period such that there are at least 15 days in between the days on which samples are taken in successive months; and
 - (b) monitoring is undertaken in each quarterly period such that there are at least 45 days in between the days on which samples are taken in successive quarters.

Records and reporting

- 11.** The Licence Holder must maintain accurate and auditable Books including the following records, information, reports, and data required by this licence:
- (a) the calculation of fees payable in respect of this Licence;
 - (b) any maintenance of infrastructure that is performed in the course of complying with condition 1 of this Licence;
 - (c) monitoring programmes undertaken in accordance with conditions 2, 3, 5, 6, 7, 8, 9 and 10 of this Licence; and
 - (d) complaints received under condition 13 of this Licence.
- 12.** The Books specified under condition 11 must:
- (a) be legible;
 - (b) if amended, be amended in such a way that the original version(s) and any subsequent amendments remain legible and are capable of retrieval;
 - (c) be retained by the Licence Holder for the duration of the Licence; and
 - (d) be available to be produced to an Inspector or the CEO as required.
- 13.** The Licence Holder must record the following information in relation to complaints received by the Licence Holder (whether received directly from a complainant or forwarded to them by the Department or another party) about any alleged emissions from the Premises:
- (a) the name and contact details of the complainant, (if provided);
 - (b) the time and date of the complaint;
 - (c) the complete details of the complaint and any other concerns or other issues raised; and
 - (d) the complete details and dates of any action taken by the Licence Holder to investigate or respond to any complaint.
- 14.** The Licence Holder must:
- (a) undertake an audit of their compliance with the conditions of this Licence during the preceding Annual Period; and
 - (b) prepare and submit to the CEO by no later than 28 February after the end of that Annual Period an Annual Audit Compliance Report in the approved form.
- 15.** The Licence Holder must submit to the CEO by no later than 28 February after the end of each Annual Period, an Annual Environmental Report for that Annual Period for the conditions listed in Table 9, and which provides information in accordance with the corresponding requirement set out in Table 9.

Table 9: Annual Environmental Report

Condition	Requirement
3	The Report must contain recorded quantities of wastes and by-products removed from the Premises
6	The Report must contain: (a) treated wastewater monitoring data in tabulated and graphical form including the sampling date; (b) a comparison of the monitoring data against the limits set in condition 5; and (c) copies of laboratory sample analysis reports.
7	The Report must contain: (a) groundwater monitoring data in tabulated and graphical formats including the sampling date; (b) an assessment and interpretation of the data including comparison to historical trends; and (c) copies of laboratory sample analysis reports.
8	The Report must contain recorded quantities of animal inputs and outputs from the Premises
-	The Report must contain a summary of complaints records for the reporting Annual Period.
-	The Report must contain any issues raised from inspections or incident responses during the reporting period together with details as to how these have been addressed / rectified or, if the required work has yet to be completed, how and when they will be completed / rectified.
-	The Report must contain any changes to site boundaries, location of groundwater monitoring bores, surface drainage channels and on-site or off-site impacts or pollution.

- 16.** The Licence Holder must comply with a Department Request, within 14 days from the date of the Department Request or such other period as agreed to by the Inspector or the CEO.

Definitions

In this Licence, the terms in Table 10 have the meanings defined.

Table 10: Definitions

Term	Definition
5-day BOD	5-day Biochemical Oxygen Demand
ACN	Australian Company Number
AHD	Australian Height Datum
Annual Audit Compliance Report (AACR)	means a report submitted in a format approved by the CEO (relevant guidelines and templates may be available on the Department's website).
Annual Period	a 12 month period commencing from 1 January to 31 December in that same year
Approved Form	the AACR Form template approved by the CEO for use and available via DWER's external website.
AS/NZS 5667.1	means the Australian Standard AS/NZS 5667.1 Water Quality – Sampling – Guidance of the Design of sampling programs, sampling techniques and the preservation and handling of samples
AS/NZS 5667.10	means the Australian Standard AS/NZS 5667.10 Water Quality – Sampling – Guidance on sampling of waste waters
AS/NZS 5667.11	means the Australian Standard AS/NZS 5667.11 <i>Water Quality – Sampling – Guidance on sampling of groundwaters</i>
Averaging Period	means the time over which a limit is measured or a monitoring result is obtained
BGL	Below ground level
Books	has the same meaning given to that term under the EP Act.
CEO	means Chief Executive Officer of the Department. "submit to / notify the CEO" (or similar), means either: Director General Department administering the <i>Environmental Protection Act 1986</i> Locked Bag 10 Joondalup DC WA 6919 or: info@dwer.wa.gov.au
Department	means the department established under section 35 of the <i>Public Sector Management Act 1994</i> (WA) and designated as responsible for the administration of the EP Act, which includes Part V Division 3.
discharge	has the same meaning given to that term under the EP Act.
Downer	an animal that has arrived at the Premises dead or that dies in the lairage pens (or similar) and is not fit for processing through the abattoir.
emission	has the same meaning given to that term under the EP Act.

Term	Definition
EP Act	<i>Environmental Protection Act 1986 (WA)</i>
EP Regulations	<i>Environmental Protection Regulations 1987 (WA)</i>
HDPE	High Density Poly Ethylene
Inspector	means an inspector appointed by the CEO in accordance with s. 88 of the EP Act
Licence	refers to this document, which evidences the grant of a licence by the CEO under section 57 of the EP Act, subject to the specified conditions contained within.
Licence Holder	refers to the occupier of the premises, being the person specified on the front of the licence as the person to whom this licence has been granted.
m ³	Cubic metres
NATA	National Association of Testing Authorities
Premises	refers to the Premises to which this Licence applies, as specified at the front of this Licence and as shown on the premises map(s) (Figures 1, 2 and 3) in Schedule 1 to this Licence.
Prescribed Premises	has the same meaning given to that term under the EP Act.
RO	Reverse Osmosis
spot sample	means a discrete sample representative at the time and place at which the sample is taken
Waste	has the same meaning given to that term under the EP Act.
WWTS	Means the HY-DAF wastewater treatment system designed to collect and treat wastewater generated from operations at the Premises.

END OF CONDITIONS

Caron Goodbourn
MANAGER, PROCESS INDUSTRIES

Officer delegated under section 20 of the *Environmental Protection Act 1986*

Schedule 1: Maps

Premises map

The boundary of the prescribed premises is shown in the map below (Figure 1).

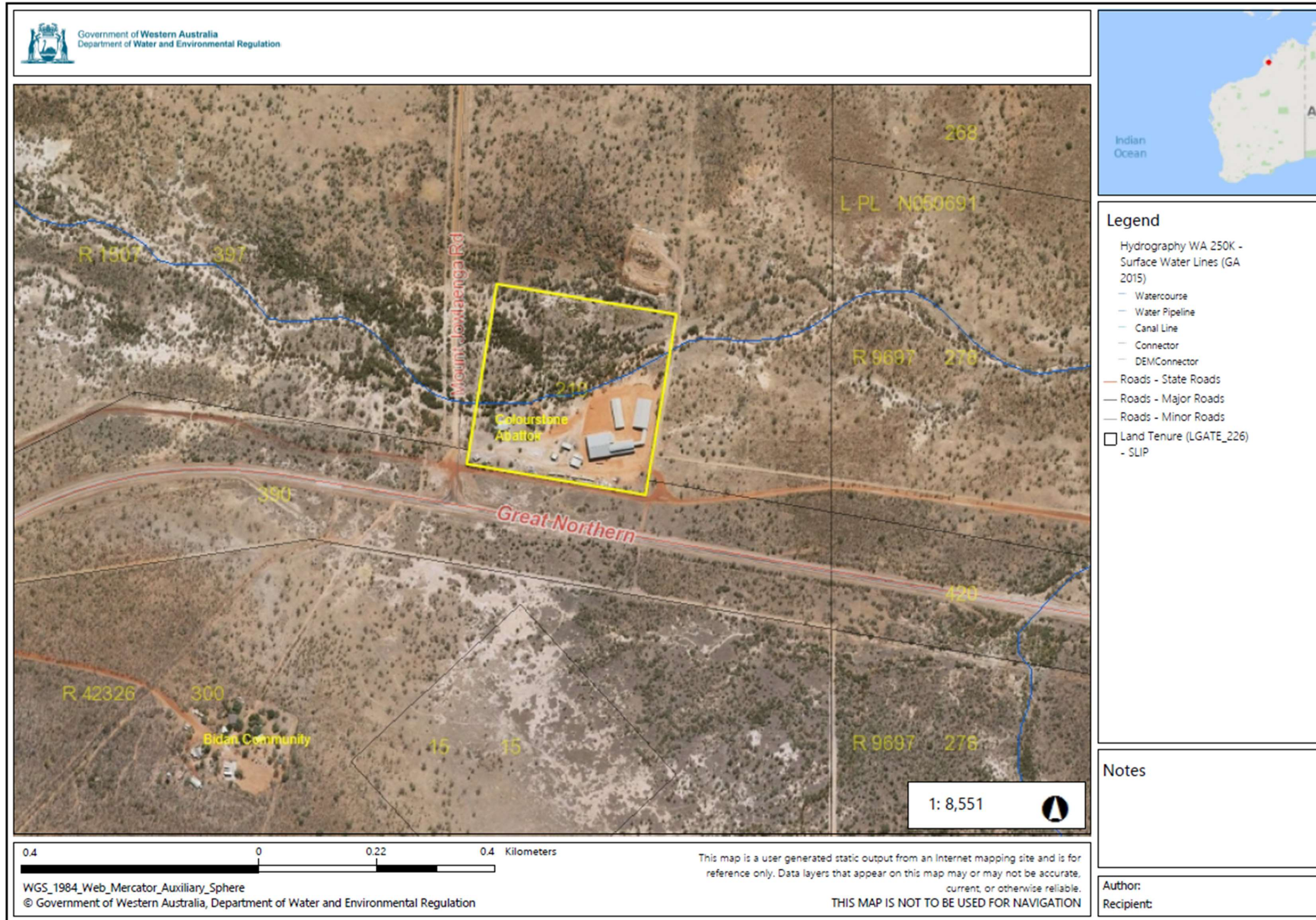


Figure 1: Map of the boundary of the prescribed premises

L8980/2016/1 Date of amendment: 16 October 2019

IR-T06 Licence template (v5.0) (September 2019)

Map of authorised discharge points

The Premises layout and map of authorised discharge points is shown in the map below (Figure 2).

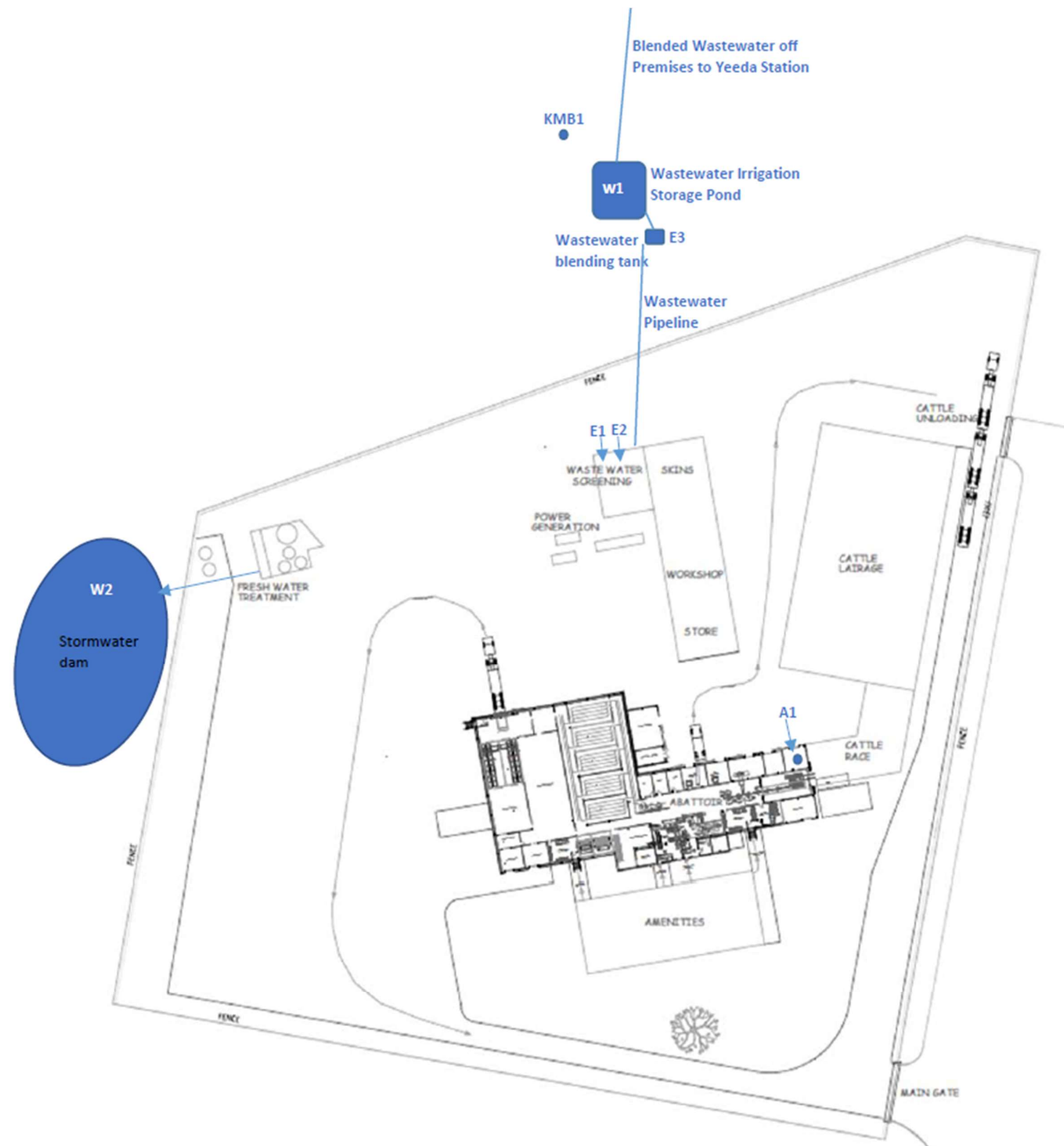


Figure 2: Premises layout and map of authorised discharge points

L8980/2016/1 Date of amendment: 16 October 2019

Premises stormwater plan

The premises stormwater plan is shown in the map below (Figure 3).

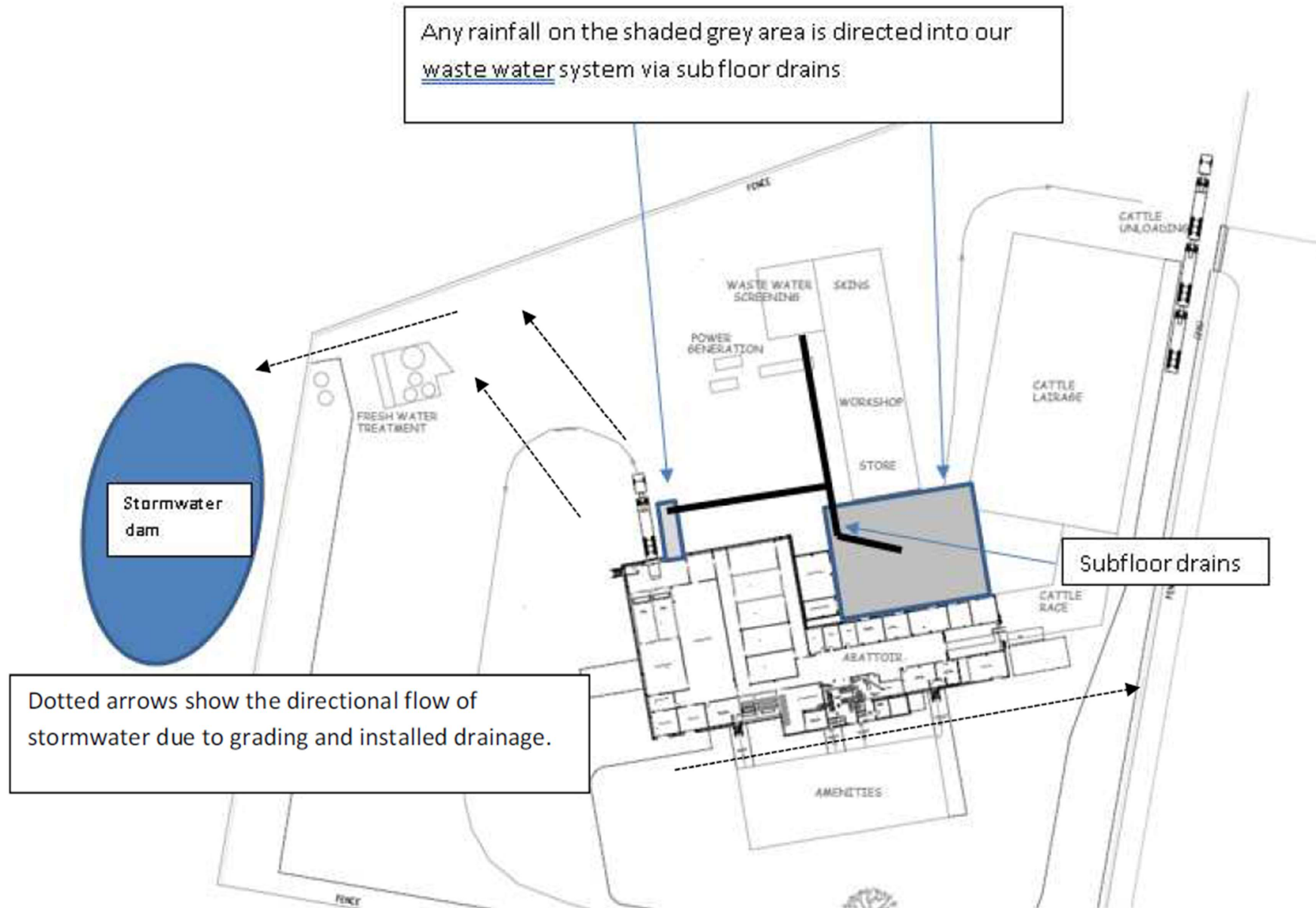


Figure 3: Premises stormwater plan