



**Works approval number** W3102/2025/1

**Works approval holder** CITIC Pacific Mining Management Pty Ltd  
**ACN** 119 578 371

**Registered business address** Level 7, 45 St Georges Terrace  
PERTH WA 6000

**DWER file number** INS-0003102

**Duration** 15/05/2026 to 14/05/2029

**Date of issue** 15/05/2026

**Premises details** Sino Iron Project Mine Site  
Mining tenements M08/123, M08/124, M08/125,  
M08/264, M08/265, M08/266, G08/53, G08/54 and  
L08/126  
  
MARDIE WA 6714  
As defined by the Premises map in Schedule 1

| Prescribed premises category description<br>(Schedule 1, <i>Environmental Protection Regulations 1987</i> ) | Assessed production / design capacity |
|---|---------------------------------------|
| Category 5: Processing or beneficiation of metallic or non-metallic ore                                     | 67,400,000 tonnes per annual period   |

This works approval is granted to the works approval holder, subject to the attached conditions, on 15 May 2026, by:

**MANAGER, RESOURCE INDUSTRIES**  
an officer delegated under section 20 of the *Environmental Protection Act 1986* (WA)

## Works approval history

| Date       | Reference number | Summary of changes      |
|------------|------------------|-------------------------|
| 15/05/2026 | W3102/2025/1     | Works approval granted. |

## Interpretation

In this works approval:

- (a) the words 'including', 'includes' and 'include' in conditions mean "including but not limited to", and similar, as appropriate;
- (b) where any word or phrase is given a defined meaning, any other part of speech or other grammatical form of that word or phrase has a corresponding meaning;
- (c) where tables are used in a condition, each row in a table constitutes a separate condition;
- (d) any reference to an Australian or other standard, guideline, or code of practice in this works approval:
  - (i) if dated, refers to that particular version; and
  - (ii) if not dated, refers to the latest version and therefore may be subject to change over time;
- (e) unless specified otherwise, any reference to a section of an Act refers to that section of the EP Act; and
- (f) unless specified otherwise, all definitions are in accordance with the EP Act.

**NOTE:** This works approval requires specific conditions to be met but does not provide any implied authorisation for other emissions, discharges, or activities not specified in this works approval.

# Works approval conditions

The works approval holder must ensure that the following conditions are complied with:

## Construction phase

### Infrastructure and equipment

1. The works approval holder must:
  - (a) construct and/or install the infrastructure and/or equipment;
  - (b) in accordance with the corresponding design and construction / installation requirements; and
  - (c) at the corresponding infrastructure location, as set out in Table 1.

**Table 1: Design and construction / installation requirements**

|  | Infrastructure | Design and construction / installation requirements   | Infrastructure location   |
|--|----------------|---|---|
| <b>TSF 3 (non-critical containment infrastructure)</b> |                |   |   |
| 1.   | Pipelines      | <u>Delivery pipeline</u><br>Steel pipe up to the tie-in station.  | As shown in Schedule 1, Figure 1 as 'TSF Slurry Pipeline'   |
|  |                | <u>Tailings distribution pipelines</u> <ul style="list-style-type: none"> <li>• Four HDPE pipelines from the booster station to the end of the line.</li> <li>• Steel skeleton reinforced polyethylene composite pipeline along the east embankment of TSF 3.</li> <li>• A bursting disc assembly to be installed on each pipeline to protect from over-pressurisation.</li> <li>• Each pipeline fitted with a flow meter and density meter.</li> </ul> | As shown in Schedule 1, Figure 2 as 'TSF 3 Tailings Distribution pipelines'<br><br>Two to be located within a pipeline corridor along the east embankment within TSF 3 catchment terminating at the north<br><br>Two to be located along the west embankment (both routed each side of TSF 2) also terminating at the north |
|  |                | <u>Decant return water pipelines</u> <ul style="list-style-type: none"> <li>• Two HDPE pipelines.</li> <li>• Fitted with a flow meter and data logger.</li> <li>• Pressure gauges used for leak detection monitoring.</li> </ul>  | As shown in Schedule 1, Figure 2  |
| 2.   | Spigots        | Combination of – <ul style="list-style-type: none"> <li>• Spigots at regularly spaced intervals (40 – 60 m) with knife gates; and</li> <li>• Full size single point discharge locations (approximately 300 m apart),</li> </ul>   | As shown in Schedule 1, Figure 2 as 'TSF 3 indicative spigots'  |

|    | Infrastructure                                | Design and construction / installation requirements  | Infrastructure location          |
|----|---|--|----------------------------------|
|    |   | along each tailings distribution pipeline.   |                                  |
| 3. | Decant infrastructure                         | <u>Stages 1A and 1B</u> <ul style="list-style-type: none"> <li>• Diesel-powered decant trailer pump consisting of floating intake.</li> <li>• Trailer pump fitted with a turbidity meter.</li> </ul> | As shown in Schedule 1, Figure 3 |
|    |   | <u>Stage 1C</u> <ul style="list-style-type: none"> <li>• Central causeway construction.</li> <li>• Two decant pumps (one duty, on standby) installed.</li> </ul>                                     | As shown in Schedule 1, Figure 4 |
| 4. | Underdrainage and seepage interception system | Submersible pump equipped with a flow meter to pump water out of seepage recovery sump ponds to the TSF 2 seepage collection sump.   | Not shown                        |

2. The works approval holder must:
- construct the critical containment infrastructure;
  - in accordance with the corresponding design and construction requirements; and
  - at the corresponding infrastructure location, as set out in Table 2.

**Table 2: Critical containment infrastructure design and construction requirements**

|                                      | Infrastructure or equipment | Design and construction requirements   | Infrastructure location   |
|--------------------------------------|-----------------------------|--|---|
| <b>TSF 3 critical infrastructure</b> |                             |  |   |
| 1                                    | TSF 3 perimeter embankment  | <ul style="list-style-type: none"> <li>• Downstream raise construction method in three stages: <ul style="list-style-type: none"> <li>○ Stage 1A embankment level to RL 26.0 m;</li> <li>○ Stage 1B embankment level to RL 31.0 m; and</li> <li>○ Stage 1C embankment level to RL 36.0 m.</li> </ul> </li> <li>• Embankments primarily constructed using C3 (gap-graded, free-draining) material with a maximum layer thickness of 500 mm to 1,500 mm and traffic compacted by loaded haul trucks.</li> <li>• Upstream slope constructed with a minimum of 7 m wide zone of C2 material (low permeable material) which is: <ul style="list-style-type: none"> <li>○ at least 300 mm thick;</li> <li>○ has a coefficient of permeability of <math>1 \times 10^{-7}</math> m/s or less;</li> <li>○ is moisture conditioned and compacted to</li> </ul> </li> </ul> | <p>As shown in Schedule 1, Figures 5, 6 and 7</p> <p>Where the temporary berm Zone C# is Zone C2 material</p> |

|   | Infrastructure or equipment                   | Design and construction requirements  | Infrastructure location                     |
|---|---|---|---|
|   |   | <p>achieve a minimum density ratio of at least 95% of Standard Maximum Dry Density; and</p> <ul style="list-style-type: none"> <li>○ within the range of -2% / +3% of Optimum Moisture Content.</li> </ul>  |   |
| 2 | Underdrainage and seepage interception system | <ul style="list-style-type: none"> <li>• A cut-off trench excavated into the in-situ foundation and backfilled with low permeability fill.</li> <li>• Underdrainage system consisting of finger drains, upstream and downstream toe drain.</li> <li>• Toe drain constructed along the upstream toe of the western and northern embankments where the cut-off trench is present.</li> <li>• Main collector drains located within the TSF 3 Stage 1A basin extent creek lines.</li> <li>• Toe drain and main collectors drain by gravity into one of three seepage collector drains. From here, a solid pipe to pass under the embankment in a structural fill and fill trench to beyond the final closure downstream embankment toe to three seepage recovery sump ponds.</li> <li>• Three HDPE lined seepage recovery sump ponds excavated below natural ground surface with a downstream spillway located at grade.</li> </ul> | As shown in Schedule 1, Figures 8, 9 and 10 |

### Compliance reporting (non-critical containment infrastructure)

3. The works approval holder must within 30 calendar days of all items or stages of infrastructure or equipment required by condition 1 being constructed and/or installed:
  - (a) undertake an audit of their compliance with the requirements of condition 1; and
  - (b) prepare and submit to the CEO an Environmental Compliance Report on that compliance.
  
4. The Environmental Compliance Report required by condition 3, must include as a minimum the following:
  - (a) certification by a suitably qualified geotechnical engineer that the items of infrastructure or component(s) thereof, as specified in condition 1, have been constructed in accordance with the relevant requirements specified in condition 1;
  - (b) as constructed plans and a detailed site plan for each item of infrastructure or component of infrastructure specified in condition 1;
  - (c) photographic evidence of the installation of the infrastructure; and
  - (d) be signed by a person authorised to represent the works approval holder and contains the printed name and position of that person.

## Critical Containment Infrastructure reporting

5. The works approval holder must within 30 calendar days of all items or stages of infrastructure or equipment required by condition 2 being constructed and/or installed:
  - (a) undertake an audit of their compliance with the requirements of condition 2; and
  - (b) prepare and submit to the CEO a Critical Containment Infrastructure Report on that compliance.
  
6. The Critical Containment Infrastructure Report required by condition 5 must include as a minimum the following:
  - (a) certification by a suitably qualified geotechnical engineer that each item of critical containment infrastructure or component thereof, as specified in condition 2, has been built and installed in accordance with the requirements specified in condition 2;
  - (b) as constructed plans and a detailed site plan showing the location and dimensions for each item of critical containment infrastructure or component thereof, as specified in condition 2;
  - (c) photographic evidence of the installation of the infrastructure; and
  - (d) be signed by a person authorised to represent the works approval holder and contains the printed name and position of that person.
  
7. Subject to conditions 3 to 5, where an item of infrastructure or component of infrastructure has been certified as not being constructed, or does not comply with corresponding requirements, or contains material defects, the works approval holder must:
  - (a) correct the non-compliant or defective works, prior to re-certifying in accordance with conditions 4(a) and/or 6(a); or
  - (b) provide to the CEO a description of, and explanation for, any departures from the requirements specified in Table 1 and/or Table 2 that do not require recertification and do not constitute a material defect along with the report required by conditions 4 and 6.

## Compliance reporting – bore construction and baseline groundwater monitoring

8. The works approval holder must, within 30 calendar days of the monitoring bores and seepage recovery bores shown in Figure 11 being constructed, submit to the CEO a bore construction report. The report must include but not be limited to:
  - (a) appropriate location and number of bores to be assessed, identified and/or verified by a suitably qualified hydrogeologist supported by identification of key environmental receptors, interpretation of groundwater modelling and hydrogeological information available, including geological and geophysical assessments;
  - (b) bore logs to demonstrate compliance with *ASTM D5092/D5092M-16* for each bore;
  - (c) demonstrating that the selected screen interval for each monitoring bore is representative of the hydrostratigraphic unit(s) expected to receive seepage from TSF 3, and that the bores are fit-for-purpose for detecting seepage migration both vertically and laterally;

- (d) a map clearing showing the location and label of installed groundwater monitoring bores and seepage recovery bores;
  - (e) justification on whether the single-screen bores are appropriate given the expected seepage pathways and the sites vertically layered groundwater system; and
  - (f) evidence demonstrated through aquifer pump testing or other hydrogeological method, that the recovery bores have sufficient capacity and influence to control mounding and intercept seepage under conservative (high seepage / degraded drain) scenarios.
9. The works approval holder must within 30 days of the groundwater monitoring bores being constructed, and prior to environmental commissioning of TSF 3, conduct baseline sampling (at least two monitoring events) for the monitoring bores and related parameters specified in Table 7, in accordance with Schedule B2 (Section 5.4 and 8.2.4) of the *Assessment of Site Contamination NEPM*.

## Environmental commissioning phase

### Environmental commissioning requirements

10. The works approval holder may only commence environmental commissioning of an item of infrastructure and/or equipment listed in Table 3 once the Environmental Compliance Report has been submitted for that item of infrastructure in accordance with conditions 3 and 4 of this works approval.
11. The works approval holder may only commence environmental commissioning of an item of infrastructure and/or equipment identified in condition 2:
- (a) once the Critical Containment Infrastructure Report has been submitted for that item of infrastructure in accordance with conditions 5 and 6 of this works approval; and
  - (b) the CEO has notified the works approval holder that the Critical Containment Infrastructure Report required by conditions 5 and 6 meets the requirements of the works approval.
12. Any environmental commissioning activities undertaken for an item of infrastructure specified in Table 3 may only be carried out:
- (a) in accordance with the corresponding commissioning requirements; and
  - (b) for the corresponding authorised commissioning duration.

**Table 3: Environmental commissioning requirements**

|   | Infrastructure and equipment   | Commissioning requirements   | Authorised commissioning duration                        |
|---|--|--|--|
| 1 | TSF 3  | <ul style="list-style-type: none"> <li>Subject to completing the requirements of conditions 5 and 6 for the perimeter embankment (Stage 1A); upstream slope; and underdrainage and seepage interception system.</li> <li>Subject to completing the requirements of conditions 8 and 9.</li> </ul>  | For a period not exceeding 30 calendar days in aggregate |
| 2 | Delivery pipeline, tailings distribution pipelines and decant return water pipelines | <ul style="list-style-type: none"> <li>Subject to TSF 3 completing the requirements of row 1 of this table.</li> <li>Subject to completing the requirements of conditions 3 and 4 for this infrastructure.</li> <li>Visual inspection of pipelines to check for leaks or any other issues.</li> <li>All flow meters to be tested and calibrated in accordance with manufacturer's specifications.</li> </ul> |  |
| 3 | Spigots  | <ul style="list-style-type: none"> <li>Subject to TSF 3 completing the requirements of row 1 of this table.</li> <li>Subject to completing the requirements of conditions 3 and 4 for this infrastructure.</li> </ul>  |  |

13. During environmental commissioning, the works approval holder must ensure that the emission specified in Table 4, is discharged only from the corresponding discharge points and only at the corresponding discharge point locations.

**Table 4: Authorised discharge point during environmental commissioning**

| Emission           | Discharge point   | Discharge point location  |
|--------------------|---|---|
| Thickened tailings | Combination of spigots at regularly spaced intervals along the embankments and single point locations | At the location shown in Schedule 1, Figure 2 as 'TSF 3 indicative spigots' |

### Environmental commissioning reporting

14. The works approval holder must submit to the CEO an Environmental Commissioning Report within 30 calendar days of the completion date of environmental commissioning for all items of infrastructure specified in Table 3.
15. The works approval holder must ensure the Environmental Commissioning Report required by condition 14 of this works approval includes the following:
- a summary of the environmental commissioning activities undertaken, including timeframes, volumes of tailings discharged into TSF 3, tailings stream solid

- content, water returned to the collection sump, and volume of decant and seepage water discharged via emission point DC2;
- (b) a summary of the environmental performance of each item of infrastructure or equipment as constructed or installed (as applicable), which at minimum includes records detailing the:
    - (i) commissioning of the infrastructure; and
    - (ii) testing of the infrastructure.
  - (c) a review of the works approval holder's performance and compliance against the conditions of this works approval; and
  - (d) where they have not been met, measures proposed to meet the manufacturer's design specifications and the conditions of this works approval, together with timeframes for implementing the proposed measures.

## Time limited operations phase

### Commencement and duration

- 16. The works approval holder may only commence time limited operations for an item of infrastructure identified in conditions 1 and 2:
  - (a) where the item of infrastructure is not authorised to undertake environmental commissioning, the Environmental Compliance Report as required by conditions 3 and 4 has been submitted by the works approval holder for that item of infrastructure; and
  - (b) where the item of infrastructure is authorised to undertake environmental commissioning under condition 12, the Environmental Commissioning Report for that item of infrastructure as required by conditions 14 and 15 has been submitted by the works approval holder.
- 17. The works approval holder may conduct time limited operations for an item of infrastructure specified in condition 18:
  - (a) for a period not exceeding 180 calendar days from the day the works approval holder meets the requirements of condition 16 for that item of infrastructure; or
  - (b) until such time as a licence for that item of infrastructure is granted in accordance with Part V of the *Environmental Protection Act 1986*, if one is granted before the end of the period specified in condition 17(a).

### Time limited operations requirements

- 18. During time limited operations, the works approval holder must ensure that the premises infrastructure and equipment listed in Table 5 and located at the corresponding infrastructure location is maintained and operated in accordance with the corresponding operational requirement set out in Table 5.

**Table 5: Infrastructure and equipment requirements during time limited operations**

| Site infrastructure and equipment                       | Operational requirement  | Infrastructure location                    |
|---|--|--|
| TSF 3   | <ul style="list-style-type: none"> <li>• Perimeter embankment: <ul style="list-style-type: none"> <li>○ Stage 1A embankment level to RL 26.0 m;</li> <li>○ Stage 1B embankment level to RL 31.0 m; and</li> <li>○ Stage 1C embankment level to RL 36.0 m.</li> </ul> </li> <li>• To be maintained as per the design and construction / installation requirements in conditions 1 and 2.</li> <li>• Maintain a freeboard of 1 m along the perimeter embankment.</li> <li>• Sub-aerial deposition of tailings into TSF 3, using a combination of spigots at regularly spaced intervals along the embankments and single point locations.</li> <li>• Active beach regularly rotated around TSF 3 to ensure the supernatant pond is centrally located.</li> <li>• Decant water pumped to the tailings thickener overflow for reuse in the processing.</li> </ul> | As shown in Schedule 1, Figures 1, 2 and 7 |
| Underdrainage and seepage interception system           | <ul style="list-style-type: none"> <li>• To be maintained as per the design and construction / installation requirements in conditions 1 and 2.</li> <li>• Underdrainage water collected in the sumps to be pumped via a submersible pump to the TSF 2 seepage collection sump.</li> </ul>   | As shown in Schedule 1, Figure 10          |
| Tailings distribution and decant return water pipelines | <ul style="list-style-type: none"> <li>• To be maintained as per the design and construction / installation requirements in condition 1.</li> </ul>  | As shown in Schedule 1, Figure 2           |

19. During time limited operations, the works approval holder must ensure that the emission specified in Table 6, is discharged only from the corresponding discharge points and only at the corresponding discharge point locations.

**Table 6: Authorised discharge point during environmental commissioning**

| Emission           | Discharge point   | Discharge point location  |
|--------------------|---|---|
| Thickened tailings | Combination of spigots at regularly spaced intervals along the embankments and single point locations | At the location shown in Schedule 1, Figure 2 as 'TSF 3 indicative spigots' |

## Monitoring during time limited operations

20. The works approval holder must monitor the groundwater during time limited operations for concentrations of the identified parameters in accordance with Table 7.

**Table 7: Groundwater monitoring during time limited operations<sup>3</sup>**

| Monitoring location   | Parameter                                    | Unit     | Frequency | Method   |
|---|--|----------|-----------|--|
| <b>Field measurements</b>   |  |          |           |  |
| <u>Monitoring bores:</u><br>M-01<br>M-02<br>M-03<br>M-04<br>M-05<br>M-06<br>M-07<br>M-08<br>M-09<br>M-10<br>M-11<br>M-12<br>09NC430<br>As depicted in<br>Schedule 1,<br>Figure 11 | Standing Water Level <sup>1, 2</sup>         | mbgl     | Monthly   | Spot sample in accordance with AS/NZS 5667.1 and AS/NZS 5667.11<br><br>By a NATA accredited laboratory |
|   | Oxidation Reduction Potential <sup>1</sup>   | mV       | Quarterly |  |
|   | pH <sup>1</sup>                              | pH units |           |  |
|   | Dissolved Oxygen <sup>1</sup>                | mg/L     |           |  |
|   | Temperature <sup>1</sup>                     | °C       |           |  |
|   | Electrical Conductivity <sup>1</sup>         | µS/cm    |           |  |
|   |  |          |           |  |
|   |  |          |           |  |
| <b>General water quality parameter</b>  |  |          |           |  |
| <u>Monitoring bores:</u><br>M-01<br>M-02<br>M-03<br>M-04<br>M-05<br>M-06<br>M-07<br>M-08<br>M-09<br>M-10<br>M-11  | Total Dissolved Solids                       | mg/L     | Quarterly | Spot sample in accordance with AS/NZS 5667.1 and AS/NZS 5667.11<br><br>By a NATA accredited laboratory |
|   | Acrylamide                                   |          |           |  |
|   | Major Cations:                               |          |           |  |
|   | Calcium                                      |          |           |  |
|   | Magnesium                                    |          |           |  |
|   | Sodium                                       |          |           |  |
|   | Potassium                                    |          |           |  |
|   | Major Anions:                                |          |           |  |
|   | Chloride                                     |          |           |  |
|   | Sulphate (SO <sub>4</sub> <sup>-2</sup> )    |          |           |  |
|   | Bicarbonate (HCO <sub>3</sub> <sup>-</sup> ) |          |           |  |

| Monitoring location   | Parameter                                  | Unit | Frequency | Method   |
|---|--|------|-----------|--|
| M-12<br>09NC430<br>As depicted in<br>Schedule 1,<br>Figure 11   | Carbonate (CO <sub>3</sub> <sup>2-</sup> ) |      |           |  |
|   | Total Nitrogen                             |      |           |  |
|   | Nitrate as N                               |      |           |  |
|   | Nitrite as N                               |      |           |  |
|   | Ammonia                                    |      |           |  |
|   | Total Sulfur                               |      |           |  |
|   | Total Alkalinity                           |      |           |  |
| <b>Metals (dissolved)</b>   |  |      |           |  |
| <u>Monitoring bores:</u><br>M-01<br>M-02<br>M-03<br>M-04<br>M-05<br>M-06<br>M-07<br>M-08<br>M-09<br>M-10<br>M-11<br>M-12<br>09NC430<br>As depicted in<br>Schedule 1,<br>Figure 11 | Aluminium                                  | mg/L | Quarterly | Spot sample in<br>accordance with<br>AS/NZS 5667.1 and<br>AS/NZS 5667.11<br><br>By a NATA accredited<br>laboratory |
|   | Cadmium                                    |      |           |  |
|   | Chromium (hexavalent)                      |      |           |  |
|   | Cobalt                                     |      |           |  |
|   | Copper                                     |      |           |  |
|   | Iron                                       |      |           |  |
|   | Lead                                       |      |           |  |
|   | Manganese                                  |      |           |  |
|   | Mercury                                    |      |           |  |
|   | Nickel                                     |      |           |  |
|   | Zinc                                       |      |           |  |

Note 1: In-field non-NATA accredited analysis permitted.

Note 2: Standing Water Level should be determined prior to collection of other water samples.

Note 3: Level of detection is required to be sufficient to enable comparison with ANZG 2018 guidelines.

- 21.** The works approval holder must ensure that:
- monthly monitoring is undertaken at least 15 days apart; and
  - quarterly monitoring is undertaken at least 45 days apart.
- 22.** The works approval holder must record the results of all monitoring activity required by condition 20.

### Water balance during time limited operations

23. The works approval holder must undertake a water balance for TSF 3 each monthly period, and (as a minimum) record the following information:
- site rainfall;
  - evaporation rate;
  - decant water recovery volumes;
  - seepage recovery volumes from seepage infrastructure;
  - volume of tailings deposited;
  - tailings solid content (w/w %);
  - volume of water retained in tailings; and
  - calculated seepage rates.

### Inspections

24. The works approval holder must conduct visual inspections of the infrastructure during commissioning and time limited operations at the frequency specified in Table 8.

**Table 8: Inspections of infrastructure**

| Infrastructure  | Type of inspection                                  | Frequency |
|---|---|-----------|
| TSF 3 embankment  | To confirm required freeboard capacity is available | Daily     |
| Tailings distribution and decant return water pipelines | Integrity check / loss of containment               |           |

### Tailings characterisation

25. During the first 30 days of time limited operations, the works approval holder must collect at least 10 individual representative tailings samples, including pore water, to determine the likely behavior of elements under a range of leaching conditions, which may include, but not be limited to:
- testing using the LEAF Test Method 1313 pH-dependent leaching test (United States Environmental Protection Agency, 2017);
  - testing using LEAF Test Method 1314 liquid to solid ratio (United States Environmental Protection Agency, 2017);
  - geotechnical characterisation of tailings including: particle size distribution, volume of solids, settling test (drained and undrained), air drying test and hydraulic conductivity of the same tailings tested in (a); and
  - testing for the contaminants listed in Table 9.

All test results shall be collated and provided in a report to the CEO no later than 60 days after the sample results become available.

**Table 9: Tailings characterisation parameters**

| Stream                                      | Contaminants     |                 |   |
|---|------------------|-----------------|---|
| Tailings leachate and pore water (mg/L)     | Silver (Ag)      | Iron (Fe)       | Antimony (Sb)                             |
|   | Aluminium (Al)   | Mercury (Hg)    | Selenium (Se)                             |
|   | Arsenic (As)     | Potassium (K)   | Silicon (Si)                              |
|   | Barium (Ba)      | Magnesium (Mg)  | Tin (Sn)                                  |
|   | Boron (B)        | Manganese (Mn)  | Strontium (Sr)                            |
|   | Carbon total     | Molybdenum (Mo) | Zinc (Zn)                                 |
|   | Carbon carbonate | Sodium (Na)     | Total Dissolved Solids                    |
|   | Calcium (Ca)     | Nickel (Ni)     | Total Nitrogen                            |
|   | Cadmium (Cd)     | Phosphorus (P)  | Sulfur total                              |
|   | Cobalt (Co)      | Lead (Pb)       | Sulphate (SO <sub>4</sub> <sup>-2</sup> ) |
|   | Chromium (Cr)    | Copper (Cu)     | Acrylamide                                |
| Tailings leachate and pore water (pH units) | pH               |                 |   |

### Time limited operations - compliance reporting

- 26.** The works approval holder must submit to the CEO a report on the time limited operations within 30 calendar days of the completion date of time limited operations or 90 calendar days before the expiration date of the works approval, whichever is the sooner.
- 27.** The works approval holder must ensure the report required by condition 26 includes the following:
- a summary of the time limited operations, including timeframes, volume of tailings discharged into TSF 3, tailings stream solid content, and water returned to the collection sump;
  - interpretation of ambient groundwater monitoring results obtained during time limited operations under condition 20 and a comparison against the baseline results from condition 9;
  - volume of TSF 3 decant and seepage water discharged via DC2; and the results of any monitoring at DC2 undertaken during time limited operations;
  - interpretation of the water balance (condition 23), including seepage rates, and volumes of any seepage recovered;
  - a summary of the environmental performance of all infrastructure as constructed or installed (as applicable), which includes records detailing the:
    - operations of the infrastructure; and

- (ii) testing of the infrastructure.
- (f) a review of performance and compliance against the conditions of the works approval; and
- (g) where the manufacturer's design specifications and the conditions of this works approval have not been met, what measures will the works approval holder take to meet them, and what timeframes will be required to implement those measures.

### Cumulative seepage assessment

- 28.** The works approval holder must submit a report to the CEO within six months from the date of issue of this works approval. The report must include but not be limited to:
- (a) an updated site-wide groundwater model which integrates TSF 3 seepage fluxes, TSF 2 seepage, pit dewatering and local hydrogeological processes;
  - (b) evaluate how combined seepage loads will influence groundwater mounding, phreatic geometry, salinity evolution, plume migration or the adequacy of the existing TSF 2 recovery system once TSF 3 is operating;
  - (c) assess how cumulative seepage may shift groundwater gradients or accelerate salinity movement toward down gradient receptors; and
  - (d) based on the updated site-wide groundwater model, the works approval holder must evaluate whether the existing groundwater monitoring network provides adequate down-gradient receptor coverage and, where gaps are identified, propose additional near receptor monitoring bores to verify potential off-site seepage pathways.

### Records and reporting (general)

- 29.** The works approval holder must record the following information in relation to complaints received by the works approval holder (whether received directly from a complainant or forwarded to them by the Department or another party) about any alleged emissions from the premises:
- (a) the name and contact details of the complainant, (if provided);
  - (b) the time and date of the complaint;
  - (c) the complete details of the complaint and any other concerns or other issues raised; and
  - (d) the complete details and dates of any action taken by the works approval holder to investigate or respond to any complaint.
- 30.** The works approval holder must maintain accurate and auditable books including the following records, information, reports, and data required by this works approval:
- (a) the works conducted in accordance with conditions 1 and 2;
  - (b) any maintenance of infrastructure that is performed in the course of complying with conditions of this works approval;
  - (c) monitoring and inspection programmes undertaken in accordance with conditions 20 and 24; and
  - (d) complaints received under condition 29.

- 31.** The books specified under condition 30 must:
- (a) be legible;
  - (b) if amended, be amended in such a way that the original version(s) and any subsequent amendments remain legible and are capable of retrieval;
  - (c) be retained by the works approval holder for the duration of the works approval;  
and
  - (d) be available to be produced to an inspector or the CEO as required.

## Definitions

In this works approval, the terms in Table 10 have the meanings defined.

**Table 10: Definitions**

| Term                                       | Definition   |
|--|--|
| ACN  | Australian Company Number.   |
| ANZG 2018                                  | means the most recent version and relevant parts of the Australian and New Zealand Guidelines for Fresh and Marine Water Quality (Australian and New Zealand Governments and Australian state and territory governments, Canberra ACT, Australia) available at <a href="https://www.waterquality.gov.au/anz-guidelines">https://www.waterquality.gov.au/anz-guidelines</a> . |
| Assessment of Site Contamination NEPM      | means the <i>National Environment Protection (Assessment of Site Contamination) Measure 1999</i> , as amended from time to time.   |
| AS/NZS 5667.1                              | means the Australian/New Zealand Standard 5667.1:1998 <i>Water quality – Sampling – Guidance on the design of sampling programs, sampling techniques and the preservation and handling of samples</i> .  |
| AS/NZS 5667.11                             | means the Australian/New Zealand Standard 5667.11:1998 <i>Water Quality – Sampling – Guidance on Sampling of Groundwaters</i> .  |
| ASTM D5092/D5092M-16                       | means the ASTM international standard for <i>Standard practice for design and installation of groundwater monitoring wells</i> (Designation: ASTM D5092/D5092M-16), as amended from time to time.  |
| books                                      | has the same meaning given to that term under the EP Act.  |
| CEO  | means Chief Executive Officer.<br>CEO for the purposes of notification means:<br>Director General<br>Department administering the <i>Environmental Protection Act 1986</i><br>Locked Bag 10<br>Joondalup DC WA 6919<br><a href="mailto:info@dwer.wa.gov.au">info@dwer.wa.gov.au</a>  |
| critical containment infrastructure        | means the items of infrastructure listed in condition 2.   |
| Critical Containment Infrastructure Report | means a report to satisfy the CEO that works of critical containment infrastructure have been constructed in accordance with the works approval.   |
| Department                                 | means the department established under section 35 of the <i>Public Sector Management Act 1994</i> and designated as responsible for the administration of Part V Division 3 of the EP Act.   |
| discharge                                  | has the same meaning given to that term under the EP Act.  |
| emission                                   | has the same meaning given to that term under the EP Act.  |
| environmental commissioning                | means the sequence of activities to be undertaken to test equipment integrity and operation, or to determine the environmental performance, of equipment and infrastructure to establish or test a steady state operation  |

| Term                                     | Definition  |
|--|---|
|  | and confirm design specifications.  |
| Environmental Commissioning Report       | means a report on any commissioning activities that have taken place and a demonstration that they have concluded, with focus on emissions and discharges, waste containment, and other environmental factors.  |
| Environmental Compliance Report          | means a report to satisfy the CEO that the conditioned infrastructure and/or equipment has been constructed and/or installed in accordance with the works approval.   |
| EP Act                                   | <i>Environmental Protection Act 1986 (WA).</i>  |
| EP Regulations                           | <i>Environmental Protection Regulations 1987 (WA).</i>  |
| HDPE                                     | high density polyethylene.  |
| LEAF                                     | means Leaching Environmental Assessment Framework.  |
| mbgl                                     | metres below ground level.  |
| Method 1313                              | means Method 1313: Liquid-Solid Partitioning as a Function of Extract pH using a Parallel Batch Extraction Procedure.   |
| Method 1314                              | means Method 1314: Liquid-Solid Partitioning as a Function of Liquid-Solid Ratio for Constituents in Solid Materials using an Up-Flow Percolation Column Procedure.   |
| m/s                                      | metres per second.  |
| µS/cm                                    | micro Siemens per centimetre.   |
| NATA                                     | means the National Association of Testing Authorities, Australia.   |
| NATA accredited                          | means in relation to the analysis of a sample that the laboratory is NATA accredited for the specified analysis at the time of the analysis.  |
| premises                                 | the premises to which this works approval applies, as specified at the front of this works approval and as shown on the premises map (Figure 1) in Schedule 1 to this works approval.   |
| prescribed premises                      | has the same meaning given to that term under the EP Act.   |
| m  | metres.   |
| RL                                       | means Relative Level.   |
| spot sample                              | means a discrete sample representative at the time and place at which the sample is taken.  |
| suitably qualified geotechnical engineer | means a person who: <ul style="list-style-type: none"> <li>(a) holds a Bachelor of Engineering recognised by the Institute of Engineers; and</li> <li>(b) has a minimum of five years of experience working in the area of geotechnical engineering</li> </ul> or is otherwise approved by the CEO to act in this capacity. |

| Term                              | Definition  |
|-----------------------------------|---|
| suitably qualified hydrogeologist | means a person who holds a tertiary qualification specialising in environmental science, geology or equivalent and has a minimum of five years of experience working in area of hydrogeology, including investigation and assessment of groundwater resources, or who is otherwise approved by the CEO to act in this capacity. |
| time limited operations           | refers to the operation of the infrastructure and equipment identified under this works approval that is authorised for that purpose, subject to the relevant conditions.   |
| TSF 3                             | means Tailings Storage Facility 3.  |
| waste                             | has the same meaning given to that term under the EP Act.   |
| works approval                    | refers to this document, which evidences the grant of the works approval by the CEO under section 54 of the EP Act, subject to the conditions.  |
| works approval holder             | refers to the occupier of the premises being the person to whom this works approval has been granted, as specified at the front of this works approval.   |

---

**END OF CONDITIONS**

# Schedule 1: Maps

## Premises map

The boundary of the prescribed premises is shown in black outline in the map below (Figure 1).

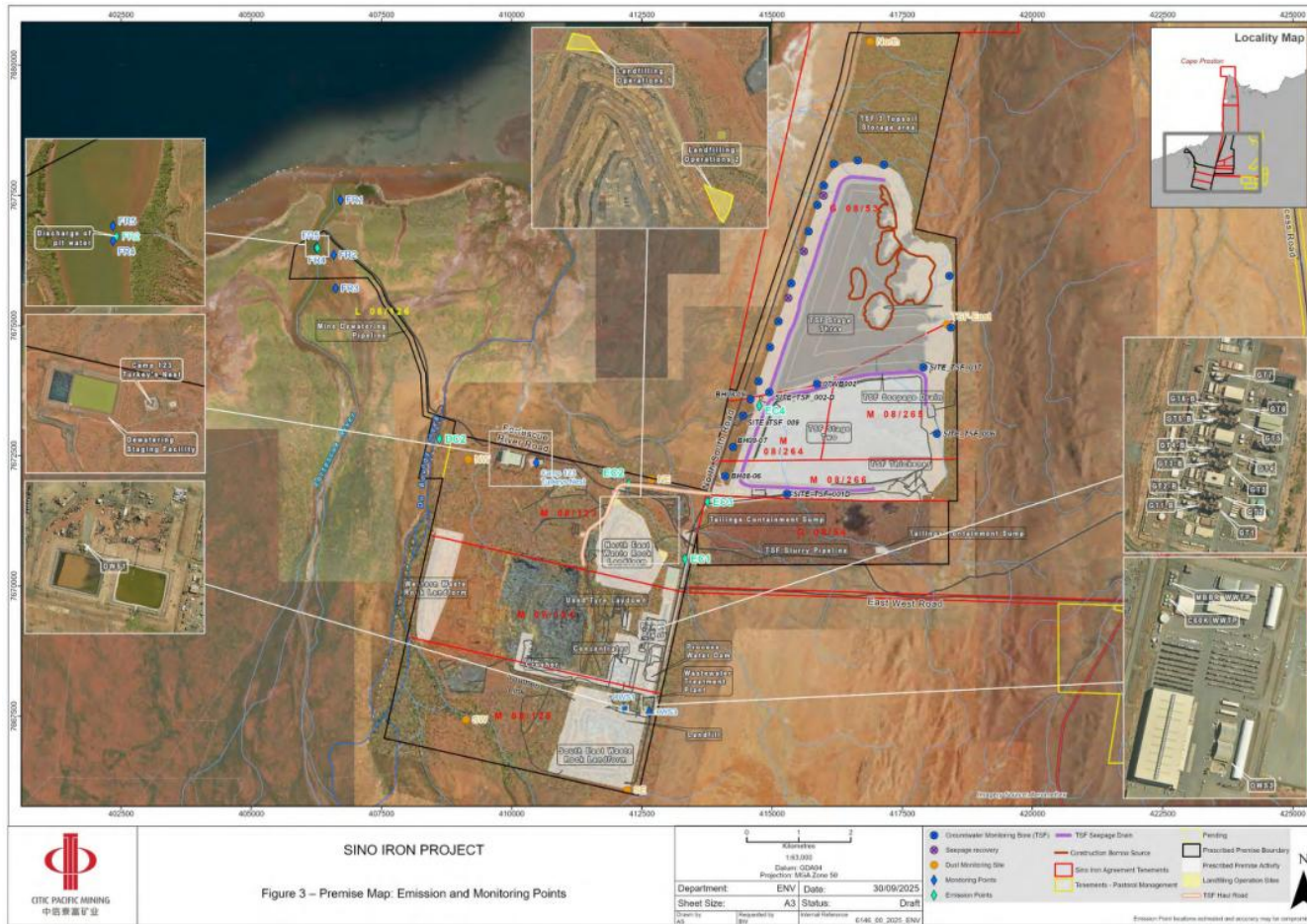


Figure 1: Map of the boundary of the prescribed premises

W3102/2025/1 (Issue date: 15/05/2026)

### Infrastructure maps

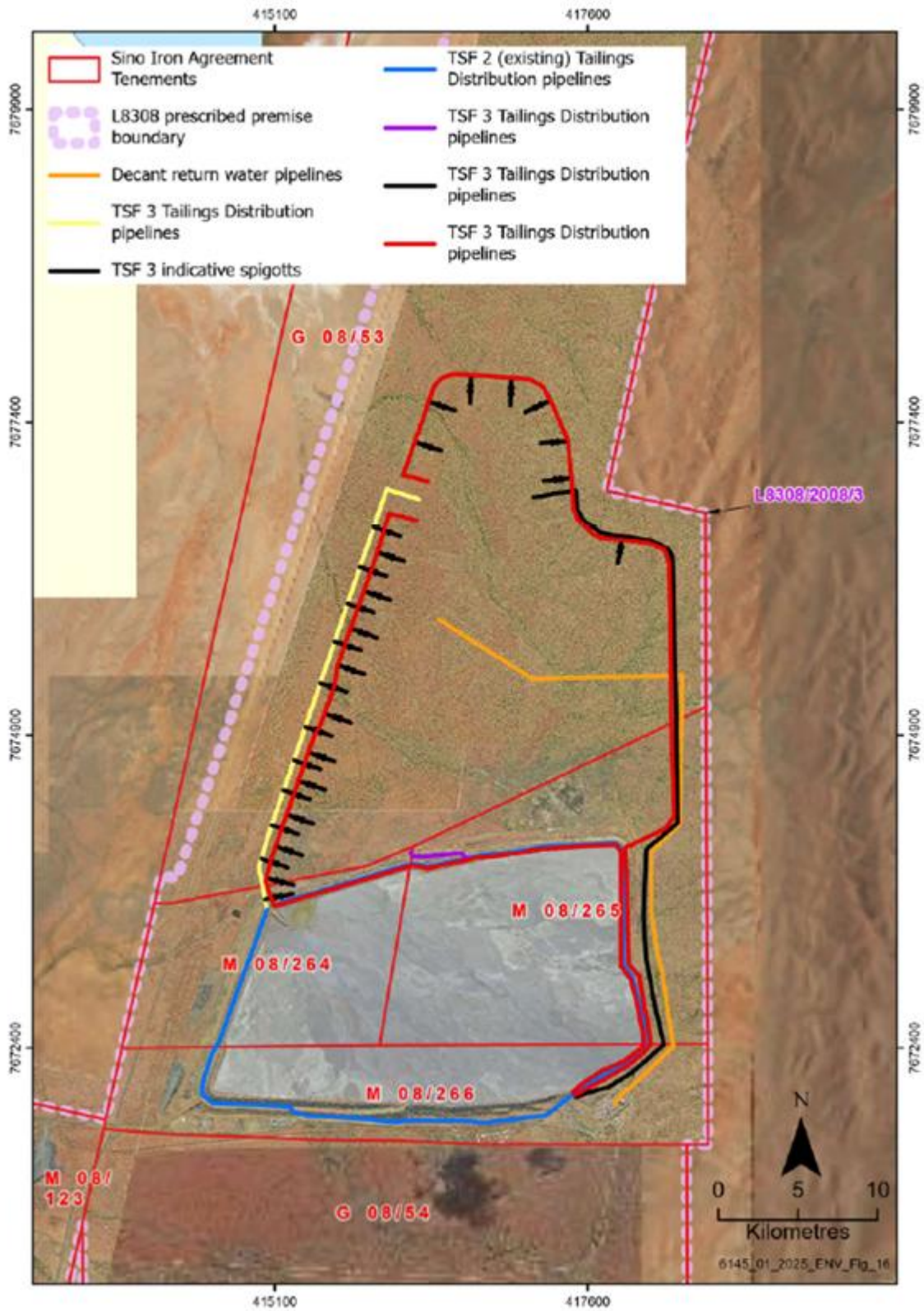


Figure 2: TSF 3 tailings distribution and decant return water pipelines

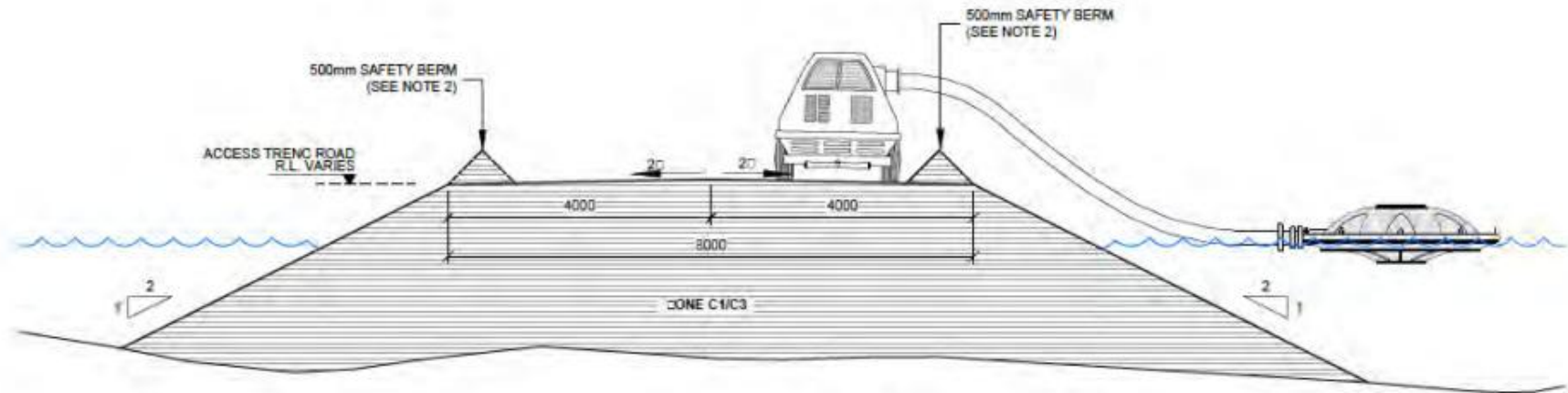


Figure 3: TSF 3 water intake devices (relevant for Stages 1A and 1B)

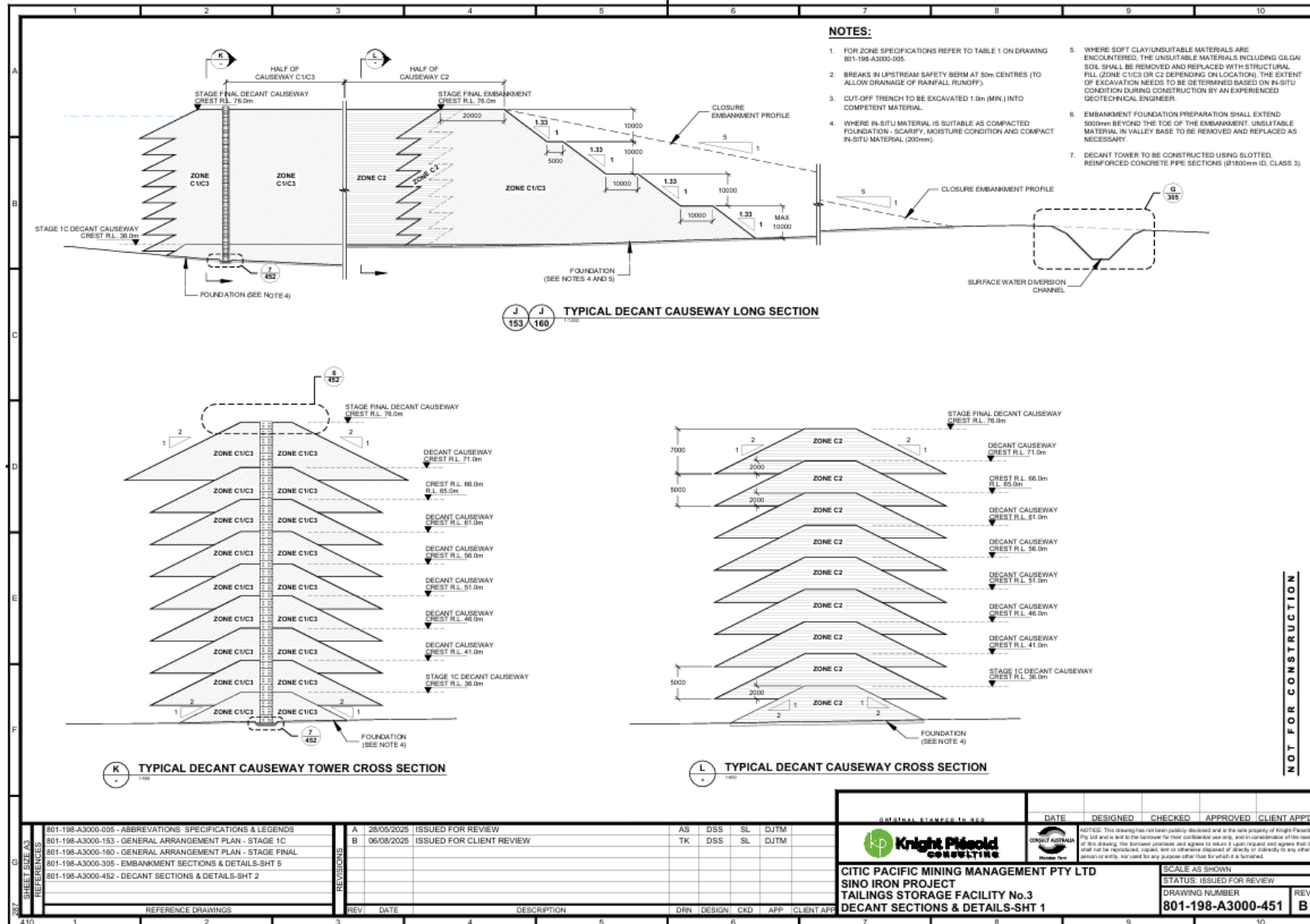


Figure 4: TSF 3 Decant causeway (relevant for Stage 1C)

W3102/2025/1 (Issue date: 15/05/2026)

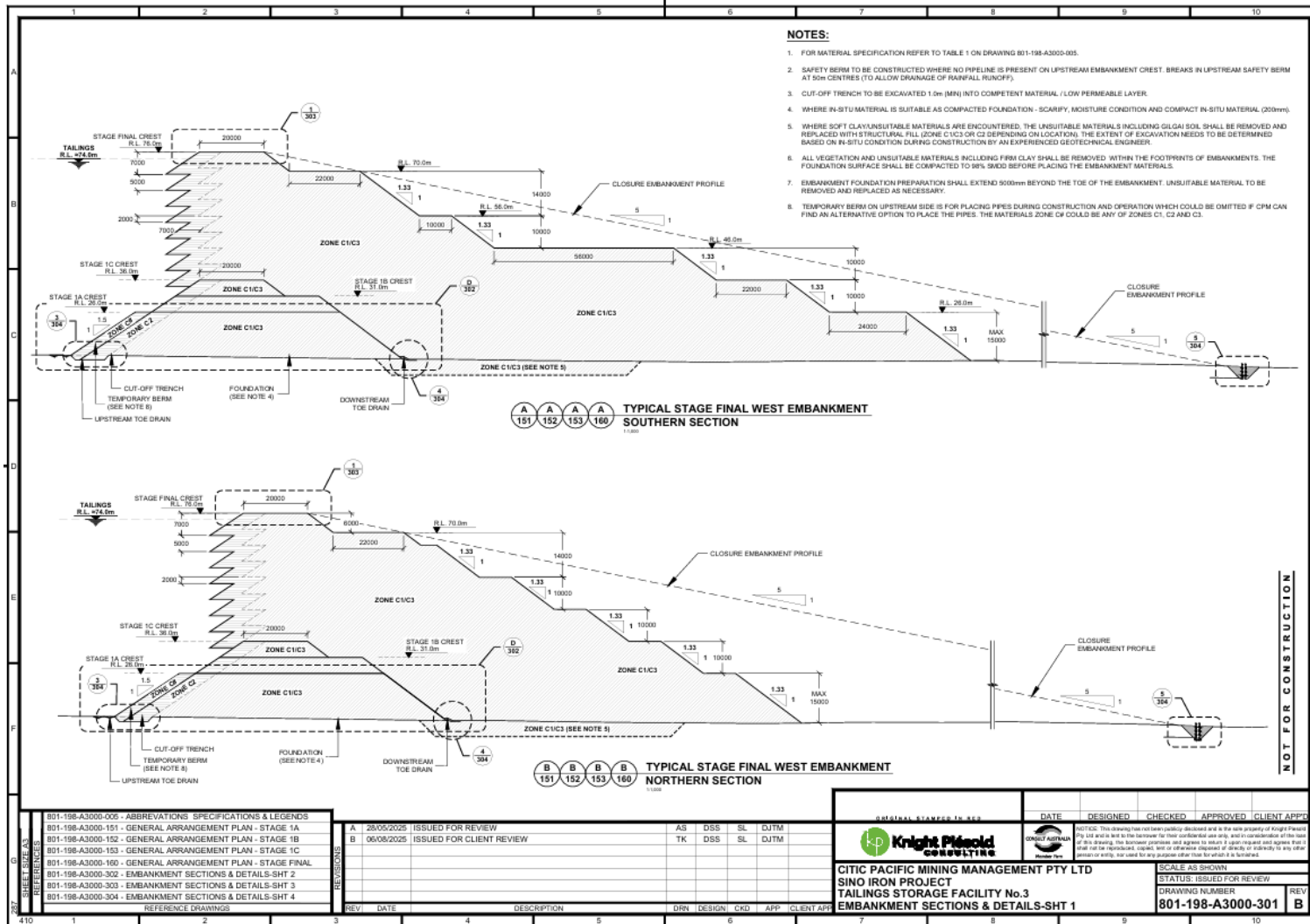


Figure 5: TSF 3 embankment sections (relevant only for Stages 1A, 1B and 1C)

W3102/2025/1 (Issue date: 15/05/2026)

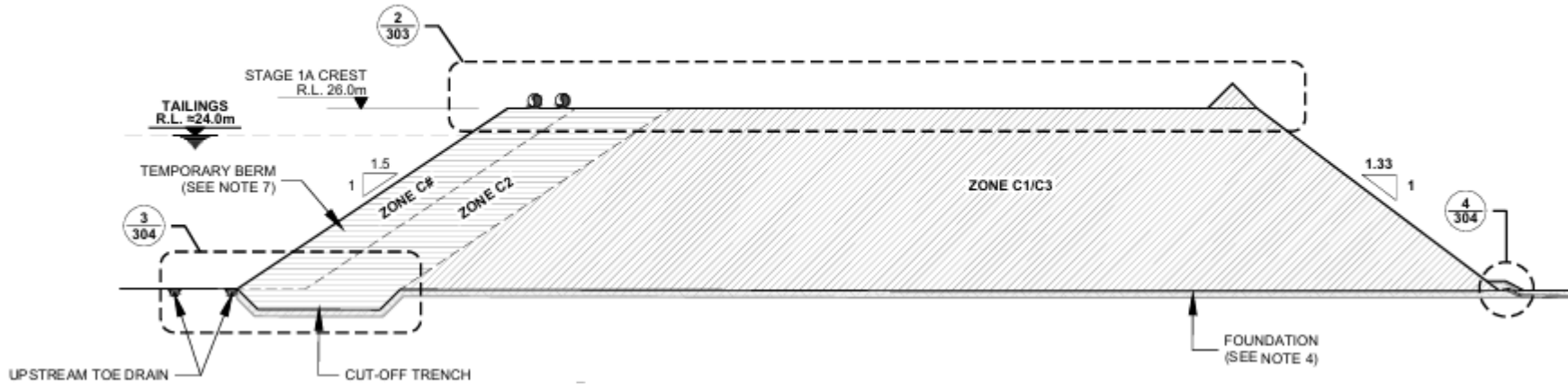


Figure 6: TSF 3 Stage 1A west embankment section

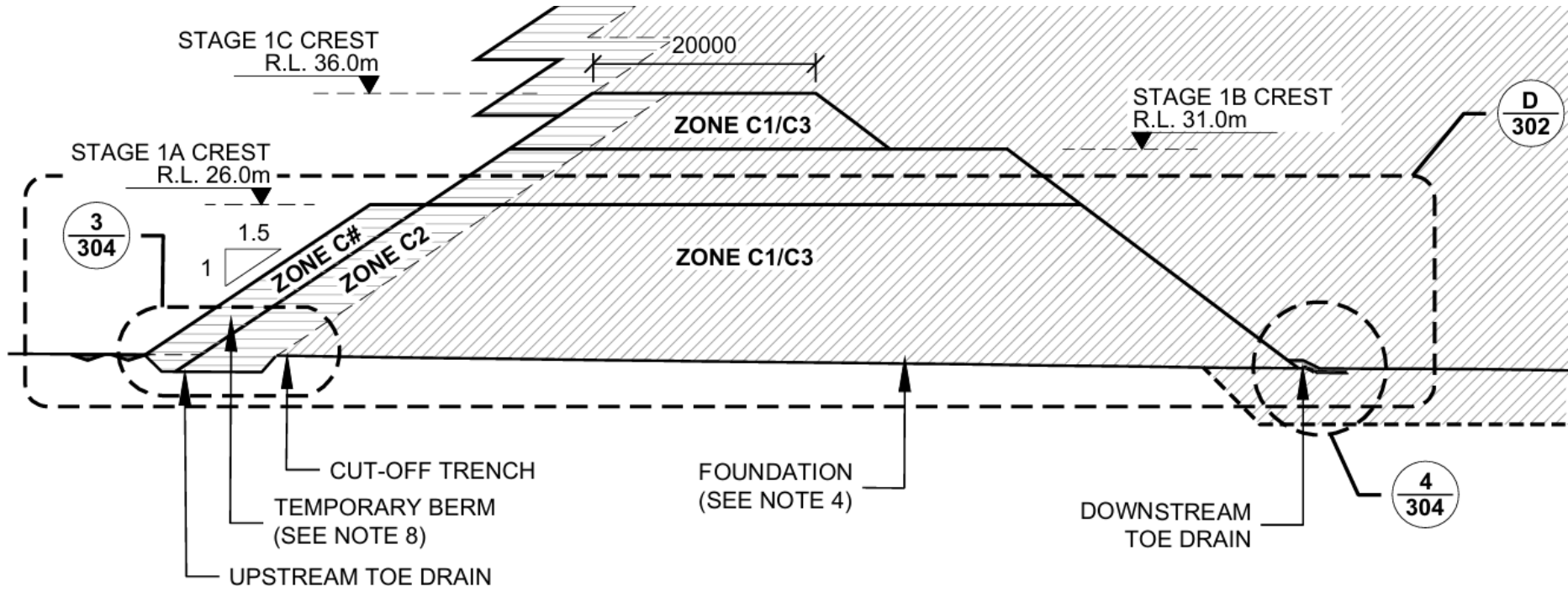


Figure 7: TSF 3 Stages 1A, 1B and 1C west embankments (zoomed area from Figure 5)

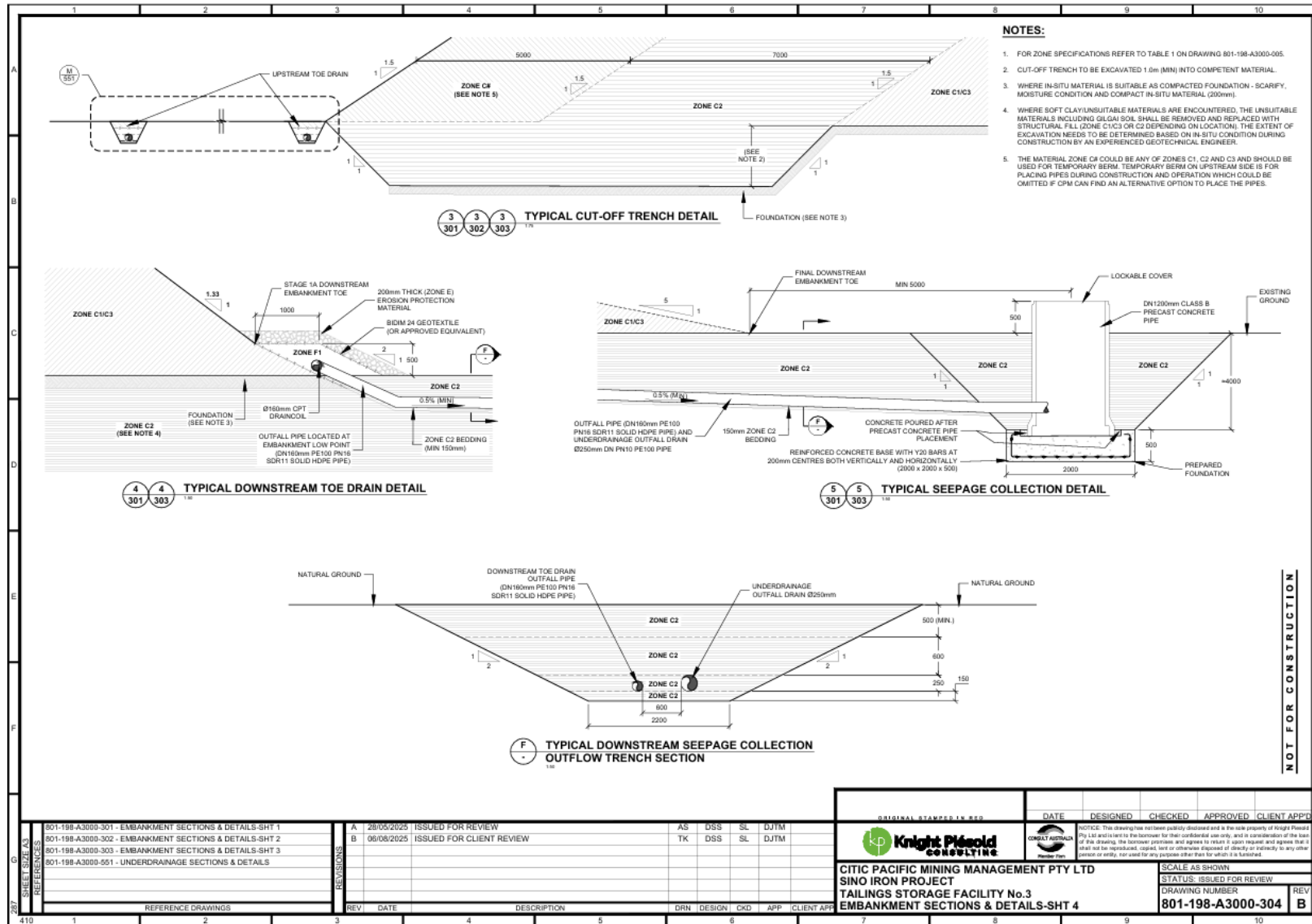


Figure 8: TSF 3 cut-off trench, downstream toe drain and seepage collection detail

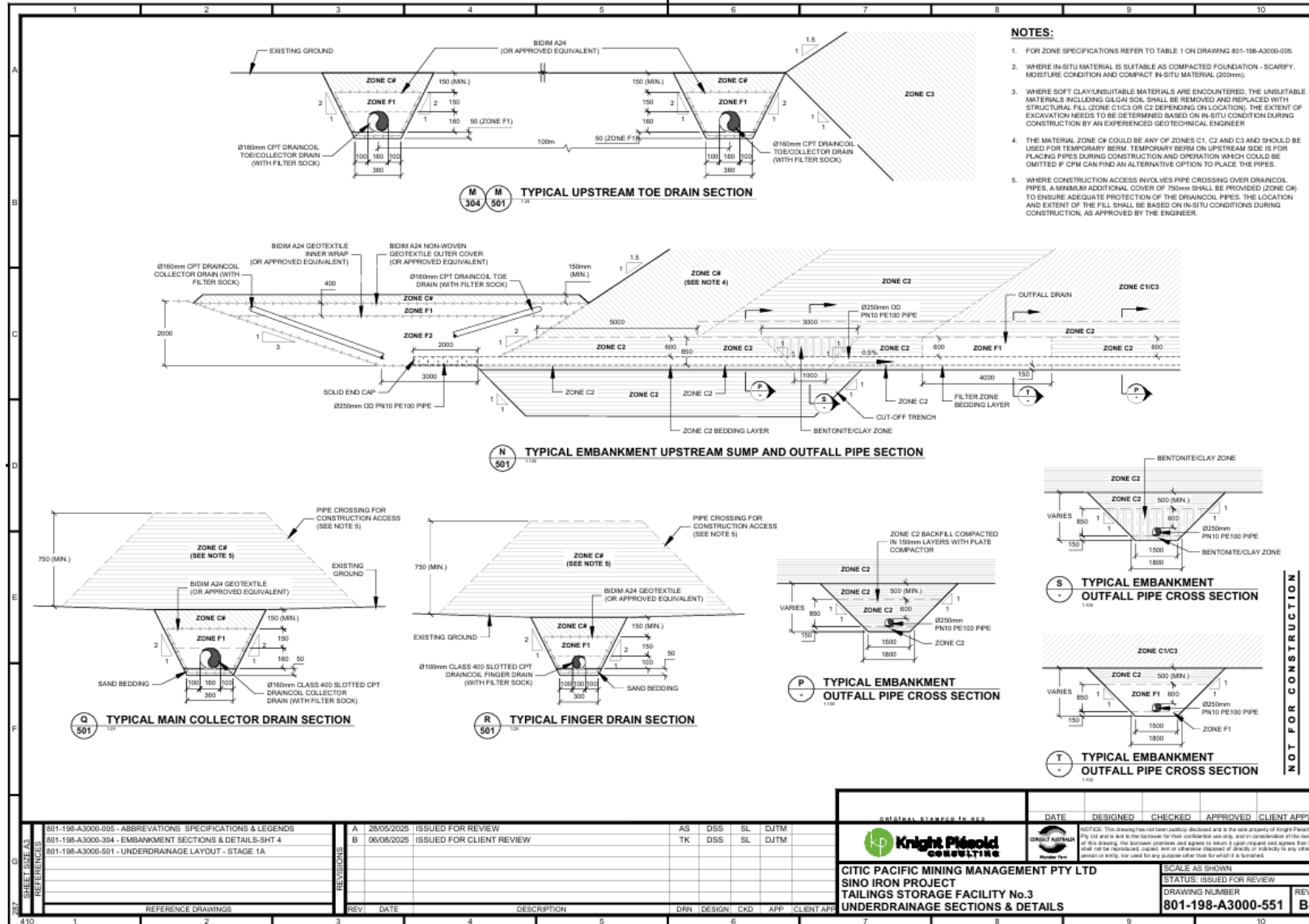


Figure 9: TSF 3 underdrainage

W3102/2025/1 (Issue date: 15/05/2026)

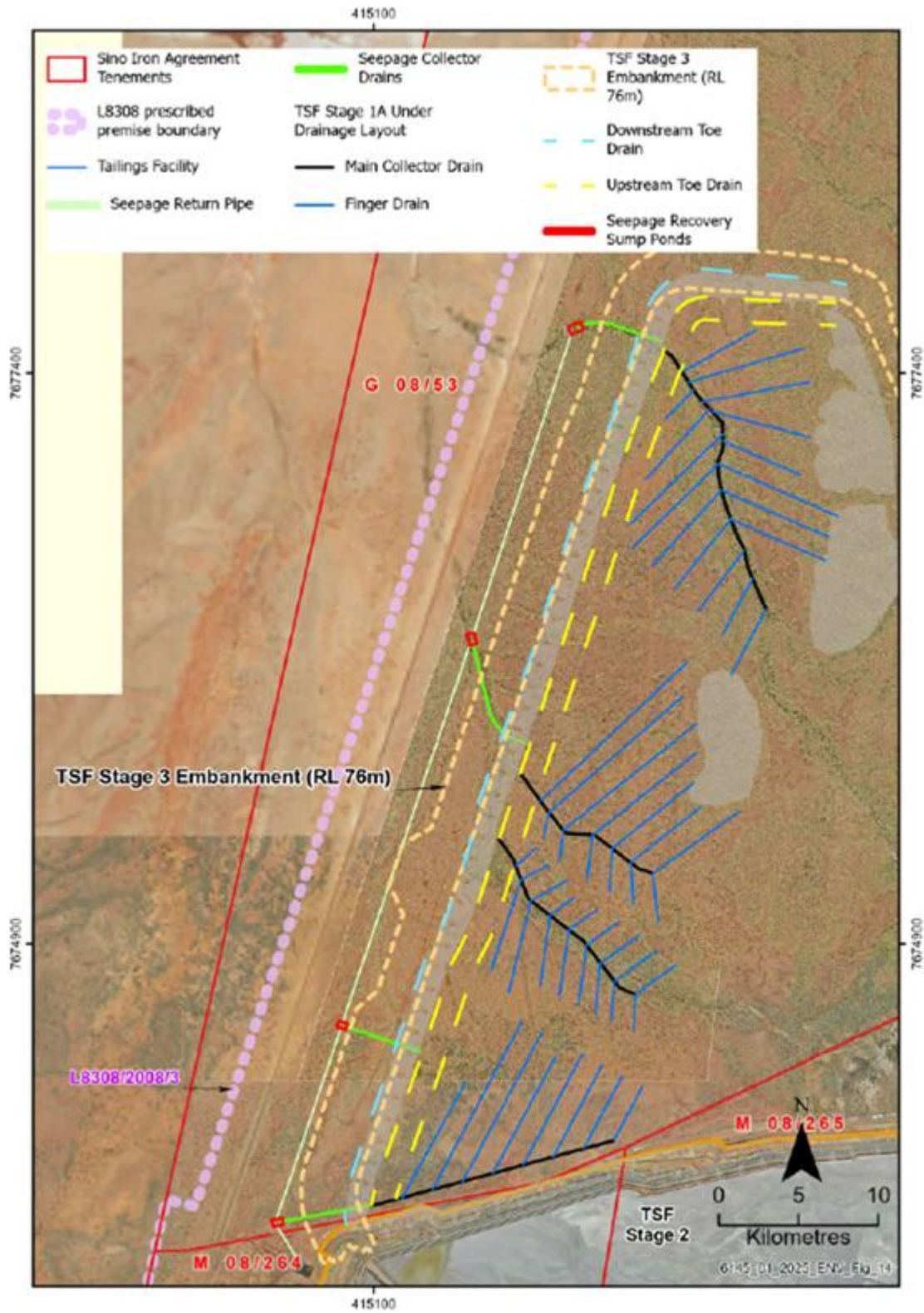


Figure 10: TSF 3 underdrainage system

### Groundwater monitoring and seepage recovery bores

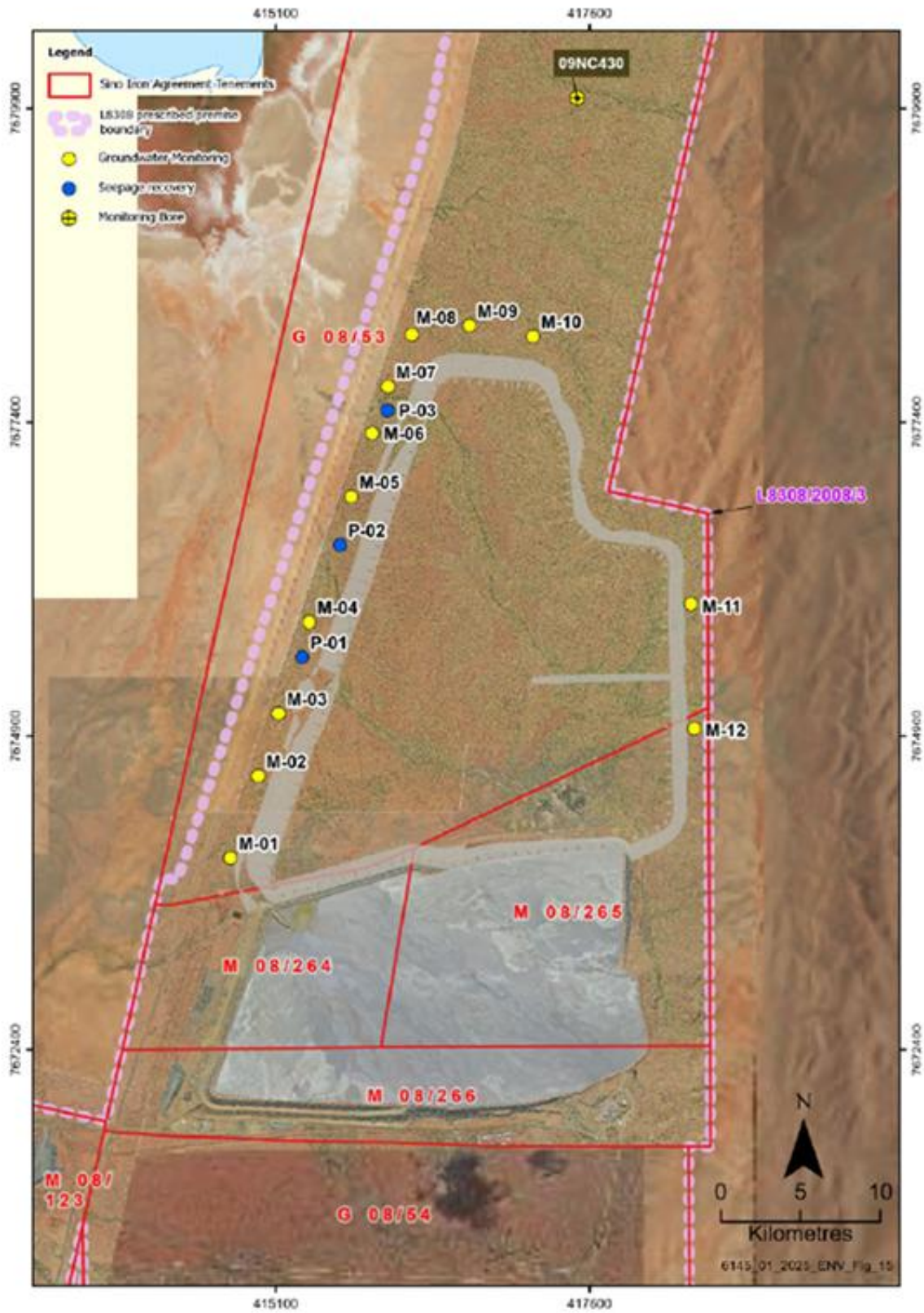


Figure 11: TSF 3 indicative groundwater monitoring and seepage recovery bore locations