



Works approval number	W3179/2026/1
Works approval holder	Pilbara Iron Pty Ltd
ACN	107 216 535
Registered business address	Central Park – Level 18 152-158 St Georges Terrace PERTH, WA, 6000
DWER file number	INS-0003179
Duration	17/03/2026 to 31/12/2027
Date of issue	17/03/2026
Premises details	Bellbird Strategic Laydown Legal description - Land Administration Act Lease I134828 Miscellaneous Licence L47/128 As defined by the coordinates in Schedule 2

Prescribed premises category description (Schedule 1, <i>Environmental Protection Regulations 1987</i>)	Assessed production / design capacity
Category 12: Screening etc. of material: premises (other than premises within category 5 or 8) on which material extracted from the ground is screened, washed, crushed, ground, milled, sized or separated.	850,000 tonnes per annual period
Category 13: Crushing of building material: premises on which waste building or demolition material (for example, bricks, stones or concrete) is crushed or cleaned.	850,000 tonnes per annual period
Category 61A: Solid waste facility: premises (other than premises within category 67A) on which solid waste produced on other premises is stored, reprocessed, treated, or discharged onto land.	890,000 tonnes at any one time

This works approval is granted to the works approval holder, subject to the attached conditions, on 17 March 2026, by:

MANAGER, HEAVY INDUSTRIES

an officer delegated under section 20 of the Environmental Protection Act 1986 (WA)

Works approval history

Date	Reference number	Summary of changes
17/03/2026	W3179/2026/1	Works approval granted.

Interpretation

In this works approval:

- (a) the words 'including', 'includes' and 'include' in conditions mean "including but not limited to", and similar, as appropriate;
- (b) where any word or phrase is given a defined meaning, any other part of speech or other grammatical form of that word or phrase has a corresponding meaning;
- (c) where tables are used in a condition, each row in a table constitutes a separate condition;
- (d) any reference to an Australian or other standard, guideline, or code of practice in this works approval:
 - (i) if dated, refers to that particular version; and
 - (ii) if not dated, refers to the latest version and therefore may be subject to change over time;
- (e) unless specified otherwise, any reference to a section of an Act refers to that section of the EP Act; and
- (f) unless specified otherwise, all definitions are in accordance with the EP Act.

NOTE: This works approval requires specific conditions to be met but does not provide any implied authorisation for other emissions, discharges, or activities not specified in this works approval.

Works approval conditions

The works approval holder must ensure that the following conditions are complied with:

Construction phase

Infrastructure and equipment

1. The works approval holder must:
 - (a) construct and/or install the infrastructure and/or equipment;
 - (b) in accordance with the corresponding design and construction / installation requirements; and
 - (c) at the corresponding infrastructure location as set out in Table 1.

Table 1: Design and construction / installation requirements

Item	Infrastructure	Design and construction / installation requirements	Infrastructure location
1.	Mobile crushing and screening plant (Category 12 and 13)	a) Mobile plant consisting of the following components: <ol style="list-style-type: none"> (i) Cone crusher (ii) Heavy duty first screen (iii) Final screen. b) Incorporate angle-adjustable stockpiling conveyors to minimise drop heights; c) Fitted with water sprays and dust covers for dust suppression; and d) Stockpiles to be located at least 500 m from a creek line or waterway.	Within premises boundary
2.	Material stockpile areas (Category 61A)	a) Maintain separate stockpile areas for the following materials: <ol style="list-style-type: none"> (i) Ballast/Crushed Rock stockpiles; (ii) Segregation stockpile awaiting sampling and analytical results (including asbestos); and b) Stockpiles to be located at least 500 m from a creek line or waterway.	As shown in Schedule 1, Figure 1
3.	Stormwater infrastructure (Earthen bund)	Earthen bund at approximately 0.4 m in height is to be constructed surrounding the premises to divert stormwater around the work area.	Perimeter of work area
4.	Earthen Sumps	Adequately sized collection sumps must be constructed for any potentially contaminated stormwater runoff collection and evaporation.	As shown in Schedule 1, Figure 1

Compliance reporting

2. The works approval holder must within 30 calendar days of an item of infrastructure or equipment required by condition 1 being constructed and/or installed:

- (a) undertake an audit of their compliance with the requirements of condition 1; and
 - (b) prepare and submit to the CEO an Environmental Compliance Report on that compliance.
3. The Environmental Compliance Report required by condition 2, must include as a minimum the following:
- (a) certification that the items of infrastructure or component(s) thereof, as specified in condition 1, have been constructed in accordance with the relevant requirements specified in condition 1;
 - (b) as constructed plans and a detailed site plan for each item of infrastructure or component of infrastructure specified in condition 1; and
 - (c) be signed by a person authorised to represent the works approval holder and contains the printed name and position of that person.

Time limited operations phase

Commencement and duration

- 4. The works approval holder may only commence time limited operations for the items of infrastructure identified in condition 1 where the Environmental Compliance Report as required by condition 2 has been submitted by the works approval holder.
- 5. The works approval holder may conduct time limited operations for the items of infrastructure specified in condition 6:
 - (a) for a period not exceeding 180 calendar days from the day the works approval holder meets the requirements of condition 4; or
 - (b) until such time as a licence for the specified infrastructure is granted in accordance with Part V of the *Environmental Protection Act 1986*, if one is granted before the end of the period specified in condition 5(a).

Time limited operations requirements

- 6. During time limited operations, the works approval holder must ensure that the premises infrastructure and equipment listed in and located at the corresponding infrastructure location is maintained and operated in accordance with the corresponding operational requirement set out in Table 2.

Table 2: Infrastructure and equipment requirements during time limited operations

	Infrastructure	Operational requirements	Infrastructure location
1.	Mobile crushing and screening plant (Category 12 and 13)	<ul style="list-style-type: none"> a) Angle-adjustable stockpiling conveyors to be maintained and operated to minimise drop heights; b) Water sprays and dust covers to be operated for dust suppression; and c) Stockpiles to be located at least 500 m from a creek line or waterway. 	As shown in Schedule 1, Figure 1

2.	Material stockpile areas (Category 61A)	Stockpile management: a) Stockpiles must be constructed and maintained in a safe and stable manner, with slope angles consistent with the natural angle of repose of the material; b) Maximum height to be maintained of 14 m above ground level; and c) Stockpiles to be located at least 500 m from a creek line or waterway.	
3.	Mobile plant refuelling trucks and associated equipment	a) Spill kit and drip trays/pads must be used during refuelling; and b) Fuel spills to be cleaned up and contaminated soil disposed offsite at a licensed facility.	
4.	Earthen bunds	Earthen bunding to be maintained at approximately 0.4 m in height surrounding the works areas to divert stormwater.	Perimeter of premises
5.	Earthen sumps	Earthen sumps to be maintained to contain stormwater and process/wash water generated at the premises.	As shown in Schedule 1, Figure 1

7. The works approval must only accept onto the premises materials for recycling, processing and/storage that meet the specifications set out in Table 3.

Table 3: Material acceptance specifications

Material Type	Rate at which material is received	Acceptance specifications
Railway ballast and rail civil material	Up to 850,000 tonnes at any one time	Recovered railway ballast material and rail civil material from the Integrated Rail Network (IRN). Concrete sleepers from the IRN. Must not contain any visible asbestos or ACM.
Concrete sleepers	Up to 40,000 tonnes at any one time	

8. The works approval holder must ensure that the asbestos content of any material crushed or screened does not exceed the contamination limit of 0.001% w/w for asbestos (in any form).

Material inputs and output monitoring

9. The works approval holder must undertake the monitoring in Table 4 according to the specifications in Table 4 during time limited operations.

Table 4: Monitoring of inputs and outputs

Material Type	Units	Frequency
Railway ballast and rail civil material inputs (accepted onto site for storage and/or processing)	Tonnes	Ongoing
Concrete sleepers accepted onto site		
Crushed/screened material product (deemed suitable for reuse)		
Material rejects (materials disposed of offsite to a suitably licensed facility)		

Compliance reporting

10. The works approval holder must submit to the CEO a report on the time limited operations within 30 calendar days of the completion date of time limited operations or 30 calendar days before the expiration date of the works approval, whichever is the sooner.
11. The works approval holder must ensure the report required by condition 10 includes the following:
 - (a) a summary of the time limited operations, including timeframes and amount of material processed;
 - (b) a summary of the environmental performance of all infrastructure as constructed or installed (as applicable);
 - (c) a review of performance and compliance against the conditions of the works approval;
 - (d) where the manufacturer's design specifications and the conditions of this works approval have not been met, what measures will the works approval holder take to meet them, and what timeframes will be required to implement those measures;
 - (e) asbestos sampling and testing, as per condition 8; and
 - (f) material inputs and outputs tonnages, as per condition 9.

Records and reporting.

12. The works approval holder must maintain accurate and auditable records of all asbestos testing undertaken in accordance with condition 8, including:
 - (a) details of the sample size;
 - (b) a statement of limit of detection of the analysis;
 - (c) results in relation to asbestos detected (exceedance of contamination limit of 0.001% w/w for asbestos), or not detected;
 - (d) a description of any asbestos detected and an estimate of the concentration of asbestos detected; and
 - (e) for material deemed to exceed the contamination limit of 0.001% w/w for asbestos, a description of the tonnage and disposal facility.
13. The works approval holder must record the following information in relation to complaints received by the works approval holder (whether received directly from a complainant or forwarded to them by the Department or another party) about any

alleged emissions from the premises:

- (a) the name and contact details of the complainant, (if provided);
- (b) the time and date of the complaint;
- (c) the complete details of the complaint and any other concerns or other issues raised; and
- (d) the complete details and dates of any action taken by the works approval holder to investigate or respond to any complaint.

14. The works approval holder must maintain accurate and auditable books including the following records, information, reports, and data required by this works approval:

- (a) the works conducted in accordance with condition 1;
- (b) any maintenance of infrastructure that is performed in the course of complying with condition 6;
- (c) monitoring programmes undertaken in accordance with condition 9; and
- (d) complaints received under condition 13.

15. The books specified under condition 14 must:

- (a) be legible;
- (b) if amended, be amended in such a way that the original version(s) and any subsequent amendments remain legible and are capable of retrieval;
- (c) be retained by the works approval holder for the duration of the works approval; and
- (d) be available to be produced to an inspector or the CEO as required.

Definitions

In this works approval, the terms in Table 5 have the meanings defined.

Table 5: Definitions

Term	Definition
ACM	Asbestos Containing Material
annual period	a 12 month period commencing from 1 January until 31 December in the same year.
asbestos	means the asbestiform variety of mineral silicates belonging to the serpentine or amphibole groups of rock-forming minerals and includes actinolite, amosite, anthophyllite, chrysotile, crocidolite, tremolite and any mixture containing 2 or more of those.
books	has the same meaning given to that term under the EP Act.
CEO	means Chief Executive Officer. CEO for the purposes of notification means: Director General Department administering the <i>Environmental Protection Act 1986</i> Locked Bag 10 Joondalup DC WA 6919 info@dwer.wa.gov.au
Department	means the department established under section 35 of the <i>Public Sector Management Act 1994</i> and designated as responsible for the administration of Part V Division 3 of the EP Act.
discharge	has the same meaning given to that term under the EP Act.
emission	has the same meaning given to that term under the EP Act.
Environmental Compliance Report	means a report to satisfy the CEO that the conditioned infrastructure and/or equipment has been constructed and/or installed in accordance with the works approval.
EP Act	<i>Environmental Protection Act 1986 (WA)</i> .
EP Regulations	<i>Environmental Protection Regulations 1987 (WA)</i> .
premises	the premises to which this works approval applies, as specified at the front of this works approval and as shown on the premises map Figure 1 in Schedule 1 to this works approval.
prescribed premises	has the same meaning given to that term under the EP Act.
time limited operations	refers to the operation of the infrastructure and equipment identified under this works approval that is authorised for that purpose, subject to the relevant conditions.

Term	Definition
waste	has the same meaning given to that term under the EP Act.
works approval	refers to this document, which evidences the grant of the works approval by the CEO under section 54 of the EP Act, subject to the conditions.
works approval holder	refers to the occupier of the premises being the person to whom this works approval has been granted, as specified at the front of this works approval.

END OF CONDITIONS

Schedule 1: Maps

Premises map

The boundary of the prescribed premises is shown in the map below (Figure 1).

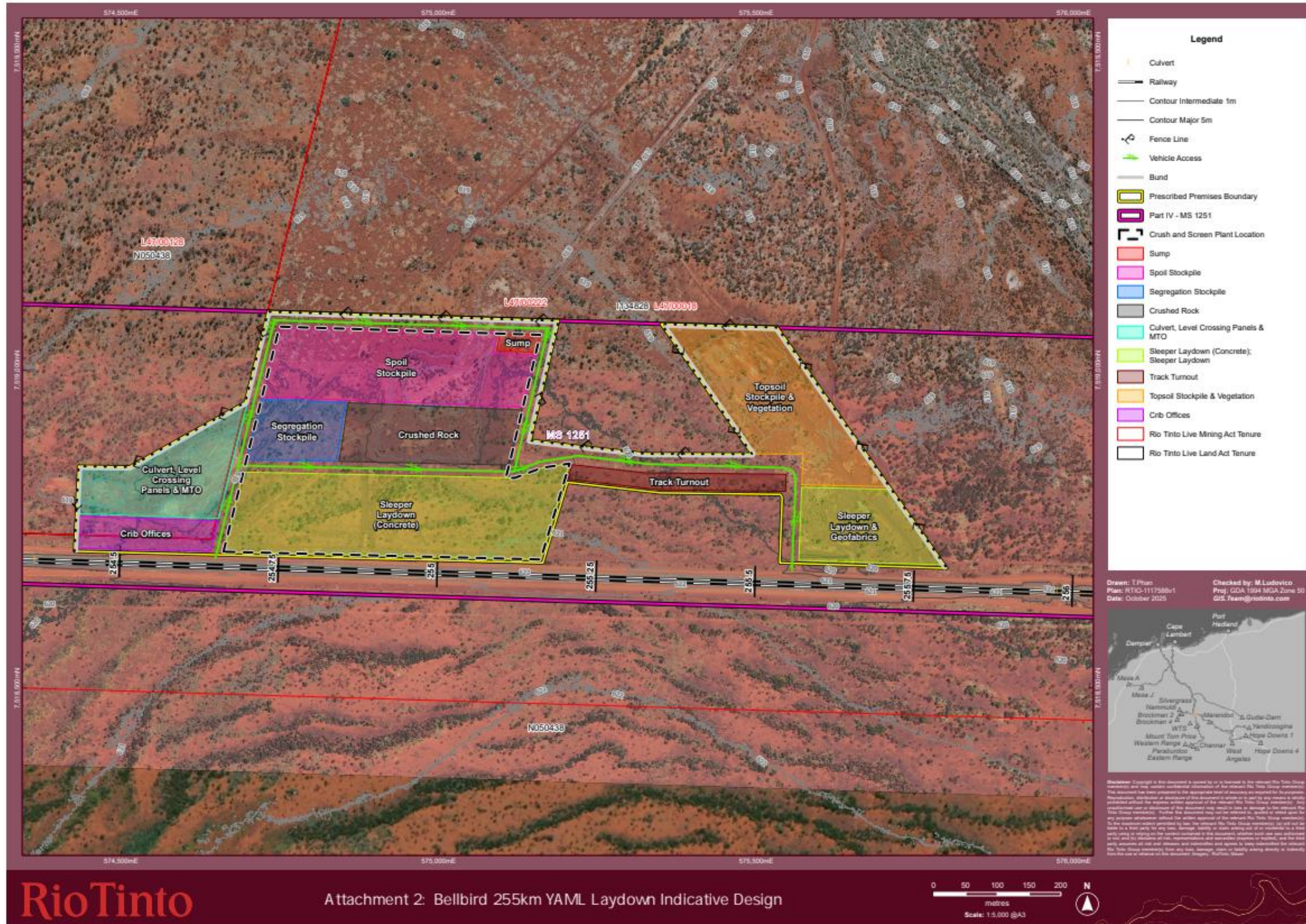


Figure 1: Map of the boundary of the prescribed premises

Schedule 2: Premises boundary

The corners of the premises boundary are the coordinates listed in Table 6.

Table 6: Premises boundary coordinates (GDA 1994 MGA Zone 50)

	Easting	Northing
1.	575325.965	7518868.262
2.	575493.504	7518867.781
3.	575350.628	7519072.411
4.	575532.878	7519066.754
5.	575794.45	7518696.534
6.	575537.566	7518706.568
7.	575541.025	7518799.719
8.	575537.836	7518804.287
9.	575348.536	7518806.699
10.	575202.582	7518823.549
11.	575164.282	7518697.024
12.	574426.609	7518715.133
13.	574433.116	7518848.78
14.	574513.216	7518847.398
15.	574695.655	7518949.307
16.	574731.525	7519091.626
17.	575188.753	7519077.435
18.	575144.143	7518889.276
19.	575219.74	7518880.232