



Works Approval

Works approval number	W3081/2025/1
Works approval holder	Northern Star Resources Limited
ACN	092 832 892
Registered business address	Level 4 500 Hay Street SUBIACO WA 6008
DWER file number	INS-0003081
Duration	13/02/2026 to 12/02/2031
Date of issue	13/02/2026
Premises details	Hercules Gold Mine Shire of Coolgardie Legal description - Mining tenements M15/469, M15/663, M15/726, M15/740, M15/937, M15/938 and Lot 105 on Deposited Plan 40396.

Prescribed premises category description (Schedule 1, <i>Environmental Protection Regulations 1987</i>)	Assessed production/ design capacity
Category 6: Mine dewatering: premises on which water is extracted and discharged into the environment to allow mining of ore.	2,000,000 tonnes per annual period
Category 89: Putrescible landfill site: premises (other than clean fill premises) on which waste of a type permitted for disposal for this category of prescribed premises, in accordance with the <i>Landfill Waste Classification and Waste Definitions 1996</i> , is accepted for burial.	5,000 tonnes per annual period

This works approval is granted to the works approval holder, subject to the attached conditions, on 13 February 2026, by:

Manager, Resource Industries
an officer delegated under section 20 of the *Environmental Protection Act 1986* (WA)

Interpretation

In this works approval:

- (a) the words 'including', 'includes' and 'include' in conditions mean "including but not limited to", and similar, as appropriate;
- (b) where any word or phrase is given a defined meaning, any other part of speech or other grammatical form of that word or phrase has a corresponding meaning;
- (c) where tables are used in a condition, each row in a table constitutes a separate condition;
- (d) any reference to an Australian or other standard, guideline, or code of practice in this works approval:
 - (i) if dated, refers to that particular version; and
 - (ii) if not dated, refers to the latest version and therefore may be subject to change over time;
- (e) unless specified otherwise, any reference to a section of an Act refers to that section of the EP Act; and
- (f) unless specified otherwise, all definitions are in accordance with the EP Act.

NOTE: This works approval requires specific conditions to be met but does not provide any implied authorisation for other emissions, discharges, or activities not specified in this works approval.

Works approval conditions

The works approval holder must ensure that the following conditions are complied with:

Construction phase

Infrastructure and equipment

1. The works approval holder must:
 - (a) construct and/or install the infrastructure and/or equipment;
 - (b) in accordance with the corresponding design and construction / installation requirements; and
 - (c) at the corresponding infrastructure location; and
 - (d) within the corresponding timeframe,
 as set out in Table 1.

Table 1: Design and construction / installation requirements

Infrastructure	Design and construction / installation requirements	Infrastructure location
4 x Turkey's Nest dams	<ul style="list-style-type: none"> • Dams must be constructed with a HDPE liner with minimum thickness of 1 mm; • Constructed dams are to include level sensors and auto-shut off device to inflow; and • Dams must be designed to have a minimum freeboard of 300 mm. 	Schedule 1 maps – Figure 2 and 3
Dewatering pipelines	<ul style="list-style-type: none"> • Pipelines and fittings to meet the following standards: <ul style="list-style-type: none"> ○ AS/NZS 2033:3008: Installation of polyethylene pipe systems; ○ AS/NZS 4129:2008: Fittings for polyethylene (PE) pipes for pressure applications; ○ AS/NZS 4130:2009 Polyethylene (PE) pipes for pressure applications; and ○ AS/NZS 4131:2010: Polyethylene (PE) compounds for pressure pipes and fittings. • Must be constructed with: <ul style="list-style-type: none"> ○ Automatic cut-outs in the event of a pipe failure; or ○ Secondary containment sufficient to contain any spill for a period equal to the time between routine inspections; or ○ Telemetry systems and pressure sensors along pipelines to allow detection of leaks and failures. 	Schedule 1 maps – Figure 2 and 3
Putrescible landfills	<ul style="list-style-type: none"> • Cells to be sized at a maximum dimension of 30 x 10 metres and 5 metres deep; and • Earthen bund of at least 500mm to be placed around each cell to divert uncontaminated stormwater. 	Schedule 1 maps – Figure 4

Infrastructure	Design and construction / installation requirements	Infrastructure location
Workshop	<ul style="list-style-type: none"> • All working areas, refueling areas and storage areas are to be situated on a low permeability hardstand of 1×10^{-9} m/sec or less; • All working areas, refueling areas and storage areas are to be designed to direct uncontaminated stormwater away from the area; • All working areas, refueling areas and storage areas are to flow into a low permeability sump or low point; and • All hydrocarbon/chemical storage vessels to be stored within bunding designed to contain at least 110% of the volume of the largest storage vessel or interconnected system, or at least 25% of the total volume of the substances stored in the compound. 	Schedule 1 maps – Figure 5

Compliance reporting

2. The works approval holder must within 30 calendar days all items of infrastructure or equipment required by condition 1 being constructed and/or installed:
 - (a) undertake an audit of their compliance with the requirements of condition 1; and
 - (b) prepare and submit to the CEO an Environmental Compliance Report on that compliance.
3. The Environmental Compliance Report required by condition 2, must include as a minimum the following:
 - (a) certification by a suitably qualified technician that the infrastructure or component(s) thereof, as specified in condition 1, have been constructed in accordance with the relevant requirements specified in condition 1;
 - (b) evidence (such as photographs) of compliance with the design and construction / installation requirements as detailed in condition 1 and a detailed site plan for each item of infrastructure or component of infrastructure specified in that condition; and
 - (c) be signed by a person authorised to represent the works approval holder and contains the printed name and position of that person.

Time limited operations phase

Commencement and duration

4. The works approval holder may only commence time limited operations for infrastructure identified in condition 1 where the Environmental Compliance Report as required by condition 1 has been submitted by the works approval holder.

5. The works approval holder may conduct time limited operations for the infrastructure specified in condition 1:
- (a) for a period not exceeding 180 calendar days from the day the works approval holder meets the requirements of condition 4; or
 - (b) until such time as a licence for that item of infrastructure is granted in accordance with Part V of the *Environmental Protection Act 1986*, if one is granted before the end of the period specified in condition 5(a).

Time limited operations requirements and emission limits

6. During time limited operations, the works approval holder must ensure that the premises infrastructure, operational areas and equipment listed in Table 2 and located at the corresponding location are maintained and operated in accordance with the corresponding operational requirement set out in Table .

Table 2: Infrastructure, operational areas and equipment requirements during time limited operations

Item	Site infrastructure, operational areas and equipment	Operational requirement	Infrastructure location
1.	Dewatering pipelines	<ul style="list-style-type: none"> a) Ongoing maintenance of pipeline bunds to be undertaken; and b) Relevant section of pipeline to be shut down immediately if a leak or spill is detected, until repairs have been undertaken. 	Schedule 1 maps – Figure 2 and 3
2.	4 x Turkey's nest dams	<ul style="list-style-type: none"> a) Minimum operational freeboard of 300 mm must be maintained at all times. 	Schedule 1 maps – Figure 2 and 3
3.	Putrescible landfills	<p><u>General requirements</u></p> <ul style="list-style-type: none"> a) Uncontaminated stormwater to be diverted away from the active cell; b) Waste in cells to be covered with clean fill weekly or sooner if required; and c) Only authorised waste types outlined in condition 9, Table 4 are to be disposed of into the landfill. <p><u>Tyre disposal</u></p> <ul style="list-style-type: none"> a) Disposal of tyres to be undertaken: <ul style="list-style-type: none"> i. in batches separated from each other by at least 100mm of soil; ii. under a final soil cover of no less than 500 mm of soil; and iii. separate from any flammable material b) Tyres to be buried separate to other waste types; and c) Tyre burial amount and location to be noted and recorded. 	Schedule 1 maps – Figure 4

7. During time limited operations, the works approval holder must ensure that emission(s) specified in Table 3 are discharged at the authorised discharge points and at the corresponding discharge point location(s).

Table 3: Authorised emission sources and discharge points

Emission	Discharge points	Discharge points location
Mine dewater from the Hercules and Penfolds pits.	<ul style="list-style-type: none"> • Greenback pit; • Penfolds pit; • Erebus North pit; • Erebus South pit; and • Fuji pit. 	Schedule 1 maps – Figure 2

8. During time limited operations, the works approval holder must ensure that a minimum freeboard of 3 meters below crest level is maintained within the pits indicated as discharge points in Table 3.
9. The works approval holder must only dispose of waste into the landfill for burial if:
- (a) it is of a type listed on Table ;
 - (b) the quantity to be stored is below the throughput limits as listed in Table ; and
 - (c) it meets the description outlined in Table .

Table 4: Types of waste authorise to be disposed of within the landfill

Waste type ¹	Waste description	Quantity
Putrescible Wastes	Wastes containing organic materials such as food wastes that readily bio-degrade.	5,000 tonnes or less per annual period combined
Inert Waste Type I	Construction and demolition material such as bricks, concrete, rubble, uncontaminated soil and sand, ceramics, glass and clean fill.	
Inert Waste Type II	Used whole tyres and plastics.	

1. Waste types defined in accordance with *Landfill Waste Classification and Waste Definitions 1996 (as amended 2019)*

10. The works approval holder must:
- (a) undertake inspections as detailed in Table ;
 - (b) where any inspection identifies that an appropriate level of environmental protection is not being maintained, take corrective action to mitigate adverse environmental consequences as soon as practicable; and
 - (c) maintain a record of all inspections undertaken.

Table 5: Inspection of infrastructure requirements

Scope of inspection	Infrastructure location	Type of inspection	Frequency of inspection
Dewatering pipelines	Schedule 1 maps – Figure 2 and 3	Visual inspection for pipeline integrity	Daily, while operational.
4 x Turkey's nest dams	Schedule 1 maps – Figure 2 and 3	Visual inspection to confirm freeboard capacity specified in condition 6 is available.	Daily, when discharging into dams or significant rainfall events.
Open pit dewatering emission point	Schedule 1 maps – Figure 2	Visual inspection to confirm freeboard capacity specified in condition 8 is available.	Daily, when discharging into pits.

Monitoring during time limited operations

- 11.** The works approval holder must monitor emissions during time limited operations in accordance with Table .

Table 6: Emissions and discharge monitoring during time limited operations

Discharge point	Parameter	Frequency	Unit	Method
Greenback open pit, Penfolds open pit, Erebus Nth open pit, Erebus Sth open pit and Fuji open pit.	Volume of Water Discharged	Monthly ¹ (when discharging)	Kilolitres (kL)	None specified
	Pit lake water level	Quarterly ²	Meters below crest level	

Note 1: Monthly monitoring must be undertaken at least 15 days apart.

Note 2: Quarterly monitoring must be undertaken at least 45 days apart

Compliance reporting

- 12.** The works approval holder must submit to the CEO a report on the time limited operations within 30 calendar days of the completion date of time limited operations or 30 calendar days before the expiry date of the works approval, whichever is the sooner.
- 13.** The works approval holder must ensure the report required by condition 12 includes the following:
- a summary of the time limited operations, including timeframes and amount of throughput for each category;
 - a summary of monitoring results obtained during time limited operations under condition 11;
 - a record of the volume of waste tyres disposed into the Type II putrescible landfill, as required by condition 6;
 - a summary of the environmental performance of all infrastructure as constructed or installed (as applicable);
 - a review of performance and compliance against the conditions of the works approval; and

- (f) where the manufacturer's design specifications and the conditions of this works approval have not been met, what measures will the works approval holder take to meet them, and what timeframes will be required to implement those measures.

Records and reporting (general)

- 14.** The works approval holder must record the following information in relation to complaints received by the works approval holder (whether received directly from a complainant or forwarded to them by the Department or another party) about any alleged emissions from the premises:
 - (a) the name and contact details of the complainant, (if provided);
 - (b) the time and date of the complaint;
 - (c) the complete details of the complaint and any other concerns or other issues raised; and
 - (d) the complete details and dates of any action taken by the works approval holder to investigate or respond to any complaint.
- 15.** The works approval holder must maintain accurate and auditable books including the following records, information, reports, and data required by this works approval:
 - (a) the works conducted in accordance with condition 1;
 - (b) any maintenance of infrastructure that is performed in the course of complying with conditions 1 and 6;
 - (c) monitoring programmes undertaken in accordance with condition 11; and
 - (d) complaints received under condition 14.
- 16.** The books specified under condition 15 must:
 - (a) be legible;
 - (b) if amended, be amended in such a way that the original version(s) and any subsequent amendments remain legible and are capable of retrieval;
 - (c) be retained by the works approval holder for the duration of the works approval; and
 - (d) be available to be produced to an inspector or the CEO as required.

Definitions

In this works approval, the terms in Table 7 have the meanings defined.

Table 7: Definitions

Term	Definition
annual period	a 12 month period commencing from 1 January until 31 December of the same year.
books	has the same meaning given to that term under the EP Act.
CEO	means Chief Executive Officer. CEO for the purposes of notification means: Director General Department administering the <i>Environmental Protection Act 1986</i> Locked Bag 10 Joondalup DC WA 6919 info@dwer.wa.gov.au
Department	means the department established under section 35 of the <i>Public Sector Management Act 1994</i> and designated as responsible for the administration of Part V Division 3 of the EP Act.
discharge	has the same meaning given to that term under the EP Act.
emission	has the same meaning given to that term under the EP Act.
Environmental Compliance Report	means a report to satisfy the CEO that the conditioned infrastructure and/or equipment has been constructed and/or installed in accordance with the works approval.
EP Act	<i>Environmental Protection Act 1986</i> (WA).
EP Regulations	<i>Environmental Protection Regulations 1987</i> (WA).
premises	the premises to which this licence applies, as specified at the front of this licence and as shown on the premises map (Figure 1) in Schedule 1 to this works approval.
prescribed premises	has the same meaning given to that term under the EP Act.
time limited operations	refers to the operation of the infrastructure and equipment identified under this works approval that is authorised for that purpose, subject to the relevant conditions.
waste	has the same meaning given to that term under the EP Act.
works approval	refers to this document, which evidences the grant of the works approval by the CEO under section 54 of the EP Act, subject to the conditions.

Term	Definition
works approval holder	refers to the occupier of the premises being the person to whom this works approval has been granted, as specified at the front of this works approval.

END OF CONDITIONS

Schedule 1: Maps

Premises map

The boundary of the prescribed premises is shown in blue in the map below (Figure 1).

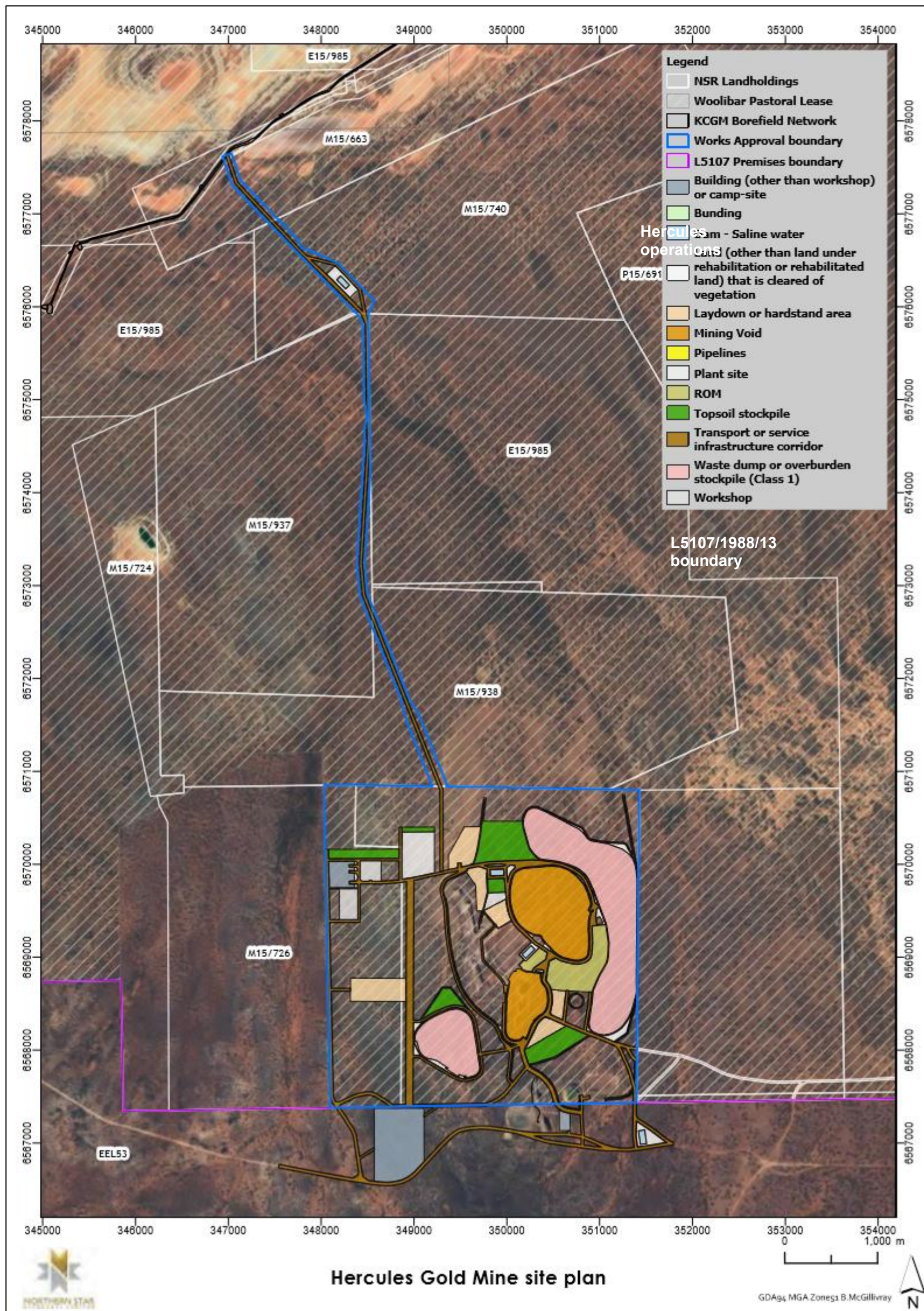


Figure 1: Map of the boundary of the prescribed premises

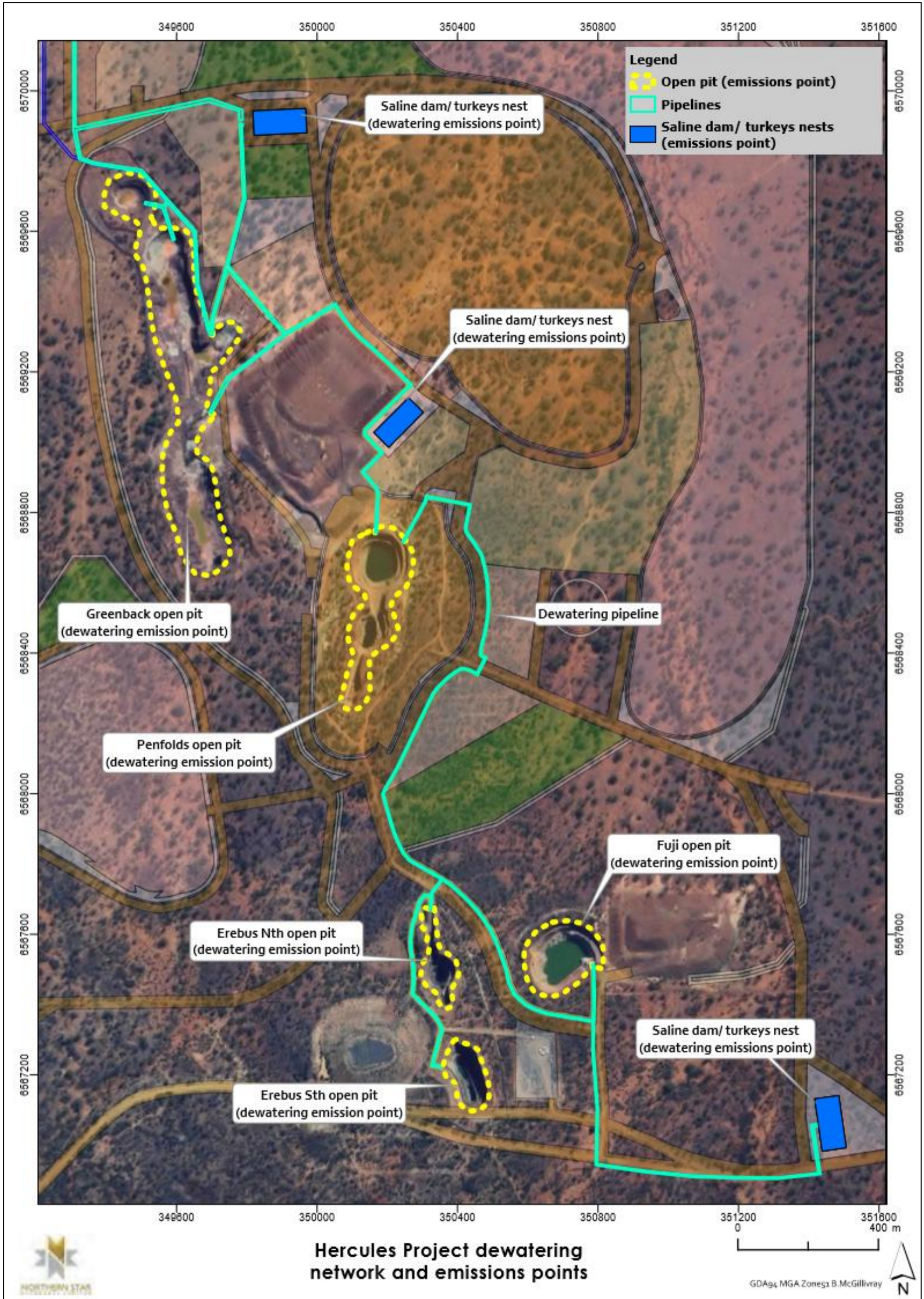


Figure 2: Hercules Project Infrastructure

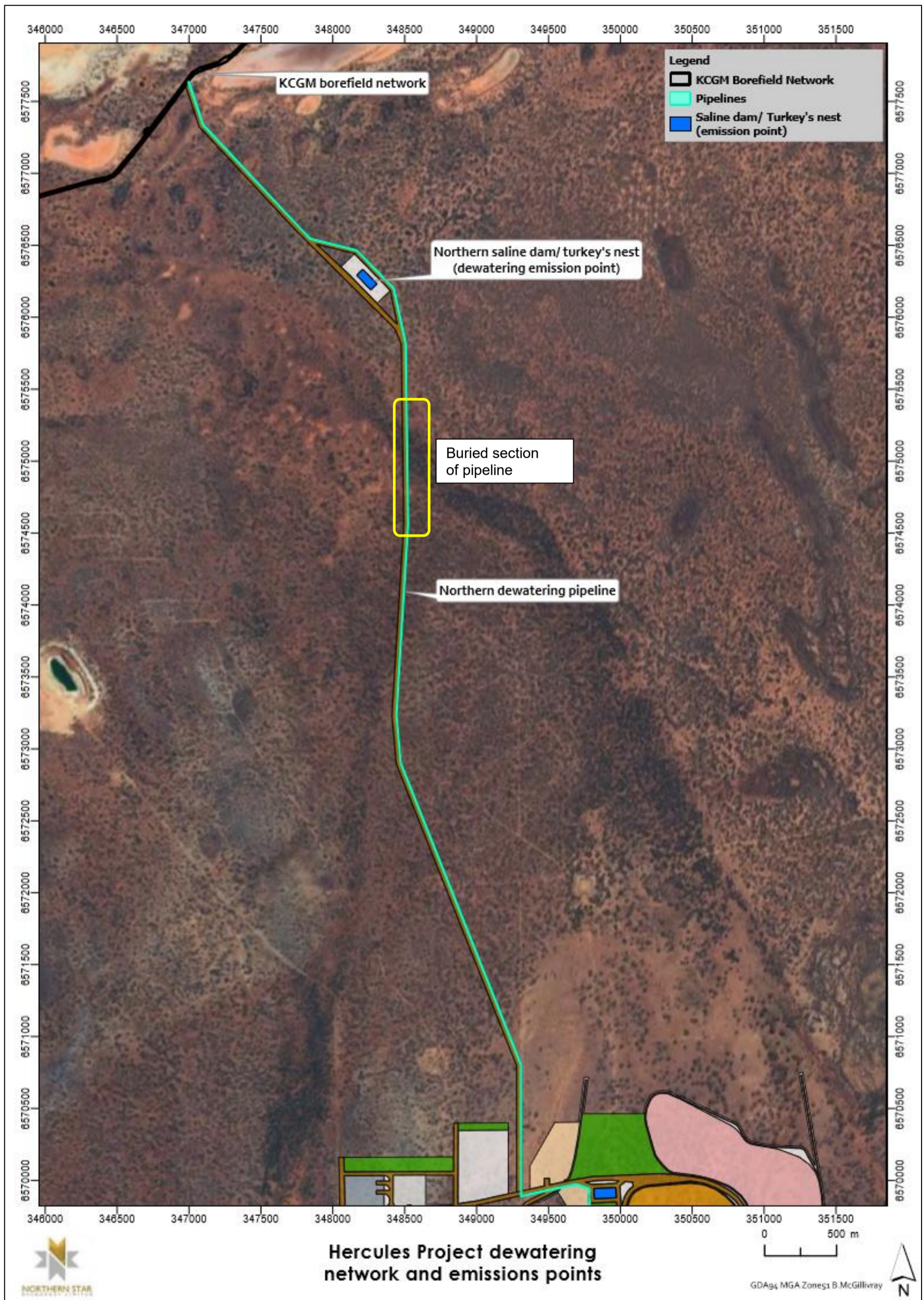


Figure 3: Hercules Northern Dewater Pipeline infrastructure

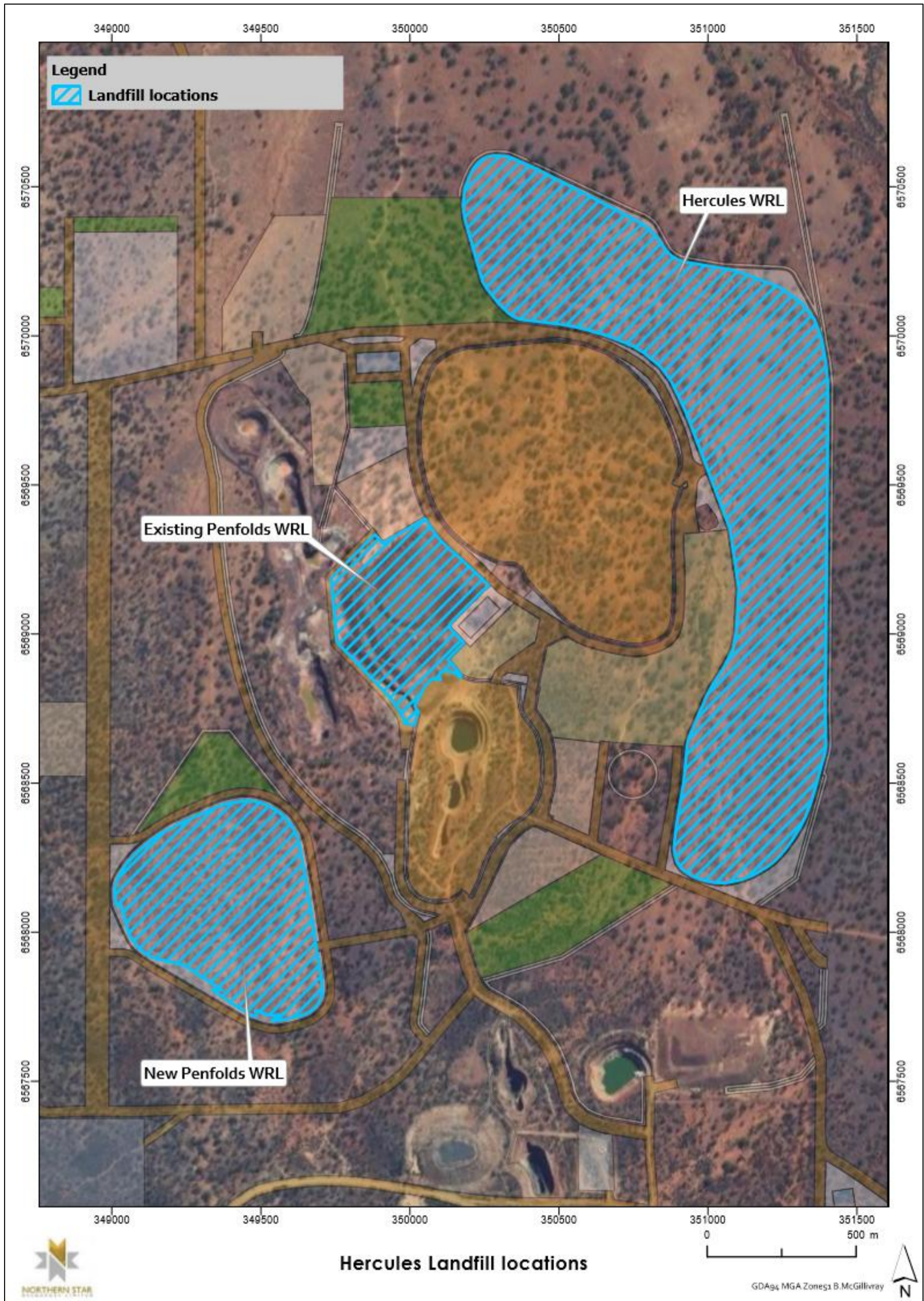


Figure 4: Putrescible landfill locations

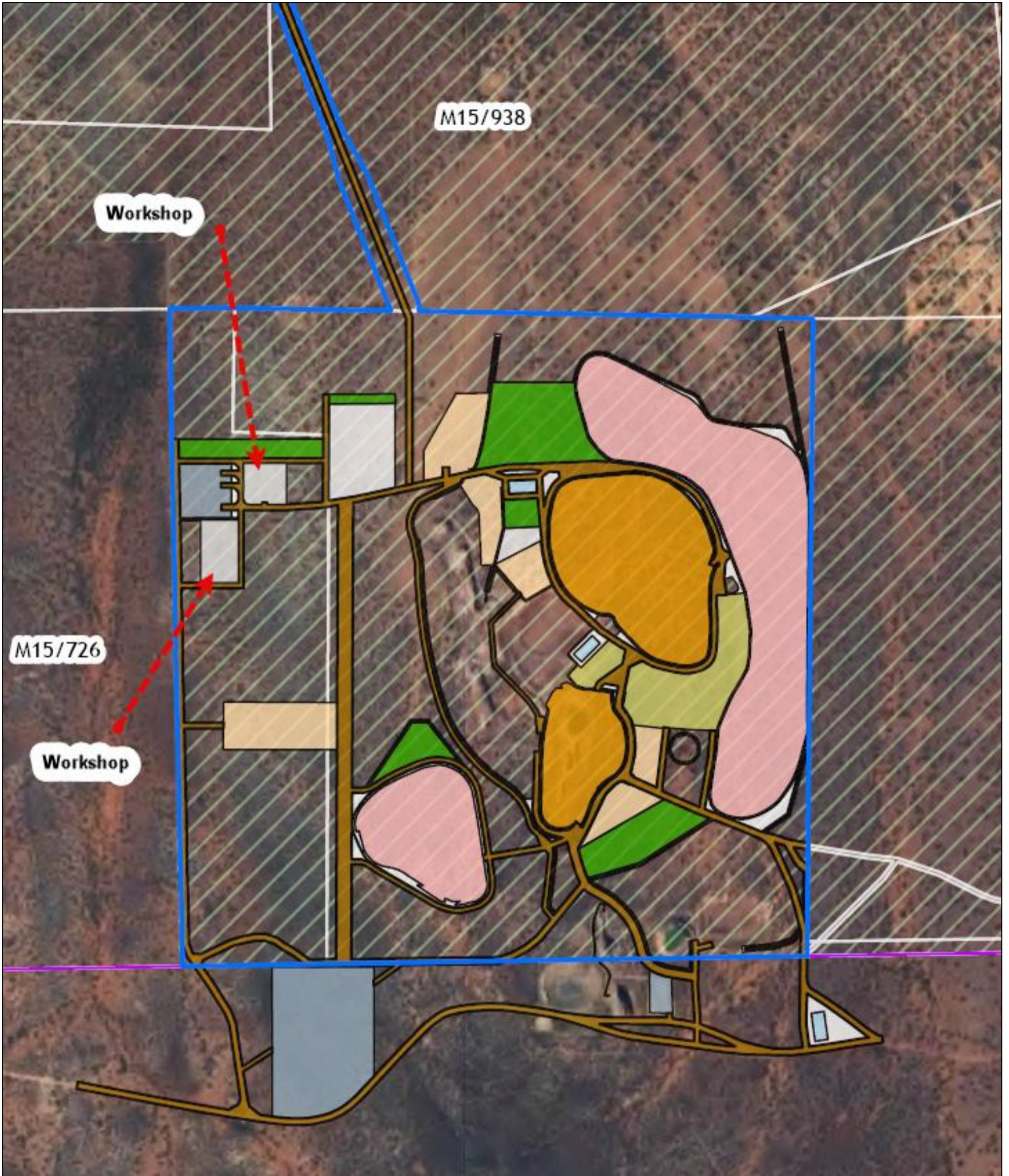


Figure 5: Hercules Workshop locations