



Works approval number W2933/2025/1

Works approval holder MULGA DOWNS IRON ORE PTY LTD
ACN 080 659 150
Registered business address HPPL House, 28-42 Ventnor Ave
WEST PERTH WA 6005
DWER file number APP-0026232

Duration 12/02/2026 to 11/02/2031

Date of issue 12/02/2026

Premises details Murrays Hill Infrastructure Project
Mulga Downs WA 6751.

Legal description -
Part of Mining Tenement L45/769
Mulga Downs WA 6751.

As defined by the premises maps attached to the
issued works approval

Prescribed premises category description (Schedule 1, <i>Environmental Protection Regulations 1987</i>)	Assessed production / design capacity
Category 12: Screening etc. of material: premises (other than premises within category 5 or 8) on which material extracted from the ground is screened, washed, crushed, ground, milled, sized or separated.	100,000 tonnes per year
Category 54: Sewage facility: premises — (a) on which sewage is treated (excluding septic tanks); or (b) the discharged waste water has a density greater than the average ambient density of the marine water at the discharge site.	120m ³ per day

This works approval is granted to the works approval holder, subject to the attached conditions, on 12 February 2026, by:

MANAGER, RESOURCE INDUSTRIES

Officer delegated under section 20 of the Environmental Protection Act 1986

Works approval history

Date	Reference number	Summary of changes
12/02/2026	W2933/2025/1	Works approval granted.

Interpretation

In this works approval:

- (a) the words 'including', 'includes' and 'include' in conditions mean "including but not limited to", and similar, as appropriate;
- (b) where any word or phrase is given a defined meaning, any other part of speech or other grammatical form of that word or phrase has a corresponding meaning;
- (c) where tables are used in a condition, each row in a table constitutes a separate condition;
- (d) any reference to an Australian or other standard, guideline, or code of practice in this works approval:
 - (i) if dated, refers to that particular version; and
 - (ii) if not dated, refers to the latest version and therefore may be subject to change over time;
- (e) unless specified otherwise, any reference to a section of an Act refers to that section of the EP Act; and
- (f) unless specified otherwise, all definitions are in accordance with the EP Act.

NOTE: This works approval requires specific conditions to be met but does not provide any implied authorisation for other emissions, discharges, or activities not specified in this works approval.

Works approval conditions

The works approval holder must ensure that the following conditions are complied with:

Construction phase

Infrastructure and equipment

1. The works approval holder must:
 - (a) construct and/or install the infrastructure and/or equipment;
 - (b) in accordance with the corresponding design and construction / installation requirements; and
 - (c) at the corresponding infrastructure location; and
 as set out in Table 1.

Table 1: Design and construction / installation requirements

	Infrastructure	Design and construction / installation requirements	Infrastructure location
1.	Crushing and screening unit consisting of: 1 x primary crusher (mobile) Jaw Crusher Metso C125 (or equivalent or superior) Up to 2 x screens (mobile) Mc Closkey S190 and cone crusher powerscreen 1300 (or equivalent or superior) Up to 3 x conveyors/stackers (mobile)	<ul style="list-style-type: none"> • Water cart available for dust suppression • Earthworks during high winds should be avoided (>50km/hr) • Stockpile areas to include a down gradient earthen surface water diversion structures to sedimentation basis to capture sediment laden stormwater. 	As per Schedule 1 Figure 1 – located in the borrow pit locations
2.	1 x Wastewater treatment plant (WWTP) consisting of two Sequential Batch Reactor units	<ul style="list-style-type: none"> • Containerised system with enclosed vessels and tanks. • Automated control and visual and audible alarms for upset conditions. • WWTP and tanks installed on concrete hardstand. • Sludge dewatering system and storage on bunded hardstand. • Level indicators (visible and audible) fitted on all sewage storage vessels to indicate that the facility is nearing capacity. • Chemicals stored in appropriate containers in accordance with Australian 	As per Schedule 1 Figure 1.

	Infrastructure	Design and construction / installation requirements	Infrastructure location
		<p>Standard 3780-2008 The storage and handling of corrosive substances.</p> <ul style="list-style-type: none"> All secondary containment facilities must have a minimum capacity of 110% of the largest storage vessel within the containment facility, plus 25% of the capacity of all stored individual containers. 	
3.	Spray Field	<ul style="list-style-type: none"> Sized 4.5 hectares Irrigation system designed to prevent run-off and spray drift 5 m buffer around Spray Field Perimeter bund around Spray Field to prevent ingress/egress of surface water Spray Field fenced with safety signage limiting access 	As per Schedule 1 Figure 1.

Compliance reporting

2. The works approval holder must within 30 calendar days of an item of infrastructure or equipment required by condition 1 being constructed and/or installed:
 - (a) undertake an audit of their compliance with the requirements of condition 1; and
 - (b) prepare and submit to the CEO an Environmental Compliance Report on that compliance.
3. The Environmental Compliance Report required by condition 2, must include as a minimum the following:
 - (a) certification by a suitably qualified person that the items of infrastructure or component(s) thereof, as specified in condition 1, have been constructed in accordance with the relevant requirements specified in condition 1;
 - (b) as constructed plans and a detailed site plan for each item of infrastructure or component of infrastructure specified in condition 1; and
 - (c) be signed by a person authorised to represent the works approval holder and contains the printed name and position of that person.

Environmental commissioning phase

Environmental commissioning requirements and emission limits

4. The works approval holder may only commence environmental commissioning of an

item of infrastructure listed in condition 5 once the Environmental Compliance Report has been submitted for that item of infrastructure in accordance with condition 2 of this works approval.

5. Any environmental commissioning activities undertaken for an item of infrastructure specified in Table 2 may only be carried out:
 - (a) in accordance with the corresponding commissioning requirements; and
 - (b) for the corresponding authorised commissioning duration.

Table 2: Environmental commissioning requirements

Infrastructure	Commissioning requirements	Authorised commissioning duration
WWTP and pipeline	<ul style="list-style-type: none"> • Operated, serviced and maintenance in accordance with manufacturer specifications. • Daily inspection of WWTP and pipelines 	For a period not exceeding 12 weeks.
Spray Field	<ul style="list-style-type: none"> • No more than 120m³ per day of treated wastewater to be applied across the spray field • Maintain the irrigation system that is designed to prevent run-off and spray drift. • Irrigation limited during periods of extended heavy rain • Maintain the perimeter bund around Spray Field to prevent ingress/egress of surface water • Maintain the Spray Field fence and safety signage • Treated wastewater must be evenly distributed over the irrigation areas to ensure no ponding or pooling occurs. 	

6. During environmental commissioning, the works approval holder must ensure that the emission specified in Table 3, are discharged only from the corresponding discharge points and only at the corresponding discharge point locations

Table 3: Authorized discharge points during commissioning

Emission	Discharge point location
Treated wastewater	Discharge pipe to spray field

Monitoring during environmental commissioning

7. The works approval holder must monitor emissions during environmental commissioning in accordance with Table 4.

Table 4: Emissions and discharge monitoring during commissioning

Discharge point	Parameter	Frequency	Averaging period	Unit	Method
Discharge pipe to spray field	Flow	Continuous	-	m ³ /day	Calibrated flow meter
	pH		-	-	Calibrated flow meter
	Chlorine	Monthly	Spot sample	Mg/L	AS5667.1 and AS5667.10
	Suspended Solids				
	Total BOD				
	Inorganic nitrogen				
	Reactive phosphorous				
	E-coli				
	Trace contaminants	Annually	Mg/L		

8. All sample analysis must be undertaken by laboratories with current accreditation from the National Association of Testing Authorities (NATA) for relevant parameters, unless otherwise specified in Table 4.

Environmental Commissioning Report

9. The works approval holder must submit to the CEO an Environmental Commissioning Report within 30 calendar days of the completion date of environmental commissioning for each item of infrastructure specified in Table 2.
10. The works approval holder must ensure the Environmental Commissioning Report required by condition 9 of this works approval includes the following:
 - (a) a summary of the environmental commissioning activities undertaken, including date(s) for commencement of commissioning, timeframes and amount of wastewater processed;
 - (b) a summary of treated wastewater monitoring results recorded in accordance with condition 7;
 - (c) copies of laboratory reports for treated wastewater monitoring results recorded in accordance with condition 7;
 - (d) a summary of the environmental performance of each item of infrastructure or equipment as installed, which at minimum includes:
 - (i) a comparison of the treated wastewater monitoring results against discharge limits specified in condition 16;
 - (ii) assessment of the irrigation spray field performance against operational requirements in condition 5;
 - (e) a review of the works approval holder’s performance and compliance against the conditions of this works approval; and

- (f) where they have not been met, measures proposed to meet the manufacturer's design specifications and the conditions of this works approval, together with timeframes for implementing the proposed measures.

Time limited operations phase

Commencement and duration

11. The works approval holder may only commence time limited operations for an item of infrastructure identified in condition 1:
- where the item of infrastructure is not authorised to undertake environmental commissioning, the Environmental Compliance Report as required by condition 4 has been submitted by the works approval holder for that item of infrastructure; and
 - where the item of infrastructure is authorised to undertake environmental commissioning under condition 5, the Environmental Commissioning Report for that item of infrastructure as required by condition 9 has been submitted by the works approval holder.
12. The works approval holder may conduct time limited operations for an item of infrastructure specified in condition 13:
- for a period not exceeding 120 calendar days from the day the works approval holder meets the requirements of condition 11 for that item of infrastructure; or
 - until such time as a licence for that item of infrastructure is granted in accordance with Part V of the Environmental Protection Act 1986, if one is granted before the end of the period specified in condition 12(a).

Time limited operations requirements and emission limits

13. During time limited operations, the works approval holder must ensure that the premises infrastructure and equipment listed in Table 5 and located at the corresponding infrastructure location is maintained and operated in accordance with the corresponding operational requirement set out in Table 5.

Table 5: Infrastructure and equipment requirements during time limited operations

	Site infrastructure and equipment	Operational requirement	Infrastructure location
1.	Crushing and screening unit consisting of: 1 x primary crusher (mobile) Up to 2 x screens (mobile) Up to 3 x conveyors/stackers (mobile)	<ul style="list-style-type: none"> Operated, serviced and maintenance in accordance with manufacturer specifications Stockpile areas to maintain a down gradient earthen surface water diversion structures to sedimentation basis to capture sediment laden stormwater. Water reuse within the crushing and screening area to be prioritized Any potentially laden stormwater captured within the project footprint to be contained, tested and treated. 	Figure 1 – at the borrow pit locations

	Site infrastructure and equipment	Operational requirement	Infrastructure location
2.	1 x Wastewater treatment plant (WWTP) consisting of two Sequential Batch Reactor units	<ul style="list-style-type: none"> • WWTP operated, serviced and maintenance in accordance with manufacturer specifications. • Maintenance of: Containerised system with enclosed vessels and tanks, automated control and visual and audible alarms for upset conditions. • Maintenance of: concrete hardstand of WWTP and tanks installed, bunded hardstand of sludge dewatering system and storage location. • Maintenance of level indicators (visible and audible) fitted on all sewage storage vessels to indicate that the facility is nearing capacity. • Chemicals stored in appropriate containers in accordance with Australian Standard 3780-2008 The storage and handling of corrosive substances. • In all secondary containment facilities, maintain a minimum capacity of 110% of the largest storage vessel within the containment facility, plus 25% of the capacity of all stored individual containers. • Daily inspection of WWTP and pipelines 	Figure 1
3.	Spray Field	<ul style="list-style-type: none"> • No more than 120m³ per day of treated wastewater to be applied across the spray field • Maintain the irrigation system that is designed to prevent run-off and spray drift. • Irrigation limited during periods of extended heavy rain • Maintain the perimeter bund around Spray Field to prevent ingress/egress of surface water • Maintain the Spray Field fence and safety signage • Treated wastewater must be evenly distributed over the irrigation areas to ensure no ponding or pooling occurs. 	Figure 1

14. The works approval holder must manage dust generation from the crushing and screening plant at the premises by:
- (a) Use of a water cart for dust suppression;
 - (b) Ceasing dust-generating activities during strong wind conditions (>50km/hr); and

(c) Material stockpile heights must be minimised, with a maximum height of 4 metres.

15. During time limited operations, the works approval holder must ensure that the emission specified in Table 6, are discharged only from the corresponding discharge points and only at the corresponding discharge point locations

Table 6: Authorized discharge points during time limited operations

Emission	Discharge point location
Treated wastewater	Discharge pipe to spray field

16. During time limited operations, the works approval holder must ensure that the emissions from the discharge point listed in Table 7 do not exceed the corresponding limit(s) when monitored at the discharge point in accordance with condition 17.

Table 7: Emission and discharge limits during time limited operations

Parameter	Units	Effluent specification
Hydraulic Capacity	kL/d	120
BOD	mg/L	<20
SS	mg/L	<30
Total nitrogen	mg/L	<30
Total Phosphorus	mg/L	<8
pH	pH units	6.5-8.5
E.coli	cfu/100 mL	<1000
Chlorine	mg/L	0.2-2.0

Monitoring during time limited operations

17. The works approval holder must monitor emissions during time limited operations in accordance with Table 8.

Table 8: Emissions and discharge monitoring during time limited operations

Discharge point	Parameter	Frequency	Averaging period	Unit	Method
Discharge pipe to spray field	Flow	Continuous	-	m ³ /day	Calibrated flow meter
	pH	Daily	-	-	Calibrated

Discharge point	Parameter	Frequency	Averaging period	Unit	Method
	Chlorine				flow meter
	Suspended Solids	Weekly	Spot sample	Mg/L	AS5667.1 and AS5667.10
	Total BOD				
	Inorganic nitrogen				
	Reactive phosphorous				
	E-coli				
	Trace contaminants	Annually		Mg/L	

18. All sample analysis must be undertaken by laboratories with current accreditation from the National Association of Testing Authorities (NATA) for relevant parameters, unless otherwise specified in Table 8.

Compliance reporting

19. The works approval holder must submit to the CEO a report on the time limited operations within 30 calendar days of the completion date of time limited operations or 30 calendar days before the expiration date of the works approval, whichever is the sooner.
20. The works approval holder must ensure the report required by condition 19 includes the following:
- a summary of the time limited operations, including timeframes and throughputs processed;
 - a summary of monitoring parameter results obtained during time limited operations under condition 17.
 - copies of laboratory reports for treated wastewater monitoring results recorded in accordance with condition 17;
 - a summary of the environmental performance of each item of infrastructure or equipment as installed, which at minimum includes:
 - a comparison of the treated wastewater monitoring results against discharge limits specified in condition 16;
 - assessment of the spray irrigation field performance against operational requirements in condition 13;
 - a review of performance and compliance against the conditions of the works approval and the Environmental Commissioning Report; and
 - where the manufacturer's design specifications and the conditions of this works approval have not been met, what measures will the works approval holder take to meet them, and what timeframes will be required to implement those measures.

Records and reporting (general)

21. The works approval holder must record the following information in relation to complaints received by the works approval holder (whether received directly from a

complainant or forwarded to them by the Department or another party) about any alleged emissions from the premises:

- (a) the name and contact details of the complainant, (if provided);
- (b) the time and date of the complaint;
- (c) the complete details of the complaint and any other concerns or other issues raised; and
- (d) the complete details and dates of any action taken by the works approval holder to investigate or respond to any complaint.

22. The works approval holder must maintain accurate and auditable books including the following records, information, reports, and data required by this works approval:

- (a) the works conducted in accordance with condition 1;
- (b) any maintenance of infrastructure that is performed in the course of complying with condition 5 and 13;
- (c) monitoring programmes undertaken in accordance with conditions 7 and 17; and
- (d) complaints received under condition 21.

23. The books specified under condition 22 must:

- (a) be legible;
- (b) if amended, be amended in such a way that the original version(s) and any subsequent amendments remain legible and are capable of retrieval;
- (c) be retained by the works approval holder for the duration of the works approval; and
- (d) be available to be produced to an inspector or the CEO as required.

Definitions

In this works approval, the terms in Table 9 have the meanings defined.

Table 9: Definitions

Term	Definition
books	has the same meaning given to that term under the EP Act.
CEO	means Chief Executive Officer. CEO for the purposes of notification means: Director General Department administering the <i>Environmental Protection Act 1986</i> Locked Bag 10 Joondalup DC WA 6919 info@dwer.wa.gov.au
Department	means the department established under section 35 of the <i>Public Sector Management Act 1994</i> and designated as responsible for the administration of Part V Division 3 of the EP Act.
discharge	has the same meaning given to that term under the EP Act.
emission	has the same meaning given to that term under the EP Act.
environmental commissioning	means the sequence of activities to be undertaken to test equipment integrity and operation, or to determine the environmental performance, of equipment and infrastructure to establish or test a steady state operation and confirm design specifications.
Environmental Commissioning Report	means a report on any commissioning activities that have taken place and a demonstration that they have concluded, with focus on emissions and discharges, waste containment, and other environmental factors.
Environmental Compliance Report	means a report to satisfy the CEO that the conditioned infrastructure and/or equipment has been constructed and/or installed in accordance with the works approval.
EP Act	<i>Environmental Protection Act 1986 (WA)</i> .
EP Regulations	<i>Environmental Protection Regulations 1987 (WA)</i> .
premises	the premises to which this licence applies, as specified at the front of this licence and as shown on the premises map in Schedule 1 to this works approval.
prescribed premises	has the same meaning given to that term under the EP Act.
suitably qualified	Means a person certified to install and/or operate the infrastructure/equipment by the manufacturer or supplier of the

Term	Definition
person	infrastructure/equipment.
time limited operations	refers to the operation of the infrastructure and equipment identified under this works approval that is authorised for that purpose, subject to the relevant conditions.
works approval	refers to this document, which evidences the grant of the works approval by the CEO under section 54 of the EP Act, subject to the conditions.
works approval holder	refers to the occupier of the premises being the person to whom this works approval has been granted, as specified at the front of this works approval.

END OF CONDITIONS

Schedule 1: Maps

Premises map

The boundary of the prescribed premises is shown in the map below (Figure 1). Please note that the location of the crushing and screening unit will be contained within the borrow pits.

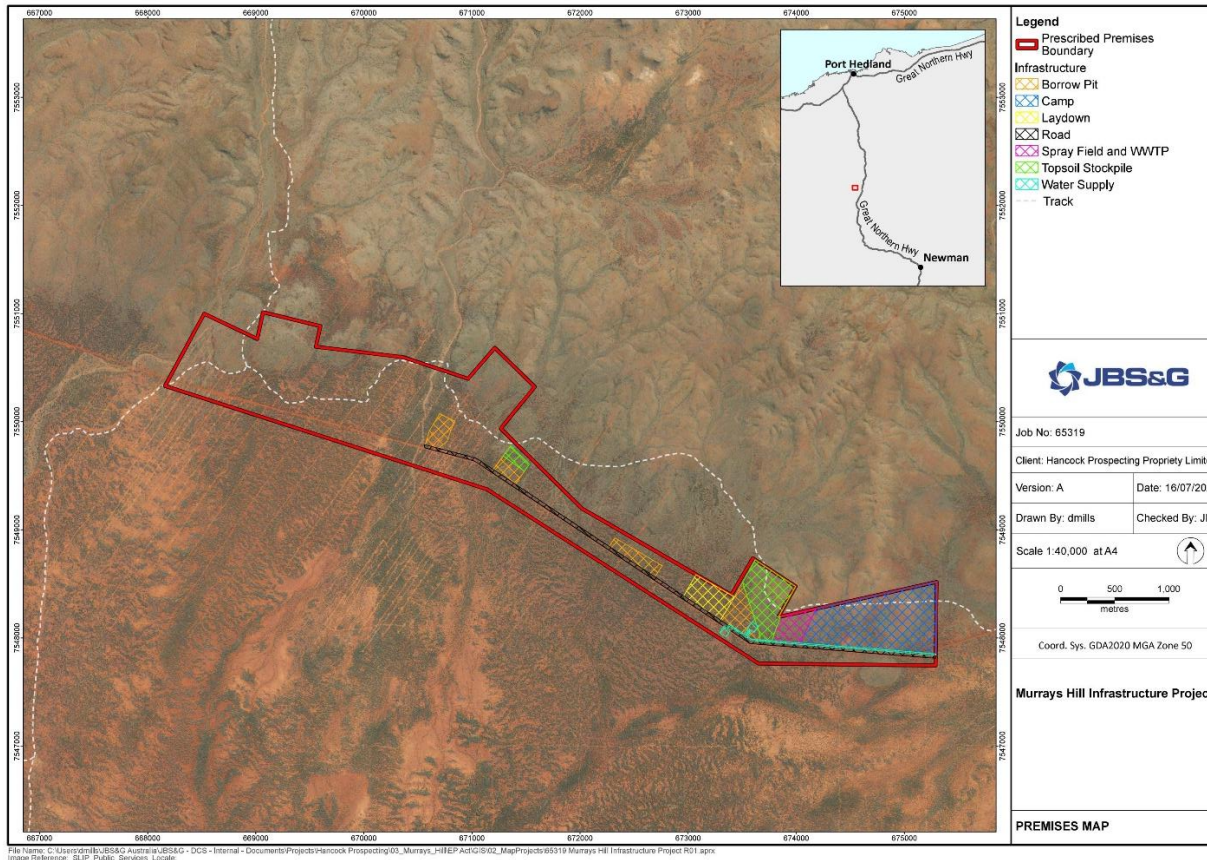


Figure 1: Map of the boundary of the prescribed premises

W2933/2025/1 (12/02/2026)

IR-T05 Works approval template (v6.0) (September 2022)