



Works approval number W3152/2025/1

Works approval holder GSM Mining Company Pty Ltd
ACN 165 235 030
Registered business address Level 4, 235 St Georges Terrace
Perth WA 6000
DWER File number INS-0003152

Duration 06/02/2026 to 05/02/2031

Date of issue 06/02/2026

Premises details Granny Smith Gold Mine
Part of Mining tenements L38/144, M38/397, and
M38/692

Prescribed premises category description (Schedule 1, <i>Environmental Protection Regulations 1987</i>)	Assessed design capacity
Category 52: Electric power generation	35 MW using LNG
Category 73 – Bulk storage of chemicals, etc.	1,000 m ³

This works approval is granted to the works approval holder, subject to the attached conditions, on 6 February 2026, by:

SARAH BLAKE
MANAGER, HEAVY INDUSTRIES,
STATEWIDE DELIVERY (ENVIRONMENTAL REGULATIONS)
Officer delegated under section 20 of the Environmental Protection Act 1986

Works approval history

Date	Reference number	Summary of changes
06/02/2026	W3152/2025/1	Works approval granted.

Interpretation

In this works approval:

- (a) the words 'including', 'includes' and 'include' in conditions mean "including but not limited to", and similar, as appropriate;
- (b) where any word or phrase is given a defined meaning, any other part of speech or other grammatical form of that word or phrase has a corresponding meaning;
- (c) where tables are used in a condition, each row in a table constitutes a separate condition;
- (d) any reference to an Australian or other standard, guideline, or code of practice in this works approval:
 - (i) if dated, refers to that particular version; and
 - (ii) if not dated, refers to the latest version and therefore may be subject to change over time;
- (e) unless specified otherwise, any reference to a section of an Act refers to that section of the EP Act; and
- (f) unless specified otherwise, all definitions are in accordance with the EP Act.

NOTE: This works approval requires specific conditions to be met but does not provide any implied authorisation for other emissions, discharges, or activities not specified in this works approval.

Works approval conditions

The works approval holder must ensure that the following conditions are complied with:

Construction phase

Infrastructure and equipment

1. The works approval holder must:
 - (a) construct and/or install the infrastructure and/or equipment;
 - (b) in accordance with the corresponding design and construction / installation requirements; and
 - (c) at the corresponding infrastructure location as set out in Table 1.

Table 1: Design and construction / installation requirements

	Infrastructure	Design and construction / installation requirements	Infrastructure location
Category 52: Stage 1			
1.	14 x 1.5 MW LNG fueled Jenbacher generators	a) A water cart will be on-site during construction and utilised as necessary to minimise dust emissions b) Generators must be installed in accordance with the manufacturer's specifications. c) Each generator contained in modified shipping container. d) Emissions must be directed through an exhaust outlet on top of the container ensuring that exhaust gases are discharged vertically	1 to 14 in Schedule 1 Figure 2
Category 52: Stage 2			
2.	9 x 1.5 MW LNG fueled Jenbacher generators	a) A water cart will be on-site during construction and utilised as necessary to minimise dust emissions b) Generators must be installed in accordance with the manufacturer's specifications. c) Each generator contained in modified shipping container. d) Emissions must be directed through an exhaust outlet on top of the container ensuring that exhaust gases are discharged vertically	15 to 23 in Schedule 1 Figure 2
Category 73			
3.	Glycol Storage for cooling plant	(i) Stored within an impervious bunded concrete compound capable of containing 110% of the volume of the largest container in the bund or 25% of the total volume stored, whichever is larger,	As shown in Schedule 1 Figure 3

	Infrastructure	Design and construction / installation requirements	Infrastructure location
		a) The storage vessel must be located back from the bund wall (or shielded) to prevent jetting of the liquid outside the bund b) Bunded areas shall drain towards a sump and include a sump pump for recovery of spilled liquids and stormwater (ii) Spill response material must be immediately available and accessible to the bund area.	

Compliance reporting

2. The works approval holder must within 30 calendar days of an item of infrastructure or equipment required by condition 1 being constructed and/or installed:
 - (a) undertake an audit of their compliance with the requirements of condition 1; and
 - (b) prepare and submit to the CEO an Environmental Compliance Report on that compliance.
3. The Environmental Compliance Report required by condition 2, must include as a minimum the following:
 - (a) certification by a qualified professional engineer that the items of infrastructure or component(s) thereof, as specified in condition 1, have been constructed in accordance with the relevant requirements specified in condition 1;
 - (b) as constructed plans and a detailed site plan for each item of infrastructure or component of infrastructure specified in condition 1; and
 - (c) be signed by a person authorised to represent the works approval holder and contains the printed name and position of that person.

Environmental commissioning phase

Environmental commissioning requirements and emission limits

4. This works approval authorises environmental commissioning of items of infrastructure listed in Table 1 specific to Category 52.
5. The works approval holder may only commence environmental commissioning of an item of infrastructure listed in Table 1, specific to Category 52 once the Environmental Compliance Report has been submitted for that item of infrastructure in accordance with condition 2 of this works approval.
6. The works approval holder must ensure that environmental commissioning lasts no more than 180 calendar days for each of Stage 1 and Stage 2.

Authorised emission points to air

7. During environmental commissioning, the works approval holder must ensure that the emission(s) specified in Table 2, are discharged only from the corresponding discharge point(s) and only at the corresponding discharge point location(s).

Table 2: Authorised discharge points during commissioning

Emission	Discharge point	Discharge point location
Combustion gases NO _x , SO ₂ , CO, Particulates	Stack emission points 1 to 23	As shown in Schedule 1 Figure 2

Monitoring during environmental commissioning

8. The works approval holder must monitor emissions during environmental commissioning in accordance with Table 3.

Table 3: Emissions and discharge monitoring during environmental commissioning

Emission point reference	Parameter	Units ¹	Averaging period	Frequency ²	Sampling and analysis method
Numbers 1 to 23 exhaust from LNG fuelled generators	NO _x	mg/m ³ and g/s	>30 minutes	Two separate sample events separated by at least 30 days of emissions through each discharge point.	USEPA Method 7E

Note 1: All units are referenced to STP dry and 15% O₂.

Note 2: Monitoring shall be undertaken to reflect normal operating conditions and any limits or conditions on input or production

9. The works approval holder must record the results of all monitoring activities required by condition 8.
10. The works approval holder must ensure all sampling and analysis undertaken pursuant to condition 8 is undertaken by a holder of NATA accreditation for the relevant methods of sampling and analysis.

Environmental commissioning report

11. The works approval holder must submit to the CEO an Environmental Commissioning Report within 30 calendar days of the completion date of environmental commissioning for each item of infrastructure specified in Table 1 relevant to Category 52.
12. The works approval holder must ensure the Environmental Commissioning Report required by condition 11 of this works approval includes the following:
- a summary of the environmental commissioning activities undertaken, including timeframes and amount of MWe of electricity produced;
 - the point-source emissions monitoring results recorded in accordance with condition 8;
 - a summary of the environmental performance of each item of infrastructure or equipment as constructed or installed.
 - a review of the works approval holder's performance and compliance against the conditions of this works approval; and
 - where they have not been met, measures proposed to meet the manufacturer's design specifications and the conditions of this works approval, together with timeframes for implementing the proposed measures.

Time limited operations phase

Commencement and duration

- 13.** The works approval holder may only commence time limited operations for an item of infrastructure identified in condition 1:
- (a) where the item of infrastructure is not authorised to undertake environmental commissioning, the Environmental Compliance Report as required by condition 2 has been submitted by the works approval holder for that item of infrastructure; and
 - (b) where the item of infrastructure is authorised to undertake environmental commissioning under condition 4, the Environmental Commissioning Report for that item of infrastructure as required by condition 11 has been submitted by the works approval holder.
- 14.** The works approval holder may conduct time limited operations for an item of infrastructure specified in condition 16 (as applicable):
- (a) for a period not exceeding 180 calendar days for each of Stage 1 and Stage 2 from the day the works approval holder meets the requirements of condition 11 for that item of infrastructure;
 - (b) for a period not exceeding 180 calendar days for infrastructure installed under Category 73; or
 - (c) until such time as a licence for that item of infrastructure is granted in accordance with Part V of the *Environmental Protection Act 1986*, if one is granted before the end of the period specified in condition 14(a) and 14(b).
- 15.** The works approval holder must submit to the CEO notification of commencement of time limited operations of the infrastructure under Category 73 within 7 days of commencement.

Time limited operations requirements and emission limits

- 16.** During time limited operations, the works approval holder must ensure that the premises infrastructure and equipment listed in Table 4 and located at the corresponding infrastructure location is maintained and operated in accordance with the corresponding operational requirement set out in Table 4.

Table 4: Infrastructure and equipment requirements during time limited operations

	Site infrastructure and equipment	Operational requirement	Infrastructure location
1.	23 x 1.5 MW LNG fueled Jenbacher generators	<ul style="list-style-type: none"> a) Each generator contained in modified shipping container. b) Emissions must be directed through an exhaust outlet on top of the container ensuring that exhaust gases are discharged vertically 	1 to 23 in Schedule 1 Figure 2
2.	Glycol Storage	<ul style="list-style-type: none"> a) Stored within an impervious bunded concrete compound capable of containing 110% of the volume of the largest container in the bund or 25% of 	At location "Option A" or "Option B" as shown in Schedule 1 Figure 3

	Site infrastructure and equipment	Operational requirement	Infrastructure location
		<p>the total, whichever is larger,</p> <p>b) The storage vessel must be located back from the bund wall (or shielded) to prevent jetting of the liquid outside the bund</p> <p>c) Bunded areas shall drain towards a sump and include a sump pump for recovery of spilled liquids and stormwater.</p> <p>d) Bund capacity is to be maintained.</p> <p>e) Spill response material must be immediately available and accessible to the bund area</p>	

17. During time limited operations, the works approval holder must ensure that the emission(s) specified in Table 5, are discharged only from the corresponding discharge point(s) and only at the corresponding discharge point location(s).

Table 5: Authorised discharge points during time limited operations

Emission	Discharge point	Discharge point location
Combustion gases NO _x , SO ₂ , CO, Particulates	Stack emission points 1 to 23	As shown in Schedule 1 Figure 2

Compliance reporting

18. The works approval holder must submit to the CEO a report on the time limited operations within 30 calendar days of the completion date of time limited operations or 30 calendar days before the expiration date of the works approval, whichever is the sooner.
19. The works approval holder must ensure the report required by condition 18 includes the following:
- (a) a summary of the time limited operations, including timeframes and amount of MWe of electricity produced;
 - (b) a summary of the environmental performance of all infrastructure as constructed or installed (as applicable);
 - (c) a review of performance and compliance against the conditions of the works approval; and
 - (d) where the manufacturer's design specifications and the conditions of this works approval have not been met, what measures will the works approval holder take to meet them, and what timeframes will be required to implement those measures.

Records and reporting (general)

20. The works approval holder must record the following information in relation to complaints received by the works approval holder (whether received directly from a complainant or forwarded to them by the Department or another party) about any alleged emissions from the premises:

- (a) the name and contact details of the complainant, (if provided);
 - (b) the time and date of the complaint;
 - (c) the complete details of the complaint and any other concerns or other issues raised; and
 - (d) the complete details and dates of any action taken by the works approval holder to investigate or respond to any complaint.
- 21.** The works approval holder must maintain accurate and auditable books including the following records, information, reports, and data required by this works approval:
- (a) the works conducted in accordance with condition 1;
 - (b) any maintenance of infrastructure that is performed in the course of complying with condition 16;
 - (c) complaints received under condition 20.
- 22.** The books specified under condition 21 must:
- (a) be legible;
 - (b) if amended, be amended in such a way that the original version(s) and any subsequent amendments remain legible and are capable of retrieval;
 - (c) be retained by the works approval holder for the duration of the works approval; and
 - (d) be available to be produced to an inspector or the CEO as required.

Definitions

In this works approval, the terms in Table 6 have the meanings defined.

Table 6: Definitions

Term	Definition
CEO	means Chief Executive Officer. CEO for the purposes of notification means: Director General Department administering the <i>Environmental Protection Act 1986</i> Locked Bag 10 Joondalup DC WA 6919 info@dwer.wa.gov.au
Department	means the department established under section 35 of the <i>Public Sector Management Act 1994</i> and designated as responsible for the administration of Part V Division 3 of the EP Act.
discharge	has the same meaning given to that term under the EP Act.
emission	has the same meaning given to that term under the EP Act.
environmental commissioning	means the sequence of activities to be undertaken to test equipment integrity and operation, or to determine the environmental performance, of equipment and infrastructure to establish or test a steady state operation and confirm design specifications.
Environmental Commissioning Report	means a report on any commissioning activities that have taken place and a demonstration that they have concluded, with focus on emissions and discharges, waste containment, and other environmental factors.
Environmental Compliance Report	means a report to satisfy the CEO that the conditioned infrastructure and/or equipment has been constructed and/or installed in accordance with the works approval.
EP Act	<i>Environmental Protection Act 1986 (WA)</i> .
EP Regulations	<i>Environmental Protection Regulations 1987 (WA)</i> .
premises	the premises to which this works approval applies, as specified at the front of this works approval and as shown on the premises map (Figure 1) in Schedule 1 to this works approval.
prescribed premises	has the same meaning given to that term under the EP Act.
qualified professional engineer	means a person who holds a tertiary academic qualification in engineering and a minimum of three years experience working in the area of civil/construction engineering.
time limited	refers to the operation of the infrastructure and equipment

Term	Definition
operations	identified under this works approval that is authorised for that purpose, subject to the relevant conditions.
USEPA	United States (of America) Environmental Protection Agency
USEPA Method 7E	means USEPA Method 7E Determination of Nitrogen Oxides Emissions From Stationary Sources (Instrumental Analyzer Procedure)
works approval	refers to this document, which evidences the grant of the works approval by the CEO under section 54 of the EP Act, subject to the conditions.
works approval holder	refers to the occupier of the premises being the person to whom this works approval has been granted, as specified at the front of this works approval.

END OF CONDITIONS

Schedule 1: Maps

Premises map

The boundary of the prescribed premises is shown in the map below (Figure 1).

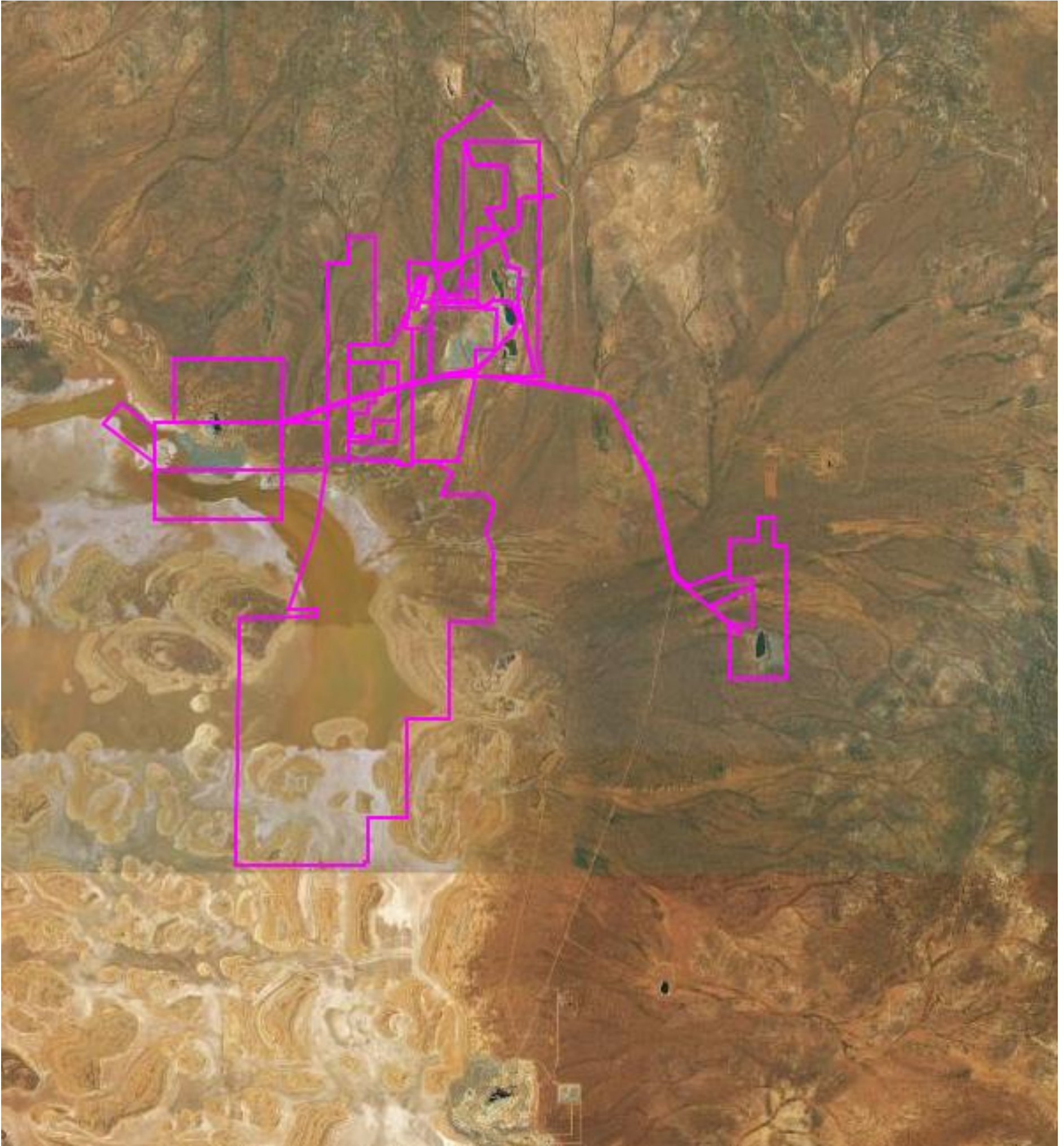


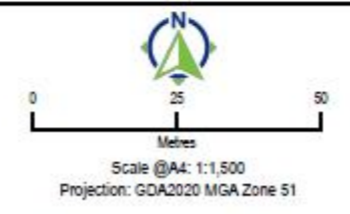
Figure 1: Map of the boundary of the prescribed premises



Label	E_GDA20z51	N_GDA20z51
1	437342.25	6809223.77
2	437352.10	6809226.95
3	437356.81	6809228.48
4	437362.20	6809230.23
5	437366.86	6809231.81
6	437377.29	6809235.20
7	437381.89	6809236.73
8	437386.60	6809238.32
9	437391.31	6809239.86
10	437401.63	6809243.30
11	437406.28	6809244.83
12	437410.99	6809246.42
13	437415.65	6809248.01
14	437425.97	6809251.34
15	437430.73	6809252.87
16	437391.73	6809222.71
17	437396.44	6809224.25
18	437406.26	6809227.50
19	437410.95	6809229.04
20	437416.13	6809230.76
21	437420.89	6809232.34
22	437431.21	6809235.73
23	437435.92	6809237.26

Power Station Upgrade Emission Sources

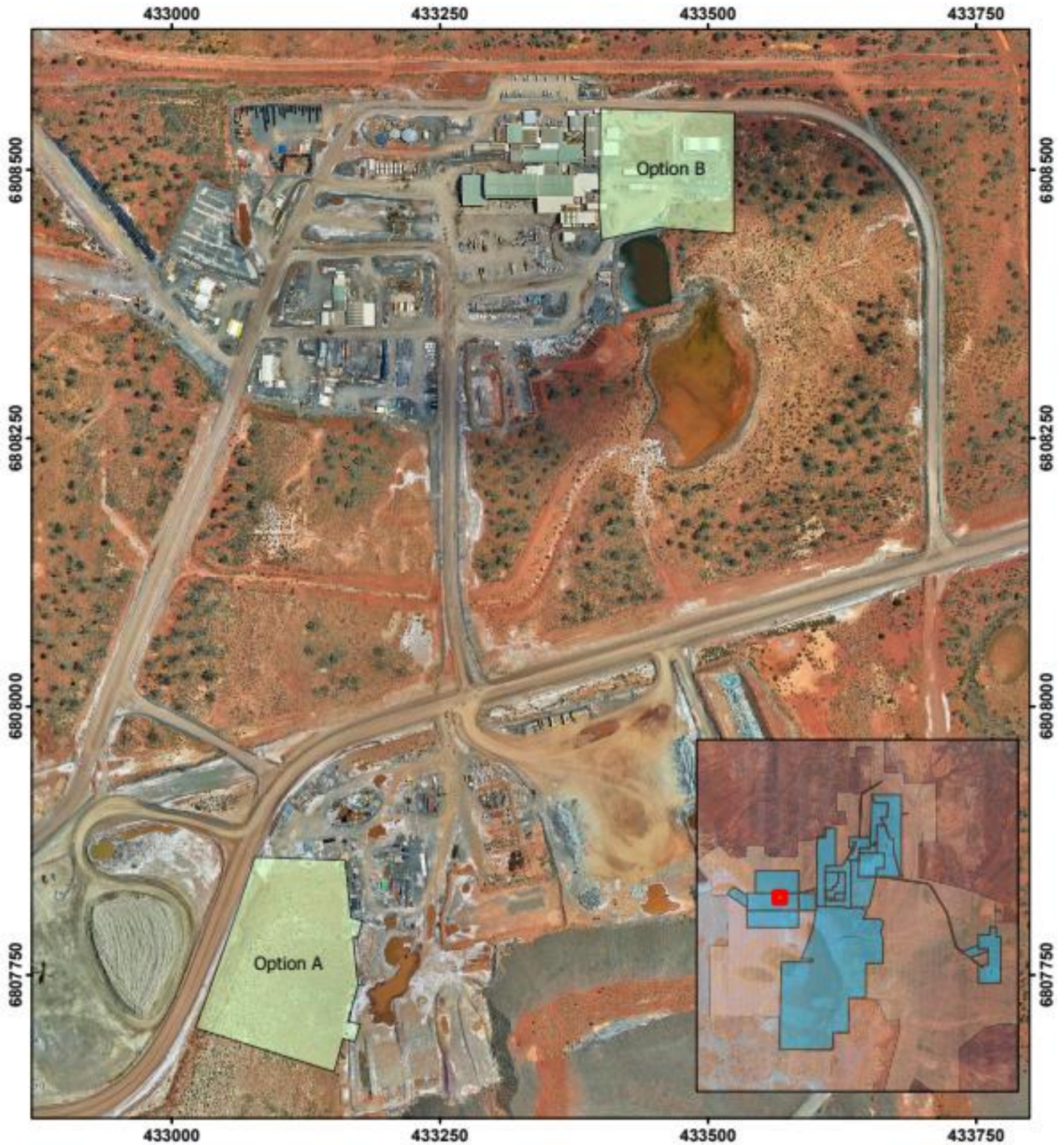
- LEGEND**
- Prescribed premises boundary
 - Power plant disturbance envelope
 - Proposed power plant schematic
 - Emission source
- Sensitive Receptors**
- Aboriginal Cultural Heritage - Register (DPLH-099)
 - Aboriginal Cultural Heritage - Lodged (DPLH-100)
 - Minor roads



Client: Gold fields Australia Pty Ltd
 Project and Phase: 1002001
 Date: Geoscience Australia
 Aboriginal Cultural Heritage - Lodged (DPLH-100):
 World Imagery: Earthstar Geographics
 Minor Roads:
 Aboriginal Cultural Heritage - Register (DPLH-099):
 Google Earth Imagery :12/12/2023

CDM Smith
 listen. think. deliver.

Figure 2: Proposed power station with emission points and disturbance envelope



Granny Smith Gold Mine
Figure 3 - Bulk Storage Locations

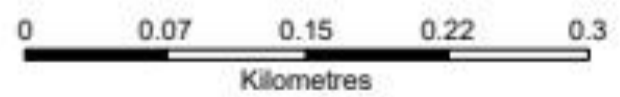


Coordinate System:
 GDA2020 MGA Zone 51



LEGEND

- Bulk Storage Options
- Option A
- Option B
- DWER Licence - Prescribed Premise



Copyright © 2025, Gold Fields Pty Ltd.
 All rights reserved. This map is a technical drawing and should not be used for any other purpose without the written consent of the
 Technical Drawing Department Pty Ltd.

Date: 03/02/2025
 Created: 03/02/2025
 Name: Gas Power Station Upgrade - Au2025 Pro

Figure 3: Locations of bulk storage of glycol