



Works approval number	W3136/2025/1	
Works approval holder	Paddington Gold Pty Ltd	
ACN	008 585 886	
Registered business address	Viskovich House Level 1, 377 Hannan Street KALGOORLIE WA 6430	
DWER reference number	APP-0031208	
Duration	27/01/2026 to	26/01/2029
Date of issue	27/01/2026	
Premises details	Rose Pit Legal description Mining Tenement M24/81, M24/82, M24/234, M24/265 and M24/266. As defined by the coordinates in Schedule 2 of the works approval	

Prescribed premises category description (Schedule 1, <i>Environmental Protection Regulations 1987</i>)	Assessed design capacity
Category 5: Processing or beneficiation of metallic or non-metallic ore	1,000,000 tonnes per annum

This works approval is granted to the works approval holder, subject to the attached conditions, on 27 January 2026, by:

A/SENIOR MANAGER, HEAVY INDUSTRIES

an officer delegated under section 20 of the *Environmental Protection Act 1986* (WA)

Interpretation

In this works approval:

- (a) the words 'including', 'includes' and 'include' in conditions mean "including but not limited to", and similar, as appropriate;
- (b) where any word or phrase is given a defined meaning, any other part of speech or other grammatical form of that word or phrase has a corresponding meaning;
- (c) where tables are used in a condition, each row in a table constitutes a separate condition;
- (d) any reference to an Australian or other standard, guideline, or code of practice in this works approval:
 - (i) if dated, refers to that particular version; and
 - (ii) if not dated, refers to the latest version and therefore may be subject to change over time;
- (e) unless specified otherwise, any reference to a section of an Act refers to that section of the EP Act; and
- (f) unless specified otherwise, all definitions are in accordance with the EP Act.

NOTE: This works approval requires specific conditions to be met but does not provide any implied authorisation for other emissions, discharges, or activities not specified in this works approval.

Works approval conditions

The works approval holder must ensure that the following conditions are complied with:

Construction phase

Infrastructure and equipment

1. The works approval holder must:
 - (a) construct or install the infrastructure or equipment;
 - (b) in accordance with the corresponding design and construction / installation requirements; and
 - (c) at the corresponding infrastructure location;
 as set out in Table 1.

Table 1: Design and construction / installation requirements

	Infrastructure	Design and construction / installation requirements	Infrastructure location
1.	Crushing and screening plant comprising of: <ul style="list-style-type: none"> • 3 x crushers (primary, secondary and tertiary); • Primary crusher feeder; • Grizzly feeder; • 2 x pan feeders; • 12 x belt conveyors; • 2 x surge hoppers; • Tramp metal magnet; • 2 x screens; and • Ore sorting attachment 	(a) Located on the ROM hardstand. (b) Water sprays installed on the feed bin, and at conveyor transfer points	Located on the Run of Mine (ROM) pad, as shown in Schedule 1 Figure 2
2.	Run of Mine (ROM) pad	(a) Constructed to ensure that all stormwater within the ROM pad is retained, via earthen bunds, and stormwater is directed to containment sumps; and (b) Constructed with stormwater diversion structures to prevent stormwater ingress onto ROM pad.	
3.	Hydrocarbon storage	(a) Must meet AS1940:2017; and (b) Spill recovery and clean up materials to be installed/established and maintained at all hydrocarbon/ hazardous material storage areas.	

Compliance reporting

2. The works approval holder must within 30 calendar days of an item of infrastructure or equipment required by condition 1 being constructed and/or installed:
 - (a) undertake an audit of their compliance with the requirements of condition 1; and
 - (b) prepare and submit to the CEO an Environmental Compliance Report on that compliance.
3. The Environmental Compliance Report required by condition 2, must include as a minimum the following:
 - (a) Certification that the items of infrastructure or component(s) thereof, as specified in condition 1, have been constructed in accordance with the relevant requirements specified in condition 1;
 - (b) as constructed plans and a detailed site plan for each item of infrastructure or component of infrastructure specified in condition; and
 - (c) be signed by a person authorised to represent the works approval holder and contains the printed name and position of that person.

Time limited operations phase

Commencement and duration

4. The works approval holder may only commence time limited operations for an item of infrastructure identified in condition 1 where the Environmental Compliance Report as required by condition 2 has been submitted by the works approval holder for that item of infrastructure.
5. The works approval holder may conduct time limited operations for an item of infrastructure specified in condition 6 (as applicable):
 - (a) for a period not exceeding 180 calendar days from the day the works approval holder meets the requirements of condition 4 for that item of infrastructure; or
 - (b) until such time as licence L8327/2008/2 for that item of infrastructure is amended in accordance with Part V of the *Environmental Protection Act 1986*, if amended before the end of the period specified in condition 5(a).

Time limited operations requirements

6. During time limited operations, the works approval holder must ensure that the premises infrastructure and equipment listed in Table 2 and located at the corresponding infrastructure location is maintained and operated in accordance with the corresponding operational requirement set out in Table 2.

Table 2: Infrastructure and equipment requirements during time limited operations

	Site infrastructure and equipment	Operational requirement	Infrastructure location
1.	Mobile crushing and screening plant	(a) Operated on the ROM hardstand; (b) Water sprays to operate on the feed bin, at strategic conveyor transfer points to minimise dust generation. (c) Conduct visual inspections during the operation and crushing and screening plant to ensure that dust suppression activities are effective and implement additional dust control where necessary.	Located on the Run of Mine (ROM) pad as shown in Schedule 1 Figure 2
2.	Run of Mine (ROM) pad	(a) Water cart equipped with a canon must be available to suppress visible emissions of fugitive dust from the crushing and screening plant; (b) Water carts must be used on stockpiles and high traffic areas to minimise dust generation; and (c) All stormwater to be retained on the ROM pad;	

7. The works approval holder must immediately recover or remove and dispose of spills of environmentally hazardous materials outside an engineered containment system.

Compliance reporting

8. The works approval holder must submit to the CEO a report on the time limited operations within 30 calendar days of the completion date of time limited operations or 10 calendar days before the expiration date of the works approval, whichever is the sooner.
9. The works approval holder must ensure the report required by condition 8 includes the following:
- a summary of the time limited operations, including timeframes and amount of material processed;
 - a summary of the environmental performance of all infrastructure as constructed or installed
 - a review of performance and compliance against the conditions of the works approval; and
 - where the manufacturer's design specifications and the conditions of this works approval have not been met, what measures will the works approval holder take to meet them, and what timeframes will be required to implement those measures.

Records and reporting (general)

10. The works approval holder must record the following information in relation to complaints received by the works approval holder (whether received directly from a

complainant or forwarded to them by the Department or another party) about any alleged emissions from the premises:

- (a) the name and contact details of the complainant, (if provided);
- (b) the time and date of the complaint;
- (c) the complete details of the complaint and any other concerns or other issues raised; and
- (d) the complete details and dates of any action taken by the works approval holder to investigate or respond to any complaint.

11. The works approval holder must maintain accurate and auditable books including the following records, information, reports, and data required by this works approval:

- (a) the works conducted in accordance with condition 1;
- (b) any maintenance of infrastructure that is performed in the course of complying with conditions 1 and 6;
- (c) complaints received under condition 10.

12. The books specified under condition 11 must:

- (a) be legible;
- (b) if amended, be amended in such a way that the original version(s) and any subsequent amendments remain legible and are capable of retrieval;
- (c) be retained by the works approval holder for the duration of the works approval; and
- (d) be available to be produced to an inspector or the CEO as required.

Definitions

In this works approval, the terms in Table 3 have the meanings defined.

Table 3: Definitions

Term	Definition
AS1940:2017	Means the Australian Standard <i>AS 1940:2017 The storage and handling of flammable and combustible liquids</i>
books	has the same meaning given to that term under the EP Act.
CEO	means Chief Executive Officer. CEO for the purposes of notification means: Director General Department administering the <i>Environmental Protection Act 1986</i> Locked Bag 10 Joondalup DC WA 6919 info@dwer.wa.gov.au
Department	means the department established under section 35 of the <i>Public Sector Management Act 1994</i> and designated as responsible for the administration of Part V Division 3 of the EP Act.

Term	Definition
discharge	has the same meaning given to that term under the EP Act.
emission	has the same meaning given to that term under the EP Act.
Environmental Compliance Report	means a report to satisfy the CEO that the conditioned infrastructure and/or equipment has been constructed and/or installed in accordance with the works approval.
EP Act	<i>Environmental Protection Act 1986 (WA).</i>
EP Regulations	<i>Environmental Protection Regulations 1987 (WA).</i>
premises	the premises to which this works approval applies, as specified at the front of this works approval and as shown on the premises map (Figure 1) in Schedule 1 to this works approval.
prescribed premises	has the same meaning given to that term under the EP Act.
ROM	means Run of Mine
time limited operations	refers to the operation of the infrastructure and equipment identified under this works approval that is authorised for that purpose, subject to the relevant conditions.
works approval	refers to this document, which evidences the grant of the works approval by the CEO under section 54 of the EP Act, subject to the conditions.
works approval holder	refers to the occupier of the premises being the person to whom this works approval has been granted, as specified at the front of this works approval.

END OF CONDITIONS

Schedule 1: Maps

The boundary of the prescribed premises is shown in the map below (Figure 1).

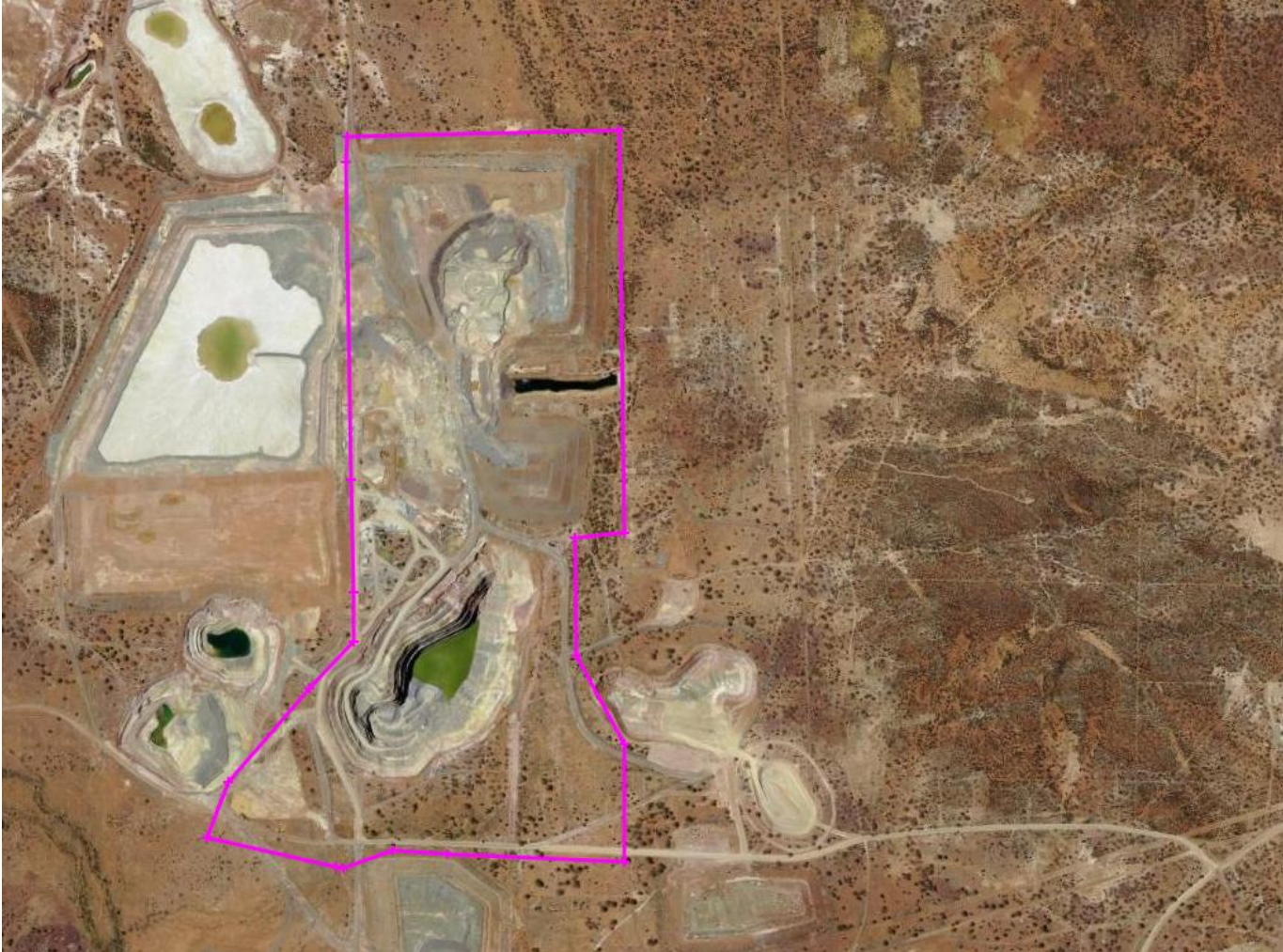


Figure 1: Map of the boundary of the prescribed premises



Figure 2: Rose Pit operation tenement and site layout

Schedule 2: Premises boundary

The corners of the premises boundary are the coordinates listed in Table 4.

Table 4: Premises boundary coordinates (GDA 94 Zone 51)

	Easting	Northing
1.	330255.63	6623078.86
2.	330257.21	6623163.55
3.	331144.08	6623195.80
4.	331179.55	6621892.87
5.	331018.31	6621873.53
6.	331031.20	6621492.98
7.	331189.24	6621209.17
8.	331195.83	6620829.42
9.	330621.62	6620841.51
10.	330441.04	6620851.19
11.	330282.99	6620793.14
12.	330259.80	6620797.85
13.	329837.93	6620883.44
14.	329904.35	6621066.91
15.	330164.96	6621371.94
16.	330304.53	6621527.64
17.	330302.35	6621686.48
18.	330290.07	6622052.60