



Works approval number	W3097/2025/1
Works approval holder	Auswaste Recycling (WA) Pty Ltd
ACN	675 254 083
Registered business address	88 McCullough Street, Sunnybank Qld 4109
DWER file number	INS-0003097
Duration	27/01/2026 to 26/01/2029
Date of issue	27/01/2026
Premises details	Auswaste Paper and Cardboard Recycling Facility 14 Exchange Place, East Rockingham, WA Legal description - Lot 23 on Deposited Plan 424921 Certificate of Title Volume 4036 Folio 986 As defined by the coordinates in Schedule 2

Prescribed premises category description (Schedule 1, <i>Environmental Protection Regulations 1987</i>)	Assessed design capacity
Category 30: Pulp, paper or paperboard manufacturing	168,000 tonnes per annum
Category 61A Solid waste facility	80,000 tonnes per annum

This works approval is granted to the works approval holder, subject to the attached conditions, on 27 January 2026, by:

A/SENIOR MANAGER, HEAVY INDUSTRIES

an officer delegated under section 20 of the *Environmental Protection Act 1986* (WA)

Works approval history

Date	Reference number	Summary of changes
27/01/2026	W3097/2025/1	Works approval granted.

Interpretation

In this works approval:

- (a) the words 'including', 'includes' and 'include' in conditions mean "including but not limited to", and similar, as appropriate;
- (b) where any word or phrase is given a defined meaning, any other part of speech or other grammatical form of that word or phrase has a corresponding meaning;
- (c) where tables are used in a condition, each row in a table constitutes a separate condition;
- (d) any reference to an Australian or other standard, guideline, or code of practice in this works approval:
 - (i) if dated, refers to that particular version; and
 - (ii) if not dated, refers to the latest version and therefore may be subject to change over time;
- (e) unless specified otherwise, any reference to a section of an Act refers to that section of the EP Act; and
- (f) unless specified otherwise, all definitions are in accordance with the EP Act.

NOTE: This works approval requires specific conditions to be met but does not provide any implied authorisation for other emissions, discharges, or activities not specified in this works approval.

Works approval conditions

The works approval holder must ensure that the following conditions are complied with:

Construction phase

Infrastructure and equipment

1. The works approval holder must:
 - (a) construct and/or install the infrastructure and/or equipment;
 - (b) in accordance with the corresponding design and construction / installation requirements; and
 - (c) at the corresponding infrastructure location, as set out in Table 1.

Table 1: Design and construction / installation requirements

	Infrastructure	Design and construction / installation requirements	Infrastructure Location
1.	Primary processing shed	(a) To be designed and constructed as a fully enclosed building (external walls and roof); (b) Installed with rapid closing/fast action doors; and (c) Constructed on a concrete hardstand.	'Primary processing shed' as depicted in Figure 2 of Schedule 1
2.	Sorting line	Installed on a concrete hardstand, inside the enclosed primary processing shed.	'Sorting line' as depicted in Figure 2 of Schedule 1
3.	Dry pulping line	(a) Installed on a concrete hardstand, inside the enclosed primary processing shed; (b) Dry pulp process lines must be installed with covers and/or ducting preventing dust escape; (c) Single shaft shredder installed with; <ol style="list-style-type: none"> i. In-built misting function; and ii. Pulse dust collector at outlet with dust abatement performance at 99% efficiency; and (d) Hammer mill installed with; <ol style="list-style-type: none"> i. In-built misting function; ii. Cyclone dust collector at outlet with dust abatement performance at 99% efficiency; and iii. Pipeline for collected dust reinput into production process stream. 	'Dry pulping line' as depicted in Figure 2 of Schedule 1
4.	Waste baler	Constructed on a concrete hardstand, inside the enclosed primary processing shed.	'Waste baler' as depicted in Figure 2 of Schedule 1
5.	Feedstock and residual waste storage areas	Constructed on a concrete hardstand, inside the enclosed primary processing shed..	as depicted in Figure 2 of Schedule 1

	Infrastructure	Design and construction / installation requirements	Infrastructure Location
6.	Drainage Infrastructure	(a) Installed with full drainage coverage of premises excluding primary processing shed; (b) Installed with forty-eight 1.8 metre pre-cast soak wells at the locations outlined within Figure 3; and (c) Drains installed in loading dock must possess grates.	As depicted in Figure 3 of Schedule 1.
7.	Firefighting infrastructure	(a) Premises be designed and constructed to meet the requirements of DFES Guidance Note: <i>GN04 Fire Prevention and Management in a Recycling Facility</i> ; (b) Appropriate fire-fighting equipment and infrastructure established in accordance with the Fire Prevention and Management Plan, including external hydrants, dual perimeter access, sprinkler systems; (c) Bunding, drains or other infrastructure capable of retaining all fire-fighting waters and debris on the premises.	N/A

Compliance reporting

2. The works approval holder must within 60 calendar days of an item of infrastructure or equipment required by condition 1 being constructed and/or installed:
 - (a) undertake an audit of their compliance with the requirements of condition 1; and
 - (b) prepare and submit to the CEO an Environmental Compliance Report on that compliance.
3. The Environmental Compliance Report required by condition 2, must include as a minimum the following:
 - (a) certification by a suitably qualified engineer that the items of infrastructure or component(s) thereof, as specified in condition 1, have been constructed in accordance with the relevant requirements specified in condition 1;
 - (b) as constructed plans and a detailed site plan for each item of infrastructure or component of infrastructure specified in condition 1; and
 - (c) be signed by a person authorised to represent the works approval holder and contains the printed name and position of that person.
4. The works approval holder must, at least 60 days prior to the commencement of time limited operations, prepare and submit to the CEO a Fire Prevention and Management Plan, prepared by a suitably qualified fire management consultant that is consistent with Australian Standard AS 3745.
5. The works approval holder must ensure that Fire Prevention and Management Plan required by condition 4 includes as a minimum:
 - (a) detail on how fires will be prevented, detected, responded to, suppressed, contained and controlled for all approved activities and addressing all waste types and stages of the waste handling, sorting and storage quantities and processes;
 - (b) in the event of a fire occurring within the approved activities, how impacts to the environment and human health will be mitigated, including detail on the management of firewater to prevent its release to the environment;

- (c) how staff will be trained in fire and emergency response on an ongoing, annual basis;
- (d) the firefighting equipment and fire response capabilities and responsibilities;
- (e) premises maps depicting:
 - (i) fire hose reels, hydrants, sprinklers and isolation points;
 - (ii) electrical isolation points;
 - (iii) drainage;
 - (iv) system shutdown points; and
 - (v) fire response crew entry points.

Time limited operations phase

Commencement and duration

6. The works approval holder may only commence time limited operations for an item of infrastructure identified in condition 1 once the:
 - (a) Environmental Compliance Report as required by condition 2 has been submitted by the works approval holder for that item of infrastructure; and
 - (b) the CEO has notified the works approval holder that the Fire Prevention and Management Plan, required by condition 4 meets the requirements of condition 5.
7. The works approval holder may conduct time limited operations for an item of infrastructure specified in condition 8 (as applicable):
 - (a) for a period not exceeding 180 calendar days from the day the works approval holder meets the requirements of condition 8 for that item of infrastructure; or
 - (b) until such time as a licence for that item of infrastructure is granted in accordance with Part V of the *Environmental Protection Act 1986*, if one is granted before the end of the period specified in condition 7(a).

Time limited operations requirements

8. During time limited operations, the works approval holder must ensure that the premises infrastructure and equipment listed in Table 2 and located at the corresponding infrastructure location is maintained and operated in accordance with the corresponding operational requirement set out in Table 2.

Table 2: Infrastructure and equipment requirements during time limited operations

	Site infrastructure and equipment	Operational requirement
1.	General Facility	(a) Facility may only operate from 0700 to 2200 hours Monday to Saturday excluding public holidays; (b) Facility feedstock (wastepaper and cardboard) and product must be stored inside the primary processing shed within the storage areas outlined in Figure 2.
2.	Primary processing shed	(a) Rapid closing/fast action doors must be in good working order and utilised to ensure open access to the primary processing shed is minimised; (b) The works approval holder must take reasonable precautions to ensure visible dust does not escape processing shed; and (c) Any windblown waste outside of the primary processing shed must be collected at least weekly.

	Site infrastructure and equipment	Operational requirement
3.	Process line	<p>(a) Dust collectors must be in operation at all times during the processing of feedstock and manufacturing of paper fibre;</p> <p>(b) Dust collectors and dust enclosures on processing infrastructure and conveyors must be maintained and operated in accordance with manufacturer specifications to ensure effective dust collection;</p> <p>(c) Weekly maintenance checks of dust management equipment must occur; and</p> <p>(d) Should maintenance checks indicate dust abatement equipment is not working effectively, the process line must cease operations until required repairs or maintenance are complete.</p>
4.	Waste baler and storage	<p>(a) Incidental non-conforming waste removed from the sorting process must be stored at the areas indicated within Figure 2;</p> <p>(b) Waste must be stored within mobile garbage bins or as bales; and</p> <p>(c) Waste must be removed and disposed of offsite at a suitably licenced premises at least weekly.</p>
5.	Fire management, prevention equipment and containment of firewater	<p>(a) Ensure all on site fire management and prevention equipment are subject to regular and ongoing maintenance, in accordance with AS 1851;</p> <p>(b) Fire management and response is conducted in accordance with the Fire Prevention and Management Plan;</p> <p>(c) Ensure that all potentially contaminated firewater runoff is contained within the premises; and</p> <p>(d) Contingency arrangements must exist for the removal of firewater, in excess of the containment capacity, by a carrier licensed under the <i>Environmental Protection (Controlled Waste) Regulations 2004</i> within 72 hours of the extinguishment of a fire at the premises, to ensure firewater does not discharge to the environment.</p>

Waste acceptance and handling

9. During time limited operations, the works approval holder must only accept onto the premises waste of a type that:
- does not exceed the rate at which that waste is received; and
 - meets the relevant acceptance specification,
- as set out in Table 3.

Table 3: Waste acceptance criteria

Waste type	Rate at which waste is received	Acceptance specification
Putrescible waste (process feedstock – paper and cardboard)	80,000 tonnes annually	<p>(a) Commercial and industrial cardboard and paper, as well as bales of clean cardboard produced by MRFs only; and</p> <p>(b) must pass a visual contamination inspection to ensure that minimal residual and/or non-conforming wastes are present.</p>

10. Where waste does not meet the waste acceptance criteria set out in condition 9, the works approval holder must:
 - (a) reject the waste;
 - (b) record the details of the:
 - (i) waste (type and description);
 - (ii) source of the waste load;
 - (iii) name of the waste carrier;
 - (iv) registration number of the delivery vehicle; and
 - (v) date that the waste load was rejected; and
 - (c) maintain accurate and auditable records of all waste loads rejected from the premises.

Emissions and discharges

11. The works approval holder must ensure that no waste is burnt on the premises.
12. The works approval holder must immediately notify the CEO of:
 - (a) any fire on the premises; and/or
 - (b) any accident, malfunction, or emergency which results or could result in the discharge of fire-fighting wash water or other wastes from the premises.
13. The works approval holder must take all reasonable and practicable measures to prevent stormwater run-off becoming contaminated by the activities and operations undertaken at the premises.

Monitoring

14. During time limited operations, the works approval holder must record the total amount of waste accepted onto and removed from the premises, in accordance with the requirements specified in Table 4.

Table 4: Waste inputs and outputs at the premises

Waste type	Unit	Time period	Frequency
Paper and cardboard	m ³ or tonnes	During time limited operations	Each load arriving at the premises
Feedstock			Each load leaving or rejected from the premises
Inert Type 2 (plastic)			
Scrap Metal			
Glass			
Non-conforming residual waste			

Compliance reporting

15. The works approval holder must submit to the CEO a report on the time limited operations within 30 calendar days of the completion date of time limited operations or 30 calendar days before the expiration date of the works approval, whichever is the sooner.
16. The works approval holder must ensure the report required by condition 15 includes the following:

- (a) a summary of the time limited operations, including timeframes, quantities and types of waste produced, and amount of material processed;
- (b) a review of performance and compliance against the conditions of the works approval and the Environmental Commissioning Report; and
- (c) where the manufacturer's design specifications and the conditions of this works approval have not been met, what measures will the works approval holder take to meet them, and what timeframes will be required to implement those measures.

Records and reporting (general)

- 17.** The works approval holder must record the following information in relation to complaints received by the works approval holder (whether received directly from a complainant or forwarded to them by the Department or another party) about any alleged emissions from the premises:
- (a) the name and contact details of the complainant, (if provided);
 - (b) the time and date of the complaint;
 - (c) the complete details of the complaint and any other concerns or other issues raised; and
 - (d) the complete details and dates of any action taken by the works approval holder to investigate or respond to any complaint.
- 18.** The works approval holder must maintain accurate and auditable books including the following records, information, reports, and data required by this works approval:
- (a) the works conducted in accordance with condition 1;
 - (b) any maintenance of infrastructure that is performed in the course of complying with condition 8;
 - (c) monitoring programmes undertaken in accordance with condition 14; and
 - (d) complaints received under condition 17.
- 19.** The books specified under condition 18 must:
- (a) be legible;
 - (b) if amended, be amended in such a way that the original version(s) and any subsequent amendments remain legible and are capable of retrieval;
 - (c) be retained by the works approval holder for the duration of the works approval; and
 - (d) be available to be produced to an inspector or the CEO as required.

Definitions

In this works approval, the terms in Table 5 have the meanings defined.

Table 5: Definitions

Term	Definition
annual period	a 12 month period commencing from 1 July until 30 June of the immediately following year.
AS 1851	means Australian Standard AS 1851.2012 <i>Routine service of fire protection systems and equipment</i> .
AS 3745	means Australian Standard AS 3745 <i>Planning for emergencies in facilities</i> .
books	has the same meaning given to that term under the EP Act.
CEO	means Chief Executive Officer. CEO for the purposes of notification means: Director General Department administering the <i>Environmental Protection Act 1986</i> Locked Bag 10 Joondalup DC WA 6919 info@dwer.wa.gov.au
Department	means the department established under section 35 of the <i>Public Sector Management Act 1994</i> and designated as responsible for the administration of Part V Division 3 of the EP Act.
discharge	has the same meaning given to that term under the EP Act.
emission	has the same meaning given to that term under the EP Act.
Environmental Compliance Report	means a report to satisfy the CEO that the conditioned infrastructure and/or equipment has been constructed and/or installed in accordance with the works approval.
EP Act	<i>Environmental Protection Act 1986</i> (WA).
EP Regulations	<i>Environmental Protection Regulations 1987</i> (WA).
fire management consultant	means an accredited person who: (a) has a minimum of five years of experience working in a supervisory area of fire control system design, installation and commissioning; and (b) is employed by an independent third party external to the works approval holder's business; or is otherwise approved in writing by the CEO to act in this capacity.
Inert Waste Type 2	as defined in the Landfill Definitions.

Term	Definition
Landfill Definitions	Landfill Waste Classification and Waste Definitions 1996 (as amended from time to time).
MRF	meaning Material Recovery Facility
premises	the premises to which this licence applies, as specified at the front of this licence and as shown on the premises map (Figure 1) in Schedule 1 to this works approval.
prescribed premises	has the same meaning given to that term under the EP Act.
process feedstock	Meaning post-consumer paper and cardboard collected from shopping centres, commercial premises, offices, and homes.
residual waste	Meaning sorted waste that is not plastic, metal or glass.
suitably qualified engineer	means a person who: (a) holds a Bachelor of Engineering degree recognised by the Institute of Engineers; and (b) has a minimum of five years of experience working in the field of engineering; or is otherwise approved in writing by the CEO to act in this capacity.
time limited operations	refers to the operation of the infrastructure and equipment identified under this works approval that is authorised for that purpose, subject to the relevant conditions.
waste	has the same meaning given to that term under the EP Act.
works approval	refers to this document, which evidences the grant of the works approval by the CEO under section 54 of the EP Act, subject to the conditions.
works approval holder	refers to the occupier of the premises being the person to whom this works approval has been granted, as specified at the front of this works approval.

END OF CONDITIONS

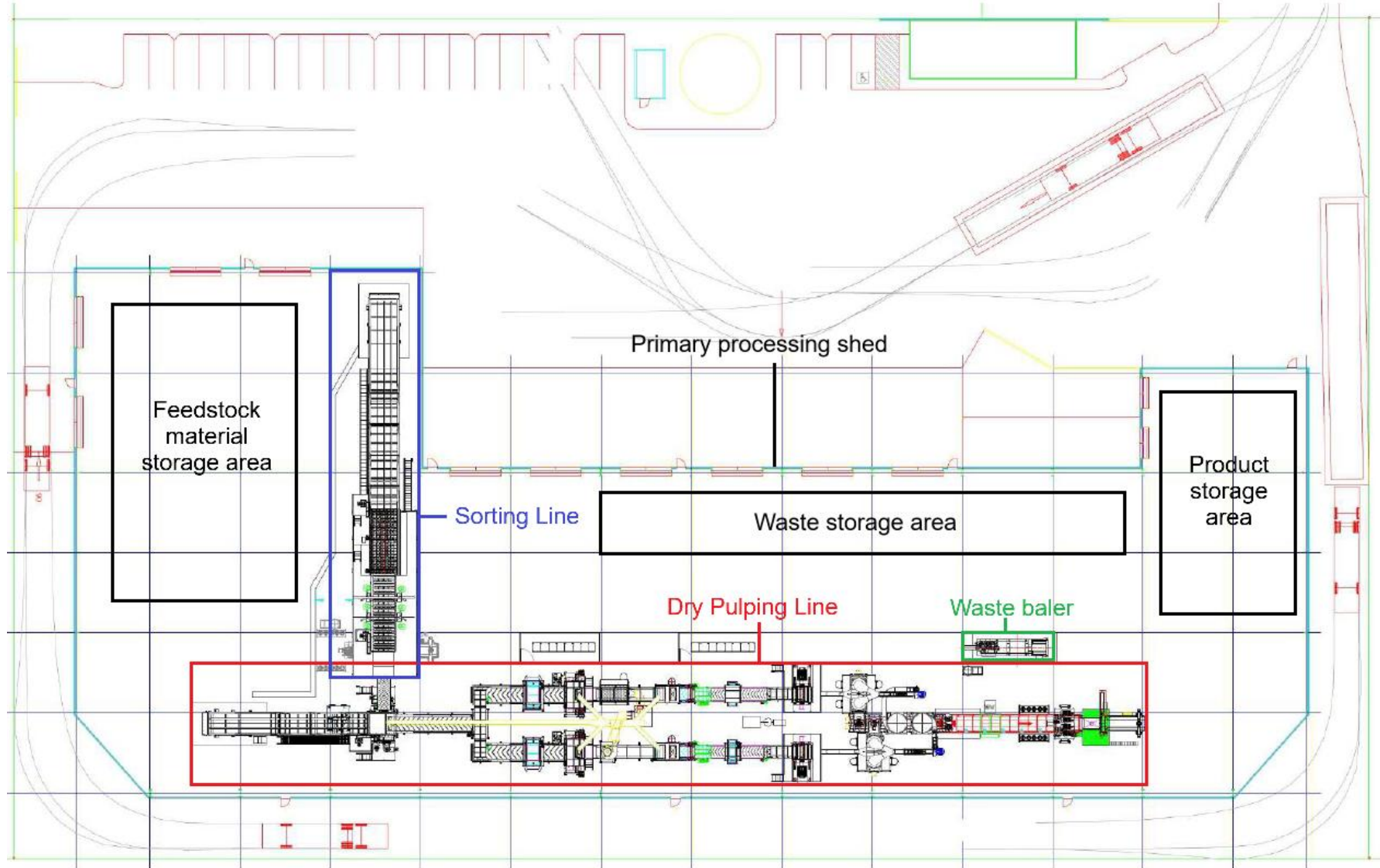


Figure 2: Map of premise equipment layout

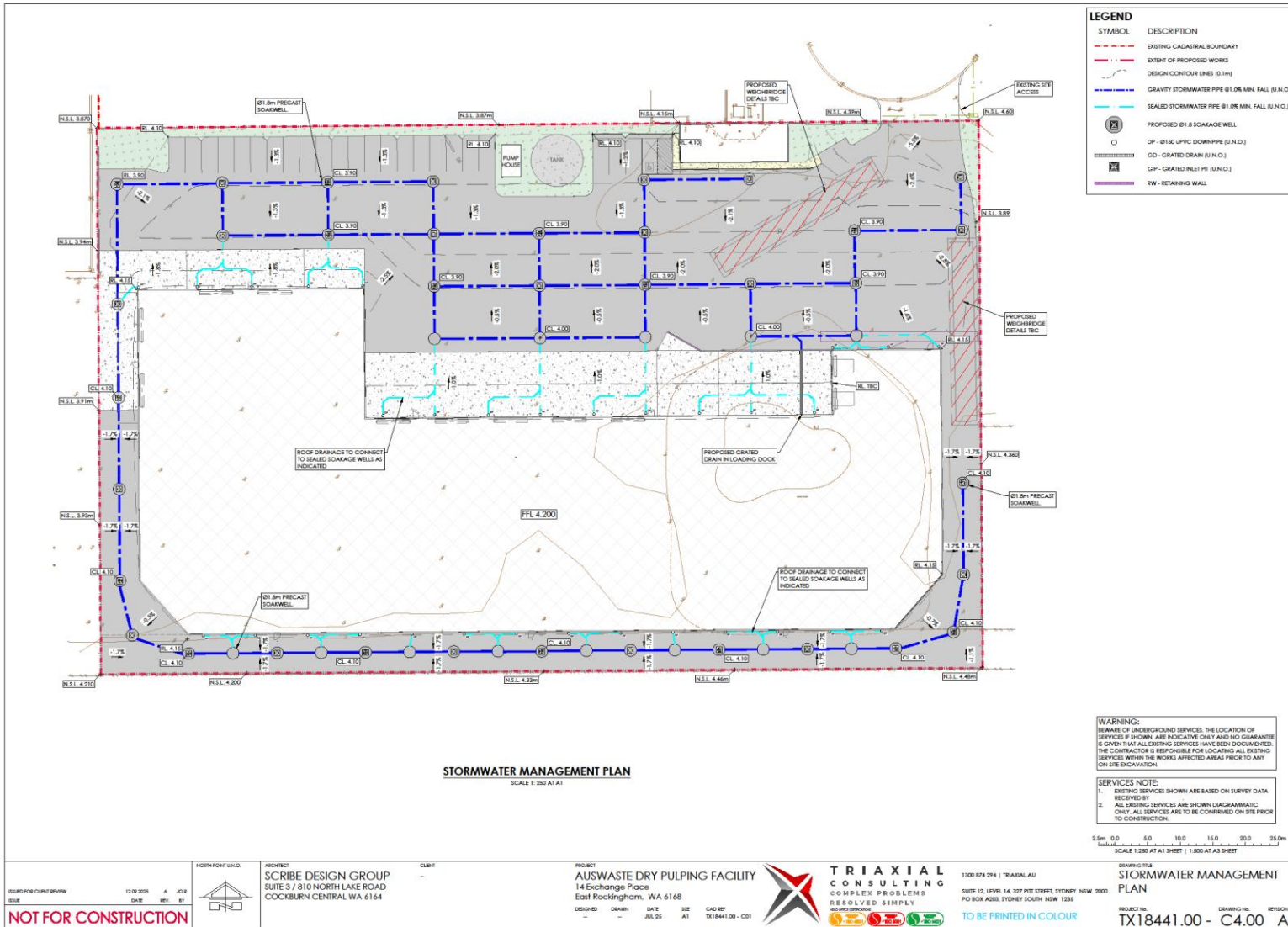


Figure 3: Applicant provided stormwater infrastructure outline

Schedule 2: Premises boundary

The corners of the premises boundary are the coordinates listed in Table 6.

Table 6: Premises boundary coordinates (GDA2020)

	Easting	Northing	Zone
1.	384616.17869	6428661.41296	50
2.	384751.32784	6428662.52489	50
3.	384616.78658	6428577.63677	50
4.	384751.92812	6428578.62764	50