



# Works Approval

<b>Works approval number</b>	W3044/2025/1
<b>Works approval holder</b>	Yindjibarndi Energy Corporation Pty Ltd
<b>ACN</b>	667 821 865
<b>Registered business address</b>	Suite 2, Level 13, 1 Spring Street PERTH WA 6000
<b>DWER file number</b>	APP0029166
<b>Duration</b>	13/01/2026 to 12/01/2029
<b>Date of issue</b>	13/01/2026
<b>Premises details</b>	Jinbi Solar Facility  Legal description - Unallocated Crown Land PIN 1017635 and 1017648 TOM PRICE WA 6751  As defined by the premises maps attached to the issued works approval

<b>Prescribed premises category description (Schedule 1, <i>Environmental Protection Regulations 1987</i>)</b>	<b>Assessed production / design capacity</b>
Category 85: Sewage Facility	68 m <sup>3</sup> per day

This works approval is granted to the works approval holder, subject to the attached conditions, on 13 January 2026, by:

**Alana Kidd**

**Manager, Green Energy**

an officer delegated under section 20 of the *Environmental Protection Act 1986* (WA)

## Works approval history

Date	Reference number	EO number	Summary of changes
13/01/2026	W3044/2025/1	APP-0029166	Works approval granted.

## Interpretation

In this works approval:

- (a) the words ‘including’, ‘includes’ and ‘include’ in conditions mean “including but not limited to”, and similar, as appropriate;
- (b) where any word or phrase is given a defined meaning, any other part of speech or other grammatical form of that word or phrase has a corresponding meaning;
- (c) where tables are used in a condition, each row in a table constitutes a separate condition;
- (d) any reference to an Australian or other standard, guideline, or code of practice in this works approval:
  - (i) if dated, refers to that particular version; and
  - (ii) if not dated, refers to the latest version and therefore may be subject to change over time;
- (e) unless specified otherwise, any reference to a section of an Act refers to that section of the EP Act; and
- (f) unless specified otherwise, all definitions are in accordance with the EP Act.

**NOTE:** This works approval requires specific conditions to be met but does not provide any implied authorisation for other emissions, discharges, or activities not specified in this works approval.

# Works approval conditions

The works approval holder must ensure that the following conditions are complied with:

## Construction phase

### Infrastructure and equipment

1. The works approval holder must:
  - (a) construct and/or install the infrastructure and/or equipment;
  - (b) in accordance with the corresponding design and construction / installation requirements; and
  - (c) at the corresponding infrastructure location, as set out in Table 1

**Table 1: Design and construction / installation requirements**

	Infrastructure	Design and construction / installation requirements	Infrastructure location
1	WWTP including: 4 x 50,000L Primary Settlement and Balance Tanks 2 x 55,000L Aerobic Reactor 1 x 50,000L Chlorine Contact tank. 1 x 50,000L Emergency Storage tank Pumps and pipes Flow meter Plant room Sludge tanks Sample tap	<u>WWTP must be installed with the following:</u> (a) Skid mounted fixed film sewage treatment reactor, including: <ol style="list-style-type: none"> <li>i. 4 x 50,000L Primary Settlement and Balance Tanks;</li> <li>ii. 2 x 55,000L Aerobic Reactor;</li> <li>iii. 1 x 50,000L Chlorine Contact tank;</li> <li>iv. 1 x 50,000L Emergency Storage tank, and</li> <li>v. Be separated from any ephemeral creekline by at least 250m.</li> </ol> (b) WWTP tanks must all be enclosed and installed on compacted ground within an earthen bund. (c) Must be constructed in a manner that minimises fugitive dust with dust control where deemed necessary. (d) All tanks must have adequate bunding and storage in accordance with relevant Australian Standards. (e) WWTP must have a containerised, insulated and air-conditioned plant room with: <ol style="list-style-type: none"> <li>i. Duty standby influent feed pumps</li> <li>ii. Duty standby effluent pumps</li> <li>iii. Duty standby air blowers</li> <li>iv. Precipitant dosing pump</li> <li>v. Influent and effluent flowmeters</li> <li>vi. AS3000 compliant control panel</li> </ol>	Refer to Schedule 1 Figure 1 and Figure 2

	Infrastructure	Design and construction / installation requirements	Infrastructure location
		<p>(f) WWTP must be installed and capable of treating sewage to a minimum effluent quality performance criterion prior to discharge of:</p> <ul style="list-style-type: none"> <li>i. Suspended solids &lt;30mg/L</li> <li>ii. Total Suspended Solids (TSS) &lt;30mg/l</li> <li>iii. Biochemical Oxygen Demand (BODs) &lt;20mg/L</li> <li>iv. Total nitrogen &lt;50mg/L</li> <li>v. Phosphorus &lt;12mg/L</li> <li>vi. Residual chlorine 0.2-2.0mg/L</li> <li>vii. Coliforms &lt;1,000cfu/100mL</li> </ul> <p>(g) A volumetric flow meter must be installed on the WWTP influent and discharge pipe outlets to monitor ingoing, and outgoing volume to the irrigation area.</p> <p>(h) WWTP must install a contingency storage capacity of 2.7 days in the event discharge is suspended during high rainfall.</p> <p>(i) An alarm system must be installed capable of notifying the operator of:</p> <ul style="list-style-type: none"> <li>i. High and high-high tank levels.</li> <li>ii. Process interlock failure; and</li> <li>iii. Pump failure to start alarm</li> </ul> <p>(j) A dedicated bunded chemical storage area for chemical containers must be installed.</p> <p>(k) A sample tap must be fitted on the outlet of the chlorine tank to the irrigation outlet.</p>	
2	3.7 ha irrigation spray field consisting of bunding, pipelines, and sprinklers	<p><u>Irrigation Spray field</u></p> <ul style="list-style-type: none"> <li>(a) Must be a minimum size of 3.7 hectares.</li> <li>(b) Irrigation layout must have a minimum of 0.6 m between the surface level and maximum groundwater level (top of rock).</li> <li>(c) Must be located a minimum of 66 m from the camp.</li> <li>(d) Irrigation area must be bunded and designed so no runoff or spray drift beyond the irrigation boundary will occur.</li> <li>(e) Must be fenced to prevent any unauthorised access with safety signage.</li> <li>(f) Treated wastewater must be applied to the irrigation spray field with above ground nozzle impulse sprinklers.</li> <li>(g) Treated wastewater must be installed to</li> </ul>	Refer to Schedule 1 Figures 1, 2 and 3

	Infrastructure	Design and construction / installation requirements	Infrastructure location
		<p>deliver even coverage over the 3.7 ha irrigation spray field.</p> <p>(h) Pipeline from WWTP to the irrigation area must be marked.</p> <p>(i) Pipeline from the WWTP to the irrigation area must be installed above ground and buried when crossing access tracks.</p>	
3	Sludge storage	<p><u>Sludge tank/ storage</u></p> <p>(a) Sludge tanks must be installed in covered bunded tank(s).</p>	Refer to Schedule 1 Figures 1, and 2

### Compliance reporting

2. The works approval holder must within 30 days of the items of infrastructure or equipment required by condition 1 being constructed and/or installed:
  - (a) undertake an audit of their compliance with the requirements of condition 1; and
  - (b) prepare and submit to the CEO an Environmental Compliance Report on that compliance.
3. The Environmental Compliance Report required by condition 2, must include as a minimum the following:
  - (a) certification by a qualified, competent civil or structural engineer that the items of infrastructure or component(s) thereof, as specified in condition 1, have been constructed in accordance with the relevant requirements specified in condition 1;
  - (b) as constructed plans and a detailed site plan for each item of infrastructure or component of infrastructure specified in condition 1; and
  - (c) be signed by a person authorised to represent the works approval holder and contains the printed name and position of that person.

### Environmental commissioning phase

#### Environmental commissioning requirements

4. The works approval holder may only commence environmental commissioning of an item of infrastructure listed in Table 2 once the Environmental Compliance Report has been submitted for that item of infrastructure in accordance with condition 2 of this works approval.
5. Any environmental commissioning activities undertaken for an item of infrastructure specified in Table 2 may only be carried out:
  - (a) in accordance with the corresponding commissioning requirements; and
  - (b) for the corresponding authorised commissioning duration.

**Table 2: Environmental commissioning requirements**

	Infrastructure	Commissioning requirements	Authorised commissioning duration	Infrastructure location
1	WWTP including: 4 x 50,000L Primary Settlement and Balance Tanks 2 x 55,000L Aerobic Reactor 1 x 50,000L Chlorine Contact tank. 1 x 50,000L Emergency Storage tank Pumps and pipes Flow meter Plant room Sludge tanks Sample tap	(a) Pipeline from WWTP to irrigation area must be checked weekly for leaks and immediately shut down if a leak is detected, until fixed. (b) All WWTP infrastructure must be inspected daily for leaks, ruptures, or overtopping, and any issues must be repaired immediately. (c) Volumetric flow meters must be maintained on each WWTP outlet to the irrigation spray fields. (d) Sample tap must be maintained and capable of taking representative irrigation water quality samples of treated wastewater. (e) Alarm systems on tanks and pumps must be maintained in operating condition. (f) All chemical and hydrocarbons must be stored within the dedicated chemical bunded storage area.	<u>Environmental commissioning</u> for a period not exceeding 90 calendar days.	As depicted in Schedule 1, Figure 1 and Figure 2
2	3.7 ha irrigation spray field consisting of bunding, pipelines, and sprinklers	(a) No more than 68 m <sup>3</sup> per day of treated wastewater can be applied across the irrigation spray field. (b) Irrigation rate must be managed to prevent ponding, pooling and surface runoff of effluent on the irrigation spray field surface. (c) Spray drift must not occur beyond the fenced irrigation spray field area. (d) Irrigation spray field sprinklers must be maintained to deliver an even coverage of irrigation wastewater. (e) No irrigation must occur		As depicted in Schedule 1, Figure 1 and Figure 3

		<p>prior to, or during heavy rainfall and cyclone events.</p> <p>(f) Monthly photographs of vegetation in the spray field from the fixed location identified in Condition 13 e) must be taken with a comparison to all previous images to identify any impacts on vegetation and soil.</p>		
--	--	--	--	--

6. During environmental commissioning, the works approval holder must ensure that the emission(s) specified in Table 3 are discharged only from the corresponding discharge point(s) and only at the corresponding discharge point location(s).

**Table 3: Authorised discharge point during commissioning**

Emission	Discharge point	Discharge point location
Treated effluent from final treatment tank prior to discharge	Irrigation spray field	As shown in Schedule 1, Figure 1 and Figure 3

7. During environmental commissioning, the works approval holder must monitor the parameters from the discharge point in Table 4 against the targets specified in Table 4.

**Table 4: Emission and discharge monitoring targets during environmental commissioning**

Discharge point	Parameter	Target
Treated effluent from final treatment tank discharged to spray irrigation area As shown in Schedule 1 Figure 1 and Figure 3	Suspended solids	<30 mg/L
	Biochemical Oxygen Demand (BOD)	<20 mg/L
	Total nitrogen	<50 mg/L
	Phosphorus	12 mg/L
	Residual chlorine	0.2-2.0 mg/L
	Coliforms	<1,000 cfu/100mL

### Monitoring during environmental commissioning

8. The works approval holder must monitor emissions during environmental commissioning in accordance with Table 5.

**Table 5: Emission and discharge monitoring during environmental commissioning**

Discharge point	Monitoring location	Parameter	Frequency	Averaging Period	Unit	Method
Final treatment tank flow meter leading to Irrigation spray field	Outlet meter to sprayfield	Volume discharged to irrigation spray field	Continuous	Cumulative daily	M <sup>3</sup> /day	Flow meter device
	Final treatment tank	Biochemical oxygen demand (BOD)	monthly <sup>2</sup>	Spot sample	mg/L	AS/NZS 5667.1

As depicted in Schedule 1, Figure 1 and Figure 3	sampling tap at WWTP	Suspended solids			mg/L	
		Total Nitrogen			mg/L	
		Total Phosphorus			mg/L	
		Coliforms			Cfu/100 mL	
		Residual free chlorine			mg/L	
		Continuous	N/A			

Note 1: In-field non-NATA accredited analysis permitted where laboratory NATA holding times cannot be realistically met.

Note 2: Subsequent sampling may be required to ensure the WWTP can treat wastewater to the required discharge limits in Table 8.

9. The works approval holder must ensure that all monitoring equipment used to comply with condition 8 is calibrated in accordance with the manufacturer’s specifications.
10. The works approval holder must ensure that all non-continuous sampling and analysis undertaken pursuant to condition 8 is undertaken by a holder of a current accreditation from NATA for the methods of sampling and analysis relevant to the corresponding relevant parameter.
11. The works approval holder must record all monitoring activity required by condition 8.

**Compliance Reporting**

12. The works approval holder must submit to the CEO an Environmental Commissioning Report within 30 calendar days of the completion date of environmental commissioning for infrastructure specified in Table 2.
13. The works approval holder must ensure the Environmental Commissioning Report required by condition 12 of this works approval includes the following:
  - (a) a summary of the environmental commissioning activities undertaken, including date(s) for commencement of commissioning, timeframes and amount of wastewater processed;
  - (b) a summary of treated wastewater monitoring results recorded in accordance with condition 8;
  - (c) copies of laboratory reports for the monitoring results recorded in accordance with condition 10;
  - (d) a summary of the environmental performance of each item of infrastructure or equipment as installed, which at a minimum includes:
    - (i) a comparison of the treated wastewater monitoring results against discharge targets specified in Table 4 and limits in Table 8;
    - (ii) an assessment of the irrigation spray field performance against the operational requirements in condition 5 of this works approval;
  - (e) photographs of the irrigation spray field from a recorded fixed location to illustrate the condition of vegetation prior to irrigation commencing; and
  - (f) where they have not been met, measures proposed to meet the manufacturer’s design specifications and the conditions of this works approval, together with timeframes for implementing the proposed measures.

## Time limited operations

### Commencement and duration

- 14.** The works approval holder may only commence time limited operations for an item of infrastructure identified in condition 16:
- (a) where the item of infrastructure is not authorised to undertake environmental commissioning, the Environmental Compliance Report as required by condition 2 has been submitted to the CEO by the works approval holder for that item of infrastructure; and
  - (b) where the item of infrastructure is authorised to undertake environmental commissioning under condition 5, the Environmental Commissioning Report for that item of infrastructure as required by condition 12 has been submitted to the CEO by the works approval holder.
- 15.** The works approval holder may conduct time limited operations for an item of infrastructure:
- (a) for a period not exceeding **180 calendar days** from the day the works approval holder meets the requirements of condition 14 for those items of infrastructure; or
  - (b) until such time as a Registration or licence for that item of infrastructure is granted in accordance with Part V of the *Environmental Protection Act 1986*, if one is granted before the end of the period specified in condition 15(a).

### Time limited operations requirements and emission limits

- 16.** During time limited operations, the works approval holder must ensure that the infrastructure and equipment listed in Table 1 and located at the corresponding infrastructure location is maintained and operated in accordance with conditions of this works approval.
- 17.** During time limited operations, the works approval holder must ensure that the emission specified in Table 7 is discharged only from the corresponding discharge point location.

**Table 7: Authorised discharge point**

Emission	Discharge point location
Treated effluent	Spray irrigation area as shown in Schedule 1 Figure 1 and Figure 3

- 18.** During time limited operations, the works approval holder must ensure that the emissions from the discharge point listed in Table 8 do not exceed the corresponding parameter limit(s) when monitored in accordance with condition 19.

**Table 8: Emission and discharge limits during time limited operations**

	Discharge point	Parameter	Limit
1	Irrigation spray field	Suspended solids	30mg/L
		Biochemical Oxygen Demand (BODs)	20mg/L
		Total Nitrogen	50mg/L
		Phosphorus	12mg/L
		Residual chlorine	0.2-2.0mg/L
		Coliforms	1,000cfu/100mL

### Monitoring during time limited operations

19. The works approval holder must monitor emissions during time-limited operations in accordance with Table 9.

**Table 9: Emissions and discharge monitoring during time limited operation**

Discharge point	Monitoring location	Parameter	Frequency	Averaging Period	Unit	Method
Irrigation Spray Field	Flow meter at WWTP	Volume discharged to irrigation spray field	Continuous	Cumulative daily	kL/day	Flow meter device
	Final treatment tank sampling tap at WWTP	Biochemical oxygen demand (BOD)	Weekly	Spot sample	mg/L	AS/NZS 5667.1
		Suspended Solids (SS)			mg/L	
		Total Nitrogen			mg/L	
		Total Phosphorus			mg/L	
		Coliforms			Cfu/100 mL	
Residual free chlorine	Continuous	N/A	mg/L			

### Compliance reporting

20. The works approval holder must submit to the CEO a report on the time limited operations within 30 calendar days of the completion date of time limited operations or 30 calendar days before the expiration date of the works approval, whichever is the sooner.
21. The works approval holder must ensure the report required by condition 20 includes the following:
- a summary of the time limited operations, including dates(s) for commencement of time limited operations, timeframes and amount of wastewater processed;

- (b) a summary of monitoring results for the WWTP recorded during time limited operations in accordance with condition 19, including a comparison against the discharge limits specified in condition 18, along with details of any changes required to achieve those limits;
- (c) copies of laboratory reports for the monitoring results recorded in accordance with condition 19;
- (d) a summary of the environmental performance of all infrastructure as constructed or installed;
- (e) a review of performance and compliance against the conditions of the works approval;
- (f) photographs from the locations identified in condition 13(e) detailing the condition of vegetation in the irrigation spray field comparing pre and during time limited operations irrigation; and
- (g) where the manufacturer's design specifications and the conditions of this works approval have not been met, what measures will the works approval holder take to meet them, and what timeframes will be required to implement those measures.

## Records and reporting (general)

- 22.** The licence holder must, within 7 days of becoming aware of any non-compliance with conditions 1, 5, 16 and 18 of this works approval, notify the CEO in writing of that non-compliance and include in that notification the following information:
- (a) which condition was not complied with;
  - (b) the time and date when the non-compliance occurred;
  - (c) if any environmental impact occurred as a result of the non-compliance and if so what that impact is and where the impact occurred;
  - (d) the details and result of any investigation undertaken into the cause of the non-compliance;
  - (e) what action has been taken and the date on which it was taken to prevent the non-compliance occurring again; and
  - (f) what action will be taken and the date by which it will be taken to prevent the non-compliance occurring again.
- 23.** The works approval holder must record the following information in relation to complaints received by the works approval holder (whether received directly from a complainant or forwarded to them by the Department or another party) about any alleged emissions from the premises:
- (a) the name and contact details of the complainant, (if provided);
  - (b) the time and date of the complaint;
  - (c) the complete details of the complaint and any other concerns or other issues raised; and
  - (d) the complete details and dates of any action taken by the works approval holder to investigate or respond to any complaint.
- 24.** The works approval holder must maintain accurate and auditable books including the following records, information, reports, and data required by this works approval:
- (a) the works conducted in accordance with condition 1;

- (b) any maintenance of infrastructure that is performed in the course of complying with conditions 5 and 16 of this works approval;
- (c) monitoring programmes undertaken in accordance with condition 8 and 19; and
- (d) complaints received under condition 23.

**25.** The books specified under condition 24 must:

- (a) be legible;
- (b) if amended, be amended in such a way that the original version(s) and any subsequent amendments remain legible and are capable of retrieval;
- (c) be retained by the works approval holder for the duration of the works approval; and
- (d) be available to be produced to an inspector or the CEO as required.

## Definitions

In this works approval, the terms in Table 10 have the meanings defined.

**Table 10: Definitions**

Term	Definition
AS/NZS 5667.1	means the Australian Standard AS/NZS 5667.1 Water Quality – Sampling – Guidance on the design of sampling programs, sampling techniques and the preservation and handling of samples.
BOD	Biochemical Oxygen Demand
books	has the same meaning given to that term under the EP Act.
CEO	means Chief Executive Officer. CEO for the purposes of notification means:  Director General Department administering the <i>Environmental Protection Act 1986</i> Locked Bag 10 Joondalup DC WA 6919 <a href="mailto:info@dwer.wa.gov.au">info@dwer.wa.gov.au</a>
Department	means the department established under section 35 of the <i>Public Sector Management Act 1994</i> and designated as responsible for the administration of Part V Division 3 of the EP Act.
discharge	has the same meaning given to that term under the EP Act.
emission	has the same meaning given to that term under the EP Act.
environmental commissioning	means the sequence of activities to be undertaken to test equipment integrity and operation, or to determine the environmental performance, of equipment and infrastructure to establish or test a steady state operation and confirm design specifications.
Environmental Commissioning Report	means a report on any commissioning activities that have taken place and a demonstration that they have concluded, with focus on emissions and discharges, waste containment, and other environmental factors.
Environmental Compliance Report	means a report to satisfy the CEO that the conditioned infrastructure and/or equipment has been constructed and/or installed in accordance with the works approval.
EP Act	<i>Environmental Protection Act 1986 (WA)</i> .
EP Regulations	<i>Environmental Protection Regulations 1987 (WA)</i> .
NATA	National Association of Testing Authorities.
premises	the premises to which this licence applies, as specified at the front of this licence and as shown on the premises map (Figure 1) in Schedule 1 to this works approval.
prescribed premises	has the same meaning given to that term under the EP Act.

Term	Definition
time limited operations	refers to the operation of the infrastructure and equipment identified under this works approval that is authorised for that purpose, subject to the relevant conditions.
works approval	refers to this document, which evidences the grant of the works approval by the CEO under section 54 of the EP Act, subject to the conditions.
works approval holder	refers to the occupier of the premises being the person to whom this works approval has been granted, as specified at the front of this works approval.
WWTP	Wastewater Treatment Plant

---

**END OF CONDITIONS**

# Schedule 1: Maps

## Premises map

The boundary of the prescribed premises is shown in the map below (Figure 1)

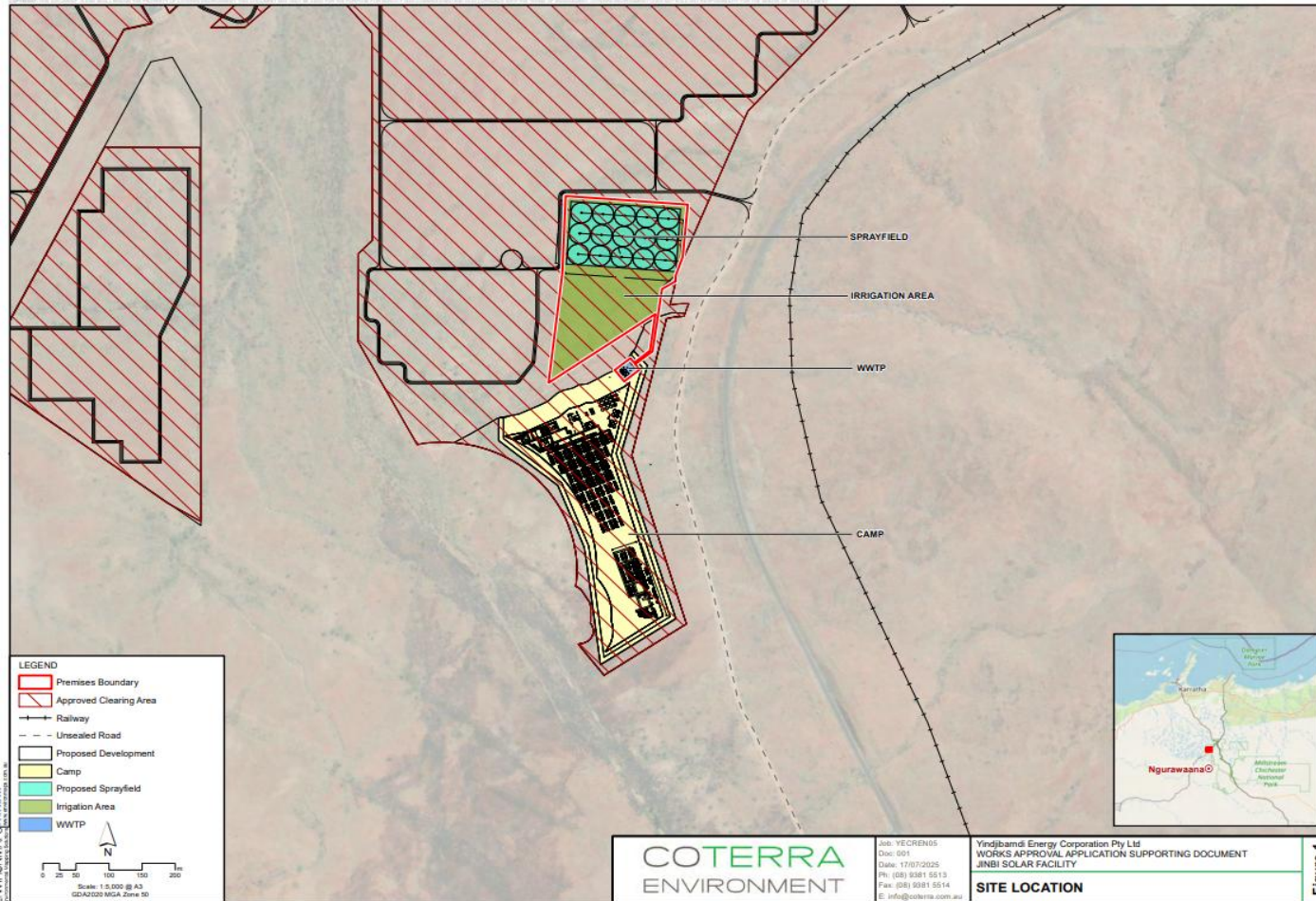


Figure 1: Map of the boundary of the prescribed premises

# Infrastructure

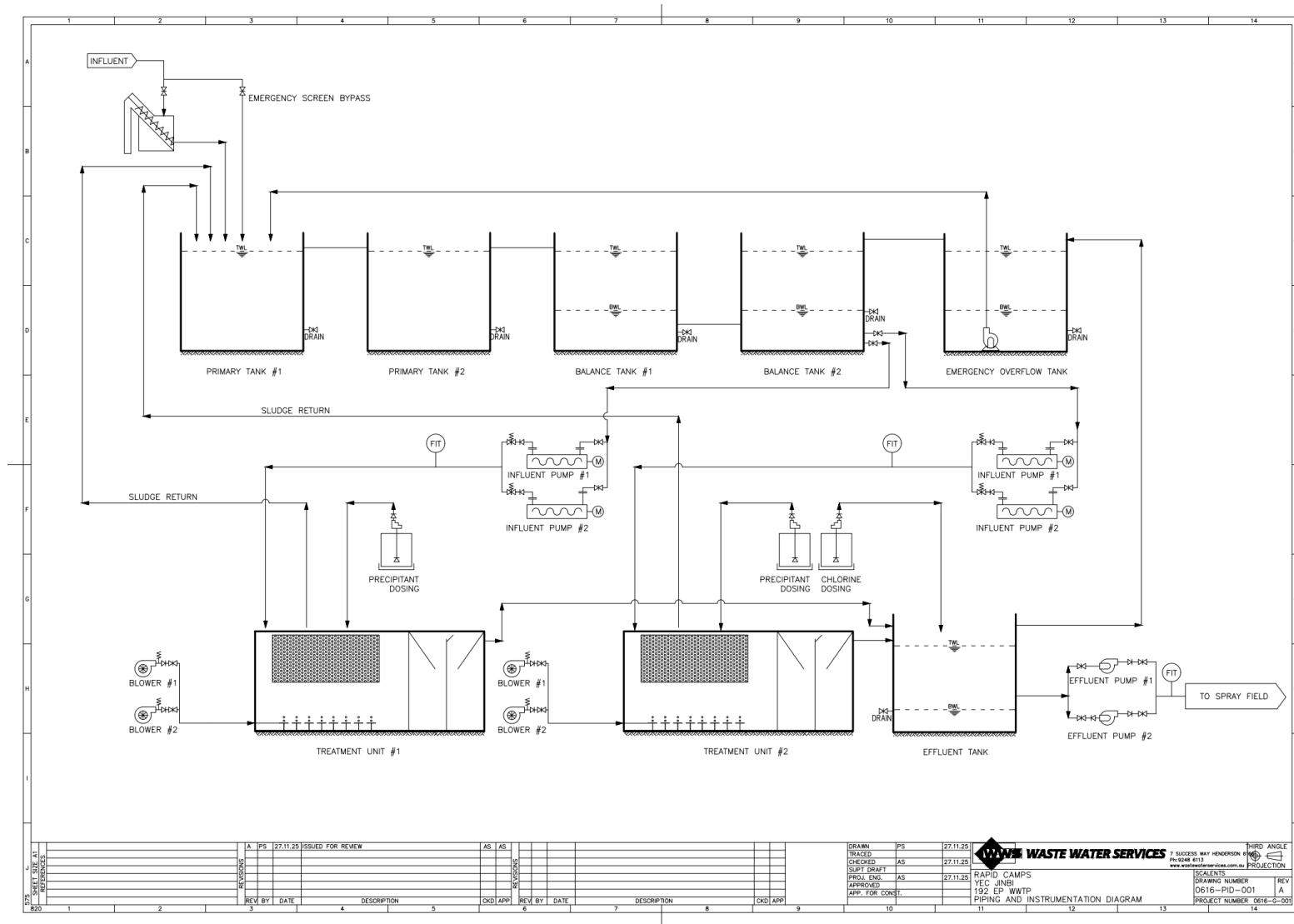


Figure 2: WWTP indicative layout arrangement

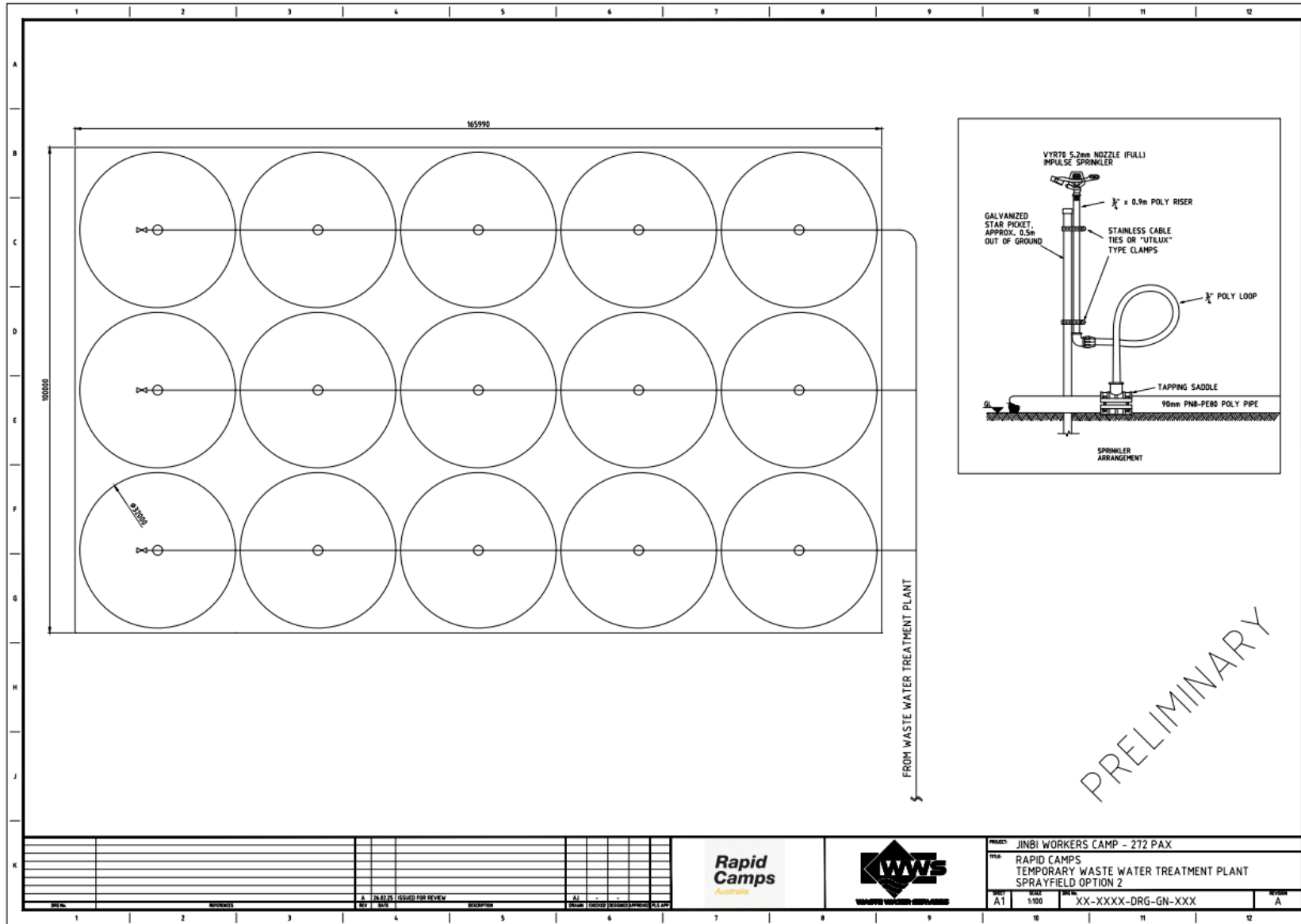


Figure 3: Indicative layout of irrigation spray field

W3044/2025/1

IR-T05 Works approval template (v6.0) (September 2022)