



# Works Approval

<b>Works approval number</b>	W3095/2025/1	
<b>Works approval holder</b>	Focus Operations Pty Ltd	
<b>ACN</b>	115 821 255	
<b>Registered business address</b>	Level 5, 8 St Georges Terrace PERTH WA 6000	
<b>DWER file number</b>	INS-0003095	
<b>Duration</b>	09/01/2026 to	08/01/2029
<b>Date of issue</b>	09/01/2026	
<b>Premises details</b>	Caledonia North Extension Legal description L 15/161, M15/154, M 15/645, M15/142, M15/1788 and part tenement L15/95  As defined by the premises maps attached to the issued works approval	

Prescribed premises category description (Schedule 1, <i>Environmental Protection Regulations 1987</i> )	Assessed production / design capacity
Category 6: Mine dewatering	270,000 tonnes per year

This works approval is granted to the works approval holder, subject to the attached conditions, on 9 January 2026, by:

**MANAGER, RESOURCE INDUSTRIES**

an officer delegated under section 20 of the *Environmental Protection Act 1986* (WA)

## Works approval history

Date	Reference number	Summary of changes
09/01/2026	W3095/2025/1	Works approval granted.

## Interpretation

In this works approval:

- (a) the words 'including', 'includes' and 'include' in conditions mean "including but not limited to", and similar, as appropriate;
- (b) where any word or phrase is given a defined meaning, any other part of speech or other grammatical form of that word or phrase has a corresponding meaning;
- (c) where tables are used in a condition, each row in a table constitutes a separate condition;
- (d) any reference to an Australian or other standard, guideline, or code of practice in this works approval:
  - (i) if dated, refers to that particular version; and
  - (ii) if not dated, refers to the latest version and therefore may be subject to change over time;
- (e) unless specified otherwise, any reference to a section of an Act refers to that section of the EP Act; and
- (f) unless specified otherwise, all definitions are in accordance with the EP Act.

**NOTE:** This works approval requires specific conditions to be met but does not provide any implied authorisation for other emissions, discharges, or activities not specified in this works approval.

# Works approval conditions

The works approval holder must ensure that the following conditions are complied with:

## Construction phase

### Infrastructure and equipment

1. The works approval holder must:
  - (a) Install the infrastructure;
  - (b) in accordance with the corresponding design and construction requirements; and
  - (c) at the corresponding infrastructure location; as set out in Table 1.

**Table 1: Design and construction / installation requirements**

	Infrastructure	Design and construction / installation requirements	Infrastructure location
1.	CNX pit Dewatering pipeline	<ol style="list-style-type: none"> <li>1. Pipeline required to meet the following standards:               <ol style="list-style-type: none"> <li>(a) AS/NZS 2033:3008: Installation of polyethylene pipe systems;</li> <li>(b) AS/NZS 4129:2008: Fittings for polyethylene (PE) pipes for pressure applications;</li> <li>(c) AS/NZS 4130:2009 Polyethylene (PE) pipes for pressure applications; and</li> <li>(d) AS/NZS 4131:2010: Polyethylene (PE) compounds for pressure pipes and fittings.</li> </ol> </li> <li>2. Pipeline to be:               <ol style="list-style-type: none"> <li>(a) Equipped with telemetry systems and pressure sensors along pipeline to allow the detection of leaks and failures</li> <li>(b) Equipped with automatic shut-off in the event of pipe failure</li> <li>(c) Installed with secondary containment (v-drains and scour pits) sufficient to contain any spill for a period equal to the time between routine inspections.</li> <li>(d) Pipeline to have a minimum pressure rating of PN6.3</li> </ol> </li> </ol>	Pipeline route to be located as shown in Schedule 1 Figure 1

	Infrastructure	Design and construction / installation requirements	Infrastructure location
	CNX mine water ponds	Constructed of compacted clay material and lined with HDPE of at least 1mm thickness.	Located as shown in Schedule 1 Figure 1 for CNX Mine Water Pond.
2.	CNX standpipe	<ol style="list-style-type: none"> <li>1. The standpipe is to be: <ol style="list-style-type: none"> <li>(a) located within a bunded area.</li> <li>(b) secured at the base to prevent toppling.</li> </ol> </li> <li>2. Water tanks associated with the standpipe are to be located within secondary containment.</li> <li>3. The secondary containment must be of sufficient capacity to contain the combine volumes of the tanks.</li> </ol>	Located as shown in Schedule 1 Figure 1 for CNX Mine Water Pond.

2. The works approval holder must use water carts to manage dust lift-off from active construction areas to protect the environment by preventing and, where that is not possible, minimising dust emissions that may cause, unreasonable emissions, pollution or environmental harm.

### Compliance reporting

3. The works approval holder must within 30 calendar days of the items of infrastructure or equipment required by condition 1 being constructed and/or installed:
- (a) undertake an audit of their compliance with the requirements of condition 1; and
  - (b) prepare and submit to the CEO an Environmental Compliance Report on that compliance.
4. The Environmental Compliance Report required by condition 3, must include as a minimum the following:
- (a) certification by a suitably qualified civil or structural engineer that the items of infrastructure, as specified in condition 1 have been constructed in accordance with the relevant requirements specified in condition 1.
  - (b) as constructed plans or photographs and a detailed site plan for each item of infrastructure or component of infrastructure specified in condition 1; and
  - (c) be signed by a person authorised to represent the works approval holder and contains the printed name and position of that person.

## Time limited operations phase

### Commencement and duration

5. The works approval holder may only commence time limited operations for an item of infrastructure identified in condition 9, where the Environmental Compliance Report as required by condition 3 has been submitted by the works approval holder for that item of infrastructure
6. The works approval holder may conduct time limited operations for an item of infrastructure specified in condition 9:
  - (a) For or a period not exceeding 180 calendar days from the day the works approval holder meets the requirements of condition 6 (as applicable) for that item of infrastructure; or
  - (b) Until such time as a licence for that item of infrastructure is granted in accordance with Part V of the Environmental Protection Act 1986, if one is granted before the end of the period specified in condition 7(a).

### Time limited operations requirements and emission limits

7. During time limited operations, the works approval holder must ensure that the premises infrastructure and equipment listed in Table 2 and located at the corresponding infrastructure location is maintained and operated in accordance with the corresponding operational requirements set out in Table 2.
8. During time limited operations, the works approval holder is only authorised to discharge mine dewater to the discharge points depicted in Schedule 1, Figure 1
9. During time limited operations, the works approval holder must ensure that the premises infrastructure and equipment listed in Table 2 is maintained and operated in accordance with the corresponding operational requirement set out in Table 2.

**Table 2: Infrastructure and equipment requirements during time limited operations**

	Site infrastructure and equipment	Operational requirements	Infrastructure location
1.	CNX pit pipeline	Pipeline inspected twice per 24 hour period when in operation	Schedule 1 Maps – Figure 1
2.	CNX mine water ponds, standpipe and water tanks	Inspected twice per 24 hour period when in operation	
3.	Greenfields Pit	Minimum 6m freeboard maintained at discharge points with daily inspections to confirm compliance.	
4.	Lindsays Pit		

10. During time limited operations, the works approval holder must ensure that the emissions specified in Table 3 are discharged only from the corresponding discharge point and only at the corresponding discharge point location.

**Table 3: Authorised discharge points**

Emission	Discharge point	Discharge point location
Saline water from CNX Pit, Greenfields Pit, Bonnievale Underground and Baileys Underground (Prices Shaft and Vent rise)	Lindsay's Pit	Schedule 1 Maps – Figure 1
	Greenfields Pit	

**Monitoring during time limited operations**

11. The works approval holder must monitor the specified parameters in accordance with Table 4 and record the results of all such monitoring.

**Table 4: Monitoring of emissions to land**

Location	Parameter	Unit	Frequency
<ul style="list-style-type: none"> <li>• Greenfields Pit</li> <li>• Lindsays Pit</li> <li>• Baileys Underground (Prices Shaft and Vent rise)</li> </ul>	Volumetric flow rate	kL	Monthly
	Freeboard	metres below crest level	
	pH <sup>1</sup>	mg/L	Quarterly
	TDS1		
	arsenic (As), cadmium (Cd), calcium (Ca), chloride (Cl) chromium (Cr), copper (Cu), gold (Au), iron (Fe), lead (Pb), magnesium (Mg), mercury (Hg), nickel (Ni), potassium (K), sodium (Na), zinc (Zn)		

Note 1: In-field non-NATA accredited analysis permitted.

**Process Monitoring**

12. The works approval holder must undertake the monitoring in table 5 according to the specifications in that table

**Table 5: Process Monitoring**

Process description	Parameter	Unit	Frequency
Mine Dewatering	Cumulative water discharged into Greenfields pit	kL	Continuous
	Cumulative water discharged into Lindsays Pit		
	Abstraction from Bayley's Underground (Prices Shaft and Vent Rise)		

### Compliance reporting

- 13.** The works approval holder must submit to the CEO a report on time limited operations within 30 calendar days of the completion date of time limited operations or 30 calendar days before the expiration date of the works approval, whichever is the sooner.
- 14.** The works approval holder must ensure the report required by condition 13 includes the following:
- (a) a summary of the time limited operations, including timeframes and the volume of dewatering discharged;
  - (b) a summary of monitoring results obtained during time limited operations under condition 11;
  - (c) the details of any complaints received during time limited operations in accordance with condition 15;
  - (d) a summary of the environmental performance of all infrastructure as constructed or installed (as applicable), which includes records detailing the:
    - (i) leaks of failures of the pipelines and;
    - (ii) the performance of the secondary containment in preventing releases to the environment
  - (e) a review of performance and compliance against the conditions of the works approval; and
  - (f) where the manufacture's design specifications and the conditions of this works approval have not been met, what measures will the works approval holder take to meet them, and what timeframes will be required to implement those measures.

### Records and reporting (general)

- 15.** The works approval holder must record the following information in relation to complaints received by the works approval holder (whether received directly from a complainant or forwarded to them by the Department or another party) about any alleged emissions from the premises:
- (a) the name and contact details of the complainant, (if provided);
  - (b) the time and date of the complaint;
  - (c) the complete details of the complaint and any other concerns or other issues raised; and
  - (d) the complete details and dates of any action taken by the works approval holder to investigate or respond to any complaint.

- 16.** The works approval holder must maintain accurate and auditable books including the following records, information, reports, and data required by this works approval:
- (a) the works conducted in accordance with condition 1;
  - (b) any maintenance of infrastructure that is performed in the course of complying with condition 9;
  - (c) monitoring programmes undertaken in accordance with condition 10 and
  - (d) complaints received under condition 13.
- 17.** The books specified under condition 14 must:
- (a) be legible;
  - (b) if amended, be amended in such a way that the original version(s) and any subsequent amendments remain legible and are capable of retrieval;
  - (c) be retained by the works approval holder for the duration of the works approval; and
  - (d) be available to be produced to an inspector or the CEO as required.

## Definitions

In this works approval, the terms in Table have the meanings defined.

**Table 6: Definitions**

Term	Definition
books	has the same meaning given to that term under the EP Act.
CEO	means Chief Executive Officer. CEO for the purposes of notification means:  Director General Department administering the <i>Environmental Protection Act 1986</i> Locked Bag 10 Joondalup DC WA 6919  <a href="mailto:info@dwer.wa.gov.au">info@dwer.wa.gov.au</a>
Department	means the department established under section 35 of the <i>Public Sector Management Act 1994</i> and designated as responsible for the administration of Part V Division 3 of the EP Act.
discharge	has the same meaning given to that term under the EP Act.
emission	has the same meaning given to that term under the EP Act.
Environmental Compliance Report	means a report to satisfy the CEO that the conditioned infrastructure and equipment has been constructed and installed in accordance with the works approval.
EP Act	<i>Environmental Protection Act 1986 (WA)</i> .
EP Regulations	<i>Environmental Protection Regulations 1987 (WA)</i> .
premises	the premises to which this licence applies, as specified at the front of this licence and as shown on the premises map (Figure 1) in Schedule 1 to this works approval.
prescribed premises	has the same meaning given to that term under the EP Act.
Suitably qualified civil or structural engineer	means a person who:  (a) holds a Bachelor of Engineering degree recognised by Engineers Australia; and  (b) has a minimum of five years of experience working in a supervisory role in civil or structural engineering; and  (c) is employed by an independent third party external to the Works Approval Holder's business;  or is otherwise approved in writing by the CEO to act in this capacity.

Term	Definition
time limited operations	refers to the operation of the infrastructure and equipment identified under this works approval that is authorised for that purpose, subject to the relevant conditions.
works approval	refers to this document, which evidences the grant of the works approval by the CEO under section 54 of the EP Act, subject to the conditions.
works approval holder	refers to the occupier of the premises being the person to whom this works approval has been granted, as specified at the front of this works approval.

---

**END OF CONDITIONS**

# Schedule 1: Maps

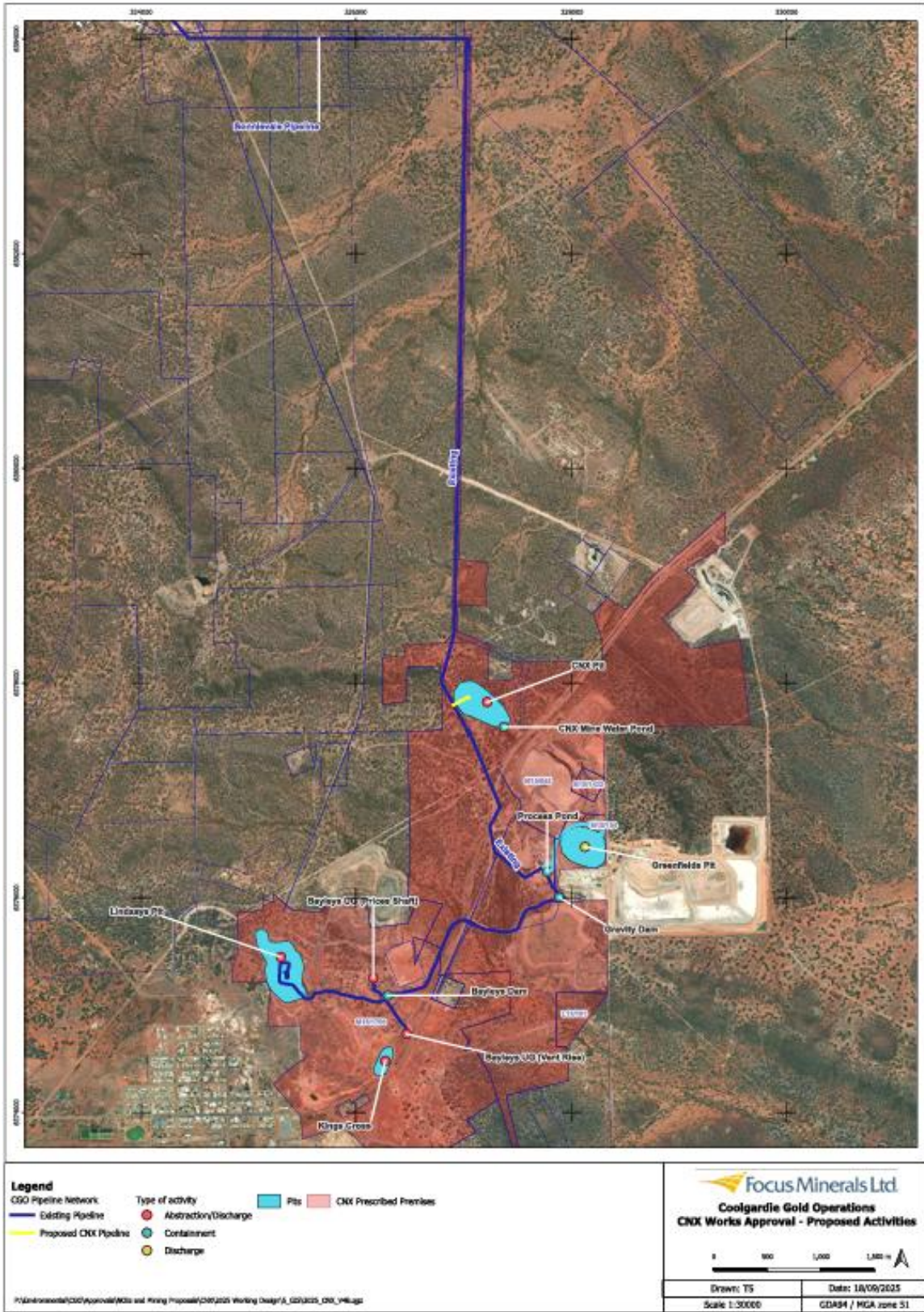


Figure 1: Map of the boundary of the prescribed premises

W3095/2025/1 (09/01/2026)  
 IR-T05 Works approval template (v6.0) (September 2022)