



Works Approval

Works approval number	W6767/2022/1
Works approval holder	Hamersley HMS Pty Ltd
ACN	115 004 129
Registered business address	152-158 St Georges Terrace PERTH WA 6000
DWER file number	DER2022/000660; INS-0002631
Duration	16/05/2023 to 16/05/2028
Date of issue	16/05/2023
Date of amendment	16/12/2025
Premises details	Hope Downs 4 Iron Ore Mine – BOO Crushing and Screening Plant Legal description – Part of ML282SA NEWMAN WA 6753 As defined by the coordinates in Schedule 2 and the premises map in Schedule 1

Prescribed premises category description (Schedule 1, <i>Environmental Protection Regulations 1987</i>)	Assessed production capacity
Category 5: Processing or beneficiation of metallic or non-metallic ore	6,000,000 tonnes per annual period

This works approval is granted to the works approval holder, subject to the attached conditions, on 16 December 2025, by:

SENIOR ENVIRONMENTAL OFFICER, INDUSTRY REGULATION

Officer delegated under section 20 of the Environmental Protection Act 1986

Works approval history

Date	Reference number	Summary of changes
16/05/2023	W6767/2022/1	Works approval granted.
11/10/2024	W6767/2022/1	Works approval amended for: <ul style="list-style-type: none"> • Construction of a secondary crushing system consisting of three cone crushers; • Construction of lump product conveyors; and • Amendment to the location of the evaporation pond and separation pond at the Premises.
16/12/2025	W6767/2022/1	Amendment to extend the approved duration of time limited operations.

Interpretation

In this works approval:

- (a) the words ‘including’, ‘includes’ and ‘include’ in conditions mean “including but not limited to”, and similar, as appropriate;
- (b) where any word or phrase is given a defined meaning, any other part of speech or other grammatical form of that word or phrase has a corresponding meaning;
- (c) where tables are used in a condition, each row in a table constitutes a separate condition;
- (d) any reference to an Australian or other standard, guideline, or code of practice in this works approval:
 - (i) if dated, refers to that particular version; and
 - (ii) if not dated, refers to the latest version and therefore may be subject to change over time;
- (e) unless specified otherwise, any reference to a section of an Act refers to that section of the EP Act; and
- (f) unless specified otherwise, all definitions are in accordance with the EP Act.

NOTE: This works approval requires specific conditions to be met but does not provide any implied authorisation for other emissions, discharges, or activities not specified in this works approval.

Works approval conditions

The works approval holder must ensure that the following conditions are complied with:

Construction phase

Infrastructure and equipment

1. The works approval holder must:
 - (a) construct and/or install the infrastructure and/or equipment;
 - (b) in accordance with the corresponding design and construction / installation requirements; and
 - (c) at the corresponding infrastructure location; as set out in Table 1.

Table 1: Design and construction / installation requirements

Item number	Infrastructure	Design and construction / installation requirements	Infrastructure location
1	Build, Own and Operate (BOO) Crushing and Screening Plant and associated infrastructure	<ol style="list-style-type: none"> 1) BOO Crushing and Screening Plant and associated infrastructure to consist of the following components: <ul style="list-style-type: none"> • ROM bin • Primary Crusher • Secondary Crushing System • Screens • Conveyors • Rock breakers • Weightometers • Tramp metal detectors • Sample stations • Lump product conveyors • Fines product stacker • BOO ROM pad • BOO Crushing and Screening Plant stockyard pad • Hoppers 2) Layout of BOO Crushing and Screening Plant and associated infrastructure to be in accordance with Figure 2 in Schedule 1. 3) Dust suppression sprays to be installed at the ROM bin and at each conveyor loading section, discharge chute and stacker. 4) Conveyor chutes to be enclosed as far as practicable. 5) Hydrocarbon storage areas and refueling facilities to have secondary containment to ensure spills are contained. 	Schedule 1: Maps, Figure 1 and Figure 2

Item number	Infrastructure	Design and construction / installation requirements	Infrastructure location
2	Stormwater Management	1) Contaminated stormwater management: <ul style="list-style-type: none"> • Stormwater management infrastructure to be constructed to ensure hydrocarbon / sediment contaminated stormwater is captured and prevented from release to the environment. • Drainage sumps to settle out sediment prior to discharge from the plant area. • Oily water separators (centrifugal type or similar) to separate out hydrocarbons from surface water. 2) Uncontaminated stormwater management <ul style="list-style-type: none"> • Surface water drains and bunding to be constructed around the BOO Crushing and Screening Plant envelope area, to ensure uncontaminated stormwater is kept separate from contaminated or potentially contaminated stormwater. 	Schedule 1: Maps, Figure 1 and Figure 2

Compliance reporting

2. The works approval holder must within 30 calendar days of an item of infrastructure or equipment required by condition 1 being constructed and/or installed:
 - (a) undertake an audit of their compliance with the requirements of condition 1 and
 - (b) prepare and submit to the CEO an Environmental Compliance Report on that compliance.

3. The Environmental Compliance Report required by condition 2(b) must include as a minimum the following:
 - (a) certification by a suitably qualified engineer that the items of infrastructure or component(s) thereof, as specified in condition 1, have been constructed in accordance with the relevant requirements specified in condition 1
 - (b) as constructed plans or photographs and a detailed site plan for each item of infrastructure or component of infrastructure specified in condition 1; and
 - (c) be signed by a person authorised to represent the works approval holder and contains the printed name and position of that person.

Environmental commissioning phase

4. The works approval holder may only commence environmental commissioning of an item of infrastructure identified in condition 1 once the Environmental Compliance

Report has been submitted for that item of infrastructure in accordance with condition 2 of this works approval.

5. Any environmental commissioning activities undertaken for an item of infrastructure specified in Table 2 may only be carried out:
 - (a) in accordance with the corresponding commissioning requirements; and,
 - (b) for the corresponding authorised commissioning duration.

Table 2: Environmental commissioning requirements

Item	Infrastructure	Commissioning requirements	Authorised commissioning duration
1	BOO Crushing and Screening Plant and associated infrastructure	1) Infrastructure to be tested to ensure all components are working in accordance with manufactures specifications. 2) Dust suppression sprays to be tested to ensure functionality. 3) Stormwater to be managed so contaminated or potentially contaminated stormwater from within BOO Crushing and Screening Plant area is captured to prevent release into the environment.	For a period not exceeding 90 calendar days in aggregate

Environmental Commissioning Reporting

6. The works approval holder must submit to the CEO an Environmental Commissioning Report within 30 calendar days of the completion date of environmental commissioning for each item of infrastructure specified in Table 2.
7. The works approval holder must ensure the Environmental Commissioning Report required by condition 6 of this works approval includes the following:
 - (a) a summary of the environmental performance of each item of infrastructure or equipment as constructed or installed (as applicable).
 - (b) a review of the works approval holder’s performance and compliance against the conditions of this works approval; and
 - (c) where they have not been met, measures proposed to meet the manufacturer’s design specifications and the conditions of this works approval, together with timeframes for implementing the proposed measures.

Time limited operations phase

Commencement and duration

8. The works approval holder may only commence time limited operations for an item of infrastructure identified in condition 10:
 - (a) where the Environmental Compliance Report as required by condition 2 has been submitted by the works approval holder for that item of infrastructure; and

- (b) where the Environmental Commissioning Report required by condition 6 has been submitted by the works approval holder for that item of infrastructure.
9. The works approval holder may conduct time limited operations for an item of infrastructure specified in condition 10 (as applicable):
- (a) for a period not exceeding 360 calendar days from the day the works approval holder meets the requirements of condition 8 for that item of infrastructure; or,
 - (b) until such time as a licence for that item of infrastructure is granted in accordance with Part V of the *Environmental Protection Act 1986*, if one is granted before the end of the period specified in condition 9(a).

Time limited operations requirements

10. During time limited operations, the works approval holder must ensure that the premises infrastructure and equipment listed in Table 3 and located at the corresponding infrastructure location is maintained and operated in accordance with the corresponding operational requirement set out in Table 3.

Table 3: Infrastructure and equipment requirements during time limited operations

Item	Site infrastructure and equipment	Operational requirement	Infrastructure location
1.	BOO Crushing and Screening Plant and associated infrastructure	<ul style="list-style-type: none"> 1) Record volumes of ore processed through the crushing and screening plant. 2) Stormwater to be managed so contaminated or potentially contaminated stormwater from within BOO Crushing and Screening Plant area is captured to prevent release into the environment. 3) Dust suppression sprays at the ROM bin and at each conveyor loading section, discharge chute and stacker to be maintained and operated. 	Schedule 1: Maps, Figure 1 and Figure 2
2	Evaporation/Sediment Pond x 2	<ul style="list-style-type: none"> 1) A minimum operational freeboard of 0.5m (Pond 1) and 0.68m (Pond 2) must be maintained to ensure storage capacity is not exceeded. 2) Evaporation/Sediment Pond x 2 to be maintained with a 1.5mm HDPE liner with a permeability of 1×10^{-9} m/s or less. 3) Daily visual inspections to ensure freeboard capacity is available and no potential embankment seepage. 4) The Evaporation/Sediment Pond x 2 must be regularly inspected and pumped out to remove excess sediment to prevent overflowing of contaminated stormwater. 5) Potentially contaminated water will be directed to the Evaporation/Sediment 	Schedule 1: Maps, Figure 1 and Figure 2

Item	Site infrastructure and equipment	Operational requirement	Infrastructure location
		Pond x 2 via surface land contour management and stormwater diversion drains.	

Compliance reporting

11. The works approval holder must submit to the CEO a report on the time limited operations within 30 calendar days of the completion date of time limited operations or 60 calendar days before the expiration date of the works approval, whichever is the sooner.
12. The works approval holder must ensure the report required by condition 11 includes the following:
 - (a) a summary of the time limited operations, including timeframes and amount of material processed;
 - (b) a summary of the environmental performance of all infrastructure as constructed or installed (as applicable).
 - (c) a review of performance and compliance against the conditions of the works approval and the Environmental Commissioning Report; and
 - (d) where the manufacturer's design specifications and the conditions of this works approval have not been met, what measures will the works approval holder take to meet them, and what timeframes will be required to implement those measures.

Records and reporting (general)

13. The works approval holder must record the following information in relation to complaints received by the works approval holder (whether received directly from a complainant or forwarded to them by the Department or another party) about any alleged emissions from the premises:
 - (a) the name and contact details of the complainant, (if provided);
 - (b) the time and date of the complaint;
 - (c) the complete details of the complaint and any other concerns or other issues raised; and
 - (d) the complete details and dates of any action taken by the works approval holder to investigate or respond to any complaint.
14. The works approval holder must maintain accurate and auditable books including the following records, information, reports, and data required by this works approval:
 - (a) the works conducted in accordance with condition 1;
 - (b) any maintenance of infrastructure that is performed in the course of complying with condition 10;
 - (c) complaints received under condition 13.
15. The books specified under condition 14 must:
 - (a) be legible;

- (b) if amended, be amended in such a way that the original version(s) and any subsequent amendments remain legible and are capable of retrieval;
- (c) be retained by the works approval holder for the duration of the works approval; and
- (d) be available to be produced to an inspector or the CEO as required.

Definitions

In this works approval, the terms in Table 4 have the meanings defined.

Table 4: Definitions

Term	Definition
books	has the same meaning given to that term under the EP Act.
CEO	means Chief Executive Officer. CEO for the purposes of notification means: Director General Department administering the <i>Environmental Protection Act 1986</i> Locked Bag 10 Joondalup DC WA 6919 info@dwer.wa.gov.au
Department	means the department established under section 35 of the <i>Public Sector Management Act 1994</i> and designated as responsible for the administration of Part V Division 3 of the EP Act.
discharge	has the same meaning given to that term under the EP Act.
emission	has the same meaning given to that term under the EP Act.
environmental commissioning	means the sequence of activities to be undertaken to test equipment integrity and operation, or to determine the environmental performance, of equipment and infrastructure to establish or test a steady state operation and confirm design specifications.
Environmental Commissioning Report	means a report on any commissioning activities that have taken place and a demonstration that they have concluded, with focus on emissions and discharges, waste containment, and other environmental factors.
Environmental Compliance Report	means a report to satisfy the CEO that the conditioned infrastructure and/or equipment has been constructed and/or installed in accordance with the works approval.
EP Act	<i>Environmental Protection Act 1986</i> (WA).
EP Regulations	<i>Environmental Protection Regulations 1987</i> (WA).

Term	Definition
HDPE	means High Density Polyethylene.
premises	the premises to which this licence applies, as specified at the front of this licence and as shown on the premises map (Figure 1 and Figure 2) in Schedule 1 of this works approval.
prescribed premises	has the same meaning given to that term under the EP Act.
ROM	Run of Mine
time limited operations	refers to the operation of the infrastructure and equipment identified under this works approval that is authorised for that purpose, subject to the relevant conditions.
works approval	refers to this document, which evidences the grant of the works approval by the CEO under section 54 of the EP Act, subject to the conditions.
works approval holder	refers to the occupier of the premises being the person to whom this works approval has been granted, as specified at the front of this works approval.

END OF CONDITIONS

Schedule 1: Maps

Premises map

The boundary of the prescribed premises is shown in pink within the map below (Figure 1).

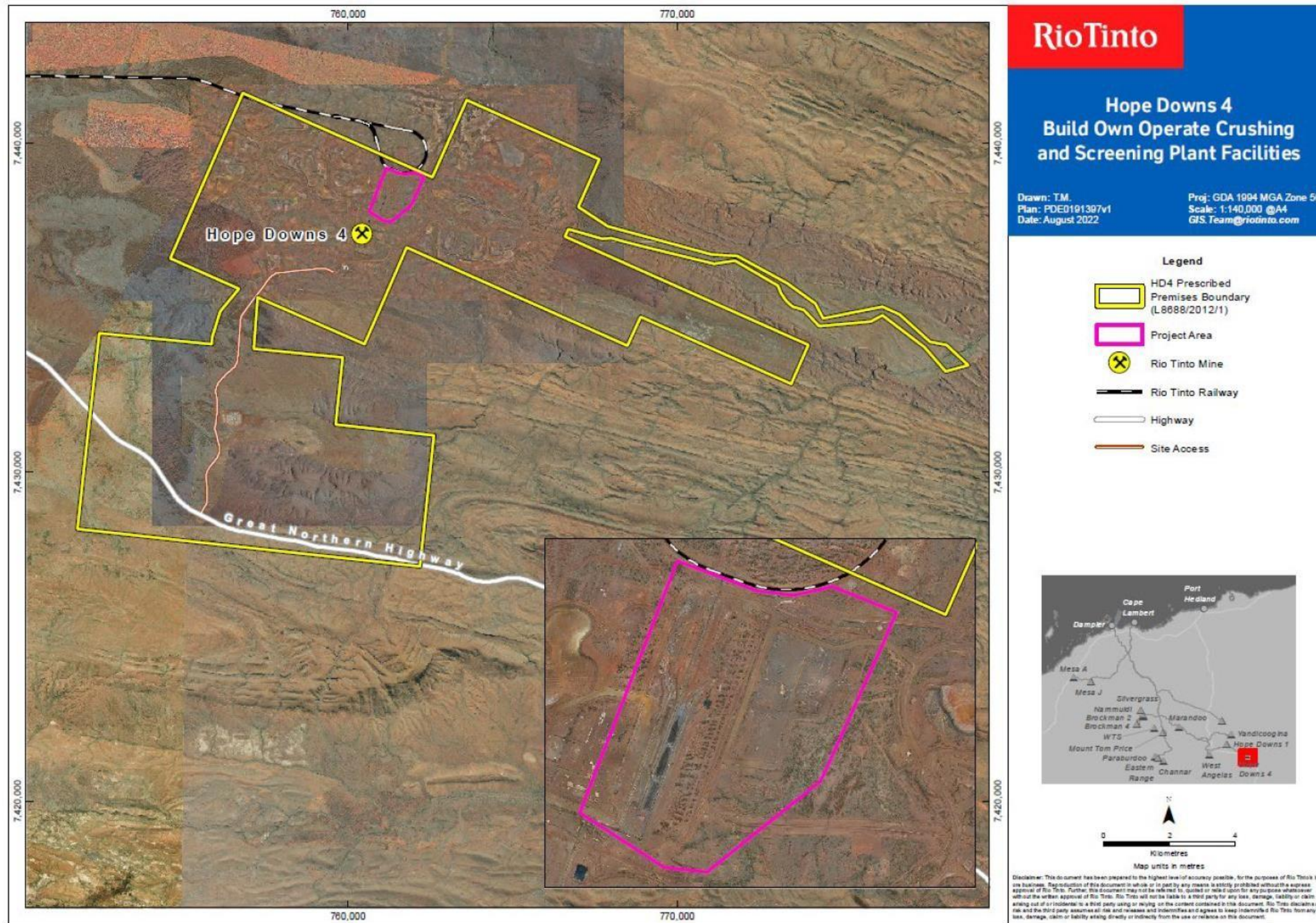


Figure 1: Map of the boundary of the prescribed premises

BOO Crushing and Screening Plant and Infrastructure Layout Map

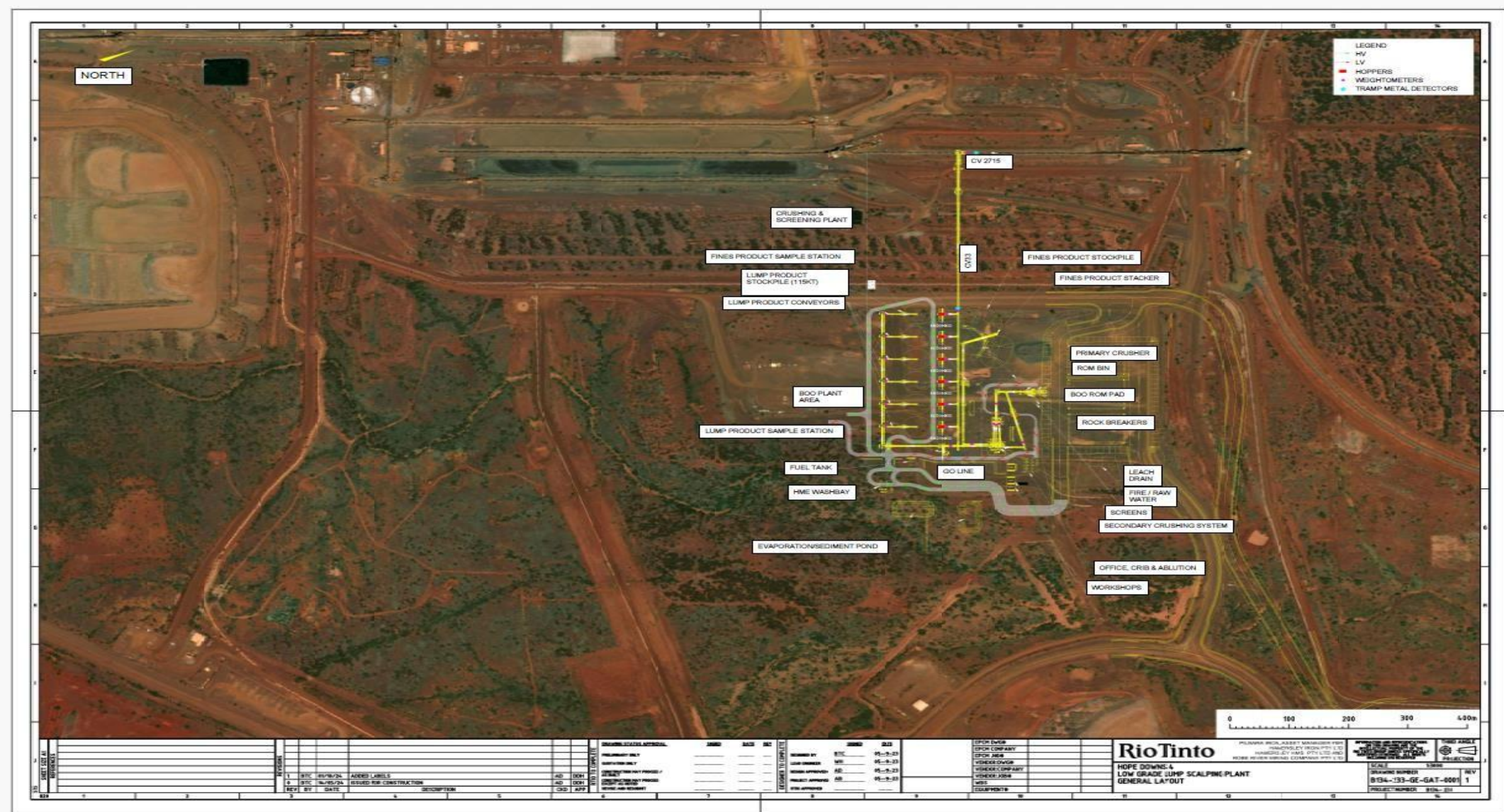


Figure 2: BOO Crushing and Screening Plant and Infrastructure Layout

Schedule 2: Premises boundary

The corners of the premises boundary are the coordinates listed in Table 5.

Table 5: Premises boundary coordinates (GDA2020)

	Easting	Northing	Zone
1.	762234.926	7438787.594	MGA 94 Zone 50
2.	761917.0211	7438093.039	MGA 94 Zone 50
3.	761323.2462	7437614.952	MGA 94 Zone 50
4.	761098.2192	7437637.261	MGA 94 Zone 50
5.	760656.2743	7437923.219	MGA 94 Zone 50
6.	761167.1464	7439247.548	MGA 94 Zone 50
7.	761393.3916	7439160.272	MGA 94 Zone 50
8.	761577.5334	7439089.238	MGA 94 Zone 50
9.	761775.3274	7439067.05	MGA 94 Zone 50
10.	761980.0817	7439109.639	MGA 94 Zone 50
11.	762315.3135	7438977.778	MGA 94 Zone 50