



# Works Approval

**Works approval number** W2969/2025/1

**Works approval holder** Chairay Sustainable Plastic Co Pty Ltd

**ACN** 631 751 703

**Registered business address** 5 Burrum Court QLD 4113

**DWER file number** INS-0002969

**Duration** 26/11/2025 to 25/11/2030

**Date of issue** 26/11/2025

**Premises details**

Chairay Sustainable Plastic  
Warehouse A, 204 Bannister Road  
CANNING VALE WA 6155

Legal description -  
Part Lot 165 on Plan 13436  
Certificate of Title Volume 1589 Folio 88  
As defined by the coordinates in Schedule 2

Prescribed premises category description (Schedule 1, <i>Environmental Protection Regulations 1987</i> )	Assessed production / design capacity
Category 61A: Solid waste facility: premises (other than premises within category 67A) on which solid waste produced on other premises is stored, reprocessed, treated, or discharged onto land.	18,000 tonnes per annual period

This works approval is granted to the works approval holder, subject to the attached conditions, on 26 November 2025, by:

**Abbie Crawford**

**A/Senior Manager, Waste Industries**

an officer delegated under section 20 of the *Environmental Protection Act 1986* (WA)

## Works approval history

Date	Reference number	Summary of changes
26/11/2025	W2969/2025/1	APP-0029075; Works Approval granted

## Interpretation

In this works approval:

- (a) the words ‘including’, ‘includes’ and ‘include’ in conditions mean “including but not limited to”, and similar, as appropriate;
- (b) where any word or phrase is given a defined meaning, any other part of speech or other grammatical form of that word or phrase has a corresponding meaning;
- (c) where tables are used in a condition, each row in a table constitutes a separate condition;
- (d) any reference to an Australian or other standard, guideline, or code of practice in this works approval:
  - (i) if dated, refers to that particular version; and
  - (ii) if not dated, refers to the latest version and therefore may be subject to change over time;
- (e) unless specified otherwise, any reference to a section of an Act refers to that section of the EP Act; and
- (f) unless specified otherwise, all definitions are in accordance with the EP Act.

**NOTE:** This works approval requires specific conditions to be met but does not provide any implied authorisation for other emissions, discharges, or activities not specified in this works approval.

## Works approval conditions

The works approval holder must ensure that the following conditions are complied with:

### Construction phase

#### Infrastructure and equipment

1. The works approval holder must:
  - (a) construct and/or install the infrastructure and equipment;
  - (b) in accordance with the corresponding design and construction / installation requirements; and
  - (c) at the corresponding infrastructure location;
 as set out in Table 1.

**Table 1: Design and construction/installation requirements**

Infrastructure	Design and construction / installation requirements	Infrastructure location
Warehouse area and yard	(a) Cracks and defects across the warehouse/hardstand area to be repaired; (b) Installation of submersible pump for the interconnected soak wells to transfer stormwater to the existing civil stormwater drain system with an automatic cut off in a fire event to contain firewater; and (c) Soak wells within the warehouse and loading bay must be sealed off.	Within premises boundary as depicted in Schedule 1, Figure 1
Plastic sorting and reprocessing equipment	Equipment comprising: <ol style="list-style-type: none"> <li>(a) Automatic sorting machine – including optical sorter, magnetic sorter and manual picking line</li> <li>(b) Plastic crusher;</li> <li>(c) Single shaft shredder;</li> <li>(d) Plastic washing system;</li> <li>(e) Dehydration (drying machine);</li> <li>(f) Stripping machine;</li> <li>(g) Flaking machine;</li> <li>(h) Plastic pelletizer (PET, HDPE and mixed plastic lines)</li> <li>(i) Automatic baling machine; and</li> <li>(j) Equipment/piping (i.e. scrubber) capable of capturing vapours produced during the pelletising process.</li> </ol>	As depicted in Schedule 1, Figure 2

Infrastructure	Design and construction / installation requirements	Infrastructure location
Wastewater treatment plant (WWTP)	<p>(a) Must be capable of treating up to 60 m<sup>3</sup> of wastewater per day;</p> <p>(b) Must be able to treat wastewater to trade waste specification standards of:</p> <ul style="list-style-type: none"> <li>(i) BOD &lt; 145 mg/L</li> <li>(ii) TSS &lt; 275 mg/L</li> <li>(iii) pH between 6-9</li> </ul> <p>(c) Constructed in line with AS/NZ 3780;</p> <p>(d) Installation of monitoring equipment at the discharge point to sewer which continually monitors flow rate, total suspended solids and biological oxygen demand;</p> <p>(e) Automatic notification system at discharge point to alert of any abnormalities and irregularities;</p> <p>(f) Concrete bunding to be constructed around the WWTP to a minimum height of 50 cm;</p> <p>(g) Discharge outlet fitted with screen to filter out plastic fines/residues from the treated wastewater; and</p> <p>(h) Bunding to be constructed around the sewer connection to prevent wastewater spills entering the drainage network.</p> <p>Constructed as per the specifications in Schedule 1, Figure 3, including:</p> <ul style="list-style-type: none"> <li>(a) Membrane batch reactor;</li> <li>(b) Fine screening machine;</li> <li>(c) Collection tanks (3 x 20,000 L and);</li> <li>(d) Mixing tank (20,000 L);</li> <li>(e) Discharge tank (2,000 L) ;</li> <li>(f) Fine screen water tank (1,100 L);</li> <li>(g) Dissolved Air Flotation tank (1,000 L);</li> <li>(h) Flotation collection tank (1,000 L);</li> <li>(i) Dewatering filtrate collection tank (1,100 L);</li> <li>(j) Polymer tanks (2 x 1,000 L);</li> <li>(k) NaOH tank (5,000 L);</li> <li>(l) PAC tank (5,000 L); and</li> <li>(m) Bacteria tank (4,000 L).</li> </ul>	As depicted in Schedule 1, Figure 3

Infrastructure	Design and construction / installation requirements	Infrastructure location
	<p>Must be capable of producing 180 kg of dewatered sludge per day.</p> <p>Sludge treatment infrastructure constructed as per specifications of Schedule 1, Figure 3, including:</p> <ul style="list-style-type: none"> <li>(a) Concentrated Sludge tank (5,000 L);</li> <li>(b) Flotation sludge tank (400 L);</li> <li>(c) Activated sludge tanks (3 x 58,000 L);</li> <li>(d) Sedimentation tank (28,000 L); and</li> <li>(e) Sludge dewatering machine</li> </ul>	
Fire prevention and management systems	<ul style="list-style-type: none"> <li>(a) Warehouse to be bunded to be able to contain 781,000 L of fire water</li> <li>(b) Installation of control interlock to automatically power off submersible pump when fire is detected (prevention of fire water draining to stormwater);</li> <li>(c) Installation of fire detection system; and</li> <li>(d) Firefighting infrastructure, including: <ul style="list-style-type: none"> <li>(i) 6 x fire hydrants</li> <li>(ii) 10 x fire hose reel</li> <li>(iii) 2 x fire water tanks</li> <li>(iv) sprinkler system</li> </ul> </li> </ul>	Within premises boundary as depicted in Schedule 1, Figure 1 and Figure 4
Diesel generators	<ul style="list-style-type: none"> <li>(a) Located on impermeable hardstand;</li> <li>(b) 2 x Cummins C750D5P Diesel Generators; and</li> <li>(c) Noise attenuating screens to be constructed around the generators</li> </ul>	As depicted in Schedule 1, Figure 2

## Compliance reporting

2. The works approval holder must within 60 calendar days of all items of infrastructure or equipment required by condition 1 being constructed and/or installed:
  - (a) undertake an audit of their compliance with the requirements of condition 1; and
  - (b) prepare and submit to the CEO an Environmental Compliance Report on that compliance.
3. The Environmental Compliance Report required by condition 2, must include as a minimum the following:
  - (a) certification by a suitably qualified engineer that the items of infrastructure or component(s) thereof, as specified in condition 1, have been constructed in accordance with the relevant requirements specified in condition 1
  - (b) as constructed plans and a detailed site plan for each item of infrastructure or component of infrastructure specified in condition 1; and
  - (c) be signed by a person authorised to represent the works approval holder and contains the printed name and position of that person.

## Environmental commissioning phase

4. The works approval holder must only commence environmental commissioning of an item of infrastructure listed in condition 1 once the Environmental Compliance Report has been submitted for that item of infrastructure in accordance with condition 2 of this works approval.
5. The works approval holder may conduct environmental commissioning for the items of infrastructure identified in condition 1 for a period not exceeding 180 calendar days from the day the works approval holder meets the requirements of condition 4.

## Environmental commissioning report

6. The works approval holder must submit to the CEO an Environmental Commissioning Report within 60 calendar days of the completion date of environmental commissioning for each item of infrastructure specified in condition 1.
7. The works approval holder must ensure the Environmental Commissioning Report required by condition 6 of this works approval includes the following:
  - (a) a summary of the environmental commissioning activities undertaken, including timeframes and amount of material processed;
  - (b) a summary of the environmental performance of each item of infrastructure or equipment as constructed or installed.
  - (c) a review of the works approval holder's performance and compliance against the conditions of this works approval; and
  - (d) where they have not been met, measures proposed to meet the design specifications and the conditions of this works approval, together with timeframes for implementing the proposed measures.

## Time limited operations phase

### Commencement and duration

8. The works approval holder must only commence time limited operations for an item of infrastructure identified in condition 1 where the Environmental Commissioning Report for that item of infrastructure as required by condition 6 has been submitted by the works approval holder.
9. The works approval holder may conduct time limited operations for an item of infrastructure specified in condition 1 (as applicable):
  - (a) for a period not exceeding 180 calendar days from the day the works approval holder meets the requirements of condition 8 for that item of infrastructure; or
  - (b) until such time as a licence for that item of infrastructure is granted in accordance with Part V of the *Environmental Protection Act 1986*, if one is granted before the end of the period specified in condition 9(a).
10. During time limited operations, the works approval holder must ensure that the premises infrastructure and equipment listed in Table 2 and located at the corresponding infrastructure location is maintained and operated in accordance with the corresponding operational requirement set out in Table 2.

**Table 2: Infrastructure and equipment requirements**

Infrastructure	Operational requirement	Infrastructure location
Warehouse	(a) Low permeability concrete hardstand maintained free of leaks and defects; and (b) Warehouse to have lockable doors/ entryways which are securely locked when the premises is unattended.	As depicted in Schedule 1, Figure 2
Stormwater drains	(a) Screens maintained on stormwater drains that prevent plastic fibers entering the stormwater drain; and (b) Weekly inspections and cleaning/replacing of stormwater screens as required	Within the premises boundary as depicted in Schedule 1, Figure 1
Plastic sorting and reprocessing equipment	(a) Must be maintained in accordance with the manufacturers specifications; (b) Soundproofing of the shaft shredder, crushing, dehydrator, and stripping machine is operating to manufacturers specifications; (c) Must be operated in a manner that ensures that noise emissions comply with the <i>Environmental Protection (Noise) Regulations 1997</i> ; and (d) Must be positioned on a hardstand area free from leaks and defects	As depicted in Schedule 1, Figure 2
Wastewater treatment plant	(a) Capable of treating 60 m <sup>3</sup> per day of wastewater from the plastic reprocessing plant; (b) Chemicals must be stored in accordance with Australian Standard AS/NZ 3780; (c) Must be positioned on a hardstand area free from leaks and defects; (d) Sewage transfer pipeline and conveyance infrastructure must be impermeable, free of leaks and defects; (e) Tanks to be covered to prevent stormwater ingress; (f) Dewatered sludge must be stored in impermeable containers/bags prior to offsite removal and disposal; and (g) Weekly inspections and cleaning/replacing of discharge outlet filter screen.	As depicted in Schedule 1, Figure 3
On site fire management and prevention equipment including but not limited to: <ul style="list-style-type: none"> <li>• Fire extinguishers</li> <li>• Fire hose reels</li> <li>• Sprinklers</li> </ul>	(a) All on-site fire management and prevention equipment to be stored so access is not impeded by infrastructure or equipment used in site operations; (b) All on-site fire management and prevention equipment must be maintained and in good working order at all times; (c) Fire detection system must be linked to emergency services; and (d) Firefighting water supply tanks (2) must maintain 300,000 capacity at all times.	As depicted in Schedule 1, Figure 4

Infrastructure	Operational requirement	Infrastructure location
Diesel generators	(a) Must be maintained and kept in good operational condition at all times; and (b) Must be maintained free of leaks and defects	As depicted in Schedule 1, Figure 2

- 11.** The works approval holder must only accept onto the premises waste of a waste type, which does not exceed the corresponding rate at which waste is received, and which meets the corresponding acceptance specification set out in Table 3.

**Table 3: Types of waste authorised to be accepted onto the premises**

Waste type	Rate at which waste is received	Acceptance specification
Inert waste type 2	18,000 tonnes per annual period	Limited to PET, HDPE, PP and Mixed Plastic

- 12.** Where waste does not meet the waste acceptance criteria set out in condition 11, the work approval holder must:
- (a) reject the waste; and
  - (b) record the details of the:
    - (i) waste (type and description);
    - (ii) source of the waste load;
    - (iii) name of the waste carrier;
    - (iv) registration number of the delivery vehicle; and
    - (v) date that the waste load was rejected.
  - (c) maintain accurate and auditable records of all waste loads rejected from the premises.
- 13.** The works approval holder must ensure that where waste does not meet the waste acceptance criteria set out in condition 12, it is removed from the premises by the delivery vehicle or, where that is not possible, stored in a quarantined storage area or container and removed to an appropriately authorised facility within 7 days.
- 14.** The works approval holder must ensure that the waste types specified in Table 4 are only subjected to the corresponding process(es), subject to the corresponding process limits and/or specifications.

**Table 4: Waste processing and storage**

Waste type	Process(es)	Process limits and/or specifications
Inert Waste Type 2 (HDPE, PET, PP and Mixed plastic)	Receipt handling, processing and storage prior to offsite removal	(a) All waste received onto the premises shall be directed to the receival area for processing or storage as required; (b) Warehouse roller doors to be closed during reprocessing operations except during deliveries; (c) All plastic for reprocessing must be stored in the raw material storage



Waste type	Process(es)	Process limits and/or specifications
		<p>area as depicted in Schedule 1, Figure 2;</p> <p>(d) Flammable chemicals must be stored within a locked, bunded area; and</p> <p>(e) Warehouse floor to be kept clean of loose waste plastic and pelletised material</p>
	Shredding	<p>(a) All plastic to be debaled prior to shredding;</p> <p>(b) All plastics requiring shredding will manually, optically and magnetically sorted for non-conforming waste; and</p> <p>(c) No non-conforming waste is to be shredded</p>
	Washing and drying	<p>(a) All wash water from the process must be captured and transferred to the onsite wastewater treatment plant; and</p> <p>(b) Once cleaned and washed, material must be dried</p>
	Flaking	<p>(a) Flaked material not for pelletising must be transferred directly to bulka bags and placed in the finished material storage area as depicted in Schedule 1, Figure 2</p>
	Pelletising	<p>(a) Molten plastic (heated at maximum to 300 degrees Celsius) must be forced through a screen to remove fine contaminants. These screens are to be cleaned/replaced weekly;</p> <p>(b) Vapour collection/ filtration to be used to capture VOCs/reduce odour emissions; and</p> <p>(c) Material from the pelletising lines must be transferred into bulka bags and placed in the finished material storage area as depicted in Schedule 1, Figure 2</p>
	Storage prior to offsite	<p>All storage of plastics must occur within the warehouse.</p> <p>The works approval holder must ensure that waste stockpiles within the warehouse are managed to the following specifications;</p> <p>(a) The volume of each stockpile must be maintained below 1,000 m<sup>3</sup></p> <p>(b) stockpiles must not exceed 4 m in height and 20 m in width;</p> <p>(c) stockpiles must have a minimum 6 m separation distance between other stockpiles;</p> <p>(d) Stockpiles may be located side by</p>

Waste type	Process(es)	Process limits and/or specifications
		<p>side if separated by a masonry wall; and</p> <p>(e) stockpiles must have a minimum 6 m separation distance from the walls of the warehouse.</p>

### Noise monitoring and validation

- 15.** Within 30 days of the commencement of time limited operations, the works approval holder must retain the services of a person qualified and experienced in the area of environmental noise assessment and who, by their qualifications and experience, is eligible to hold membership of the Australian Acoustical Society or the Australian Association of Acoustical Consultants to:
- (a) investigate the nature and extent of noise emissions from the premises;
  - (b) assess in accordance with the methodology required in the *Environmental Protection (Noise) Regulations 1997*, the compliance of the noise emissions from the prescribed premise, against the relevant assigned levels specified in those Regulations; and
  - (c) compile and submit to the works approval holder within three (3) months of the commencement of time limited operations a report in accordance with condition 15.
- 16.** A report prepared pursuant to condition 15 (c) is to include:
- (a) a description of the methods used for monitoring and/or modelling of noise emissions from the premises;
  - (b) details and the results of the investigation undertaken pursuant to condition 15(a);
  - (c) details and results of the assessment of the noise emissions from the premises, against the relevant assigned levels in the *Environmental Protection (Noise) Regulations 1997* undertaken pursuant to condition 15(b); and
  - (d) an assessment of noise levels against the most recent previous noise assessment.
- 17.** The works approval holder must submit to the CEO the report prepared pursuant to condition 15(c) within 14 days of receiving it. Where an assessment pursuant to condition 16(c) indicates that noise emissions do not comply with the relevant assigned levels in the *Environmental Protection (Noise) Regulations 1997*, the license holder must:
- (a) within 60 days of receiving an assessment report pursuant to condition 15(c) prepare a plan to ensure the undertaking of the licensed activity will no longer lead to any contravention of the *Environmental Protection (Noise) Regulations 1997*; and
  - (b) provide to the CEO, a copy of the plan prepared pursuant to condition 17 (a) within 30 days of its preparation.
- 18.** During commissioning and time limited operations, the works approval holder must ensure that the emission(s) specified in Table 5, are discharged only from the corresponding discharge point(s).

**Table 5: Authorised discharge points during time limited operations**

	Emission	Discharge point
1.	Treated wastewater.	Wastewater treatment plant outlet to sewer connection.

### Compliance reporting

- 19.** The works approval holder must submit to the CEO a report on the time limited operations within 30 calendar days of the completion date of time limited operations or 30 calendar days before the expiration date of the works approval, whichever is the sooner.
- 20.** The works approval holder must ensure the report required by condition 19 includes the following:
- (a) a summary of the time limited operations, including timeframes and amount of material processed;
  - (b) a summary of the environmental performance of all infrastructure as constructed or installed (as applicable).
  - (c) a review of performance and compliance against the conditions of the works approval and the Environmental Commissioning Report; and
  - (d) where the manufacturer's design specifications and the conditions of this works approval have not been met, what measures will the works approval holder take to meet them, and what timeframes will be required to implement those measures.

### Emissions and discharges

- 21.** The works approval holder must ensure that odour emitted from the premises does not unreasonably interfere with the health, welfare, convenience, comfort or amenity of any person who is not on the premises.
- 22.** The works approval holder shall take all reasonable and practical measures to prevent windblown waste from escaping from the premises and that any windblown waste that does escape is collected, on at least a weekly basis, and is appropriately contained.
- 23.** The works approval holder must immediately recover, or remove and dispose of, any liquid resulting from spills or leaks of liquid waste, whether inside or outside of bunded areas.
- 24.** The works approval must ensure that all material used for the recovery, removal, and/or disposal of environmentally hazardous materials is stored in an impermeable container prior to disposal at an appropriately authorised facility.
- 25.** The works approval holder must take all reasonable and practicable measures to prevent stormwater run-off becoming contaminated by the activities and operations undertaken at the premises.

### Security

- 26.** The works approval holder must:
- (a) implement security measures at the site to prevent as far as is practical unauthorised access to the site.
  - (b) undertake regular inspections of all security measures and repair damage as soon as practicable.

- (c) ensure the entrance gates and roller doors are closed and locked when the site is closed or unmanned.

### Fire and emergency management

- 27. The works approval holder must ensure that no waste is burnt on the premises.
- 28. The works approval holder must immediately notify the CEO of:
  - (a) any fire on the premises; and/or
  - (b) any accident, malfunction, or emergency which results or could result in the discharge of fire-fighting washwater or other wastes from the premises.
- 29. The works approval holder must develop and implement by 26 November 2026, a Fire and Emergency Management Plan for the premises including, but not limited to:
  - (a) an assessment of fire safety risk including identification of areas where a fire might occur and factors that might cause a fire;
  - (b) maintaining an emergency response plan with respect to fire, in accordance with AS 3745, and include drainage plans, maps and relevant MSDS information which is to be made available to fire responders at the entrance to the facility;
  - (c) how fires will be prevented, detected, responded to, suppressed, contained and controlled addressing all waste types stored on the premises;
  - (d) the location of any firefighting equipment and firefighting actions appropriate to the site;
  - (e) location of access points to the site;
  - (f) location of any hazardous or dangerous materials stored on site
  - (g) control and containment methods for firewater runoff on site
  - (h) ensure there are a sufficient number of fire hoses on the premises such that all areas of processing can be reached;
  - (i) minimise the size of stockpiles of recyclable materials that could cause a fire hazard;
  - (j) operate an on-site fire detection system, e.g. thermal detection cameras;
  - (k) ensure clear access to all stormwater drains is maintained at all times;
  - (l) how impacts to the environment and human health from fire events will be prevented and mitigated;
  - (m) ensure that pollution control equipment such as fire water booms, drain mats, or sandbags (or any other compatible absorbent material) be available on site, sufficient to divert run-off from, or prevent drainage into stormwater drains;
  - (n) ensure that any water generated from fire-fighting activities is removed from the Premises by a carrier licensed under the *Environmental Protection (Controlled Waste) Regulations 2004*.
- 30. The works approval holder must submit to the CEO a fire and emergency management plan as specified in condition 29 by 26 November 2026.

### Inputs and outputs

- 31. The works approval holder must record the total amount of waste accepted onto the premises, and removed from the premises for each waste type listed in Table 6, in the corresponding unit, and for each frequency, as set out in Table 6.

**Table 6: Input and outputs of the premises**

Material type	Unit	Frequency
Waste inputs	Tonnes	Each load arriving at the premises
Waste outputs		Each load leaving or rejected from the premises
Reprocessed plastic		Each load leaving the premises

## Records and reporting (general)

- 32.** The works approval holder must record the following information in relation to complaints received by the works approval holder (whether received directly from a complainant or forwarded to them by the Department or another party) about any alleged emissions from the premises:
- (a) the name and contact details of the complainant, (if provided);
  - (b) the time and date of the complaint;
  - (c) the complete details of the complaint and any other concerns or other issues raised; and
  - (d) the complete details and dates of any action taken by the works approval holder to investigate or respond to any complaint.
- 33.** The works approval holder must maintain accurate and auditable books including the following records, information, reports, and data required by this works approval:
- (a) the works conducted in accordance with condition 10
  - (b) any maintenance of infrastructure that is performed in the course of complying with condition 10, 14 and 29; and
  - (c) complaints received under condition 32.
- 34.** The books specified under condition 33 must:
- (d) be legible;
  - (e) if amended, be amended in such a way that the original version(s) and any subsequent amendments remain legible and are capable of retrieval;
  - (f) be retained by the works approval holder for the duration of the works approval; and
  - (g) be available to be produced to an inspector or the CEO as required.

## Definitions

In this works approval, the terms in Table 7 have the meanings defined.

**Table 7: Definitions**

Term	Definition
annual period	a 12 month period commencing from 1 July until 30 June of the immediately following year.
AS 3745	means <i>Australian Standard for the Planning for Emergencies in Facilities</i> published by Standards Australia.
AS 3780	means <i>Australian Standard for the storage and handling of corrosive substances</i> published by Standards Australia.
BOD	5-Day Biological Oxygen Demand
books	has the same meaning given to that term under the EP Act.
CEO	means Chief Executive Officer. CEO for the purposes of notification means: Director General Department administering the <i>Environmental Protection Act 1986</i> Locked Bag 10 Joondalup DC WA 6919 <a href="mailto:info@dwer.wa.gov.au">info@dwer.wa.gov.au</a>
Department	means the department established under section 35 of the <i>Public Sector Management Act 1994</i> and designated as responsible for the administration of Part V Division 3 of the EP Act.
discharge	has the same meaning given to that term under the EP Act.
emission	has the same meaning given to that term under the EP Act.
environmental commissioning	means the sequence of activities to be undertaken to test equipment integrity and operation, or to determine the environmental performance, of equipment and infrastructure to establish or test a steady state operation and confirm design specifications.
Environmental Commissioning Report	means a report on any commissioning activities that have taken place and a demonstration that they have concluded, with focus on emissions and discharges, waste containment, and other environmental factors.
Environmental Compliance Report	means a report to satisfy the CEO that the conditioned infrastructure and/or equipment has been constructed and/or installed in accordance with the works approval.

Term	Definition
EP Act	<i>Environmental Protection Act 1986 (WA).</i>
EP Regulations	<i>Environmental Protection Regulations 1987 (WA).</i>
HDPE	means high-density polyethylene
PET	means polyethylene terephthalate
premises	the premises to which this works approval applies, as specified at the front of this works approval and as shown on the premises map (Figure 1) in Schedule 1 to this works approval.
prescribed premises	has the same meaning given to that term under the EP Act.
PP	means polypropylene
time limited operations	refers to the operation of the infrastructure and equipment identified under this works approval that is authorised for that purpose, subject to the relevant conditions.
TSS	means Total Suspended Solids
waste	has the same meaning given to that term under the EP Act.
works approval	refers to this document, which evidences the grant of the works approval by the CEO under section 54 of the EP Act, subject to the conditions.
works approval holder	refers to the occupier of the premises being the person to whom this works approval has been granted, as specified at the front of this works approval.

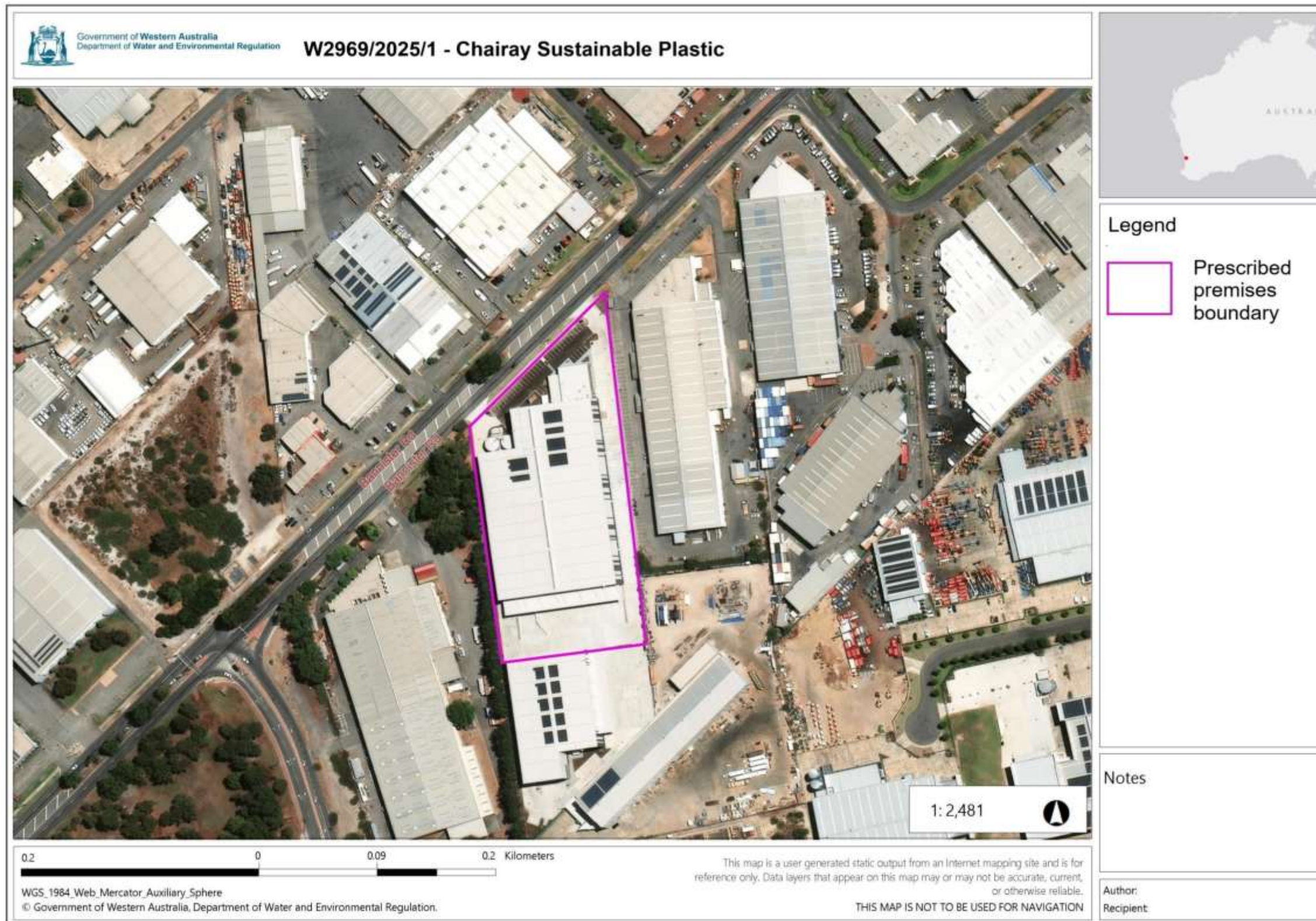
---

**END OF CONDITIONS**



## Schedule 1: Maps

### Premises map



**Figure 1: Map of the boundary of the prescribed premises**



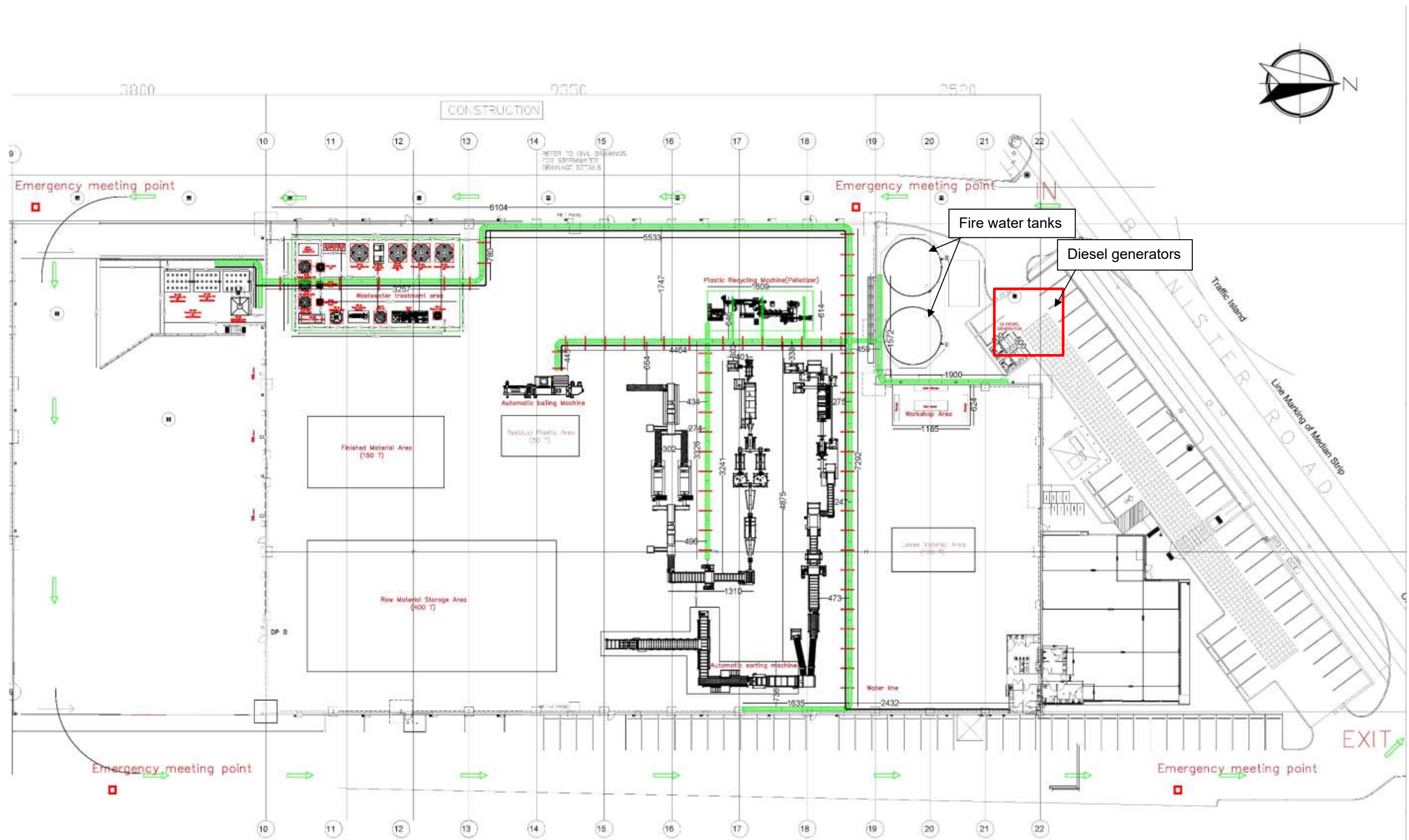


Figure 2: Warehouse floor plan

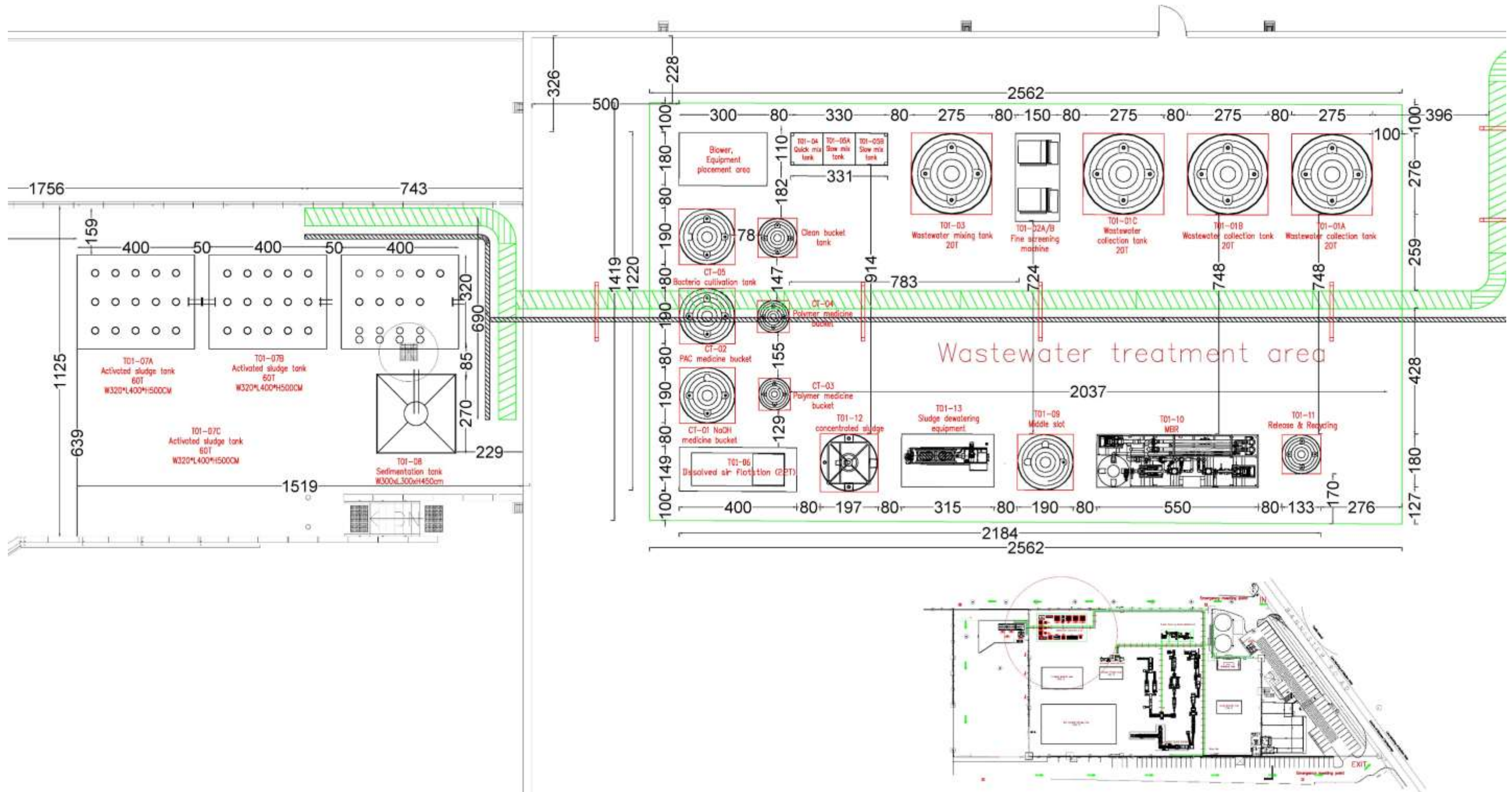


Figure 3: Wastewater treatment plant layout



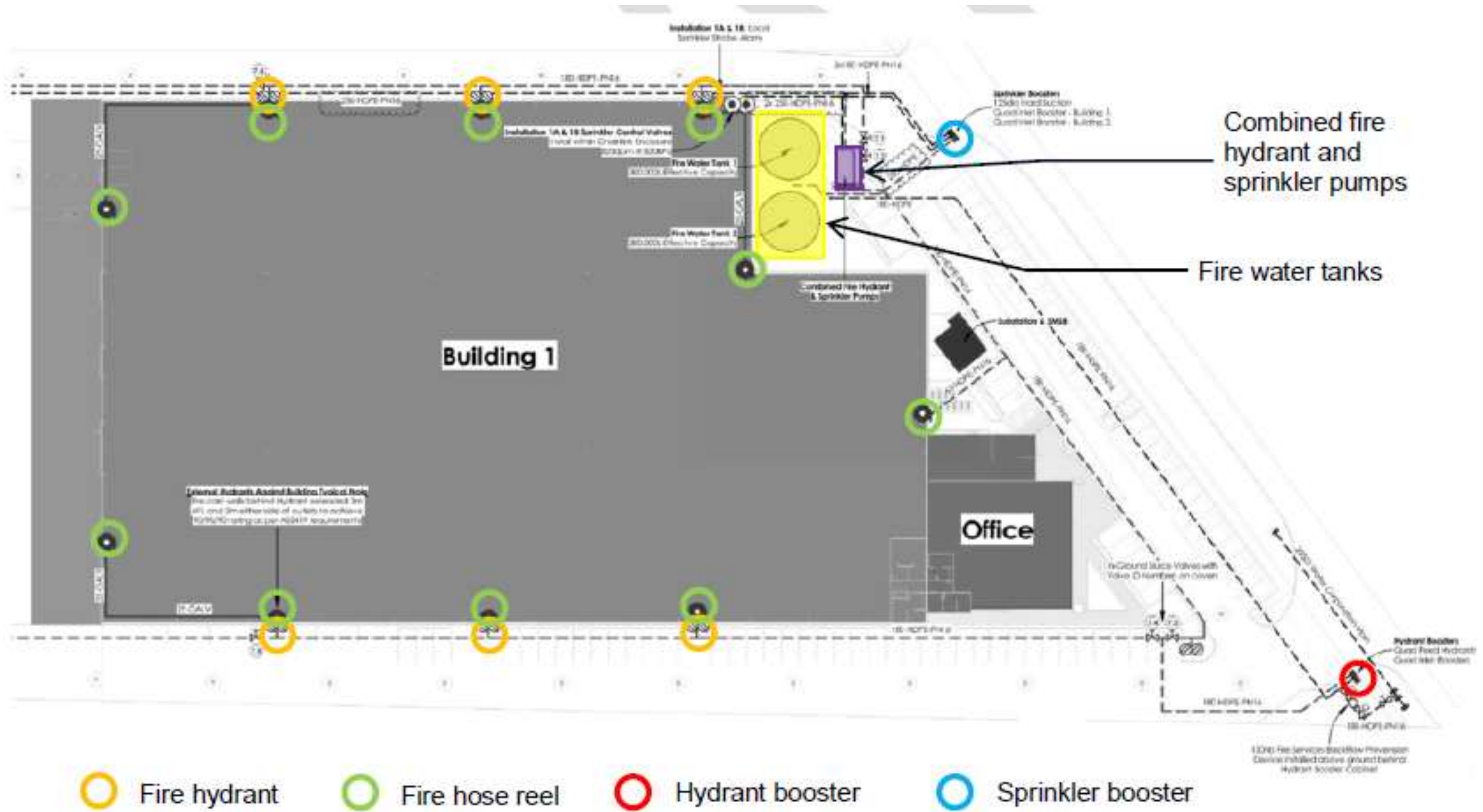


Figure 4: Firefighting equipment layout

## Schedule 2: Premises boundary

The corners of the premises boundary are the coordinates listed in Table 8.

**Table 8: Premises boundary coordinates (GDA2020)**

	<b>Easting</b>	<b>Northing</b>	<b>Zone</b>
1	396560.83290	6452081.20197	50
2	396646.06969	6452167.03318	50
3	396583.46700	6451929.98249	50
4	396674.75645	6451944.107388	50