



Works Approval

Works approval number W2957/2025/1

Works approval holder FMG Nullagine Pty Ltd

ACN 153 447 646

Registered business address Ground Level,
256 St Georges Terrace,
Perth WA 6000

DWER file number INS-0002957

Duration 9/10/2025 to 8/10/2030

Date of issue 9/10/2025

Premises details Nullagine Pilot Wind Farm

Legal description -
Mining tenements G46/9, L46/74, L46/82, L46/83,
L46/93, L46/95, L46/114, L46/119, M46/515,
M46/522, M46/535

NULLAGINE WA 6758

Prescribed premises category description (Schedule 1, <i>Environmental Protection Regulations 1987</i>)	Assessed production / design capacity
Category 12: Screening, etc. of material	600,000 tonnes per annual period
Category 54: Sewage facility	165 m ³ of treated sewage blended and 75 m ³ RO brine
Category 77: Concrete batching	50,000 tonnes per annual period

This works approval is granted to the works approval holder, subject to the attached conditions, on 9 October 2025, by:

Alana Kidd
Manager, Green Energy
an officer delegated under section 20 of the *Environmental Protection Act 1986* (WA)

Works approval history

Date	Reference number	Summary of changes
9/10/2025	W2957/2025/1	Works Approval granted

Interpretation

In this works approval:

- (a) the words ‘including’, ‘includes’ and ‘include’ in conditions mean “including but not limited to”, and similar, as appropriate;
- (b) where any word or phrase is given a defined meaning, any other part of speech or other grammatical form of that word or phrase has a corresponding meaning;
- (c) where tables are used in a condition, each row in a table constitutes a separate condition;
- (d) any reference to an Australian or other standard, guideline, or code of practice in this works approval:
 - (i) if dated, refers to that particular version; and
 - (ii) if not dated, refers to the latest version and therefore may be subject to change over time;
- (e) unless specified otherwise, any reference to a section of an Act refers to that section of the EP Act; and
- (f) unless specified otherwise, all definitions are in accordance with the EP Act.

NOTE: This works approval requires specific conditions to be met but does not provide any implied authorisation for other emissions, discharges, or activities not specified in this works approval.

Works approval conditions

The works approval holder must ensure that the following conditions are complied with:

Construction phase

Infrastructure and equipment

1. The works approval holder must:
 - (a) construct and/or install the infrastructure and/or equipment;
 - (b) in accordance with the corresponding design and construction / installation requirements; and
 - (c) at the corresponding infrastructure location; and
 as set out in Table 1.

Table 1: Design and construction / installation requirements

	Infrastructure	Design and construction / installation requirements	Infrastructure location
1.	Mobile Crushing and Screening Facility	(a) Cone Crushers (b) Jaw Crusher (c) Screener (vibrating or trommel screens) (d) Stacker (e) Feeder (f) Conveyor belt (g) Water misting systems (j) Diversion structures including bunds, channels, windrows, drains, collection and/or settling sump (k) Water cart used to manage dust during construction and operation	Figure 1
2.	WWTP	(a) WWTP will be composed of: <ol style="list-style-type: none"> i. Flow Balance Tanks (labelled as 'FB') ii. SBR modular units (labelled as 'EcoFarmer 250 Train') iii. Waste Sludge Tanks (labelled as 'WAS Tank') iv. Chlorine Contact Tanks (labelled as 'CCT') v. Wet Weather Storage Tanks (labelled as 'WWS') vi. RO Reject Tanks (labelled as 'Brine Tank') (b) Tanks fitted with alarms to warn in the event of high tank levels or failures. (c) All above ground infrastructure to be constructed on top of compacted earth base and surrounded by earthen diversion bunds to prevent stormwater entering to area; (d) Flow meters installed on the outlet of the WWTP discharge pipe to monitor outgoing volume; (e) All sewage storage and treatment tanks, transfer pipelines and conveyance infrastructure must be imperviable and free of leaks or defects; (f) WWTP able to treat sewage to the following discharge	Figure 1 and Figure 2

	Infrastructure	Design and construction / installation requirements	Infrastructure location
		<p>targets:</p> <ul style="list-style-type: none"> i. BOD5 < 20 mg/L ii. pH 6.5 – 8.5 iii. TSS < 30 mg/L iv. TDS < 2,8000 mg/L iv. TN < 20 mg/L v. TP < 7.5 mg/L vi. <i>Escherichia coli</i> < 1,000 CFU/100 mL vii. Residual free chlorine 0.2 – 2.0 mg/L <p>(g) Chemicals are stored in accordance with Australian Standard AS 3780:2008 <i>Storage and Handling of Corrosive Substances</i>;</p> <p>(h) Spills kits to be kept at the premises;</p> <p>(i) RO Brine Supply Pipeline connected to a volumetric flow meter to monitor the volume of RO brine delivered to the WWTP irrigation tanks.</p>	
3.	Irrigation Fields (1 and 2)	<p><u>General controls:</u></p> <ul style="list-style-type: none"> (a) Minimum distance from major watercourses of at least 100 m. (b) Buffer distance of 5 m between sprinklers and perimeter fence. <p><u>Irrigation field 1:</u></p> <ul style="list-style-type: none"> (a) 7.5 ha irrigation spray field with sprinkler units; (b) Irrigation spray field is to be fully enclosed within a fenced area; (c) Warning signage fixed to all sides of the fence. <p><u>Irrigation field 2:</u></p> <ul style="list-style-type: none"> (a) 5.7 ha irrigation spray field with sprinkler units; (b) Irrigation spray field to be fully enclosed within fenced area; (c) Warning signage fixed to all sides of the fence. 	Figure 1
4.	Mobile concrete batching plant and ancillary infrastructure	<p><u>General controls:</u></p> <ul style="list-style-type: none"> (a) Diversion structures including bunds, channels, and drains to be installed prior to commencement of construction activities. (b) Plant is located 100 m or more away from major surface water bodies. (c) Water cart to be used to manage all dust during construction/ operation. (d) Sediment basins are to be installed to capture and manage stormwater in the work area. (e) All stormwater drainage and wash-down water must be diverted to designated collection points and sedimentation traps for treatment prior to re-use or release to the surrounding environment in accordance 	The mobile concrete batch plant will be in the areas shown in Figure 1

	Infrastructure	Design and construction / installation requirements	Infrastructure location
		<p>with Australian and New Zealand Guidelines for Fresh and Marine Water Quality (ANZECC/ARMCANZ, 2000) and WQPN 68 - Mechanical Equipment Washdown water quality limits. The settlement ponds will be lined.</p> <p>(f) Weigh hoppers and conveyors (cement, sand and aggregate):</p> <p>i. Sprinklers will be installed on the material stockpiles and guards fitted to conveyors and chutes.</p> <p>(g) Cement silo(s) and cement storage:</p> <p>i. Dust management measures will be implemented in accordance with the Environmental Protection (Concrete Batching and Cement Product Manufacturing) Regulations 1998.</p>	

Compliance reporting

2. The works approval holder must within 30 calendar days of each item of infrastructure or equipment required by condition 1 being constructed and/or installed:
 - (a) undertake an audit of their compliance with the requirements of condition 1; and
 - (b) prepare and submit to the CEO an Environmental Compliance Report on that compliance.
3. The Environmental Compliance Report required by condition 2, must include as a minimum the following:
 - (a) certification by an engineer that the items of infrastructure or component(s) thereof, as specified in condition 1, have been constructed in accordance with the relevant requirements specified in condition 1;
 - (b) as constructed plans and a detailed site plan for each item of infrastructure or component of infrastructure specified in condition 1; and
 - (c) be signed by a person authorised to represent the works approval holder and contains the printed name and position of that person.

Environmental commissioning phase

Environmental commissioning requirements and emission limits

4. The works approval holder may only commence environmental commissioning of an item of infrastructure identified in condition 1 once the Environmental Compliance Report has been submitted for that item of infrastructure in accordance with condition 2 this works approval.
5. Any environmental commissioning activities undertaken for an item of infrastructure specified in Table 2 may only be carried out:
 - (a) in accordance with the corresponding commissioning requirements; and
 - (b) for the corresponding authorised commissioning duration.

Table 2: Environmental commissioning requirements

	Infrastructure	Commissioning requirements	Authorised commissioning duration
1	WWTP and pipeline	(a) Volumetric flow meters must be maintained on the WWTP, RO brine pipeline and spray irrigation field. (b) Sludge must be contained within sludge tanks prior to removal by a licensed controlled waste carrier for disposal to a licenced controlled waste disposal facility. (c) High tank level alarms and failures alarms are maintained operational. (d) Spills of untreated wastewater or chemicals outside of a vessel/container must be cleaned up immediately.	A period not exceeding 90 calendar days in aggregate
2	Irrigation Fields (1 and 2)	(a) No more than 240 m ³ /day of blended effluent may be applied to the designated spray irrigation areas; (b) Irrigation must be managed to prevent ponding and pooling of blended effluent on the ground surface of the irrigation spray field; (c) No blended effluent is permitted to run off or discharge beyond the irrigation spray field. (d) No raw / undiluted brine is to be discharged to the irrigation area.	A period not exceeding 90 calendar days in aggregate

6. During environmental commissioning, the works approval holder must ensure that the emissions specified in Table 3, are discharged only from the corresponding discharge point and only to the corresponding discharge point location.

Table 3: Authorised discharge points during commissioning

	Emission	Discharge point	Discharge point location
1	Treated effluent blended with RO brine as soon as practicable. No raw brine is to be discharged undiluted.	Irrigation fields	Figure 1

Monitoring during environmental commissioning

7. The works approval holder must monitor emissions during environmental commissioning in accordance with Table 4.

Table 4: Emissions and discharge monitoring during environmental commissioning

Discharge point	Monitoring location	Parameter	Frequency	Averaging Period	Unit	Method
Irrigation field	Flow meter to irrigation field	Cumulative flow volume discharged to sprayfield ¹	Continuous	N/A	m³/day	Flow meter device
	WWTP outlet (final effluent tank)	<i>Escherichia coli</i>	Weekly	Spot sample	cfu / 100mL	AS/NZS 5667.1
		Biochemical Oxygen Demand			mg/L	AS/NZS 5667.10
		Total Suspended Solids			mg/L	
		Total Dissolved Solids			mg/L	
		Total nitrogen			mg/L	
		Total phosphorus			mg/L	
		Residual free chlorine ¹	Daily or continuous online		mg/L	
		pH ¹			N/A	

Note 1: In-field non-NATA accredited analysis permitted

8. The works approval holder must ensure that all non-continuous sampling and analysis undertaken pursuant to condition 7 is undertaken by a holder of a current accreditation from the NATA for the methods of sampling and analysis relevant to the corresponding relevant parameter.
9. The works approval holder must record the results of all monitoring activity required by condition 7.

Environmental commissioning reporting

10. The works approval holder must submit to the CEO an Environmental Commissioning Report within 60 calendar days of the completion date of environmental commissioning for each item of infrastructure specified in Table 2.
11. The works approval holder must ensure the Environmental Commissioning Report required by condition 10 of this works approval includes the following:
- a summary of the environmental commissioning activities undertaken, including timeframes;
 - a summary of the environmental performance of each item of infrastructure or equipment as constructed or installed (as applicable), which at a minimum includes records detailing the:
 - commissioning of the infrastructure; and
 - testing of the infrastructure.

- (c) the monitoring results for the sewage treatment facilities recorded in accordance with condition 7 with a comparison against the performance targets specified in condition 1;
- (d) copies of laboratory reports for the monitoring results recorded in accordance with condition 8;
- (e) a review of the works approval holder's performance and compliance against the conditions of this works approval; and
- (f) where they have not been met, measures proposed to meet the manufacturer's design specifications and the conditions of this works approval, together with timeframes for implementing the proposed measures.

Time limited operations phase

Commencement and duration

12. The works approval holder may only commence time limited operations for an item of infrastructure identified in condition 1:
 - (a) where the item of infrastructure is not authorised to undertake environmental commissioning, the Environmental Compliance Report as required by condition 2 has been submitted by the works approval holder for that item of infrastructure; and
 - (b) where the item of infrastructure is authorised to undertake environmental commissioning and the Environmental Commissioning Report for that item of infrastructure as required by condition 10 has been submitted by the works approval holder.
13. The works approval holder may commence time limited operations for an item of infrastructure specified in condition 14 (as applicable):
 - (a) at any time, dependent on meeting the requirements of condition 12;
 - (b) for a period not exceeding 180 calendar days from the day on which time limited operations commenced for that item of infrastructure; or
 - (c) until such time as a licence for that item of infrastructure is granted in accordance with Part V of the *Environmental Protection Act 1986*, if one is granted before the end of the period specified in condition 13(b).

Time limited operations requirements and emission limits

14. During time limited operations, the works approval holder must ensure that the premises infrastructure and equipment listed in Table 5 in accordance with the corresponding operational requirement set out in Table 5.

Table 5: Infrastructure and equipment requirements during time limited operations

	Infrastructure	Time limited operations requirements	Authorised time limited operations duration
1	WWTP and pipeline	<p>(a) Volumetric flow meters must be maintained on the WWTP, RO brine pipeline and spray irrigation field;</p> <p>(b) Sludge must be contained within sludge tanks prior to removal by a licensed controlled waste carrier for disposal to a licenced controlled waste disposal facility;</p> <p>(c) High tank level alarms and failures alarms are maintained operational.</p> <p>(d) Spills of untreated wastewater or chemicals outside of a vessel/container must be cleaned up as soon as practicable.</p> <p>(e) Pipeline corridor will be visually inspected for leaks on a weekly basis.</p> <p><u>RO brine pipeline:</u></p> <p>(a) No more than 75 m³/day of RO brine is supplied to the WWTP.</p> <p>(b) Volumetric flow metres are maintained to monitor daily volume of RO brine delivered to the irrigation spray field.</p>	180 days
2	Irrigation Fields (1 and 2)	<p>(a) No more than 240 m³/day of blended effluent may be applied to the designated spray irrigation areas;</p> <p>(b) Irrigation must be managed to prevent ponding and pooling of blended effluent on the ground surface of the irrigation spray fields;</p> <p>(c) No blended effluent is permitted to run off or discharge beyond the irrigation spray fields;</p> <p>(d) Bunds and diversion drains must be maintained and repaired as required to ensure uncontaminated stormwater is directed away from, and treated wastewater is contained within, the irrigation spray fields.</p>	180 days
3	Mobile crushing and screening facility (MCSF)	<p>(a) Water cart used to manage dust during operation.</p> <p>(b) Water sprays operational during material processing and when visible dust is produced.</p> <p>(c) Diversion structures including bunds, channels, windrows and drains are maintained to divert stormwater, washdown and spillage water runoff from the MCSF work area to a collection and/or settling sump.</p> <p>(d) Collection and/or settling sump is maintained with capacity to store washdown and spillage water runoff from the MCSF working areas.</p>	180 days
4	Mobile concrete batching plant and ancillary infrastructure	Must demonstrate compliance with the requirements of the Environmental Protection (Concrete Batching and Cement Manufacturing) Regulations 1998.	180 days

15. During time limited operations, the works approval holder must ensure that each emission specified in Table 6, are discharged only from the corresponding discharge point location.

Table 6: Authorised discharge points during time limited operations

	Emission	Discharge point	Discharge point location
1	Treated effluent blended with RO brine. No raw brine is to be discharged undiluted.	Irrigation sprayfields	Figure 1

Monitoring during time limited operations

16. The works approval holder must monitor emissions during time limited operations in accordance with Table 7.

Table 7: Emissions and discharge monitoring during time limited operations

Discharge point	Monitoring location	Parameter	Frequency	Averaging Period	Unit	Method
Irrigation fields	Flow meter to irrigation fields	Cumulative flow volume discharged to sprayfields ¹	Continuous	N/A	m ³ /day	Flow meter device
	WWTP outlet (final effluent tank)	<i>Escherichia coli</i>	Monthly	Spot sample	cfu / 100mL	AS/NZS 5667.1
		Biochemical Oxygen Demand			mg/L	AS/NZS 5667.10
		Total Suspended Solids			mg/L	
		Total Dissolved Solids			mg/L	
		Total nitrogen			mg/L	
		Total phosphorus			mg/L	
		Residual free chlorine ¹	Daily or continuous online		mg/L	
		pH ¹			N/A	

Note 1: In-field non-NATA accredited analysis permitted

17. All sample analysis must be undertaken by laboratories with current NATA accreditation for the relevant parameters, unless otherwise specified in Table 7.
18. The works approval holder must record the results of all monitoring activity required by condition 16.

Compliance reporting

19. The works approval holder must submit to the CEO a report on the time limited operations within 30 calendar days of the completion date of time limited operations or 30 calendar days before the expiration date of the works approval, whichever is the sooner.

- 20.** The works approval holder must ensure the report required by condition 19 includes the following:
- (a) a summary of the time limited operations, including start-date, timeframes and amount of sewage waste and material processed (category 12);
 - (b) quality and quantity of treated effluent discharged to the irrigation spray field.
 - (c) monitoring results for the sewage treatment facilities recorded in accordance with condition 16 with a comparison against the performance targets specified in condition 1;
 - (d) copies of laboratory reports for monitoring results recorded in accordance with condition 16;
 - (e) a review of performance and compliance against the conditions of the works approval; and
 - (f) where the manufacturer's design specifications and the conditions of this works approval have not been met, what measures will the works approval holder take to meet them, and what timeframes will be required to implement those measures.

Records and reporting (general)

- 21.** The works approval holder must record the following information in relation to complaints received by the works approval holder (whether received directly from a complainant or forwarded to them by the Department or another party) about any alleged emissions from the premises:
- (a) the name and contact details of the complainant, (if provided);
 - (b) the time and date of the complaint;
 - (c) the complete details of the complaint and any other concerns or other issues raised; and
 - (d) the complete details and dates of any action taken by the works approval holder to investigate or respond to any complaint.
- 22.** The works approval holder must maintain accurate and auditable books including the following records, information, reports, and data required by this works approval:
- (a) the works conducted in accordance with condition 1;
 - (b) any maintenance of infrastructure that is performed in the course of complying with condition 1;
 - (c) monitoring programmes undertaken in accordance with condition(s) 7 and 16; and
 - (d) complaints received under condition 21.
- 23.** The books specified under condition 22 must:
- (a) be legible;
 - (b) if amended, be amended in such a way that the original version(s) and any subsequent amendments remain legible and are capable of retrieval;
 - (c) be retained by the works approval holder for the duration of the works approval; and
 - (d) be available to be produced to an inspector or the CEO as required.

Definitions

In this works approval, the terms in Table 8 have the meanings defined.

Table 8: Definitions

Term	Definition
ACN	Australian Company Number.
AS/NZS 5667.1	means the Australian Standard AS/NZS 5667.1 <i>Water Quality – Sampling – Guidance on the design of sampling programs, sampling techniques and the preservation and handling of samples</i> .
AS/NZS 5667.10	means the Australian Standard AS/NZS 5667.10 <i>Water Quality – Sampling – Guidance on sampling of waste waters</i> .
books	has the same meaning given to that term under the EP Act.
CEO	means Chief Executive Officer. CEO for the purposes of notification means: Director General Department administering the <i>Environmental Protection Act 1986</i> Locked Bag 10 Joondalup DC WA 6919 info@dwer.wa.gov.au
cfu/100 mL	colony forming units per 100 millilitres.
Department	means the department established under section 35 of the <i>Public Sector Management Act 1994</i> and designated as responsible for the administration of Part V Division 3 of the EP Act.
discharge	has the same meaning given to that term under the EP Act.
emission	has the same meaning given to that term under the EP Act.
environmental commissioning	means the sequence of activities to be undertaken to test equipment integrity and operation, or to determine the environmental performance, of equipment and infrastructure to establish or test a steady state operation and confirm design specifications.
Environmental Commissioning Report	means a report on any commissioning activities that have taken place and a demonstration that they have concluded, with focus on emissions and discharges, waste containment, and other environmental factors.
Environmental Compliance Report	means a report to satisfy the CEO that the conditioned infrastructure and/or equipment has been constructed and/or installed in accordance with the works approval.

Term	Definition
EP Act	<i>Environmental Protection Act 1986 (WA).</i>
EP Regulations	<i>Environmental Protection Regulations 1987 (WA).</i>
premises	the premises to which this licence applies, as specified at the front of this licence and as shown on the premises map (Figure 1) in Schedule 1 to this works approval.
prescribed premises	has the same meaning given to that term under the EP Act.
time limited operations	refers to the operation of the infrastructure and equipment identified under this works approval that is authorised for that purpose, subject to the relevant conditions.
waste	has the same meaning given to that term under the EP Act.
works approval	refers to this document, which evidences the grant of the works approval by the CEO under section 54 of the EP Act, subject to the conditions.
works approval holder	refers to the occupier of the premises being the person to whom this works approval has been granted, as specified at the front of this works approval.

END OF CONDITIONS

Schedule 1: Maps

Premises map

The boundary of the prescribed premises is shown in the map below (Figure 1).

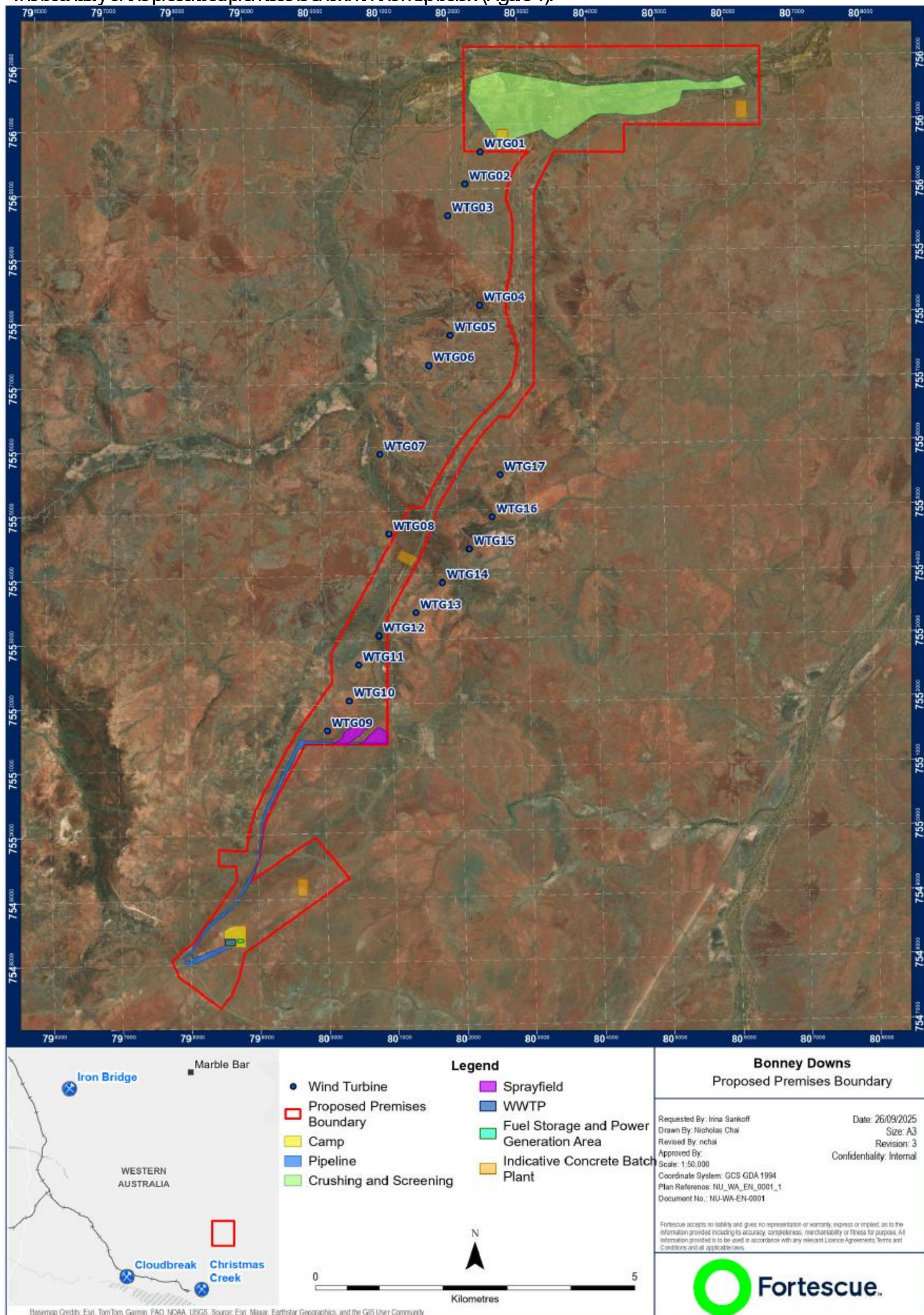


Figure 1: Map of the boundary of the prescribed premises

W2957/2025/1 (9/10/2025)
 IR-T05 Works approval template (v6.0) (September 2022)

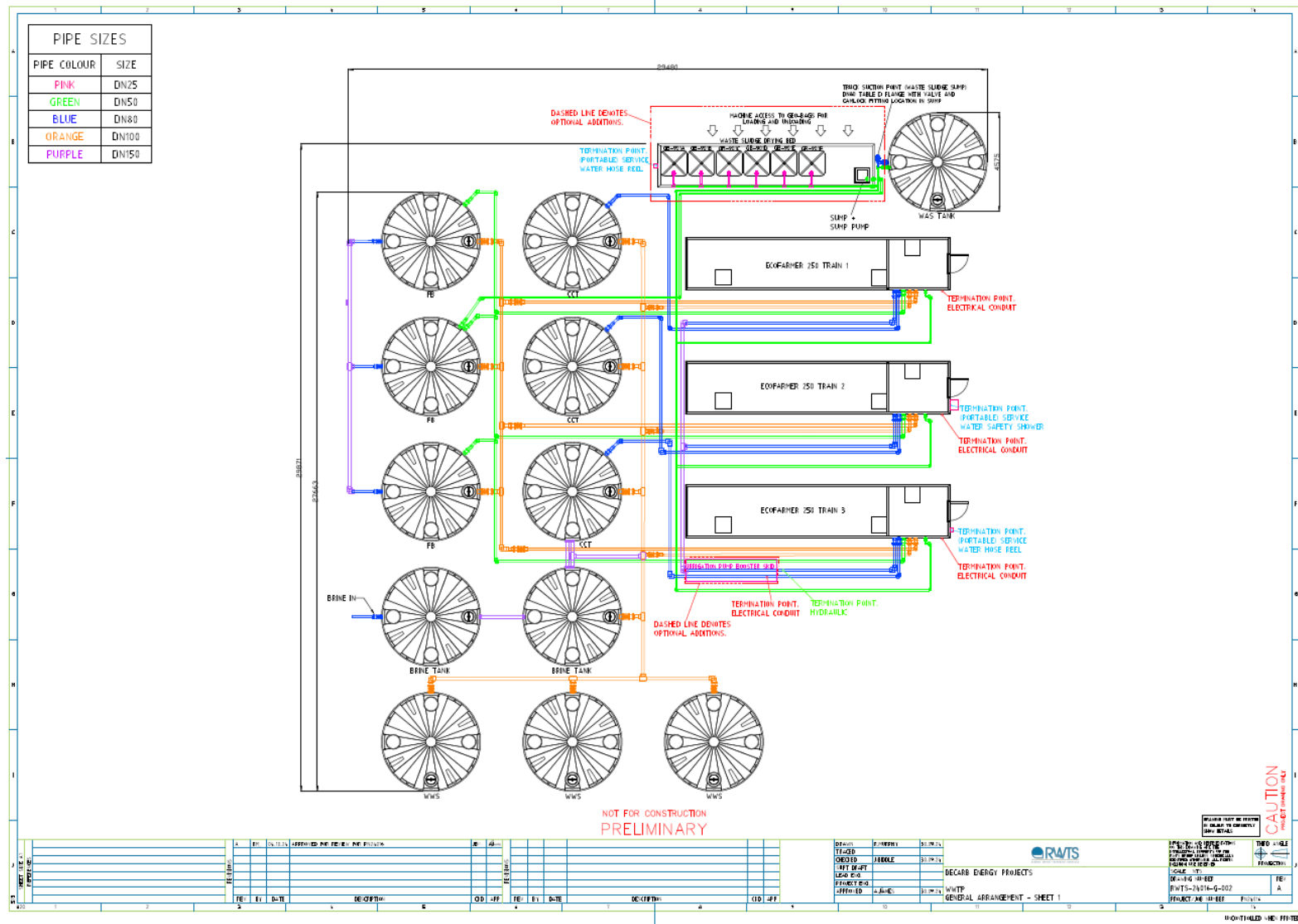


Figure 2: Indicative WWTP arrangement

W2957/2025/1 (9/10/2025)

IR-T05 Works approval template (v6.0) (September 2022)