



Works Approval

Works approval number	W6967/2024/1
Works approval holder	Focus Operations Pty Ltd
ACN	115 821 255
Registered business address	Level 5, 8 St Georges Terrace Perth WA 6000
Application Number	APP-0026159
Duration	28/02//2025 to 28/02/2028
Date of issue	28/02//2025
Premises details	Three Mile Hill Gold Project COOLGARDIE WA 6429 Legal description - Within the Mining Tenements M15/1114, M15/154, M15/645, M15/646, M15/660, M15/958, M15/1294, M15/1432, M15/1788 and L15/161 As depicted in Schedule 1

Prescribed premises category description (Schedule 1, <i>Environmental Protection Regulations 1987</i>)	Assessed design capacity
Category 6: Mine dewatering	475,000 tonnes per year
Category 12: Screening etc. of material	100,000 tonnes per year

This works approval is granted to the works approval holder, subject to the attached conditions, on 28 February 2025, by:

Christine Pustkuchen
MANAGER, RESOURCE INDUSTRIES
INDUSTRY REGULATION (STATEWIDE DELIVERY)
an officer delegated under section 20 of the *Environmental Protection Act 1986* (WA)

Works approval history

Date	Reference number	Summary of changes
28/02/2025	W6967/2024/1	Works approval granted.

Interpretation

In this works approval:

- (a) the words 'including', 'includes' and 'include' in conditions mean "including but not limited to", and similar, as appropriate;
- (b) where any word or phrase is given a defined meaning, any other part of speech or other grammatical form of that word or phrase has a corresponding meaning;
- (c) where tables are used in a condition, each row in a table constitutes a separate condition;
- (d) any reference to an Australian or other standard, guideline, or code of practice in this works approval:
 - (i) if dated, refers to that particular version; and
 - (ii) if not dated, refers to the latest version and therefore may be subject to change over time;
- (e) unless specified otherwise, any reference to a section of an Act refers to that section of the EP Act; and
- (f) unless specified otherwise, all definitions are in accordance with the EP Act.

NOTE: This works approval requires specific conditions to be met but does not provide any implied authorisation for other emissions, discharges, or activities not specified in this works approval.

Works approval conditions

The works approval holder must ensure that the following conditions are complied with:

Construction phase

Infrastructure and equipment

1. The works approval holder must:
 - (a) construct and install the infrastructure or equipment;
 - (b) in accordance with the corresponding design and construction requirements; and
 - (c) at the corresponding infrastructure location
 as set out in Table 1.

Table 1: Design and construction requirements

	Infrastructure	Design and construction requirements	Infrastructure location
1.	Dewatering pipeline from Alicia and Dreadnought pits to Brilliant Pit	<ul style="list-style-type: none"> High density Poly-ethylene (HDPE) pipelines to be installed from Alicia and Dreadnought pits to Mine water ponds, and from there to Brilliant Pit; Pipelines must be contained within V-drains with adequate capacity to contain any spill for a period equal to the time between routine inspections; Scour pits to be placed at low points along the pipeline route with adequate capacity to contain any spill for a period equal to the time between routine inspections; Dust suppression using water carts must be undertaken during construction / installation. 	Labelled as 'Proposed pipeline route', as depicted in Schedule 1: Map, Figure 1.
	2 x Mine water ponds	<ul style="list-style-type: none"> Constructed with raised embankments with 2:1 batter; Lined with HDPE to achieve a permeability of less than 1×10^{-9} m/s; Constructed to allow capture for 1:100 Annual Exceedance Probability (AEP) rainfall events; Flow meter must be installed at mine water pond to quantify volume of water released to Brilliant pit; Security fencing to be installed around the toe of the mine water ponds to prevent fauna access; Dust suppression using water carts must be undertaken during construction / installation. 	Labelled as 'Mine water pond', as depicted in Schedule 1: Map, Figure 1.
2.	Mobile Crushing and	<ul style="list-style-type: none"> Plant to be installed either within the 	Labelled as 'Crushing

	Screening Plant	<p>Dreadnought or Big Blow Waste Rock Landforms footprints;</p> <ul style="list-style-type: none"> • A water cart must be present during installation of the plant to manage dust emissions; • Stormwater management infrastructure to be installed to divert clean stormwater around crushing and screening plant operating area and to capture and retain potentially contaminated or contaminated stormwater on-site. 	and screening area' as depicted in Schedule 1: Map, Figure 1.
--	-----------------	--	---

Compliance reporting

2. The works approval holder must within 30 calendar days of an item of infrastructure required by condition 1 being constructed and/or installed:
 - (a) undertake an audit of their compliance with the requirements of condition 1; and
 - (b) prepare and submit to the CEO an Environmental Compliance Report on that compliance.
3. The Environmental Compliance Report required by condition 2, must include as a minimum the following:
 - (a) certification by a suitably qualified professional that the items of infrastructure or component(s) thereof, as specified in condition 1, have been constructed in accordance with the relevant requirements specified in condition 1;
 - (b) as constructed plans or photographs and a detailed site plan for each item of infrastructure or component of infrastructure specified in condition 1; and
 - (c) be signed by a person authorised to represent the works approval holder and contains the printed name and position of that person.

Time limited operations phase

Commencement and duration

4. The works approval holder may only commence time limited operations for an item of infrastructure identified in condition 1 where the Environmental Compliance Report as required by condition 2 has been submitted by the works approval holder for that item of infrastructure.
5. The works approval holder may conduct time limited operations for an item of infrastructure specified in condition 6 (as applicable):
 - (a) for a period not exceeding 180 calendar days from the day the works approval holder meets the requirements of condition 4 for that item of infrastructure; or
 - (b) until such time as a licence for that item of infrastructure is granted in accordance with Part V of the *Environmental Protection Act 1986*, if one is granted before the end of the period specified in condition 5(a).

Time limited operations requirements and emission limits

6. During time limited operations, the works approval holder must ensure that the premises infrastructure and equipment listed in Table 2 and located at the corresponding infrastructure location is maintained and operated in accordance with

the corresponding operational requirement set out in Table 2.

Table 2: Infrastructure and equipment requirements during time limited operations

	Site infrastructure and equipment	Operational requirement	Infrastructure location
1.	Dewatering pipeline from Alicia and Dreadnought pits to Brilliant Pit	<ul style="list-style-type: none"> Daily visual inspection of the pipeline and the secondary containment to occur to ensure pipeline integrity and secondary containments are not at risk of overflowing; A minimum freeboard of 4 m below crest level to be maintained at Brilliant pit 	Labelled as 'Proposed pipeline route, as depicted in Schedule 1: Map, Figure 1.
	2 x Mine water ponds	<ul style="list-style-type: none"> An operational freeboard of at least 300 mm must be maintained; Integrity of the HDPE liner must be maintained. 	Labelled as 'Mine water pond', as depicted in Schedule 1: Map, Figure 1.
2.	Mobile Crushing and Screening Plant	<ul style="list-style-type: none"> Plant must be operated only either within the Dreadnought or Big Blow Waste Rock Landforms footprints; Plant to be maintained in accordance with manufactures specifications; Crusher feed must be wetted down prior to the crushing process to minimise dust emission; A water cart must be present at all times during operation to manage dust emissions; Potentially contaminated or contaminated stormwater from within the crushing and screening operating areas is to be captured and prevented from being released into the environment. 	Labelled as 'Crushing and screening area' as depicted in Schedule 1: Map, Figure 1.

7. During time limited operations, the works approval holder must ensure that the discharges listed in Table 3 are discharged from the corresponding points and only at the corresponding point location in accordance with the requirements set out in Table 3.

Table 3: Authorised discharge points during time limited operation

Discharge point reference	Discharge source and description	Discharge point location
Brilliant pit	Mine dewater from Alicia and Dreadnought pits (via mine water ponds).	Labelled as 'Brilliant pit' as depicted in Schedule 1: Map, Figure 1.

Monitoring during time limited operations

8. During time limited operation, the works approval holder must ensure that:
- all water samples are collected and preserved in accordance with AS/NZS 5667.1; and

- (b) all laboratory samples are submitted to a laboratory with current National Association of Testing Authorities (NATA) accreditation for the parameters to be measured unless indicated otherwise in relevant table.

9. During time limited operation, the works approval holder must ensure that:

- (a) monitoring is undertaken in each monthly period such that there are at least 15 days in between the days on which samples are taken in successive months; and
- (b) monitoring is undertaken in each quarterly period such that there are at least 45 days in between the days on which samples are taken in successive quarters.

10. During time limited operation, the works approval holder must monitor discharges:

- (a) at the corresponding monitoring point;
- (b) for the corresponding parameter;
- (c) at the corresponding frequency;
- (d) for the corresponding method;
- (e) in the corresponding unit, and at the corresponding location;

as set out in Table 4.

Table 4: Monitoring of discharges during time limited operation

Monitoring point	Parameter	Unit	Method	Frequency	Location
Discharge point at Brilliant pit (prior to discharge)	pH ¹	pH unit	Spot sample	Monthly during time limited operation.	Brilliant pit as shown in Schedule 1: Map, Figure 1.
	Electrical conductivity ¹	µS/cm			
	Total dissolved solids (TDS)	mg/L		Quarterly during time limited operation.	
	Dissolved metals and metalloids: <ul style="list-style-type: none"> • arsenic (As); • antimony (Sb); • cadmium (Cd); • chromium (total) (Cr); • cobalt (Co); • copper (Cu); • iron (Fe); • lead (Pb); • magnesium (Mg); • mercury (Hg); • molybdenum (Mo); • nickel (Ni); • selenium (Se); • thallium (Tl); and • zinc (Zn). 	mg/L			
	Major ions: <ul style="list-style-type: none"> • bicarbonate (HCO₃⁻); 	mg/L		Quarterly during time limited	

	<ul style="list-style-type: none"> • carbonate (CO_3^{2-}); • calcium (Ca); • chloride (Cl); • nitrate (NO_3^-); • potassium (K); • sodium (Na); and • sulfate (SO_4^{2-}). 			operation.	
--	--	--	--	------------	--

Note 1: In-field non-NATA-accredited analysis permitted.

Compliance reporting

11. The works approval holder must submit to the CEO a report on the time limited operations within 30 calendar days of the completion date of time limited operations.
12. The works approval holder must ensure the report required by condition 11 includes the following:
 - (a) a summary of the time limited operations, including timeframes and amount of mine dewater discharged to the environment (including dust suppression) and amount of waste rocks went through crushing and screening process;
 - (b) monitoring results obtained during time limited operations under condition 10
 - (c) a review of performance and compliance against the condition 6 of the works approval; and
 - (d) where the manufacturer's design specifications and the conditions of this works approval have not been met, what measures will the works approval holder take to meet them, and what timeframes will be required to implement those measures.

Records and reporting (general)

13. The works approval holder must record the following information in relation to complaints received by the works approval holder (whether received directly from a complainant or forwarded to them by the Department or another party) about any alleged emissions from the premises:
 - (a) the name and contact details of the complainant, (if provided);
 - (b) the time and date of the complaint;
 - (c) the complete details of the complaint and any other concerns or other issues raised; and
 - (d) the complete details and dates of any action taken by the works approval holder to investigate or respond to any complaint.
14. The works approval holder must maintain accurate and auditable books including the following records, information, reports, and data required by this works approval:
 - (a) the works conducted in accordance with condition 1;
 - (b) any maintenance of infrastructure that is performed in the course of complying with condition 6; and
 - (c) complaints received under condition 13.

- 15.** The books specified under condition 14 must:
- (a) be legible;
 - (b) if amended, be amended in such a way that the original version(s) and any subsequent amendments remain legible and are capable of retrieval;
 - (c) be retained by the works approval holder for the duration of the works approval; and
 - (d) be available to be produced to an inspector or the CEO as required.

Definitions

In this works approval, the terms in Table 5 have the meanings defined.

Table 5: Definitions

Term	Definition
AEP	Annual Exceedance Probability
annual period	a 12-month period commencing from the date of issue of this works approval until the same day and month of the immediately following year.
books	has the same meaning given to that term under the EP Act.
CEO	means Chief Executive Officer. CEO for the purposes of notification means: Director General Department administering the <i>Environmental Protection Act 1986</i> Locked Bag 10 Joondalup DC WA 6919 info@dwer.wa.gov.au
Department	means the department established under section 35 of the <i>Public Sector Management Act 1994</i> and designated as responsible for the administration of Part V Division 3 of the EP Act.
discharge	has the same meaning given to that term under the EP Act.
emission	has the same meaning given to that term under the EP Act.
Environmental Compliance Report	means a report to satisfy the CEO that the conditioned infrastructure and/or equipment has been constructed and installed in accordance with the works approval.
EP Act	<i>Environmental Protection Act 1986</i> (WA).
EP Regulations	<i>Environmental Protection Regulations 1987</i> (WA).
HDPE	Means High density Poly-ethylene.
NATA	National Association of Testing Authorities.
premises	the premises to which this licence applies, as specified at the front of this licence and as shown on the premises map in Schedule 1 to this works approval.
prescribed premises	has the same meaning given to that term under the EP Act.
time limited operations	refers to the operation of the infrastructure and equipment identified under this works approval that is authorised for that purpose, subject to the relevant conditions.

works approval	refers to this document, which evidences the grant of the works approval by the CEO under section 54 of the EP Act, subject to the conditions.
works approval holder	refers to the occupier of the premises being the person to whom this works approval has been granted, as specified at the front of this works approval.

END OF CONDITIONS

Schedule 1: Maps

Premises map

The boundary of the prescribed premises is shown in the map below.

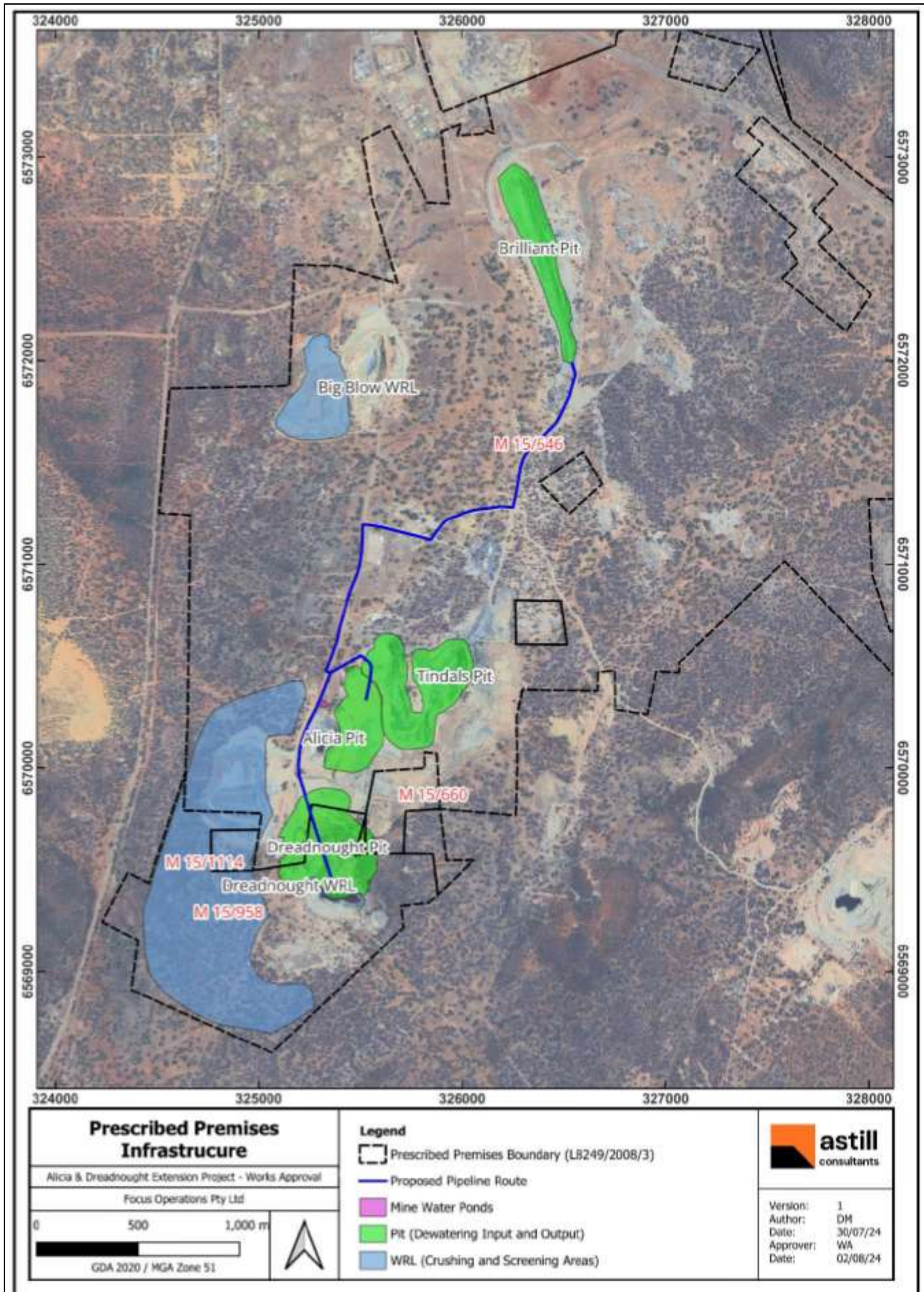


Figure 1: Map of the boundary of the prescribed premises