



Works Approval

Works approval number	W6858/2023/1	
Works approval holder	BHP Iron Ore Pty Ltd	
ACN	008 700 981	
Registered business address	Level 1, City Square Brookfield Place 125 St Georges Terrace Perth WA 6000	
DWER file number	DER2023/000636	
Duration	29/04/2024 to	28/04/2029
Date of issue	29 April 2024	
Date of amendment	10 December 2024	
Premises details	Eastern Ridge Iron Ore Mine	
	Legal description - Mining Tenement M244SA As defined by the coordinates in Schedule 2	

Prescribed premises category description (Schedule 1, <i>Environmental Protection Regulations 1987</i>)	Assessed production / design capacity
Category 6: Mine dewatering premises on which water is extracted and discharged into the environment to allow mining of ore	21,900,000 tonnes per annual period

This works approval is granted to the works approval holder, subject to the attached conditions, on 10 December 2024, by:

MANAGER, PROCESS INDUSTRIES

an officer delegated under section 20 of the *Environmental Protection Act 1986* (WA)

Works approval history

Date	Reference number	Summary of changes
29/04/2024	W6858/2023/1	Works approval granted.
10/12/2024	W6858/2023/1	Amendment to condition 18 to correct typographical error

Interpretation

In this works approval:

- (a) the words ‘including’, ‘includes’ and ‘include’ in conditions mean “including but not limited to”, and similar, as appropriate;
- (b) where any word or phrase is given a defined meaning, any other part of speech or other grammatical form of that word or phrase has a corresponding meaning;
- (c) where tables are used in a condition, each row in a table constitutes a separate condition;
- (d) any reference to an Australian or other standard, guideline, or code of practice in this works approval:
 - (i) if dated, refers to that particular version; and
 - (ii) if not dated, refers to the latest version and therefore may be subject to change over time;
- (e) unless specified otherwise, any reference to a section of an Act refers to that section of the EP Act; and
- (f) unless specified otherwise, all definitions are in accordance with the EP Act.

NOTE: This works approval requires specific conditions to be met but does not provide any implied authorisation for other emissions, discharges, or activities not specified in this works approval.

Works approval conditions

The works approval holder must ensure that the following conditions are complied with:

Construction phase

Infrastructure and equipment

1. The works approval holder must:
 - (a) construct and/or install the infrastructure and/or equipment;
 - (b) in accordance with the corresponding design and construction / installation requirements; and
 - (c) at the corresponding infrastructure location; and
 - (d) within the corresponding timeframe,
 as set out in Table 1.

Table 1: Design and construction / installation requirements

	Infrastructure	Design and construction / installation requirements	Infrastructure location
1.	Dewatering Pipeline from Orebody 32 dewatering network to Ophthalmia Dam	<ol style="list-style-type: none"> 1. All pipelines installed for pumping of mine dewater must meet the following standards: <ol style="list-style-type: none"> a. AS/NZS 2033:2008 b. AS/NZS 4129:2020 c. AS/NZS 4130:2018 2. The first 1km of the pipeline from Orebody 32 may either be buried or above ground. 3. The remaining pipelines from Orebody 32 to Ophthalmia Dam must be bunded within V drains or buried; 4. Pipelines must have telemetry leak detection systems and auto shut-off systems installed to monitor leaks or pipeline failures; 5. Pipeline scour points at strategic locations to be fitted with rip-rap protection to prevent erosion during pipelines flushing / draining; and 6. Have a flow meter installed to measure volume of water discharged. 	Located within area labelled "Surplus Water Pipeline Alignment" as depicted in Schedule 1, Figure 1
2.	A new surplus water discharge point at the Ophthalmia Dam	Outfall must be installed atop rip-rap to prevent erosion.	Located within area labelled "Ophthalmia Dam Discharge Point" as depicted in Schedule 1, Figure 1

Compliance reporting

2. The works approval holder must within 30 calendar days of an item of infrastructure or equipment required by condition 1 being constructed and/or installed:
 - (a) undertake an audit of their compliance with the requirements of condition 1; and
 - (b) prepare and submit to the CEO an Environmental Compliance Report on that compliance.
3. The Environmental Compliance Report required by condition 2, must include as a minimum the following:
 - (a) certification by a suitably qualified person that the items of infrastructure or component(s) thereof, as specified in condition 1, have been constructed in accordance with the relevant requirements specified in condition 1;
 - (b) as constructed plans and a detailed site plan for each item of infrastructure or component of infrastructure specified in condition 1; and
 - (c) be signed by a person authorised to represent the works approval holder and contains the printed name and position of that person.

Environmental commissioning phase

Environmental commissioning requirements and emission limits

4. The works approval holder may only commence environmental commissioning of an item of infrastructure listed in condition 5 once the Environmental Compliance Report has been submitted for that item of infrastructure in accordance with condition 2 of this works approval.
5. Any environmental commissioning activities undertaken for an item of infrastructure specified in Table 2 may only be carried out:
 - (a) in accordance with the corresponding commissioning requirements; and
 - (b) for the corresponding authorised commissioning duration.

Table 2: Environmental commissioning requirements

Infrastructure	Commissioning requirements	Authorised commissioning duration
Dewatering pipeline	<ul style="list-style-type: none"> • Pipelines maintained and fit for operational purpose. • Telemetry leak detection system installed to be maintained and operational. • Undertake 48 hourly visual inspections of the pipeline to ensure integrity; and • Pipeline scour points at strategic locations to be fitted with rip-rap protection to prevent erosion during pipeline flushing / draining. 	65 calendar days
Discharge point	Outfall infrastructure must be inspected daily when discharging to confirm structural integrity of rip rap material, check for signs of erosion and ensure discharged mine dewater is not pooling along the lake shore.	

6. During environmental commissioning, the works approval holder must ensure that the emission(s) specified in Table 3, are discharged only from the corresponding discharge point(s) and only at the corresponding discharge point location(s).

Table 3: Authorised discharge points during commissioning

Emission	Discharge point	Discharge point location
Mine dewater	Ophthalmia Dam Discharge Point	As shown in Schedule 1, Figure 1

Monitoring during environmental commissioning

7. The works approval holder must monitor emissions during environmental commissioning in accordance with Table 4.

Table 4: Emissions and discharge monitoring during environmental commissioning

Discharge point	Monitoring location	Parameter	Frequency	Averaging Period	Unit
Ophthalmia Dam	'DO1' as depicted Schedule 1, Figure 2	Volumetric flow rate (cumulative)	Continuous	Daily	ML/day
		Electrical conductivity	Monthly	Spot sample	µS/CM
		pH		Spot sample	pH units
		Total Dissolved Solids		Spot sample	mg/L
		Total Recoverable Hydrocarbons (TRH)			
		Aluminum (Al)			
		Arsenic (As)			
		Barium (Ba)			
		Boron (B)			
		Calcium (Ca)			
		Cadmium (Cd)			
		Chloride (Cl)			
		Carbonate (CO ₃)			
		Chromium (Cr)			
Copper (Cu)					
Fluoride (F)					
Iron (Fe)					
Bicarbonate (HCO ₃)					
Mercury (Hg)					
Potassium (K)					
Magnesium (Mg)					
Manganese (Mn)					
Molybdenum (Mo)					

Discharge point	Monitoring location	Parameter	Frequency	Averaging Period	Unit
		Sodium (Na)			
		Nickel (Ni)			
		Nitrate (NO ₃)			
		Lead (Pb)			
		Selenium (Se)			
		Silica (SiO ₂)			
		Sulfate (SO ₄)			
		Total Nitrogen (TN)			
		Total Phosphorus (TP)			
		Vanadium (V)			
		Zinc (Zn)			

8. The works approval holder must record the results of all monitoring activity required by condition 7.
9. The works approval holder must submit to the CEO an Environmental Commissioning Report within 30 calendar days of the completion date of environmental commissioning for each item of infrastructure specified in Table 2.
10. The works approval holder must ensure the Environmental Commissioning Report required by condition 9 of this works approval includes the following:
 - (a) a summary of the environmental commissioning activities undertaken, including timeframes and amount of mine dewater processed;
 - (b) the point-source emissions monitoring results recorded in accordance with condition 7;
 - (c) a summary of the environmental performance of each item of infrastructure or equipment as constructed or installed (as applicable), which at minimum includes records detailing the pipeline inspections.
 - (d) a review of the works approval holder’s performance and compliance against the conditions of this works approval; and
 - (e) where they have not been met, measures proposed to meet the manufacturer’s design specifications and the conditions of this works approval, together with timeframes for implementing the proposed measures.

Time limited operations phase

Commencement and duration

11. The works approval holder may only commence time limited operations for an item of infrastructure identified in condition 1 where the Environmental Commissioning Report for that item of infrastructure as required by condition 9 has been submitted by the works approval holder.

12. The works approval holder may conduct time limited operations for an item of infrastructure specified in condition 13 (as applicable):
- (a) for a period not exceeding 180 calendar days from the day the works approval holder meets the requirements of condition 11 for that item of infrastructure; or
 - (b) until such time as a licence for that item of infrastructure is granted in accordance with Part V of the *Environmental Protection Act 1986*, if one is granted before the end of the period specified in condition 12(a).

Time limited operations requirements and emission limits

13. During time limited operations, the works approval holder must ensure that the premises infrastructure and equipment listed in Table 5 and located at the corresponding infrastructure location is maintained and operated in accordance with the corresponding operational requirement set out in Table 5.

Table 5: Infrastructure and equipment requirements during time limited operations

	Site infrastructure and equipment	Operational requirement	Infrastructure location
1.	Dewatering pipeline	<ul style="list-style-type: none"> • Pipelines maintained and fit for operational purpose; • Telemetry leak detection system installed to be maintained and operational; and • Pipeline scour points to be fitted with rip-rap protection to prevent erosion during pipeline flushing / draining. 	Within the prescribed premises as detailed in Figure 1, Schedule 1
2.	Discharge point	Maintain perforated outlet and rip rap at the contingency discharge point at the Ophthalmia Dam discharge point.	“Ophthalmia Dam Discharge Point” Figure 1, Schedule 1 Maps

14. During time limited operations, the works approval holder must ensure that the emission specified in Table 6, are discharged only from the corresponding discharge point and only at the corresponding discharge point location.

Table 6: Authorised discharge points

Emission	Discharge point	Discharge point location
Water from dewatering of Eastern Ridge	Ophthalmia Dam discharge point	Figure 1, Schedule 1

Monitoring during time limited operations

15. The works approval holder must monitor emissions during time limited operations in accordance with Table 7.

Table 7: Emission and discharge monitoring during time limited operations

Discharge point and monitoring location	Parameter	Frequency	Averaging Period	Unit
Ophthalmia Dam 'D01 to D07' as depicted Schedule 1, Figure 2	Volumetric flow rate (cumulative)	Continuous	Daily	ML/day
	Electrical conductivity	Quarterly	Spot sample	µS/CM
	pH		Spot sample	pH units
	Total Dissolved Solids Total Recoverable Hydrocarbons (TRH) Aluminum (Al) Arsenic (As) Barium (Ba) Boron (B) Calcium (Ca) Cadmium (Cd) Chloride (Cl) Carbonate (CO ₃) Chromium (Cr) Copper (Cu) Fluoride (F) Iron (Fe) Bicarbonate (HCO ₃) Mercury (Hg) Potassium (K) Magnesium (Mg) Manganese (Mn) Molybdenum (Mo) Sodium (Na) Nickel (Ni) Nitrate (NO ₃) Lead (Pb) Selenium (Se) Silica (SiO ₂) Sulfate (SO ₄) Total Nitrogen (TN) Total Phosphorus (TP) Vanadium (V) Zinc (Zn)		Spot sample	mg/L

16. The works approval holder must sample dewater discharges for concentrations of the identified parameters in accordance with Table 8.

Table 8: PFAS and discharge monitoring

Discharge Monitoring location (as per Schedule 1, Figure 2) of this licence	Parameter	Units	Minimum frequency	Method
Ophthalmia Dam 'D01 to D07' as depicted Schedule 1, Figure 2	PFAS – Full species suite (28 analytes), including: Perfluorooctane sulfonate (PFOS) Perfluorohexane sulfonate (PFHxS) Perfluorooctanoic acid (PFOA)	µg/L	Once off spot sample – all samples to be collected as per condition 18	All samples must be collected in accordance with the DWER Guideline: Assessment and management of contaminated sites and Schedule B2 of the Assessment of Site Contamination NEPM

17. The works approval holder must record the results of all monitoring activity required by conditions 15 and 16.
18. The works approval holder must provide to the CEO no later than 60 days after commencing time limited operations, a report which includes the following, but not limited to:
- laboratory results from parameters tested as specified in Condition 16; and
 - an analysis and interpretation of the results against the 99% species protection values from the PFAS National Environmental Management Plan.

Compliance reporting

19. The works approval holder must submit to the CEO a report on the time limited operations within 60 calendar days of the completion date of time limited operations or 90 calendar days before the expiration date of the works approval, whichever is the sooner.
20. The works approval holder must ensure the report required by condition 19 includes the following:
- a summary of the time limited operations, including timeframes and amount of dewatering processed;
 - a summary of monitoring parameter results obtained during time limited operations under condition 14.
 - a summary of the environmental performance of all infrastructure as constructed or installed (as applicable), which includes records detailing the results of the pipeline inspections.
 - a review of performance and compliance against the conditions of the works approval and the Environmental Commissioning Report; and
 - where the manufacturer's design specifications and the conditions of this works approval have not been met, what measures will the works approval holder take to meet them, and what timeframes will be required to implement those measures.

Records and reporting (general)

- 21.** The works approval holder must record the following information in relation to complaints received by the works approval holder (whether received directly from a complainant or forwarded to them by the Department or another party) about any alleged emissions from the premises:
- (a) the name and contact details of the complainant, (if provided);
 - (b) the time and date of the complaint;
 - (c) the complete details of the complaint and any other concerns or other issues raised; and
 - (d) the complete details and dates of any action taken by the works approval holder to investigate or respond to any complaint.
- 22.** The works approval holder must maintain accurate and auditable books including the following records, information, reports, and data required by this works approval:
- (a) the works conducted in accordance with condition 1;
 - (b) any maintenance of infrastructure that is performed in the course of complying with condition 1;
 - (c) monitoring programmes undertaken in accordance with conditions 7, 15 and 16; and
 - (d) complaints received under condition 21.
- 23.** The books specified under condition 22 must:
- (a) be legible;
 - (b) if amended, be amended in such a way that the original version(s) and any subsequent amendments remain legible and are capable of retrieval;
 - (c) be retained by the works approval holder for the duration of the works approval; and
 - (d) be available to be produced to an inspector or the CEO as required.

Definitions

In this works approval, the terms in Table 8 have the meanings defined.

Table 8: Definitions

Term	Definition
annual period	a 12 month period commencing from 1 July until 30 June of the immediately following year.
AS/NZS 2033:2008	refers to the Australian/New Zealand Standards for the 'Installation of polyethylene pipe systems'.
AS/NZS 4129:2020	refers to the Australian/New Zealand Standards for the 'Fittings for polyethylene (PE) pipes for pressure applications'.
AS/NZS 4130:2018	refers to the Australian/New Zealand Standards for the 'Polyethylene pipes for pressure application'.
books	has the same meaning given to that term under the EP Act.
CEO	means Chief Executive Officer. CEO for the purposes of notification means: Director General Department administering the <i>Environmental Protection Act 1986</i> Locked Bag 10 Joondalup DC WA 6919 info@dwer.wa.gov.au
condition	a condition to which this works approval is subject under section 62 of the EP Act.
Department	means the department established under section 35 of the <i>Public Sector Management Act 1994</i> and designated as responsible for the administration of Part V Division 3 of the EP Act.
dewater	refers to groundwater abstracted to allow mining of ore
discharge	has the same meaning given to that term under the EP Act.
emission	has the same meaning given to that term under the EP Act.
environmental commissioning	means the sequence of activities to be undertaken to test equipment integrity and operation, or to determine the environmental performance, of equipment and infrastructure to establish or test a steady state operation and confirm design specifications.
Environmental Commissioning Report	means a report on any commissioning activities that have taken place and a demonstration that they have concluded, with focus on emissions and discharges, waste containment, and other environmental factors.
Environmental Compliance Report	means a report to satisfy the CEO that the conditioned infrastructure and/or equipment has been constructed and/or installed in accordance

Term	Definition
	with the works approval.
EP Act	<i>Environmental Protection Act 1986 (WA).</i>
EP Regulations	<i>Environmental Protection Regulations 1987 (WA).</i>
HDPE	means high density polyethylene.
NEPM	means National Environment Protection Measure.
PFAS	for per- and poly-fluoroalkyl substances.
PFAS NEMP	means PFAS National Environmental Management Plan, Heads of EPAs Australia and New Zealand, January 2008.
premises	the premises to which this licence applies, as specified at the front of this licence and as shown on the premises map in Schedule 1 to this works approval.
prescribed premises	has the same meaning given to that term under the EP Act.
Quarter or Quarterly	refers to the four inclusive periods from 1 July to 30 September, 1 October to 31 December, 1 January to 31 March and 1 April to 30 June.
Rip-rap	means large loose rock or stones that are used to reduce the speed of dewater following discharge and armour designated areas from erosion caused by dewater.
time limited operations	refers to the operation of the infrastructure and equipment identified under this works approval that is authorised for that purpose, subject to the relevant conditions.
works approval	refers to this document, which evidences the grant of the works approval by the CEO under section 54 of the EP Act, subject to the conditions.
works approval holder	refers to the occupier of the premises being the person to whom this works approval has been granted, as specified at the front of this works approval.

END OF CONDITIONS

Schedule 1: Maps

Premises map

The boundary of the prescribed premises is shown in the map below (Figure 1).

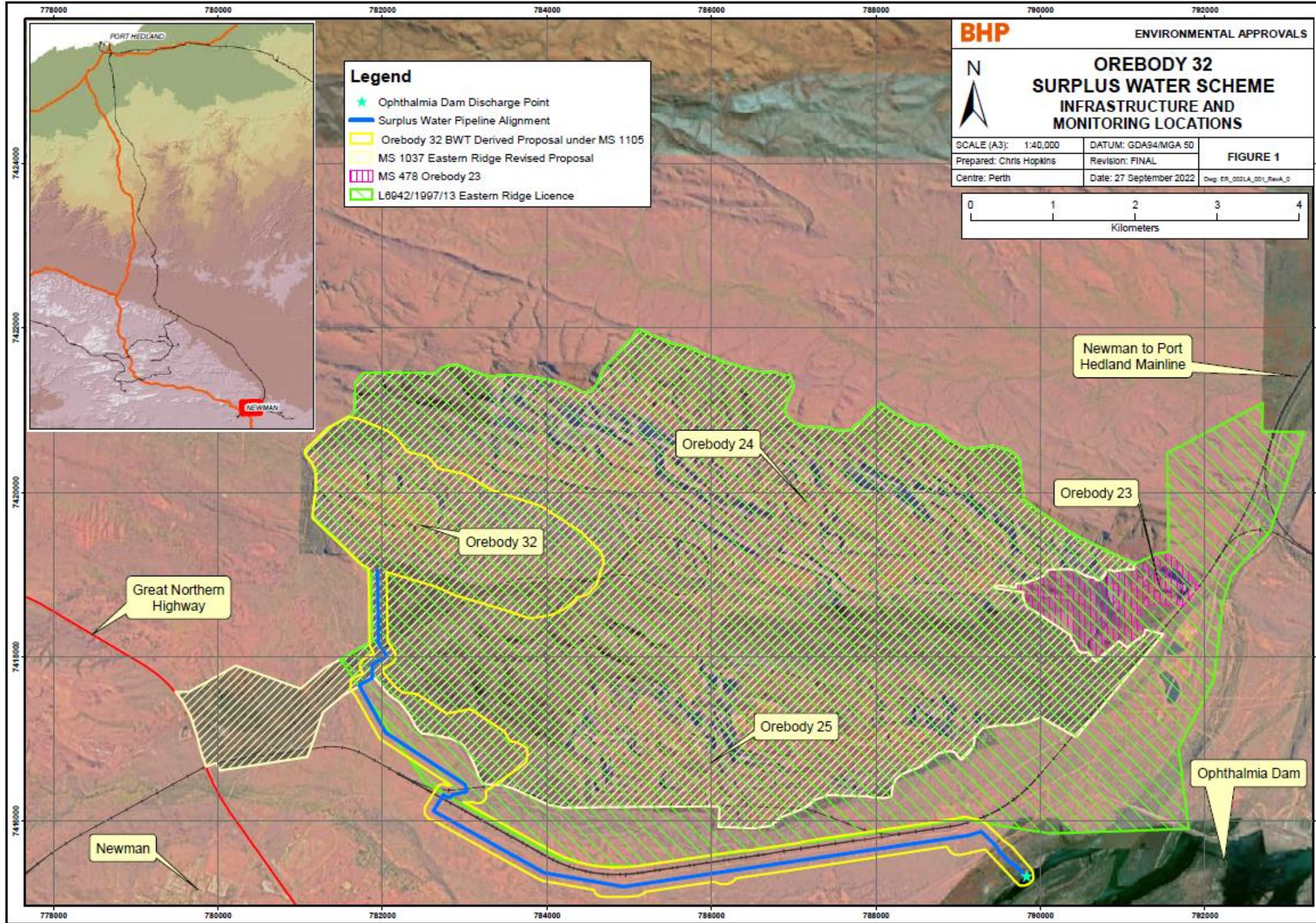


Figure 1: Map of the boundary of the prescribed premises

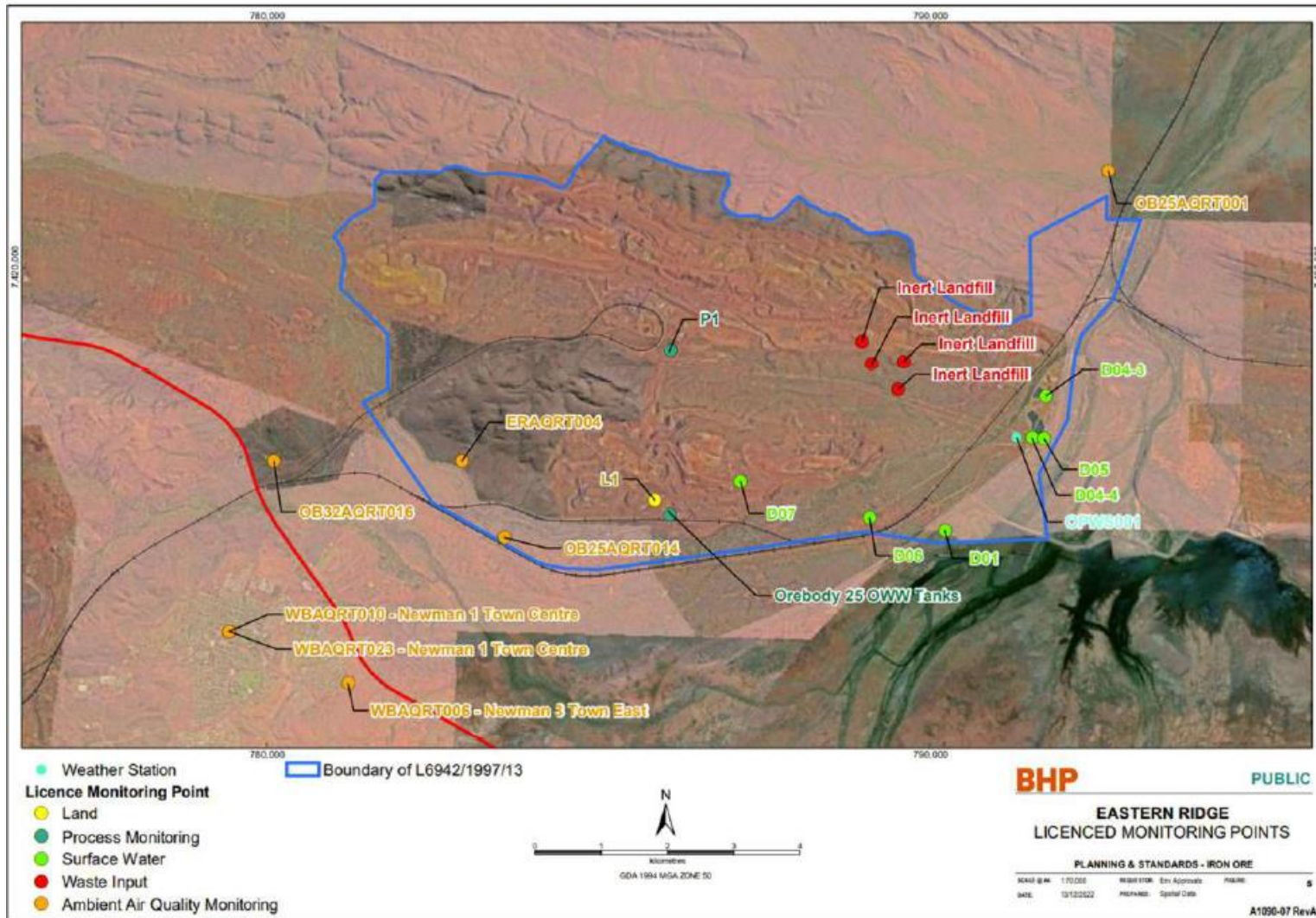


Figure 2: Eastern Ridge Monitoring points L6942/199/13

W6858/2023/1 (10 December 2024)

IR-T05 Works approval template (v6.0) (September 2022)

Schedule 2: Premises boundary

The corners of the premises boundary are the coordinates listed in Table 9.

Table 9: Premises boundary coordinates (GDA2020)

Easting	Northing	Easting	Northing	Easting	Northing
786512.9	7421469.1	787802	7420869	789056.8	7420526.8
786624.8	7421456.8	787812.8	7420879	789059.7	7420525.6
786739.1	7421457.4	787846.8	7420912.5	789061.3	7420525
786841.5	7421418.6	787880.4	7420946.3	789066.6	7420523.6
786921.7	7421427.1	787887.5	7420954.2	789071.4	7420522.8
786966.5	7421275.7	787899.3	7420968.4	789076.4	7420522.3
786939.5	7421209.8	787906.5	7420976.8	789081.5	7420522.2
786917.3	7421170.9	787915.4	7420986.3	789086.3	7420522.3
786897.4	7421128.9	787921.3	7420991.5	789097.8	7420523.3
786884	7421080.4	787928.2	7420996.6	789108.1	7420524.8
786852.2	7420994.7	788017.4	7421073.3	789129.2	7420528.7
786862.5	7420976.5	788036.6	7421069.4	789163.8	7420535.3
786894.3	7420920.1	788036.8	7421069.3	789182.8	7420538.1
786903.4	7420904.3	788076.2	7421038.1	789193.2	7420539.1
786977.1	7420844.3	788147.6	7420979.2	789203.2	7420539.6
786991.2	7420832.8	788147.6	7420979.2	789253.4	7420540.8
787087.3	7420799	788199.6	7420945.7	789301.4	7420542.1
787233.3	7420787.1	788248.9	7420927.3	789302.7	7420542.2
787344.9	7420789.9	788295.5	7420901.6	789303.1	7420542.3
787349.3	7420789.8	788355.4	7420862.7	789307.3	7420543.4
787351.6	7420789.6	788412.8	7420837.2	789311.7	7420544.9
787375.6	7420786.9	788461.7	7420813.1	789336.4	7420553.8
787379.5	7420786.3	788485.2	7420805.2	789345.8	7420556.4
787385.6	7420784.8	788505.8	7420813.2	789354	7420558
787390.9	7420782.7	788532.1	7420817	789366.2	7420559.4
787420.9	7420769	788562.8	7420816.1	789379	7420559.2
787421.4	7420768.8	788596.5	7420809.1	789395.4	7420557.1
787427	7420765.8	788648.1	7420776.6	789407	7420555
787513.1	7420747.1	788663.6	7420765	789422.8	7420551.5
787627.9	7420748.6	788720.9	7420737	789437.9	7420547.6
787662.2	7420760.4	788775.8	7420689.2	789466.6	7420539.8
787686.9	7420776.2	788807.9	7420662.4	789494.4	7420532.3
787695.6	7420785	788832.5	7420645.5	789513.6	7420527.5
787704.1	7420793	788863.5	7420628.1	789534.3	7420522.4
787719.2	7420806.1	788922	7420603.9	789547.6	7420518.6
787732.8	7420816.8	788955.9	7420586.2	789559.2	7420514.7
787755.2	7420833.4	788981.1	7420561.2	789569.5	7420510.8
787771.4	7420845.1	788981.1	7420561.2	789585.8	7420503.7
787782.8	7420853.6	788981.1	7420561.1	789598.2	7420497.7
787790.6	7420859.6	788981.1	7420560.8	789615.7	7420488.3

Easting	Northing
789633	7420478.2
789640.7	7420473.2
789648	7420468
789658.6	7420459.2
789666.5	7420451.7
789672.3	7420445.5
789679.8	7420436.6
789686.7	7420427.2
789692.2	7420419
789697	7420411.3
789704.2	7420398.2
789709.3	7420387.2
789712.2	7420379.6
789713.5	7420376.1
789717	7420364.4
789719.8	7420350.4
789722.2	7420329.8
789724.4	7420302.3
789725.4	7420289.6
789726.7	7420277.9
789730.2	7420254.6
789734	7420229
789735.9	7420210
789736.8	7420193
789736.9	7420177.8
789736.6	7420171.8
789742.5	7420124.5
789743.6	7420107.6
789748.2	7420069.9
789768	7419908.2
789800.8	7419881.3
789835.7	7419852.4
789999.4	7419734.6
790044.5	7419702.3
790140.7	7419640.2
790192.4	7419605.8
790206.4	7419595
790225.8	7419581.7
790333	7419508.2
790373.1	7419486.2
790427.8	7419453.6
790526	7419401.2
790750.9	7419301.4
790802.2	7419275.8
790871.6	7419240.7

Easting	Northing
790975.8	7419189.8
790993.7	7419182.2
791014.9	7419172.5
791055.4	7419155.3
791102	7419137
791102.4	7419136.9
791167.1	7419147
791381.8	7419249.7
791441	7419258.6
791471.7	7419264.3
791521.4	7419280.5
791509.2	7420473.2
792670.9	7421080.8
792664.1	7420737.6
792664.1	7420736.6
792664.1	7420736.6
792664.1	7420736.6
792664.1	7420736.6
792664.1	7420736.6
792805.6	7420733.8
792810.3	7420733.7
792817.2	7420733.5
793172.7	7420726.4
792824.8	7419705.9
792763.2	7419525.2
792758.2	7419519.6
792295.2	7418995.2
792185.2	7418664.2
792078.2	7417713.2
791927.7	7417423.9
791876.3	7417325
791646.2	7416882.2
791771.2	7415902.2
790091.2	7415845.2
789441.6	7415946.1
789353.2	7415959.8
789519.1	7415802.4
789521.2	7415800.4
789524.6	7415796.4
789536.7	7415780.3
789637.9	7415701.6
789639.2	7415700.6
789665.4	7415678.7
789669.7	7415674.6
789670.9	7415673.2
789816.5	7415506.7

Easting	Northing
789885.9	7415426.2
789888.5	7415422.9
789891.8	7415417.7
789906.2	7415391.5
789908.9	7415385.9
789910.8	7415380
789912	7415373.9
789917.8	7415330
789918.2	7415323.6
789918.1	7415320.9
789917.4	7415307.3
789916.9	7415302
789915.8	7415296.9
789914.1	7415291.8
789911.9	7415287
789909.3	7415282.4
789906.1	7415278.2
789903.3	7415274.7
789902.7	7415274
789901	7415272.1
789900.5	7415271.5
789896	7415266.7
789894.8	7415265.5
789894.3	7415265
789889	7415259.7
789887.7	7415258.5
789885.6	7415256.6
789883.8	7415254.8
789881.5	7415252.8
789879.5	7415251.2
789879	7415250.8
789878	7415249.9
789876.5	7415248.8
789873.8	7415246.6
789868.4	7415242.8
789866	7415241.2
789865.6	7415240.9
789864.3	7415240.1
789860.2	7415237.5
789857.3	7415235.9
789855.7	7415235
789852.7	7415233.4
789851.6	7415232.8
789849.3	7415231.7
789848.6	7415231.4

Easting	Northing
789845.4	7415229.9
789844.6	7415229.5
789843.3	7415228.9
789842.6	7415228.7
789839.6	7415227.4
789833.5	7415225.1
789831.4	7415224.3
789830.7	7415224.2
789830.1	7415223.9
789828	7415223.3
789827.3	7415223.1
789824.2	7415222.2
789821	7415221.3
789819.5	7415220.9
789815.3	7415220
789814.6	7415219.8
789812.6	7415219.4
789811.4	7415219.2
789806.3	7415218.3
789805	7415218.1
789802.4	7415217.8
789801.7	7415217.7
789795.2	7415217
789793.4	7415216.9
789791.9	7415216.8
789791.4	7415216.8
789788.2	7415216.7
789787.7	7415216.7
789785.4	7415216.6
789782.1	7415216.6
789779.9	7415216.7
789779.3	7415216.7
789776.1	7415216.8
789775.6	7415216.8
789774.1	7415216.9
789772.3	7415217
789767.2	7415217.6
789761.7	7415218.4
789756.4	7415219.8
789751.3	7415221.8
789746.4	7415224.4
789741.9	7415227.5
789737.7	7415231.1
789674.1	7415291.5
789672	7415293.5

Easting	Northing
789671.5	7415294.1
789573.5	7415401.9
789335	7415658.4
789039.5	7415592.2
789034.9	7415591.8
789030.3	7415591.6
789027	7415591.7
788974	7415594.2
788972.7	7415594.3
788968.2	7415594.7
788963.7	7415595.5
788959.2	7415596.5
788954.8	7415597.9
788950.5	7415599.5
788946.4	7415601.4
788942.3	7415603.5
788938.4	7415605.9
788934.7	7415608.6
788931.2	7415611.5
788927.8	7415614.6
788927.5	7415615
788900.7	7415642.1
788897.9	7415645.1
788895	7415648.7
788892.8	7415651.6
788875	7415677.6
788874.5	7415678.3
788872.5	7415681.4
788866.6	7415691.4
788866.9	7415647.3
787728.7	7415517.4
786761.6	7415374
786388.5	7415318.6
786295.6	7415304.8
786294.3	7415301.9
786292.9	7415298.9
786290.8	7415294.9
786288.3	7415291
786285.7	7415287.3
786282.8	7415283.7
786279.6	7415280.4
786276.3	7415277.3
786272.7	7415274.4
786269	7415271.7
786265.1	7415269.3

Easting	Northing
786261.1	7415267.1
786260.4	7415266.8
786209.6	7415242.4
786206.1	7415240.8
786201.8	7415239.2
786197.4	7415237.9
786193	7415236.9
786188.4	7415236.1
786183.9	7415235.7
786181.6	7415235.6
786133.2	7415234
786126.3	7415234.1
786121.7	7415234.5
786117.2	7415235.3
786112.7	7415236.3
786108.4	7415237.6
786106.2	7415238.4
786039.2	7415263.6
786037	7415264.4
786033.6	7415266
785655.9	7415210
785210.8	7415144
785130	7415099.6
785125.3	7415097.3
785120.5	7415095.6
785115.5	7415094.3
785110.4	7415093.6
784958.7	7415080
784957.3	7415079.9
784953.4	7415079.8
784716	7415083.8
784712	7415083.8
784709.8	7415083.8
784667	7415086.3
784666.1	7415086.3
784665.5	7415086.4
784664.9	7415086.4
784664.3	7415086.5
784663.6	7415086.5
784663	7415086.6
784662.4	7415086.7
784661.8	7415086.7
784661.1	7415086.8
784660.5	7415086.9
784659.9	7415087

Easting	Northing
784659.3	7415087
784658.7	7415087.1
784658	7415087.2
784657.4	7415087.3
784656.8	7415087.4
784656.2	7415087.5
784655.6	7415087.6
784654.9	7415087.7
784654.4	7415087.8
784653.7	7415088
784653.1	7415088.1
784652.5	7415088.2
784651.9	7415088.4
784651.3	7415088.5
784650.6	7415088.6
784650	7415088.8
784649.4	7415088.9
784648.8	7415089.1
784648.2	7415089.2
784647.6	7415089.4
784647	7415089.5
784646.4	7415089.7
784645.8	7415089.9
784645.2	7415090
784644.6	7415090.2
784644	7415090.4
784643.4	7415090.6
784642.8	7415090.8
784642.3	7415090.9
784641.6	7415091.2
784641	7415091.4
784640.4	7415091.6
784639.8	7415091.8
784639.2	7415092
784638.6	7415092.2
784638	7415092.4
784637.5	7415092.6
784636.9	7415092.9
784636.3	7415093.1
784635.7	7415093.3
784635.1	7415093.6
784634.6	7415093.8
784634	7415094
784633.4	7415094.3
784632.8	7415094.5

Easting	Northing
784632.2	7415094.8
784631.7	7415095
784631.1	7415095.3
784630.6	7415095.5
784630	7415095.8
784629.4	7415096.1
784628.8	7415096.4
784628.3	7415096.7
784627.7	7415097
784627.2	7415097.2
784626.6	7415097.5
784626.1	7415097.8
784625.5	7415098.1
784625	7415098.4
784624.4	7415098.7
784623.9	7415099
784623.3	7415099.3
784622.8	7415099.7
784622.2	7415100
784621.7	7415100.3
784621.2	7415100.6
784620.6	7415100.9
784620.1	7415101.3
784619.6	7415101.6
784619	7415101.9
784618.5	7415102.3
784618	7415102.6
784617.5	7415103
784616.9	7415103.3
784616.4	7415103.7
784615.9	7415104
784615.4	7415104.4
784614.9	7415104.8
784614.4	7415105.1
784613.9	7415105.5
784613.4	7415105.9
784612.9	7415106.2
784612.4	7415106.6
784611.9	7415107
784611.4	7415107.4
784610.9	7415107.8
784610.4	7415108.2
784609.9	7415108.6
784609.4	7415108.9
784608.9	7415109.4

Easting	Northing
784608.4	7415109.8
784608	7415110.2
784607.5	7415110.6
784607	7415111
784606.5	7415111.4
784601.6	7415114.3
784597	7415117.8
784592.9	7415121.7
784589.3	7415126.1
784586.1	7415130.8
784583.6	7415135.9
784581.6	7415141.3
784580.3	7415146.8
784579.6	7415152.5
784578.7	7415164.8
784147.5	7415241.1
783952.4	7415275.6
783948.3	7415276.5
783944.3	7415277.8
783928.7	7415283.3
783924.2	7415285.2
783921.1	7415286.7
783728.5	7415394
783289.4	7415638.6
782617.9	7416012.6
782579.4	7416025.2
782573.9	7416027.4
782568.8	7416030.2
782564	7416033.5
782559.6	7416037.4
782555.7	7416041.8
782526.2	7416079.2
782522.8	7416084.1
782520	7416089.4
782517.9	7416094.9
782516.4	7416100.7
782515.6	7416106.6
782515.6	7416112.5
782517.8	7416158.3
782518.3	7416163.3
782519.3	7416168.3
782520.8	7416173.1
782522.7	7416177.8
782525.2	7416182.2
782640.5	7416368.6

Easting	Northing
782515.8	7416440.6
782492.2	7416454.2
782231.9	7416832.9
782224.2	7416838
781988.2	7416992.1
781983.6	7416995.4
781979	7416999.8
781962.6	7417017.4
781958.7	7417022.1
781955.6	7417026.9
781676.3	7417521.1
781618.5	7417609
781615.7	7417613.8
781613.5	7417618.9
781611.8	7417624.2
781610.7	7417629.7
781610.3	7417635.2
781610.5	7417640.8
781611.2	7417646.3
781623.1	7417705.8
781624.8	7417711.9
781625.9	7417714.6
781454	7417964.6
781835.2	7418180.1
781829.1	7418998
781577.7	7419246.1
781577.5	7419246.1
781116.2	7419683.3
781118.4	7419711.4
781118.5	7419714
781118.9	7419729.5
781119.5	7419748.4
781120.6	7419763.7
781123.7	7419784.9
781123.9	7419785.7
781127	7419809.3
781131.5	7419839.9
781131.7	7419841
781132	7419845.8
781132.5	7419864
781135.3	7419889.8
781138.4	7419902.8
781139.4	7419908.1
781141.9	7419927.5
781146	7419950.6

Easting	Northing
781146.2	7419951.6
781149.1	7419970.8
781149.3	7419972
781152.2	7419994.4
781152.4	7419996.5
781154.7	7420023.6
781154.9	7420025.8
781155.7	7420048.1
781155.8	7420050.3
781155.5	7420072.3
781155.5	7420072.9
781155	7420095.7
781155.4	7420137.9
781156.2	7420174.6
781156.2	7420175.7
781156.2	7420177.9
781154.7	7420212.4
781154.3	7420216.5
781154	7420218.9
781149.4	7420245.2
781148.5	7420249
781147.4	7420252.8
781139.7	7420275.2
781139.3	7420276.2
781129.7	7420302.5
781129.3	7420303.7
781128.2	7420306.2
781119.6	7420324.7
781118.1	7420327.8
781117.1	7420329.4
781109.8	7420341.6
781109.4	7420342.3
781097.9	7420360.8
781095.9	7420363.8
781080.4	7420385.1
781077.9	7420388.3
781064.9	7420403.3
781052.7	7420418.5
781042.9	7420432.8
781031.9	7420453.8
781030.2	7420457.2
781020.8	7420476.6
781019.4	7420479.8
781024.6	7420496.7
781026.8	7420505.8

Easting	Northing
781203.6	7420679.6
781298.1	7420772.5
781622.5	7420954.4
781636.1	7421329.6
781741.8	7421452.1
781928.5	7421448.9
782108.3	7421454
782425.6	7421448.7
782428.3	7421448.9
782440.7	7421448.8
782451.8	7421447.8
782467	7421445.4
782486	7421441.7
782492.8	7421440.7
782499.1	7421440.3
782527	7421439.9
782548	7421440.3
782563.3	7421441.1
782574.3	7421442
782591.4	7421444.1
782599.3	7421445.4
782606.3	7421446.8
782609.7	7421447.8
782610.8	7421448.2
782614.4	7421450.2
782617.1	7421451.9
782619.5	7421453.7
782626	7421459
782656.6	7421488
782666.8	7421496.6
782675.5	7421503.1
782683.1	7421508.2
782694.6	7421514.7
782707	7421520.1
782726	7421526.7
782741	7421530.9
782753.2	7421533.3
782762.9	7421534.6
782770.2	7421535.1
782770.8	7421535.6
782867.1	7421547.4
782958.5	7421518.2
783086.3	7421465.5
783182.1	7421427.1
783269.1	7421407.1

Easting	Northing
783305.9	7421406.4
783508.6	7421425.4
783678.5	7421413
783903.2	7421381.3
784082	7421343
784082.2	7421342.6
784096	7421339
784101	7421337.6
784143.7	7421330.2
784188.1	7421314.6
784210.2	7421304.4
784323.7	7421252
784386.4	7421220.5
784403.5	7421213.8
784427.5	7421211.6
784436.4	7421214
784450.6	7421216.8
784471.7	7421219.7
784484.7	7421221.6
784491.8	7421223.1
784495.5	7421224.3
784497.3	7421225.1
784497.5	7421225.3
784498.5	7421226
784499.7	7421227.1
784506.6	7421233.8
784512.9	7421240.3
784524.4	7421253.1
784541.8	7421273.9
784559.8	7421296.1
784580.3	7421320.7
784588.7	7421331.7
784591.7	7421336.3
784594.6	7421341.1
784595	7421342
784596.6	7421345.9
784597.7	7421349.1
784600.2	7421358.8
784604.1	7421377.5
784605.3	7421382.4
784606.9	7421389.1
784610.6	7421400.9
784619.2	7421424.5
784625.8	7421441.9
784631.5	7421455.5

Easting	Northing
784640.6	7421475.4
784646	7421486
784651.8	7421496.4
784656.4	7421504.1
784665.2	7421516.8
784673.8	7421527.6
784681.8	7421536.5
784689.4	7421544.1
784702.1	7421555.6
784712.5	7421563.8
784720.7	7421569.8
784957.6	7421830.3
785007.6	7421878.8
785072.2	7421990
785100.8	7421975.6
785209.5	7421921.8
785298.3	7421881.5
785403.2	7421851.1
785415.5	7421845.2
785444.1	7421821.4
785458.9	7421814.5
785473.9	7421809.1
785497	7421804.3
785606	7421779.9
785647.9	7421770.1
785692.4	7421758.7
785775.5	7421725.2
785798.3	7421711.3
785831.4	7421688.3
785871.5	7421669.6
785952	7421645
786011.3	7421628.7
786054.9	7421611
786099.1	7421586.3
786157.3	7421564.9
786288.2	7421535.6
786443	7421491.3
786512.9	7421469.1