



Works approval number	W6945/2024/1
Works approval holder	Mt Magnet Gold Pty Ltd
ACN	008 669 556
Registered business address	Level 1, 130 Royal Street East Perth WA 6004
DWER file number	DWERVT15717
Duration	09/10/2024 to 10/10/2027
Date of issue	09/10/2024
Premises details	Mt Magnet Operations Power Station Part of Mining Tenement M 58/193 As depicted in Figure 1, Schedule 1 and as defined by the coordinates in Schedule 2

Prescribed premises category description (Schedule 1, <i>Environmental Protection Regulations 1987</i>)	Assessed production capacity
Category 52: Electric Power generation: premises (other than premises within category 53 or an emergency or standby power generating plant) on which electrical power is generated using a fuel.	13 MW of power using diesel

This works approval is granted to the works approval holder, subject to the attached conditions, on 9 October 2024, by:

Fiona Westcott
MANAGER, RESOURCE INDUSTRIES

Officer delegated under section 20 of the Environmental Protection Act 1986

Works approval history

Date	Reference number	Summary of changes
9/10/24	W6945/2024/1	Works approval granted.

Interpretation

In this works approval:

- (a) the words ‘including’, ‘includes’ and ‘include’ in conditions mean “including but not limited to”, and similar, as appropriate;
- (b) where any word or phrase is given a defined meaning, any other part of speech or other grammatical form of that word or phrase has a corresponding meaning;
- (c) where tables are used in a condition, each row in a table constitutes a separate condition;
- (d) any reference to an Australian or other standard, guideline, or code of practice in this works approval:
 - (i) if dated, refers to that particular version; and
 - (ii) if not dated, refers to the latest version and therefore may be subject to change over time;
- (e) unless specified otherwise, any reference to a section of an Act refers to that section of the EP Act; and
- (f) unless specified otherwise, all definitions are in accordance with the EP Act.

NOTE: This works approval requires specific conditions to be met but does not provide any implied authorisation for other emissions, discharges, or activities not specified in this works approval.

Infrastructure	Design installation requirements	Infrastructure location
		Schedule 1.

Compliance reporting

2. The works approval holder must within 30 calendar days of an item of infrastructure or equipment required by condition 1 being constructed and/or installed:
 - (a) undertake an audit of their compliance with the requirements of condition 1; and
 - (b) prepare and submit to the CEO an Environmental Compliance Report on that compliance.
3. The Environmental Compliance Report required by condition 2, must include as a minimum the following:
 - (a) certification by a suitably qualified engineer that the items of infrastructure or component(s) thereof, as specified in condition 1, have been constructed in accordance with the relevant requirements specified in condition 1;
 - (b) as constructed plans and a detailed site plan for each item of infrastructure or component of infrastructure specified in condition 1; and
 - (c) be signed by a person authorised to represent the works approval holder and contains the printed name and position of that person.

Time limited operations phase

Commencement and duration

4. The works approval holder may only commence time limited operations for an item of infrastructure identified in condition 1 where the Environmental Compliance Report as required by condition 2 has been submitted by the works approval holder for that item of infrastructure.
5. The works approval holder may conduct time limited operations for infrastructure specified in condition 1:
 - (a) for a period not exceeding 360 calendar days from the day the works approval holder meets the requirements of condition 3 for that item of infrastructure; or
 - (b) until such time as a licence for that item of infrastructure is granted in accordance with Part V of the *Environmental Protection Act 1986*, if one is granted before the end of the period specified in condition 5(a).

Monitoring – time limited operations

6. During time limited operations, the works approval holder must undertake the process monitoring in Table 2 according with the requirements specified in that table and record the results of all such monitoring.

Table 2: Process monitoring – diesel generators

Emission point	Parameter	Units	Frequency	Averaging

reference				Period
<ul style="list-style-type: none"> • 13 x 1.2 MVA generators • 3 x 6.3 MVA self banded transformer substations 	Generator run time (dates and hours operated)	Hours	Continuous	Hourly
	Fuel flow rate	Litres/hour		
	Electricity generated	MW		
	Percentage load	%		

7. The works approval holder must ensure that all monitoring equipment used to comply with condition 6 is calibrated in accordance with the manufacturer’s specifications.

Compliance reporting – time limited operations

8. The works approval holder must submit to the CEO a report on the time limited operations within 30 calendar days of the completion date of time limited operations.
9. The works approval holder must ensure the report required by condition 8 includes the following:
 - (a) a summary of the time limited operations;
 - (b) a review of performance and compliance against the conditions of the works approval; and
 - (c) where the manufacturer’s design specifications and the conditions of this works approval have not been met, what measures will the works approval holder take to meet them, and what timeframes will be required to implement those measures.

Records and reporting (general)

10. The works approval holder must record the following information in relation to complaints received by the works approval holder (whether received directly from a complainant or forwarded to them by the Department or another party) about any alleged emissions from the premises:
 - (a) the name and contact details of the complainant, (if provided);
 - (b) the time and date of the complaint;
 - (c) the complete details of the complaint and any other concerns or other issues raised; and
 - (d) the complete details and dates of any action taken by the works approval holder to investigate or respond to any complaint.
11. The works approval holder must maintain accurate and auditable books including the following records, information, reports, and data required by this works approval:
 - (a) the works conducted in accordance with condition 1;

- (b) any maintenance of infrastructure that is performed in the course of complying with condition 4;
- (c) complaints received under condition 10.

12. The books specified under condition 11 must:

- (a) be legible;
- (b) if amended, be amended in such a way that the original version(s) and any subsequent amendments remain legible and are capable of retrieval;
- (c) be retained by the works approval holder for the duration of the works approval; and
- (d) be available to be produced to an inspector or the CEO as required.

Definitions

In this works approval, the terms in Table 3 have the meanings defined.

Table 3: Definitions

Term	Definition
annual period	a 12 month period commencing from 24 September until 23 September of the immediately following year.
books	has the same meaning given to that term under the EP Act.
CEO	means Chief Executive Officer. CEO for the purposes of notification means: Director General Department administering the <i>Environmental Protection Act 1986</i> Locked Bag 10 Joondalup DC WA 6919 info@dwer.wa.gov.au
Department	means the department established under section 35 of the <i>Public Sector Management Act 1994</i> and designated as responsible for the administration of Part V Division 3 of the EP Act.
discharge	has the same meaning given to that term under the EP Act.
emission	has the same meaning given to that term under the EP Act.
Environmental Compliance Report	means a report to satisfy the CEO that the conditioned equipment has been installed in accordance with the works approval.
EP Act	<i>Environmental Protection Act 1986</i> (WA).
EP Regulations	<i>Environmental Protection Regulations 1987</i> (WA).
monthly period	means a one-month period commencing from 24 th day of a month until 23 rd of the immediately following month.
MVA	megavolt-amperes
premises	the premises to which this licence applies, as specified at the front of this licence and as shown on the premises map (Figure 1) in Schedule 1 to this works approval.
prescribed premises	has the same meaning given to that term under the EP Act.
Suitable qualified engineer	Means a person who: (a) holds a Bachelor of Engineering recognised by the Australian Institute of Engineers; and

Term	Definition
	<p>(b) has a minimum of five years of experience working in the design and/or implementation of the relevant infrastructure, or</p> <p>(c) who is otherwise approved by the CEO to act in this capacity.</p>
time limited operations	refers to the operation of the infrastructure and equipment identified under this works approval that is authorised for that purpose, subject to the relevant conditions.
USEPA Method 2	Means the United States Environmental Protection Authority <i>Method 2 – Determination of Stack Gas Velocity Flow Rate</i>
USEPA Method 6	means United States (of America) Environmental Protection Agency Method 6 – Determination of sulfur dioxide emissions from stationary sources
USEPA Method 6C	means United States (of America) Environmental Protection Agency Method 6C – Determination of sulfur dioxide emissions from stationary sources (Instrumental Analyzer Procedure)
USEPA Method 7E	Means the United States Environmental Protection Authority <i>Method 7 – Determination of Nitrogen Oxide Emissions from Stationary Sources</i>
USEPA Method 10	means United States (of America) Environmental Protection Agency Method 10 - Determination of carbon monoxide emissions from stationary sources (instrumental analyzer procedure)
works approval	refers to this document, which evidences the grant of the works approval by the CEO under section 54 of the EP Act, subject to the conditions.
works approval holder	refers to the occupier of the premises being the person to whom this works approval has been granted, as specified at the front of this works approval.

END OF CONDITIONS

Schedule 1: Maps

Premises map

The boundary of the prescribed premises is shown in the map below (Figure 1).

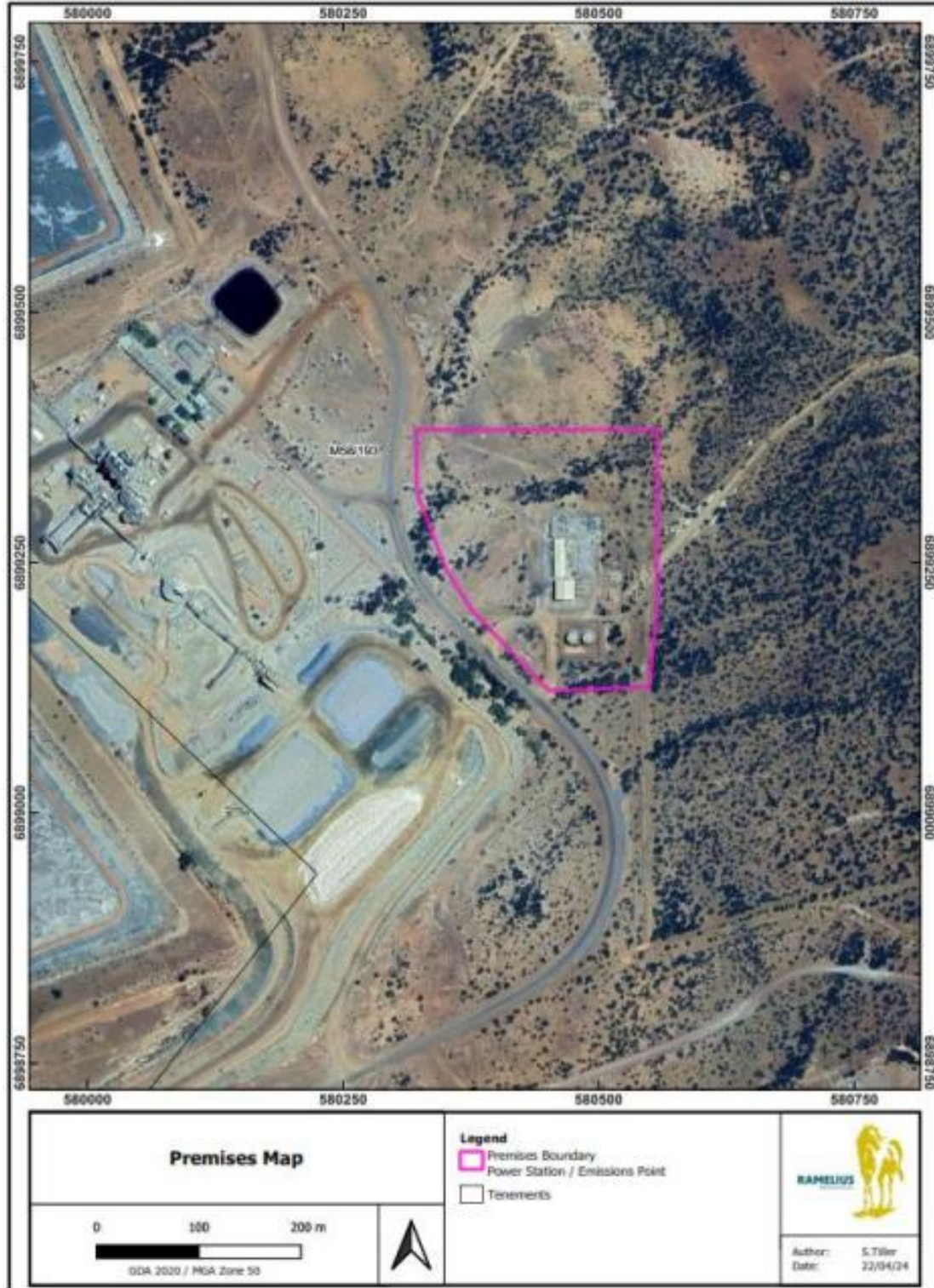


Figure 1: Map of the boundary of the prescribed premises

Schedule 2: Premises boundary

The corners of the premises boundary are the coordinates listed in Table 4.

Table 4: Premises boundary coordinates (GDA2020) Zone 50

	Easting	Northing
1.	580557	6899383
2.	580557	6899203
3.	580549	6899125
4.	580451	6899122
5.	580376	6899202
6.	580350	6899245
7.	580322	6899320
8.	580321	6899383