



Works approval number	W6776/2023/1
Works approval holder	Remondis Australia Pty Ltd
ACN	002 429 781
Registered business address	Level 4, 163 O'Riordan Street MASCOT NSW 2020
DWER file number	DER2022/000690
Duration	5/12/2023 to 4/12/2028
Date of issue	5/12/2023
Premises details	Remondis Cutler Road Recycling Centre 39 Cutler Road JANDAKOT WA 6164 Legal description - Lot 70 on Deposited Plan 415497 Certificate of Title Volume 2964 Folio 451 As defined by the coordinates in Schedule 1 of the works approval

Prescribed premises category description (Schedule 1, <i>Environmental Protection Regulations 1987</i>)	Assessed production capacity
Category 61A: premises (other than premises within category 67A) on which solid waste produced on other premises is stored, reprocessed, treated, or discharged onto land.	10, 000 tonnes per year

This works approval is granted to the works approval holder, subject to the attached conditions, on 5 December 2023, by:

STEPHEN CHECKER
MANAGER, WASTE INDUSTRIES
REGULATORY SERVICES

an officer delegated under section 20 of the *Environmental Protection Act 1986* (WA)

Works approval history

Date	Reference number	Summary of changes
01/12/2023	W6776/2023/1	Works approval granted.

Interpretation

In this works approval:

- (a) the words 'including', 'includes' and 'include' in conditions mean "including but not limited to", and similar, as appropriate;
- (b) where any word or phrase is given a defined meaning, any other part of speech or other grammatical form of that word or phrase has a corresponding meaning;
- (c) where tables are used in a condition, each row in a table constitutes a separate condition;
- (d) any reference to an Australian or other standard, guideline, or code of practice in this works approval:
 - (i) if dated, refers to that particular version; and
 - (ii) if not dated, refers to the latest version and therefore may be subject to change over time;
- (e) unless specified otherwise, any reference to a section of an Act refers to that section of the EP Act; and
- (f) unless specified otherwise, all definitions are in accordance with the EP Act.

NOTE: This works approval requires specific conditions to be met but does not provide any implied authorisation for other emissions, discharges, or activities not specified in this works approval.

Works approval conditions

The works approval holder must ensure that the following conditions are complied with:

Construction phase

Infrastructure and equipment

1. The works approval holder must:
 - (a) construct and/or install the infrastructure and/or equipment;
 - (b) in accordance with the corresponding design and construction / installation requirements; and
 - (c) at the corresponding infrastructure location;as set out in Table 1.

Table 1: Design and installation requirements

	Infrastructure	Design and installation requirements	Infrastructure location
1.	Northern Building – plastic pelletisation process	Steel fabricated shed with concrete floor. Including existing car park, external hardstand area consisting of concrete and asphalt, stormwater infrastructure and firefighting equipment to service the building. Shall contain a concrete hardstand area across the base/floor of the building. 19.5 m x 12 m plastic film receival area. 1 x conveyor located inside the building. 1 x Pelletisation unit located inside the building. 1 x baling machine located inside the building. 20 m x 5 m bulka-bags storage area. Emergency exit signage is to be provided.	Figure 2 of Schedule 1, “Proposed Northern and Southern Buildings, Site Layout”
2.	Southern Building – CDS consolidation process	Steel fabricated shed with concrete floor. Including existing car park and external hardstand area, stormwater infrastructure and firefighting equipment and services to service the building. Shall contain a concrete hardstand area across the base/floor of the building. 1 x baling machine located inside the building. 2 x conveyors located inside the building. Fire-rated roller door to be maintained. Install detectors within 1.5 m of each side of the shutter to initiate its release.	Figure 2 of Schedule 1, “Proposed Northern and Southern Building Site Layout”

	Infrastructure	Design and installation requirements	Infrastructure location
		Emergency exit signage is to be provided.	
3.	All onsite fire management and prevention equipment	<p>Install a thermal camera imaging system within each building.</p> <p>Manual call points to be present within each building, that activate building alarms.</p> <p>Fire hydrant system to be provided to the site that meets GN-04 and AS 2419 requirements.</p> <p>A booster assembly to be provided as part of the existing system to meet GN-04 and AS 2419 requirements.</p> <p>Fire hose reels to be provided throughout the buildings to meet AS 2441 requirements.</p> <p>Portable fire extinguishers to be provided throughout the building as appropriate to address any specific high-risk areas.</p>	None specified.

Compliance reporting

2. The works approval holder must within 30 days of an item of infrastructure or equipment required by conditions 1 being constructed and installed:
 - (a) undertake an audit of their compliance with the requirements of condition 1; and
 - (b) prepare and submit to the CEO an Environmental Compliance Report on that compliance.
3. The Environmental Compliance Report required by condition 2, must include as a minimum the following:
 - (a) certification by a suitably qualified person that the items of infrastructure or component(s) thereof, as specified in conditions 1, have been constructed in accordance with the relevant requirements specified in conditions 1;
 - (b) as constructed plans and a detailed site plan for each item of infrastructure or component of infrastructure specified in conditions 1; and
 - (c) be signed by a person authorised to represent the works approval holder and contains the printed name and position of that person.

Time limited operations phase

Commencement and duration

4. The works approval holder may only commence time limited operations for the pelletisation unit and bailing machine identified in condition 1 where the Environmental Compliance Report as required by condition 2 has been submitted by the works approval holder for that item of infrastructure.
5. The works approval holder may conduct time limited operations for an item of infrastructure specified in condition 1:
 - (a) for a period not exceeding 180 calendar days from the day the works approval holder meets the requirements of condition 4 for that item of infrastructure; or

- (b) until such time as a licence for that item of infrastructure is granted in accordance with Part V of the *Environmental Protection Act 1986*, if one is granted before the end of the period specified in condition 4(a).

Infrastructure and equipment

6. During time limited operations, the works approval holder must ensure that the premises infrastructure and equipment listed in Table 2 is maintained and operated in accordance with the operational requirement set out in Table 2.

Table 2: Infrastructure and equipment requirements during time limited operations

Site infrastructure and equipment	Operational requirements
Premises external carpark, yard and driveway	<ul style="list-style-type: none"> • Shall not be used to store any waste materials. • Impervious hardstand construction. • Must be sloped or the perimeter sufficiently bunded, to contain surface run-off and firewater generated within the premises boundary.
Southern Building – CDS consolidation	<ul style="list-style-type: none"> • Baler must be located on a concrete hardstand area across the base/floor of the buildings. • Bunkers located inside the building for each material stream. • Each material stream will be separately stored in bunkers. • The maximum height of any stockpile, either as loosed piled or baled goods, will not exceed 4.8 m. • The maximum width of any stockpile is to be 20 m. • Lines marked on the walls of the warehouses indicating this height. • Waste handling, sorting, baling, and storage undertaken within the building until bales will be loaded into sea containers for onwards transport to various processing facilities for recycling. • Must be secure at all times to prevent unauthorised access to the building from persons not employed on the premises.
Northern building – plastic pelletisation	<ul style="list-style-type: none"> • Plastic pelletiser must be housed and located within the receival hall. • Baler must be located on a concrete hardstand area across the base/floor of the buildings. • The pelletised plastic finished product will be placed into bulka-bags and temporarily stored pending loading on trucks for off-site transport.

Site infrastructure and equipment	Operational requirements
Northern building – plastic pelletisation	<ul style="list-style-type: none"> • Must be secure at all times to prevent unauthorised access to the building from persons not employed on the premises.
Stormwater drainage system	<ul style="list-style-type: none"> • Bunding must be available to prevent firewater from entering the stormwater drainage system.
Thermal imaging camera Fire hydrants, Fire hose reel system Portable Fire Extinguishers Fire water containment	<ul style="list-style-type: none"> • Thermal imaging camera to be monitored during operations for temperature increases which may indicate fire. • All parts of stockpiled material are not to be within 10 m of fire hydrants. • All fire safety systems should be subject to maintenance inspections prior to the commencement of time limited operations and continued maintenance on a regular basis, in accordance with AS 1851 provisions. • Hydrants must be operated and maintained in accordance with AS 2419.1 • Ensure the hydrant system is enhanced to include a booster assembly at the site entry, in a position compliant with AS 2419.1. • Minimum hydrant flow rate of 10 L/s is provided at suitable pressure in accordance with AS2419.1. • Must have water hose connections with sufficient fire-fighting capacity as required to service the requirements for the two buildings. • Fire hose reels must be operated and maintained in accordance with AS 2441. • Must have deemed to satisfy (DTS) compliant portable fire extinguishers coverage provided to both buildings. • Sufficient portable bunding, absorbent booms and rubber mats (to seal off soak wells) must be available at all times during operations to prevent discharge of firewater to the environment. • All infrastructure maintained in good operational condition.
Fire Safety	<ul style="list-style-type: none"> • Where electric forklifts are to be utilised within the buildings, any charging areas of such equipment is not to occur within a fire compartment in which the subject recycling processes and storage are to occur. • Ensure the fire safety systems are subject to regular and ongoing maintenance, in accordance with AS 1851.

Fire and emergency management

7. The works approval holder must, prior to undertaking time limited operations, prepare and implement a Fire and Emergency Management Plan that is consistent with Australian Standard AS 3745.
8. The plan must include, but is not limited to:
 - (a) notification procedures for fire and major spill incidents;
 - (b) how fires will be prevented, detected, responded to, suppressed, contained and controlled for all approved activities addressing all waste types and for all stages of the waste handling, sorting and storage process;
 - (c) in the event of a fire occurring at the premises, how impacts to the environment and human health will be mitigated;
 - (d) how staff will be trained in fire and emergency response on an ongoing, annual basis;
 - (e) details on the firefighting equipment in place and/or accessible at the premises and the fire response capabilities and responsibilities;
 - (f) a premises map displayed at the front of the premises depicting an after-hours contact detail, plus the location and layout of:
 - (i) fire hose reels, hydrants, sprinklers and isolation points;
 - (ii) electrical isolation points;
 - (iii) sub-surface drainage infrastructure, including details on flow direction and off-site discharge locations (if applicable);
 - (iv) system shutdown points; and
 - (v) fire response access points to the premises.
 - (g) hazmat manifest displayed at front of the premises.

The works approval holder must ensure the fire and emergency management requirements in

9. Table 3 are complied with in the event of a fire.



Table 3: Fire and emergency management requirements

Management Requirement		Fire and emergency management requirements
1.	Firewater containment	<p>(a) Firewater that may result at the premises from fire-fighting activities must be:</p> <ul style="list-style-type: none"> (i) contained on the premises within the capacity of hardstand and low permeability infrastructure; and (ii) does not escape to the premises' stormwater system, soak wells, adjacent premises, or exposed soil areas. <p>(b) Portable bunding must be available to prevent firewater from entering other drains and discharge points.</p> <p>(c) Ensure in the event of fire;</p> <ul style="list-style-type: none"> i. absorbent booms are immediately placed at all entrances to the building that has fire to contain firewater; ii. rubber mats are immediately placed over soakwell drains to prevent firewater ingress. <p>(d) Contingency arrangements must exist for the removal of firewater, in excess of the containment capacity, by a carrier licensed under the <i>Environmental Protection (Controlled Waste) Regulations 2004</i>, to ensure firewater does not discharge to the environment.</p> <p>(e) All water and runoff resulting from the fighting of a fire on the premises must be removed within 24 hours of the extinguishment of that fire.</p>
2.	Fire management	<p>(a) The premises must operate an on-site fire detection system.</p> <p>(b) A sufficient number of fire hoses on the premises must be provided such that all the waste management operational and storage areas can be reached.</p> <p>(c) Ensure that any fire on the premises is extinguished as soon as possible.</p>
3.	Spill management	<p>(a) Spill kits are to be provided, be stocked and maintained.</p> <p>(b) Adequate spill management practices are to be conducted on an as needs basis.</p>
4.	Notifications	Notifications must follow procedures outlined in the Fire and Emergency Management Plan required by Condition 7.

10. The works approval holder must only allow waste to be accepted onto the Premises during time limited operations if:

- (a) It is of a type listed in

- (c) Table 4;
- (d) The quantity accepted is below any limit listed in

- (f) Table 4; and
- (g) It meets any specification listed in

(i) Table 4.



Table 4: Waste acceptance

Waste type	Quantity limit	Acceptance specification
CDS materials	7,000 tonnes per annual period	Limited to aluminum cans, steel cans, HDPE/PET plastic drink bottles, and liquid paper board drink containers.
Inert Waste Type 2	3,000 tonnes per annual period	Limited to plastic film materials.

Monitoring during time limited operations

11. The works approval holder must undertake the monitoring specified in Table 5 during time limited operations.

Table 5: Monitoring of inputs during time limited operations

Waste type	Waste material	Units	Time period
Inert waste Type 1	Steel and aluminium cans	tonnes	Each load accepted at the Premises
Inert Waste Type 2	Plastics: HDPE and PET		
Putrescible waste	Liquid paper board drink containers		

12. The works approval holder must ensure that where waste does not meet the waste acceptance criteria set out in 10, is removed from the premises by the delivery vehicle or, where that is not possible, stored in a quarantined storage area or container and removed to an appropriately authorised facility as soon as practicable.

Noise validation

13. Within 30 days of the commencement of time limited operations, the works approval holder must retain the services of a person qualified and experienced in the area of environmental noise assessment and who by their qualifications and experience is eligible to hold membership of the Australian Acoustical Society or the Australian Association of Acoustical Consultants to:
- investigate the nature and extent of noise emissions from the premises including undertaking noise monitoring during the plastic film pelletisation and CDS consolidation processes within the area at the boundary of the closest noise sensitive human receptor;
 - assess in accordance with the methodology required in the *Environmental Protection (Noise) Regulations 1997*, the compliance of the noise emissions from the primary activities, against the relevant assigned levels specified in those Regulations; and
 - compile and submit to the works approval holder within 30 days of the completion date of time limited operations, a report in accordance with condition 14.

- 14.** A report prepared pursuant to condition 13(c) is to include:
- (a) a description of the methods used for monitoring and/or modelling of noise emissions from the premises;
 - (b) details and the results of the investigation undertaken pursuant to condition 13(a);
 - (c) details and results of the assessment of the noise emissions from the premises, against the relevant assigned levels in the *Environmental Protection (Noise) Regulations 1997* undertaken pursuant to condition 13(b).

Compliance reporting

- 15.** The works approval holder must submit to the CEO a report on the time limited operations within 30 days of the completion date of time limited operations or 30 calendar days before the expiration date of the works approval, whichever is the sooner.
- 16.** The works approval holder must ensure the report required by condition 14 includes the following;
- (a) A summary of the time limited operations, including timeframes and amount of material processed;
 - (b) A review of operational performance and compliance against the conditions of the works approval and the Environmental Compliance Report; and
 - (c) Where the manufacturer's design specifications and the conditions of this works approval have not been met, what measures will the works approval holder take to meet them, and what timeframes will be required to implement those measures.

Records and reporting (general)

- 17.** The works approval holder must record the following information in relation to complaints received by the works approval holder (whether received directly from a complainant or forwarded to them by the Department or another party) about any alleged emissions from the premises:
- (a) the name and contact details of the complainant, (if provided);
 - (b) the time and date of the complaint;
 - (c) the complete details of the complaint and any other concerns or other issues raised; and
 - (d) the complete details and dates of any action taken by the works approval holder to investigate or respond to any complaint.
- 18.** The works approval holder must maintain accurate and auditable books including the following records, information, reports, and data required by this works approval:
- (a) the works conducted in accordance with condition 1;
 - (b) any maintenance of infrastructure that is performed in the course of complying with condition 6;
 - (c) monitoring programmes undertaken in accordance with condition 11; and
 - (d) complaints received under condition 17.

- 19.** The books specified under condition 18 must:
- (a) be legible;
 - (b) if amended, be amended in such a way that the original version(s) and any subsequent amendments remain legible and are capable of retrieval;
 - (c) be retained by the works approval holder for the duration of the works approval; and
 - (d) be available to be produced to an inspector or the CEO as required.

Definitions

In this works approval, the terms in Table 6 have the meanings defined.

Table 6: Definitions

Term	Definition
annual period	a 12-month period commencing from 1 July until 30 June of the immediately following year.
AS 1851	means the Australian Standard <i>AS/NZS 1851 Routine service of fire protection systems and equipment</i> , as amended from time to time
AS 2419	means the Australian Standard <i>AS/NZS 2419.1 Fire hydrant installations system design, installation and commissioning</i> , as amended from time to time
AS 2441	means the Australian Standard <i>AS/NZS 2441 installation of fire hose reels</i> , as amended from time to time
AS 3745	means the Australian Standard <i>AS/NZS 3745 , Planning for Emergencies in Facilities</i> , as amended from time to time
books	has the same meaning given to that term under the EP Act.
CDS	Container deposit scheme
CEO	means Chief Executive Officer. CEO for the purposes of notification means: Director General Department administering the <i>Environmental Protection Act 1986</i> Locked Bag 10 Joondalup DC WA 6919 info@dwer.wa.gov.au
Department	means the department established under section 35 of the <i>Public Sector Management Act 1994</i> and designated as responsible for the administration of Part V Division 3 of the EP Act.
discharge	has the same meaning given to that term under the EP Act.
emission	has the same meaning given to that term under the EP Act.
Environmental Compliance Report	means a report to satisfy the CEO that the conditioned infrastructure and/or equipment has been constructed and/or installed in accordance with the works approval.
EP Act	<i>Environmental Protection Act 1986 (WA)</i> .
EP Regulations	<i>Environmental Protection Regulations 1987 (WA)</i> .

Term	Definition
GN-04	means Guidance Note: GN04 <i>Fire Prevention and Management in a Recycling Facility</i> .
premises	the premises to which this works approval applies, as specified at the front of this works approval and as shown on the premises map (Figure 1) in Schedule 1 to this works approval.
prescribed premises	has the same meaning given to that term under the EP Act.
time limited operations	refers to the operation of the infrastructure and equipment identified under this works approval that is authorised for that purpose, subject to the relevant conditions.
waste	has the same meaning given to that term under the EP Act.
works approval	refers to this document, which evidences the grant of the works approval by the CEO under section 54 of the EP Act, subject to the conditions. Ext linksks
works approval holder	refers to the occupier of the premises being the person to whom this works approval has been granted, as specified at the front of this works approval.

END OF CONDITIONS

Schedule 1: Maps

Premises map

The boundary of the prescribed premises is shown in the map below (Figure 1).

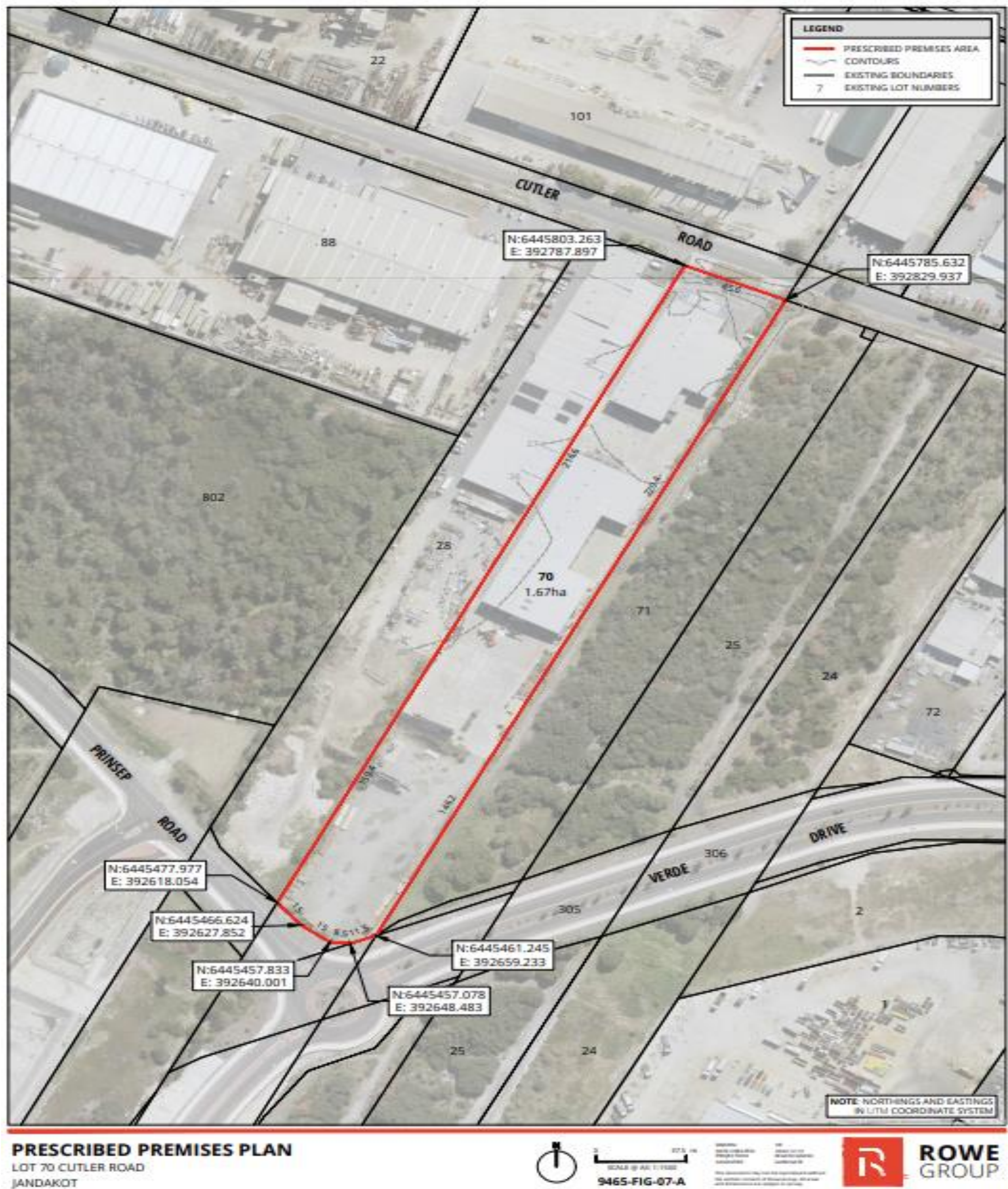


Figure 1: Map of the boundary of the prescribed premises

39 Cutler Road, Jandakot Proposed Northern and Southern Buildings and Site Layout

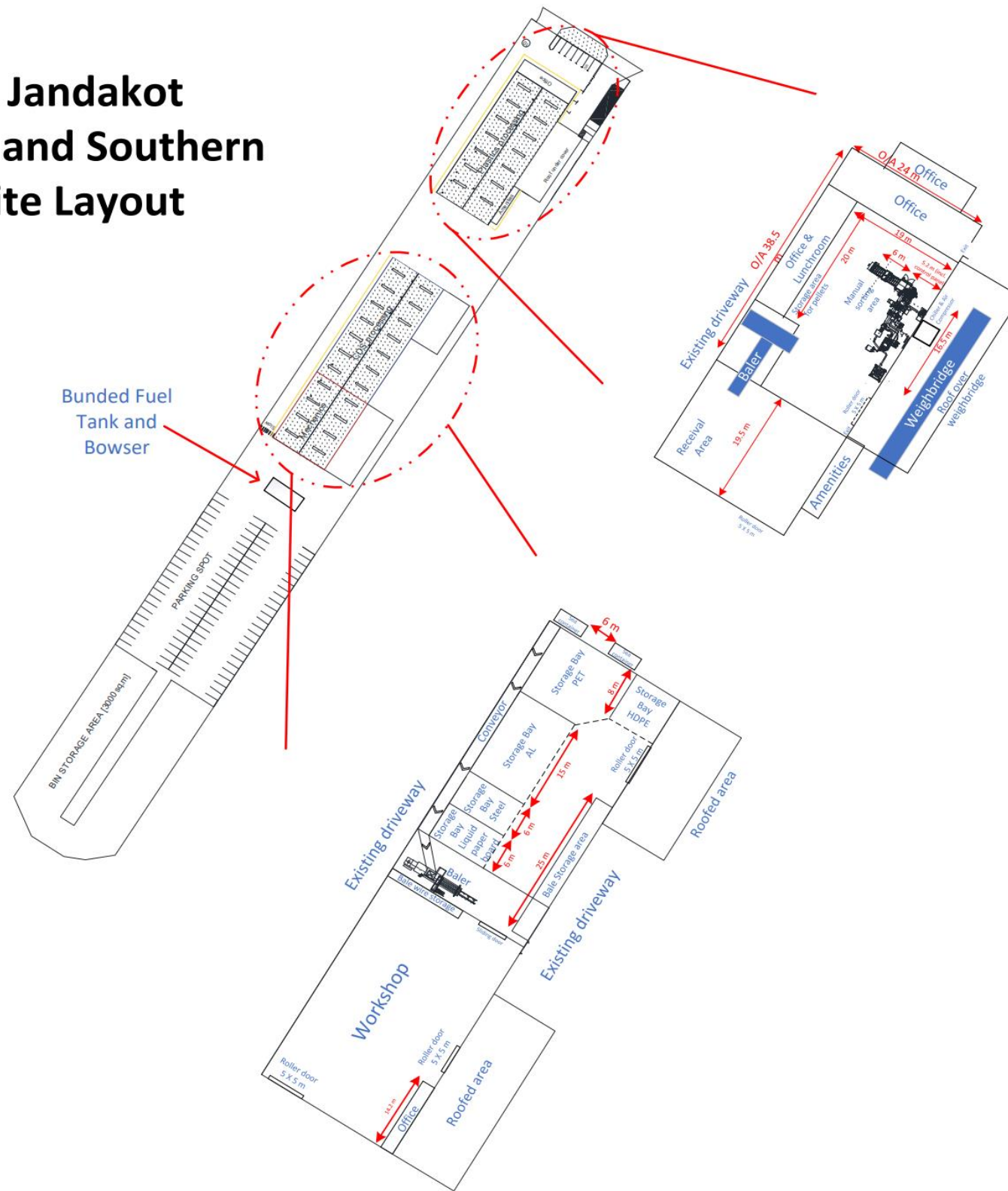


Figure 2: Site Layout