



<b>Works approval number</b>	W6442/2020/1
<b>Works approval holder</b>	Fenix Shine Pty Ltd
<b>ACN</b>	668 900 061
<b>Registered business address</b>	1202 Hay Street, West Perth, WA 6005
<b>DWER file number</b>	DER2020/000431
<b>Duration</b>	22/12/2020 to 21/12/2025
<b>Date of transfer</b>	23/08/2023
<b>Premises details</b>	Shine Iron Ore Project Crushing and Screening Plant Part of mining tenements M59/406 and M59/421 YALGOO WA 6635 As defined by the coordinates in Schedule 2

<b>Prescribed premises category description (Schedule 1, <i>Environmental Protection Regulations 1987</i>)</b>	<b>Assessed production capacity</b>
Category 5: Processing or beneficiation of metallic or non-metallic ore.	3,000,000 tonnes per annual period

This transferred works approval is granted to the works approval holder, subject to the attached conditions, on 23 August 2023, by:

**A/SENIOR ENVIRONMENTAL OFFICER, INDUSTRY REGULATION  
REGULATORY SERVICES**

an officer delegated under section 20 of the *Environmental Protection Act 1986* (WA)

## Works approval history

Date	Reference number	Summary of changes
22/12/2020	W6442/2020/1	Works approval granted.
23/08/2023	W6442/2020/1	Works approval transferred from Mount Gibson Mining Limited to Fenix Shine Pty Ltd.

## Interpretation

In this works approval:

- (a) the words 'including', 'includes' and 'include' in conditions mean "including but not limited to", and similar, as appropriate;
- (b) where any word or phrase is given a defined meaning, any other part of speech or other grammatical form of that word or phrase has a corresponding meaning;
- (c) where tables are used in a condition, each row in a table constitutes a separate condition;
- (d) any reference to an Australian or other standard, guideline, or code of practice in this works approval:
  - (i) if dated, refers to that particular version; and
  - (ii) if not dated, refers to the latest version and therefore may be subject to change over time;
- (e) unless specified otherwise, any reference to a section of an Act refers to that section of the EP Act; and
- (f) unless specified otherwise, all definitions are in accordance with the EP Act.

**NOTE:** This works approval requires specific conditions to be met but does not provide any implied authorisation for other emissions, discharges, or activities not specified in this works approval.

# Works approval conditions

The works approval holder must ensure that the following conditions are complied with:

## Construction phase

### Infrastructure and equipment

1. The works approval holder must:
  - (a) construct and/or install the infrastructure;
  - (b) in accordance with the corresponding design and construction requirements; and
  - (c) at the corresponding infrastructure location as set out in Table 1.

**Table 1: Construction requirements**

	Infrastructure	Construction / Installation requirements	Infrastructure location
1.	Crushing and screening plant	Layout of crushing and screening plant as per Figure 3, Schedule 1.  Installed as per the manufacturer's requirements.  Dust suppression water sprays installed at crusher dump bin.	Figure 2, Schedule 1.
2.	Operational area	Bunded areas (surrounding chemical and material storage) to have a minimum capacity of 110% of the largest container stored within it, or 25% of the volume of all containers, whichever is larger.  Area graded towards stormwater detention ponds.  Surface water diversions to be constructed to divert clean surface water flow around operational areas. Culverts used where drains cross roads.	Figure 2, Schedule 1.
3.	Stormwater retention ponds	Combined design capacity of the two stormwater retention ponds to be sized to contain a 1/100 year, 72 hour rain fall event.  Each pond to be sized 55m long x 55m wide and 3.5m deep.  Excavated below natural ground level and with an inflow point to ensure drainage into pond.	Figure 2, Schedule 1.

### Compliance reporting

2. The works approval holder must within 30 calendar days of an item of infrastructure or equipment required by condition 1 being installed:
  - (a) undertake an audit of their compliance with the requirements of condition 1; and
  - (b) prepare and submit to the CEO an Environmental Compliance Report on that compliance.

3. The Environmental Compliance Report required by condition 2, must include as a minimum the following:
  - (a) certification by a suitably qualified and experienced Engineer (eligible for membership of the Institute of Engineers, Australia) that the items of infrastructure or component(s) thereof, as specified in condition 1, have been constructed in accordance with the relevant requirements specified in condition 1;
  - (b) as constructed plans and a detailed site plan for each item of infrastructure or component of infrastructure specified in condition 1; and
  - (c) be signed by a person authorised to represent the works approval holder and contains the printed name and position of that person.

## Time limited operations phase

### Commencement and duration

4. The works approval holder may only commence time limited operations for an item of infrastructure specified in condition 1 where the Environmental Compliance Report as required by condition 2 has been submitted by the works approval holder for that item of infrastructure.
5. The Works approval holder may conduct time limited operations for an item of infrastructure specified in condition 1 (as applicable):
  - (a) for a period not exceeding 90 calendar days from the day the works approval holder meets the requirements of condition 4 for that item of infrastructure; or
  - (b) until such time as a licence for that item of infrastructure is granted in accordance with Part V of the *Environmental Protection Act 1986*.

### Time limited operations requirements and emission limits

6. During time limited operations, the Works approval holder must ensure that the premises infrastructure listed in Table 2 and located at the corresponding infrastructure location is maintained and operated in accordance with the corresponding operational requirement set out in Table 2.

**Table 2: Infrastructure and equipment requirements during time limited operations**

Site infrastructure	Operational requirement	Infrastructure location
Crushing and screening plant	Maintain as per manufacturer's specifications. Dust suppression using sprinklers. Record volume of ore processed during time limited operations.	Figure 2, Schedule 1.
Stormwater detention ponds	Freeboard to be maintained at a minimum of 500mm.  To be pumped out if a hydrocarbon sheen is present and contaminated water contained for appropriate disposal off-site by a licensed waste disposal service.  Maintenance to remove captured sediment	Figure 2, Schedule 1.

Site infrastructure	Operational requirement	Infrastructure location
	where required.	
Operational area	<p>Store environmentally harmful materials in secured, covered, impervious and bunded areas with spill kits alongside.</p> <p>Bunded areas (surrounding chemical and material storage) to have a minimum capacity of 110% of the largest container stored within it, or 25% of the volume of all containers, whichever is larger.</p> <p>Surface water diversions to be used to divert clean surface water flow around operational areas. Culverts to be used where drains cross roads.</p>	Figure 2, Schedule 1.

### Monitoring during time limited operations

7. The works approval holder must monitor treated wastewater emissions during time limited operations in accordance with Table 3.

**Table 3: Emissions and discharge monitoring during time limited operations**

Discharge point	Monitoring location	Parameter	Frequency	Averaging period	Units
Oily water separator at washdown bay/workshops	Washdown bay recycled water tanks	Total Recoverable Hydrocarbons	Monthly	Spot sample	mg/L

8. The works approval holder must ensure that all monitoring equipment used on the premises to comply with the conditions of this works approval is calibrated in accordance with the manufacturer's specifications.
9. The works approval holder must ensure that all laboratory samples are submitted to and tested by a laboratory with current NATA accreditation for the parameters being measured (unless indicated otherwise in the relevant table).
10. The works approval holder must ensure that all samples are collected in such a way that complies with AS 5667.1 standards for water sampling and preservation.
11. The works approval holder must record the results of all monitoring activity required by condition 7.

### Compliance reporting

12. The works approval holder must submit to the CEO a report on the time limited operations within 30 calendar days of the completion date of time limited operations.
13. The works approval holder must ensure the report required by condition 12 includes the following;
- (a) a summary of the time limited operations, including timeframes and amount of material processed;

- (b) a summary of the environmental performance of all infrastructure as constructed or installed;
- (c) monitoring data required by condition 7;
- (d) a review of performance and compliance against the conditions of the works approval; and
- (e) where the manufacturer's design specifications and the conditions of this works approval have not been met, what measures will the works approval holder take to meet them, and what timeframes will be required to implement those measures.

## Records and reporting (general)

- 14.** The works approval holder must record the following information in relation to complaints received by the works approval holder (whether received directly from a complainant or forwarded to them by the Department or another party) about any alleged emissions from the premises:
  - (a) the name and contact details of the complainant, (if provided);
  - (b) the time and date of the complaint;
  - (c) the complete details of the complaint and any other concerns or other issues raised; and
  - (d) the complete details and dates of any action taken by the works approval holder to investigate or respond to any complaint.
- 15.** The works approval holder must maintain accurate and auditable books including the following records, information, reports, and data required by this works approval:
  - (a) the works conducted in accordance with condition 1;
  - (b) any maintenance of infrastructure that is performed in the course of complying with condition 6; and
  - (c) complaints received under condition 14.
- 16.** The books specified under condition 15 must:
  - (a) be legible;
  - (b) if amended, be amended in such a way that the original version(s) and any subsequent amendments remain legible and are capable of retrieval;
  - (c) be retained by the works approval holder for the duration of the works approval; and
  - (d) be available to be produced to an inspector or the CEO as required.

## Definitions

In this works approval, the terms in Table 4 have the meanings defined.

**Table 4: Definitions**

Term	Definition
annual period	a 12 month period commencing from 1 July until 30 June of the immediately following year.
AS 5667.1	means the Australian Standard AS/NZS 5667.1 Water Quality – Sampling – <i>Guidance on the design of sampling programs, sampling techniques and the preservation and handling of samples.</i>
Averaging period	means the time over which a limit is measured or a monitoring result is obtained.
books	has the same meaning given to that term under the EP Act.
CEO	means Chief Executive Officer. CEO for the purposes of notification means: Director General Department administering the <i>Environmental Protection Act 1986</i> Locked Bag 10 Joondalup DC WA 6919 <a href="mailto:info@dwer.wa.gov.au">info@dwer.wa.gov.au</a>
Department	means the department established under section 35 of the <i>Public Sector Management Act 1994</i> and designated as responsible for the administration of Part V Division 3 of the EP Act.
discharge	has the same meaning given to that term under the EP Act.
emission	has the same meaning given to that term under the EP Act.
Environmental Compliance Report	means a report to satisfy the CEO that the conditioned infrastructure has been constructed and/or installed in accordance with the works approval.
EP Act	<i>Environmental Protection Act 1986</i> (WA).
EP Regulations	<i>Environmental Protection Regulations 1987</i> (WA).
NATA	National Association of Testing Authorities, Australia
NATA accredited	means in relation to the analysis of a sample that the laboratory is NATA accredited for the specified analysis at the time of the analysis
premises	the premises to which this licence applies, as specified at the

Term	Definition
	front of this licence and as shown on the premises map (Figure 1) in Schedule 1 to this works approval.
prescribed premises	has the same meaning given to that term under the EP Act.
time limited operations	refers to the operation of the infrastructure and equipment identified under this works approval that is authorised for that purpose, subject to the relevant conditions.
spot sample	means a discrete sample representative of the time and place at which the sample is taken
works approval	refers to this document, which evidences the grant of the works approval by the CEO under section 54 of the EP Act, subject to the conditions.
works approval holder	refers to the occupier of the premises being the person to whom this works approval has been granted, as specified at the front of this works approval.

---

**END OF CONDITIONS**



Schedule 1: Maps

Premises map

The boundary of the prescribed premises is shown in the map below (Figure 1). The prescribed premises area is shaded in yellow.

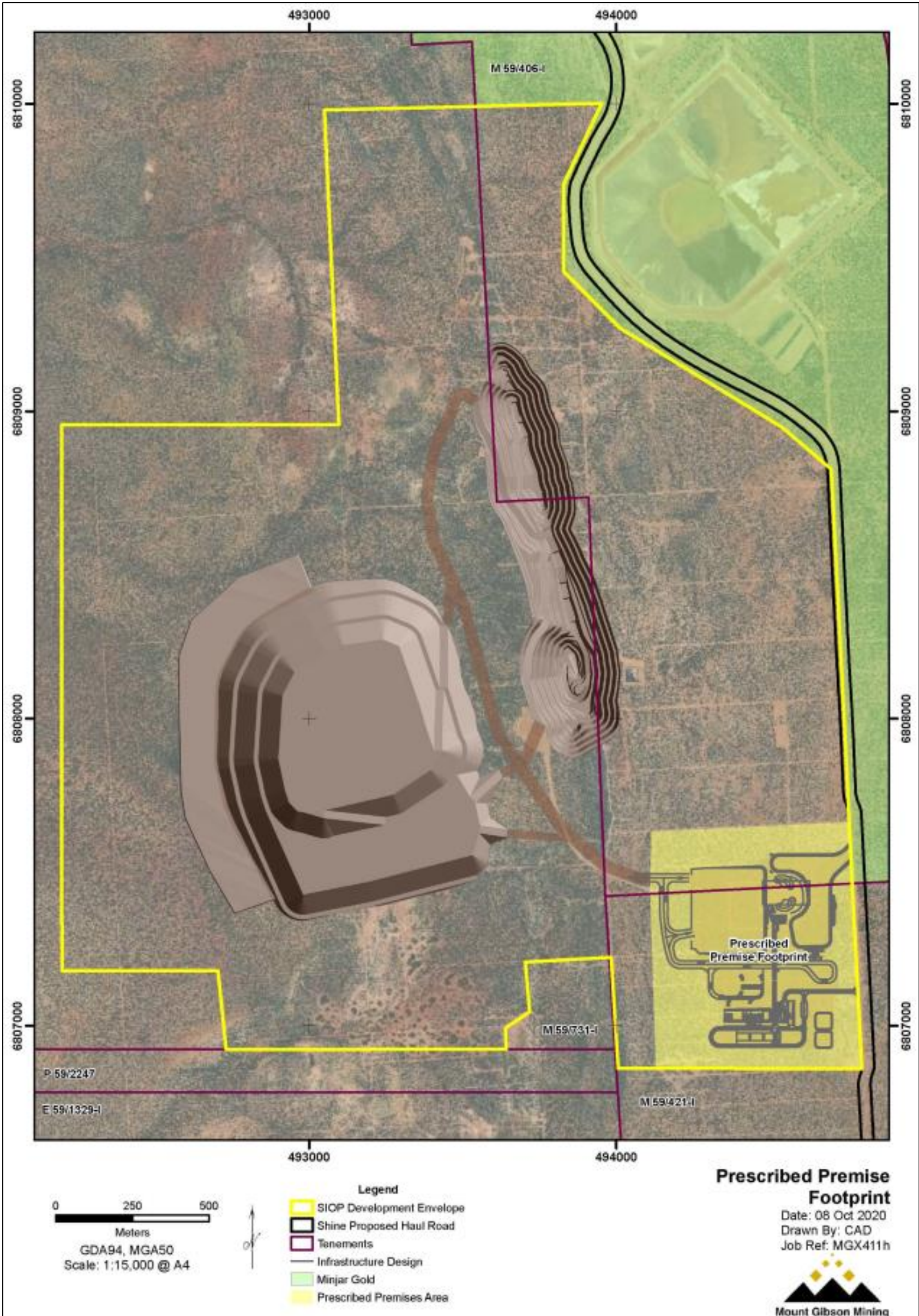


Figure 1: Map of the boundary of the prescribed premises



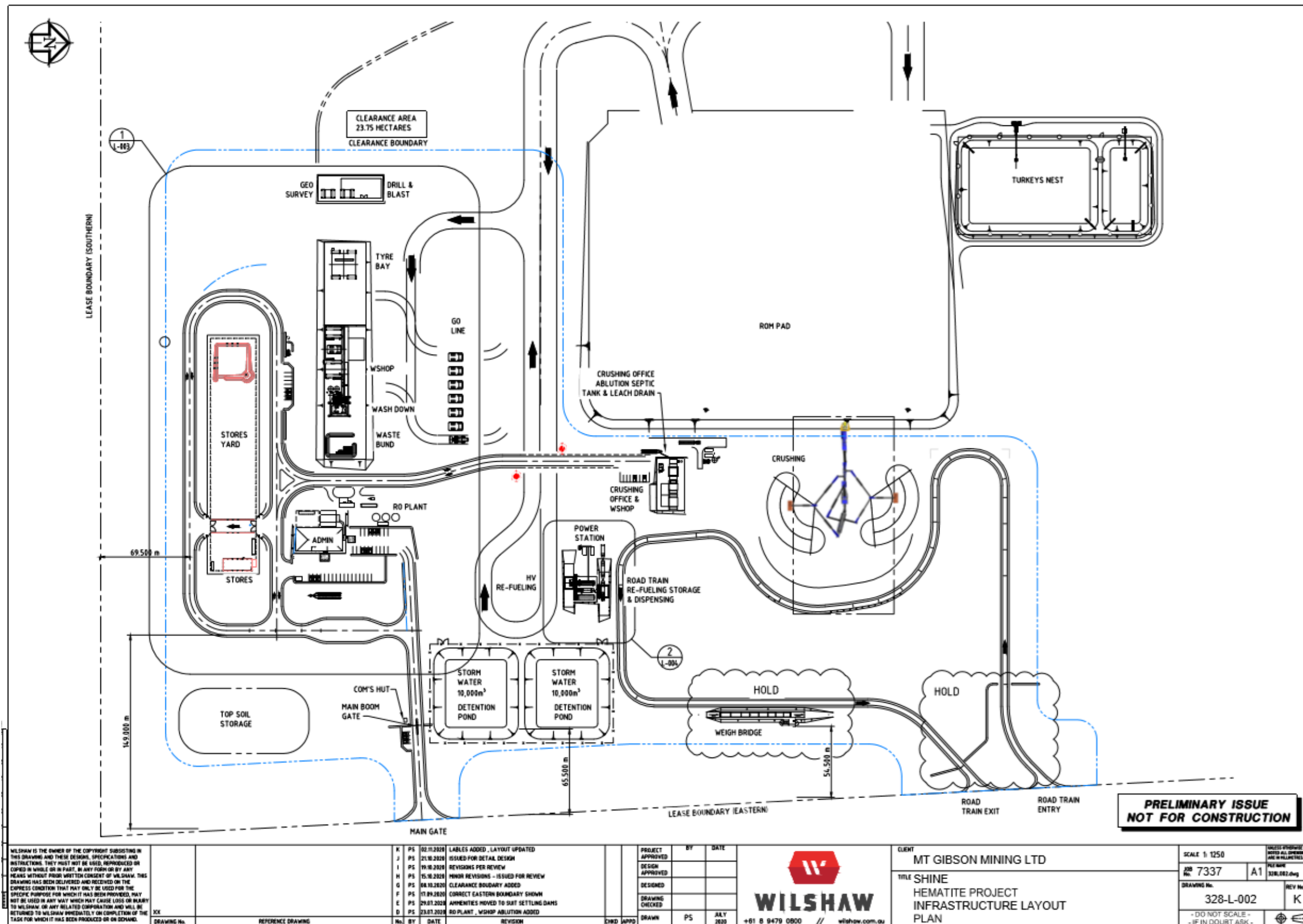


Figure 2: Layout of Operational area

W6442/2020/1

IR-T05 Works approval template (v5.0) (February 2020)

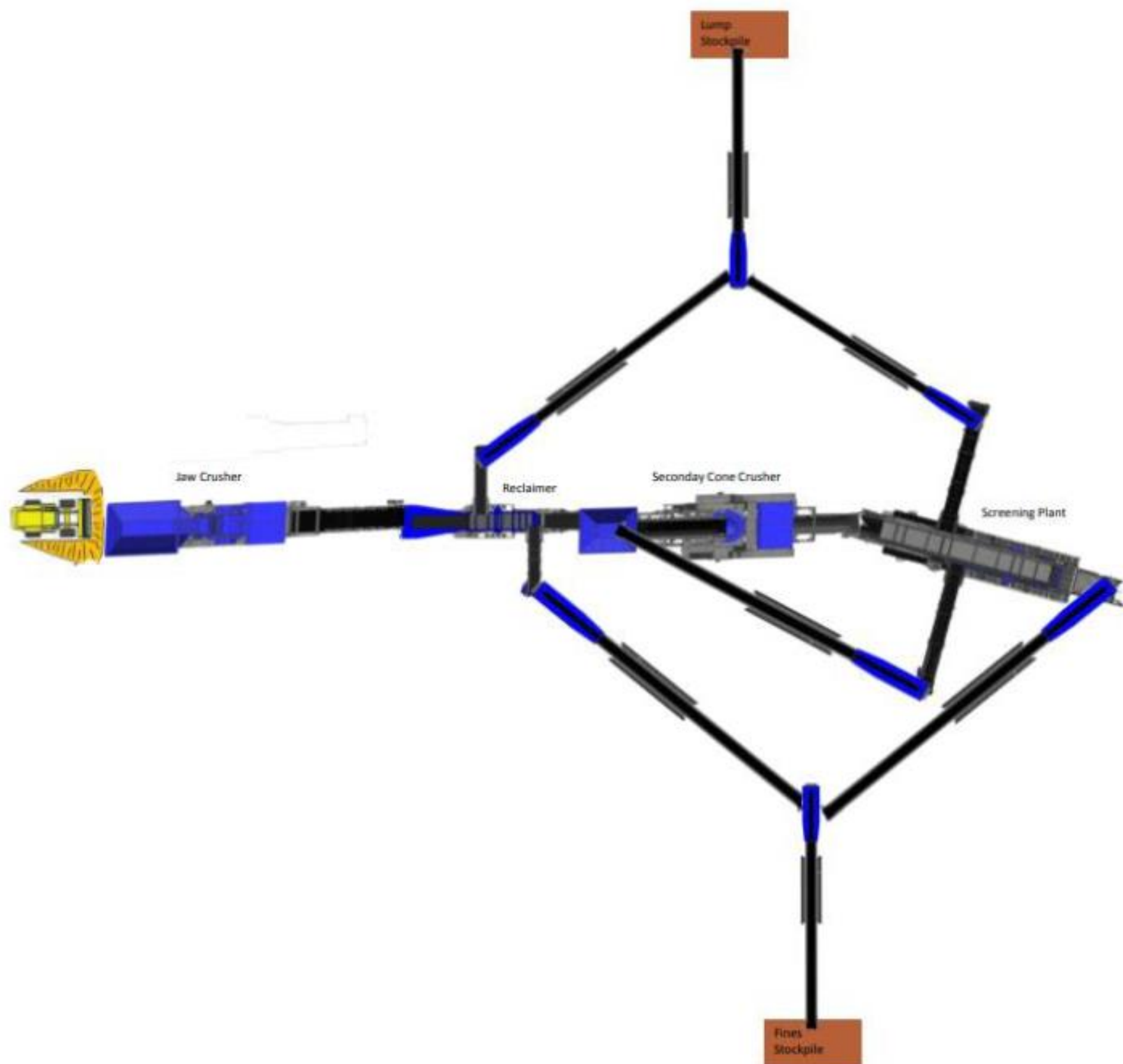


Figure 3: Layout of crushing and screening plant

## Schedule 2: Premises boundary

The premises boundary is defined by the coordinates in Table 5.

**Table 5: Premises boundary coordinates (GDA 1994)**

Point location	Latitude	Longitude
Top left	116.939642	-28.859017
Top right	116.946255	-28.858736
Bottom right	116.946686	-28.865978
Bottom left	116.93979	-28.85975