



<b>Works approval number</b>	W6785/2023/1
<b>Works approval holder</b>	CSBP Limited
<b>ACN</b>	008 668 371
<b>Registered business address</b>	Level 14, Tower 2 Brookfield Place 123 St Georges Terrace PERTH WA 6000
<b>DWER file number</b>	DER2018/001042-8~89
<b>Duration</b>	12/06/2023 to 11/06/2026
<b>Date of issue</b>	12 June 2023
<b>Premises details</b>	CSBP Albany Fertiliser Depot A portion of Lot 201 on Plan 76615 198 Hanrahan Road ALBANY WA 6330 as defined by the coordinates in Schedule 1

<b>Prescribed premises category description</b> (Schedule 1, <i>Environmental Protection Regulations 1987</i> )	<b>Assessed production capacity</b>
Category 33: Chemical blending or mixing: premises on which chemicals or chemical products are mixed, blended or packaged in a manner that causes or is likely to cause a discharge of waste into the environment.	416, 000 tonnes per annual period

This works approval is granted to the works approval holder, subject to the attached conditions, on 12 June 2023, by:

**Manager, Process Industries**

an officer delegated under section 20 of the *Environmental Protection Act 1986* (WA)

## Interpretation

In this works approval:

- (a) the words 'including', 'includes' and 'include' in conditions mean "including but not limited to", and similar, as appropriate;
- (b) where any word or phrase is given a defined meaning, any other part of speech or other grammatical form of that word or phrase has a corresponding meaning;
- (c) where tables are used in a condition, each row in a table constitutes a separate condition;
- (d) any reference to an Australian or other standard, guideline, or code of practice in this works approval:
  - (i) if dated, refers to that particular version; and
  - (ii) if not dated, refers to the latest version and therefore may be subject to change over time;
- (e) unless specified otherwise, any reference to a section of an Act refers to that section of the EP Act; and
- (f) unless specified otherwise, all definitions are in accordance with the EP Act.

**NOTE:** This works approval requires specific conditions to be met but does not provide any implied authorisation for other emissions, discharges, or activities not specified in this works approval.

# Works approval conditions

The works approval holder must ensure that the following conditions are complied with:

## Construction phase

### Infrastructure and equipment

1. The works approval holder must:
  - (a) construct and/or install the infrastructure;
  - (b) in accordance with the corresponding design and construction / installation requirements; and
  - (c) at the corresponding infrastructure location as set out in Table 1.

**Table 1: Design and construction / installation requirements**

	Infrastructure	Design and construction / installation requirements	Infrastructure location
1.	<p>Chemical treatment plant (CTP) as per schematic layout as depicted in Schedule 1, Figure 5.</p> <p>CTP comprises:</p> <ul style="list-style-type: none"> <li>• A double-walled, self-bunded polyethylene tank with a 3,300L capacity containing ferric chloride coagulant.</li> <li>• Two 3,300L double walled, self-bunded polyethylene tanks containing hydrochloric acid and flocculant polymer respectively.</li> <li>• Three lamella clarifiers, each with a capacity of 5 litres per second (L/s).</li> <li>• Pumps, pipes and associated overflow drainage infrastructure.</li> <li>• 45 Kilovolt-amps (kVA), self-bunded three-phase diesel generator</li> <li>• A 1000L fuel tank containing diesel for the generator.</li> <li>• Flow meter</li> <li>• Sludge bed</li> <li>• Granulated activated carbon (GAC) filter</li> </ul>	<ol style="list-style-type: none"> <li>a) CTP must be designed to be capable of achieving the following final wastewater treatment quality:               <ul style="list-style-type: none"> <li>- pH 4.5 to 5.5</li> <li>- TP &lt; 3mg/L</li> <li>- DOC &lt;20mg/L</li> </ul> </li> <li>b) All infrastructure listed within the CTP must be stored on an impervious surface lined with high density polyethylene (HDPE).</li> <li>c) The HDPE liner must be curbed to direct stormwater to the lined drain.</li> <li>d) Chemical dosing manifold and storage tanks must be self-bunded and chemical dosing pipework must be sleeved.</li> <li>e) Pipework must be a combination of either HDPE piping or certified (pressure-rated) 100-millimetre (mm) diameter rubber hoses no greater than 6m in length.</li> <li>f) No hoses will be joined together, and all fittings must be flanged and bolted with torque wrenches to manufacturer's specifications.</li> <li>g) All HDPE pipe couplings must be electrofusion welded and pressure tested prior to commissioning.</li> <li>h) Diesel generator must be constructed with a steel frame to provide collision protection.</li> <li>i) Flow meter must be capable of measuring cumulative flows of treated wastewater discharged from CTP to lined pond SW11</li> </ol>	<p>As depicted in Schedule 1, Figure 3.</p> <p>Labelled as: 'Chemical dosing and sludge recovery'"</p>

## Compliance reporting

2. The works approval holder must within 30 calendar days of an item of infrastructure or equipment required by condition 1 being constructed and/or installed:
  - (a) undertake an audit of their compliance with the requirements of condition 1; and
  - (b) prepare and submit to the CEO an Environmental Compliance Report on that compliance.
3. The Environmental Compliance Report required by condition 2, must include as a minimum the following:
  - (a) certification by the works approval holder that the items of infrastructure or component(s) thereof, as specified in condition 1 have been constructed in accordance with the relevant requirements specified in condition 1;
  - (b) as constructed plans and a detailed site plan for each item of infrastructure or component of infrastructure specified in condition 1; and
  - (c) be signed by a person authorised to represent the works approval holder and contains the printed name and position of that person.

## Time limited operations phase

### Commencement and duration

4. The works approval holder may only commence time-limited operations for infrastructure identified in condition 1, where:
  - a) the Environmental Compliance Report as required by condition 2 has been submitted by the works approval holder; and
  - b) that infrastructure has been certified in accordance with requirements of condition 3.
5. The works approval holder may conduct time limited operations for the infrastructure specified in condition 1 for a period not exceeding 545 calendar days from the day the works approval holder submits the Environmental Compliance Report specified in condition 2.

### Time-limited operations requirements

6. During time limited operations, the works approval holder must ensure that the premises infrastructure listed in Table 2 is maintained and operated in accordance with the corresponding operational requirements set out in Table 2.

**Table 2: Infrastructure operational requirements during time limited operations**

	Infrastructure	Operational requirements
1.	Chemical treatment plant (CTP) infrastructure as outlined in Table 1	a) Overflow of sludge leachate generated from the CTP and any spillages must be directed to lined pond SW11. b) All wastewater directed to SW11 must flow through the flow meter. c) Flow meter must be maintained to enable continuous, accurate monitoring of wastewater volumes discharged to lined pond SW11. d) Sludge from the CTP and WWTP must be disposed off-site by a licensed waste carrier. e) Precipitate sludge must be batch tested to ensure the sludge meets Class II waste class characteristics prior to removal from site for disposal. f) GAC filters and lamella clarifiers must be maintained to enable the filtration of DOC and sludge.

## Records and reporting (general)

7. The works approval holder must record the following information in relation to complaints received by the works approval holder (whether received directly from a complainant or forwarded to them by the Department or another party) about any alleged emissions from the premises:
  - (a) the name and contact details of the complainant, (if provided);
  - (b) the time and date of the complaint;
  - (c) the complete details of the complaint and any other concerns or other issues raised; and
  - (d) the complete details and dates of any action taken by the works approval holder to investigate or respond to any complaint.
8. The works approval holder must maintain accurate and auditable books including the following records, information, reports, and data required by this works approval:
  - (a) the works conducted in accordance with condition 1;
  - (b) any maintenance of infrastructure that is performed in the course of complying with condition 1; and
  - (c) complaints received under condition 7.
9. The books specified under condition 8 must:
  - (a) be legible;
  - (b) if amended, be amended in such a way that the original version(s) and any subsequent amendments remain legible and are capable of retrieval;
  - (c) be retained by the works approval holder for the duration of the works approval; and
  - (d) be available to be produced to an inspector or the CEO as required.

## Definitions

In this works approval, the terms in Table 3 have the meanings defined.

**Table 3: Definitions**

Term	Definition
books	has the same meaning given to that term under the EP Act.
CEO	means Chief Executive Officer. CEO for the purposes of notification means: Director General Department administering the <i>Environmental Protection Act 1986</i> Locked Bag 10 Joondalup DC WA 6919 <a href="mailto:info@dwer.wa.gov.au">info@dwer.wa.gov.au</a>
Department	means the department established under section 35 of the <i>Public Sector Management Act 1994</i> and designated as responsible for the administration of Part V Division 3 of the EP Act.
DOC	Dissolved Organic Carbon
discharge	has the same meaning given to that term under the EP Act.
emission	has the same meaning given to that term under the EP Act.
Environmental Compliance Report	means a report to satisfy the CEO that the conditioned infrastructure has been constructed and/or installed in accordance with the works approval.
EP Act	<i>Environmental Protection Act 1986 (WA)</i> .
HDPE	high density polyethylene
kL	kilolitres
leachate	means liquid released by or water that has percolated through waste and which contains some of its constituents.
mg/L	mg/L
NATA	means the (Australian) National Association of Testing Authorities
premises	the premises to which this works approval applies, as specified at the front of this works approval and as shown on the premises map (Figure 1) in Schedule 1 to this works approval.
prescribed premises	has the same meaning given to that term under the EP Act.
time limited operations	refers to the operation of the infrastructure and equipment identified under this works approval that is authorised for that purpose, subject to the relevant conditions.
works approval	refers to this document, which evidences the grant of the works approval by the CEO under section 54 of the EP Act, subject to the conditions.
works approval holder	refers to the occupier of the premises being the person to whom this works approval has been granted, as specified at the front of this works approval.

---

**END OF CONDITIONS**



## Schedule 1: Maps

The boundary of the prescribed premises is shown in red in the map below



Figure 1: Prescribed premises boundary

W6785/2023/1 (12/06/2023)



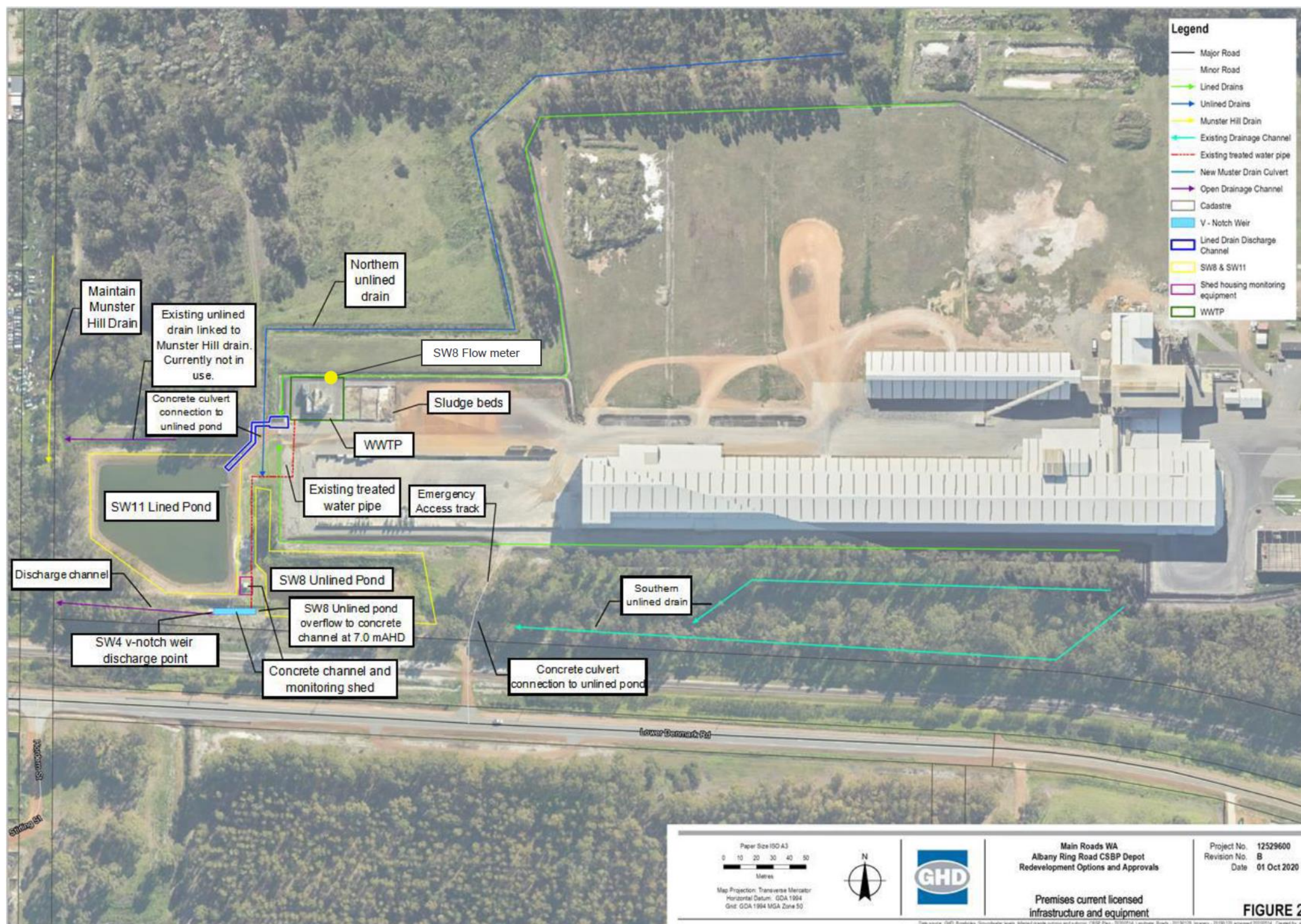


Figure 2: Location of existing site infrastructure

W6785/2023/1 (12/06/2023)



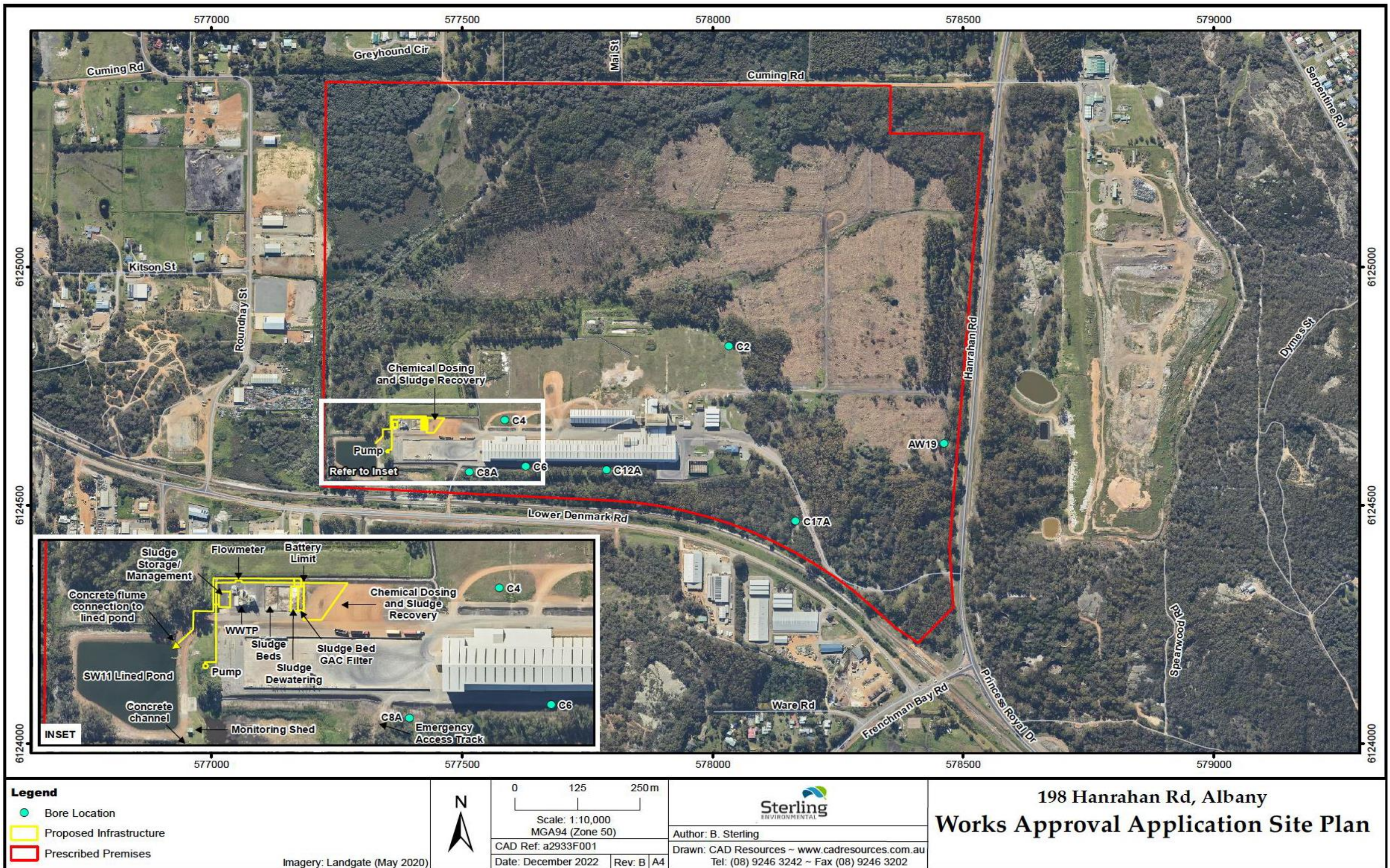


Figure 3: Location of proposed chemical treatment plant infrastructure



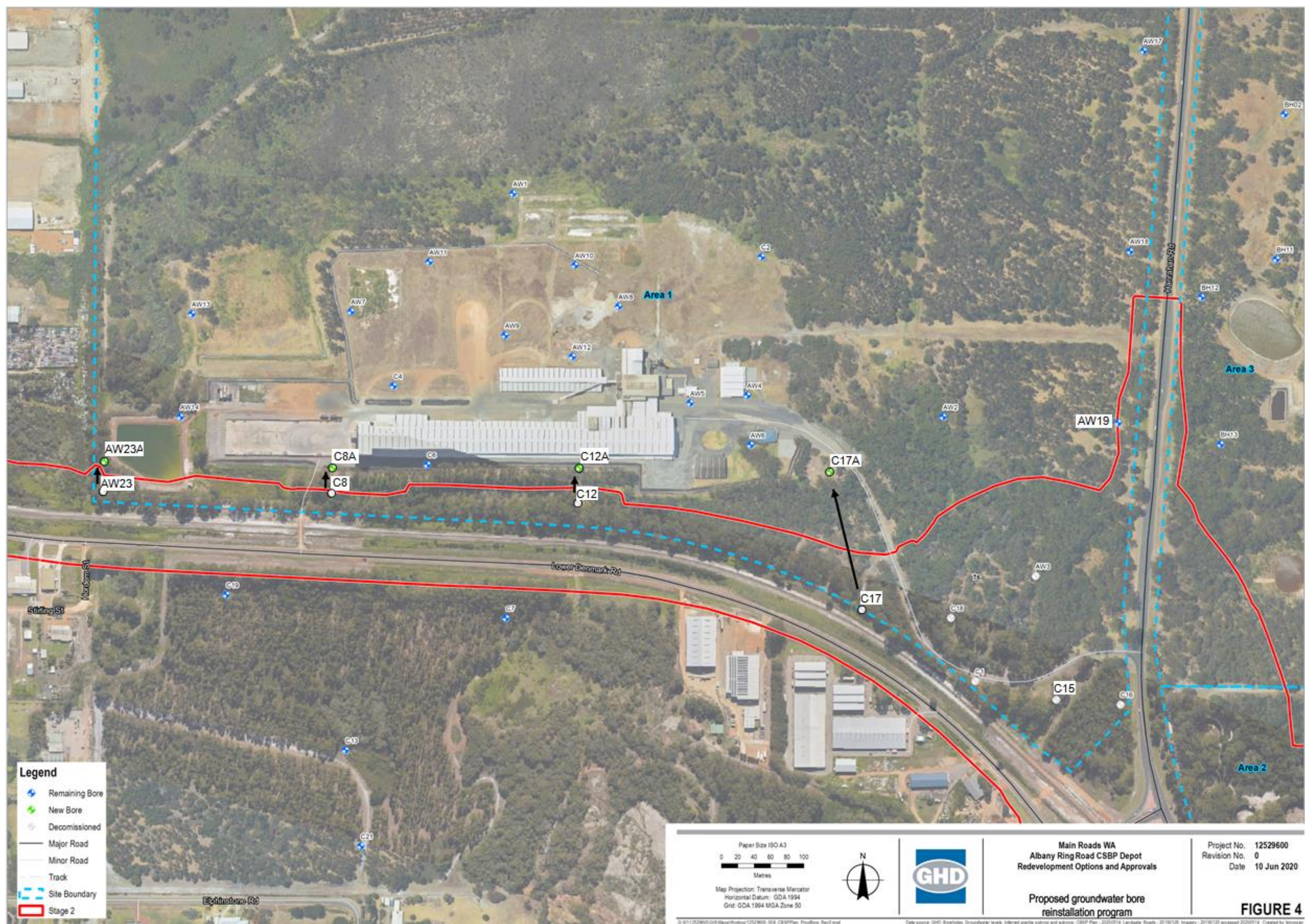


Figure 4: Map of groundwater monitoring well locations

W6785/2023/1 (12/06/2023)



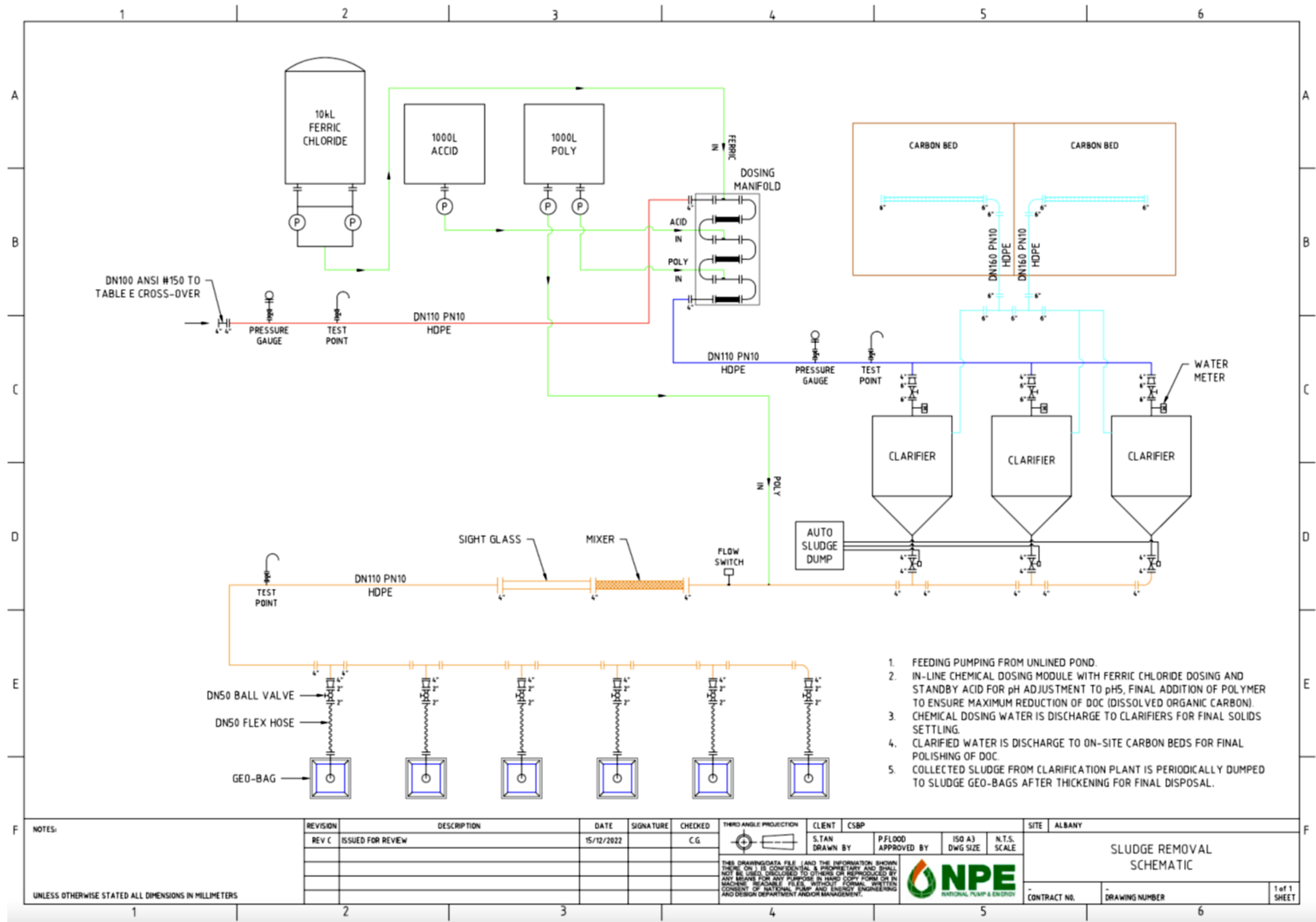


Figure 5: Proposed chemical treatment plant schematic layout

W6785/2023/1 (12/06/2023)