



**Works approval number** W6741/2022/1

**Works approval holder** CPB Contractors Pty Ltd  
**ACN** 000 893 667

**Registered business address** Level 18, 177 Pacific Highway  
NORTH SYDNEY NSW 2060

**DWER file number** DER2022/000494

**Duration** 01/06/2023 to 31/05/2026

**Date of issue** 31/05/2023

**Premises details** Yanchep Rail Extension – Alkimos stockpile -  
Limestone and Concrete Crushing Plant  
Lot 2 on Deposited Plan 419385, Land ID 30029571  
WANNEROO WA 6065  
As defined by the premises map in Schedule 1

Prescribed premises category description (Schedule 1, <i>Environmental Protection Regulations 1987</i> )	Assessed production capacity
Category 12: Screening etc. of material: premises (other than premises within category 5 or 8) on which material extracted from the ground is screened, washed, crushed, ground, milled, sized or separated.	550 000 tonnes per year
Category 13: Crushing of building material: premises on which waste building or demolition material (for example, bricks, stones or concrete) is crushed or cleaned.	50 000 tonnes per year

This works approval is granted to the works approval holder, subject to the attached conditions, on 31 May 2023, by:

**A/Manager, Resource Industries**  
**REGULATORY SERVICES**

an officer delegated under section 20 of the *Environmental Protection Act 1986* (WA)

## Works approval history

Date	Reference number	Summary of changes
31/05/2023	W6741/2022/1	Works approval granted.

## Interpretation

In this works approval:

- (a) the words 'including', 'includes' and 'include' in conditions mean "including but not limited to", and similar, as appropriate;
- (b) where any word or phrase is given a defined meaning, any other part of speech or other grammatical form of that word or phrase has a corresponding meaning;
- (c) where tables are used in a condition, each row in a table constitutes a separate condition;
- (d) any reference to an Australian or other standard, guideline, or code of practice in this works approval:
  - (i) if dated, refers to that particular version; and
  - (ii) if not dated, refers to the latest version and therefore may be subject to change over time;
- (e) unless specified otherwise, any reference to a section of an Act refers to that section of the EP Act; and
- (f) unless specified otherwise, all definitions are in accordance with the EP Act.

**NOTE:** This works approval requires specific conditions to be met but does not provide any implied authorisation for other emissions, discharges, or activities not specified in this works approval.

# Works approval conditions

The works approval holder must ensure that the following conditions are complied with:

## Construction phase

### Infrastructure and equipment

1. The works approval holder must:
  - (a) Construct/ Install the infrastructure/ equipment;
  - (b) in accordance with the corresponding design and construction requirements; and
  - (c) at the corresponding infrastructure location; and
 as set out in Table 1.

**Table 1: Design and construction requirements**

Item	Site Infrastructure and equipment	Design and construction requirements	Infrastructure location	Timeframe
1.	McGloskey J50 Jaw Crusher	1) Sound power level not to exceed 123 dB(A)	Within crushing location as depicted within Schedule 1, Figure 1  and Within the yellow shaded area labeled 'Crushing location' shown in Schedule 1, Figure 2	N/A
	Edge RTS 9048 Stacker	2) Sound power level not to exceed 99 dB(A)		
	Front-end Loader	3) Sound power level not to exceed 108 dB(A)		
	Articulated water cart	4) Water cart must be available and operational to effectively wet down dust generating areas during construction.	Within premises as depicted within Schedule 1, Figure 1	
	Noise bunds	5) Earthen berms consisting of screened sand is to be installed on the southern side of the crusher location as depicted in Schedule 1, Figure 2  6) Earthen berms to have the following characteristics: <ul style="list-style-type: none"> <li>- Length = 140 meters</li> <li>- Height = 8 meters</li> <li>- Width = 28 meters</li> <li>- Number of cones = 10-11</li> </ul>	Within crushing location as depicted within Schedule 1, Figure 1  and Blue shaded area as depicted in Schedule 1, Figure 2	To be installed prior to time limited operations

## Compliance reporting

2. The works approval holder must within 30 calendar days of all items of infrastructure or equipment required by condition 1 being constructed or installed:
  - (a) undertake an audit of their compliance with the requirements of condition 1; and
  - (b) prepare and submit to the CEO an Environmental Compliance Report on that compliance.
3. The Environmental Compliance Report required by condition 2, must include as a minimum the following:
  - (a) as constructed plans or photographs and a detailed site plan for each item of infrastructure or component of infrastructure specified in condition 1; and
  - (b) be signed by a person authorised to represent the works approval holder and contains the printed name and position of that person.

## Time limited operations phase

### Commencement and duration

4. The works approval holder may only commence time limited operations for an item of infrastructure identified in condition 1 once the Environmental Compliance Report as required by condition 2 has been submitted by the works approval holder for that item of infrastructure.
5. The works approval holder may conduct time limited operations for an item of infrastructure as identified in condition 1:
  - (a) for a period not exceeding 180 calendar days from the day the works approval holder meets the requirements of condition 4 for that item of infrastructure; or
  - (b) until such time as a licence for that item of infrastructure is granted in accordance with Part V of the Environmental Protection Act 1986, if one is granted before the end of the period specified in condition 5(a).

### Time limited operations requirements and emissions management

6. During time limited operations, the works approval holder must ensure that the premises infrastructure and equipment listed in Table 2 and located at the corresponding infrastructure location is maintained and operated in accordance with the corresponding operational requirement set out in Table 2.

**Table 2: Operating requirements**

Site Infrastructure and equipment	Operational requirements	Location
McGloskey J50 Jaw Crusher Edge RTS 9048 Stacker Front-end Loader	1) Sound power levels of equipment to not exceed: <ul style="list-style-type: none"> <li>- McGloskey J50 Jaw Crusher = 123 dB(A)</li> <li>- Edge RTS 9048 Stacker = 99 dB(A)</li> <li>- Front-end Loader = 108 dB(A)</li> </ul> 2) Equipment / infrastructure to only be operated behind the noise bunds within the crushing location depicted in Schedule 1, Figure 2. 3) Only waste concrete sourced from fresh pours from within the Yanchep Rail Extension Project area and pre-cast elements specifically	Yellow shaded area labeled 'Crushing location' shown in Schedule 1, Figure 2.

	cast for use on the Yanchep Rail Extension Project are to be crushed.	
Articulated Water cart	4) Water cart must be available and operational to effectively wet down dust generating areas and stockpiles when required.	Within premises boundary as shown in Schedule 1, Figure 1

7. The works approval holder must ensure that operations at the premises only occur between the hours of 0700 and 1900 and on the days Monday to Saturday.
8. The works approval holder must ensure that no visible dust generated from the primary activities crosses the boundary of the premises.
9. The works approval holder must ensure stormwater is managed within the premises so that:
  - (a) clean stormwater is diverted around work areas; and
  - (b) potentially contaminated stormwater is retained onsite.

### Monitoring during time limited operations

10. Within 7 days of time limited operations the works approval holder must retain the services of a person qualified and experienced in the area of environmental noise assessment and who by their qualifications and experience is eligible to hold membership of the Australian Acoustical Society or the Australian Association of Acoustical Consultants to:
  - (a) investigate the nature and extent of noise emissions from the premises including undertaking noise monitoring during normal operations at the boundary of the closest noise sensitive receptor.
  - (b) assess in accordance with the methodology required in the *Environmental Protection (Noise) Regulations 1997*, the compliance of the noise emissions from the primary activities, against the relevant assigned levels specified in those Regulations; and
  - (c) compile and submit to the works approval holder within one month of the commencement date of this works approval a report in accordance with condition 11.

### Compliance reporting – noise assessment

11. A report prepared pursuant to condition 10(c) is to include:
  - (a) a description of the methods used for monitoring of noise emissions from the premises;
  - (b) details and the results of the investigation undertaken pursuant to condition 10(a);
  - (c) details and results of the assessment of the noise emissions from the premises against the relevant assigned levels in the *Environmental Protection (Noise) Regulations 1997* undertaken pursuant to condition 10(b); and
  - (d) an assessment of noise levels against the most recent previous noise modelling assessment.
12. The works approval holder must submit to the CEO the report prepared pursuant to condition 10(c) within 7 days of receiving it.

13. Where an assessment pursuant to condition 10 indicates that noise emissions do not comply with the relevant assigned levels in the *Environmental Protection (Noise) Regulations 1997*, the works approval holder must:
- (a) cease time limited operations for the infrastructure specified in condition 1;
  - (b) within 14 days of receiving an assessment report pursuant to condition 10(c) prepare a plan to ensure the undertaking of the licensed activity will no longer lead to any contravention of the *Environmental Protection (Noise) Regulations 1997*; and
  - (c) provide to the CEO a copy of the plan prepared pursuant to condition 13(b) within 30 days of its preparation.
14. A report prepared pursuant to condition 13(b) is to include timeframes for the completion of additional noise mitigation measures.
15. The works approval holder may recommence time limited operations of the infrastructure specified in condition 1 upon implementation of all noise mitigation measures identified in accordance with condition 13(b).
16. Where operations are recommenced in accordance with condition 15, the works approval holder must notify the CEO in writing a minimum of 48 hours prior to recommencing time limited operations.

### Compliance reporting – Time limited operations

17. The works approval holder must submit to the CEO a report on the time limited operations within 30 calendar days of the completion date of time limited operations.
18. The works approval holder must ensure the report required by condition 17 includes the following:
- (a) a summary of the time limited operations, including timeframes and amount of material processed
  - (b) a summary of the environmental performance of all infrastructure as constructed or installed;
  - (c) a review of performance and compliance against the conditions of the works approval; and
  - (d) where the manufacturer's design specifications and the conditions of this works approval have not been met, what measures will the works approval holder take to meet them, and what timeframes will be required to implement those measures.

### Records and reporting (general)

19. The works approval holder must record the following information in relation to complaints received by the works approval holder (whether received directly from a complainant or forwarded to them by the Department or another party) about any alleged emissions from the premises:
- (a) the name and contact details of the complainant, (if provided);
  - (b) the time and date of the complaint;
  - (c) the complete details of the complaint and any other concerns or other issues raised; and
  - (d) the complete details and dates of any action taken by the works approval holder to investigate or respond to any complaint.

- 20.** The works approval holder must maintain accurate and auditable books including the following records, information, reports, and data required by this works approval:
- (a) the works conducted in accordance with condition 1;
  - (b) any maintenance of infrastructure that is performed in the course of complying with condition 6;
  - (c) monitoring programmes undertaken in accordance with condition 10; and
  - (d) complaints received under condition 19.
- 21.** The books specified under condition 20 must:
- (a) be legible;
  - (b) if amended, be amended in such a way that the original version(s) and any subsequent amendments remain legible and are capable of retrieval;
  - (c) be retained by the works approval holder for the duration of the works approval; and
  - (d) be available to be produced to an inspector or the CEO as required.

## Definitions

In this works approval, the terms in Table have the meanings defined.

**Table 3: Definitions**

Term	Definition
books	has the same meaning given to that term under the EP Act.
CEO	means Chief Executive Officer. CEO for the purposes of notification means: Director General Department administering the <i>Environmental Protection Act 1986</i> Locked Bag 10 Joondalup DC WA 6919 <a href="mailto:info@dwer.wa.gov.au">info@dwer.wa.gov.au</a>
dB	means decibel.
Department	means the department established under section 35 of the <i>Public Sector Management Act 1994</i> and designated as responsible for the administration of Part V Division 3 of the EP Act.
discharge	has the same meaning given to that term under the EP Act.
emission	has the same meaning given to that term under the EP Act.
Environmental Compliance Report	means a report to satisfy the CEO that the conditioned infrastructure has been constructed in accordance with the works approval.
EP Act	<i>Environmental Protection Act 1986</i> (WA).
EP Regulations	<i>Environmental Protection Regulations 1987</i> (WA).
premises	the premises to which this licence applies, as specified at the front of this licence and as shown on the premises map (Figure 1) in Schedule 1 to this works approval.
prescribed premises	has the same meaning given to that term under the EP Act.
time limited operations	refers to the operation of the infrastructure and equipment identified under this works approval that is authorised for that purpose, subject to the relevant conditions.
works approval	refers to this document, which evidences the grant of the works approval by the CEO under section 54 of the EP Act, subject to the conditions.
works approval holder	refers to the occupier of the premises being the person to whom this works approval has been granted, as specified at the front of



Term	Definition
	this works approval.

---

**END OF CONDITIONS**

## Schedule 1: Maps

### Premises map

The boundary of the prescribed premises is shown in the map below (Figure 1).

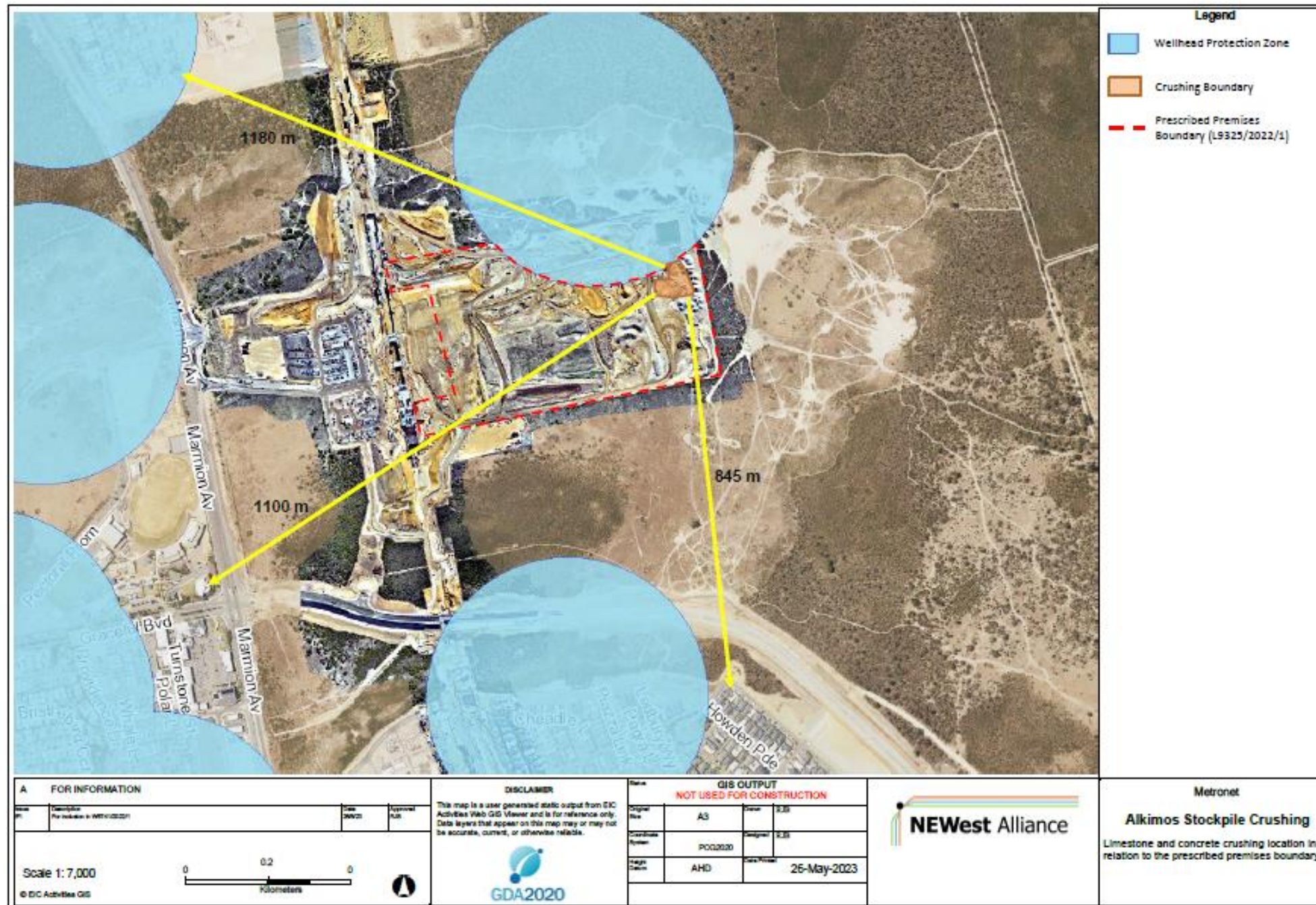


Figure 1: Map of the boundary of the prescribed premises and location of crushing area.



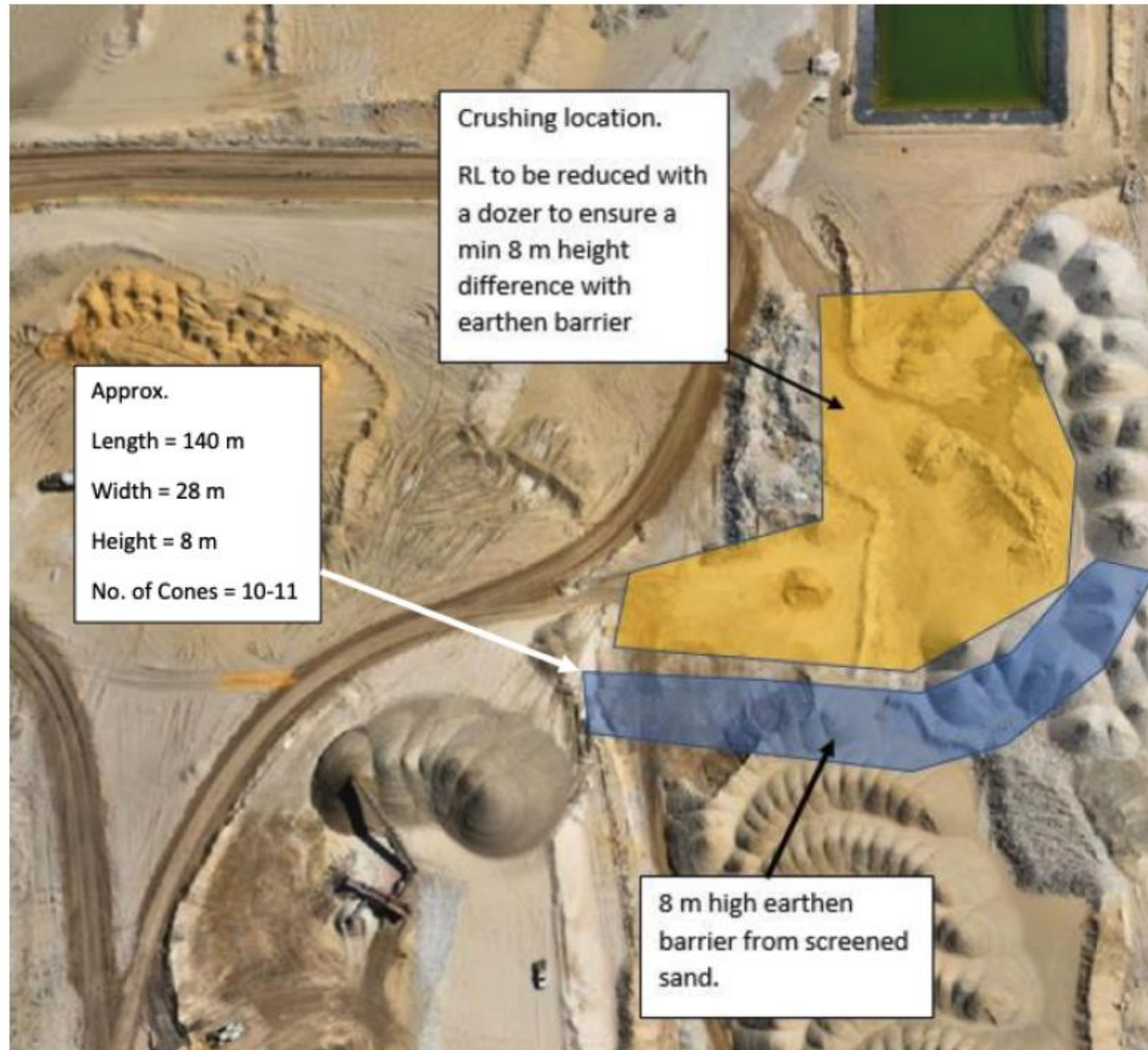


Figure 2: Site layout showing location of crushing area and noise bunds