



Licence number	L6925/1997/8
Licence holder	City of Albany
Registered business address	102 North Road YAKAMIA WA 6330
DWER file number	DER2014/000768
Duration	03/06/2013 to 02/06/2032
Date of amendment	27/03/2023
Premises details	Albany Refuse Site 37 Maxwell Street MOUNT MELVILLE WA 6330 Legal description - Lot 1135 on Plan 208775 & Lot 202 on Plan 76615 As defined by the premises maps and coordinates in Schedule 1 and Schedule 2

Prescribed premises category description (Schedule 1, <i>Environmental Protection Regulations 1987</i>)	Assessed design capacity
Category 62: Solid waste depot: Premises on which waste is stored, or sorted, pending final disposal or re-use.	5,000 tonnes per annual period
Category 64: Class II or III putrescible landfill site: Premises on which waste (as determined by the reference to the waste type set out in the document entitled "Landfill Waste Classification and Waste Definitions 1996 (as amended 2019): published by the Chief Executive Officer and as amended from time to time) is accepted for burial.	100,000 tonnes per annual period

This licence is granted to the licence holder, subject to the attached conditions, on 27 March 2023, by:

Abbie Crawford
A/MANAGER, WASTE INDUSTRIES
REGULATORY SERVICES

an officer delegated under section 20 of the *Environmental Protection Act 1986* (WA)

Licence history

Date	Reference number	Summary of changes
01/02/2006	L6925/1997/7	Licence Amendment
16/06/2010	L6925/1997/7	Licence Amendment (quarantine waste and leachate EIP)
15/07/2011	L6925/1997/7	Licence Amendment (extension on EIP works compliance date)
09/02/2012	L6925/1997/7	Licence Amendment (extension on EIP works compliance date)
13/12/2012	W4922/2015/1	Works Approval Issue (leachate works stage 1)
13/12/2012	W5293/2012/1	Works Approval Issue (leachate works stage 2)
23/05/2013	L6925/1997/8	Licence Reissue and Licence Format Conversion
08/01/2014	W5543/2013/1	Works Approval Issue (leachate works stage 3)
10/07/2014	L6925/1997/8	Licence Amendment (monitoring requirements)
27/02/2015	W5759/2015/1	Works Approval Issue (bioremediation facility construction)
16/03/2015	L6925/1997/8	Licence Amendment (bioremediation facility operation)
10/12/2015	L6925/1997/8	Licence Amendment (contaminated waste management)
16/01/2019	L6925/1997/8	Amendment Notice 1 (AER due date extension)
3/11/2020	L6925/1997/8	Licence Amendment (paint waste acceptance and storage prior to removal in accordance with Paintback Scheme) and Licence format conversion
27/03/2023	L6925/1997/8	Licence Amendment (household hazardous waste acceptance in accordance with household hazardous waste program and changes in throughput for Category 62 for recycling of additional items)

Interpretation

In this licence:

- (a) the words 'including', 'includes' and 'include' in conditions mean "including but not limited to", and similar, as appropriate;
- (b) where any word or phrase is given a defined meaning, any other part of speech or other grammatical form of that word or phrase has a corresponding meaning;
- (c) where tables are used in a condition, each row in a table constitutes a separate condition;
- (d) any reference to an Australian or other standard, guideline, or code of practice in this licence:
 - (i) if dated, refers to that particular version; and
 - (ii) if not dated, refers to the latest version and therefore may be subject to change over time;
- (e) unless specified otherwise, any reference to a section of an Act refers to that section of the EP Act; and
- (f) unless specified otherwise, all definitions are in accordance with the EP Act.

NOTE: This licence requires specific conditions to be met but does not provide any implied authorisation for other emissions, discharges, or activities not specified in this licence.

Licence conditions

The Licence Holder must ensure that the following conditions are complied with:

Premises operation

1. The Licence Holder must only accept onto the premises waste of a waste type, which does not exceed the corresponding rate at which waste is received, and which meets the corresponding acceptance specification set out in Table 1.

Table 1: Types of waste authorised to be accepted onto the premises

Waste type	Rate at which waste is received	Acceptance specification ¹
Clean Fill	N/A	Accepted for rehabilitation and final land forming in accordance with the <i>Landfill Waste Classification and Waste Definitions 1996</i> (as amended)
Inert Waste Type 1	100,000 tonnes per annual period for burial	None specified.
Inert Waste Type 2 (Tyres)		
Special Waste Type 1 (Asbestos)		Must be wrapped in heavy duty plastic prior to acceptance.
Special Waste Type 2 (Biomedical Waste)		The Licence holder or their representative must note in writing any discrepancies between waste declared and waste received.
Putrescible Waste		None specified.
Quarantine Waste		The landfill must be approved by AQIS as a Class 8.2 Quarantine Approved Premises (unless otherwise agreed by AQIS). Quarantine Waste must be despatched to the landfill by an AQIS officer or a party that has been accredited by AQIS to carry out the transport of quarantine wastes to the site.
Contaminated Solid Waste		Must be supported by documentation that demonstrates compliance with Class II Landfill Definitions acceptance criteria.
Putrescible Waste (including mattresses and cardboard)	combined 4,900 tonnes per annual period for storage prior to transfer	Maximum of 5,000 mattresses to be accepted per year
Scrap metal		

Inert Waste Type 2		
Commingle Recycling		
E-waste		
Special Waste Type 2		Sharps only
Hazardous Waste	100 tonnes per annual period for storage prior to transfer	<p>Acceptance of household hazardous waste (HHW) materials listed in Schedule 4. Individual containers of waste must not exceed 20L or 20kg.</p> <p>Acceptance of a maximum of 100L of paint per drop-off. Individual paint containers must not exceed 20L or 20kg.</p> <p>Paint waste limited to water and solvent-based interior and exterior paint; deck coating and floor paints; primers, undercoats and sealers; stains and shellacs; varnishes and urethanes (single component) and wood coatings (containing no pesticides).</p> <p>Acceptance of waste oil (including cooking oil), vehicle batteries, and other hazardous wastes.</p> <p>drumMUSTER containers must only be accepted if they have been rinsed and are free of chemical residue</p>

Note 1: Additional requirements for the acceptance of controlled waste (including asbestos and tyres) are set out in the *Environmental Protection (Controlled Waste) Regulations 2004*.

2. The Licence Holder must ensure that where waste does not meet the waste acceptance criteria set out in condition 1, it is removed from the premises by the delivery vehicle or, where that is not possible, stored in a quarantined storage area or container and removed to an appropriately authorised facility as soon as practicable.
3. The Licence Holder must ensure that the waste types specified in Table 2 are only subjected to the corresponding process(es) and subject to the corresponding process limits and/or specifications as set out in Table 2.

Table 2: Waste processing

Waste type	Process(es)	Process limits and/or specifications ^{1, 2}
Clean Fill	Storage and use in rehabilitation and final land forming of the landfill	Clean fill may be stored in stockpiles on site for use in rehabilitation and final land forming of the landfill in accordance with the <i>Landfill Waste Classification and Waste Definitions 1996</i> (as amended)
All Waste	Receipt, handling and disposal of waste by landfilling	Disposal of waste by landfilling must only take place within the Active Landfill Area shown on the premises Map in Schedule 1; and The separation distance between the base of the landfill and the highest groundwater level must not be less than 3m.
Inert Waste Type 1		None specified.
Inert Waste Type 2 (Tyres)		To be stored in piles of up to 100 units with a 6m separation distance between piles. Tyres must only be landfilled: <ul style="list-style-type: none"> in batches separated from each other by at least 100mm of soil and each consisting of not more than 40 cubic metres of tyres reduced to pieces; or in batches separated from each other by at least 100mm of soil and each consisting of not more than 1000 whole tyres.
Special Waste Type 1 (Asbestos)		Only to be disposed of (by burial) into a designated asbestos waste disposal area within the landfill; Only to be temporarily stored on the premises prior to burial if completely wrapped such that asbestos fibres are not able to be released, and stored in a location and manner which prevents reasonable risk of damage to the waste; Not to be deposited within 2m of the final tipping surface of the landfill; Access to the area where the waste is buried must be restricted to the Licence Holder, or a representative authorised by the Licence Holder only; The Licence Holder, or a representative of the Licence Holder must witness the burial and sign the register referred to in condition 27 within two hours of the burial to attest the

Waste type	Process(es)	Process limits and/or specifications ^{1, 2}
		<p>waste has been buried in accordance with the conditions of this Licence; and</p> <p>No works must be carried out on the landfill that could lead to a release of asbestos fibres.</p>
Special Waste Type 2 (Biomedical Waste)		<p>Must only be disposed of into a designated biomedical waste disposal area within the landfill;</p> <p>Must not to be deposited within 2m of the final tipping surface of the landfill;</p> <p>Access to the area where the waste is buried must be restricted to authorised persons only;</p> <p>The Licence Holder, or a representative of the Licence Holder must witness the burial and sign the register referred to in condition 27 within two hours of the burial to attest the waste has been buried in accordance with the conditions of this Licence; and</p> <p>No works must be carried out on the landfill that could lead to biomedical wastes being exposed or uncovered.</p>
Putrescible Waste		None specified.
Quarantine Waste		Quarantine waste must not to be deposited within 2 metres of the final tipping surface of the landfill.
Contaminated Solid Waste		None specified.
Inert Waste Type 2	Receipt, handling and storage prior to transfer for recycling or appropriate disposal	<p>Damaged roadside plastic bins and their parts must be stored in a hook-lift bin (up to 40m³ in volume) located within the Recycling Storage area shown in Figure 3.</p> <p>A maximum of 80 m³ of plastic from damaged bins is to be stored at any one time.</p>
Putrescible Waste		<p>A maximum of 500 mattresses may be stored onsite at any one time. Mattresses must be contained within 40 ft sea containers located within the Recycling Storage area shown in Figure 3.</p> <p>Up to 900kg of cardboard may be stored on site at any one time. Cardboard must either be stored in 660 L bins located in the Receivals</p>

Waste type	Process(es)	Process limits and/or specifications ^{1, 2}
		area shown in Figure 2 or in 4.5m ³ bins within the Recycling Storage area shown in Figure 3
Metals		Scrap metal must be stored on a bitumen/concrete hardstand within the Recycling Storage area shown in Figure 3. Non-ferrous metals must be stored in 3m ³ steel bins (up to 25 tonnes at any one time).
Special Waste Type 2 (Biomedical Waste)		Storage of sharps only. Sharps must be stored within a locked 140 L bin and locked steel sharps container, located on a bitumen/concrete hardstand within the Receivals area shown in Figure 2.
Commingled Recycling		Commingled Recycling must be stored in 240 L bins or IBCs (for larger plastic bottles), within the Receivals area shown in Figure 2. A maximum of 1 tonne of commingled recycling is to be stored at any one time.
E-waste		Must be stored on a bitumen/concrete hardstand within the Recycling Storage area shown in Figure 3 or the Receivals area shown in Figure 2. Must be protected by a weatherproof covering Must be kept separated from other types of waste and stored in a mesh stillage Mobile phones must be stored in a locked 240 L bin at the Receivals area.
Hazardous Waste		HHW must be stored within the chemical storage shed at the location specified in Figures 1, 2 and 3 in Schedule 1 of this Licence. HHW is to be separated into dangerous good categories and kept in trays to contain any leakage. The chemical storage shed is to be locked when staff are not in attendance. Paint and other hazardous wastes must be stored separated by dangerous good type in 2 x 20ft sea containers (modified to meet AS1940-2004), located in accordance with Figures 1, 2 and 3 in Schedule 1 of this Licence. Each sea container must have a bunded floor capacity of at least 2,500 litres.

Waste type	Process(es)	Process limits and/or specifications ^{1, 2}
		<p>Sea containers are to be locked when staff are not in attendance.</p> <p>Paint waste must be stored:</p> <ul style="list-style-type: none"> • With lids securely fitted on containers to prevent paint discharging from the container; and • Upright, within bunded and impermeable storage containers with adequate ventilation and air flow. <p>Waste oil (excluding cooking oil) must be stored within the transfer shed (location as per Figures 1 and 2). Waste oil must be unloaded and/or stored in a lined, bunded facility which is regularly pumped out to ensure overtopping does not occur.</p> <p>Up to 1,000L of waste cooking oil is to be stored at the Receivals area shown in Figure 2, in an IBC.</p> <p>Vehicle batteries must be stored in a location and manner in which they are protected from physical damage and rainfall, they cannot discharge to the environment and they can be visibly checked at any time for leakage and/or damage.</p> <p>No rinsing of drumMUSTER containers is to occur on the premises.</p> <p>All drumMUSTER containers must be secured in stacks and stored on a bitumen/concrete hardstand within the Recycling Storage area shown in Figure 3. All hazardous waste storage containers must be visually inspected regularly for leakage and/or damage.</p> <p>All spills, leaks and/or discharges of hazardous waste must be immediately contained, cleaned up and removed to an appropriately licenced facility for disposal.</p> <p>Spill kits must be available to contain and clean up spills of hazardous waste.</p> <p>Material utilised to clean up hazardous waste must be disposed of to an appropriately licensed facility.</p> <p>No landfilling of hazardous waste to occur on the premises.</p>

Note 1: Requirements for landfilling tyres are set out in Part 6 of the *Environmental Protection Regulations 1987*.

Note 2: Additional requirements for the acceptance and landfilling of controlled waste (including asbestos and tyres) are set out in the *Environmental Protection (Controlled Waste) Regulations 2004*.

4. The Licence Holder must manage the landfilling activities to ensure:
 - (a) the size of the tipping face is kept to a minimum and not larger than 30 metres in width and two metres (2m) in height;
 - (b) the active tipping area is wet down as required to minimise dust generation associated with vehicle movement and during waste and cover placement;
 - (c) waste is levelled and compacted as soon as practicable after it is discharged;
 - (d) waste is placed and compacted to ensure all faces are stable and capable of retaining further waste placement or placement of cover or rehabilitation material; and
5. Rehabilitation of a cell or phase commences within six months after disposal in that cell of phase has been completed.
6. The Licence Holder must ensure that cover is applied and maintained on landfilled waste types in accordance with the corresponding cover requirements in Table 3 and that sufficient stockpiles of cover are maintained on the premises at all times.

Table 3: Cover requirements¹

Waste type	Material	Depth	Timescales
Special Waste Type 1 (Asbestos)	Inert Waste Type 1 or Clean Fill	300mm	As soon as practicable after deposit and prior to compaction, but by no later than the end of the working day.
Special Waste Type 2 (Biomedical Waste)			Immediately.
Inert Waste Type 2 (Tyres)		100mm	To be covered by the end of the working day in which the waste was deposited.
All other wastes		150mm	Continuous cover techniques, or a minimum of daily cover.

Note 1: Additional requirements for the covering of tyres are set out in Part 6 of the *Environmental Protection Regulations 1987*.

7. The Licence Holder must:
 - (a) erect and maintain suitable fencing to prevent unauthorised access to the premises;
 - (b) ensure that any entrance gates to the premises are securely locked when the premises is unattended; and
 - (c) undertake regular inspections of all security measures and repair damage as soon as practicable.
8. The Licence Holder must:
 - (a) ensure that firefighting equipment and systems are in good working order and capable of controlling a fire on the premises;

- (b) ensure that no waste is burnt on the premises;
 - (c) ensure that any unauthorised fire on site is extinguished as soon as possible;
 - (d) ensure that contaminated firefighting wash-water is contained onsite through the construction of earthen bunds approximately 45 metres to the west of the facility as per Figure 3 in Schedule 1 of this licence (emergency earth bund);
 - (e) collect and remove all fire wash-water and other waste that may result from firefighting on the premises; and
 - (f) ensure that any firefighting wash-water is removed without delay by a carrier licenced under the *Environmental Protection (Controlled Waste) Regulations 2004*, and remove all fire impacted waste for disposal off-site to a suitably licensed premises.
9. The Licence Holder must ensure that:
- (a) all reasonable and practicable measures are taken to ensure that no windblown waste escapes from the premises; and
 - (b) any windblown waste is collected on at least a weekly basis and returned to the tipping area or is otherwise appropriately contained.

Emissions

Point source emissions to surface water

10. The Licence Holder must maintain stormwater drains around the perimeter of the active landfill area which effectively direct uncontaminated stormwater away from the active landfill area and to sedimentation basin/s prior to its release off the premises.
11. The Licence Holder must divert leachate and contaminated surface water from the filled and peripheral areas of the active landfill area, by dedicated drains, to a lined detention pond.
12. The Licence Holder must manage all leachate ponds such that:
- (a) overtopping of the ponds, causing a discharge from the premises or to the environment, does not occur;
 - (b) a freeboard equal to, or greater than, 1000mm is maintained on “Leachate Pond (LP1)” as defined and labelled on the Map of monitoring locations in Schedule 1;
 - (c) the integrity of the ponds to contain all leachate is maintained; and
 - (d) vegetation (emergent or otherwise) is prevented from encroaching onto pond surfaces or inner pond embankments.
13. The Licence Holder must ensure that the emissions specified in Table 4, are discharged only from the corresponding discharge point and only at the corresponding discharge point location.

Table 4: Emission points to surface water

Emission point reference and location on Map of monitoring locations	Discharge point	Discharge point location
Weir; and Sedimentation basin (SB2)	V-Notch weir discharging to stormwater drain	Uncontaminated stormwater, travelling to V-notch weir via sedimentation basin.

14. The Licence Holder must not cause or allow emissions to surface water greater than the limits listed in Table 5.

Table 5: Point source emission limits to surface water

Emission point reference and location on map of monitoring locations	Parameter	Limit (including units)	Averaging period
Weir; and Sedimentation basin (SB2)	Total Nitrogen	10 mg/L	Spot sample

Monitoring

General monitoring

15. The Licence Holder must ensure that:
- (a) all water samples are collected and preserved in accordance with AS/NZS 5667.1;
 - (b) all wastewater sampling is conducted in accordance with AS/NZS 5667.10;
 - (c) all surface water sampling is conducted in accordance with AS/NZS 5667.4, AS/NZS 5667.6 or AS/NZS 5667.9 as relevant;
 - (d) all groundwater sampling is conducted in accordance with AS/NZS 5667.11;
 - (e) all microbiological samples are collected and preserved in accordance with AS/NZS 2031;
 - (f) all soil sampling is conducted in accordance with AS 4482.1 and AS 4482.2;
 - (g) all leachable concentration sampling is conducted in accordance with AS 4439.3; and
 - (h) all laboratory samples are submitted to and tested by a laboratory with current NATA accreditation for the parameters being measured unless indicated otherwise in the relevant table.
16. The Licence Holder must ensure that:
- (a) monitoring is undertaken in each monthly period such that there are at least 15 days in between the days on which samples are taken in successive months;
 - (b) monitoring is undertaken in each quarterly period such that there are at least 45 days in between the days on which samples are taken in successive quarters;

- (c) monitoring is undertaken in each six-monthly period such that there are at least 5 months in between the days on which samples are taken in successive periods of six months; and
- (d) monitoring is undertaken in each annual period such that there are at least 9 months in between the days on which samples are taken in successive years.
17. The Licence Holder must ensure that all monitoring equipment used on the premises to comply with the conditions of this Licence is calibrated in accordance with the manufacturer's specifications.
18. The Licence Holder must, where the requirements for calibration cannot be practicably met, or a discrepancy exists in the interpretation of the requirements, bring these issues to the attention of the CEO accompanied with a report comprising details of any modifications to the methods.

Monitoring of point source emissions to surface water

19. The Licence Holder must undertake the monitoring in Table 6 according to the specifications in Table 6.

Table 6: Discharge monitoring

Discharge point	Parameter	Unit	Frequency
Weir (when flowing); or Sedimentation Basin (SB2) when the Weir is not flowing.	Volumetric flow	m ³	Monthly
	pH ¹		
	Dissolved Oxygen ¹	mg/L	
	Oxidation / Reduction Potential ¹	mV	
	Electrical Conductivity ¹	µS/cm	
	Total Nitrogen; Total Phosphorus; Nitrate-Nitrogen; Nitrite-Nitrogen; Ammonia-Nitrogen; 5-Day Biochemical Oxygen Demand; Total Suspended Solids; Phosphate	mg/L	
Weir (when flowing); or Sedimentation Basin (SB2) when the Weir is not flowing.	Total Dissolved Solids; Potassium; Fluoride; Chloride; Sulfate; Lead; Manganese; Copper; Chromium; Nickel; Zinc; Cadmium; Aluminium; Arsenic; Total Iron; Mercury	mg/L	Monthly
	Cyanide (amendable and total)	mg/L	

Discharge point	Parameter	Unit	Frequency
	Polycyclic aromatic hydrocarbons (total)	kg/day	
	Total recoverable hydrocarbons (petroleum hydrocarbons)		
	Total Nitrogen; Total Phosphorus		
	<i>Escherichia coli</i>	Cfu/100 mL	
Weir (when flowing); or Sedimentation Basin (SB2) if Weir has not been flowing during any of the months specified ² .	Surfactants; Pesticides; Oil and Grease; Total Residual Chlorine	mg/L	Annual (in February, March or April)

Note 1: In-field non-Nata Accredited analysis permitted.

Note 2: Preference is to be given to sampling the Weir instead of the Sedimentation Basin (SB2) whenever possible.

Monitoring of inputs and outputs

20. The Licence Holder must record the total amount of waste accepted onto the premises, for each waste type listed in Table 1, in the unit specified in Table 7, and for the time period set out in Table 7.

Table 7: Waste accepted onto the premises

Waste Type	Unit	Time period
All wastes specified in Table 1	Tonnes (where a weighbridge is present on the site); or m ³ where no weighbridge is present.	Each load arriving at the premises.

21. The Licence Holder must record the total amount of waste removed from the premises, for each waste type listed in Table 8, in the corresponding unit, and for each corresponding time period set out in Table 8.

Table 8: Waste removed from the premises

Waste type	Unit	Time period
Waste type as defined in the Landfill Waste Classification and Waste Definitions 1996	Tonnes (where a weighbridge is present on the site); or m ³ where no weighbridge is present.	Each load leaving or rejected from the premises.

Process monitoring

22. The Licence Holder must undertake the monitoring according to the specifications in Table 9.

Table 9: Process monitoring

Monitoring point reference and location on Map of monitoring locations	Process description	Parameter	Unit	Frequency
Leachate pond (LP2)	Irrigation of leachate within active landfill area from the Leachate Pond	Volume of leachate irrigated	m³	When irrigating
		pH¹	pH	Annually (in February, March or April)
		Electrical Conductivity¹	µS/cm	
		Total Nitrogen; Total Phosphorus; Nitrate-Nitrogen; Nitrite-Nitrogen; Ammonia-Nitrogen; 5-Day Biochemical Oxygen Demand; Total Suspended Solids; Phosphate	mg/L	
		Total Dissolved Solids; Potassium; Fluoride; Chloride; Sulfate		
		Lead; Manganese; Copper; Chromium; Nickel; Zinc; Cadmium; Aluminium; Arsenic; Total Iron; Mercury		
Escherichia coli	Cfu/100mL			

Note 1: In-field non-NATA accredited analysis permitted.

Ambient environmental quality monitoring

23. The Licence Holder must undertake the monitoring in Table 10 according to the specifications in Table 10.

Table 10: Monitoring of ambient groundwater quality

Monitoring location	Parameter	Unit	Averaging period	Frequency
Monitoring bores: BH1(A), BH2(A), BH3(A), BH4(A), BH5(A&B), BH6(A&B), BH7(A&B), BH8(A&B), BH9(A&B), BH10(A&B), BH11(A&B), BH12(A&B), and BH13(A&B),	pH ¹	pH	Spot sample	Quarterly
	Dissolved Oxygen ¹	mg/L		
	Oxidation / Reduction Potential ¹	mV		
	Electrical Conductivity ¹	µS/cm		
	Standing Water Level	mAHD & mBGL		
	Cyanide (amendable and total)	mg/L		
	Polycyclic Aromatic Hydrocarbons; BTEX	mg/L	Spot sample	Annually
Monitoring Bores: BH1(A),BH2(A), BH3(A), BH4(A), BH5(A&B), BH6(A), BH7(A), BH8(A), BH9(A), BH10(A), BH11(A), BH12(A) and •BH13(A).	Total Nitrogen; Total Phosphorus; Nitrate-Nitrogen; Nitrite-Nitrogen; Ammonia-Nitrogen; 5-Day Biochemical Oxygen Demand; Phosphate. Total Dissolved Solids; Potassium; Fluoride; Chloride; Sulfate Lead; Manganese; Copper; Chromium; Nickel; Zinc; Cadmium; Aluminium; Arsenic; Total Iron; Mercury	mg/L	Spot sample	Quarterly
	Cyanide (amendable and total)			
	<i>Escherichia coli</i>	Cfu/100 mL		
Monitoring bores: BH6(B), BH7(B), BH8(B), BH10(B), BH11(B), BH12(B) and BH13(B).	Total Nitrogen; Total Phosphorus; Nitrate-Nitrogen; Nitrite-Nitrogen; Ammonia-Nitrogen; 5-Day Biochemical Oxygen Demand; Phosphate Total Dissolved Solids; Potassium;	mg/L	Spot sample	Six monthly

Monitoring location	Parameter	Unit	Averaging period	Frequency
	Fluoride; Chloride; Sulfate			
	Lead; Manganese; Copper; Chromium; Nickel; Zinc; Cadmium; Aluminium; Arsenic; Total Iron; Mercury			
	Cyanide (amendable and total)			
	<i>Escherichia coli</i>	Cfu/100 mL		

Note 1: In-field non-NATA accredited analysis permitted.

Information

Records

24. All information and records required by the Licence Holder must:
 - (a) be legible;
 - (b) if amended, be amended in such a way that the original version(s) and any subsequent amendments remain legible and are capable of retrieval;
 - (c) except for records listed in 24(d) be retained for at least 6 years from the date the records were made or until the expiry of the Licence or any subsequent licence;
 - (d) for those following records, be retained until the expiry of the Licence and any subsequent licence:
 - (i) off-site environmental effects; or
 - (ii) matters which affect the condition of the land or waters; and
 - (e) be available to be produced to an inspector or the CEO as required.
25. The licence holder must:
 - (a) undertake an audit of their compliance with the conditions of this licence during the preceding annual period, and
 - (b) prepare and submit to the CEO an Annual Audit Compliance Report in the approved form by 1 March each year.
26. The licence holder must record the following information in relation to complaints received by the licence holder (whether received directly from a complainant or forwarded to them by the Department or another party) about any alleged emissions from the premises:
 - (a) the name and contact details of the complainant, (if provided);

- (b) the time and date of the complaint;
 - (c) the complete details of the complaint and any other concerns or other issues raised; and
 - (d) the complete details and dates of any action taken by the licence holder to investigate or respond to any complaint.
27. The Licence Holder must maintain a register of Special Waste Type 1 and Special Waste Type 2 disposed of at the Premises which shall include a plan showing the position of Special Waste Type 1 and Special Waste Type 2 disposed of at the premises.

Reporting

28. The licence holder must:
- (e) prepare an environmental report that provides information in accordance with Table 11 for the preceding annual period, and
 - (f) submit the environmental report to the CEO by 1 March each year.

Table 11: Annual Environmental Report

Condition or table	Parameter	Format or form
-	Summary of any failure or malfunction of any pollution control equipment or any incidents that have occurred during the annual period and any action taken	None specified
Table 6	Summary of all monitoring data for point source emissions to surface water which shall include: data in a table format for the annual period; data in graphical format for trend analysis to include at least the last four years data where available; and an assessment of point source emission to surface water monitoring data for the risk of emissions.	
Table 7; and Table 8	Summary of all inputs and outputs monitoring data which shall include: data in a table format for the annual period; and comment on annual input and output volumetric trends.	
Table 9	Summary of all monitoring data for process monitoring (Leachate pond) which shall include:	

	<p>data in table format for the annual period;</p> <p>data in graphical format for trend analysis to include at least the last four years data where available; and</p> <p>an assessment of process monitoring data trends.</p>	
Table 10	<p>Summary of all monitoring data for ambient groundwater quality which shall include:</p> <p>data in a table format for the annual period;</p> <p>data in graphical format for trend analysis to include at least the last four years data where available; and</p> <p>an assessment of ambient groundwater quality monitoring data for the risk of emissions.</p>	
Condition 26	Complaints summary for annual period	None specified

Note 1: AACR form is available at www.der.wa.gov.au

29. The Licence Holder must ensure that the Annual Environmental Report also contains:
- (a) An assessment of the information contained within the report against previous monitoring results and Licence limits; and
 - (b) An assessment of the information contained within the report against the applicable standards and/or guidelines.

Notification

30. The Licence Holder must ensure that the parameters listed in Table 12 are notified to the CEO in accordance with the notification requirements of the table.

Table 12: Notification requirements

Condition or Table	Parameter	Notification requirement	Format or form
7	The date, time, cause and location of any unauthorised fires on the premises	Within 14 days of the fire	In writing
14 (and Table 5)	Breach of any limit specified in the Licence	Part A: As soon as practicable but no later	N1 ¹

Condition or Table	Parameter	Notification requirement	Format or form
		than 5PM of the next usual working day. Part B: As soon as practicable	
18	Calibration report	As soon as practicable	None specified

Note 1: The form is available in Schedule 3 of this Licence.

Definitions

In this Licence, the terms in Table 13 have the meanings defined.

Table 13: Definitions

Term	Definition
Acceptance criteria	Has the meaning defined in Landfill Definitions
ACN	Australian Company Number
Annual Audit Compliance Report (AACR)	Means a report submitted in a format approved by the CEO (relevant guidelines and templates available on the Department's website).
Annual period	A 12 month period commencing from 1 January until 31 December of the immediately following year.
Applicable standards and/ or guidelines	Means but is not limited to, all guidelines and standards referred to and defined within this Licence, including the following documents: Department of Environment and Conservation, Contaminated Sites Management Series guideline ' <i>Assessment Levels for Soil, Sediment and Water</i> ' (February 2010), as amended from time to time. If relevant assessment levels are not included in this guideline, alternative assessment levels should be adopted from appropriate Australian and/or International guidance documents to enable an adequate assessment of the data; and Australian and New Zealand Environment and Conservation Council and the Agriculture and Resource Management Council of Australia and New Zealand ' <i>Australian and New Zealand Guidelines for Fresh and Marine Water Quality</i> ' (October, 2000), as amended from time to time.
AQIS	Means Australian Quarantine and Inspection Service
AS/NZS 2031	Means the Australian Standard AS/NZS 2031 Selection of containers and preservation of water samples for microbiological analysis
AS 4439.3	Means the Australian Standard AS Wastes, Sediments and Contaminated Soils – Preparation of Leachates, Bottle Leaching Procedure
AS 4482.1	Means the Australian Standard AS Guide to the Sampling and Investigation of Potentially Contaminated Soil – Non-volatile and semi-volatile compounds
AS 4482.2	Means the Australian Standard AS Guide to the sampling and investigation of potentially contaminated soil – Volatile substances
AS/NZS 5667.1	Means the Australian Standard AS/NZS 5667.1 <i>Water Quality – Sampling – Guidance of the Design of sampling programs, sampling techniques and the preservation and handling of samples</i>
AS/NZS 5667.4	Means the Australian Standard AS/NZS 5667.4 <i>Water Quality – Sampling – Guidance on sampling from lakes, natural and man-made</i>

Term	Definition
AS/NZS 5667.6	Means the Australian Standard AS/NZS 5667.6 <i>Water Quality – Sampling – Guidance on sampling of rivers and streams</i>
AS/NZS 5667.9	Means the Australian Standard AS/NZS 5667.9 <i>Water Quality – Sampling – Guidance on sampling from marine waters</i>
AS/NZS 5667.10	Means the Australian Standard AS/NZS 5667.10 <i>Water Quality – Sampling – Guidance on sampling of waste waters</i>
AS/NZS 5667.11	Means the Australian Standard AS/NZS 5667.11 <i>Water Quality – Sampling – Guidance on sampling of groundwaters</i>
BGL	Means below ground level
Books	Has the same meaning given to that term under the EP Act.
CEO	Means Chief Executive Officer of the Department. “submit to / notify the CEO” (or similar), means either: Director General Department administering the <i>Environmental Protection Act 1986</i> Locked Bag 10 Joondalup DC WA 6919 or: info@dwer.wa.gov.au
Clean Fill	Has the same meaning given to that term in the Landfill Waste Classification and Waste Definitions 1996 (as amended)
Commingled Recycling	Recyclable materials such as paper, cardboard, metal, glass and plastics which have been mixed in a single bin or a collection truck.
Contaminated Solid Waste	Has the same meaning given to that term in the Landfill Waste Classification and Waste Definitions 1996 (as amended)
Controlled Waste Regulations	The <i>Environmental Protection (Controlled Waste) Regulations 2004</i>
Department	Means the department established under section 35 of the <i>Public Sector Management Act 1994</i> (WA) and designated as responsible for the administration of the EP Act, which includes Part V Division 3.
Discharge	Has the same meaning given to that term under the EP Act
DrumMUSTER container	Means a container meeting the requirements of Schedule 5.
Emission	Has the same meaning given to that term under the EP Act
EP Act	<i>Environmental Protection Act 1986</i> (WA)
EP Regulations	<i>Environmental Protection Regulations 1987</i> (WA)

Term	Definition
E-waste	means electronic, electrical and battery-powered items that have been discarded or no longer in working order. Covers a range of items used in commercial, industrial and residential premises and includes, but is not limited to, televisions, computers, mobile phones, kitchen appliances and white goods.
Freeboard	means the distance between the maximum water surface elevations and the top of retaining banks or structures at their lowest point
Hardstand	Means a surface with a permeability of 10-9 metres/second or less
Hazardous Waste	Has the same meaning given to that term in the Landfill Waste Classification and Waste Definitions 1996 (as amended) “other hazardous waste” refers to wastes meeting the definition in the Landfill Waste Classification and Waste Definitions 1996 (as amended) other than those that have been specifically named in this licence.
Household Hazardous Waste (HHW)	Products used in and around the home that are flammable, toxic, explosive or corrosive, and are listed as wastes in Schedule 4 of this licence.
HDPE	Means high density polyethylene being the liner used for the bioremediation windrows and meeting the specifications defined in the letter ‘ <i>Works approval for bioremediation facility: Lot 1125 Maxwell Street Albany</i> ’ dated 8 January 2015;
Inert Waste Type 1	Has the same meaning given to that term in the Landfill Waste Classification and Waste Definitions 1996 (as amended)
Inert Waste Type 2	Has the same meaning given to that term in the Landfill Waste Classification and Waste Definitions 1996 (as amended)
Landfill Definitions	Means the document titled “Landfill Waste Classification and Waste Definitions 1996” published by the Chief Executive Officer of the Department of Environment as amended from time to time
Leachate	Means a liquid containing contaminants leached from the waste mass produced as water percolates through a landfill
Leachate pond	Means the pond on the premises dedicated to hold leachate as defined and labelled “Leachate Pond (LP2)” on the Map of monitoring locations in Schedule 1
Licence	Refers to this document, which evidences the grant of a Licence by the CEO under section 57 of the EP Act, subject to the specified conditions contained within.
Licence Holder	Refers to the occupier of the premises, being the person specified on the front of the Licence as the person to whom this Licence has been granted.
Lined	Means a liner that meets the guidelines set out in at least one of the following documents published by the Department of Water: <i>Liners for</i>

Term	Definition
	<i>containing pollutants using engineered soils (February 2006) WQPN 27 and Liners for containing pollutants using synthetic membranes (February 2009) WQPN 26</i>
Monthly period	means a one-month period commencing from the seventh day of a month until sixth day of the immediately following month
NATA	means the National Association of Testing Authorities, Australia
NATA Accredited	means in relation to the analysis of a sample that the laboratory is NATA accredited for the specified analysis at the time of the analysis
Practicable	Is as defined in the Environmental Protection Act 1986
Premises	Refers to the premises to which this Licence applies, as specified at the front of this licence and as shown on the premises maps (Figure's 1, 2 and 3) in Schedule 1 to this licence.
Prescribed premises	Has the same meaning given to that term under the EP Act.
Putrescible Waste	Has the same meaning given to that term in the Landfill Waste Classification and Waste Definitions 1996 (as amended)
Quarantine Waste	Means material from a foreign region or country that is capable of being host to insects, helminths or other parasites, disease, weeds or any other organisms that are not existent or prevalent in that country and pose a potential threat to local ecosystems, people or local plant or animal industries;
Quarantined storage area or container	means a designated storage area or container that is: <ul style="list-style-type: none"> clearly labelled; separated and isolated from other waste storage and processing areas; and designed to contain all non-conforming waste and prevent and mitigate the release to the environment of emissions that may arise from the waste.
Quarterly	Means the 4 inclusive periods from 1 January to 31 March, 1 April to 30 June, 1 July to 30 September and 1 October to 31 December in the same year
Rehabilitation	means the completion of the engineering of a landfill cell and includes capping and final cover
Schedule 1	Means Schedule 1 of this Licence unless otherwise stated
Schedule 2	Means Schedule 2 of this Licence unless otherwise stated
Schedule 3	Means Schedule 3 of this Licence unless otherwise stated
Schedule 4	Means Schedule 4 of this Licence unless otherwise stated

Term	Definition
Schedule 5	Means Schedule 5 of this Licence unless otherwise stated
Sedimentation basin/s	Means either of the basins on the premises which are dedicated to store uncontaminated stormwater and settle out any solids prior to off-site discharge, as defined and labelled "Sedimentation Basin (SB2)" on the Map of monitoring locations in Schedule 1
Shut down	Means the period when plant or equipment is brought from normal operating conditions to inactivity
Six monthly	Means the 2 inclusive periods from 1 April to 30 September and 1 October to 31 March in the following year
Solid waste	Has the same meaning given to that term in the Landfill Waste Classification and Waste Definitions 1996 (as amended)
Special Waste Type 1	Has the same meaning given to that term in the Landfill Waste Classification and Waste Definitions 1996 (as amended)
Special Waste Type 2	Has the same meaning given to that term in the Landfill Waste Classification and Waste Definitions 1996 (as amended)
Spot sample	Means a discrete sample representative at the time and place at which the sample is taken
Start-up	Means the period when plant or equipment is brought from inactivity to normal operating conditions
Stormwater drains	Means the drains on the premises which are dedicated to divert uncontaminated stormwater around and away from the active landfill area and to a sedimentation basin, including (but not limited to) the "Northern Stormwater Drain", "Top Drain (Bund)" and "Toe Drain" as defined and labelled in the Map of monitoring locations in Schedule 1
Tipping Area	Means the area of the premises where waste is currently brought for burial
Usual working day	Means 0800 – 1700 hours, Monday to Friday excluding public holidays in Western Australia
µS/cm	Means micro siemens per centimetre
W5797/2015/1	Means the Works Approval numbered W5797/2015/1 and issued under the Act
Waste	Has the same meaning given to that term under the EP Act.
Weir	As shown on the map in Schedule 1 of this Licence.
Weekly period	Means a seven-day periods commencing from the Tuesday of once week until the Monday of the immediately following week.

END OF CONDITIONS

L6925/1997/8 (27/03/2023)

Schedule 1: Maps

Premises map

The boundary of the prescribed premises is shown in the map below (Figure 1).

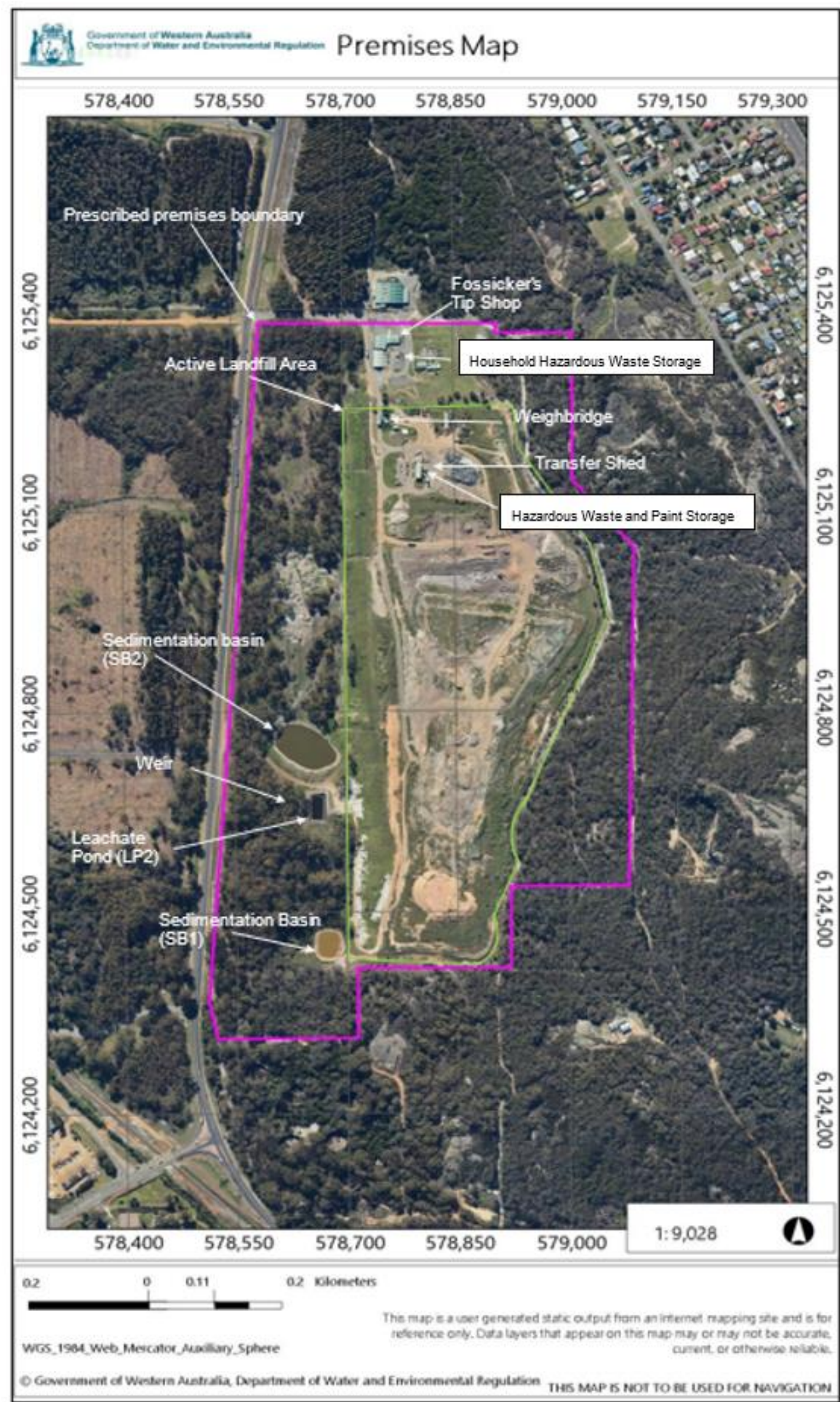


Figure 1: Map of the boundary of the premises boundary, infrastructure, stormwater and leachate collection ponds.

Premises Infrastructure Maps

The locations of infrastructure shown in the maps below (Figure 2 and Figure 3).

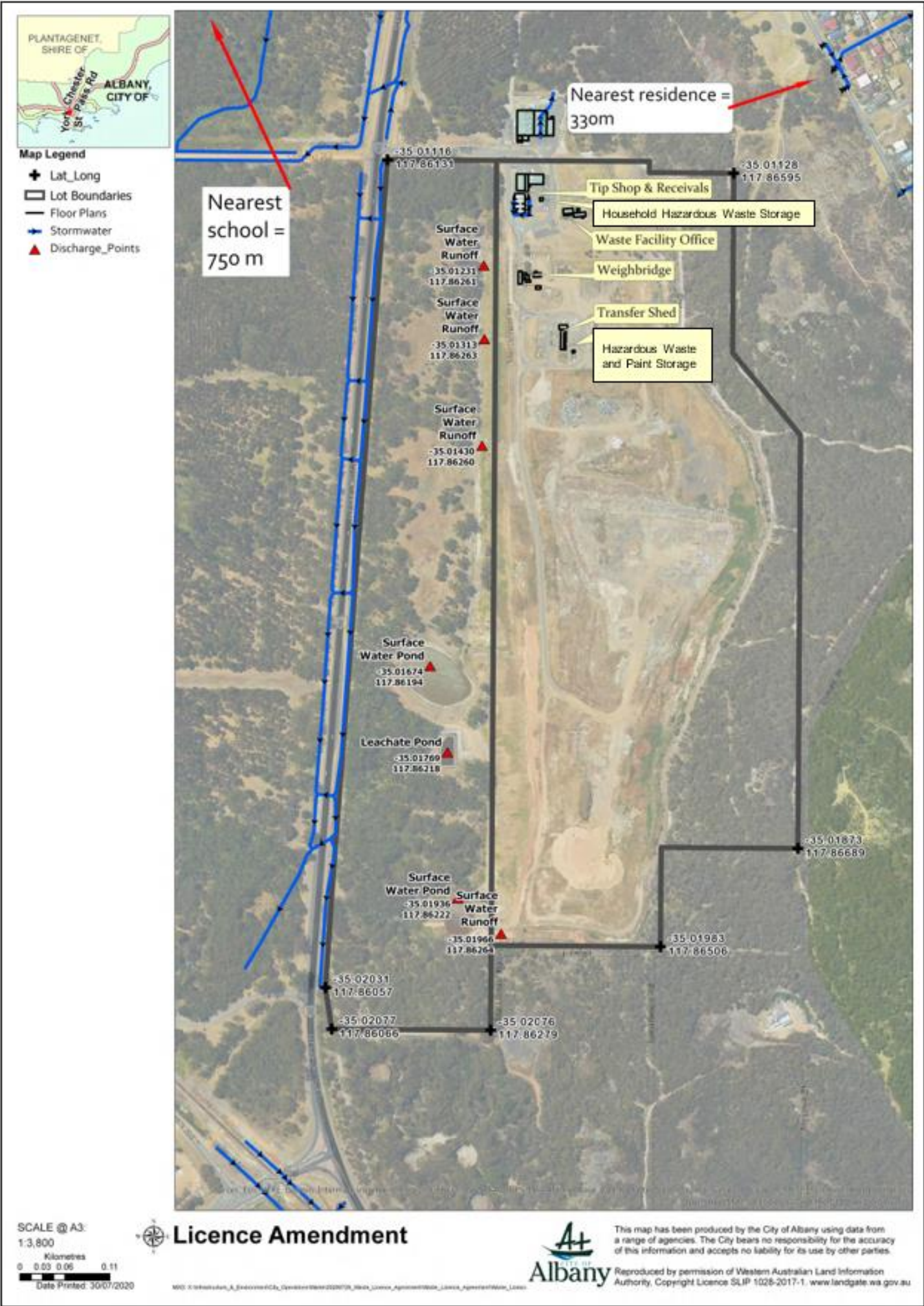


Figure 2: Map depicting the Premises Infrastructure locations.

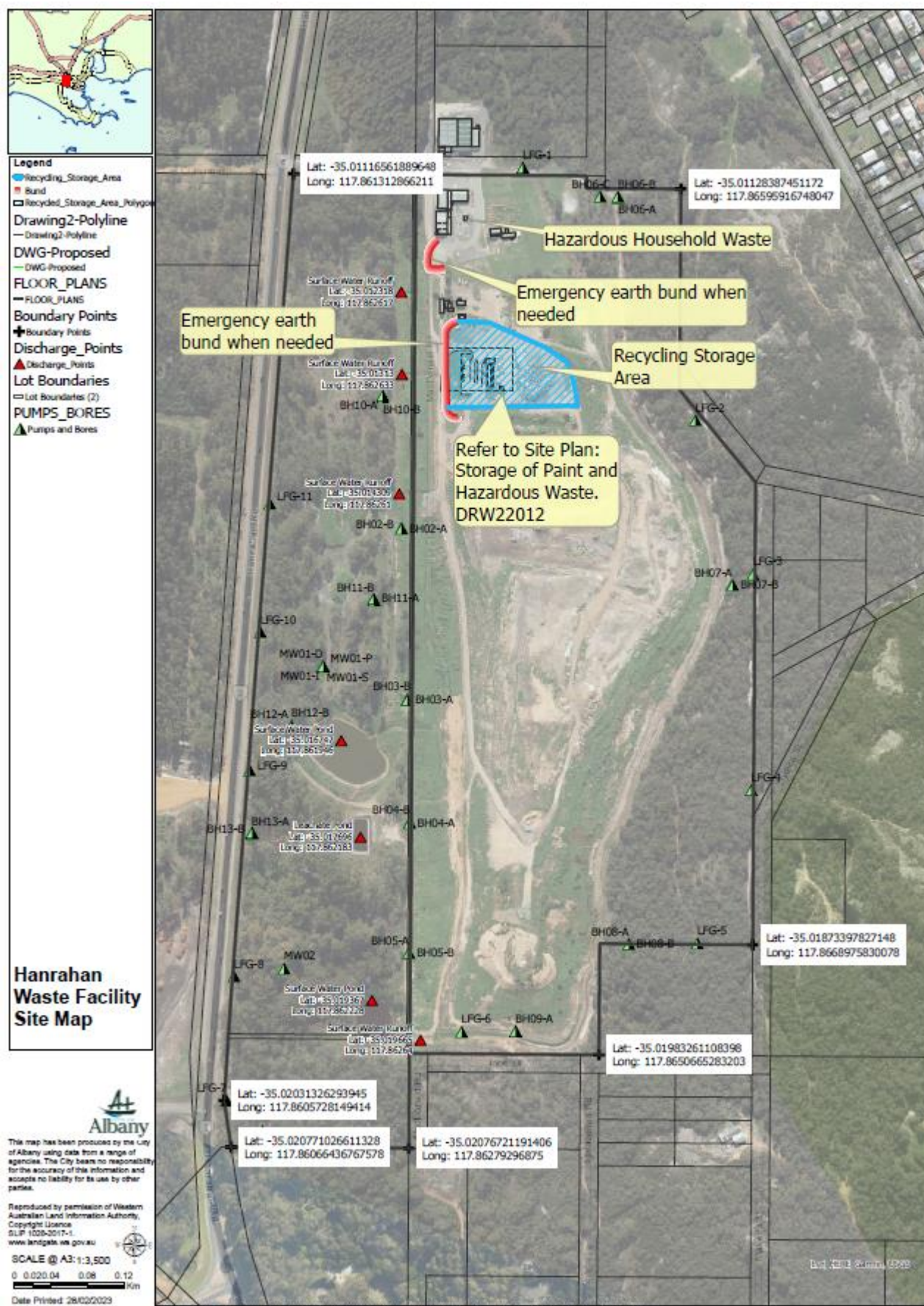


Figure 3: Map depicting location of emergency earthen bunds and Recycling Storage Area

Map of monitoring locations

The locations of the monitoring points defined in Tables 6, 9 and 10 are shown below (Figure 4).

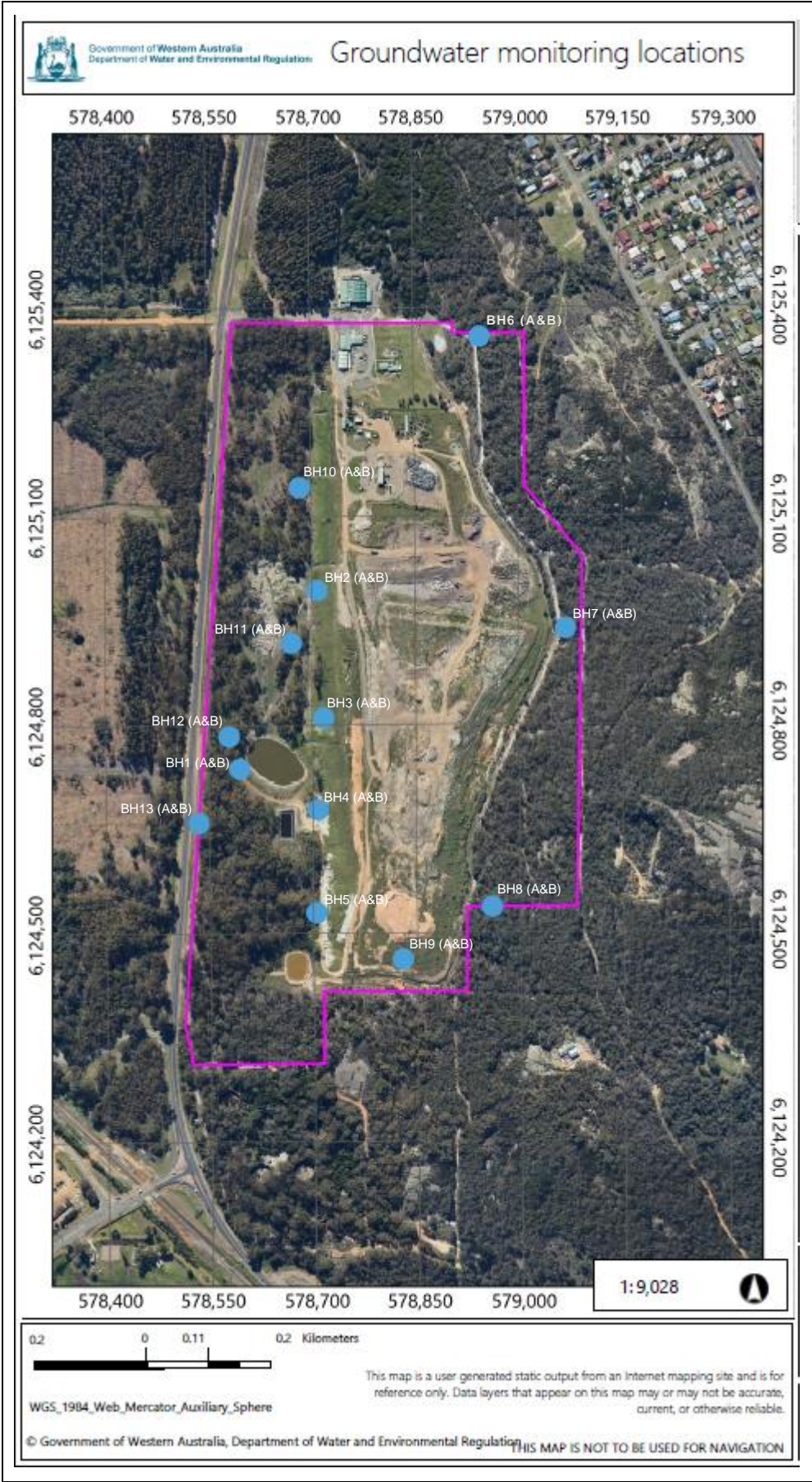


Figure 4: Groundwater monitoring locations on the Premises.

Schedule 2: Premises boundary

The premises boundary is defined by the coordinates in Table14.

Table 14: Premises boundary coordinates (GDA94)

Easting	Northing	Zone
578580.50876	6125382.00869	50
579001.36398	6125368.62320	50
579088.14965	6124539.50063	50
578521.74263	6124316.39955	50

Schedule 3: Notification and Reporting

The N1 Notification Form is included below.

Licence: L6925/1997/8
Form: N1

Licence Holder: City of Albany
Date of breach:

Notification of detection of the breach of a limit.

These pages outline the information that the operator must provide.

Units of measurement used in information supplied under Part A and B requirements shall be appropriate to the circumstances of the emission. Where appropriate, a comparison should be made of actual emissions and authorised emission limits.

Part A

Licence number	L6925/1997/8
Name of operator	
Location of premises	
Time and date of the detection	

Notification requirements for the breach of a limit	
Emission point reference/source	
Parameter(s)	
Limit	
Measured value	
Date and time of monitoring	
Measures taken, or intended to be taken, to stop the emission	

Part B

Any more accurate information on the matters for notification under Part A.	
Measures taken, or intended to be taken, to prevent a recurrence of the incident.	
Measures taken, or intended to be taken, to rectify, limit or prevent any pollution of the environment which has been or may be caused by the emission.	
The dates of any previous N1 notifications for the Premises in the preceding 24 months.	

Name	
Post	
Signature on behalf of Licence Holder	
Date	

Schedule 4: Household Hazardous Waste

The following HHW items can be accepted at the site:

- Acids
- Aerosols – CFC based
- Aerosols, flammable – paint and lacquers
- Aerosols, flammable - pesticide
- Alkali
- Arsenic based products
- Batteries - household, dry cell
- Cyanides
- Engine coolants and glycols
- Fire extinguishers – non-Halon
- Flammable liquids – hydrocarbons and fuels
- Flammable solids
- Flares
- Fluorescent tubes, CFL and light fittings
- Gas cylinders – other
- Gas cylinders – propane
- General household chemicals eg cleaners
- Heavy metal compounds
- Inorganic oxidising agents – eg pool chlorine
- Low level radioactive substances eg smoke detectors
- Mercury – elemental
- Organic peroxides
- Paint – metal based
- Paint – other, including isocyanates and amines
- Paint – recyclable
- Paint – solvent based, including resins and adhesives
- Paint – water based
- PCB materials
- Pesticides – non Schedule X
- Pesticides – Schedule X
- Solvents – halogenated
- Toxics
- Most HHW facilities will accept 'unknown chemicals' if they are in a secure, sealed, chemical-resistant container.

Ref: (Waste Authority, *Household Hazardous Waste*. Available at: [Household Hazardous Waste | Waste Authority WA](#) (Accessed: 3 March 2023))

Schedule 5: drumMUSTER container requirements

Eligible Containers

drumMUSTER is specially designed for the disposal of eligible, cleaned AgVet chemical containers.

drumMUSTER collects eligible non-returnable metal or plastic containers where the capacity of the container is at least 1L/Kg but not greater than 205L/Kg of declared content in the packaging of crop production and animal health products used for:

- agricultural and livestock production
- industrial and recreational pest and weed control
- forestry
- household pest control operations
- similar activities conducted by government authorities.

Participating manufacturers are identified by the inclusion of the eligible **drumMUSTER** container logo on their eligible containers. The logo can be displayed on the chemical label, embossed into the container wall or applied as a sticker to the container. Containers not displaying this logo may be from non-participating manufacturers and will not be accepted into the program.



Ref: Agsafe, drumMUSTER *Eligible Containers*. Available at: [Eligible Containers - Drummuster](#) (Accessed 9 March 2023)

L6925/1997/8 (27/03/2023)

IR-T06 Licence template (v6.0) (February 2020)